



INTERNATIONAL TELECOMMUNICATION UNION

**TELECOMMUNICATION  
STANDARDIZATION SECTOR**

STUDY PERIOD 2017-2020

**FG-AI4H-F-105**

**ITU-T Focus Group on AI for Health**

**Original: English**

---

**WG(s):** Plenary Zanzibar, 3-5 September 2019

**DOCUMENT**

**Source:** FG-AI4H

**Title:** Working Group on Experts; Terms of Reference

**Purpose:** Discussion

---

**Contact:** Thomas Wiegand Email: [thomas.wiegand@hhi.fraunhofer.de](mailto:thomas.wiegand@hhi.fraunhofer.de)  
Fraunhofer HHI, Germany

---

**Contact:** Monique Kuglitsch Email: [monique.kuglitsch@hhi.fraunhofer.de](mailto:monique.kuglitsch@hhi.fraunhofer.de)  
Fraunhofer HHI, Germany

---

**Contact:** Per Hasvold Email: [hasvoldp@who.int](mailto:hasvoldp@who.int)  
WHO, Switzerland

---

**Abstract:** This document contains the Terms of Reference for the FG-AI4H Working Group on Experts (WG – Experts). Two documents are attached to the ToR: an application form and a declaration of conflict of interests for experts. This document was approved after discussions at FG-AI4H meeting in Zanzibar and a 2-week consultation via the general FG-AI4H e-mail reflector.

## 1 Motivation

The Focus Group on “Artificial Intelligence for Health” (FG-AI4H), a collaboration between the World Health Organization and International Telecommunication Union, is developing a framework for the standardized benchmarking of AI technology for health. FG-AI4H operates at the interface of multiple fields including: machine learning/AI, medicine, public health, regulation, statistics, and ethics. FG-AI4H activities are partitioned into topic groups (TG; i.e., groups dedicated to specific health topics that could benefit from AI; e.g., dermatology) and working groups (WG; i.e., groups dedicated to overarching themes; e.g., regulatory considerations). To support FG-AI4H leadership, a roster of external experts is sought. These experts will provide FG-AI4H leadership with an independent overview of activities in the various TGs and WGs. In addition, these experts will offer guidance and support to the TGs and WGs. The roster of external experts is referred to as the Working Group on Experts (WG – Experts).

## 2 Scope

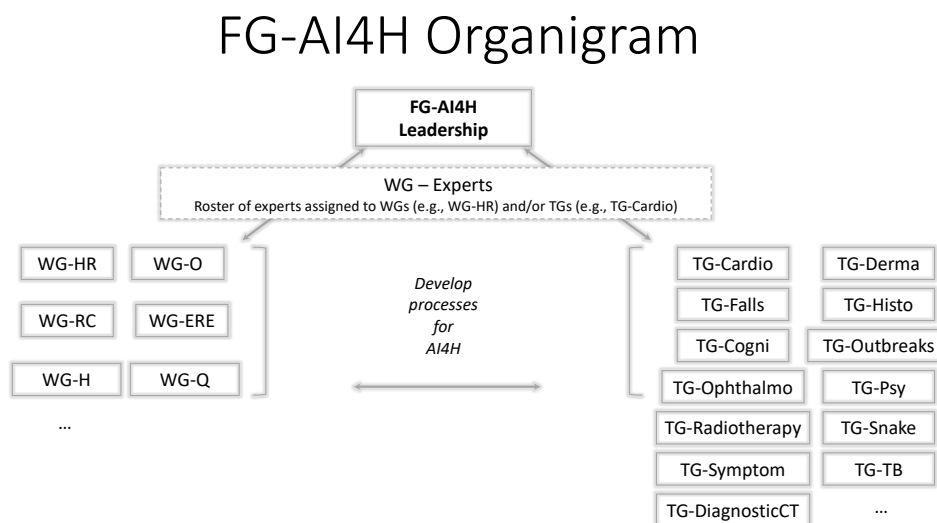
The main objective of WG – Experts is to provide an independent overview of activities in the various TGs and WGs for FG-AI4H leadership. In addition, these experts will provide various forms of support to the TGs and WGs.

According to the background of a given expert, he/she will be assigned to one (or multiple) TG(s) and/or WG(s) by FG-AI4H leadership. To stay engaged in the TG(s) and/or WG(s), the experts will participate in regular teleconferences. In addition, the experts will have regular contact (either via email or teleconference) with FG-AI4H leadership. Finally, it is expected that the experts will attend a minimum of three FG-AI4H workshops/meetings per year.

Because new WGs and TGs are regularly added to the focus group, identification and evaluation of experts will be a continuous process. Once nominated, experts will serve 2-year terms (with the possibility for 2-year extensions). Experts are volunteers; there will be no financial compensation.

Please note that is expected that experts will have no conflicts of interest and will consistently demonstrate professionalism.

The position of WG – Experts within the FG-AI4H organizational structure is shown in Figure 1.



**Figure 1 – Position of WG-Experts within the FG-AI4H organizational structure**

### **3 Specific issues to be addressed**

Experts will provide FG-AI4H leadership with an objective and independent review of activities in the TG(s) and/or WG(s). For the TG and/or WG drivers, experts will provide constructive criticism, advice, moderation, and/or other forms of support (as needed).

### **4 Deliverables**

- Providing replies or feedback to any issues raised by FG-AI4H leadership and the TG and/or WG drivers (as needed).
- Providing regular status reports to the FG-AI4H leadership and the TG and/or WG drivers (as needed).

### **5 Relationships**

- FG-AI4H leadership
- TG and WG drivers (as relevant)
- ITU secretariat
- WHO representatives
- Other experts in the relevant field
- Workshop hosts (as relevant)
- FG-AI4H partners (e.g., World Health Organization, International Telecommunication Union, International Association of National Public Health Institutes, InterAcademy Partnership, and International Hospital Federation) (as relevant)

### **Attachments:**

1. [FGAI4H-F-105-A01](#) – Draft application form for AI4H experts
  2. [FGAI4H-F-105-A02](#) – Draft declaration of interest form for AI4H experts
-