

ITU Kaleidoscope 2020 special panel
THE ROLE OF ICT FOR FUTURE PANDEMICS
December 9th 2020

*Interoperability between
European digital contact tracing
applications*

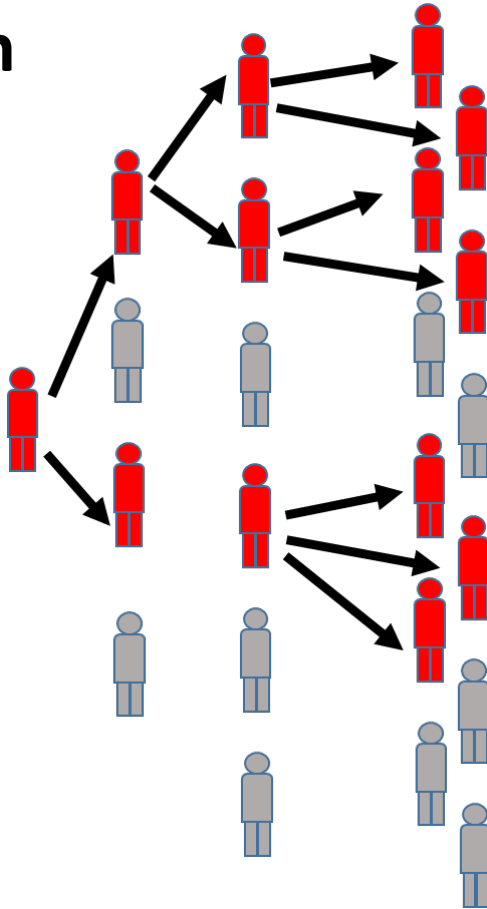
Prof. Jorge García Vidal

Universitat Politècnica de Catalunya (UPC)

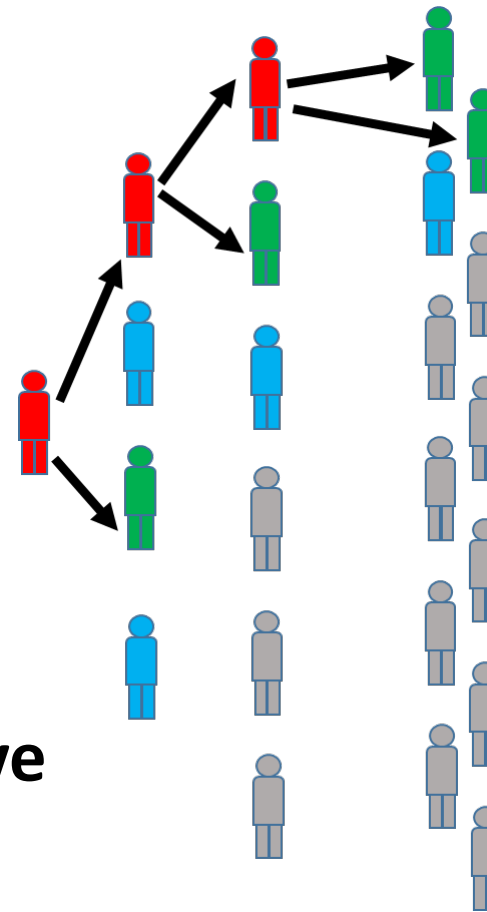
<https://personals.ac.upc.edu/jorge/>, jorge@ac.upc.edu

The promise of digital contact tracing

Exponential growth



Cut transmission chains

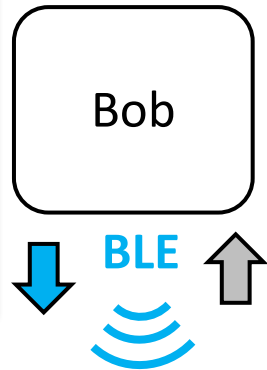


Risk exposure notification
(e.g. self quarantine, isolate, test, etc)

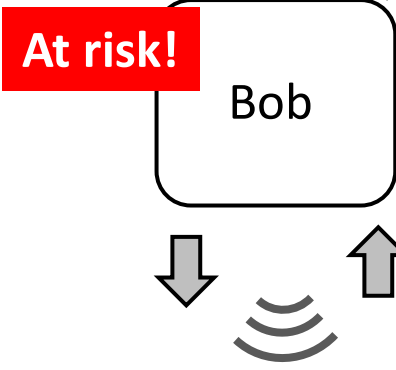
False positive

App operation

- (1) Detect user in proximity
- (2) Exchange info through Bluetooth Low Energy (BLE).
- (3) Estimate distance (RSSI)



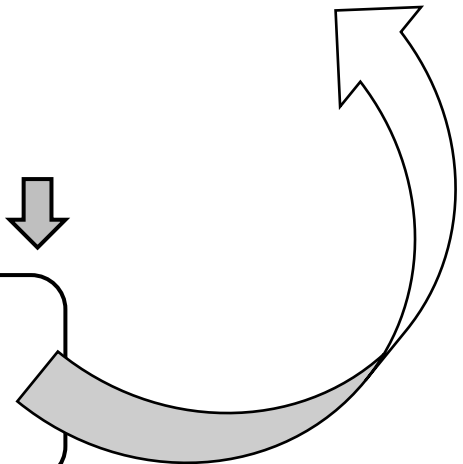
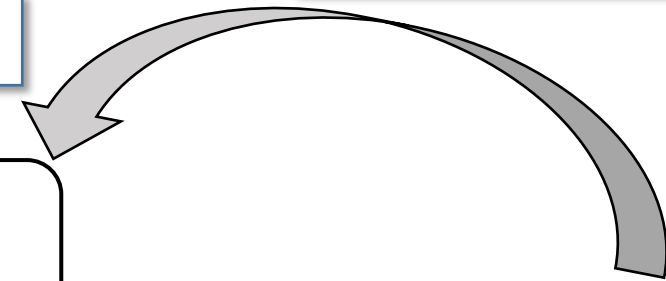
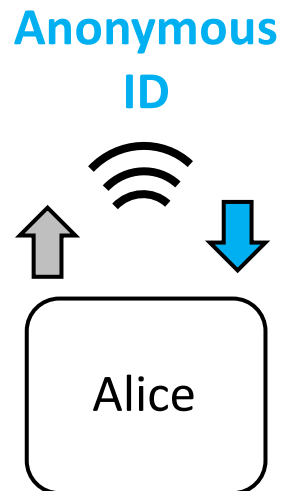
(6) User is notified



(5) Exposure notification



(4) Report of of COVID+ test



BLE operation

Payload of beacons for ROBERT

ECC	EBID	Time	MAC
8 b	64 b	16 b	40 b

Payload of beacons for DP3T/GAEN

EphID
128 b

Broadcast model

- Use advertising mechanism of BLE
- Devices broadcast advertising packets
- Devices collect advertising packets, parses & stores the exchanged data
- Only 20 Bytes may be used for data

Connected mode

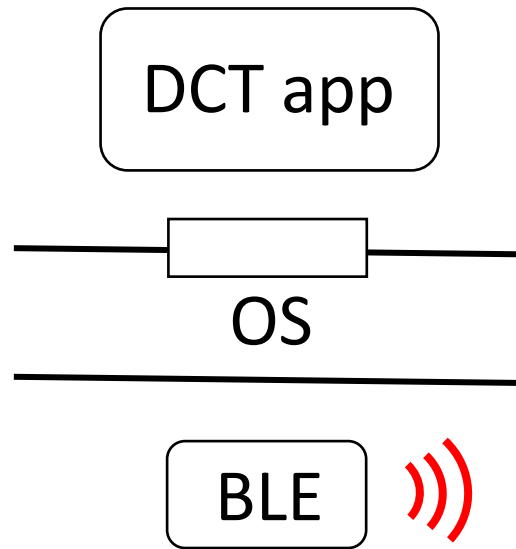
- Devices advertises support to DCT
- Establish a connection & exchange data

Hybrid mode

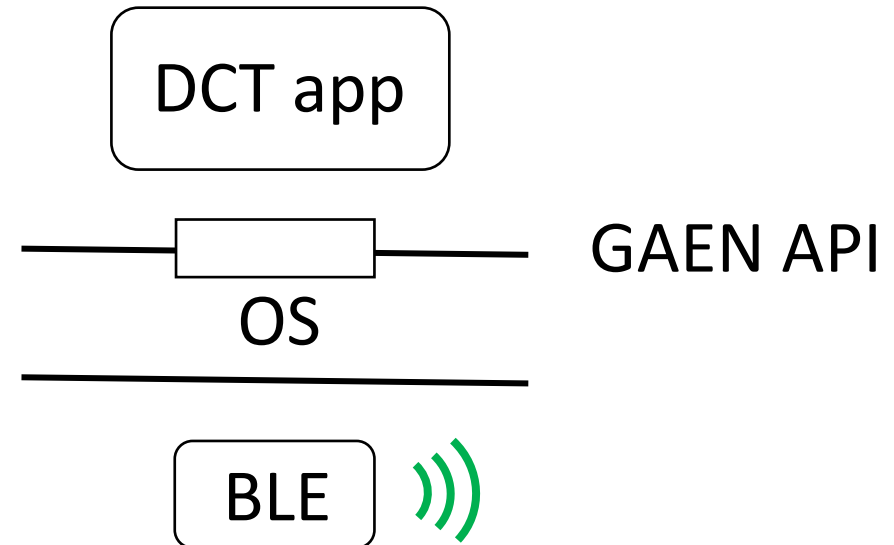
- Overcome limitations imposed by iOS

BLE operation & API

Anonymous IDs
processed by app

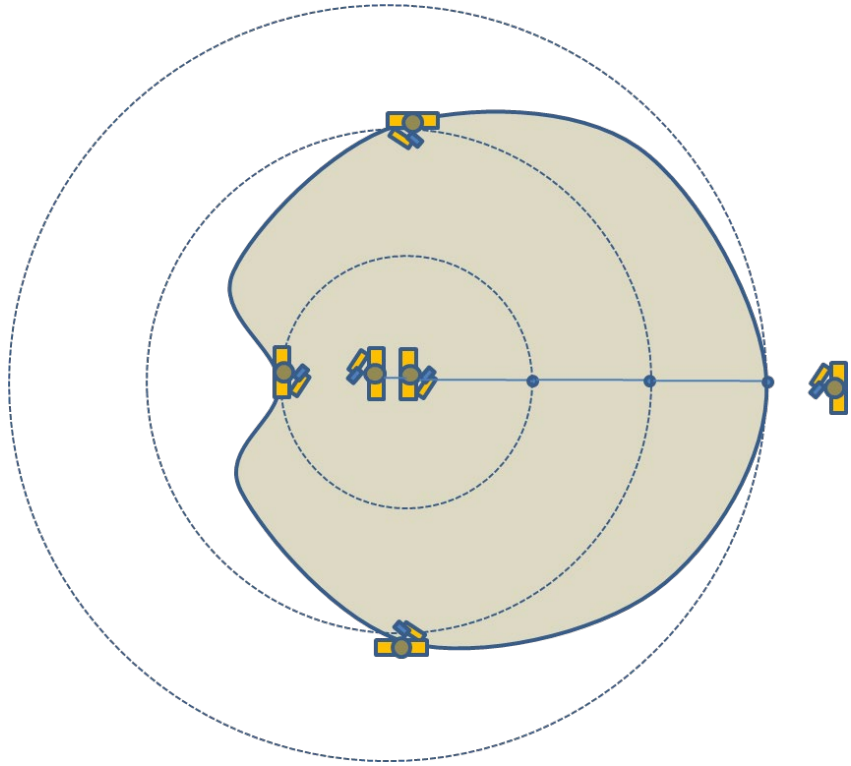


Anonymous IDs
processed by OS



*Protocol imposed by the API (DP3T/GAEN)
Compatibility at BLE layer, Android/iOS*

Using RSSI to estimate distance



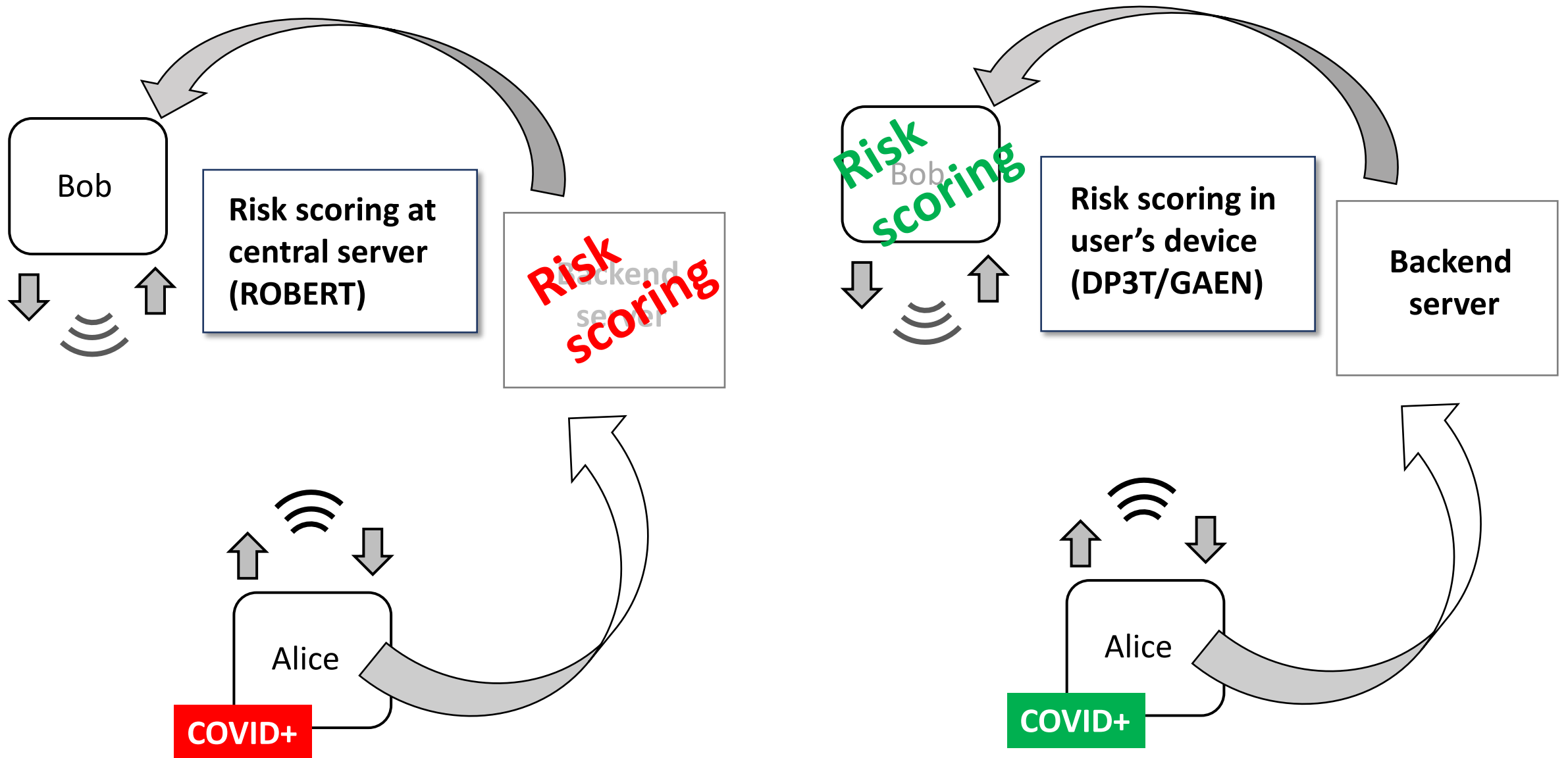
BLE RSSI varies substantially depending on:

- the relative orientation of handsets,
- on absorption by the human body,
- reflection/absorption of radio signals in buildings and trains.

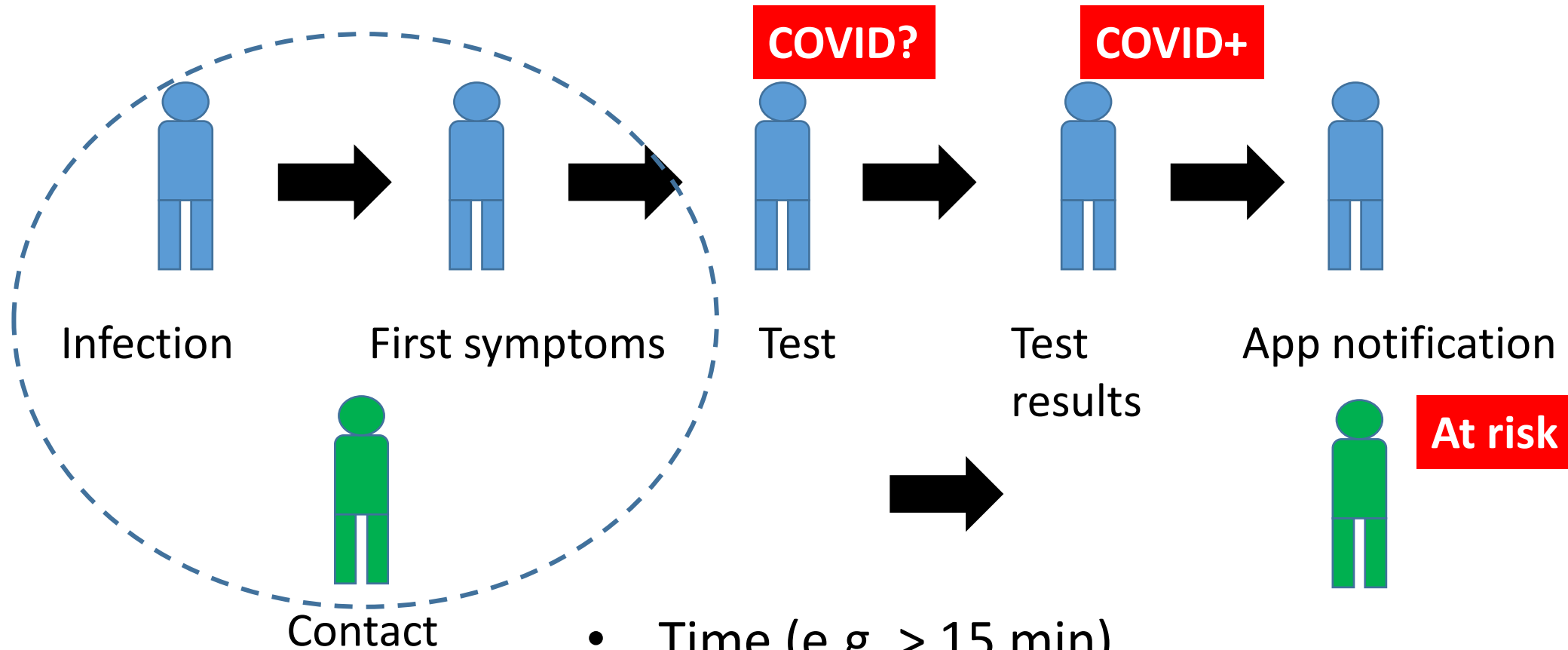
Alternatives? :

- UWB, based on time of flight

Centralized vs decentralized



Integration with Health system & risk scoring



- Time (e.g. > 15 min)
- Distance (e.g. < 2 m)
- Other factors?: indoor/outdoor, mandatory mask, ventilation, etc

Interoperability

Upload all received diagnostic keys

European
Federated
Gateway
Service

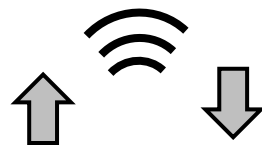


Backend server
Country B



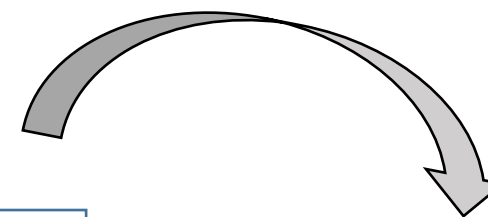
Backend server
Country A

Downloads all diagnostic keys
from all other countries.



Alice

COVID+



Risk
scoring
Bob



Exposed keys &
countries of
interest
(GAEN format)

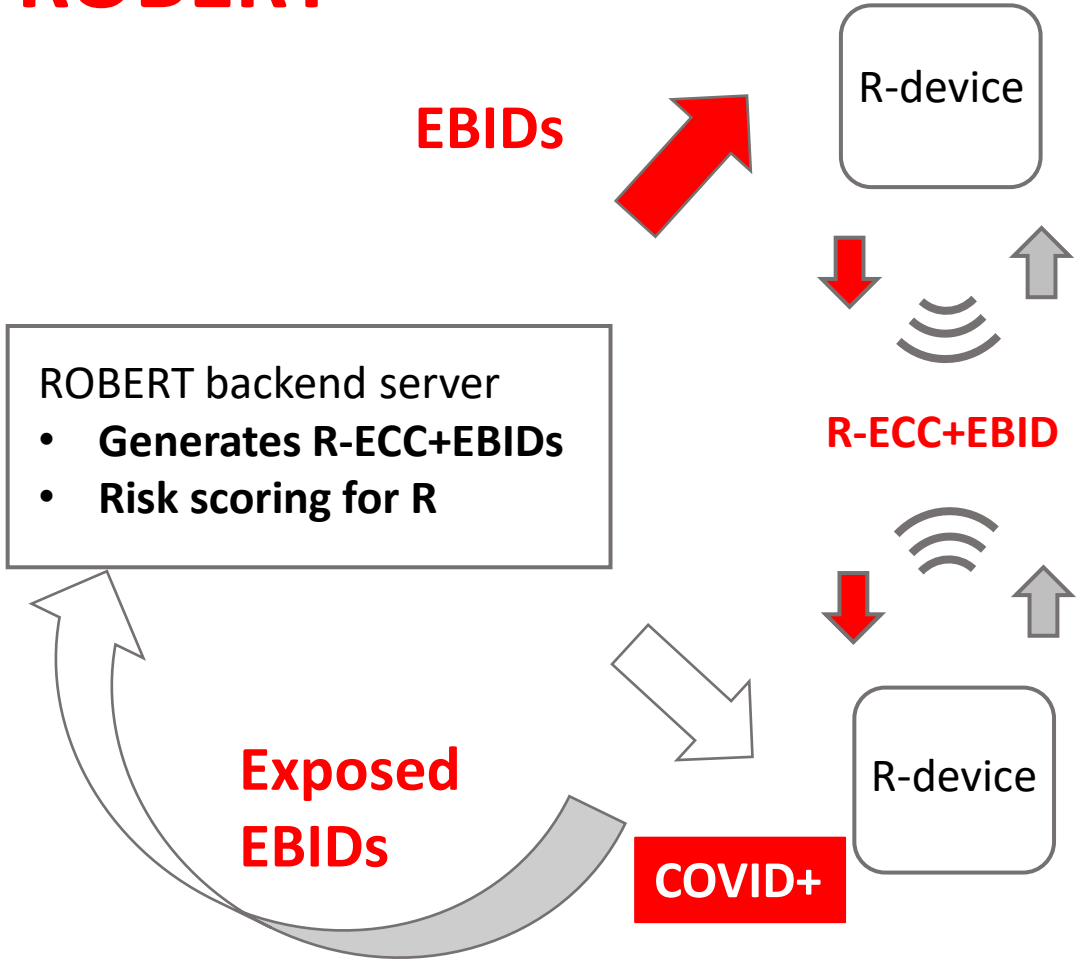
Many complex issues ..

- Politically loaded issue, communication campaign
- Legal/Ethical issues (voluntary app)
- Integration with (public) health system (what should a user do when receives a “Risk exposure” notification?)
- Risk scoring (not well understood yet)
- Using BLE for distance estimation
- Population with no smartphones
- The role of Google & Apple
- Interoperability

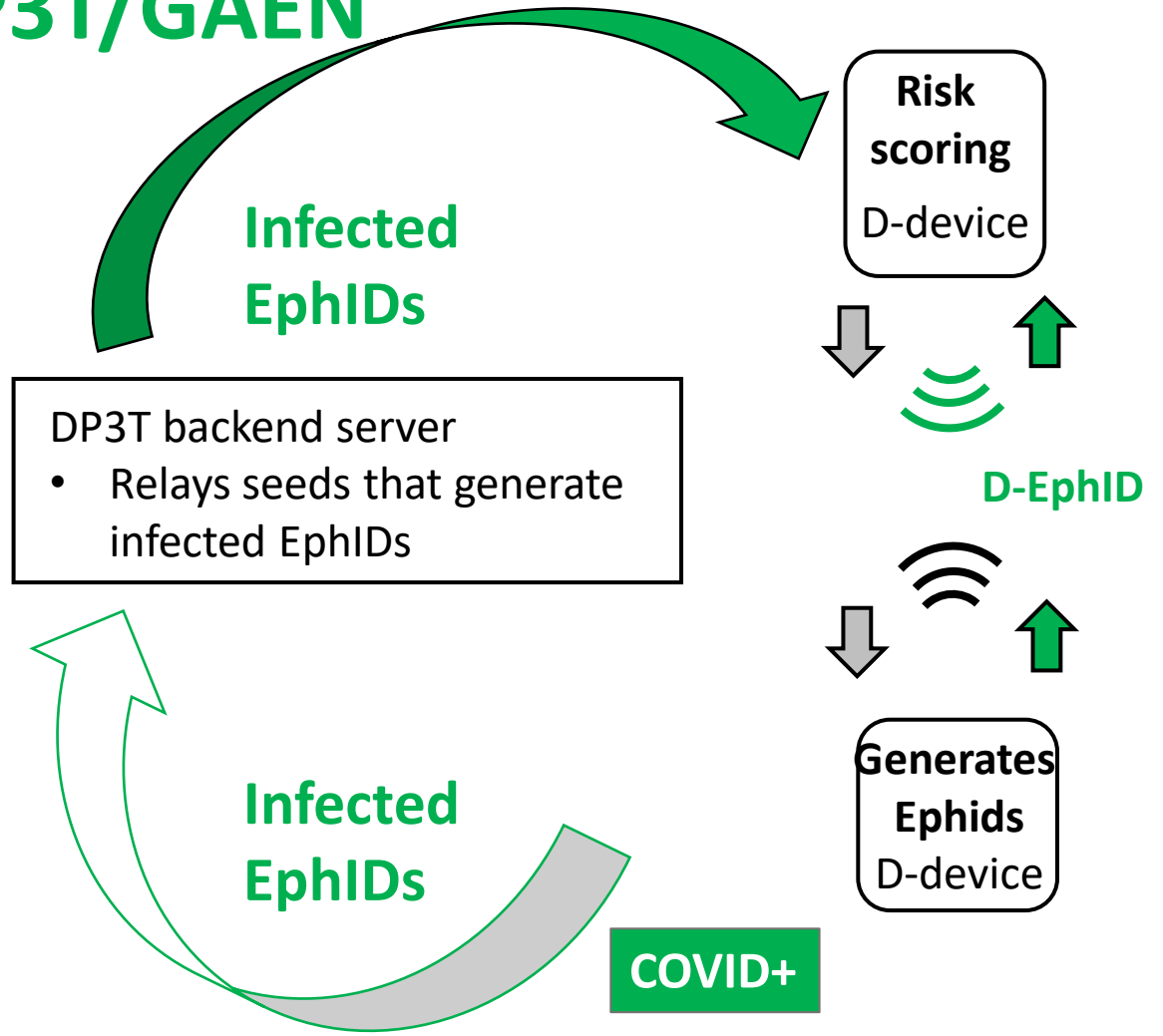
Thank you

DP3T/GAEN vs ROBERT

ROBERT

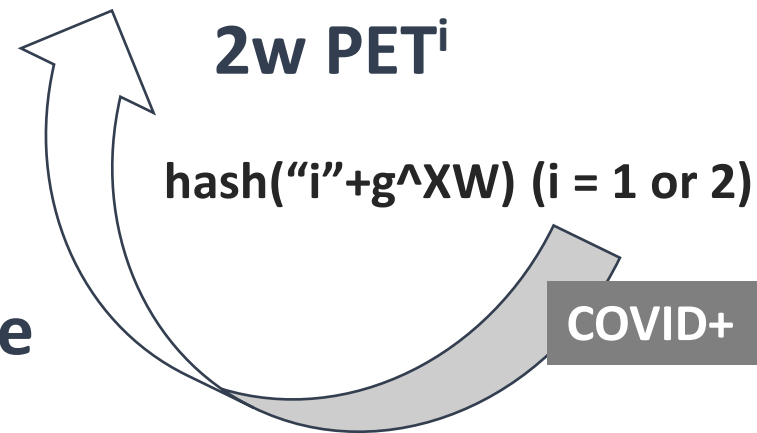
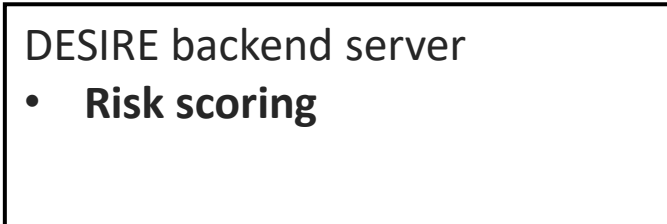
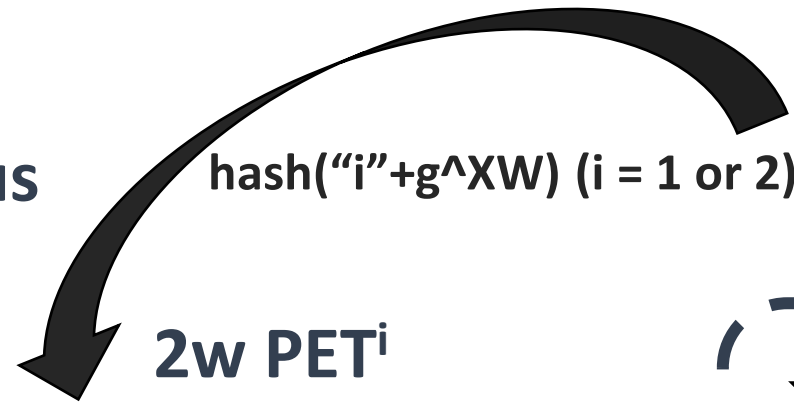


DP3T/GAEN



3rd way: DESIRE

Exposure Status Request



Infected Node Declaration

