



Smart Cities: Envisioning a Sustainable Future

Alessandro Cozzi
Huawei Italy, Enterprise BG Director
alessandro.cozzi@huawei.com



Huawei at a glance

Who is Huawei

- A leading **global** ICT solutions provider
- A **private** company established in 1987
- A **Fortune Global 500** company



Employees

- **150,000+** employees worldwide
- **70,000+** engaged in R&D



Market Progress

- \$39.5 B revenue in 2013
- \$ 5 B R&D investment in 2013
- Serving **1/3** of the world's population



Business Areas

- Carrier network
- Enterprise business
- Consumer devices



Challenges and drivers

Megatrends changing the world



Developed Countries' Labor Forces Substantially Age and Decline



Economic Power Shifts to Developing Nations

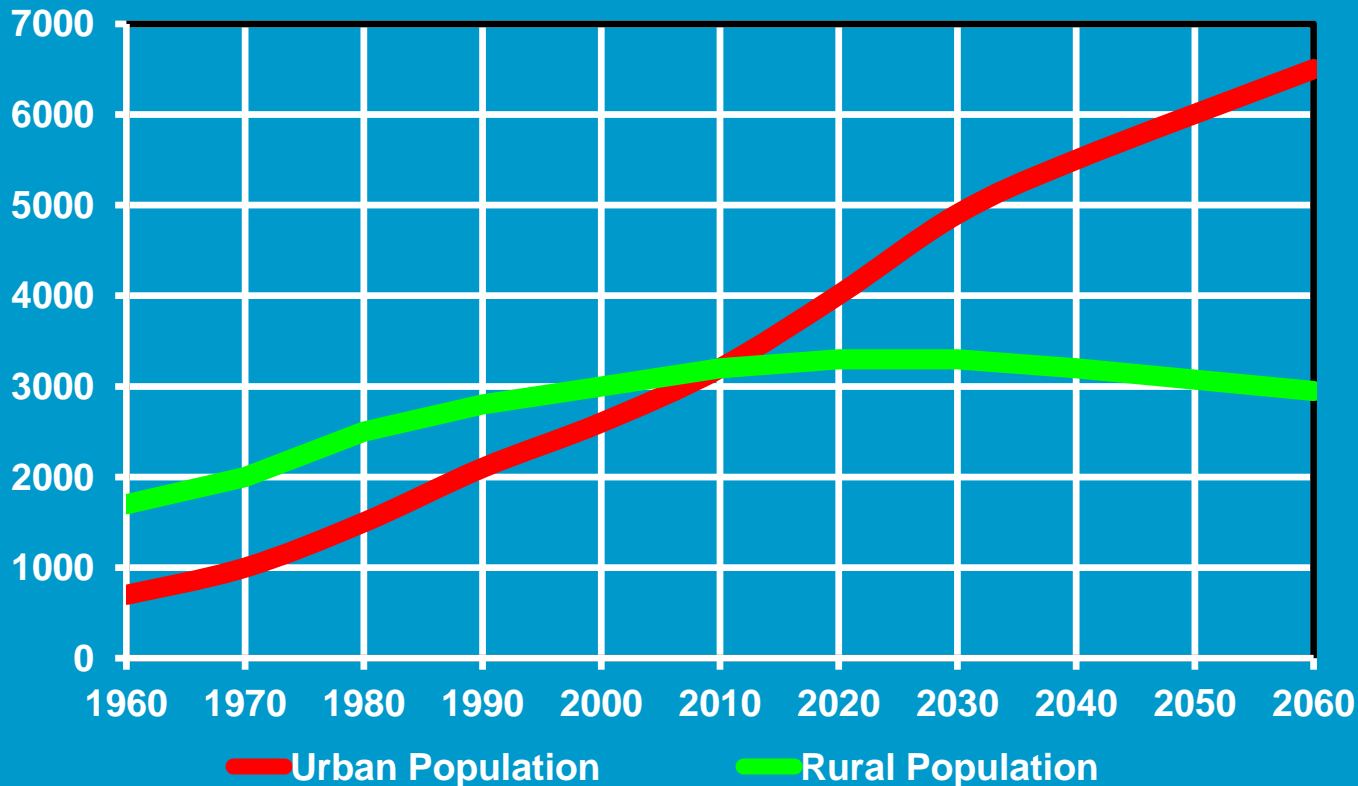


Population Growth Increasingly Concentrated in Emerging Countries



World's Population Becomes Urbanized

Urbanization trends





Since 2011 **Smartphones** sales have been exceeding PCs



1.2B people working out of office in 2013



35% Global enterprise users are Mobile Users



204M emails sent in last minute

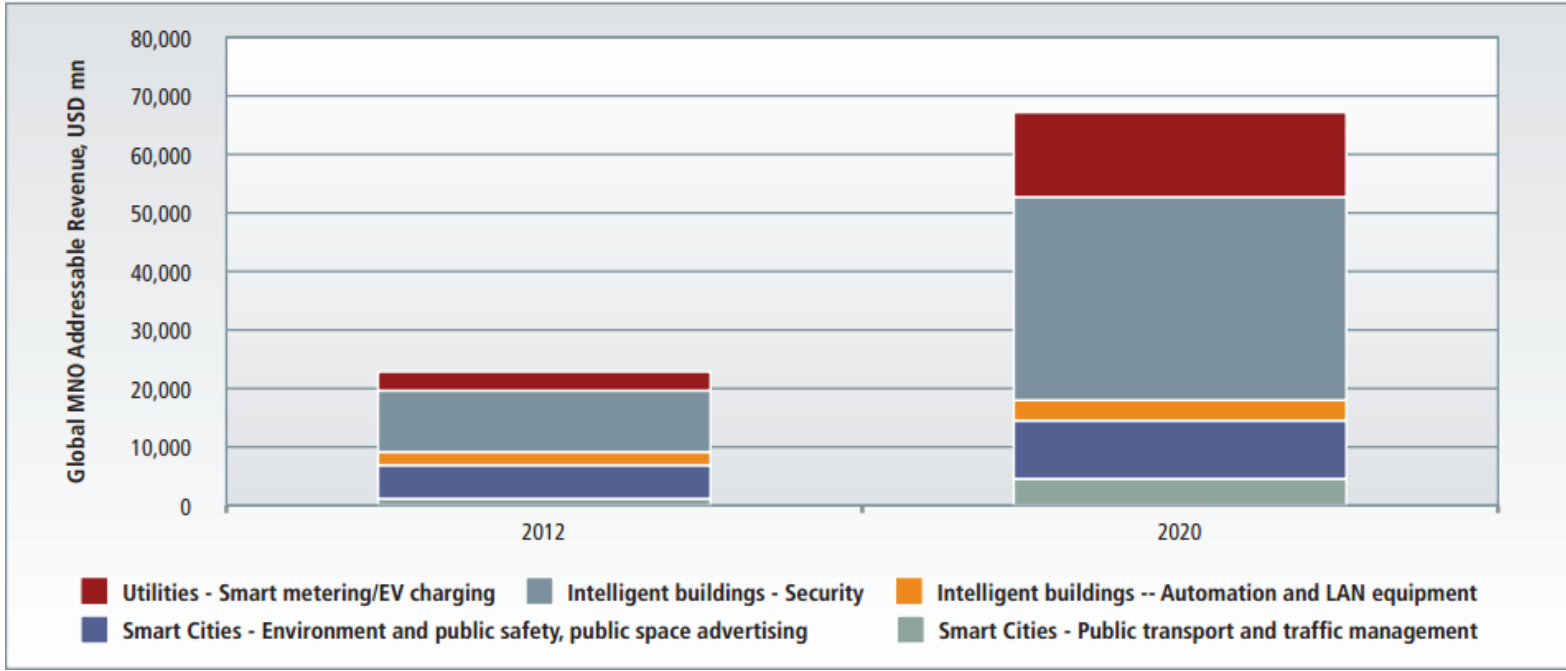


1.3M YouTube Views in last minute



Global Smart cities market

The global mobile addressable market in smart cities, transport, utilities and intelligent buildings will amount to **USD\$67.1bn in 2020**, up from USD\$22.8bn in 2012, according to Machina Research.



Source: Machina Research. January 2013

Challenges Facing Our Cities



Public
security



Traffic
congestion



Energy
shortages



Event
support

Smarter City



All in Control

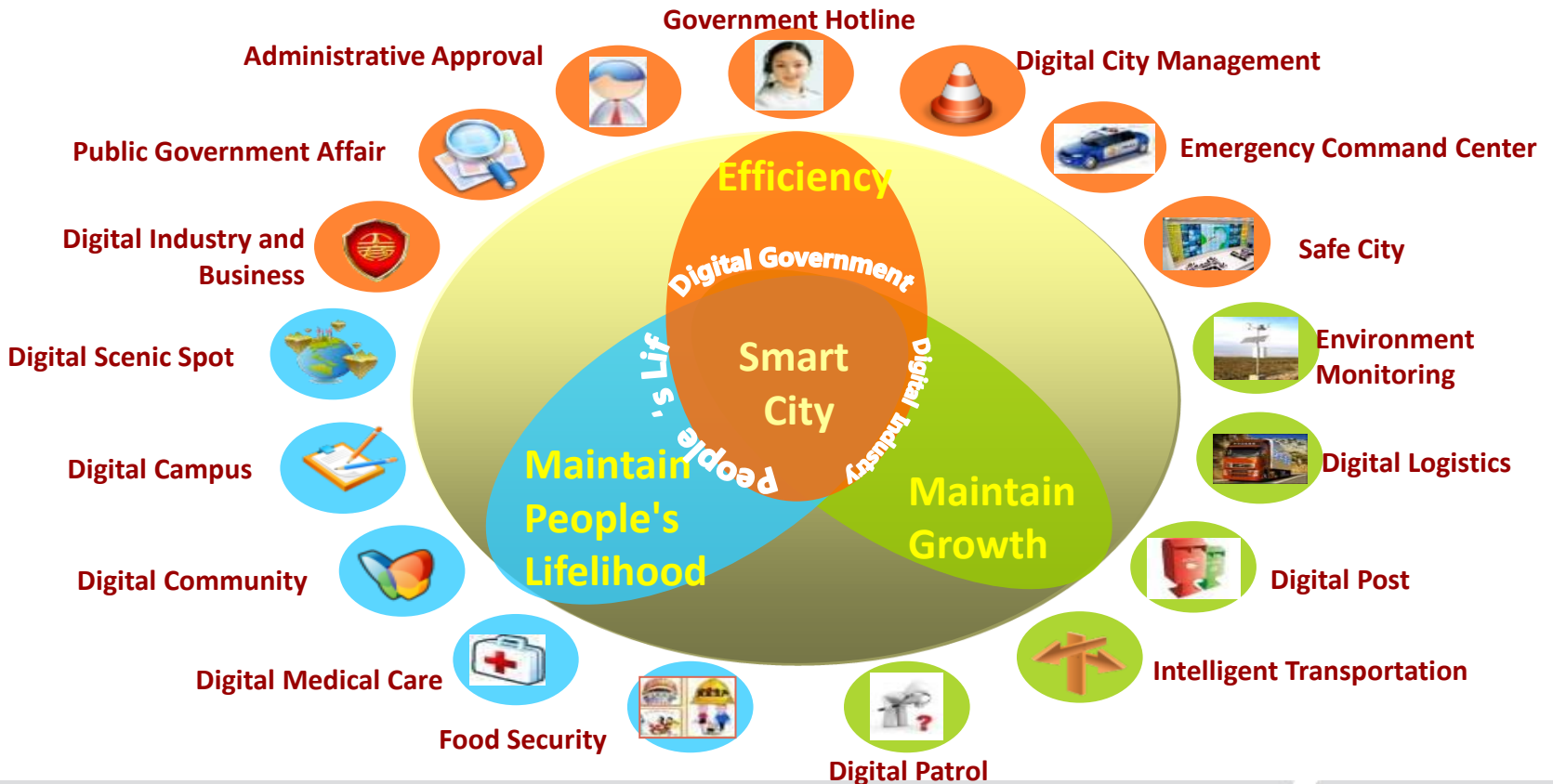


Visible Command

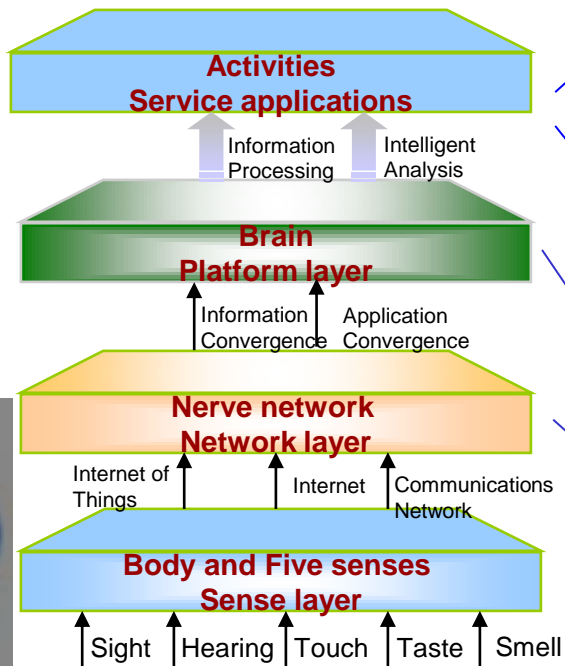
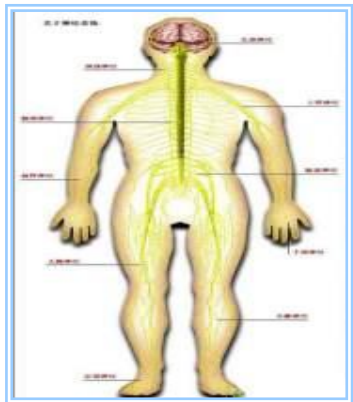


Mobile services

Panorama of Smart City- Full View



Creating a sensing system

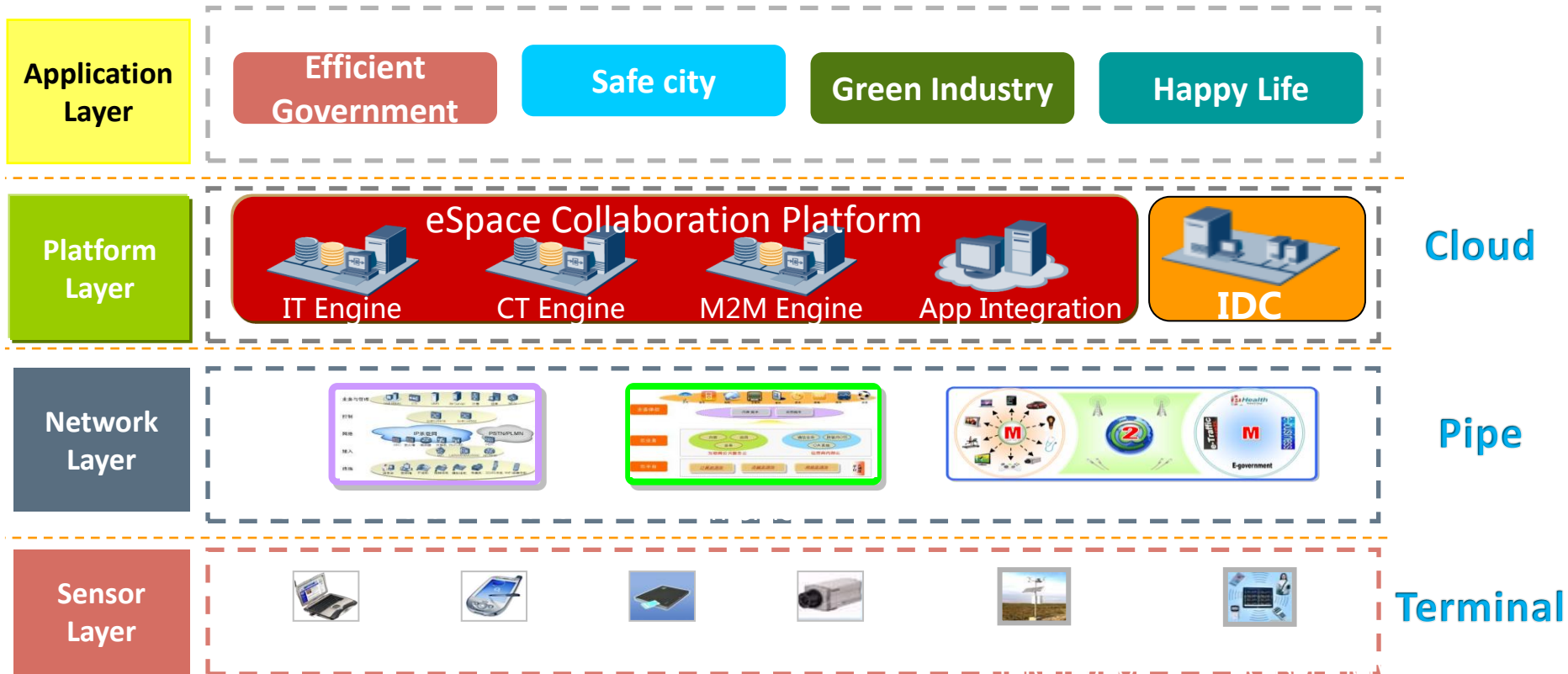


Sense and activities of an smart city

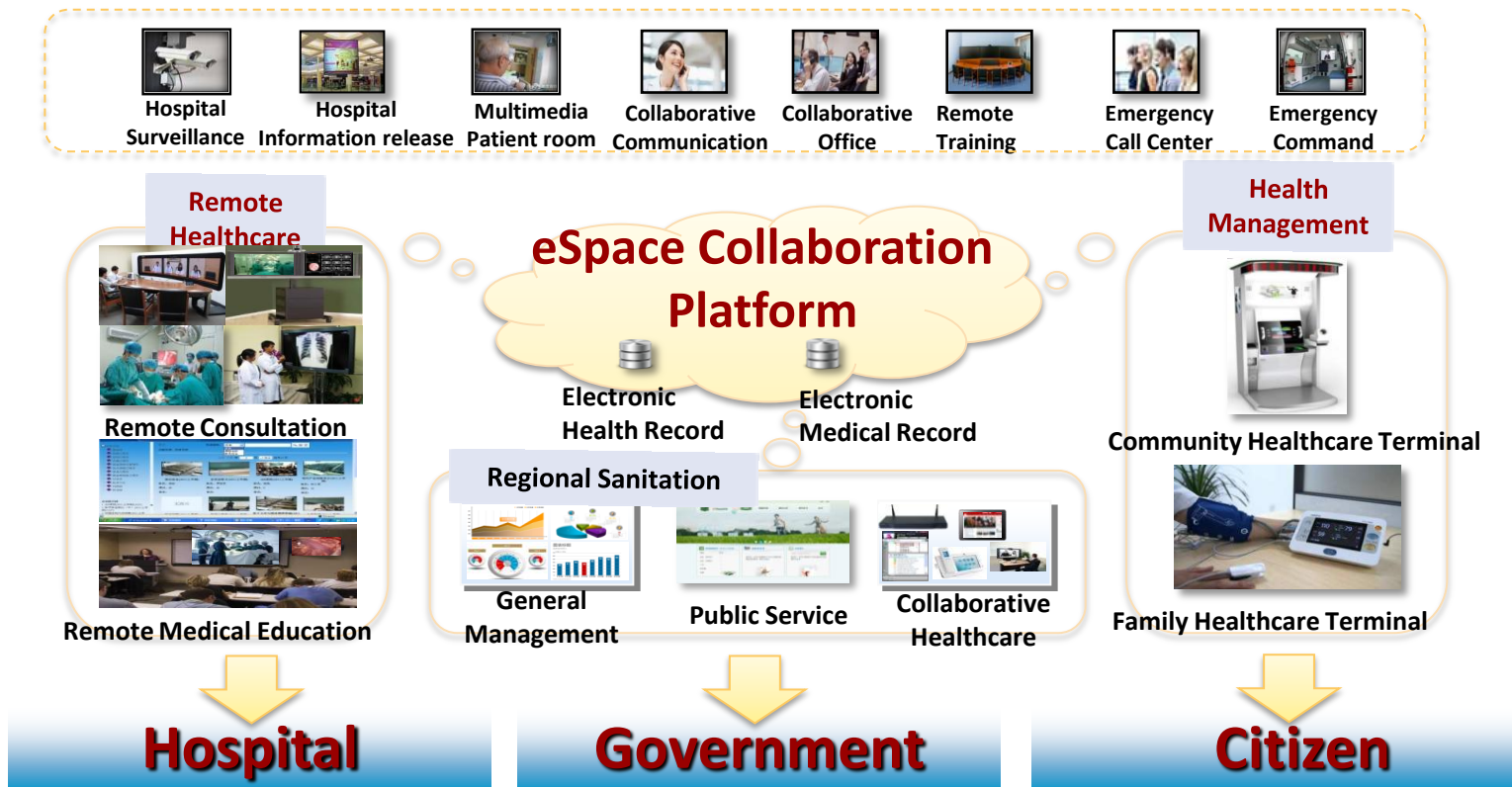
- Intelligent Traffic Solution
- Urban Emergency Solution
- Smart Industry Campus Solution
- e-Health Solution
-

- **Brain** of a smart city: Cloud Data Center
- **Nerve Network** of a smart city: communications network, Internet, and Internet of Things
- **Neuron** of a smart city: M2M terminals and gateways
- **Nerve Ending** of a smart : wireless sensing network (WSN), IVS

Layer Perspective – Anatomize Smart City



Smart Health- Make Life More Happy



Smart Transportation-Make Life More Convenient



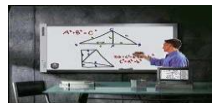
Smart Education-A Better Way To Learn



eCourse: Learning Resources Sharing



eLibrary: Digital Library System



eClass: Remote Interactive Learning platform



ePad: electronic schoolbag system



eClassroom: Multimedia Classroom



Communication Collaboration



Campus All-in-One Card



Campus Surveillance



Integrate and Extend Education Resource



Wildly Cover People



Enrich Learning Approach of Student

Government

Higher Education

General Education

Corporate Training

Social Training

Remote Client - Services In Everywhere



Create Account



Remit Money



Countermand Account



Payment



Financial Service



VTM terminal



Bank 7X24H
Non-Stop Services



Remote Client Center



Airport Lounge



Hotel



Rural District

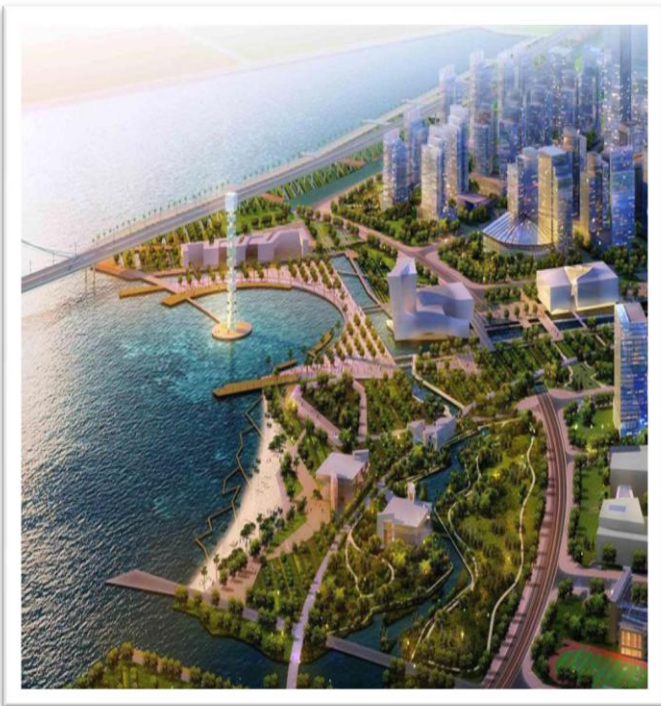


Habitant District



Office, Market

Smart Business – Collaboration Work Park



Unified
Communication



Contact Center



Cloud Desktop



Smart Park

One-stop ICT Service

Service On Demand

Hosting Service

Pay-as-you-use



Enterprises
In Smart Park

eLTE for Safe Cities: Building a Peaceful Society



Central London - UK

- Wireless Emergency Service Network based on 4G technology
 - HD Video real-time backhaul, all-round dimensional surveillance
 - Professional Broadband Trunking , "audio + video" multi-channel dispatching
- Multiagencies operations
- CPE, Smartphones, M2M, Videocameras

The Global Practice

Huawei Safe City solutions serves **40+** safe cities in **30+** countries



Openness - Cooperation - Win-win



1,100+

Solution Partners



5,100+

Channel and Service Partners



Open Lab



eSDK



HUAWEI

Enriching Life Through Communication