



Interference to satellite broadcasts

The BBC experience

Nigel Fry, Head of Distribution BBC Global News

10th June 2013

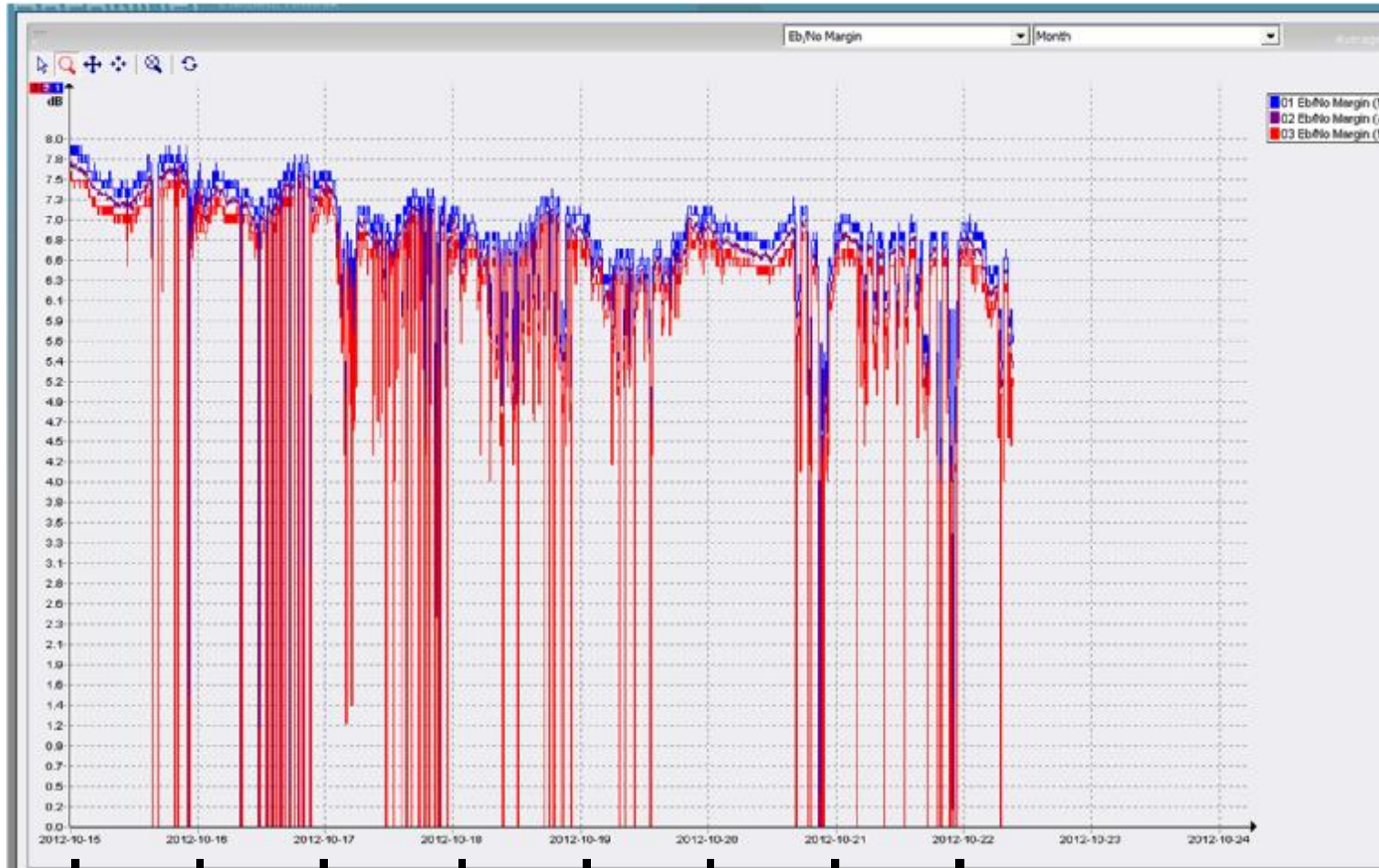
- Types of interference
- BBC experience of interference
- Process and action being taken
- The challenge for the ITU



Types of harmful interference

- C Band – spectrum sharing issues
 - UK solution, Recognised Spectrum Access
- Ku Band – contribution circuit issues
 - Carrier ID
- Ku band - uplink interference to DTH services
 - Affects many services
 - Affects a wide geographic area
 - Source can be located with an accuracy of 5km
 - No current solution

Incidents of harmful interference

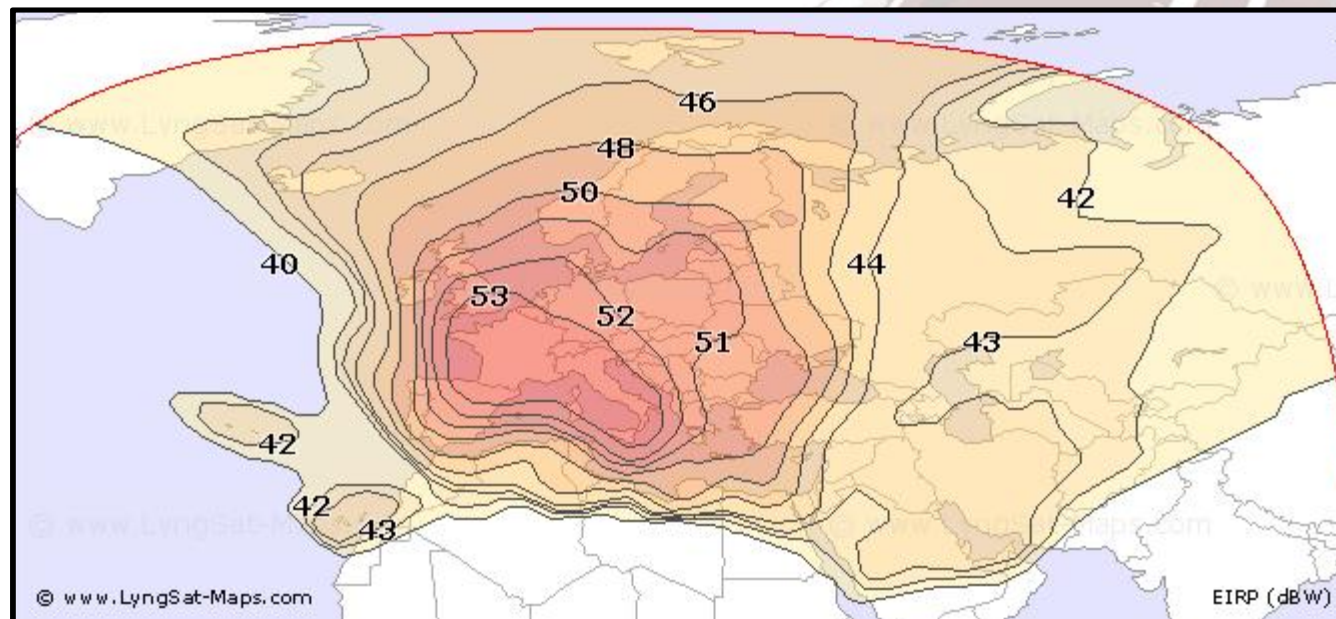


15th October 2012

22nd October 2012

Affect of uplink interference

- Uplink Interference – multichannel and international



Process and action being taken

- Technical
 - Satellite industry
 - Media industry
- Regulatory
 - ITU RRB
 - ITU PP 2010, WRC12,
 - Now PP 2014, WRC15



The challenge for the ITU

- The ITU is a technical body that works through achieving consensus.
- Intentional interference and matters relating to the internet are providing a 21st century challenge for the processes of both ITU-R and ITU-T
- Is the ITU the correct body to address these issues and if so how?

Thank you

nigel.fry@bbc.co.uk

The logo for BBC Global News, featuring the text "BBC GLOBAL NEWS" in white on a red square background. The background of the slide is a stylized globe with red and white stripes.

BBC
GLOBAL
NEWS