

ITUWebinars

Towards strengthened impact of ICTs on economic development in Europe

15 June 2020, 14.00-15.30

Follow us on twitter: @ITU_EUR
www.itu.int/go/EUR_ICTs_Impact_20

ITU Regional Initiative for Europe on Broadband infrastructure, broadcasting and spectrum management

ECONOMIC
GROWTH

BROADBAND
DEVELOPMENT

INFRASTRUCTURE
MAPPING

STRATEGIC
PROJECTS

POLICIES AND
STRATEGIES



Organized by:





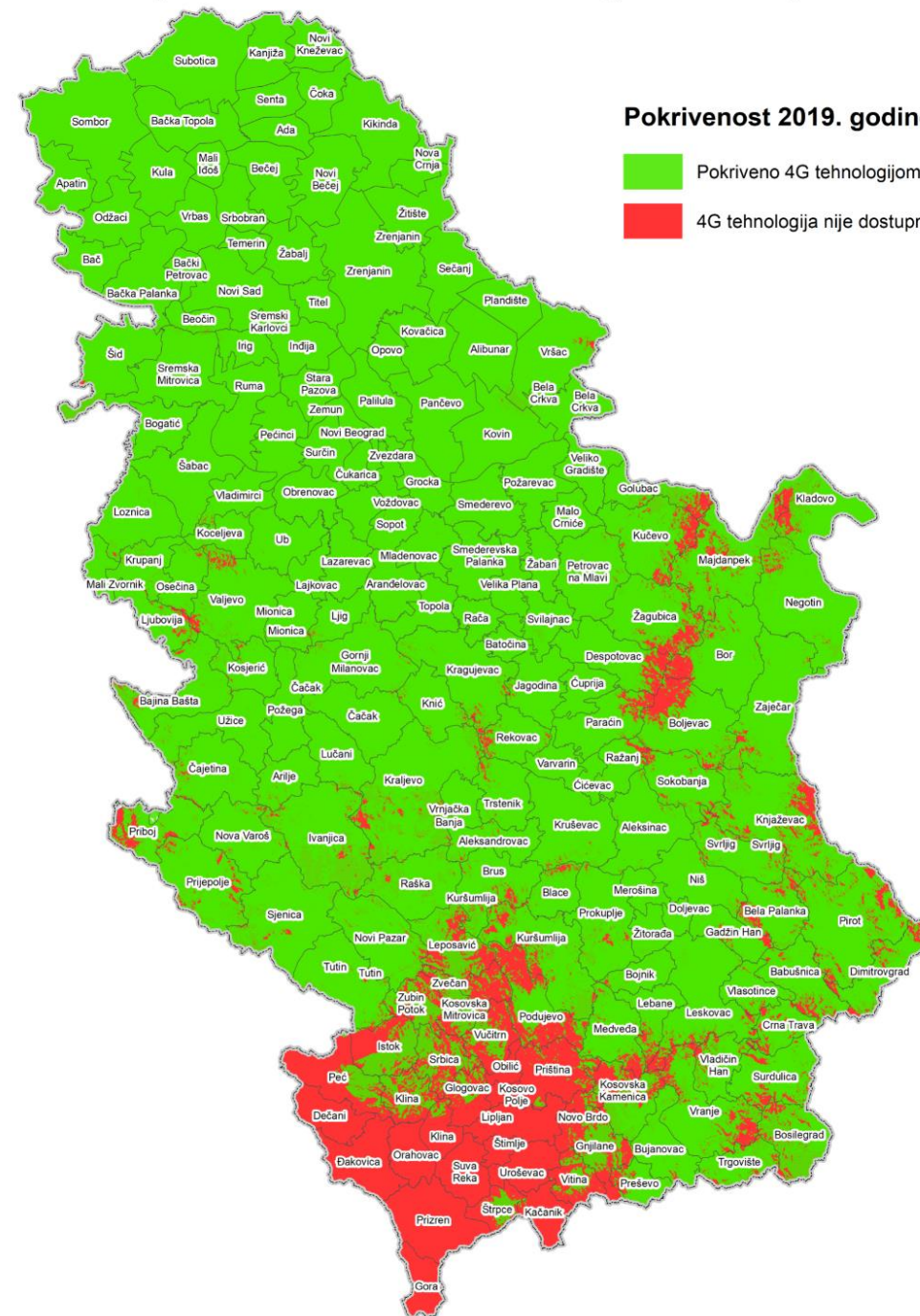
SERBIA RURAL BROADBAND DEVELOPMENT

- Milan Dobrijević, Head of Department for Digital Agenda Development



Mobile broadband availability

4G 2019 coverage, No of HH	% HH	% territory	No of HH without 4G coverage
2.477.390	99,58	84,36%	10.360





Fixed broadband mapping

Introductory remarks

- Data gathered from all market operators above **1%** market share
- Data from operators with less than **10%** market share total missing
- Conservative estimations
- Data resolution level is settlement (in Serbia there are more than **4600** settlements)

Conclusion

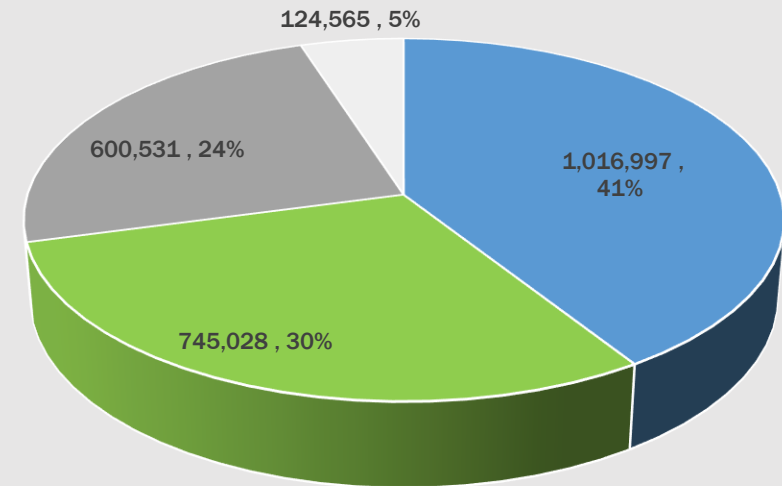
- Sample is suitable and relevant for the purpose
- Settlement resolution level provide us with enough data to be able to determent white and gray areas and start incentives scheme



Results – fixed broadband service availability

Total number of households	2.487.121	
	No of HH	%
HH with 100Mbps	1.016.997	40,89%
HH with capability between 30Mbps and 100Mbps	745.028	29,96%
HH with capability up to 30Mbps	600.531	24,15%
HH with no fixed broadband capability	124.565	5,01%

Fixed broadband service availability



- HH with 100Mbps
- HH with capability between 30Mbps and 100Mbps
- HH with capability up to 30Mbps
- HH with no fixed broadband capability



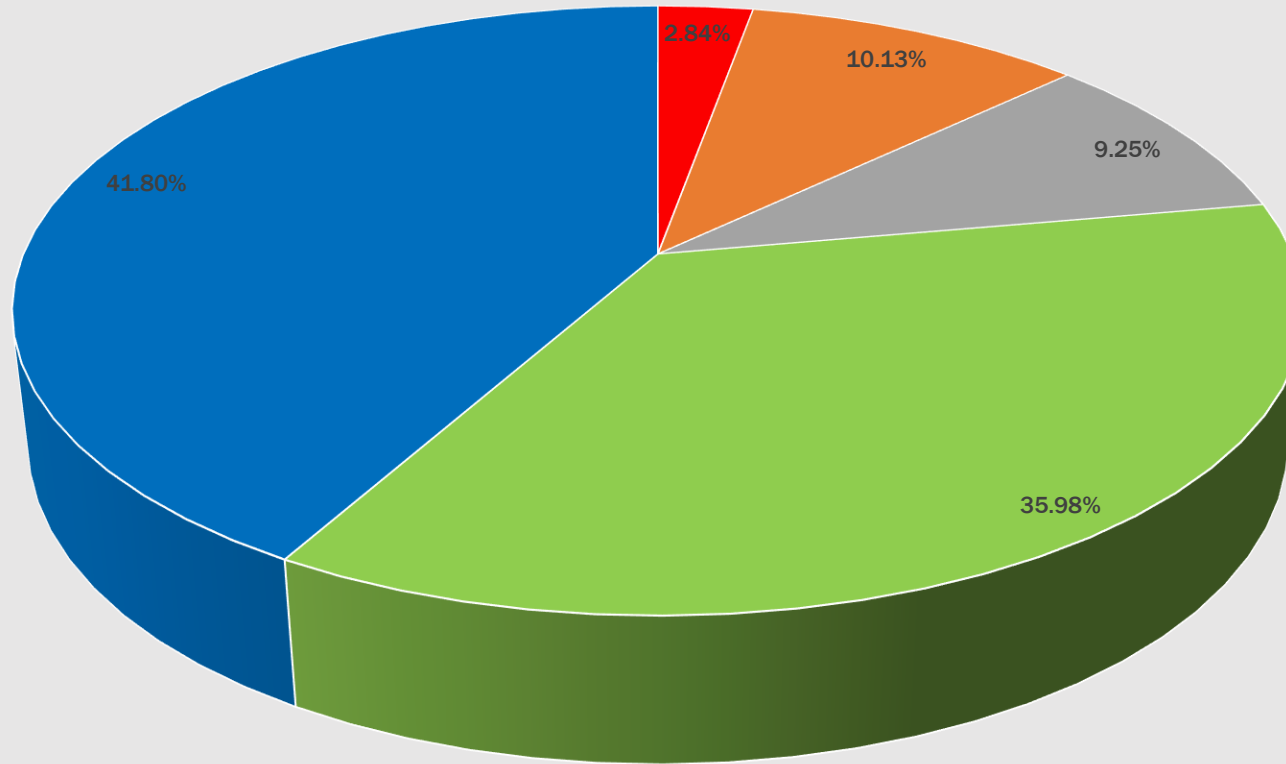
Categorisation of settlements per intervention necessity

	No of settlements	NO of HH in those settlements	% of HH	AVG NO of HH	Intervention necessity
No fixed broadband access	1.370	70.712	2,84%	52	YES – Universal service or CAPEX midmile subsidy
Less than 40% HH has access to 30Mbps+	1.518	251.960	10,13%	166	YES – CAPEX midmile subsidy
Between 40% and 60% HH has access to 30Mbps+	436	229.970	9,25%	527	? – monitor and intervene if necessary
More than 60% HH has access to 30Mbps+	989	894.895	35,98%	905	NO
More than 40% HH has access to 100Mbps+	356	1.039.584	41,80%	2920	NO



Categorisation of settlements per intervention necessity

% of households in intervention areas



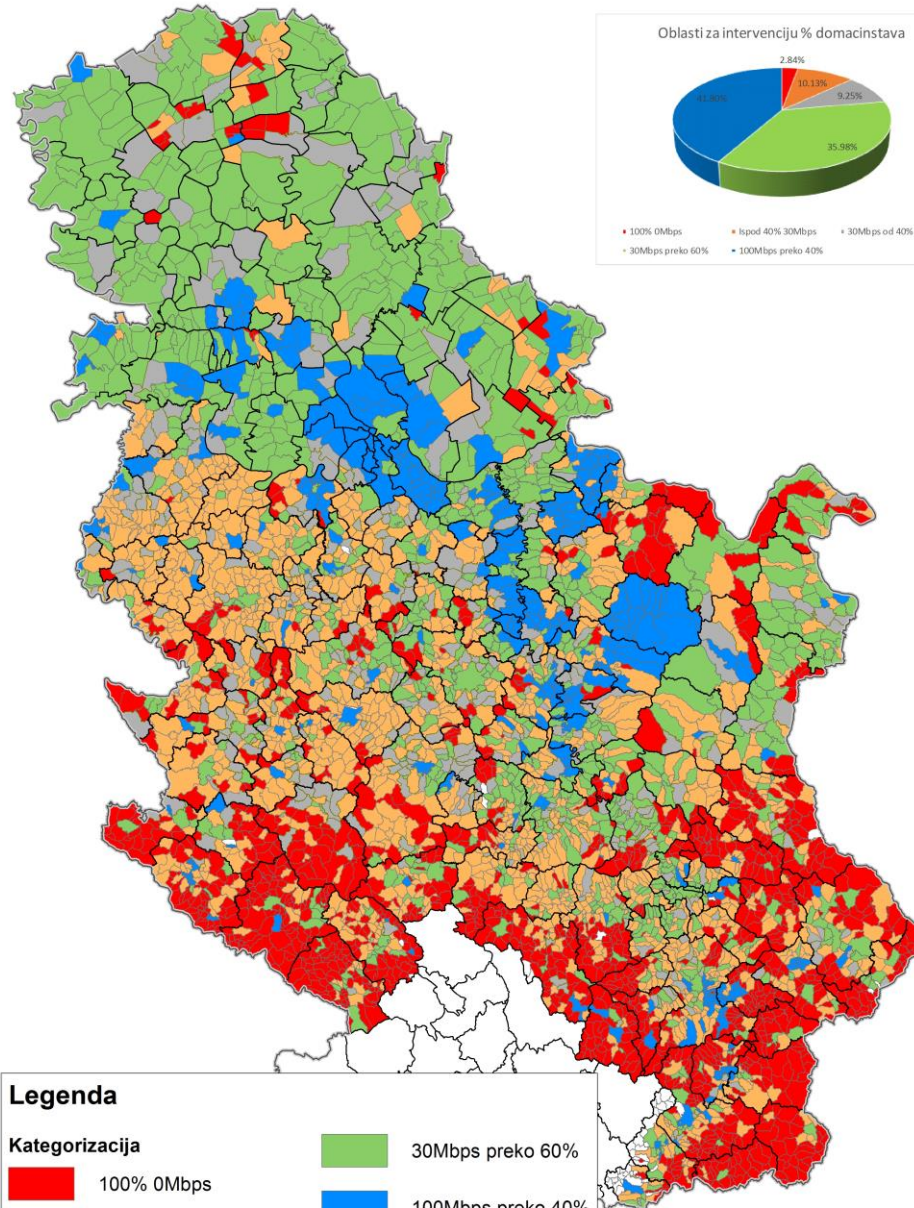
■ No fixed broadband access

■ Less than 40% HH has access to 30Mbps+

■ Between 40% and 60% HH has access to 30Mbps+







■ More than 60% HH has access to 30Mbps+

■ More than 40% HH has access to 100Mbps+



Legenda

Kategorizacija

- | | | | |
|---|----------------------|---|-------------------|
|  | 100% 0Mbps |  | 30Mbps preko 60% |
|  | Ispod 40% 30Mbps |  | 100Mbps preko 40% |
|  | 30Mbps od 40% do 60% |  | Nema podataka |



CAPEX midmile intervention

- **1518 settlements with 251.960 households are candidates for first phase of intervention**
- **Detailed analysis will result in selection of 600 settlements with ~90.000 households for first phase of intervention financed from 18M EUR EBRD loan**
- **Ministry will conduct open public call for selection of operator (private partner) for joint infrastructure construction**
- **Ministry will construct midmile part of infrastructure (from the point of present of operator backbone to the school* in target area) and give to the operator for long term 25 year usage**
- **Operator will construct last mile segment with obligation of coverage of 95%+ of households in target areas with at least 100Mbps service**
- **Operator will provide free 100Mbps internet service for the school in target area for free for period of 25 years**



Thank you!

Milan Dobrijević, Head of Department for Digital Agenda Development,
Ministry of Trade, Tourism and Telecommunications
milan.dobrijevic@mtt.gov.rs