



DigitalGlobe's Web-Based Streaming Services, FirstLook for Emergency Response

REGIONAL TRAINING ON THE USE OF DRONES, SATELLITE IMAGERY AND GIS

JUNE 07, 2018

ANDREW STEELE

SALES ENGINEERING MANAGER, DIGITALGLOBE ASIA-PACIFIC

See a better world.

Easy Web-Based Access to the Best Satellite Imagery



DigitalGlobe™ Basemap

+Basemap

Global coverage including historical imagery

+Daily

Daily Updates of New Imagery

+Vivid

Country-wide mosaics

+Metro

Metro-area mosaics

“Time Series” Products vs “Mosaic” Products



+Basemap

Basemap Standard provides an imagery time series for information extraction, change detection, and a basic map contextual layer

+Daily

Basemap +Daily provides the most current information over areas of interest for monitoring, security, and map maintenance

+Vivid

Basemap +Vivid provides the most consistent, visually vibrant mosaic at a country- or global-level, for map publishing, vis sim, and application maps

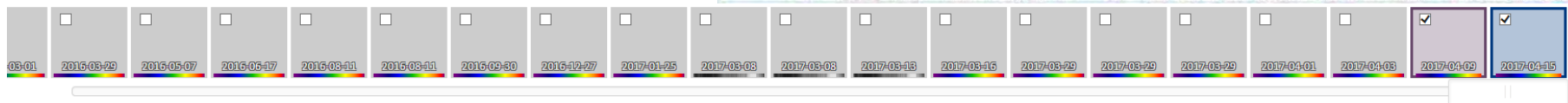
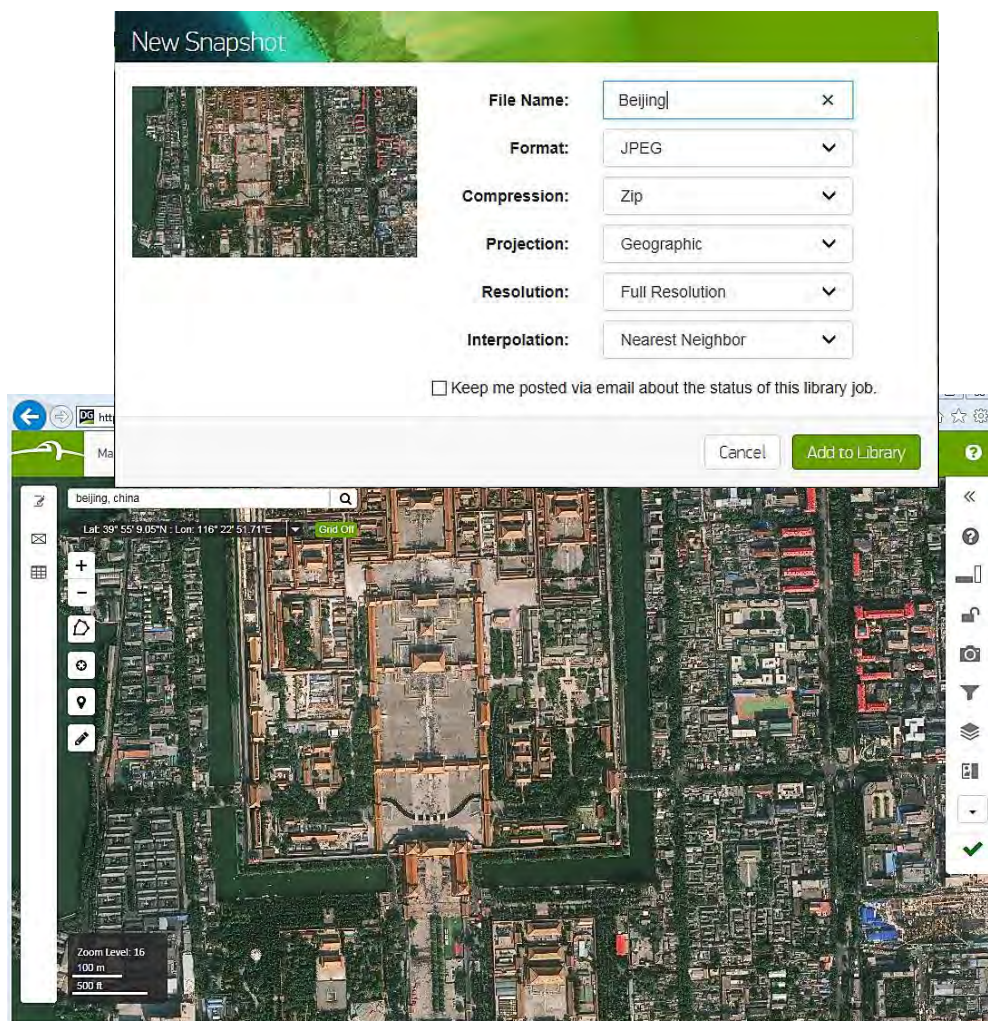
+Metro

Basemap +Metro provides a current, visually vibrant mosaic over metropolitan areas for route planning, urban development, and map publishing

What is Basemap?



- The highest quality imagery of Earth from space
- A new way of consuming and integrating satellite imagery into your workflow
- “Turnkey” imagery for the masses versus processing it yourself
- A suite of options to optimize and simplify the way you use DigitalGlobe imagery
- Subscription, cloud based access, or delivered offline



How is Basemap Consumed?



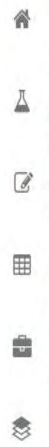
- Global or AOI delineated
- Subscription access for ongoing updates
 - ✓ Usage-based option
 - ✓ All inclusive option
- View and download images via our web console (MyDigitalGlobe)
- Online streaming via standard web service protocols
- Application integration with our ESRI plugin and standard formats
- Offline delivery via FTP, S3, media





Search by location name or coordinates...

Lat: 47° 55' 10.81"N Lon: 106° 54' 45.65"E Grid Off



Zoom Level: 18
30 m
100 ft



https://services.digitalglobe.com/myDigitalGlobe/#

Basemap +Vivid offers beautiful mosaic coverage anywhere



- Beautiful, consistent large area image mosaics
- Coverage of 140+ million km² of the Earth's landmass
- Produced from 2014-2017
- Ongoing updates improve currency and aesthetics
 - ✓ 40% of the landmass every year (green)
 - ✓ The rest of the world every 1-3 years (brown)



Basemap +Metro offers current imagery coverage of metros



- The highest quality image mosaics, refreshed annually
- 2500 Metro areas available today, with additional areas on the way!
- 450 Metro areas with complete 30cm coverage





Search by location name or coordinates...



Lat: 36° 44' 4.13"N : Lon: 2° 57' 26.57"E



Grid Off



Zoom Level: 11

5 km

3 mi

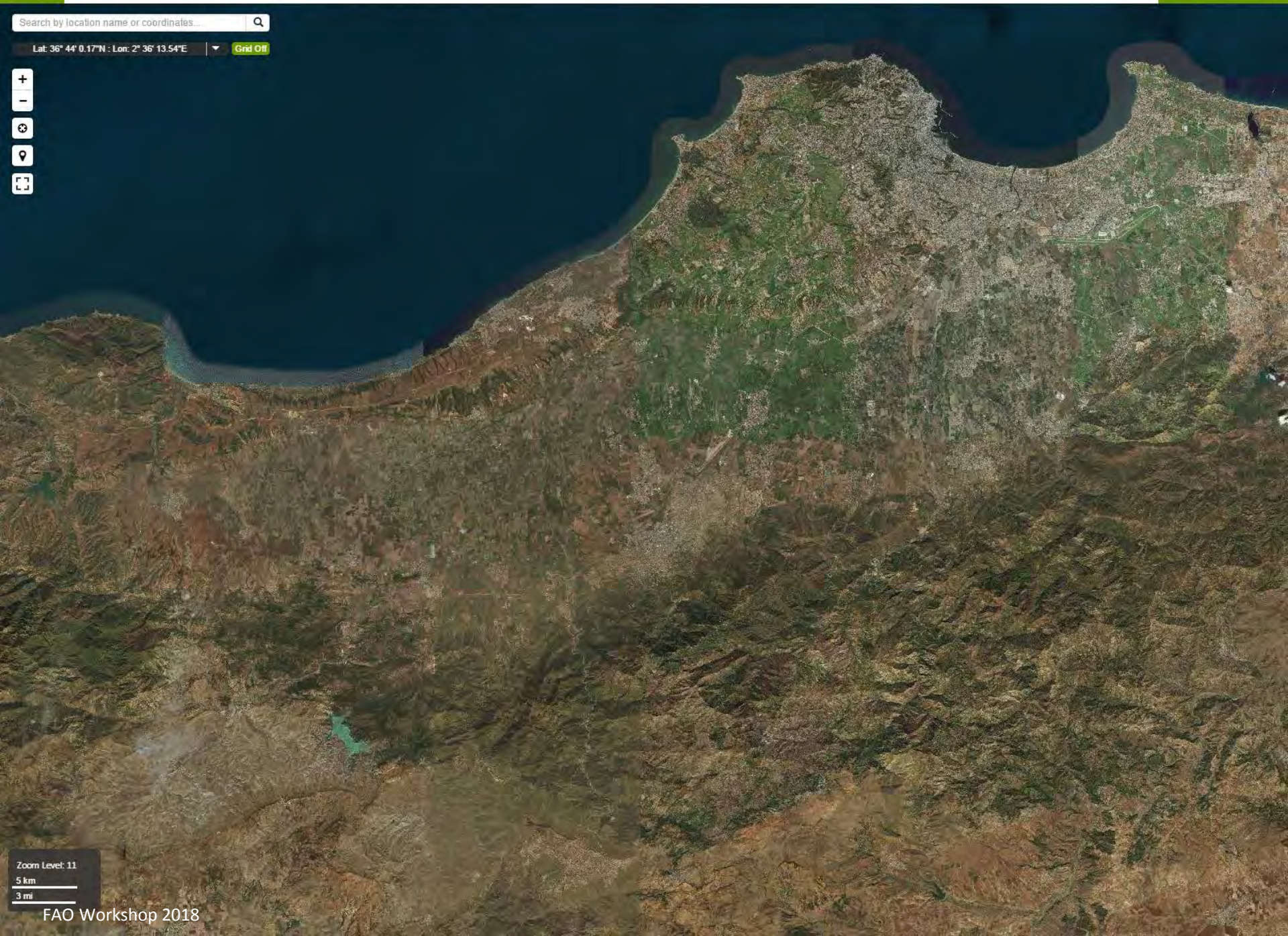


Search by location name or coordinates...



Lat: 36° 44' 0.17"N : Lon: 2° 36' 13.54"E

Grid Off



Zoom Level: 11

5 km

3 mi



Search by location name or coordinates...



Lat: 25° 16' 46.09"N : Lon: 55° 18' 26.06"E

Grid Off



Zoom Level: 11
5 km
3 mi



Search by location name or coordinates...



Lat: 25° 26' 4.52"N : Lon: 55° 2' 14.57"E

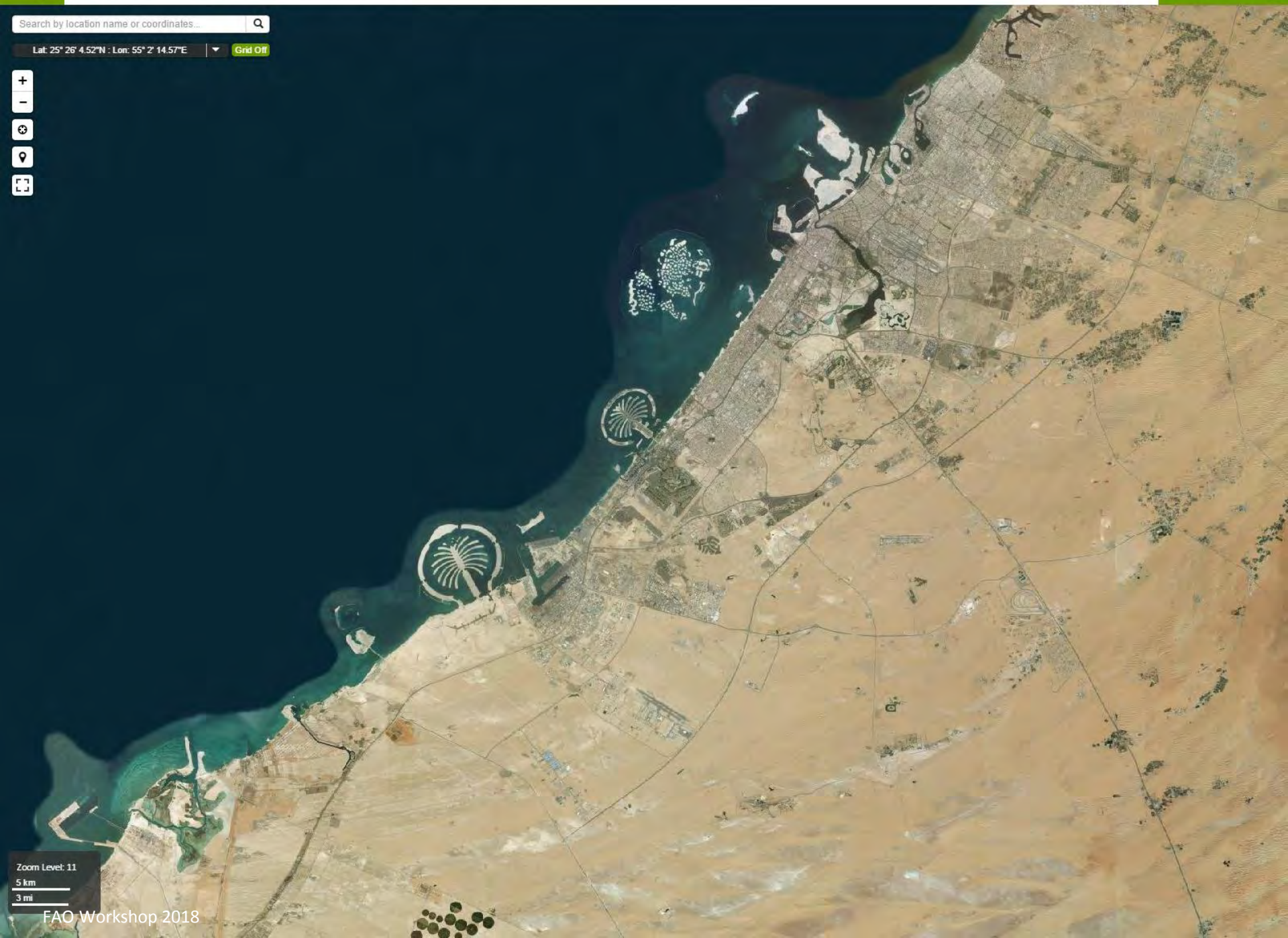
Grid Off



Zoom Level: 11

5 km

3 mi



DigitalGlobe FirstLook

Geospatial data for major global crisis events



FirstLook offers imagery coverage of major global events



- Imagery coverage of 200+ major global events annually, with option for coverage of additional custom “local” events
- Image access within hours after collection
- Pre- and post-event imagery to enable change/damage assessment



June 27, 2017 image of the landslide in Maoxian county, Sichuan province, China

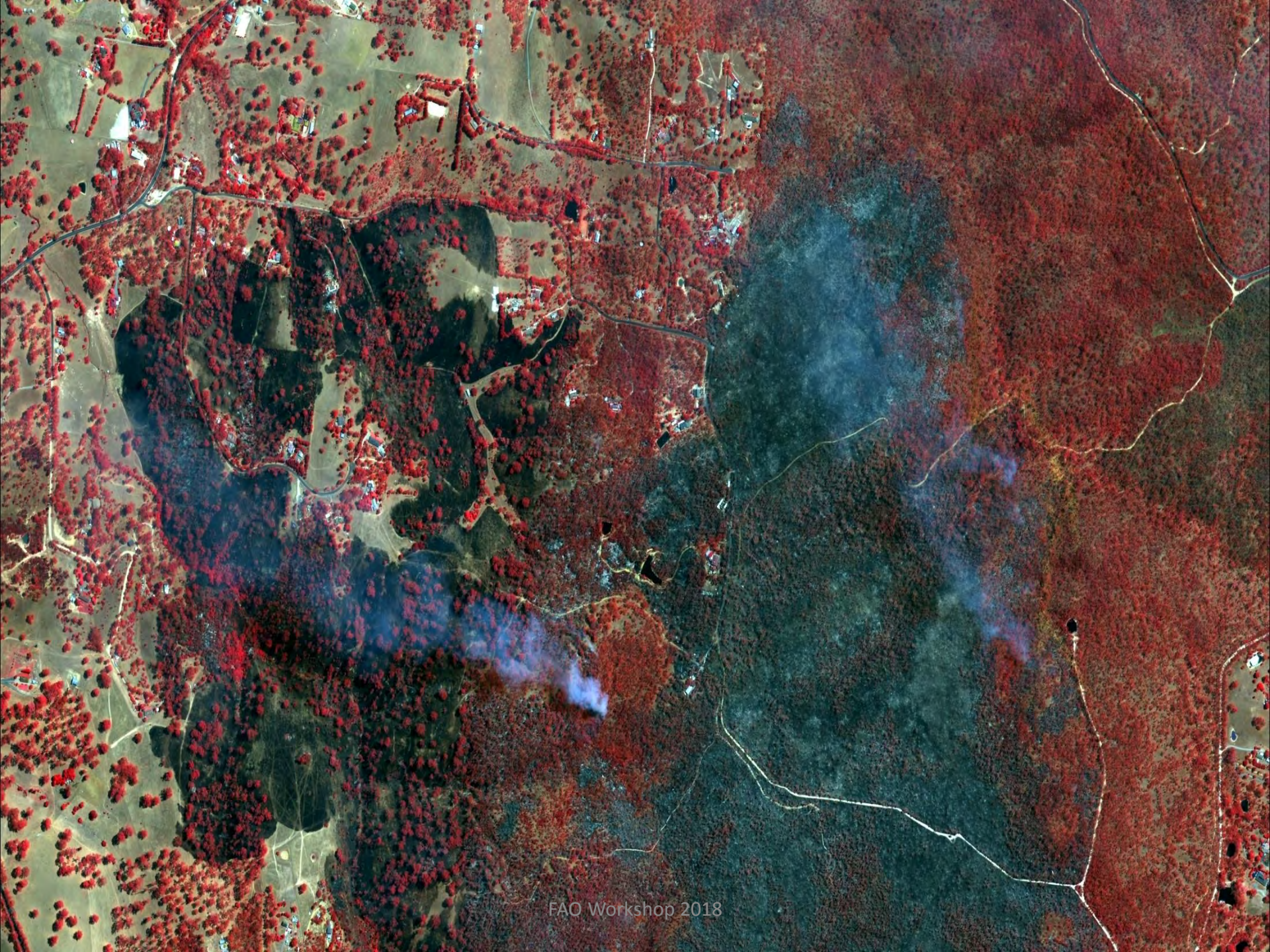



DigitalGlobe
FirstLook




DigitalGlobe
FirstLook



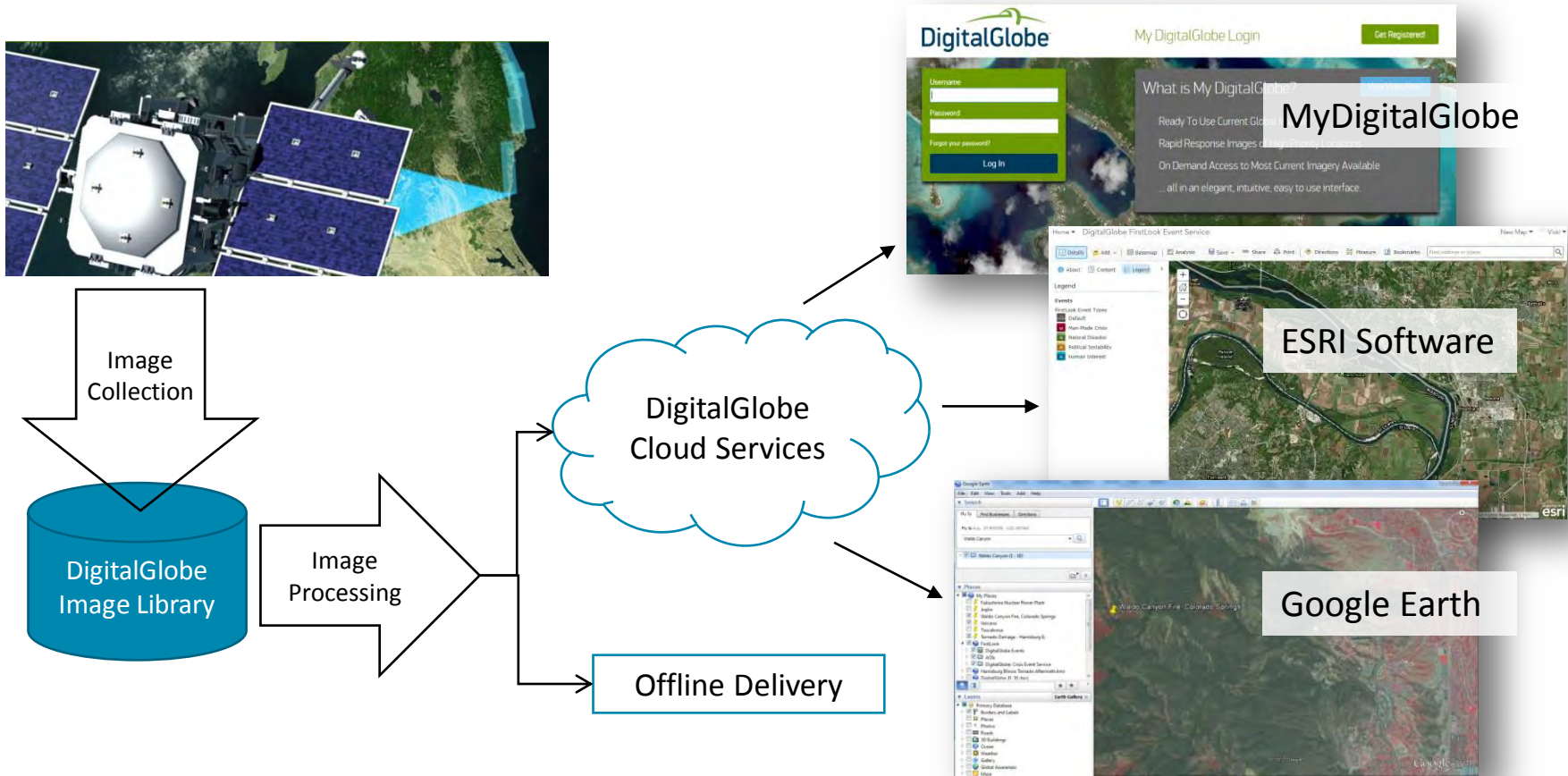


DigitalGlobe's FirstLook team continually monitors world situations.

When an event is identified, the FirstLook team “activates” a FirstLook Event, which includes

- ✓ Sending an Event notification with event details (overview, coordinates)
- ✓ Selecting pre-event imagery from the DigitalGlobe Image Library; imagery available within hours of event activation
- ✓ Collecting initial post-event imagery over the impacted area(s), typically with 24-48 hours; imagery available within hours of collection
- ✓ Collecting additional imagery over the impacted area(s), based on the event type, impact severity and customer feedback

FirstLook imagery is available within hours of collection, online via the MyDigitalGlobe user interface or any OGC compatible software

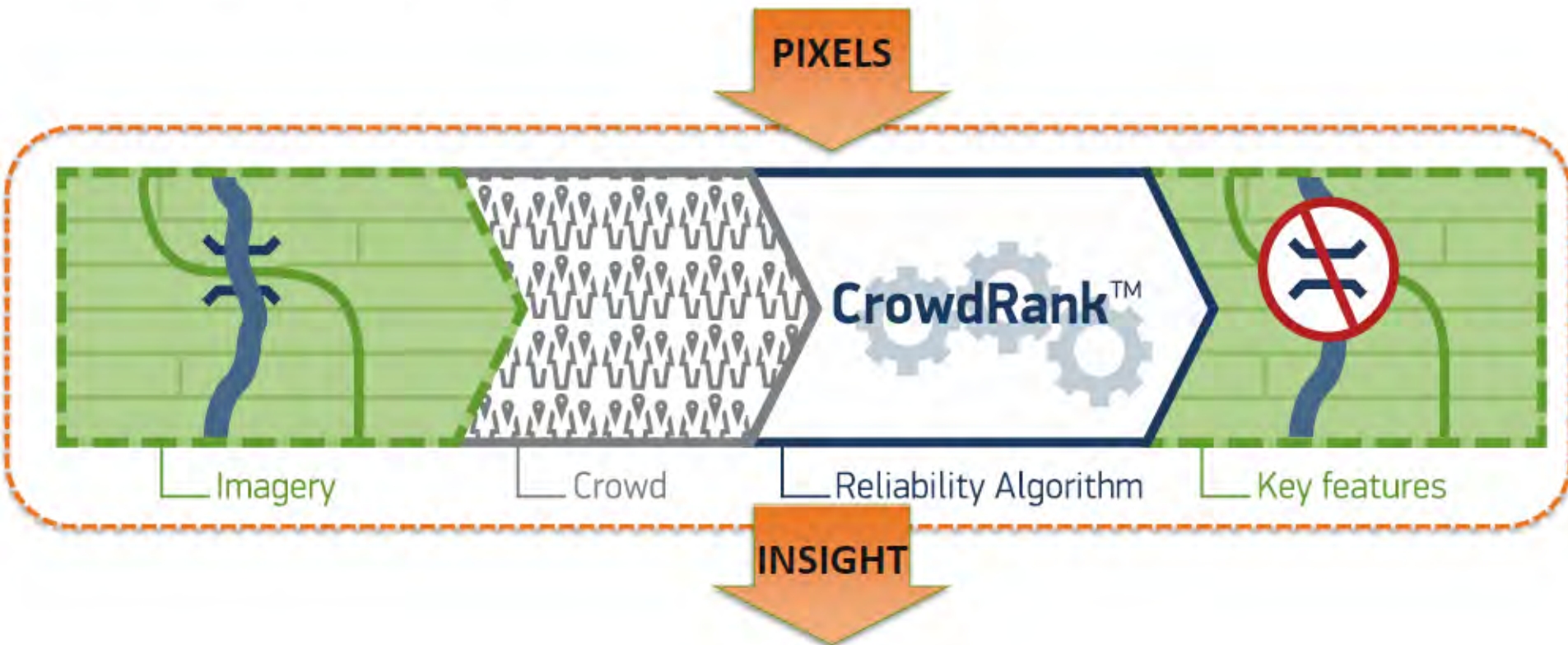


Tomnod Crowdsourcing

Capability: DigitalGlobe collects 2,500,000 km² of high-resolution imagery ... every day!

Challenge: How can we exploit mountains of imagery?

Solution: *Fast, reliable* insight from imagery using crowdsourcing



FirstLook Plus: Adelaide Fire January 2015



FirstLook Even Activated / Imagery Tasked

FirstLook Event Service
NATURAL DISASTER


DigitalGlobe™

N

FirstLook Event: Wildfire near Adelaide, Australia was created on 2015-01-05

The Sampson Flat fire started 02 January 2015 near Adelaide, Australia. The cause of the fire is still under investigation but is believed to be human related.

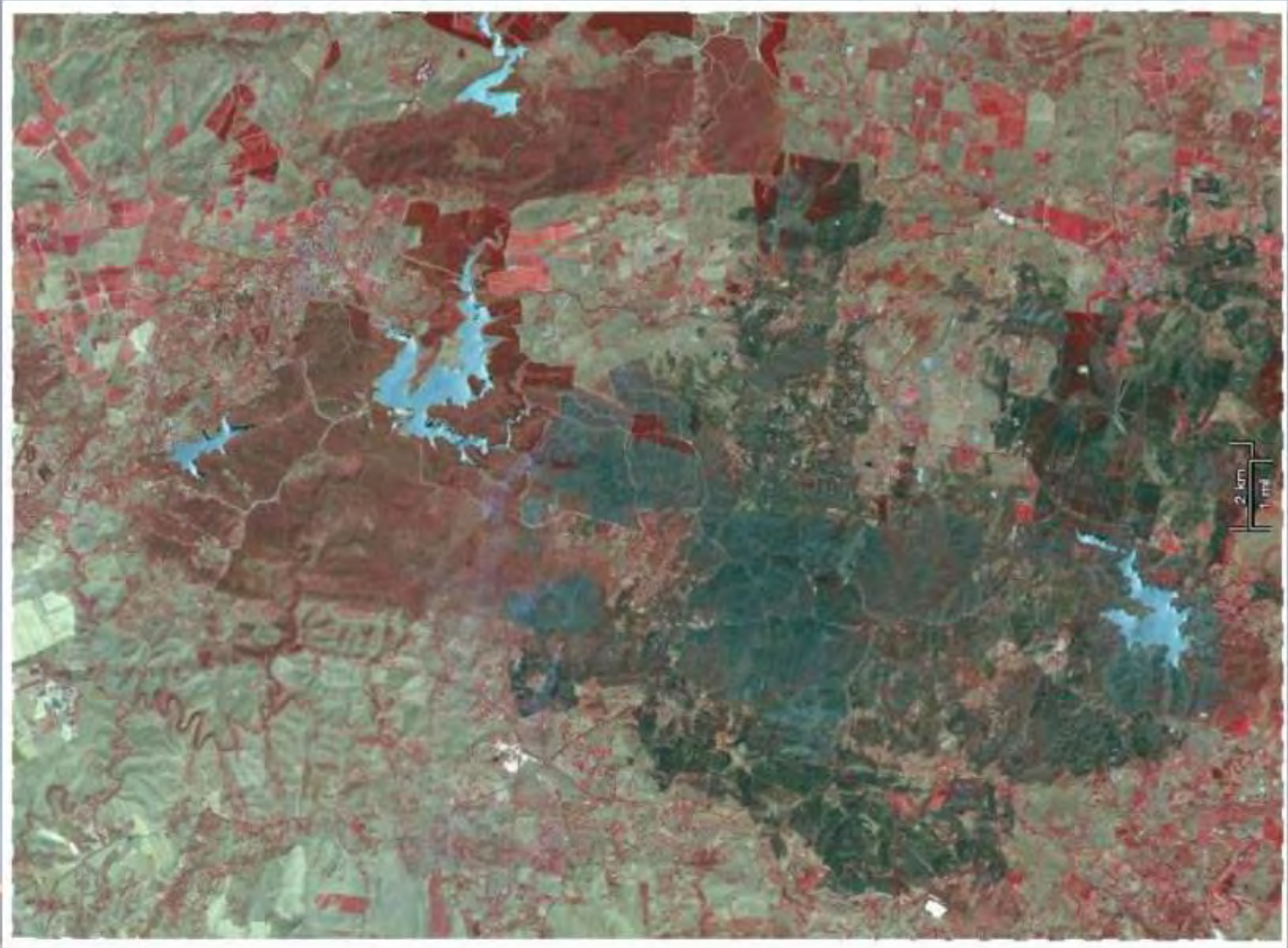
Related: <http://www.cbsnews.com/news/australia-wildfires-leave-thousands-homeless/>

Latitude: -34.7334 | Longitude: 138.851

To find out more please visit the [FirstLook Product page](#).

FirstLook Monitoring Team

WorldView – 2 Image Captured



Crowdsourcing Platform is Launched

tomnod Wildfire near Adelaide, Australia Sign In

Getting Started
Share this Location
Jump to Unexplored Area

Your Campaign Progress
9 1 10

11 Agree

Close Tomnod Hints Next

If you get stuck in clouds or smoke, try jumping to a new area.

Mon 1/5/2015 1:07 AM UTC
Pre-Event Post-Event

Crowd is able to View Pre & Post-Event Imagery

Toggle Crosshairs

Toggle Crosshairs

Destroyed Building

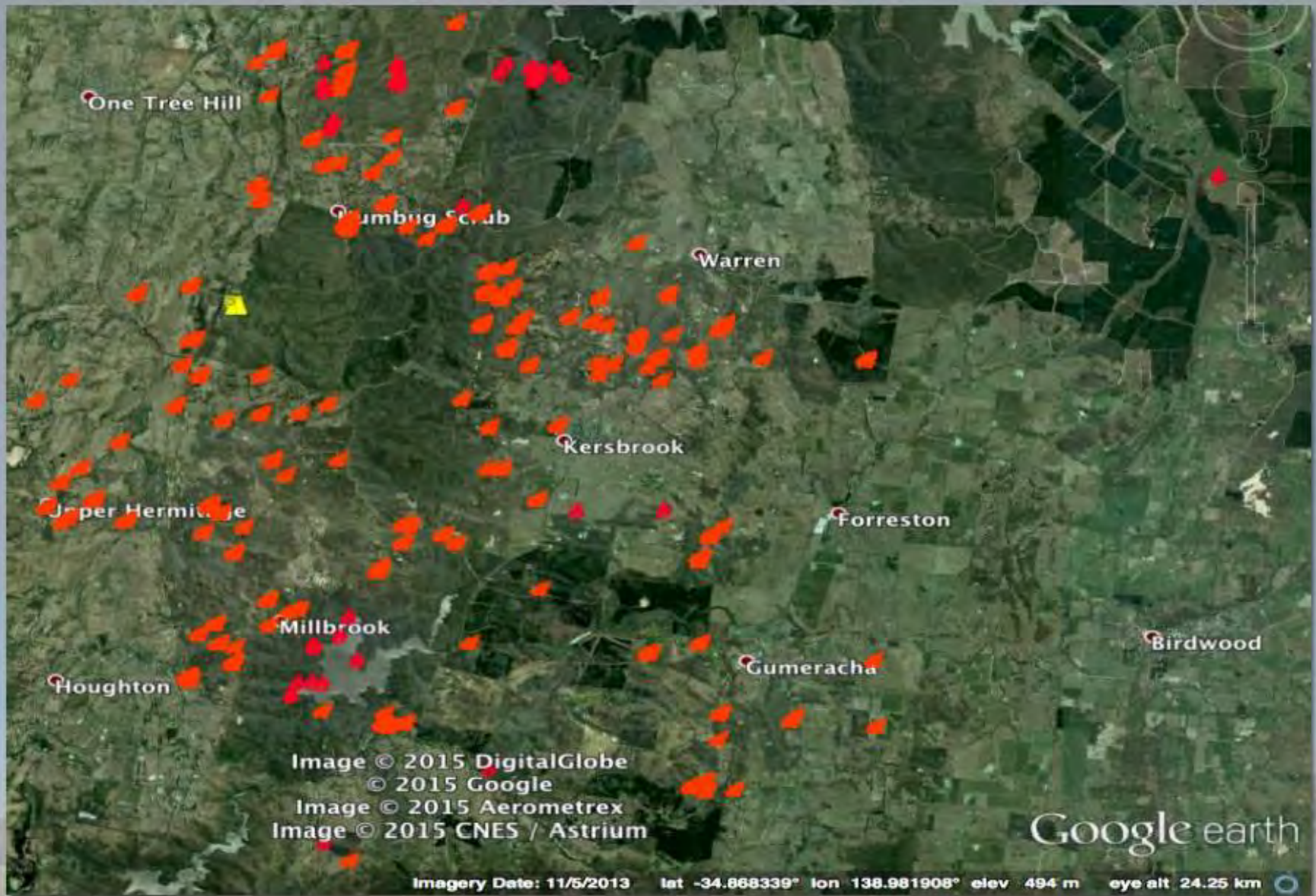
Overlay 3116 📷 2014-01-01 00:00:00

Overlay 3176 📷 2015-01-05 01:00:00 [Share Image](#)

Before

After

Easy distribution via KMZ, SHP, WFS...



Rapid, light-weight delivery to the field



Burned Building ID 38246



Image © DigitalGlobe 2015

CrowdRank: 100%
Confirmation: 77
people

See this point on **tomnod**

Directions: [To here](#) - [From here](#)

Aerometrex

© 2015 Google

Image © 2015 DigitalGlobe

Google earth

