

True Smart Life with IoT

IoT will exceed **mobile** by 2020 with global telcos launching connected devices, creating less-SIM reliant value propositions based on ...

Volume of connected devices (2010-20F; Billions)

More devices will continue to be connected

No. of connected devices [bn]



Global case studies



Car Insurance

Data about driving behavior used by insurance firm to estimate risks & define policies



Connected gadgets

T mobile has "wearable rate plan" for smartwatch and sells the watch upfront or on a financing plan



Connected cars

Verizon commercialize an module that allows to troubleshoot and monitor vehicle from smartphone



Connected camera

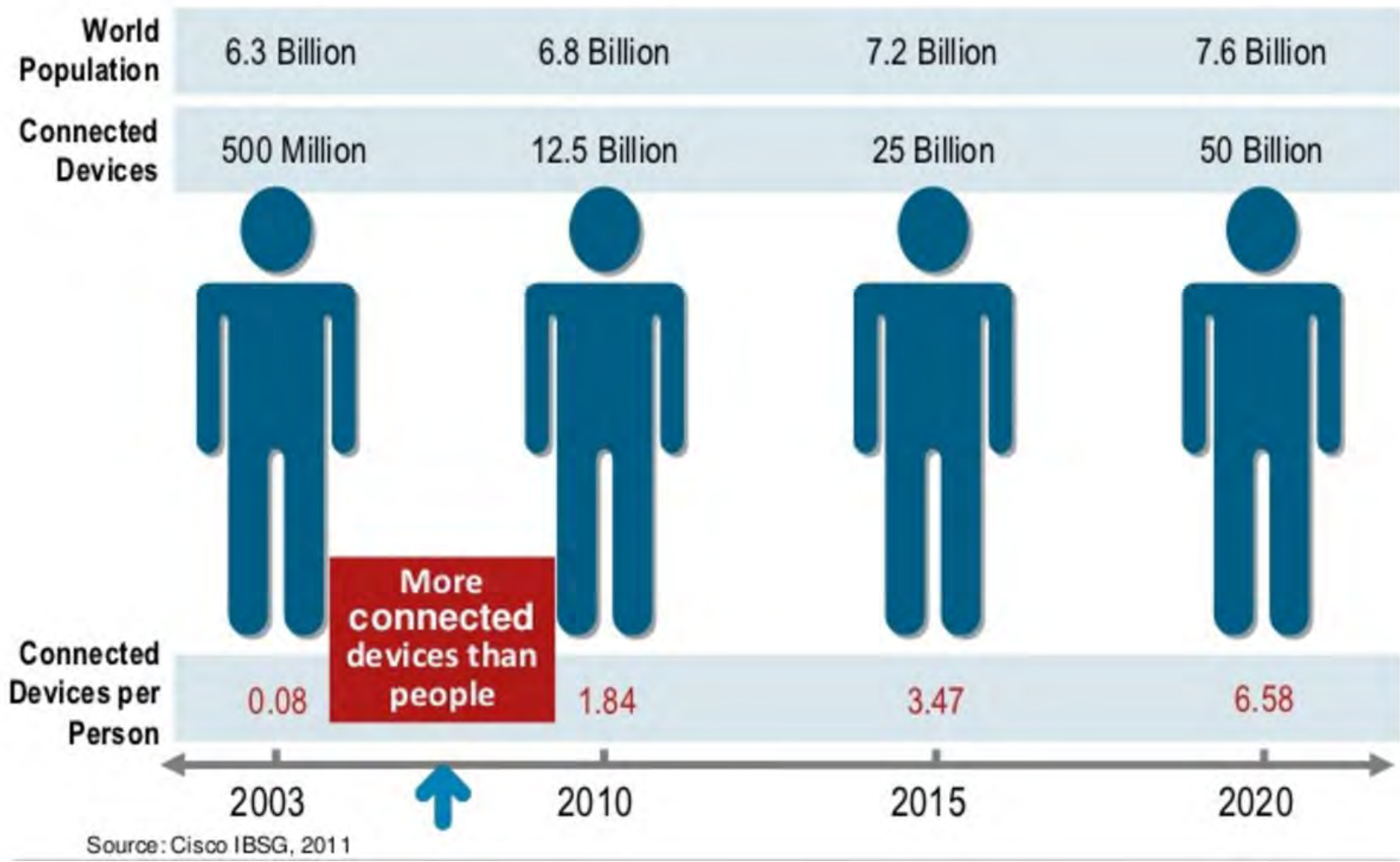
EE launched camera in with its 4G, allowing live stream (part of Connected strategy)



Connected home

Launched home automation solution with a specific control unit and functionalities

The Internet of Things is already here



Typical Views of the Internet of Things



True Smart Home



True Smart Health



True Smart Business



True Smart City

True Smart Home



Security

- Smart Home Gateway



Monitoring

Keep up with your family... no matter where you are.

- *Sensor Connectivity Protocol

- Connectivity from Gateway to Platform

- Security and Management Platform



Energy Management



Automation

Smart Home Protocol Example: How to Select



- IP-Device(s)
(Discovery)
- DLNA[®]
 - UPnP[™]
 - mDNS
 - Bonjour

Related Factors

- Frequency
- Power consumption
- Connectivity Length
- Supported Device

IPv6-capable
IPv4-capable

Smart Home : Protocol Wars

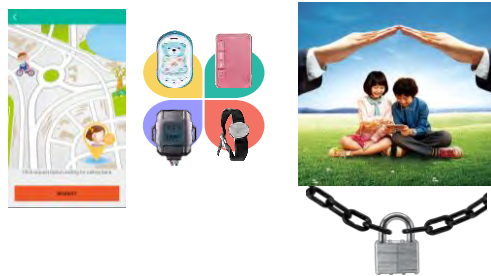


Protocol Wars

True Smart Health/Family



Kid Watch phone



- Easy to use
- One Touch to call
- Few button to interface
- Battery lifetime
- Build for kid
- Fashion and colorful
- Location
- Intelligent Emergency
- Support Android and iOS
- Communication



Smart Transportation



Smart Meter



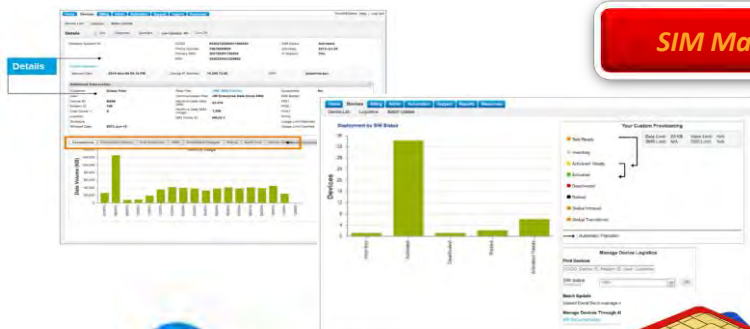
public surveillance

- Regulatory
- Public safety
- Privacy concern
- Location
- Wide Range connection
- Connection bandwidth
- Application for citizen
- Integrated smart city framework



Smart Transportation

- Accuracy
- Coverage
- Center Control

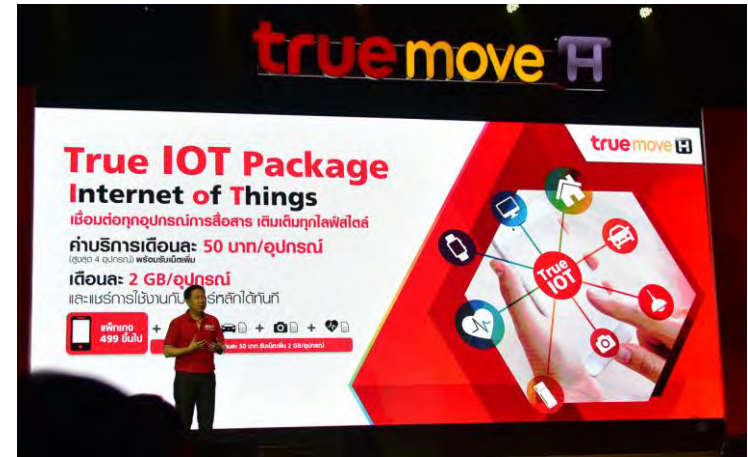


SIM Management

- Self Management
- Real Time
- Automation Alert
- Control Usage
- Coverage
- Accuracy



True IoT Capability



Accessibility

Capacity

Usability



Aims to cover 10 million homes nationwide, from 6 million homes at the end of 2015



True Mobile Group ended 2015 with 19.1 million subscribers

Q&A

