



30TH WORLD RADIOCOMMUNICATION SEMINAR

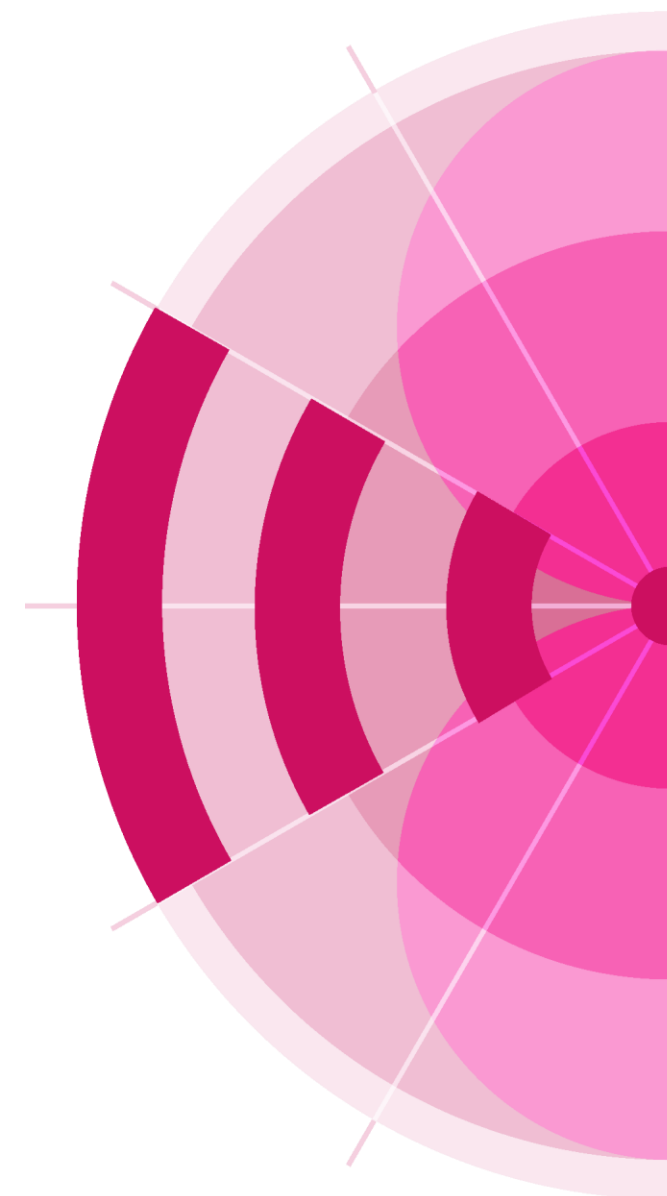
24 – 28 October 2022
Geneva, Switzerland

Terrestrial Stations Notification of frequency assignments for recording in the Master Register and Plans

BR Terrestrial Services Department
International Telecommunication Union

www.itu.int/go/wrs-22

#ITUWRS



MIFR/Master Register

Frequency assignments that are in operation



Collection of provisions/regulations

- to use the radio-spectrum without causing interference

International treaty:

- Administrations are obliged to apply these provisions
- International recognition **No 8.3**

Other administration shall take into consideration those assignments that are already recorded in MIFR



Plan : Regional/World



Frequencies that are reserved

- Administrations have reserved certain frequencies for future use, during regional planning conferences
- Within a frequency band, for a specific service and within a defined area;



When in operation:

- Must notify for its recording in the MIFR
- International recognition **No 8.3**

Notification

Recording in MIFR

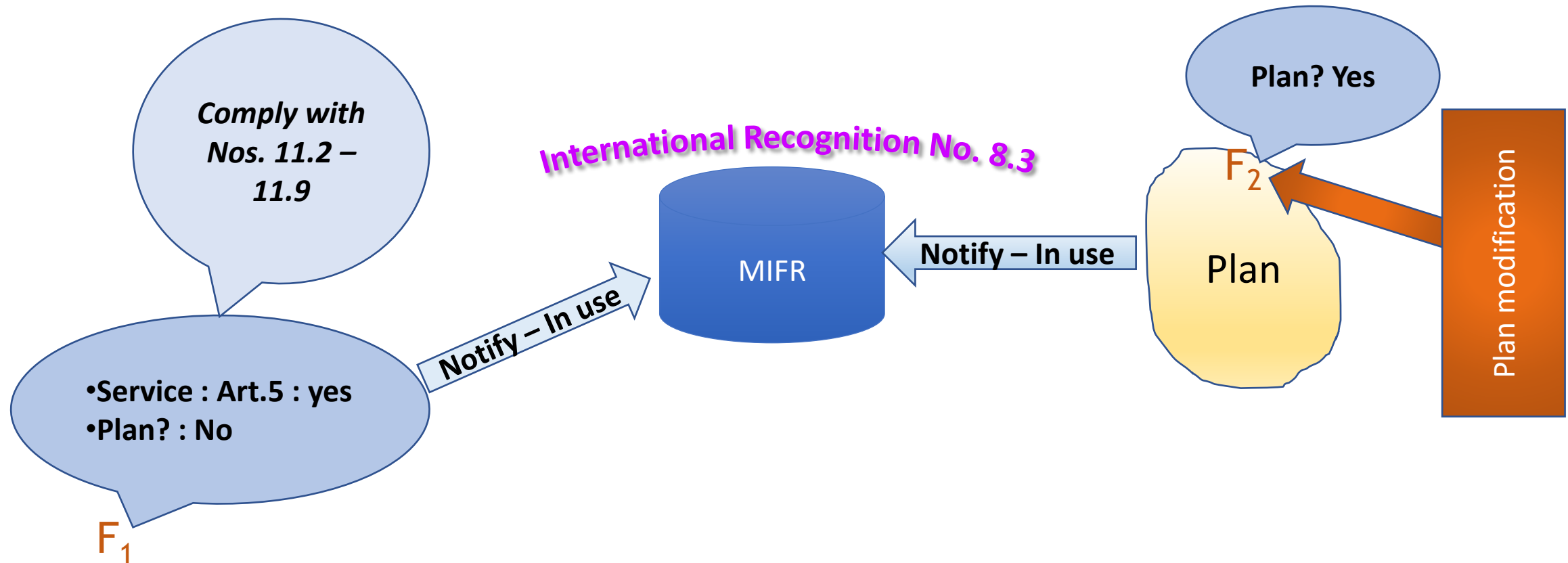
- Which frequency assignments should be registered?
- When to notify?

Modify Plans

- Add new or modify/suppress a frequency assignment
- Can be notified when necessary

- ✓ Data items to notify
- ✓ How to notify and submit

Principal of the notification procedures for recording in the Master Register (MIFR) – Art. 11



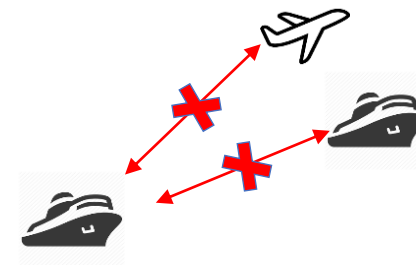
Notification under Art.11

NOTIFIED (Nos. 11.3 – 11.9)

- ✓ Capable of causing harmful interference to any service of another administration;
- ✓ Used for International radiocommunication;
- ✓ Subject to world/regional frequency allotment/assignment plan which does not have its own notification procedure;
- ✓ Subject to the Art. 9 coordination procedure;
- ✓ Request for international recognition;
- ✓ For information only (RR 4.4).

NOT BE NOTIFIED (Nos. 11.13 – 11.14)

- × Assignments to stations in the amateur service;
- × Assignments to ship stations (ship to ship) and to mobile stations of other services



- × Assignments involving specific frequencies which are prescribed by RR for common use – as they are already in the Master Register

Notification to the Bureau (1/3)

- Which data items to notify?
 - For recording in the Master Register:
 - Administrations shall provide the relevant characteristics listed in Appendix 4 to the RR (No. 11.15);
 - For modifying a given Plan:
 - Administrations shall provide the relevant characteristics listed in the Annexes of the relevant Agreement;
- Created different notice types to facilitate the notification
- Consult the Preface to the BR IFIC:
 - Symbols and codes are defined for some data items, such as:
 - ❖ Class of station, Nature of service, etc.;

<http://www.itu.int/en/ITU-R/terrestrial/brific/Pages/default.aspx>

Notification to the Bureau (2/3)

➤ When to notify?

➤ For the recording in the **Master Register (MIFR)**, the notices shall reach the Bureau (Nos. 11.24 – 11.25):

➤ Not earlier than **three years** before the assignment is brought into use, for terrestrial stations involved in coordination with a satellite network;

➤ Not earlier than **three months** before the assignment is brought into use, for all other terrestrial stations;

➤ **To modify the Plan:**

➤ Can be sent any time when required.

Notification to the Bureau (3/3)

- How to notify the data items?
 - Prepare a notice for each frequency and for each station;
 - Exception if the same frequency is re-used with identical technical characteristics many times within a given area:
 - A single notice can be used having the typical characteristics of one station of the network (RR11.17);
 - ❖ Does not apply to all services nor to all frequency bands (**Nos. 11.18 – 11.21B**):
 - ❖ Stations covered by Allotment Plans in App. 25, App.26 and App.27;
 - ❖ Broadcasting stations;
 - ❖ Terrestrial stations within the coordination area of an earth station, etc.

Notices: Grouped by categories

LFMF

Low and medium frequency bands for sound broadcasting
T03 (Region 1 and 3), T04 (Region 2)

FMTV

VHF and UHF frequency bands for sound and television broadcasting
T01, T02, GS1, GT1, GS2, GT2, GB1

FXM

Fixed, mobile and other terrestrial services
T11, T12, T13, T14, T15, T16, T17, G11, G12, G13, G14

Electronic notice file format

```
<HEAD>
t_adm=HNG
</HEAD>
```

```
<NOTICE>
t_ <NOTICE>
t_ t_n <NOTICE>
t_ t_d t_notice_type=T12
t_ t_fr t_d_adm_ntc=2010-11-26
t_ t_fr t_fragment=NTFD_RR
t_ t_si t_freq_assgn=128.1500
t_ t_p t_station_id=AIR AMBULANCE
t_ t_a t_prov=RR11.2
t_ t_c t_adm_ref_id=SF22125
t_ t_si t_ctry=HNG
t_ t_d t_site_name=BUDAORS
t_ t_is t_d_inuse=2010-08-01
t_ t_n t_is_resub=False
t_ t_a t_nat_srv=OT
t_ t_o t_addr_code=A
t_ t_a t_op_agcy=006
t_ t_si t_action=ADD
t_ t_e t_stn_cls=FD
t_ t_b t_emi_cls=A3EJN
t_ t_lc t_bdwidth_cde=6K00
t_ t_la t_long=+0185956
t_ t_o t_lat=+465959
t_ t_o t_op_hh_fr=00:00
t_ t_o t_op_hh_to=24:00
```

```
<ANTENNA>
t_ <ANTENNA>
t_ t_ <ANTENNA>
t_ t_ t_pwr_xyz=Z
t_ t_ t_pwr_ant=7
t_ t_ t_pwr_dbw=4.8
t_ < t_ t_pwr_eiv=E
t_ < t_ t_ant_dir=ND
t_ t_ <RX_STATION>
t_ t_ t_geo_type=CIRCLE
t_ t_ t_long=+0185956
t_ < t_ t_lat=+465959
t_ < < t_radius=300
t_ < < </RX_STATION>
t_ < </ANTENNA>
</NOTICE>
```

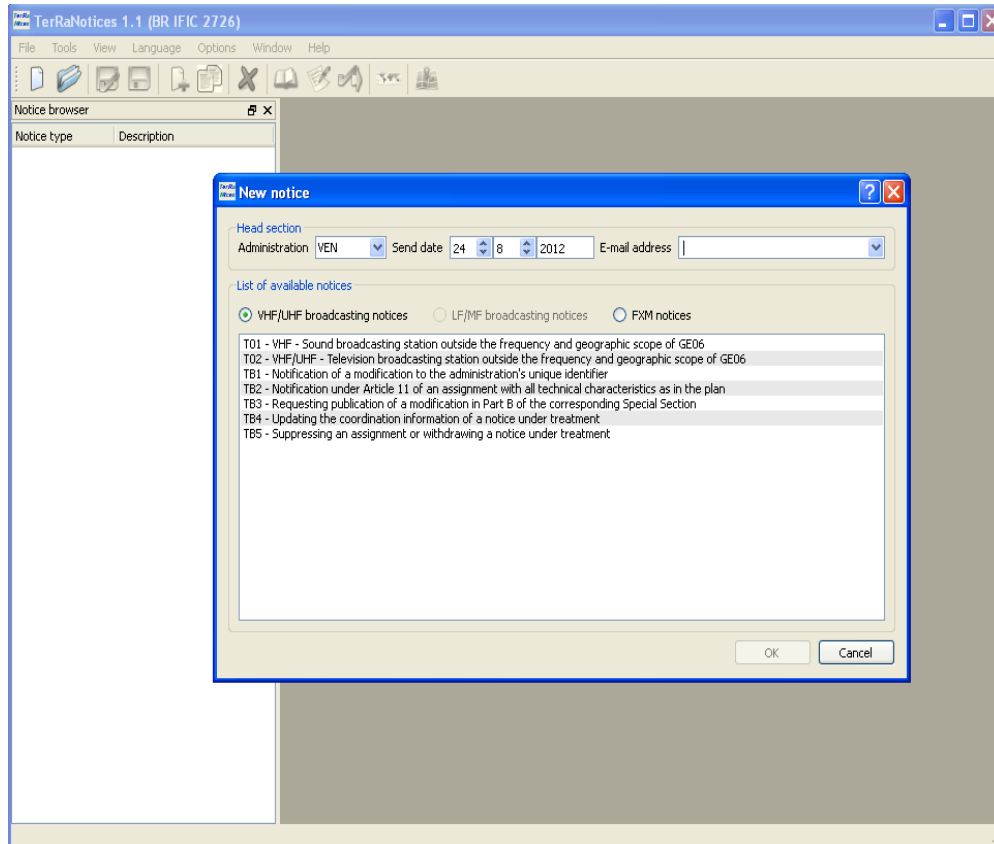
```
<TAIL>
t_num_notices=3
</TAIL>
```

- ❑ Notices must be sent electronically to the Bureau, to comply with Res. 906 (Rev. WRC-15):
- ❑ Structured text file in which more than one notice can be sent

<http://www.itu.int/en/ITU-R/terrestrial/tpr/Pages/Notification.aspx>

Additional information with examples of different notice types

Create a notice file : TerRaNotices



✓ eValidation tool:

- Deep validation such as checking the frequency band, geographical coordinates, potential duplicate notices, etc.
- Validation is done in batch mode so once the validation is completed the user is notified via an e-mail
- Available for all ITU Username having TIES Services at:

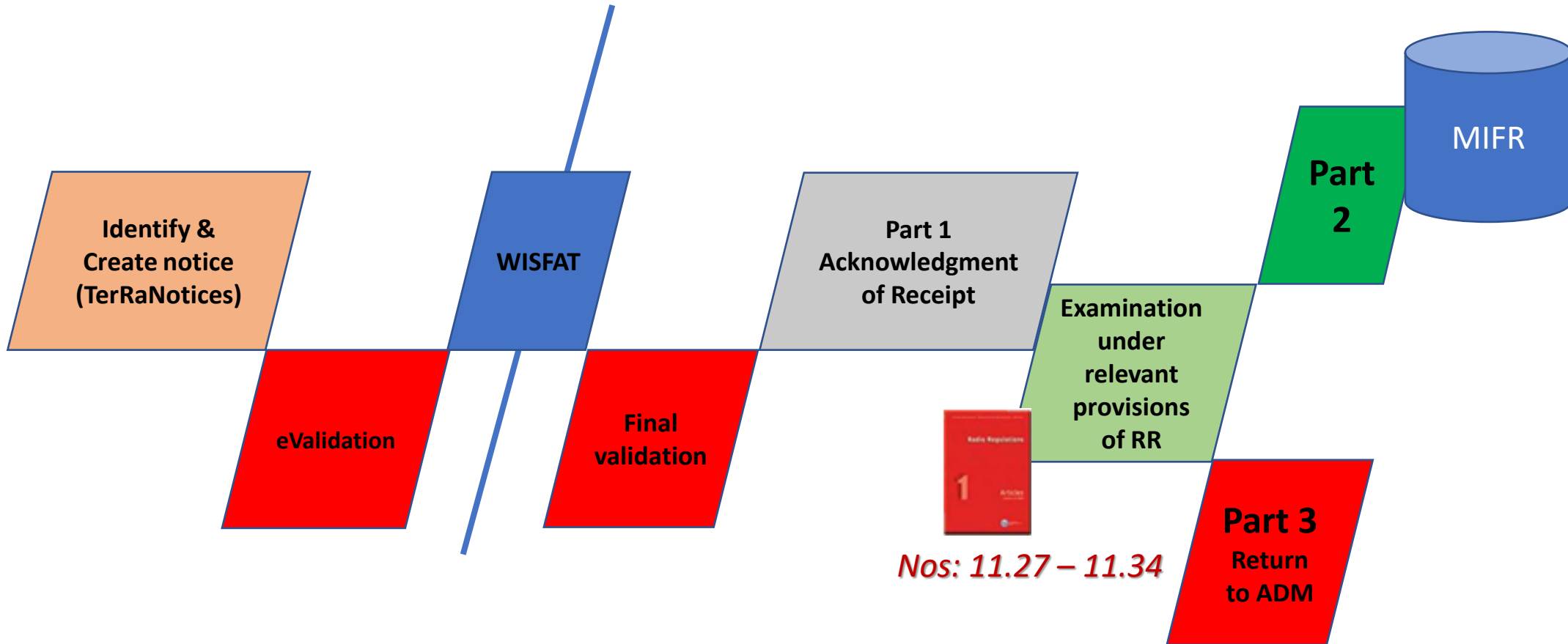
<https://www.itu.int/ITU-R/eTerrestrial/Account/Login>

Submission to the BR - WISFAT

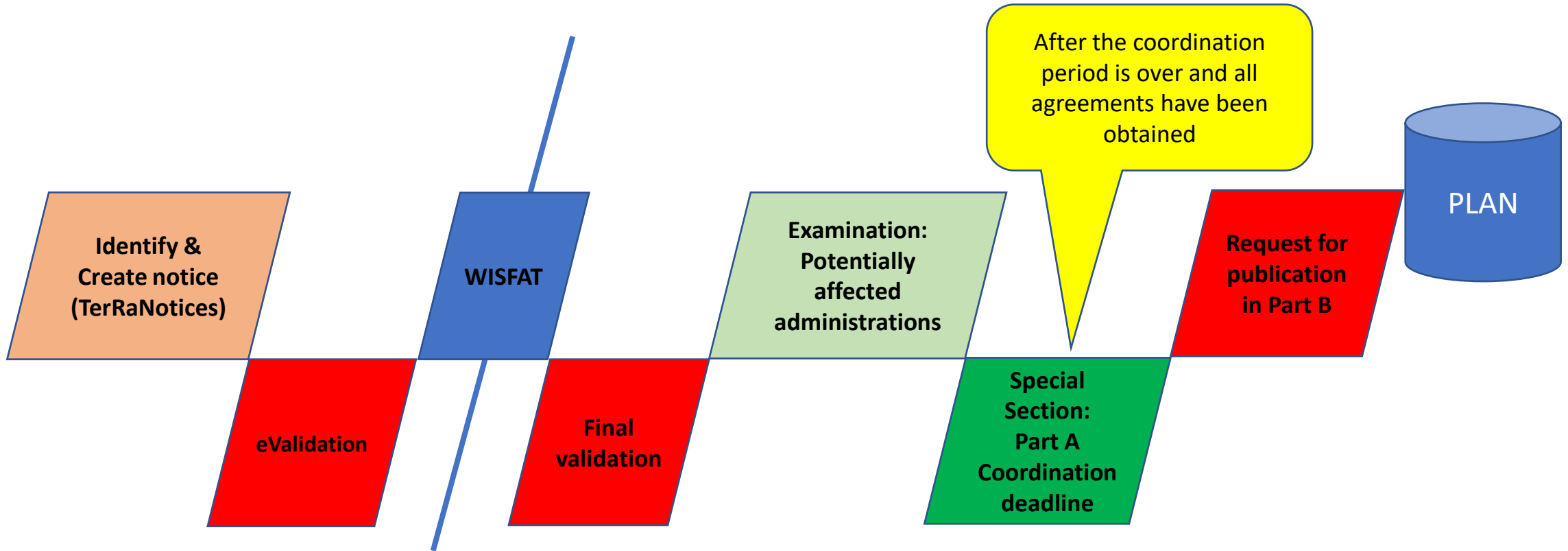
- How to submit the notices to the Bureau?
 - WISFAT (**W**eb **I**nterface for the **S**ubmission of **F**requency **A**ssignments/**A**llotments for the **T**errestrial Services)
 - Immediate acknowledgement report to the notifier;
 - Secured web Interface accessible only to registered users;
 - As many as required;
 - Administration's responsibility to keep the list of notifiers up to date;
- How to register?
 - Administrations must send an official request by e-mail (brmail@itu.int) to the BR giving:
 - Name, position, service e-mail, ITU Username (having TIES services);

<https://www.itu.int/net/ITU-R/submission/wisfat/Menu.aspx>

Overview of the Processing : Recording in the MIFR



Overview of the Processing : Plan modification



Final Remarks



➤ Notification has two aspects:

- ✓ Administration's obligation to apply the provisions of the Radio Regulations as it is an international treaty signed by all ITU Member States;
- ✓ To claim for international recognition.

□ Remember: **Master Register must reflect** the exact use of the radio spectrum;

➤ It also reflects the use of various frequency bands, this information is also taken into consideration during World Radiocommunication Conferences (WRCs), especially when services are looking for new allocations;

➤ Consult the BR IFIC to be aware of what is happening with regards to the use of the radio spectrum by your neighboring countries as well as to follow-up your submissions.

Therefore, **notification to the Bureau is very important**



30TH WORLD RADIOCOMMUNICATION SEMINAR

24 – 28 October 2022
Geneva, Switzerland

Thank you!

ITU – Radiocommunication Bureau

Questions to :
brtpr@itu.int

www.itu.int/go/wrs-22

#ITUWRS

