



30TH WORLD RADIOCOMMUNICATION SEMINAR

24 – 28 October 2022

Geneva, Switzerland

Use of Terrestrial BR IFIC software tools

(Workshop on Special query, Geographic files editor and DB Manager)

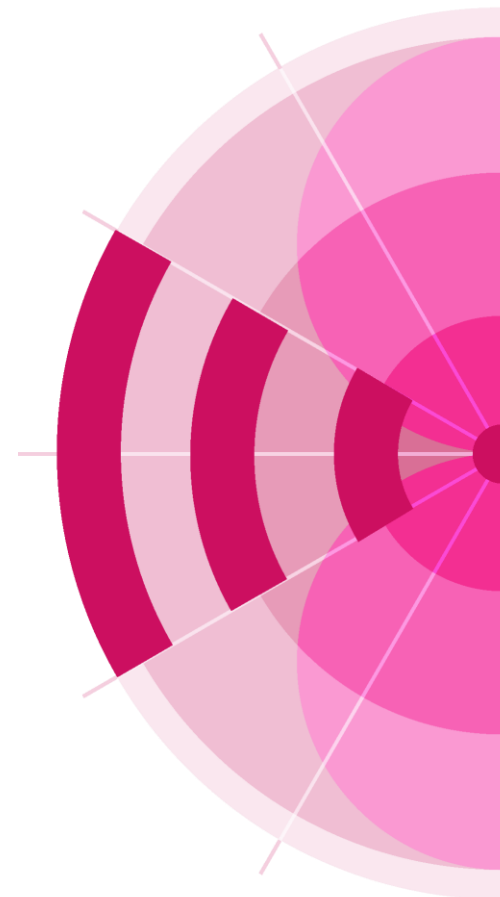
Terrestrial Services Department

Radiocommunication Bureau

International Telecommunication Union

www.itu.int/go/wrs-22

#ITUWRS



BR IFIC data consultation

National extract

Retrieve all the assignments recorded in the MIFR on behalf of your Administration using “Quick Query” option.

Pending notices

Retrieve all pending requests of modification of the GE06D Plan on behalf of your Administration and check their coordination requirements.

Search for a frequency assignment

Retrieve the frequency assignment of 594 MHz and geographical coordinates 34°40'00"E - 4°45'00"S using “General Purpose Query”.

Latest publication query

Retrieve all the frequency assignments of your Administration published by the Bureau in the latest BR IFIC.

- Indicate those published for acknowledgement of receipt
- Indicate those which are going to be recorded in the Master Register.
- Indicate those for which the Bureau has formulated an unfavourable finding.

Notification to the BR for registration in the Master Register during year 2021

Retrieve all the assignments notified by your Administration, for registration in the **Master Register**, during 2021.

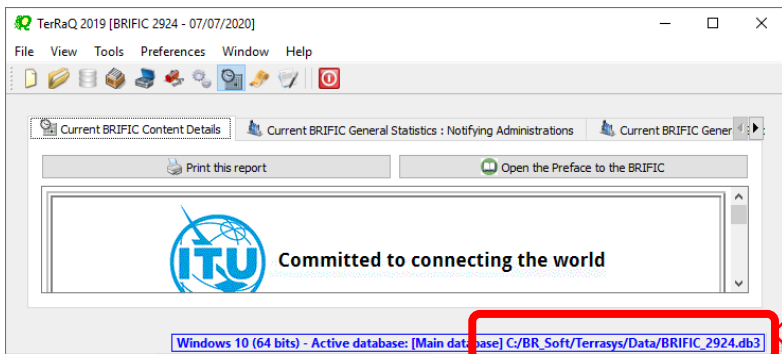
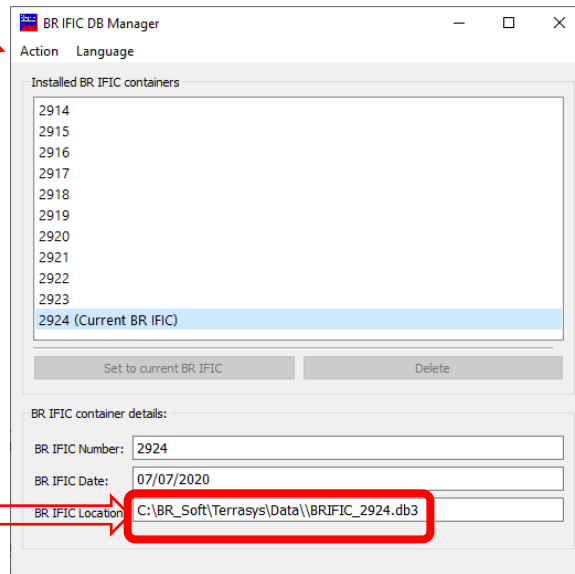
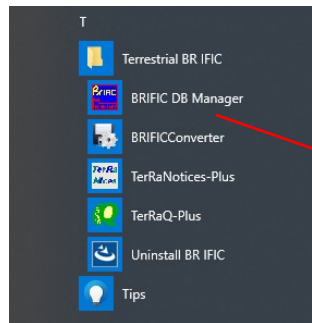
BR IFIC history check

Retrieve all BR IFICs published in 2021 containing notifications submitted by your Administration.

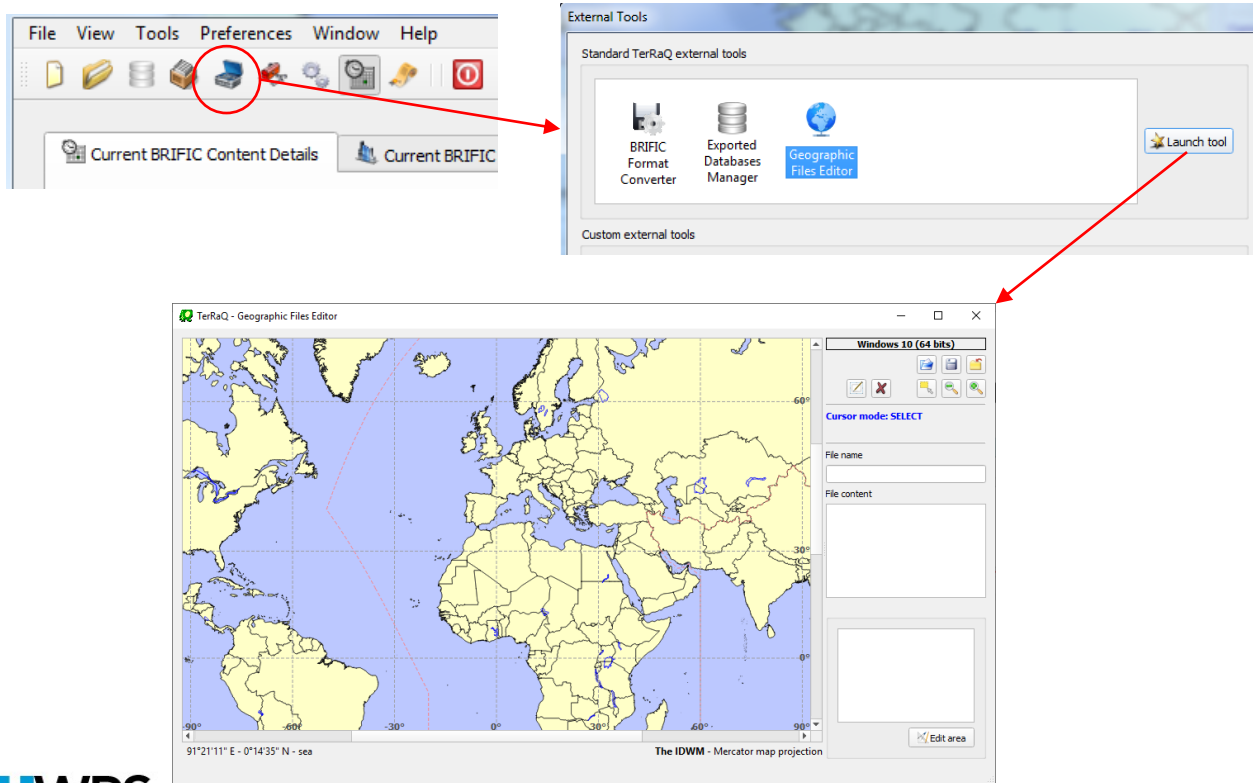
Update Tables 12A/12B of the Preface to the BR IFIC

Check Tables 12A/12B of the Preface to the BR IFIC (Address Codes and Operating Agencies)
Should there be any changes, communicate them to the Bureau (BRMail@itu.int).

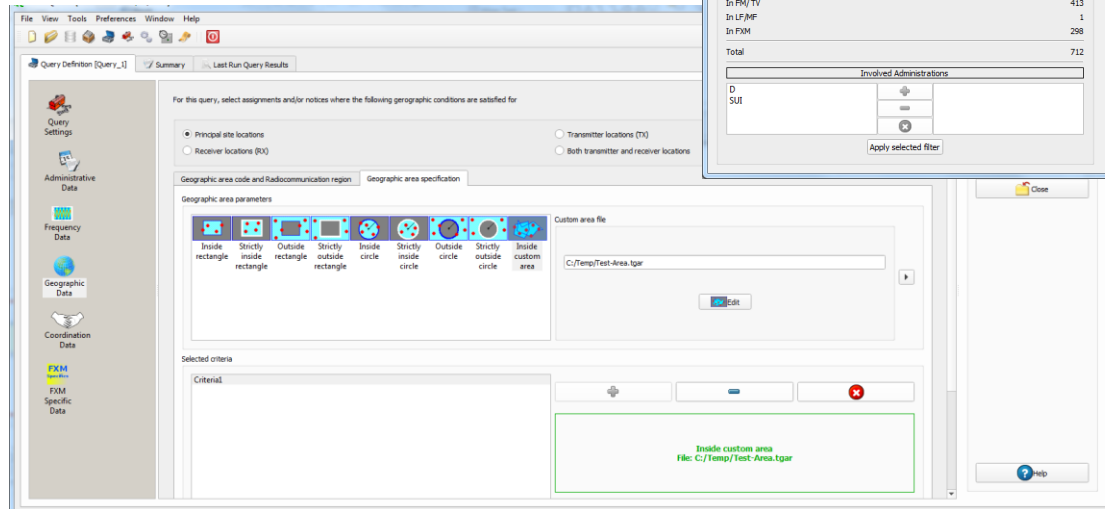
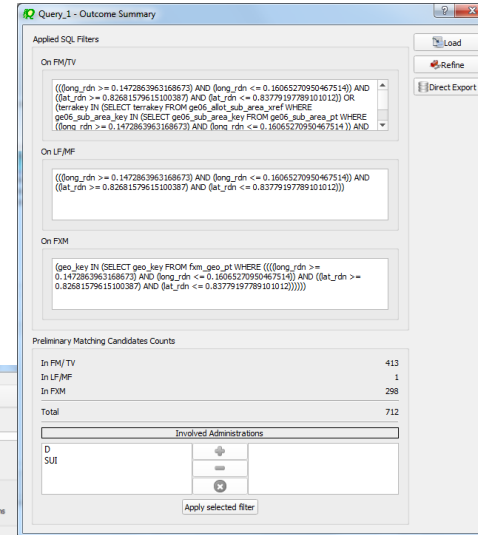
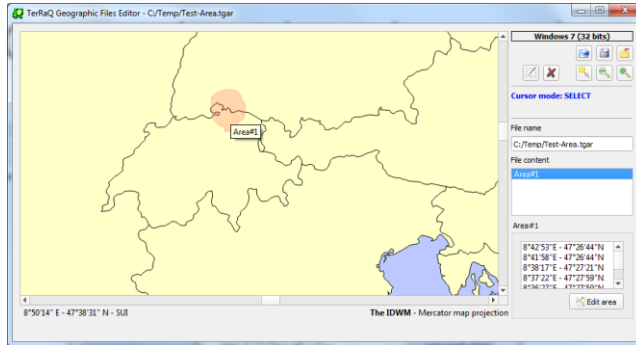
DB Manager tool



Geographic Files Editor tool



Geographic Files Editor tool (continued)



Special query

Frequency Bands Overlap

Fragment(s) BR Assigned to(s) Administration(s) Station Information Notice Information Receipt Date(s)

For this query, select assignments and / or notices notified by the following Administrations

Available Administrations: AFG, AFS, AGL, ALB, ALG, AND, ARG, ARM, ARS, ATG, AUS, AUT, AZE

Selected Administrations: SUT

Assigned Frequency Frequency Bands Overlap

In this query, select assignments and/or notices where the assigned frequency (f) satisfies the following frequency conditions

Active criterion

2000 MHz 2800 MHz

Active criterion
2 000 MHz <= f <= 2 800 MHz

Assigned Frequency Frequency Bands Overlap

For this query, select assignments and/or notices whose frequency bands

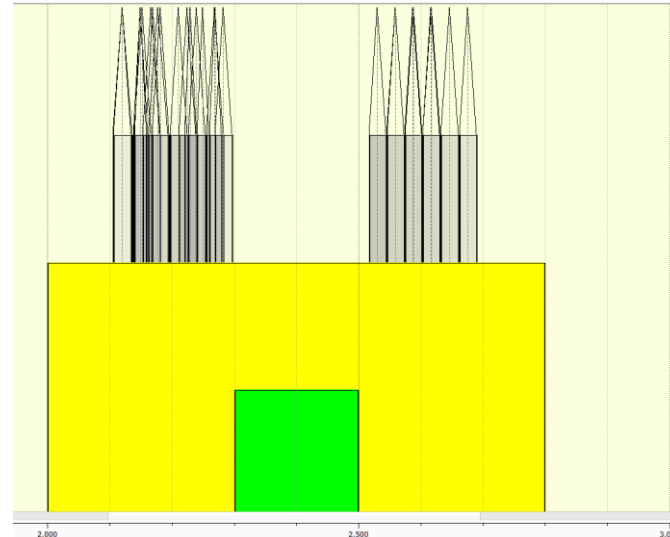
Overlap with Don't overlap with

Band type

Low frequency: 2300 MHz

High frequency: 2500 MHz

2 300 MHz <= f <= 2 500 MHz



Special query (continued)

SQL Query:

Example:

`select count(*) from fmtv_terra where fragment="NTFD_RR" and intent="RECORDED"`

The screenshot shows the TerRaBase website interface. On the left, a navigation menu has a red box around the 'TerRaBase' link, with a red arrow pointing to the browser window. The browser window displays the 'The FXM Domain' page, which includes a data model diagram for the FXM Entity/Relationship Data Model (March 2011). The diagram shows several tables and their relationships:

- fmtv_history**: PK: history_id, INT: history_date, FK: history_id, INT: history_date, FK: history_id, INT: history_date.
- fmtv_status**: PK: status_id, INT: status_date, FK: status_id, INT: status_date, FK: status_id, INT: status_date.
- fmtv_terra**: PK: terra_id, INT: terra_date, FK: terra_id, INT: terra_date, FK: terra_id, INT: terra_date.
- fmtv_frag**: PK: frag_id, INT: frag_date, FK: frag_id, INT: frag_date, FK: frag_id, INT: frag_date.
- fmtv_intent**: PK: intent_id, INT: intent_date, FK: intent_id, INT: intent_date, FK: intent_id, INT: intent_date.
- fmtv_reg**: PK: reg_id, INT: reg_date, FK: reg_id, INT: reg_date, FK: reg_id, INT: reg_date.
- fmtv_reg_int**: PK: reg_int_id, INT: reg_int_date, FK: reg_int_id, INT: reg_int_date, FK: reg_int_id, INT: reg_int_date.
- fmtv_reg_int_status**: PK: reg_int_status_id, INT: reg_int_status_date, FK: reg_int_status_id, INT: reg_int_status_date, FK: reg_int_status_id, INT: reg_int_status_date.



Open MDB extracts

BR IFIC (Terrestrial Services)

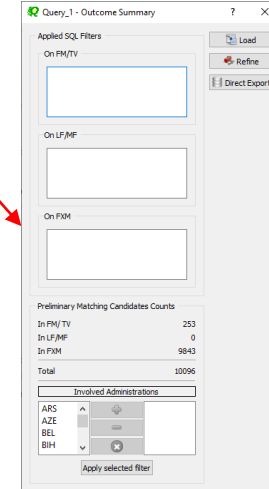
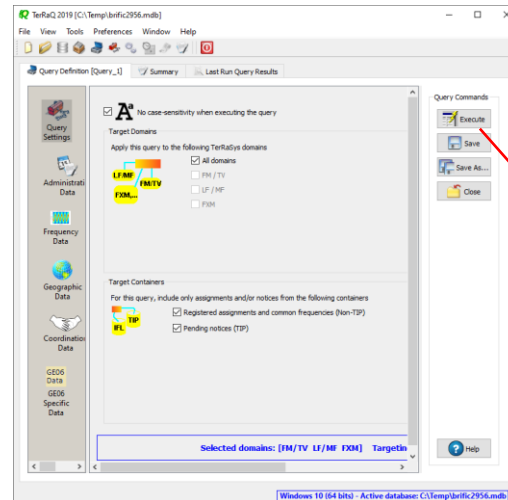
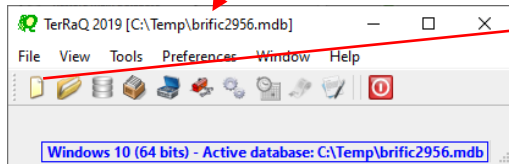
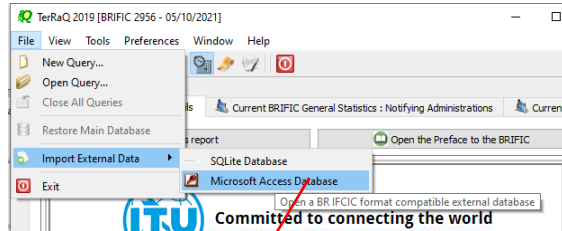
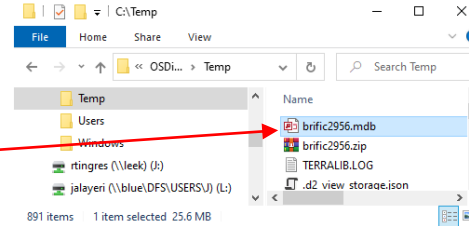
https://www.itu.int/en/ITU-R/terrestria...

the Preface to the BR IFIC (Preface, Preface, Предисловие, Prefacio).

BR IFIC Publications

No.	Date	Article 11 of RR	App.25	GE75	GE84	GE85M	GE85N	GE89	GE06	GE08L	RJ81	RR.9.21/C	RR.9.21/D	ST61	MDB Extract	Note
2956	05/10/2021	Parts 1/2/3							184	70			445		IFIC2956	ReadMe
2955	21/09/2021	Parts 1/2/3			305				69			1002	444	1508	IFIC2955	ReadMe
2954	07/09/2021	Parts 1/2/3							183						IFIC2954	ReadMe
2953	24/08/2021	Parts 1/2/3			304				68			1001			IFIC2953	ReadMe
2952	10/08/2021	Parts 1/2/3			194				182	67		1000	443		IFIC2952	ReadMe
									66			999			IFIC2951	ReadMe

https://www.itu.int/en/ITU-R/terrestrial/brific/BRIFIC/MDB/brific2956.zip



Update Tables 12A/12B of the Preface to the BR IFIC

The screenshot displays the ITU software interface with the following elements:

- Buttons:** "Print this report" and "Open the Preface to the BRIFIC" (highlighted with a red box).
- Browser:** Displays the URL http://www.itu.int/ITU-R/terrestrial/docs/brific/files/preface/PREFACE_EN.pdf.
- Table of Contents:** A sidebar on the left lists sections, with "Section 3 - Address codes and operating agencies" highlighted by a red arrow.
- Main Content:** Displays the title "Address Codes and Operating Agencies" in three languages (English, French, and Spanish) and two tables of data.

Table 12A:

Symbol	Geographical Area	12B Code	Address of the Administration(s)
ABW	Aruba	A	MINISTRY OF ECONOMIC AFFAIRS, AGRICULTURE AND INNOVATION, RADIO COMMUNICATIONS AGENCY
	Aruba		P.O. BOX 450, 9700 AL, GRONINGEN
		TELEFAX	+31 50 58 77 400
		E-MAIL	info@agentschaptelecom.nl
		PHONE	+31 50 58 77 555
		B	DIRECTIE TELECOMMUNICATIE ZAKEN
			RUMBASTRAAT 19
			ORANJESTAD
		E-MAIL	dinfelca@setamet.aw
		PHONE	+297 582 6069
		TELEFAX	+297 582 5307

Table 12B:

Symbol	Geographical Area	12B Code	Address of the Administration(s)
AFG	Afghanistan	A	MINISTRY OF COMMUNICATIONS
	Afghanistan		LIAISON AND DOCUMENTS DEPARTMENT
			INTERNATIONAL ORGANIZATIONS LIAISON SECTION
			KABUL
			ISLAMIC STATE OF AFGHANISTAN
			TELEFAX +4940 2295 347

Table 12C:

12A Code	Operating Agencies
001	MINISTRY OF COMMUNICATIONS
002	MINISTRY OF CIVIL AVIATION
003	AFGHAN AIR AUTHORITY
004	EMBASSY OF THE REPUBLIC OF TURKEY

Thank you

ITU – Radiocommunication Bureau

Questions to brmail@itu.int or brtpr@itu.int

