



INTERNATIONAL TELECOMMUNICATION UNION

ITU-T

TELECOMMUNICATION
STANDARDIZATION SECTOR
OF ITU

Q.684

INTERWORKING OF SIGNALLING SYSTEMS

LOGIC PROCEDURES FOR INTERWORKING OF SIGNALLING SYSTEM R2 TO No. 7 (TUP)

ITU-T Recommendation Q.684

(Extract from the *Blue Book*)

NOTES

1 ITU-T Recommendation Q.684 was published in Fascicle VI.6 of the *Blue Book*. This file is an extract from the *Blue Book*. While the presentation and layout of the text might be slightly different from the *Blue Book* version, the contents of the file are identical to the *Blue Book* version and copyright conditions remain unchanged (see below).

2 In this Recommendation, the expression “Administration” is used for conciseness to indicate both a telecommunication administration and a recognized operating agency.

LOGIC PROCEDURES FOR INTERWORKING OF SIGNALLING SYSTEM R2 TO No. 7 (TUP)

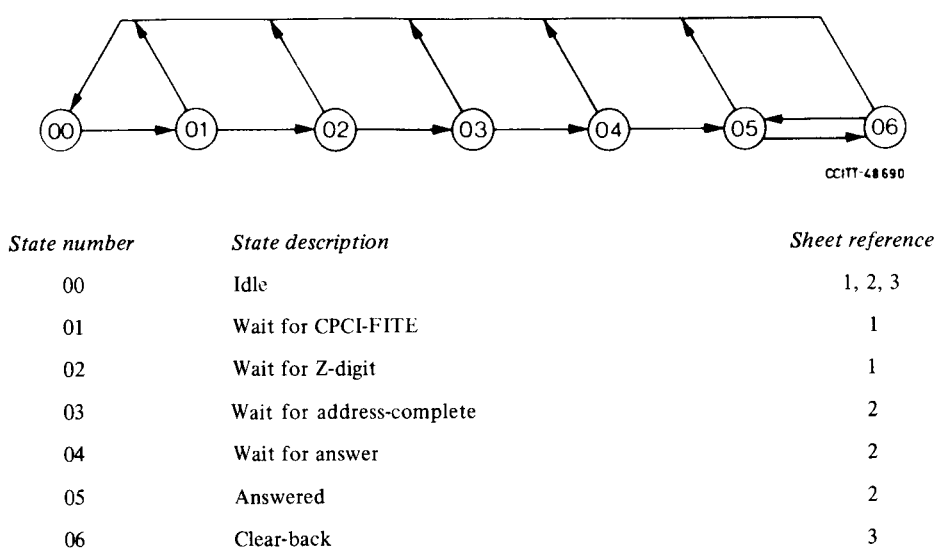
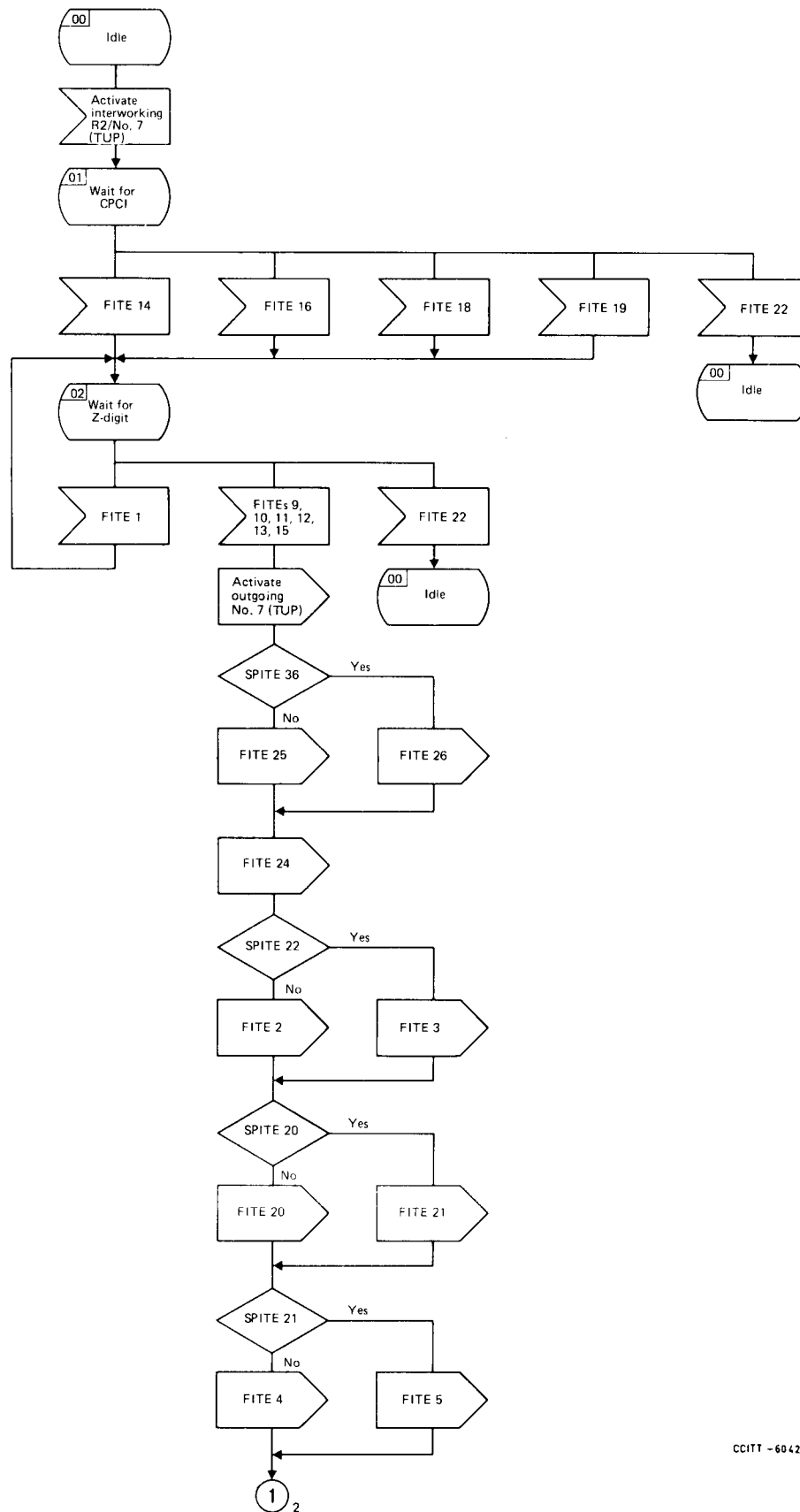


FIGURE 1/Q.684

State overview diagram for interworking of Signalling System R2 to No. 7 (TUP)

FIGURE 2/Q.684

(Reserved for future notes)



CCITT - 60421

FIGURE 3/Q.684 (Sheet 1 of 3)
Interworking of Signalling System R2 to No. 7 (TUP)



Fascicle VI.6 - Rec. Q.684

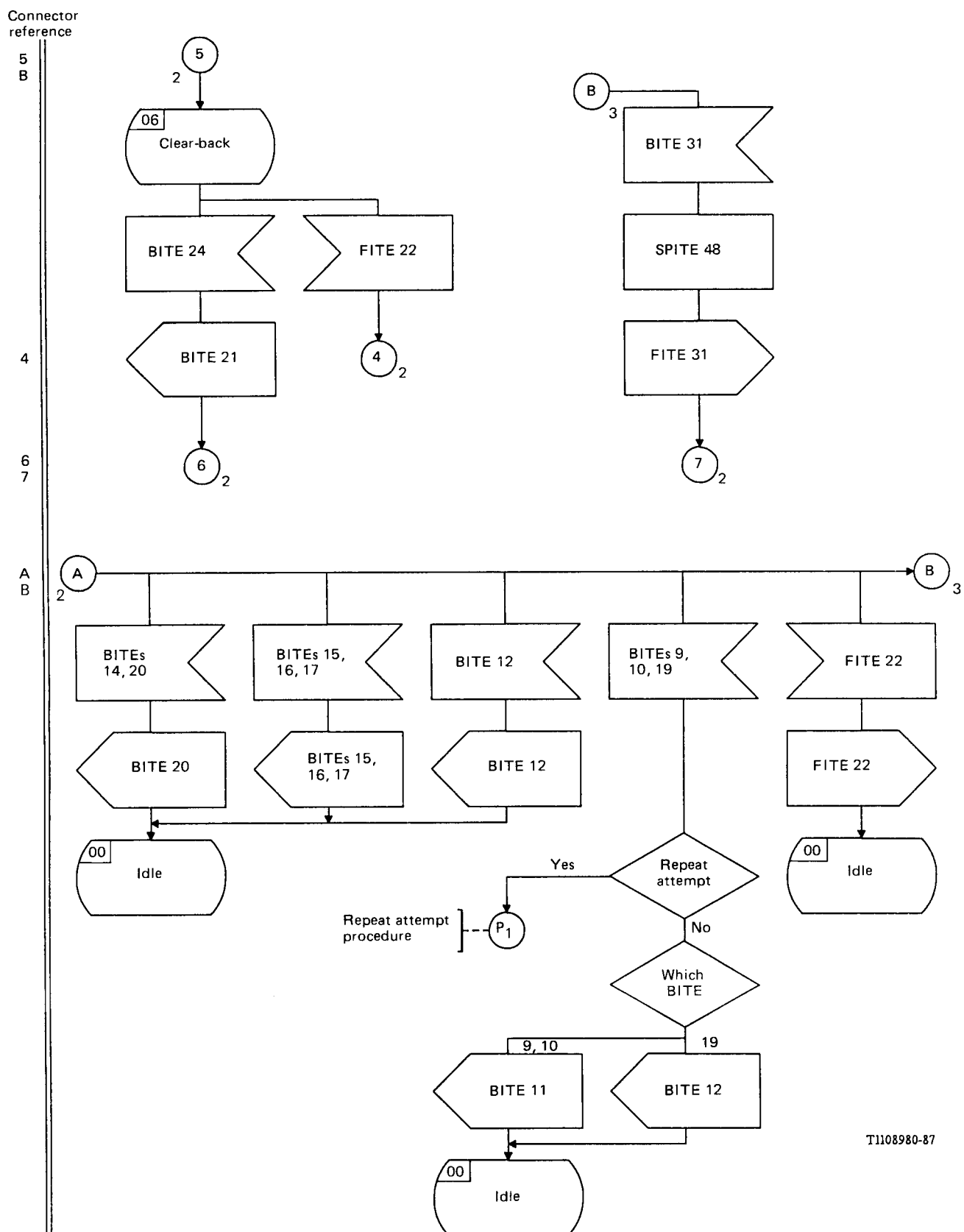


FIGURE 3/Q.684 (Sheet 3 of 3)
Interworking of Signalling System R2 to No. 7 (TUP)