



INTERNATIONAL TELECOMMUNICATION UNION

ITU-T

TELECOMMUNICATION
STANDARDIZATION SECTOR
OF ITU

Q.666

INTERWORKING OF SIGNALLING SYSTEMS

LOGIC PROCEDURES FOR INTERWORKING OF SIGNALLING SYSTEM No. 7 (TUP) TO R2

ITU-T Recommendation Q.666

(Extract from the *Blue Book*)

NOTES

1 ITU-T Recommendation Q.666 was published in Fascicle VI.6 of the *Blue Book*. This file is an extract from the *Blue Book*. While the presentation and layout of the text might be slightly different from the *Blue Book* version, the contents of the file are identical to the *Blue Book* version and copyright conditions remain unchanged (see below).

2 In this Recommendation, the expression “Administration” is used for conciseness to indicate both a telecommunication administration and a recognized operating agency.

LOGIC PROCEDURES FOR INTERWORKING OF SIGNALLING SYSTEM No. 7 (TUP) TO R2

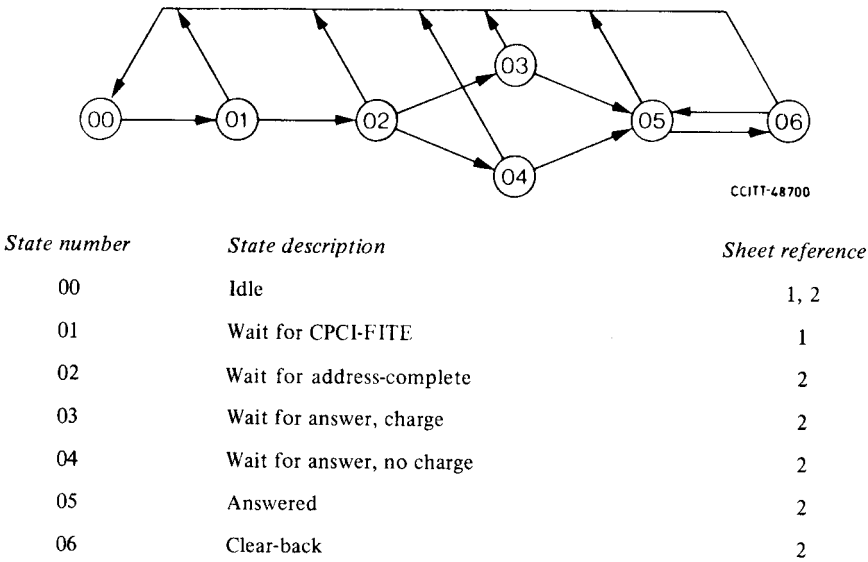


FIGURE 1/Q.666

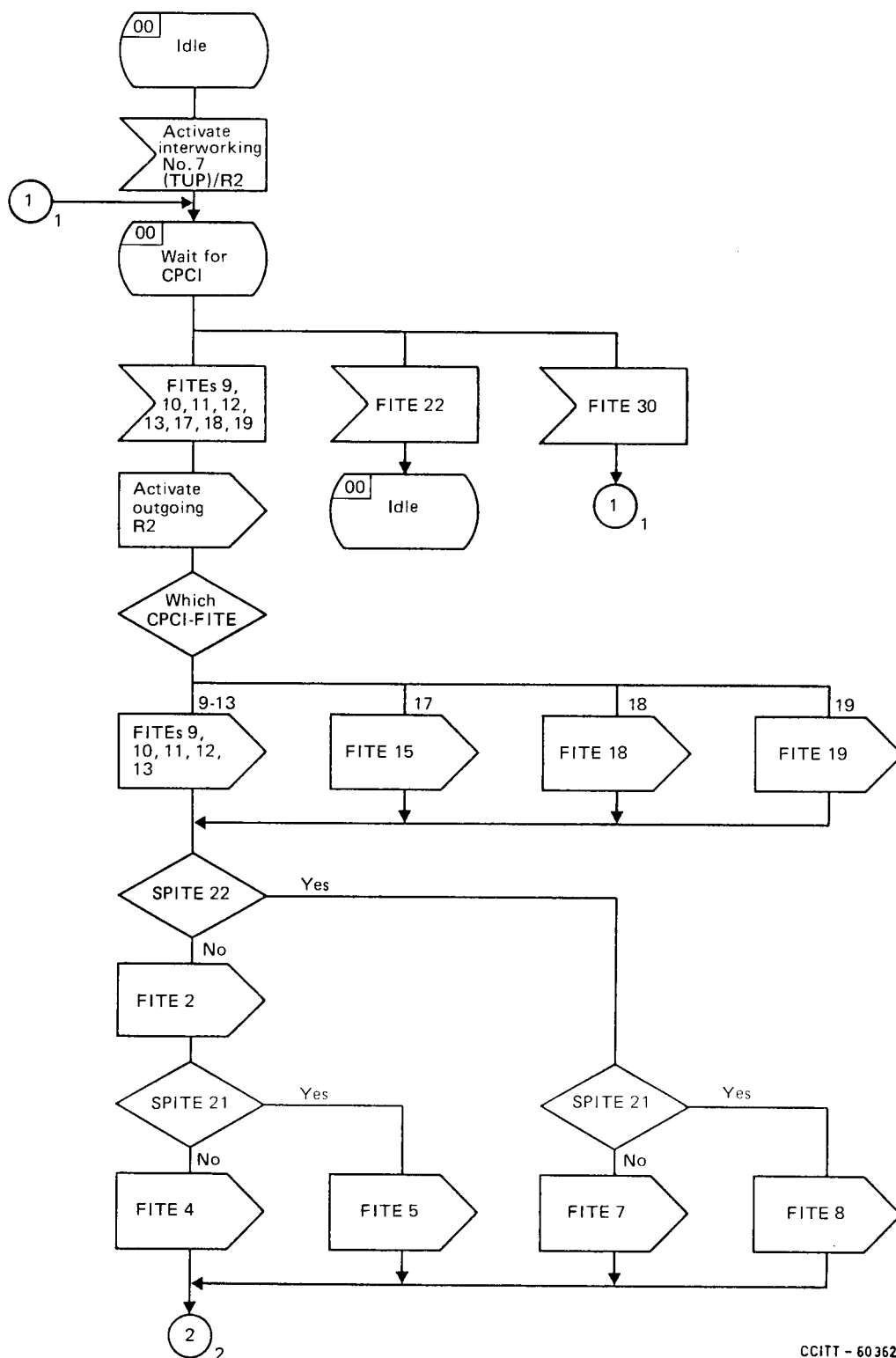
State overview diagram for interworking of Signalling System No. 7 (TUP) to R2

FIGURE 2/Q.666
(Reserved for future use)

1

1

2



CCITT - 60362

FIGURE 3/Q.666 (Sheet 1 of 2)

Interworking of Signalling System No. 7 (TUP) to R2

