



INTERNATIONAL TELECOMMUNICATION UNION

ITU-T

TELECOMMUNICATION
STANDARDIZATION SECTOR
OF ITU

Q.655

INTERWORKING OF SIGNALLING SYSTEMS

LOGIC PROCEDURES FOR INTERWORKING OF SIGNALLING SYSTEM No. 6 TO R2

ITU-T Recommendation Q.655

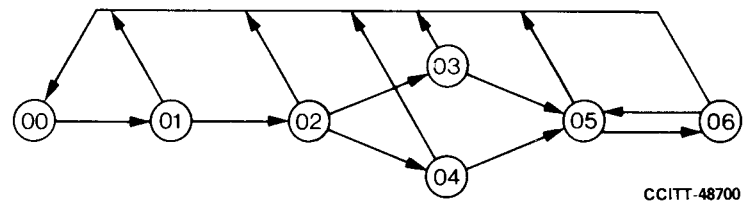
(Extract from the *Blue Book*)

NOTES

1 ITU-T Recommendation Q.655 was published in Fascicle VI.6 of the *Blue Book*. This file is an extract from the *Blue Book*. While the presentation and layout of the text might be slightly different from the *Blue Book* version, the contents of the file are identical to the *Blue Book* version and copyright conditions remain unchanged (see below).

2 In this Recommendation, the expression “Administration” is used for conciseness to indicate both a telecommunication administration and a recognized operating agency.

LOGIC PROCEDURES FOR INTERWORKING OF SIGNALLING SYSTEM No. 6 TO R2



State number	State description	Sheet reference
00	Idle	1, 2
01	Wait for calling party's category (CPCI)	1
02	Wait for address-complete	1
03	Wait for answer, charge	2
04	Wait for answer, no charge	2
05	Answered	2
06	Clear-back	2

FIGURE 1/Q.655
State overview diagram for interworking of Signalling System No. 6 to R2

Procedures not shown

The following procedure, not directly relevant to interworking, is not shown in the logic:

P₁ - Procedure for repeat attempt.

FIGURE 2/Q.655
Notes to interworking of Signalling System No. 6 to R2

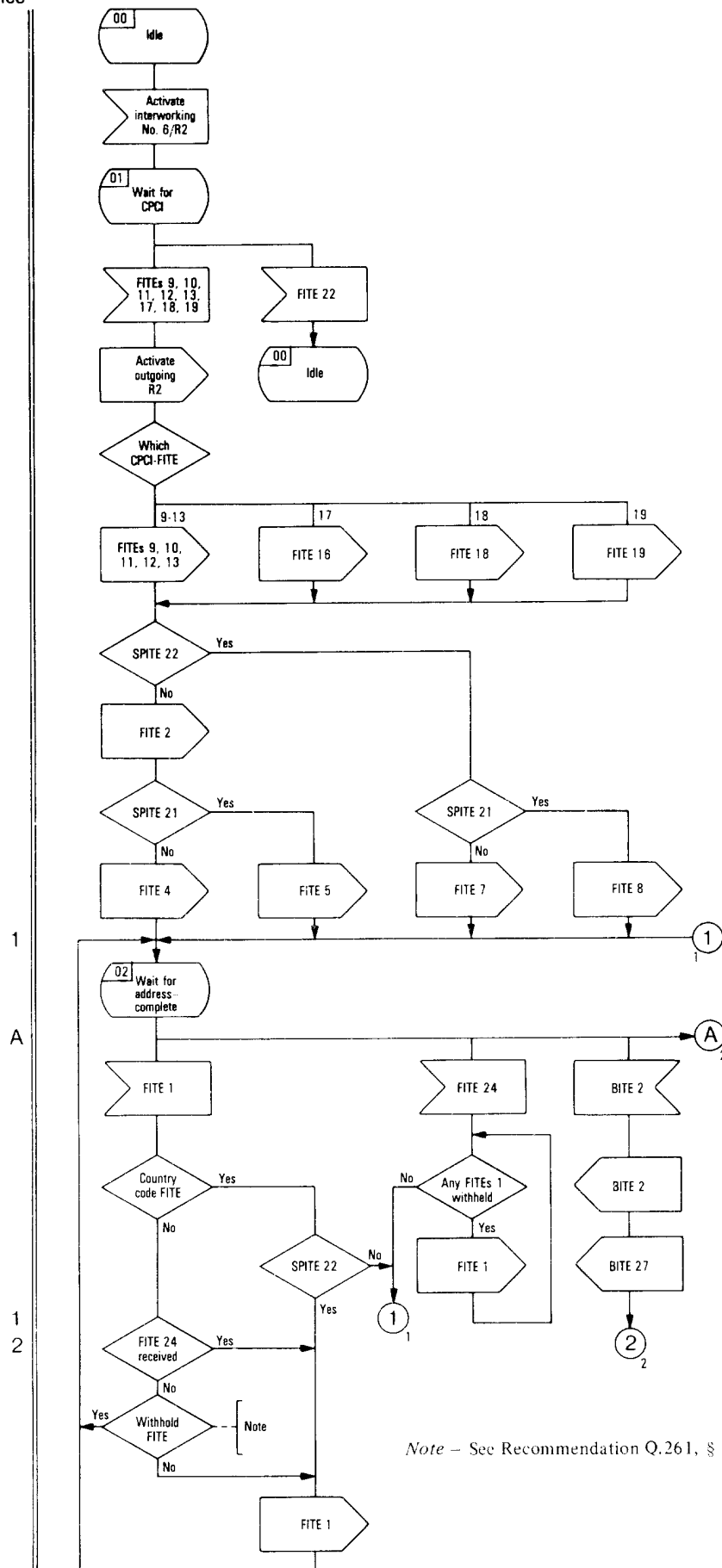


FIGURE 3/Q.655 (Sheet 1 of 2)

Interworking of Signalling System No. 6 to R2

Connector
reference

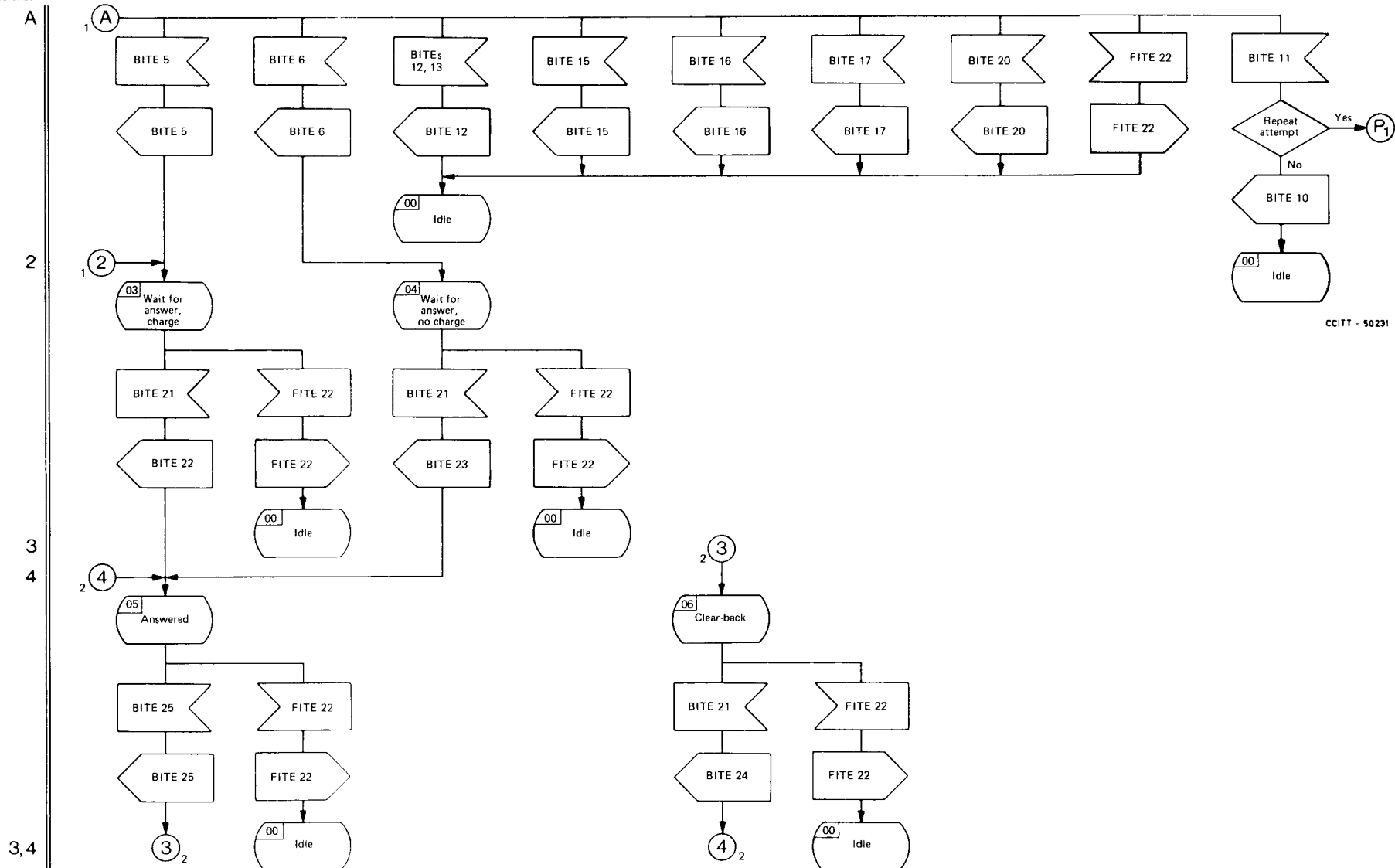


FIGURE 3/Q.655 (Sheet 2 of 2)

Interworking of Signalling System No. 6 to R2