



INTERNATIONAL TELECOMMUNICATION UNION

ITU-T

TELECOMMUNICATION
STANDARDIZATION SECTOR
OF ITU

Q.623

INTERWORKING OF SIGNALLING SYSTEMS

**LOGIC PROCEDURES FOR OUTGOING
SIGNALLING SYSTEM No. 6**

ITU-T Recommendation Q.623

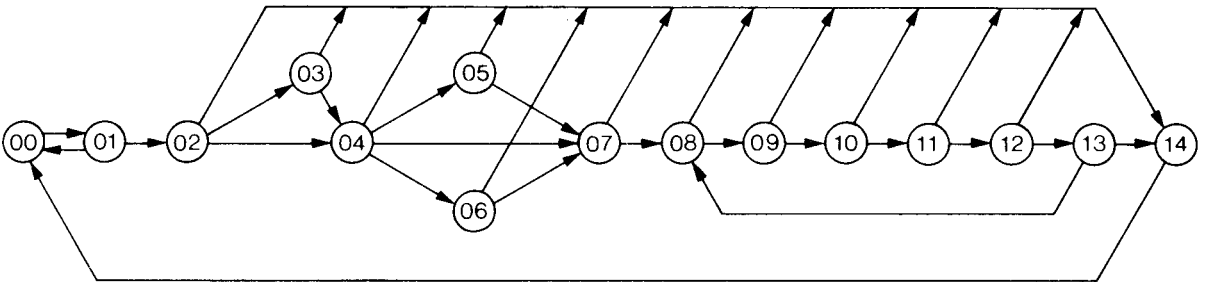
(Extract from the *Blue Book*)

NOTES

- 1 ITU-T Recommendation Q.623 was published in Fascicle VI.6 of the *Blue Book*. This file is an extract from the *Blue Book*. While the presentation and layout of the text might be slightly different from the *Blue Book* version, the contents of the file are identical to the *Blue Book* version and copyright conditions remain unchanged (see below).
- 2 In this Recommendation, the expression “Administration” is used for conciseness to indicate both a telecommunication administration and a recognized operating agency.

Recommendation Q.623

LOGIC PROCEDURES FOR OUTGOING SIGNALLING SYSTEM No. 6



CCITT-48610

State number	State description	Sheet reference	Timers running
00	Idle	1, 5	
01	Wait for FITEs OF IAM	1	
02	Wait for continuity check	2	t_1, t_2
03	Wait for continuity indicator	2	t_2
04	Wait for address-complete	3	t_2
05	Wait for answer	3	
06	Wait for answer (subscriber free)	4	
07	Answered	4	
08	Clear-back 1	4	
09	Reanswer 1	4	
10	Clear-back 2	4	
11	Reanswer 2	5	
12	Clear-back 3	5	
13	Reanswer 3	5	
14	Wait for release-guard	5	t_3, t_4

FIGURE 1/Q.623
State overview diagram for outgoing Signalling System No. 6

Supervisory timers for outgoing Signalling System No. 6

- $t_1 = 2s$ Recommendation Q.271, § 5.7.1
- $t_2 = 20-30s$ Recommendation Q.268, § 4.8.5.1, a)
- $t_3 = 4-15s$ Recommendation Q.268, § 4.8.2.3
- $t_4 = 1 \text{ min.}$ Recommendation Q.268, § 4.8.2.3, a)

Procedures not shown

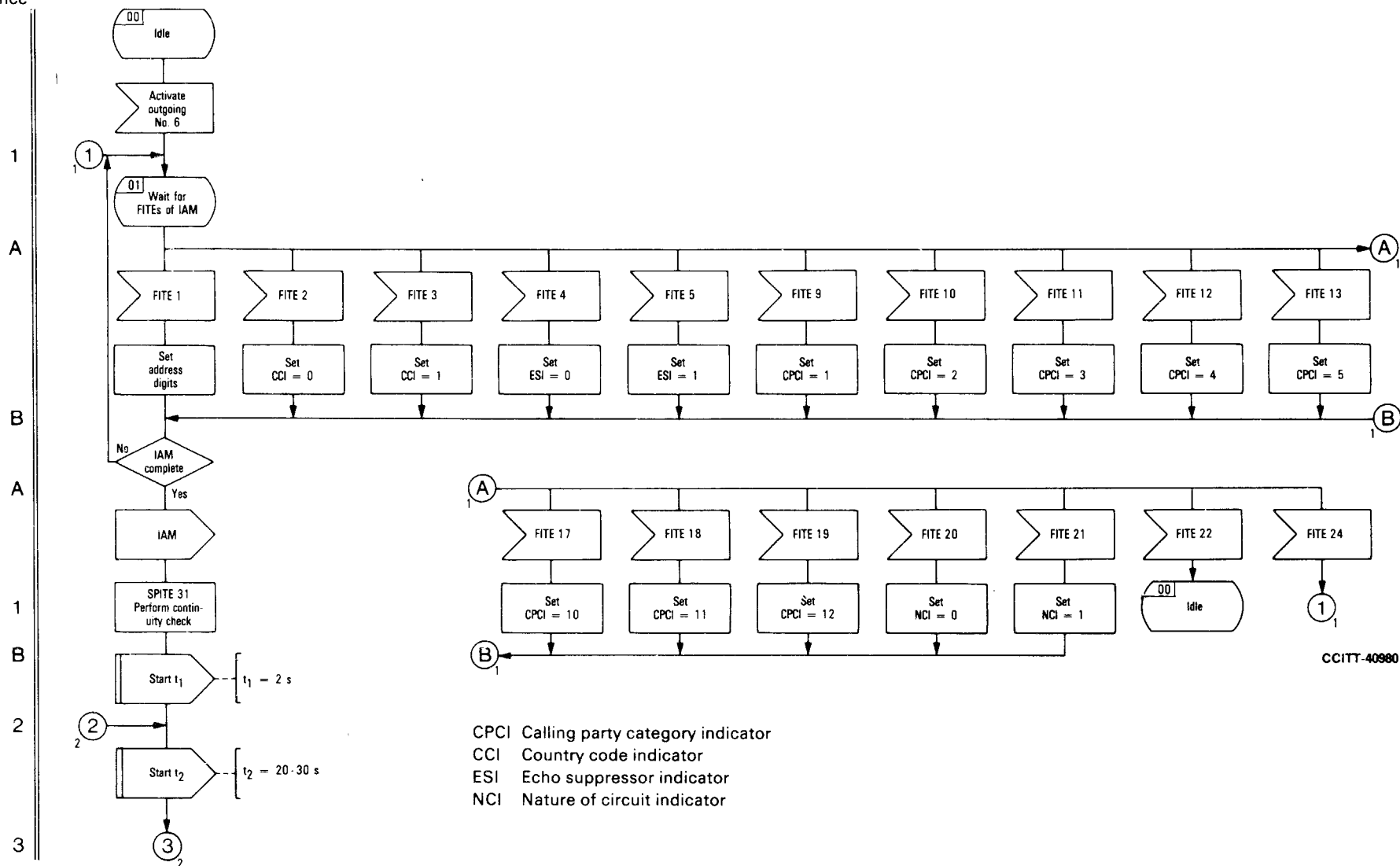
The following procedures, not directly relevant to interworking, are not shown in the logic procedures:

- Dual seizure.
- Blocking and unblocking sequences.
- Unreasonable sequences.
- Confusion and message refusal signals.
- Reset circuit/band procedures.
- Test call procedures.
- Out of service.

Signal abbreviations used

The signal abbreviations used correspond to those of the Signalling System No. 6 specifications unless otherwise indicated on the same sheet.

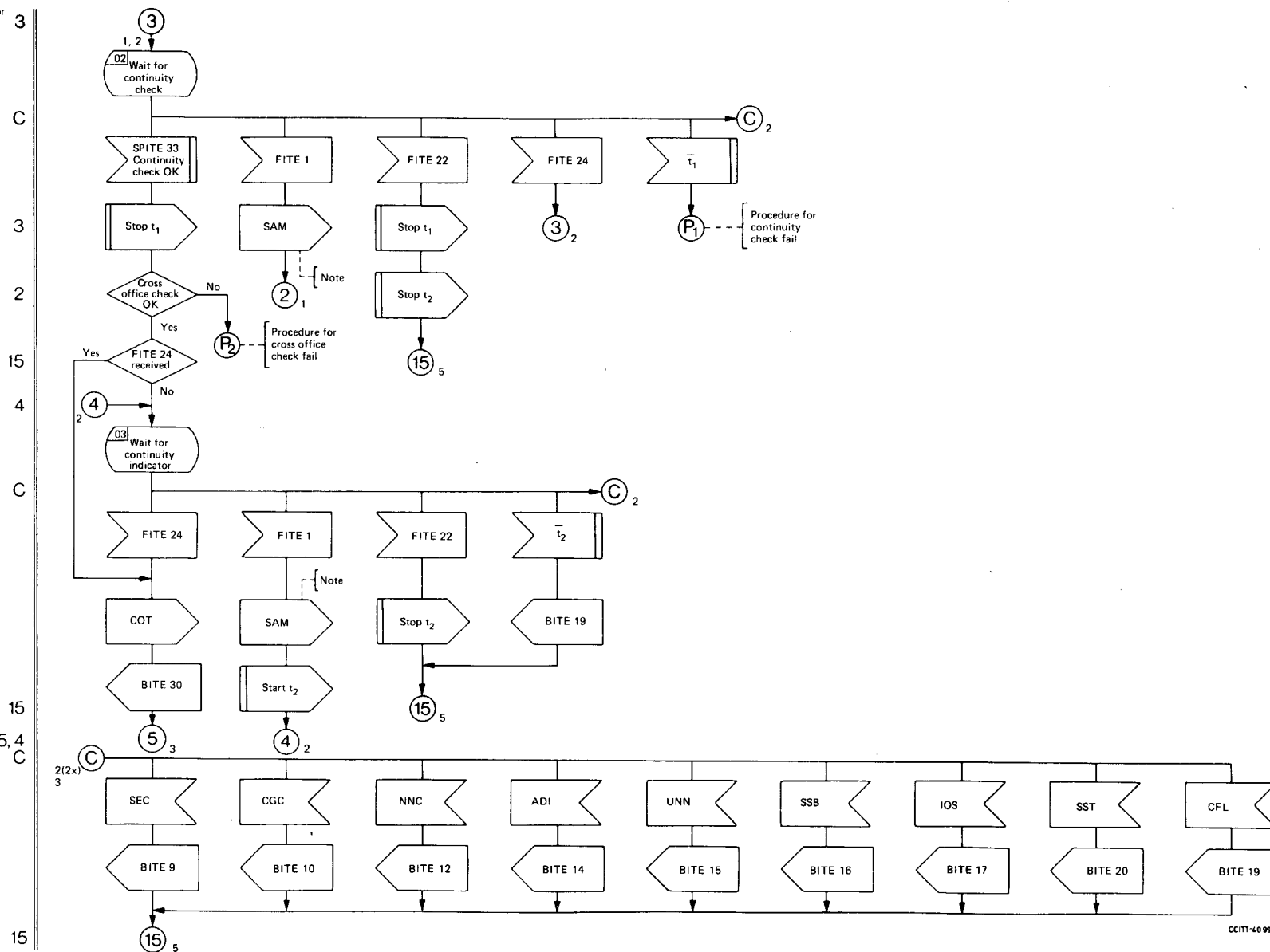
FIGURE 2/Q.623
Notes to outgoing Signalling System No. 6

Connector
reference

CCITT-40980

FIGURE 3/Q.623 (Sheet 1 of 5)
Outgoing Signalling System No. 6

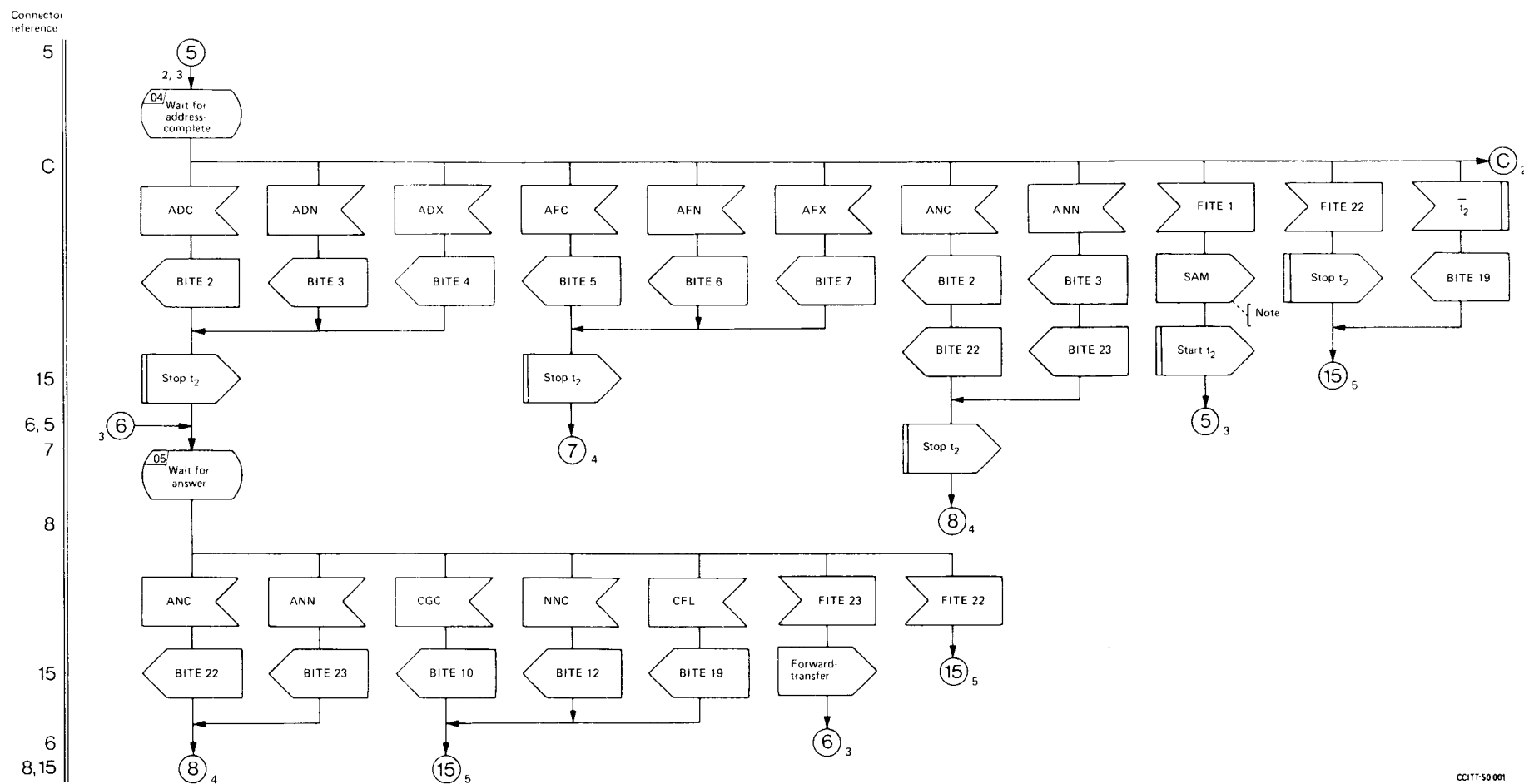
Connector
reference



Note — Digits should be forwarded to the outgoing link as soon as they are available. Multi digit SAMs should only be sent if more than one address digit is waiting.

FIGURE 3/Q.623 (Sheet 2 of 5)

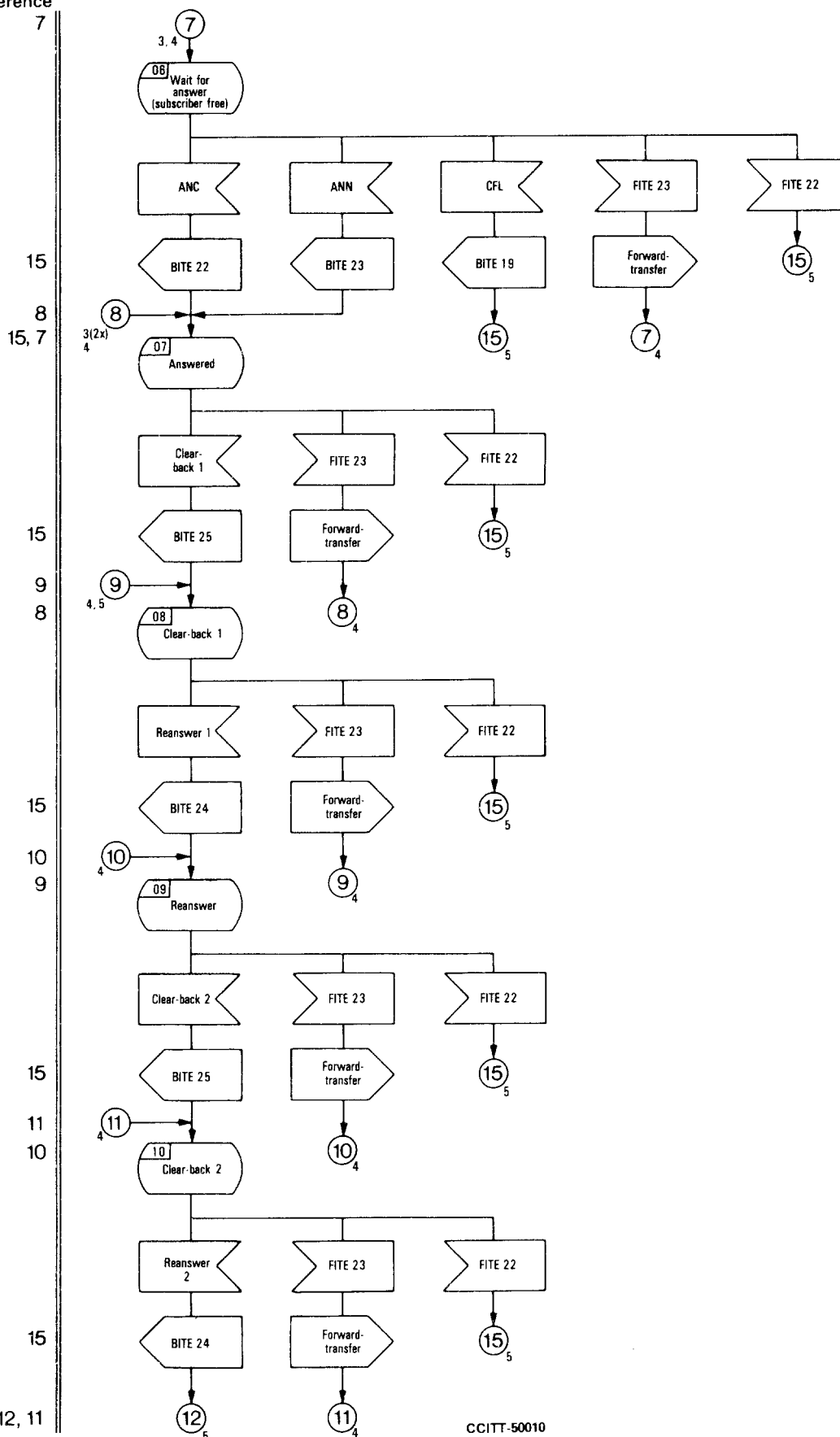
Outgoing Signalling System No. 6



Note — Digits should be forwarded to the outgoing link as soon as they are available. Multi digit SAMs should only be sent if more than one address digit is in waiting.

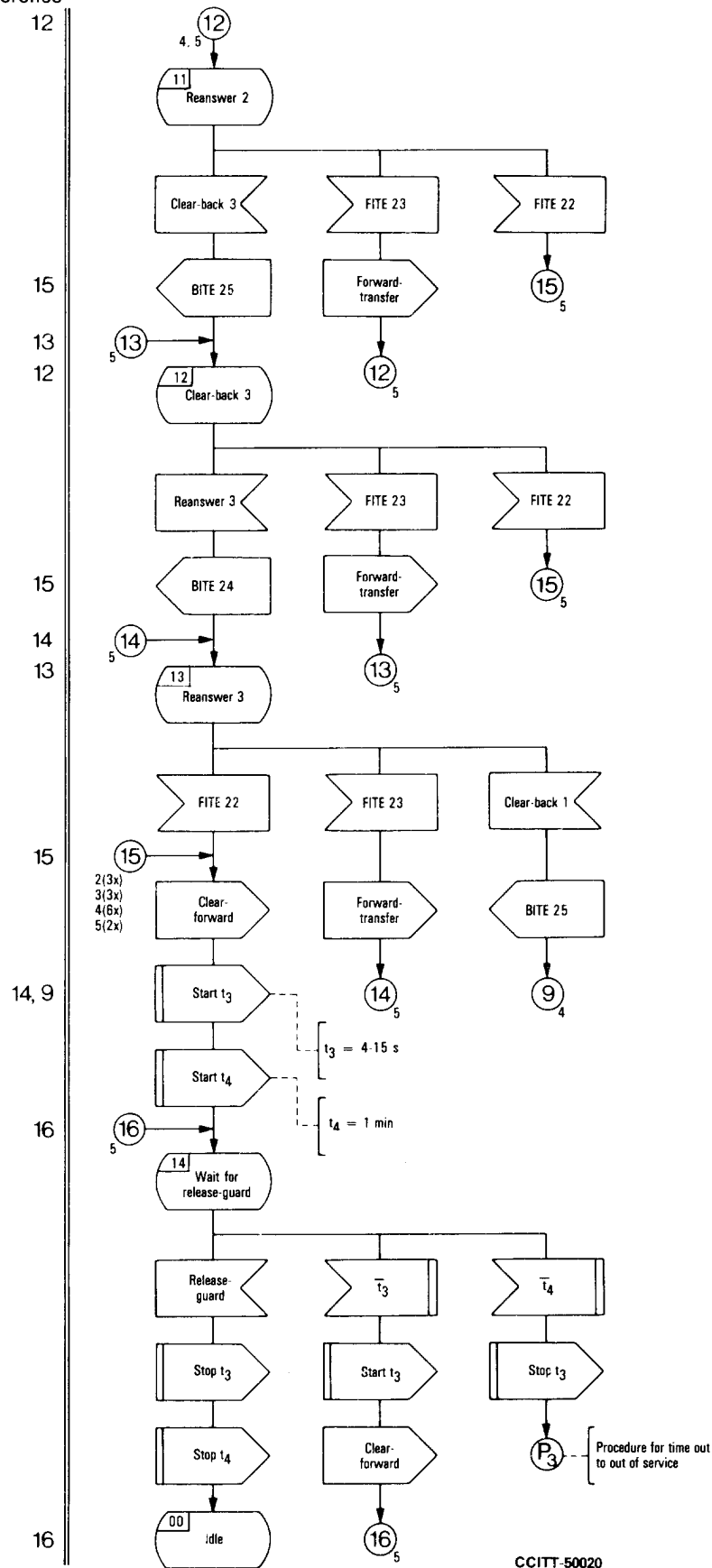
FIGURE 3/Q.623 (Sheet 2 of 5)

Outgoing Signalling System No. 6



CCITT-50010

FIGURE 3/Q.623 (Sheet 4 of 5)
Outgoing Signalling System No. 6



CCITT-50020

FIGURE 3/Q.623 (Sheet 5 of 5)
Outgoing Signalling System No. 6