

ITU Development sector's  
**TECH TALKS** *SIO community*



*Ahmed Riad*

27 April 2021



# Huawei: Leading provider of ICT infrastructure and smart devices



Bring digital to every person, home and organization  
for a fully connected, intelligent world

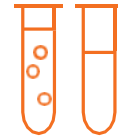
---



**197,000**  
employees



**170+**  
countries and  
regions



**53.4%**  
R&D  
employees

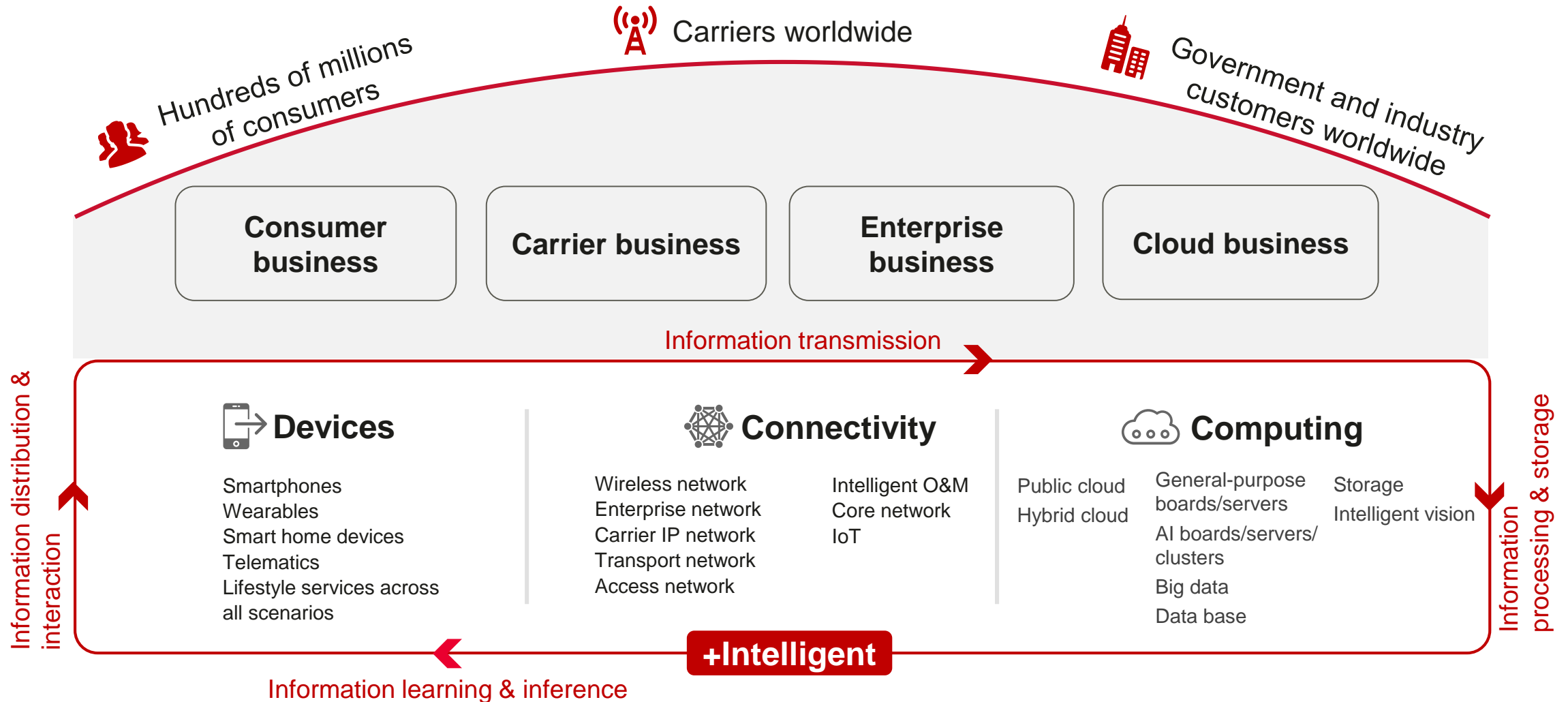


**No. 3**  
in R&D  
investment



**No. 49**  
on Global 500

# ICT products and services for three types of customers



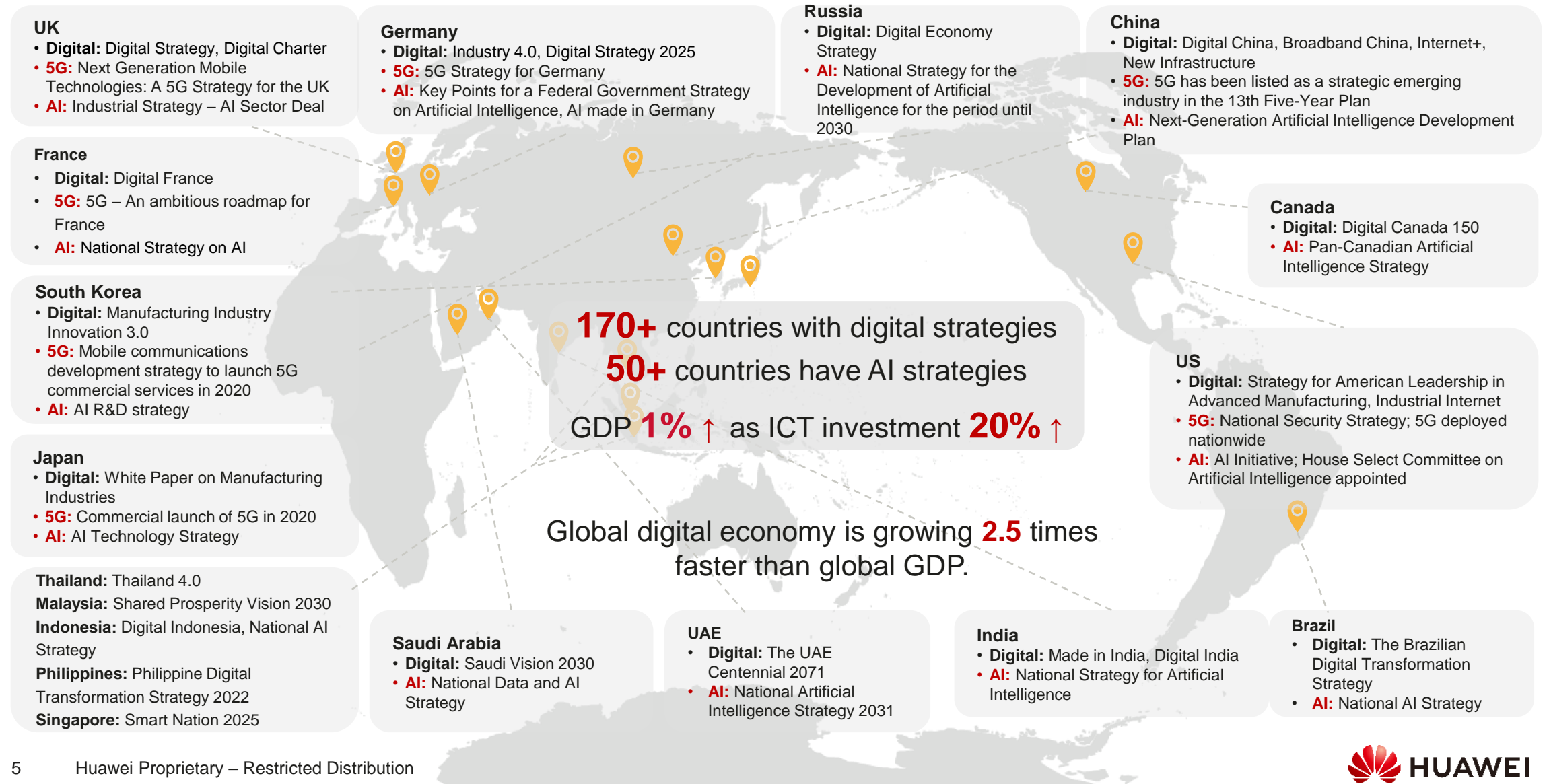


Bring digital to every person, home and organization  
for a fully connected, intelligent world

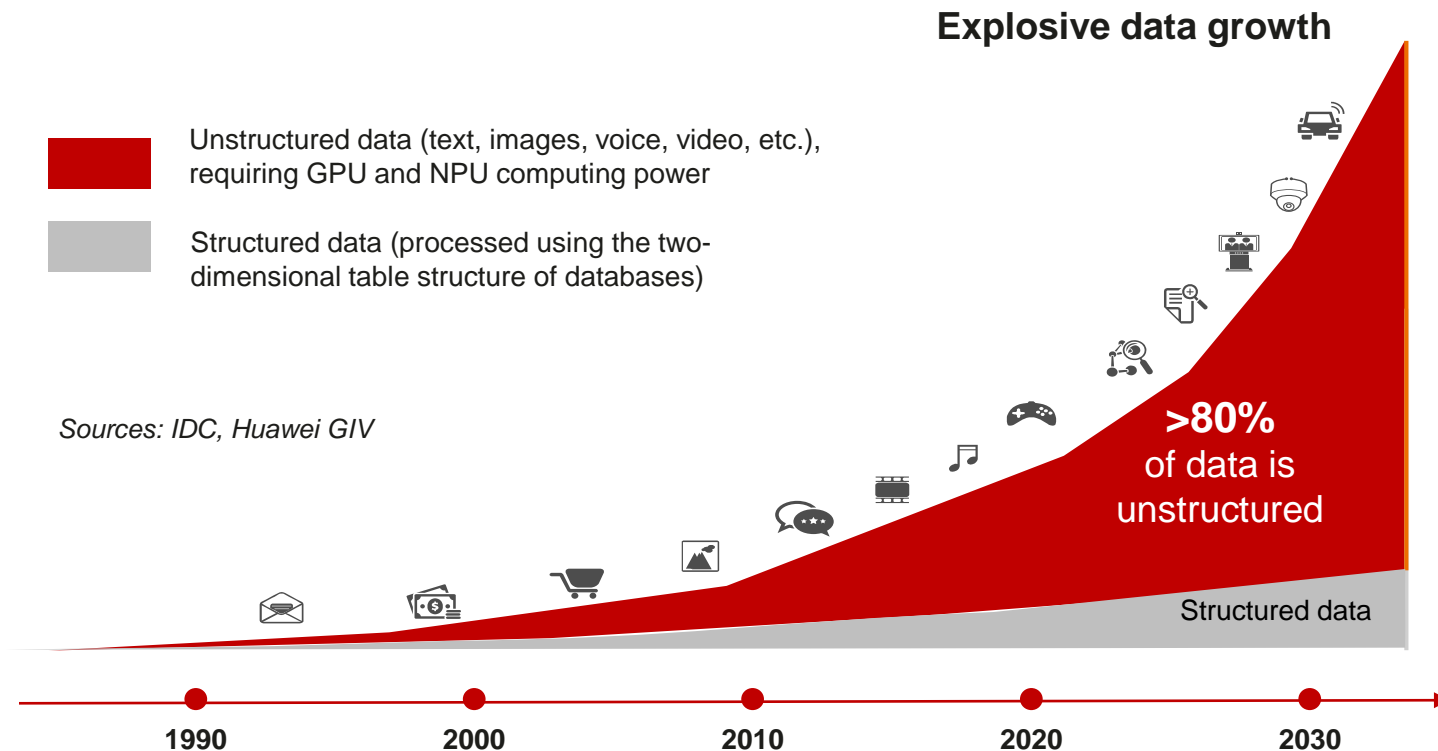
---



# 170+ countries have digital strategies



# An explosion of data presents both challenges and opportunities to storage and computing



**Insufficient storage,  
poor data flow**  
**Less than 2%** of data is stored

**Slow computing and  
poor utilization**  
**Less than 10%** of data is used



# The 4th Industrial Revolution is accelerating our pace towards an intelligent world

## The 4th Industrial Revolution



Intelligent technology



## Digitalization across industries



Digital opportunities in 2025

Sources: Huawei GIV 2025, Digital Spillover



## Intelligent world

All things intelligent

Big data and AI power new applications



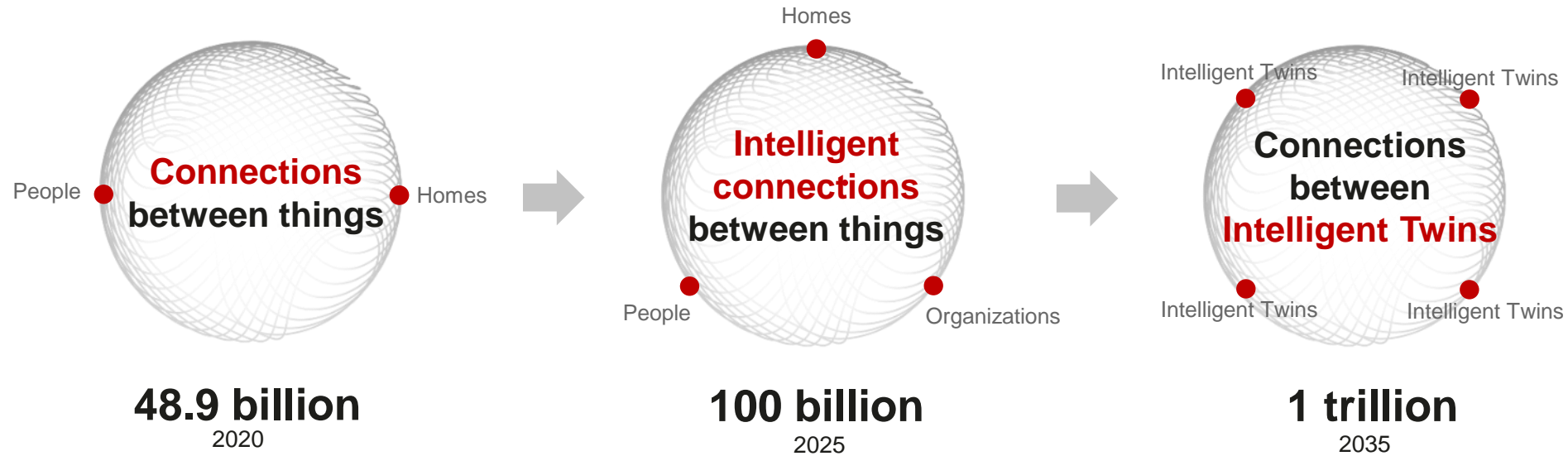
All things sensing

Sensing the physical world and mapping it with digital signals

All things connected

Data goes online to power machine intelligence

# Connectivity is playing a bigger role



Metcalfe's law  
Connectivity value  $V = k \times N^2$

(K: Value coefficient; N: Number of connections)

The new Metcalfe's law: Connectivity is productivity

$$\text{Connectivity value } V = \sum_{\text{Slice 1}}^{\text{Slice n}} \frac{k \times Bw \times N^2}{T}$$

(K: Value coefficient; Bw: Bandwidth; T: Latency; N: Number of connections; 1->n: Network slice)

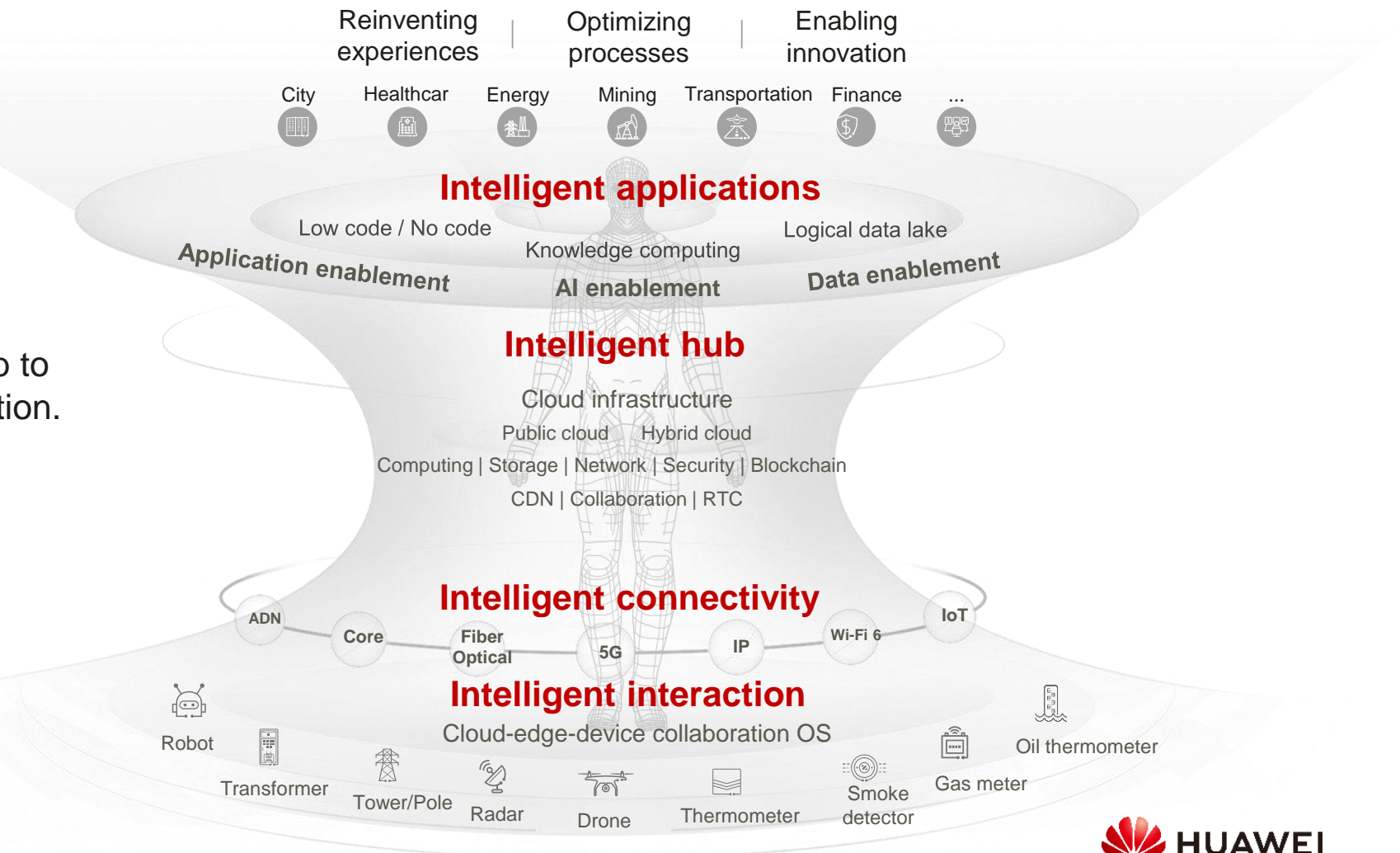
Source: Huawei GIV, ARM



# Synergizing tech domains and providing Intelligent Twins for intelligent upgrades

## Intelligent Twin: A reference architecture for intelligent upgrades

Huawei focuses on intelligent connectivity and the intelligent hub to enable transformation and innovation.



Bring digital to every person, home and organization  
for a fully connected, intelligent world

---





3.7 billion still **unconnected**

---





# Huawei's TECH4ALL digital inclusion initiative



## Four High-impact Domains

TECH4ALL believes that for the world to grow, develop, and transform, everyone is entitled to four basic rights.

Leaving no one behind in the digital world

### Education

Driving equity and quality in education

### Environment

Tech for a better planet

### Healthcare

Driving inclusive health with technology

### Development

Using ICT to boost rural development





# Huawei's TECH4ALL Digital inclusion initiative



## Three Areas of Focus

TECH4ALL begins with three core areas of focus that we believe will help us build a fully inclusive digital society



### Technology

To make digital technologies affordable for developing regions with scalable, low-cost products and solutions.



### Applications

To create digital ecosystems and help developers build applications for different communities and industries.



### Skills

To work with local governments, communities, organizations, and other partners to improve society's digital skillset

Actions speak louder than words: Creating a better, sustainable  
future together

---





Thank you

---

