

**150**   
1865 - 2015

**Join Today**

**For more information on how to join**

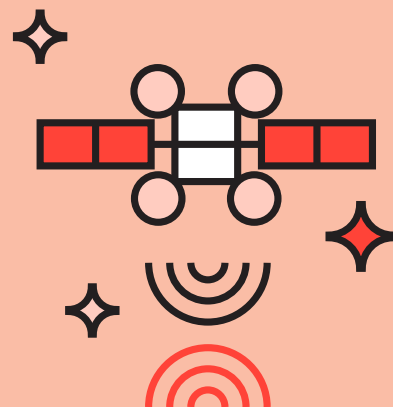
[ITU-R\\_Membership@itu.int](mailto:ITU-R_Membership@itu.int)

**For more information on Study Group 4**

[rsg4@itu.int](mailto:rsg4@itu.int)



[www.itu.int/go/rsg4](http://www.itu.int/go/rsg4)



## **ITU-R Study Group 4** Satellite Services





ITU-R Study Group 4 studies and produces ITU-R Recommendations, Reports and Handbooks on systems and networks for the fixed-satellite service, mobile-satellite service, broadcasting-satellite service and radiodetermination-satellite service

### Global Scope

- ITU-R Study Group 4 is composed of three Working Parties. These Working Parties are specialized to address the aspects of satellite services relating to their fields of expertise.
- The main topics covered by Study Group 4 are:
  - » Efficient orbit/spectrum utilization for the fixed-satellite service (FSS), broadcasting-satellite service (BSS), mobile-satellite service (MSS) and the radiodetermination-satellite service (RDSS).
  - » Systems, air interfaces, performance and availability objectives for the FSS, BSS, MSS and RDSS.
  - » IP Global broadband Internet access via satellite.

- » Use of satellite systems for early warning and relief operations.
- » Technical characteristics for systems and networks in the radionavigation-satellite service (RNSS).
- » Satellite radio interface of IMT-2000 and IMT-Advanced.
- » Technical and operational requirements for earth stations on mobile platforms.
- » Use of very small aperture terminals.
- » Earth station antenna radiation patterns.
- » Future spectrum requirements for satellite services BSS, HDTV and UHDTV systems.
- » Integrated MSS systems.
- » Use of satellite systems for real-time global flight tracking for safety of life aviation applications.

### Connect With Your Peers

- Participants of ITU-R Study Group 4 meetings are diverse and include administrations, network operators, service providers, equipment manufacturers, international organizations, and academia.
- Study Group 4 is essential for developing and maintaining **ITU-R Recommendations**, Reports and Handbooks on satellite services, which are used worldwide.
- Topics of discussion and study are contribution-driven and are based on the priorities set by the **Radiocommunication Assemblies** and **World Radiocommunication Conferences**.
- By joining Study Group 4, you will have the opportunity to impact the development of recommendations targeted towards satellite services. As a Member, you will also have the opportunity to network and collaborate with other participating specialists from government, universities, research institutes, and industry representatives around the world and thus contribute to the improvement of radiocommunications.