

150   
1865 - 2015

**Join Today**

**For more information on how to join**

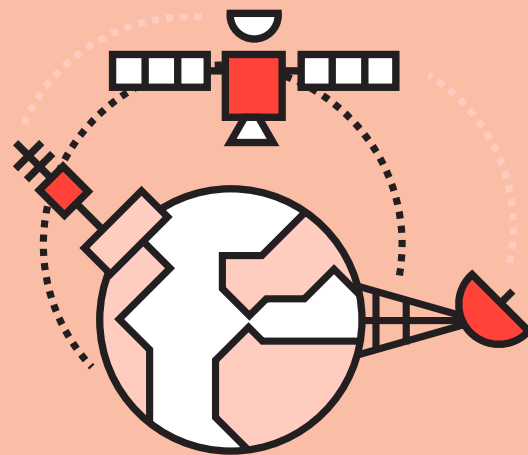
[ITU-R\\_Membership@itu.int](mailto:ITU-R_Membership@itu.int)

**For more information on Study Group 1**

[rsg1@itu.int](mailto:rsg1@itu.int)

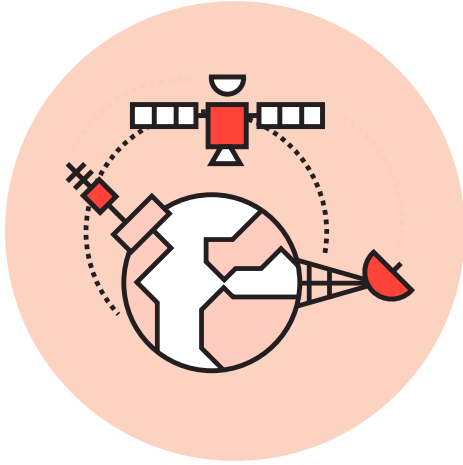


[www.itu.int/go/rsg1](http://www.itu.int/go/rsg1)



## ITU-R Study Group 1 Spectrum Management





ITU-R Study Group 1 studies Spectrum Management related issues that are the combination of administrative and technical procedures necessary to ensure the efficient utilization of the radio-frequency spectrum by all radiocommunication services defined in the ITU Radio Regulations and the operation of radio systems, without causing harmful interference

### Global Scope

- Study Group 1 produces recommendations, reports, opinions and handbooks on various related topics.
- ITU-R Study Group 1 is composed of three Working Parties. These Working Parties are specialized to address the following topics relating to their fields of expertise.

- The main topics covered by Study Group 1 are:
  - » Spectrum engineering techniques, including protection of radiocommunication services from unwanted emissions and other sources of interference such as radiation from ISM equipment.
  - » Spectrum management methodologies and economic strategies.
  - » Long-term strategies for spectrum planning and utilization and principles of spectrum sharing.
  - » Spectrum monitoring and measurements techniques.
  - » Inspection of radio stations and identification of emissions and location of interference sources.
  - » Automated techniques for spectrum management and monitoring.

### Connect With Your Peers

- Participants of ITU-R Study Group 1 meetings are diverse and include administrations, network operators, service providers, equipment manufacturers, international organizations and Academia.
- Study Group 1 is vital in developing and maintaining **ITU-R Recommendations**, Reports, Opinions and Handbooks on spectrum management and monitoring, which are used worldwide.
- Topics of discussion and study are contribution-driven and are based on the priorities set by the **Radiocommunication Assemblies** and **World Radiocommunication Conferences**.
- By joining Study Group 1, you will have the opportunity to impact the development of Recommendations targeted towards spectrum management. As a Member, you will also have the opportunity to network and collaborate with other participating specialists from government, universities, research institutes and industry representatives around the world and thus contribute to the improvement of radiocommunications.