

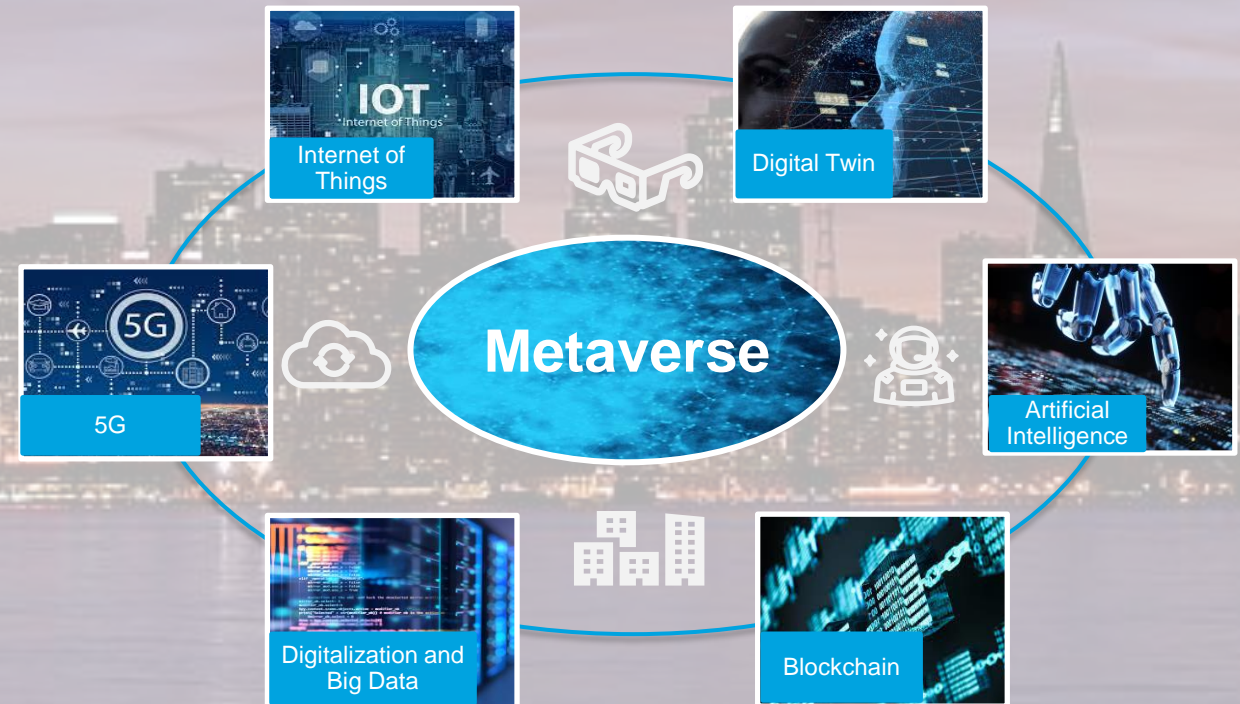
# Side Event on Building People-Oriented Cities Through Digital Transformation

*7th Multi-stakeholder Forum on Science, Technology and  
Innovation for the Sustainable Development Goals (STI Forum)*

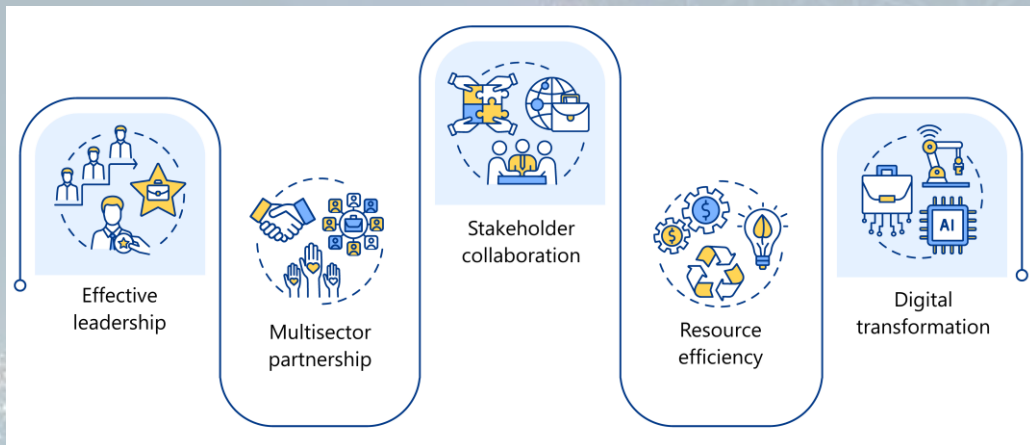
**Cristina Bueti,**  
ITU Focal Point on Environment and  
Smart Sustainable Cities & Communities

# Science, Technology and Innovation to Support Cities Facing Challenges

- GHG Emissions
- Infrastructure Gaps
- Overpopulation
- Informal Housing
- Crime
- Service Gaps
- Low Connectivity



# Digital Transformation for People-Centred Cities



(Source: Shutterstock)



(Source: UN-Habitat)

# ITU Supports STI for Cities and Communities



**U4SSC:**  
United for Smart Sustainable Cities initiative

**Joint IEC-ISO-ITU Smart Cities Task Force**

**JCA-IoT and SC&C:**  
Joint Coordination Activity on IoT and Smart Cities and Communities

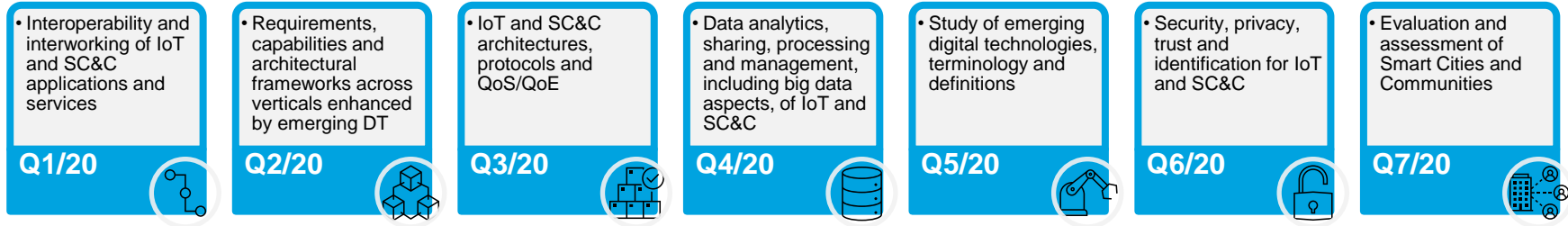
**ITU-T Study Group 20:**  
ITU Study Group on IoT and Smart Cities and Communities



**ITU:**  
International Telecommunication Union – the UN specialized agency for ICTs

# ITU-T Study Group 20 IoT and Smart Cities & Communities

- Internet of Things and its Applications
- Smart Cities and Communities
- IoT Identification
- Digital health related to IoT and SSC



## Regional Groups



## Joint Coordination Activity & New Focus Group

- Joint Coordination Activity on Internet of Things and Smart Cities and Communities (JCA-IoT and SC&C)
- Focus group on Artificial Intelligence (AI) and Internet of Things (IoT) for Digital Agriculture (FG-AI4A)

# Accelerating Digital Transformation in Cities with ITU-T Recommendations



## Requirements and use cases

Recommendation ITU-T Y.4208: "IoT requirements for support of edge computing"

Recommendation ITU-T Y.4211: "Accessibility requirements for smart public transportation services"

Recommendation ITU-T Y.4214: "Requirements of IoT-based civil engineering infrastructure health monitoring system"



## Infrastructure and architecture

Recommendation ITU-T Y.4470: "Reference architecture of artificial intelligence service exposure for smart sustainable cities"

Recommendation ITU-T Y.4480: "Low power protocol for wide area wireless networks"

Recommendation ITU-T Y.4500.1: "oneM2M-Functional Architecture"



## Interoperability

Recommendation ITU-T Y.4200: "Requirements for interoperability of smart city platforms"

Recommendation ITU-T Y.4201: "High-level requirements and reference framework of smart city platform"

Recommendation ITU-T Y.4805: "Identifier service requirements for the interoperability of Smart City applications"



## Data management

Recommendation ITU-T Y.4472: "Open data application programming interface (APIs) for IoT data in smart cities and communities"

Recommendation ITU-T Y.4461: "Framework of open data in smart cities"

Recommendation ITU-T Y.4464: "Framework of blockchain of things as decentralized service platform"

Recommendation ITU-T Y.4475: "Lightweight intelligent software framework for IoT devices"



## Assessment

Recommendation ITU-T Y.4903: "Key performance indicators for smart sustainable cities to assess the achievement of sustainable development goals"

Recommendation ITU-T Y.4904: "Smart sustainable cities maturity model"

Recommendation ITU-T Y.4905: "Smart sustainable city impact assessment"

Recommendation ITU-T Y.4906: "Assessment framework for digital transformation of sectors in smart cities"



## Identification and security

Recommendation ITU-T Y.4807: "Agility by design for Telecommunications/ICT Systems Security used in the Internet of Things"

Recommendation ITU-T Y.4808: "Digital entity architecture framework to combat counterfeiting in IoT"

Recommendation ITU-T Y.4809: "Unified IoT Identifiers for intelligent transport systems"

# United 4 Smart Sustainable Cities



**City Platforms**



**Building Urban Economic Resilience at City Level**



**Innovative Financing for Smart Sustainable Cities Projects**



**Artificial Intelligence in Cities**

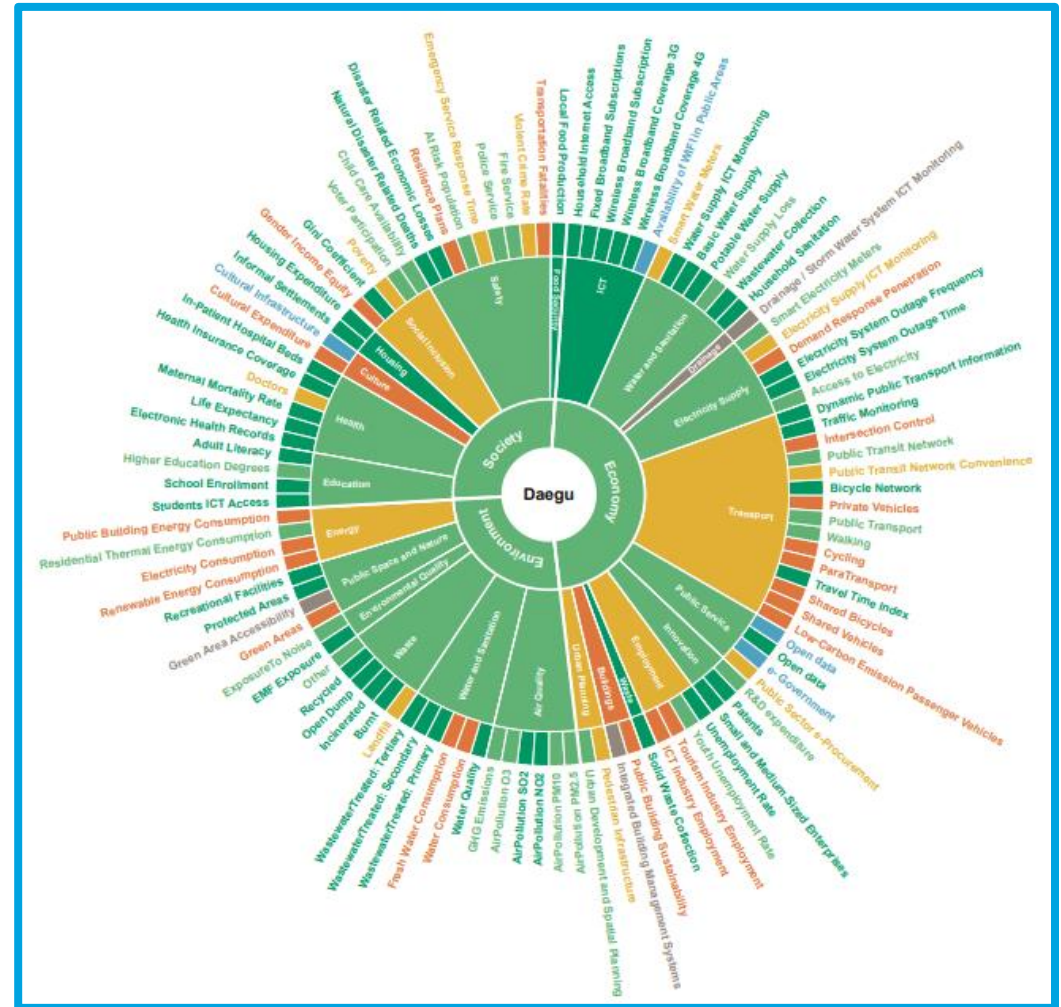
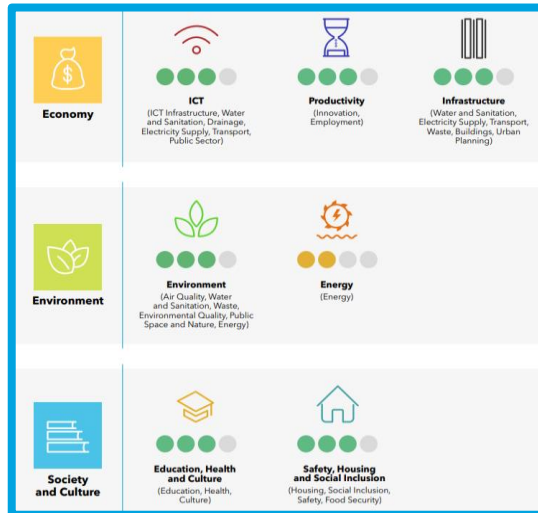
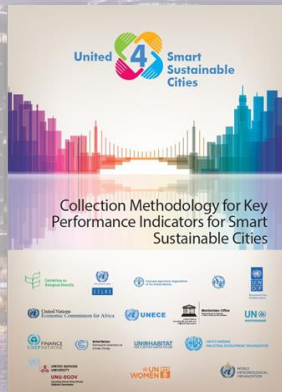
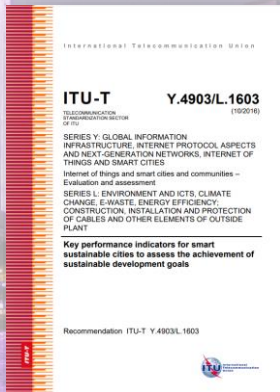


**Procurement for Smart Sustainable Cities**



**Enabling People-Centred Cities through Digital Transformation**

# ITU's Implementation of the U4SSC KPIs in more than 150 Cities worldwide





# Supporting Digital Transformation for Cities and Communities



Digital Transformation of Cities and Communities



Developing a Digital Transformation Strategy



Data Processing and Management



Connectivity, Digital Divide and Digital Inclusion



Accessibility and Digital Inclusion



Reduce the Environmental Impact of Cities



Smart Energy Management



Smart Water Management



Emergency Management



4IR and Smart Manufacturing

<https://toolkit-dt4c.itu.int/>

# Digital Transformation for People-Oriented Cities and Communities

Grid Connected

ITUWebinars

Digital transformation  
for cities and  
communities

<https://itu.int/go/dt4cc>



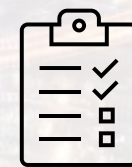
<https://itu.int/go/dt4cc>



Develop international  
standards to support  
Digital Transformation  
for Cities



Make Tangible  
Progress Towards  
Smartness and  
Sustainability



Resources  
Developed by ITU-T  
SG20 and U4SSC to  
address  
cities' challenges

# Thank you!

Questions? Interested in learning  
more?  
Let us know!



**Email**

[u4ssc@itu.int](mailto:u4ssc@itu.int)



**Website**

[ITU-T, Smart Sustainable Cities](https://www.itu.int/ITU-T/SmartSustainableCities)