

ITU KALEIDOSCOPE
ATLANTA 2019

Digital transformation in practice: Challenges and opportunities in Latin America & the Caribbean

Jennifer Nelson

Sector Specialist, Digital Health
Inter-American Development Bank
jennifern@iadb.org

4-6 December
Atlanta, Georgia, USA



Digital transformation in practice: Challenges and opportunities in LAC

- Background & Context: IDB and our work in digital health
- Examples of IDB's work related to AI and digital transformation in health and social protection
- Opportunities & Challenges
- Upcoming work & learning agenda

The Interamerican Development Bank

The IDB is the main source of multilateral financing and expertise for sustainable economic, social and institutional development in Latin America and the Caribbean

The IDB is owned by 48 member states, of which 26 are borrowing members

[Source: IDB](#)

Social Protection and Health (SPH) Division: Our Digital Health Projects



Challenge





Describe the future state we want to build



Identify the technologies that help us to build that future



Define and build the digital ecosystem we need to support those technologies



Success requires the mission to be supported with *continuously improving processes, motivated staff who support change and the useful and usable technologies* that they would use.

[Nelson, J., L. Tejerina, G. Cafagna et al. 2019. "Social Protection and Health Division's Approach to Digital Transformation: Guidelines and Recommendations." Washington, DC, United States](#)

Examples of IDB's work related to AI and digital transformation in Health and Social Protection



Tras Sisbén 4 arranca era del registro social: director del DNE

Se trata de la más poderosa base de datos que haya tenido el país para reducir uso de los recursos de subsidios, focalizándolos a partir de información cruzada

MARHTA MORALES MANCHEGO Y MAURICIO GALINDO CABALLERO - EL TIEMPO | @marthamoralessm @galmiau

La protección social en Colombia está en medio de un revolcón, y lo que viene -en el corto plazo- tiene todo con la información que el Sisbén 4, cuya entrega ya está próxima, le lo cual se iniciará la registro social, es decir, la poderosa base de datos que haya contado el país social, que permitirá ganar un enfoque más certero en subsidios.

Estos temas habló con el director de Planeación Nacional, Luis Alberto Rodríguez, tras escasas 3 semanas haber asumido el cargo.

El empleo es el peor problema que afronta el país. Cumplirán la meta del 7,9, como está



Luis Alberto Rodríguez, nuevo director de Planeación Nacional. FOTO: CORTESÍA DNP

...ro, pero es el mejor exacto. Pero han completado, pero era la llegada a oír ma; probable del todo subsidios bargo, aporte lud, y eso per Colombia con el Sisbén neación, que año. El reto es zonas por las pobreza, de en menos de el subsidiado por ciento de

Eso significa hay colado. No he estado la palabra 'co realidad es que no tiene lida y gradua nas que enti de protección

¿Y cómo en En el próximo mos la variará permitirá de dades. Sisbén de pobre. Es



✓ C+S+A+SocioDem.



Clear All Filters

Algorithmic Fairness and Efficiency in Targeting Social Programs at Scale, 2018

Colombia: Reduction of 17% in inclusion errors

Costa Rica: Reduction of 30% in inclusion errors

ITU KALEIDOSCOPE

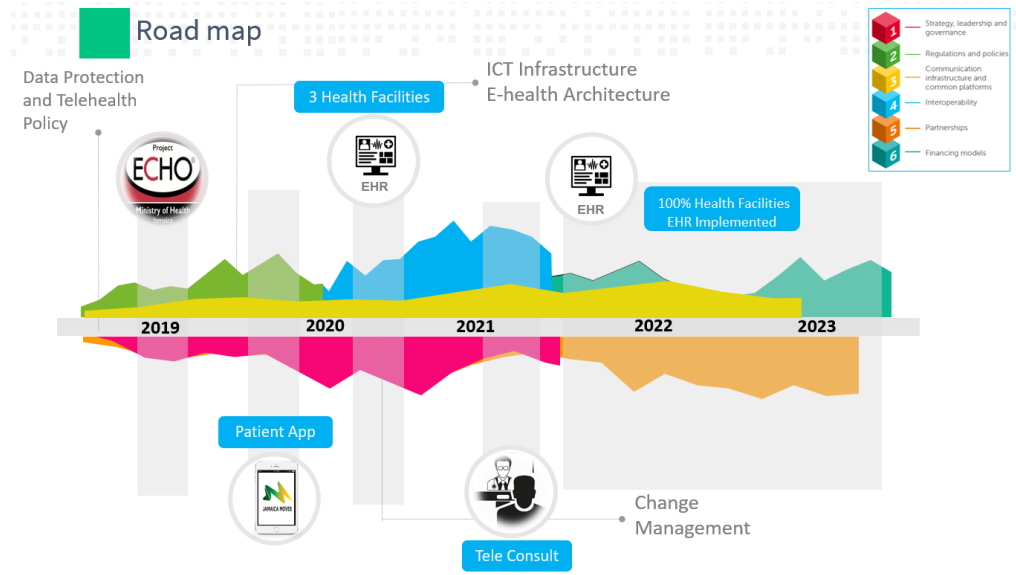
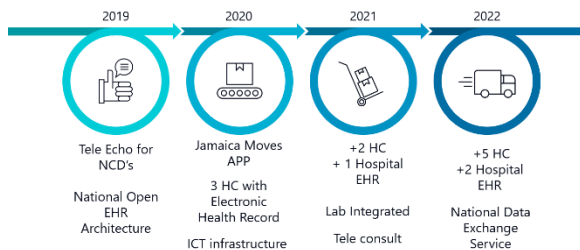
ATLANTA 2019



Governance Outcomes

Data Protection	Interoperability	Digital Health
-Personal Health information protection regulatory framework	-Interoperability and standards Policy	-National Digital Health Blueprint
-Secondary use of data policy	-E-prescription Policy	-National IS4H Committee
-Personal health information Code of Practice	-Regulation for Health information exchange	-Sustainability model
-Information Security Strategy	-National Health catalogs	-EHR and Tele-Health Policy

Digital Health Outcomes

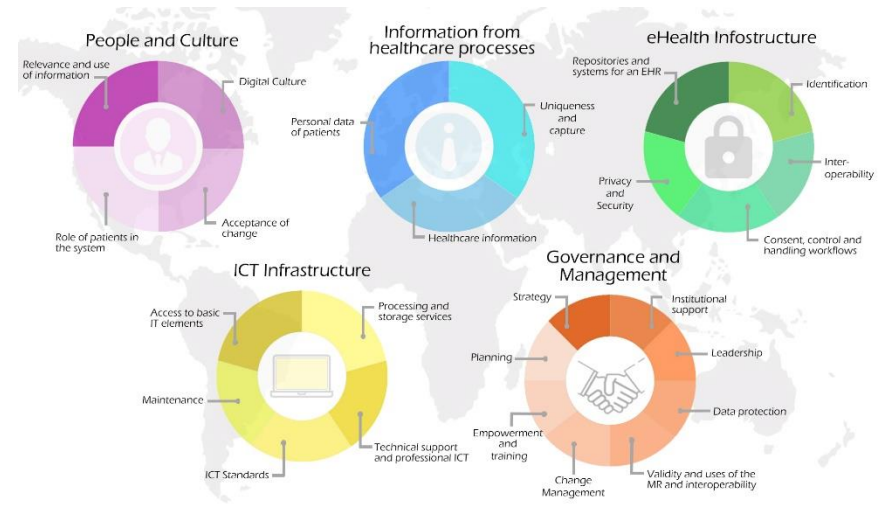


IS4H Jamaica: One Joint National Plan

Collaboration between PAHO, IDB, GF, MOH and eGOV

4-6 December
Atlanta, Georgia, USA



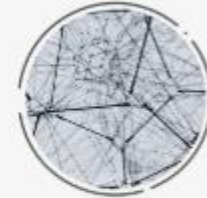


[RACSEL Publications & Toolkit](#)

IDB. (2019) IDB National EHR System Maturity Model. Forthcoming

01

WHAT IS fAIr LAC?



Led by the IDB, fAIr LAC is an **alliance** between the public sector, the private sector and the civil society working together to ensure a responsible application of AI in LAC.

A platform working to:



Develop guiding standards and tools to put into practice a responsible and reliable use of AI.



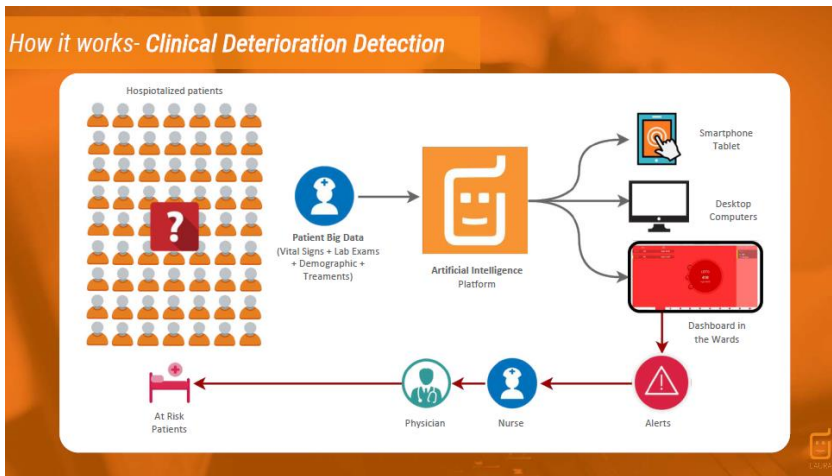
Experiment use cases that will build knowledge on the ethical risks around the use of AI in social services, and how to address them.



Lead the discussion about the responsible use of AI based on diversity, inclusion, and centered around citizens.

[Source: fAIr LAC](#)

AI Applications in Brazil



[Laura](#)



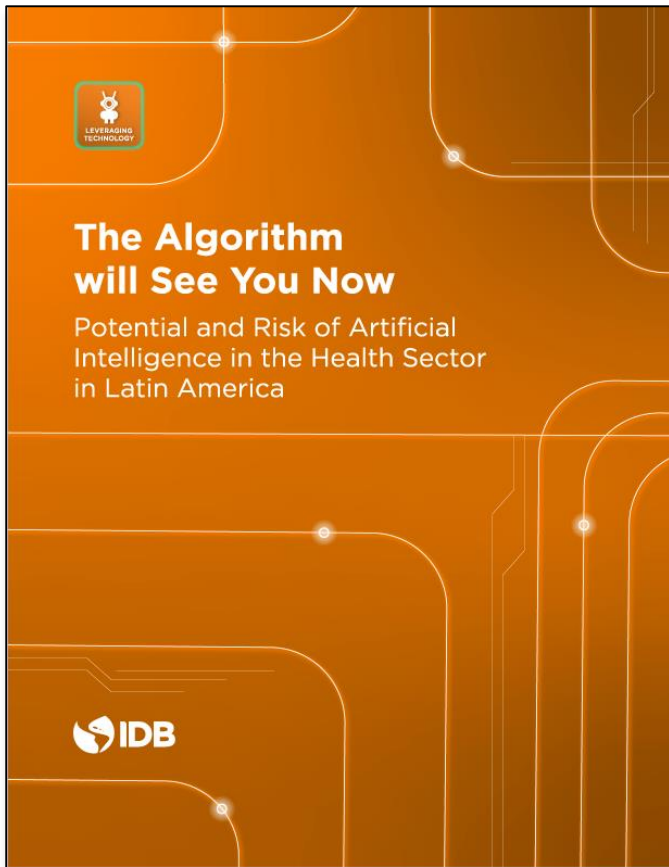
[Portal Telemedicina](#)

South-to-South Learning: AI to detect Diabetic Retinopathy in Chile and Jalisco, Mexico

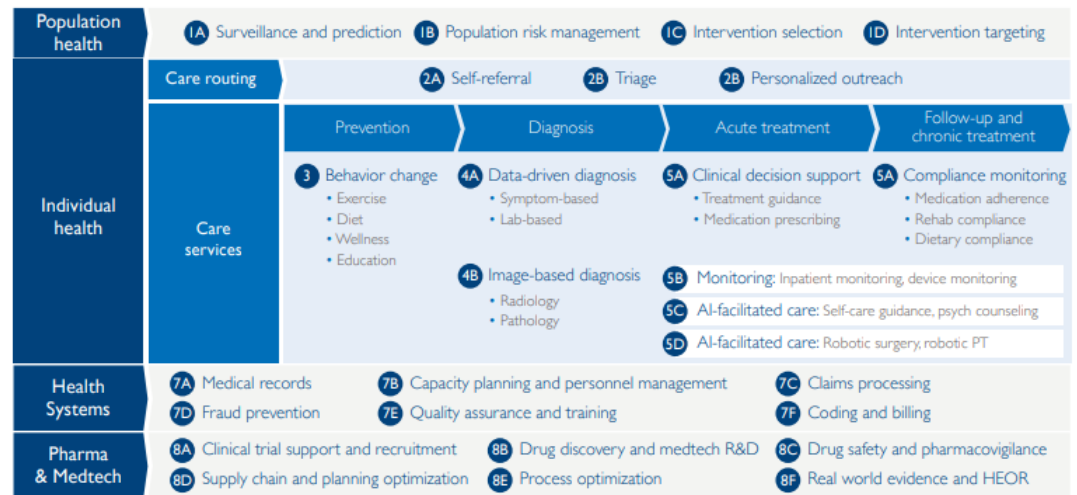


[TeleDX - Dart](#)

Coming Soon!



Framework of all AI Use Cases in Healthcare



Source: AI in Global Health: Defining a Collective Path Forward, USAID, 2019

Data
Partnership.org

International Consortium for Data Collaboratives

Public-Private Data Partnerships for
International Development

The International Monetary Fund, the Inter-American Development Bank, and the World Bank are forming an International Consortium for Data Collaboratives. The Consortium fosters efficient and responsible data partnerships for public good.

[Contact us](#)

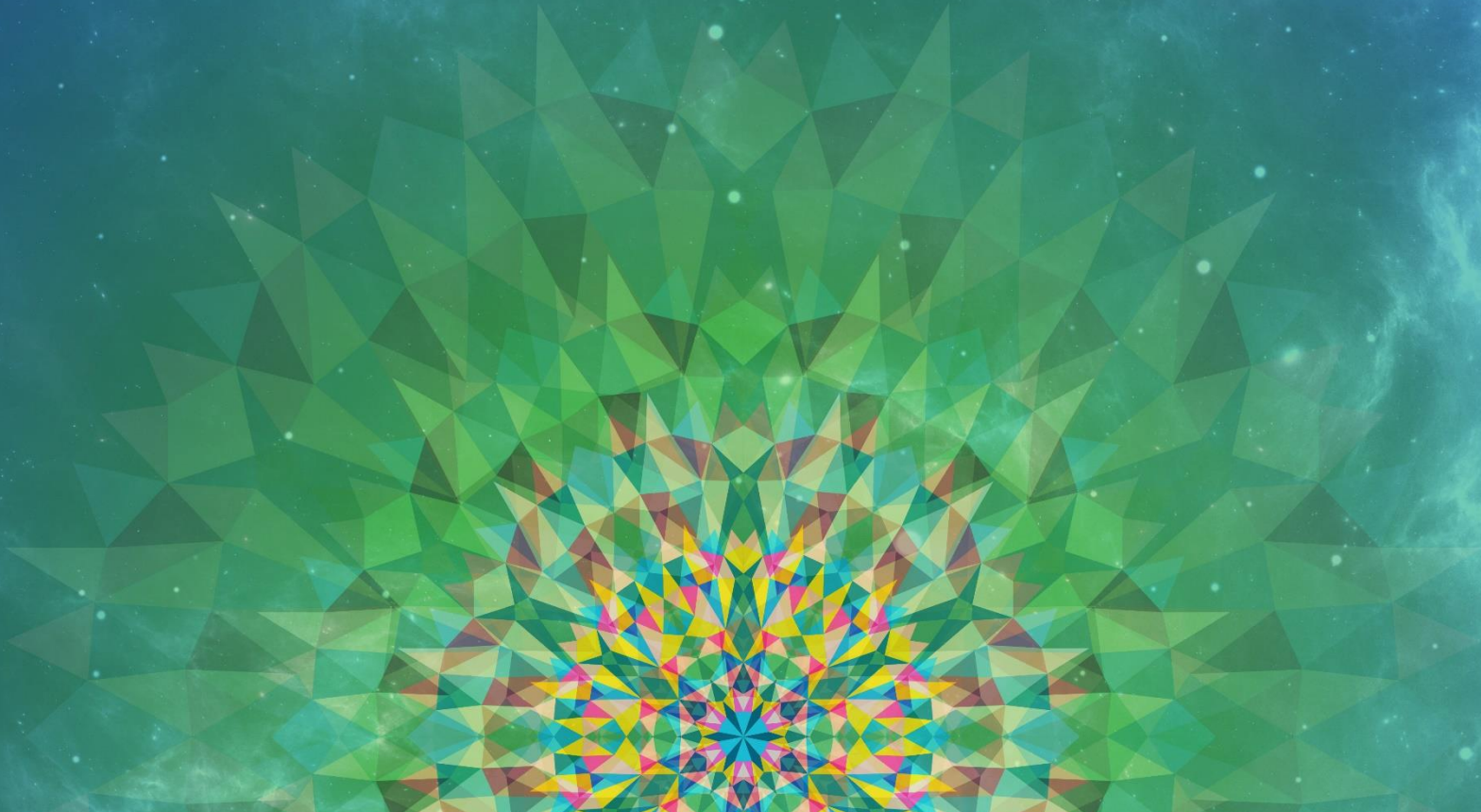


4-6 December
Atlanta, Georgia, USA



Opportunities & Challenges

Upcoming work & learning agenda



Opportunities

- Regional Economies of Scale
- Task shifting
- Improved quality and access
- Lack of legacy systems
- Talent
- Regional Priority

Challenges

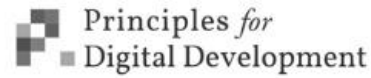
- Acquiring timely, quality, standardized data & knowing what to do with the data once we have it
- Governance and regulation in LAC related to AI
- Lack of common understanding among stakeholders of risks and opportunities related to AI
- Training opportunities in Spanish in Biomedical Informatics
- Procurement
- Language barrier to existing resources & standards
- Trust and data ownership
- Culture change & Peopleware

Related upcoming work and learning agenda

- AI in the Social Sector in LAC: Application, potential and risk
- Results of application of the IDB EHR MM in 7 countries
- Identify non-traditional data sources for public health available in Latin America
- Interoperability of social sector data & standards: health, education, poverty, social protection
- Regional data exchange & telehealth
- Operational Research
 - Costs
 - Implementation
 - Inequality

ITU KALEIDOSCOPE

ATLANTA 2019



[Learn more @ +Digital](#)

4-6 December
Atlanta, Georgia, USA



ITU KALEIDOSCOPE

ATLANTA **2019**

Thank you

