

Sponsored by



mailshellTM



SpamIQ

Free spam analysis and data mining tool.

Objective: Provide ISPs and network operators good analysis tools to analyze and understand spam traffic patterns on their networks. Mailshell and ISOC are providing free SpamIQ analysis reports.

What is SpamIQ?

SpamIQ is Mailshell's methodology for charting spam attack patterns, and parsing the data based on key attributes including senders of spam, sending ISPs, spam languages, character sets, etc.

Benefits to Service Providers and Mobile Operators

- *Understand Spam Attack Vectors in Greater Detail:* Operators receive free, detailed reports on spam hitting their networks.
- *Improve Spam Detection, Filtering and Performance:* Operators can configure their systems for better accuracy and performance based off data reports.
- *Enhance Networks:* Prioritize resources to ensure that spam doesn't devour hardware, software, bandwidth or storage, and/or personnel resources.

How to Submit Corpora of Spam

1

Create Corpus



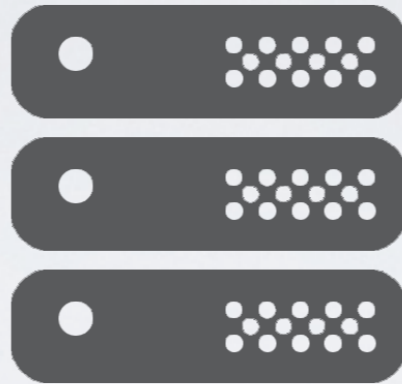
- Messages must have all original headers intact
- Messages in RFC 822 format
- Corpus size: Between 10,000 and 10 million spam.



- Create a .ZIP file or tarball

2

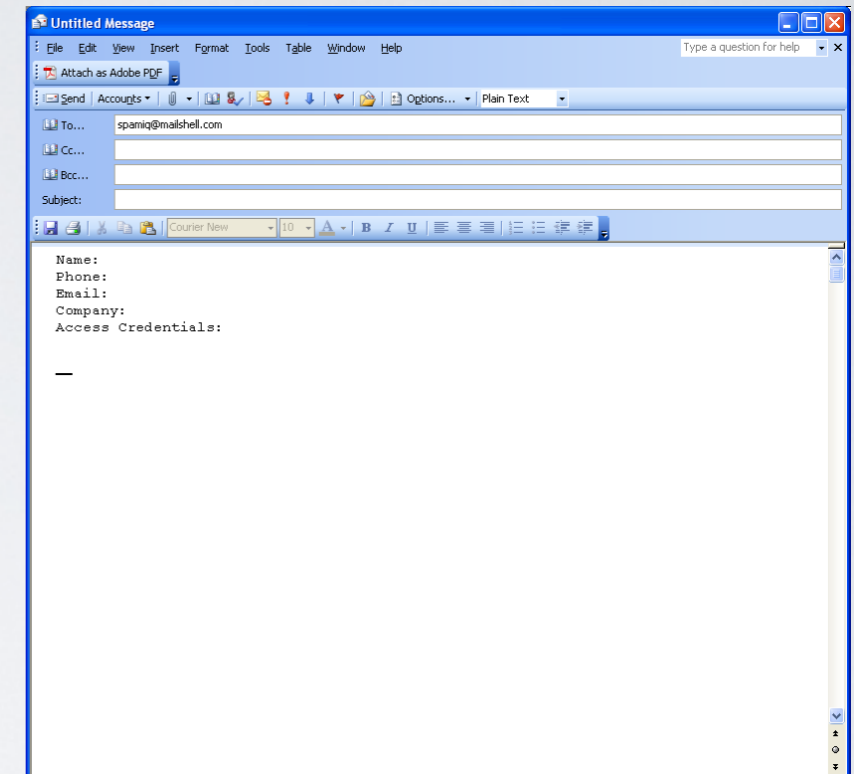
Post on Your Network



Post to your network in a password-protected directory.

3

Provide Access Credentials



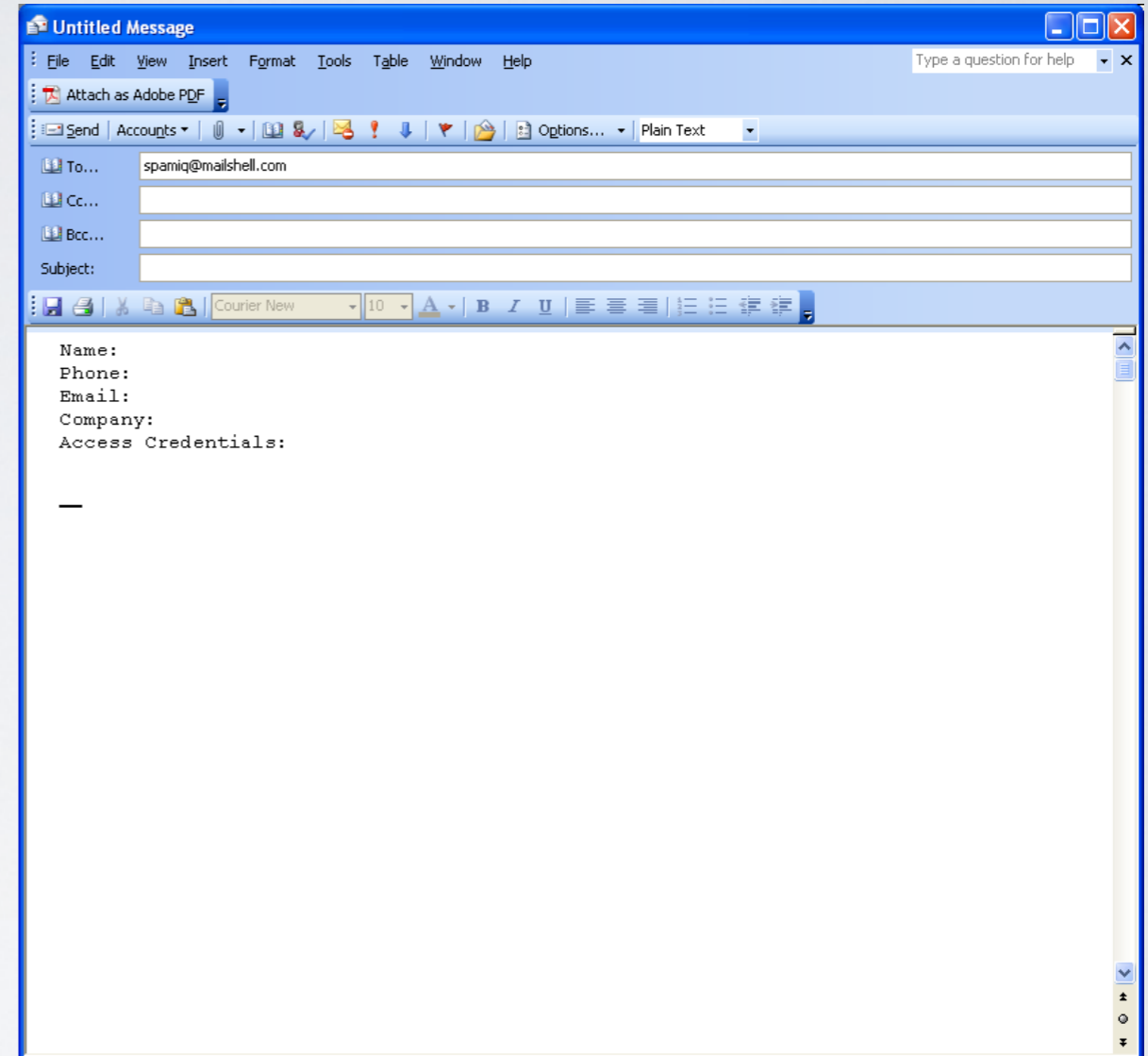
Submit access credentials via email for us to retrieve the corpus.

Submitting Access Credentials to Mailshell

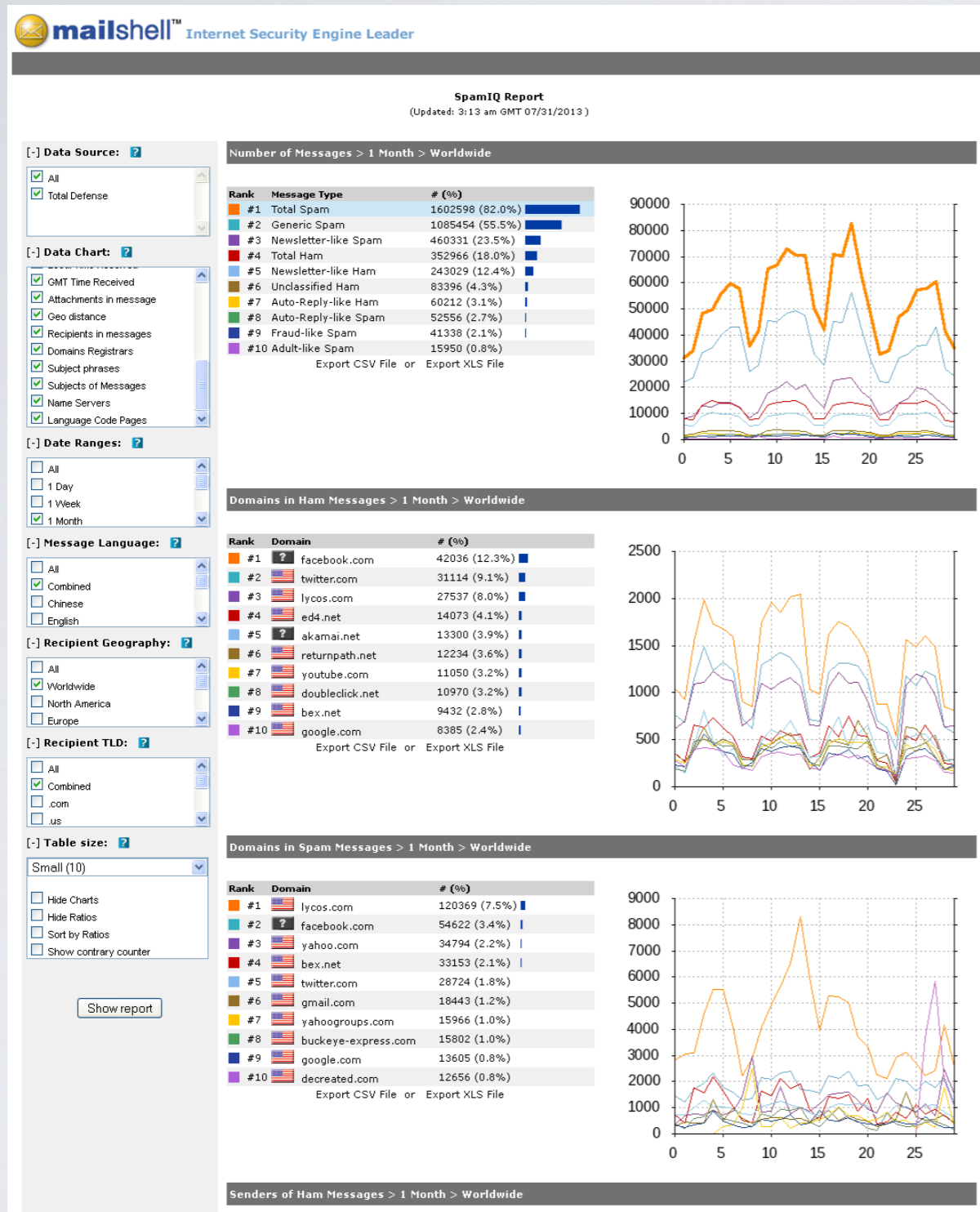
Send an email to spamiq@mailshell.com and include the following:

- Name
- Phone Number
- Email*
- Company Name
- Access Credentials for Corpus

*Please use your corporate email address.



SpamIQ Report



Sample SpamIQ report

SpamIQ Program version 1.0 includes analysis of:

- Types of Spam Messages
- Domains in Messages
- Domains Without Subdomains
- Senders of Messages
- Countries of Senders
- Languages of Messages
- Charsets of Messages
- ISPs of Senders
- Message Size
- Local Time Received
- GMT Time Received
- Attachments in message
- Geo distance
- Recipients in messages
- Domains Registrars
- Subject phrases
- Subjects of Messages
- Name Servers
- Language Code Pages

Reports can be sorted by:

- Date Ranges
- Message Language
- Recipient Geography
- Recipient TLD

Who is Mailshell?



Mailshell, based in San Francisco, CA., is a leading provider of spam filtering technologies to OEMs. Millions of users and thousands of companies worldwide rely on Mailshell filtering including the following:



Check Point®
SOFTWARE TECHNOLOGIES LTD.



McAfee

WEBROOT®

AhnLab

NORMAN®



eset®

GFI™

NETGEAR®



PANDA
SECURITY



Sponsored by



mailshell™

