

# Enhancing Over-The-Top (OTTs) service quality and connectivity assessment in mobile networks

ITU Workshop on "Telecommunication Service Quality"

Freetown, Sierra Leone,

July 2025

**Gibril Njai**

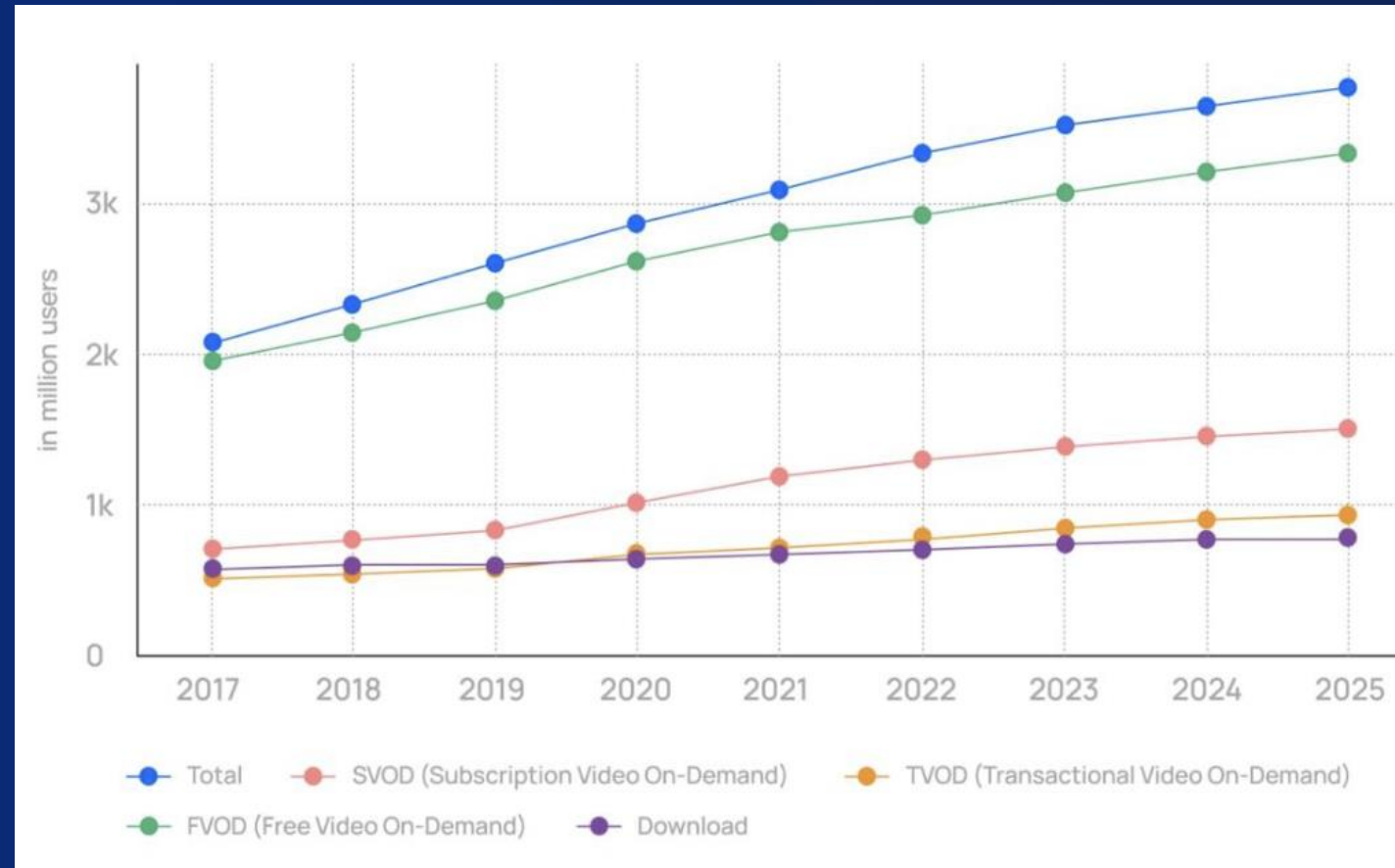
Ernest Bai Koroma University of Science and  
Technology (EBKUST), Faculty of Engineering and  
Technology, Magburaka



# Introduction

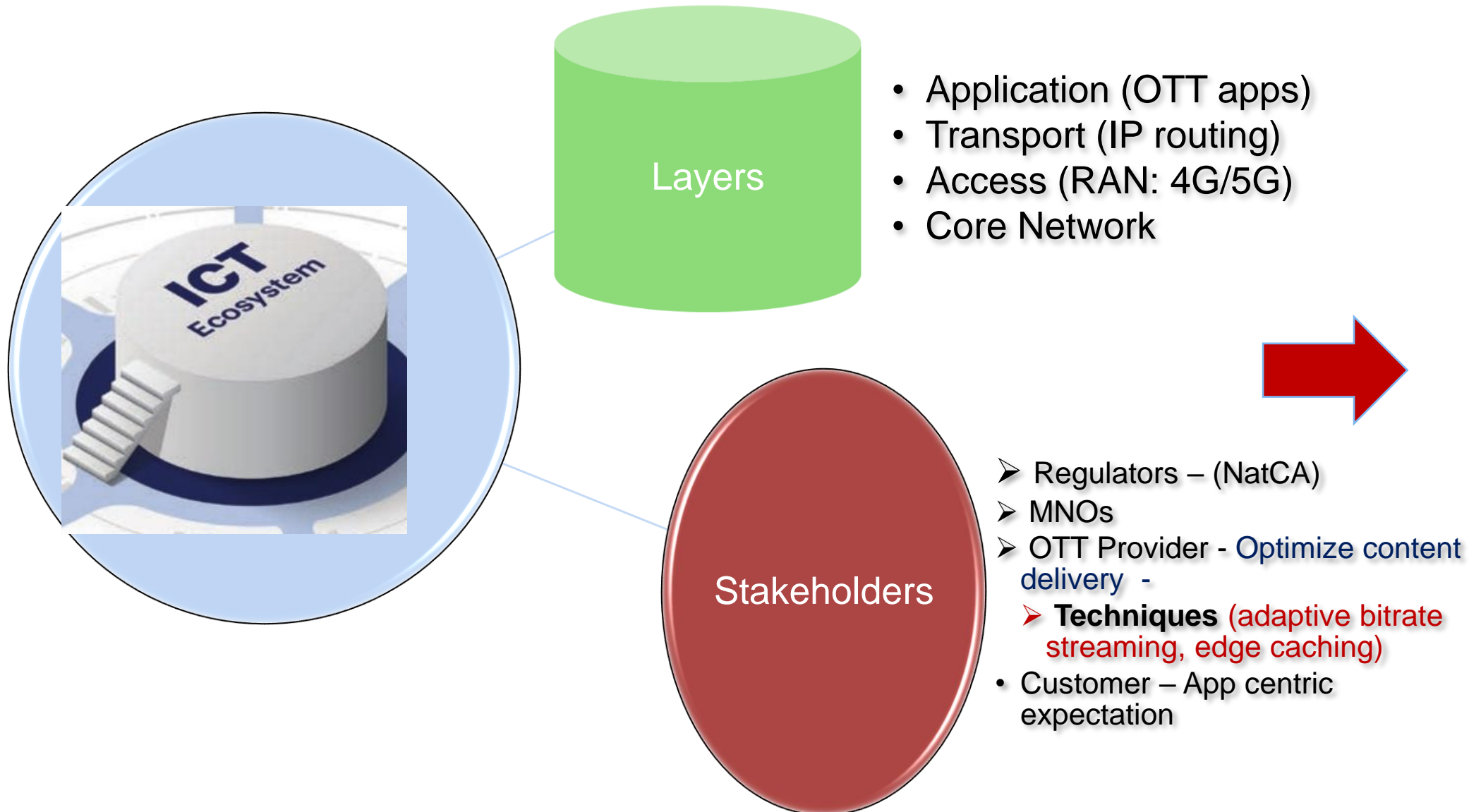
- Over-The-Top (OTT) services
  - refers to **Apps like Netflix, WhatsApp, YouTube** delivered over the internet that bypass traditional network operators.
  - 70%+ of mobile data traffic is OTT
- Generally, users expect high performance regardless of network - **no longer signal strength or call drop rates**
  - ✓ Hence, **Quality of Service (QoS)** and **accurate Quality of Experience (QoE)** assessments is technically complex.

## The Rise of OTTs – wings of fire

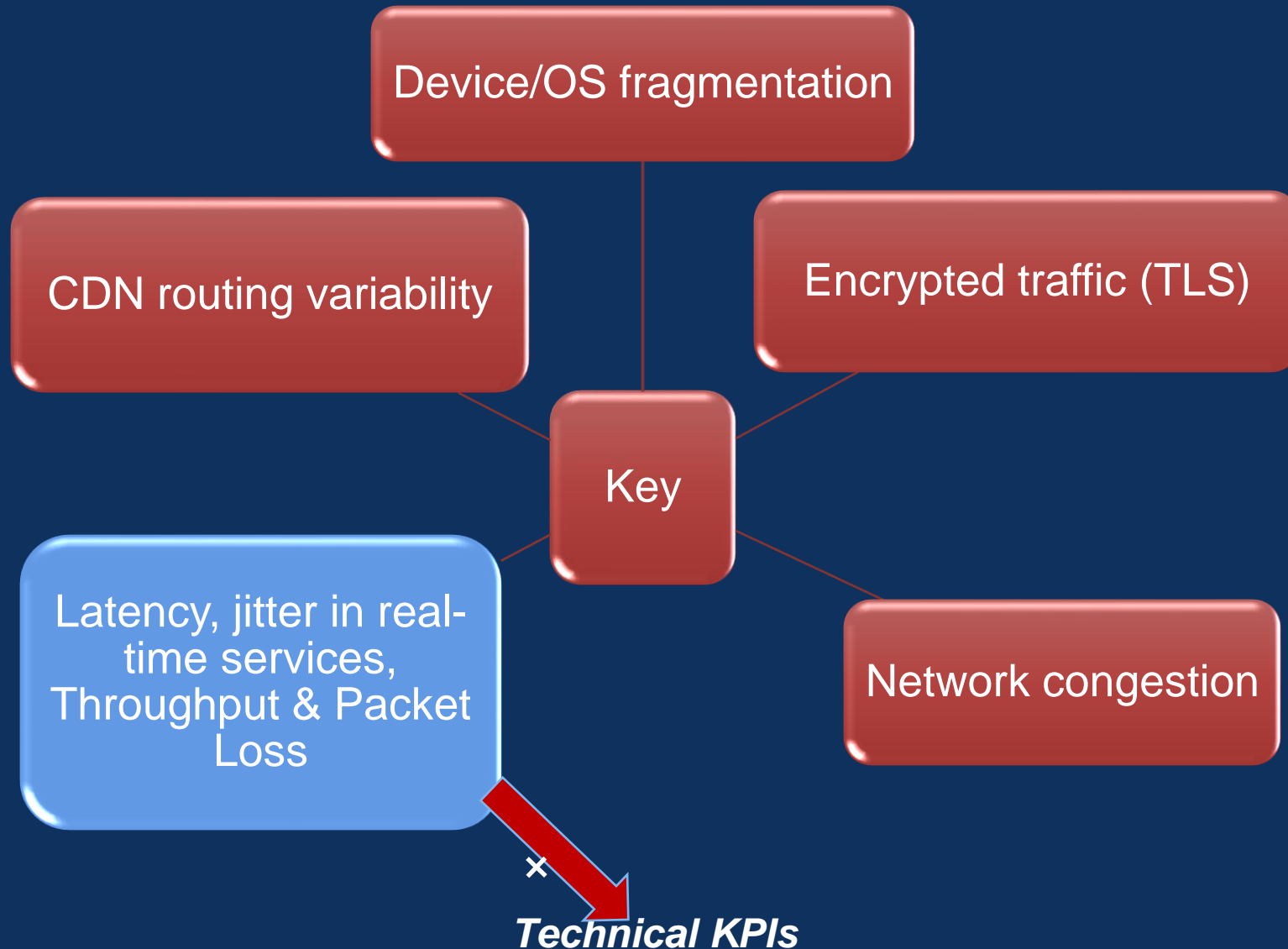


<https://www.uscreen.tv/blog/ott-statistics/>

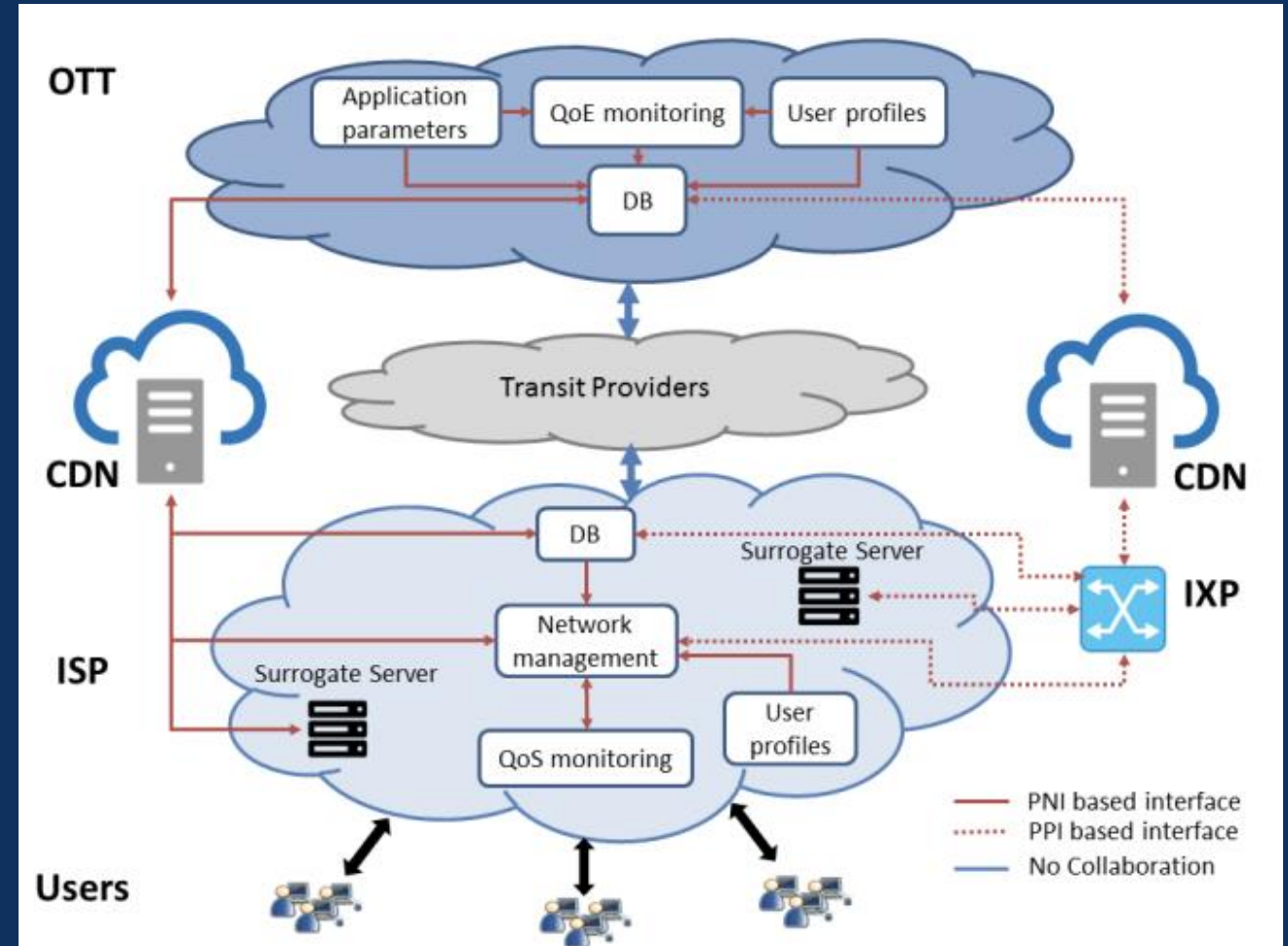
# OTT & Mobile Network Ecosystem



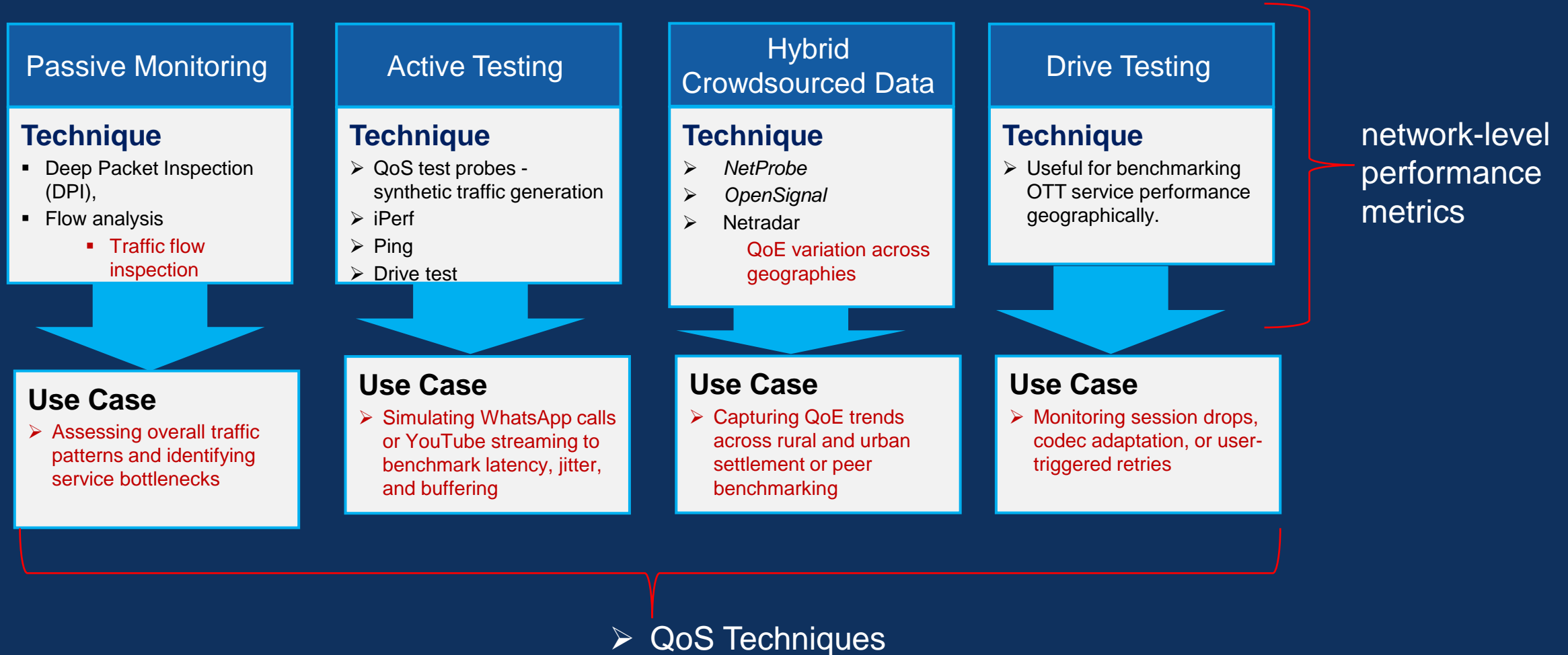
# Key Challenges in OTT Service Delivery



- To address CDN routing variability challenges
- Arslan et al proposed a **QoE-aware collaboration approach**
  - Joint optimization on both network and application sides - *basis of economic factors*



# OTT QoS/QoE Assessment Methods



# OTT QoS/QoE Assessment Methods

## Subjective Testing

### Technique

- **Mean Opinion Score (MOS)** surveys
  - field tests with user panels.

## Objective QoE Model Testing

### Technique

- Estimate MOS from QoS metrics.
  - ITU-T P.1203 (for video), VMAF (Netflix), PSNR, SSIM.

## Analytics from OTT Apps

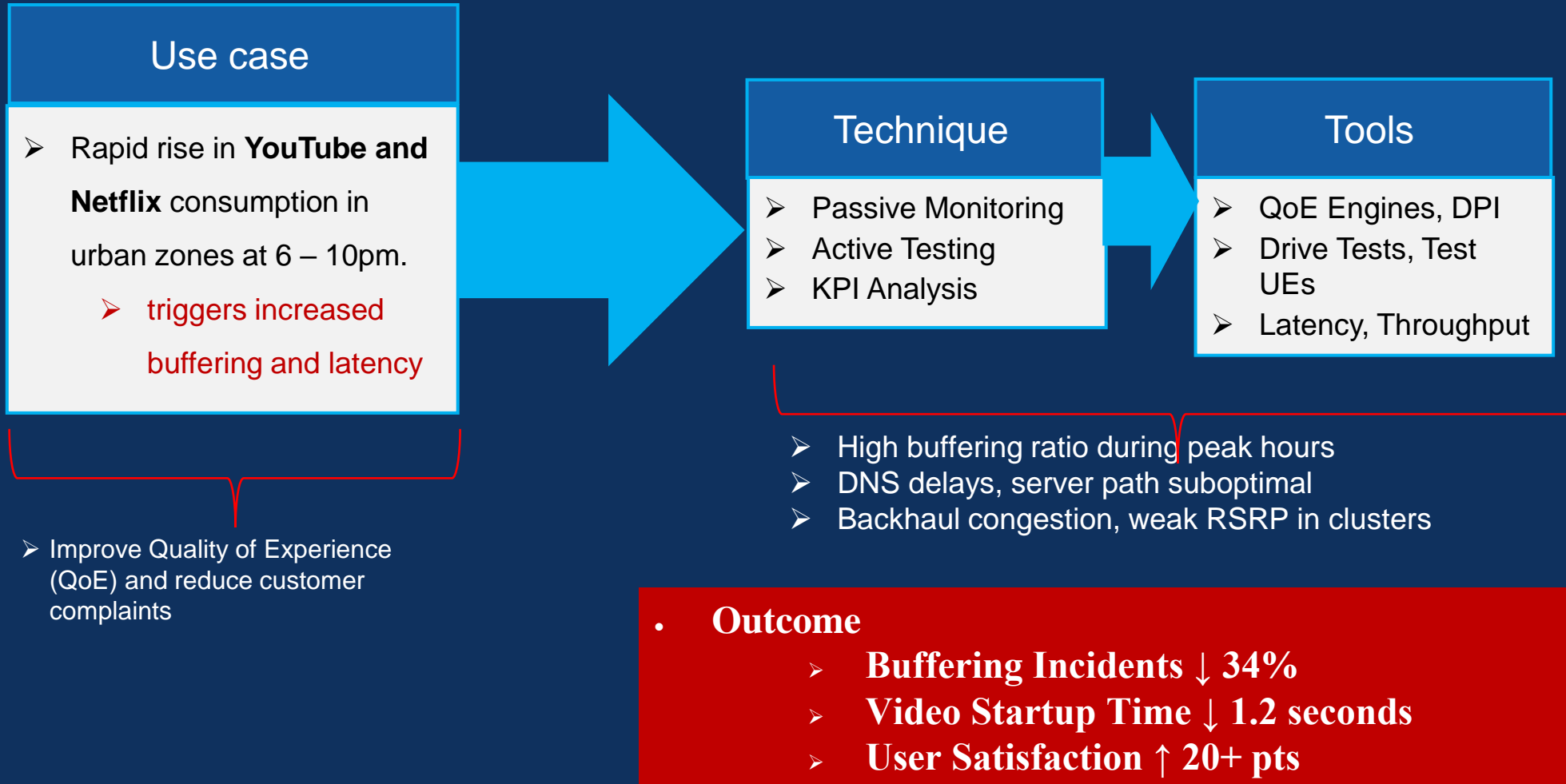
### Technique

- SDKs embedded in OTT applications.
  - **Metrics:** *playback errors, resolution changes, time to first frame.*

- 
- QoE Techniques

# Practical Insights

## Use Case: Enhancing OTT Service Quality in West Africa





# Lessons Learned

- MNO - OTT collaboration is essential
- QoE + QoS = full visibility
- MEC enhances OTT experience
- Monitor continuously, not occasionally
- Content localization drives bandwidth constrained areas

# Conclusion

- OTT ecosystem complexity requires cross-layer visibility
- Passive and active monitoring are complementary tools
- QoS & QoE assessment must be continuous and dynamic (align with evolving regulatory standards)
- Prioritize user-centric metrics that reflect perceived quality, not just technical performance.
- Clear regulatory framework that encourage transparent quality reporting, net neutrality compliance, and OTT–MNO collaboration

**THANK YOU**