

# Regional, SGs and MSs Proposals for ITU-T SGs Structuring “In Preparation for WTSA-16”

***Dr. Sherif Guinena***

*ITU-T SG2 Chairman*

*Ex. Vice President of NTRA, Egypt*

# Restructuring Proposals

- TSB Director proposed ideas on restructuring.
- Also proposed revision on frequency of SGs meetings schedule and purposes.
- Regions, MSs, as well as most SGs started to elaborate their preliminary views.
- Many of these views have been presented at the last TSAG meeting (18-22 July 2016).
- The change could be significant !

# ITU-T Structure: basic building blocks

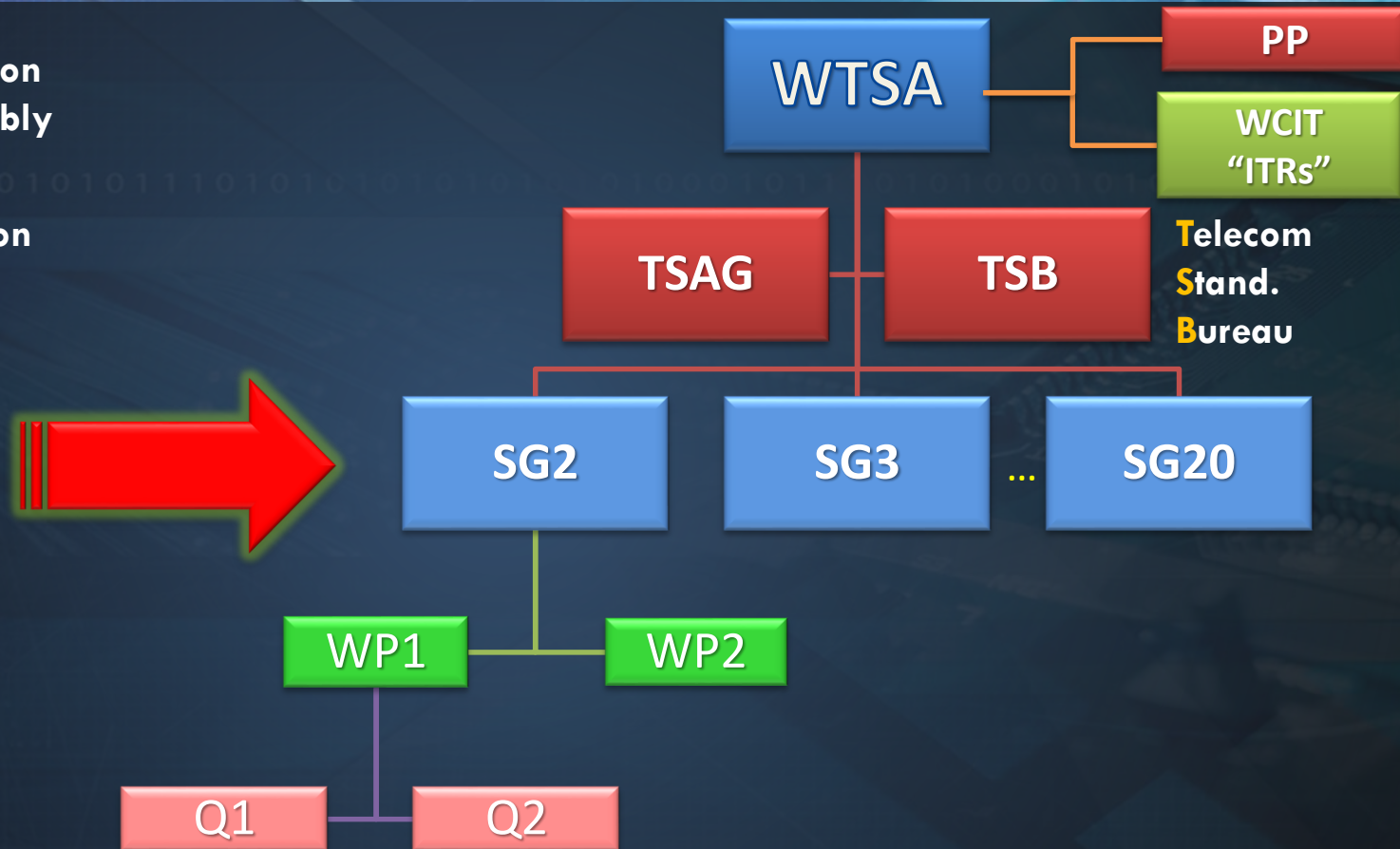
**World Telecommunication  
Standardization Assembly**

**Telecom Standardization  
Advisory Group**

• **Study Groups**

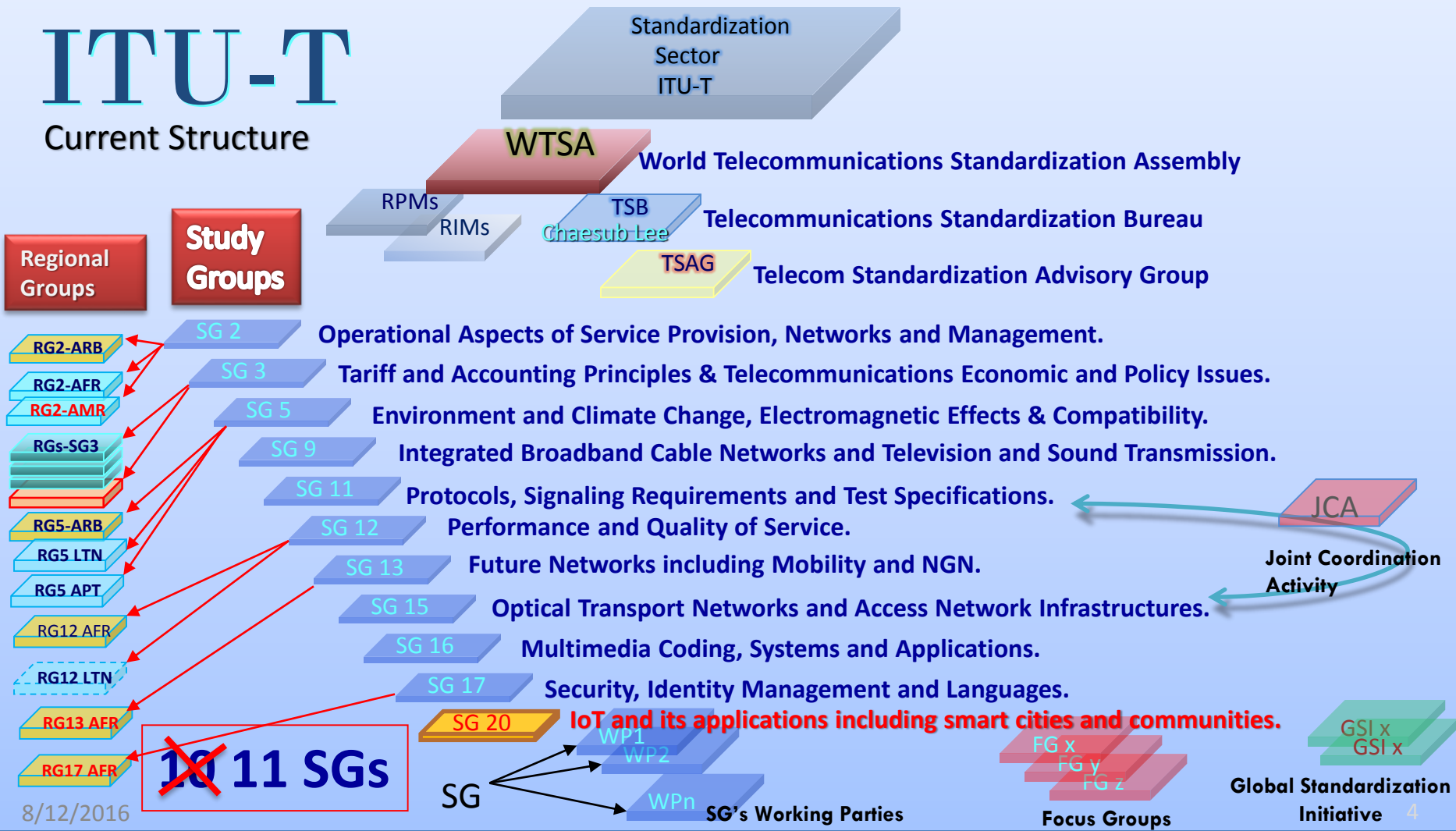
• **Working Parties**

• **Questions**



# ITU-T

## Current Structure





# TSB Thoughts:

## Four categories of current SGs

**SG 2**



**NNAI + Services**

**SG 17**

**Security**

**SG 20**

**IoT/SSC**

**SG 15**

**OPT/Access**

**SG 12**

**QoS**

**SG 16**

**MM**

**SG 13**

**NGN**

**SG 3**

**Economic/Policy**

**SG 5**

**Environment**

**SG 9**

**TV/CATV**

**SG 11**

**Signaling**

Operational  
(Policy and Regulations)

Common Used  
Functions

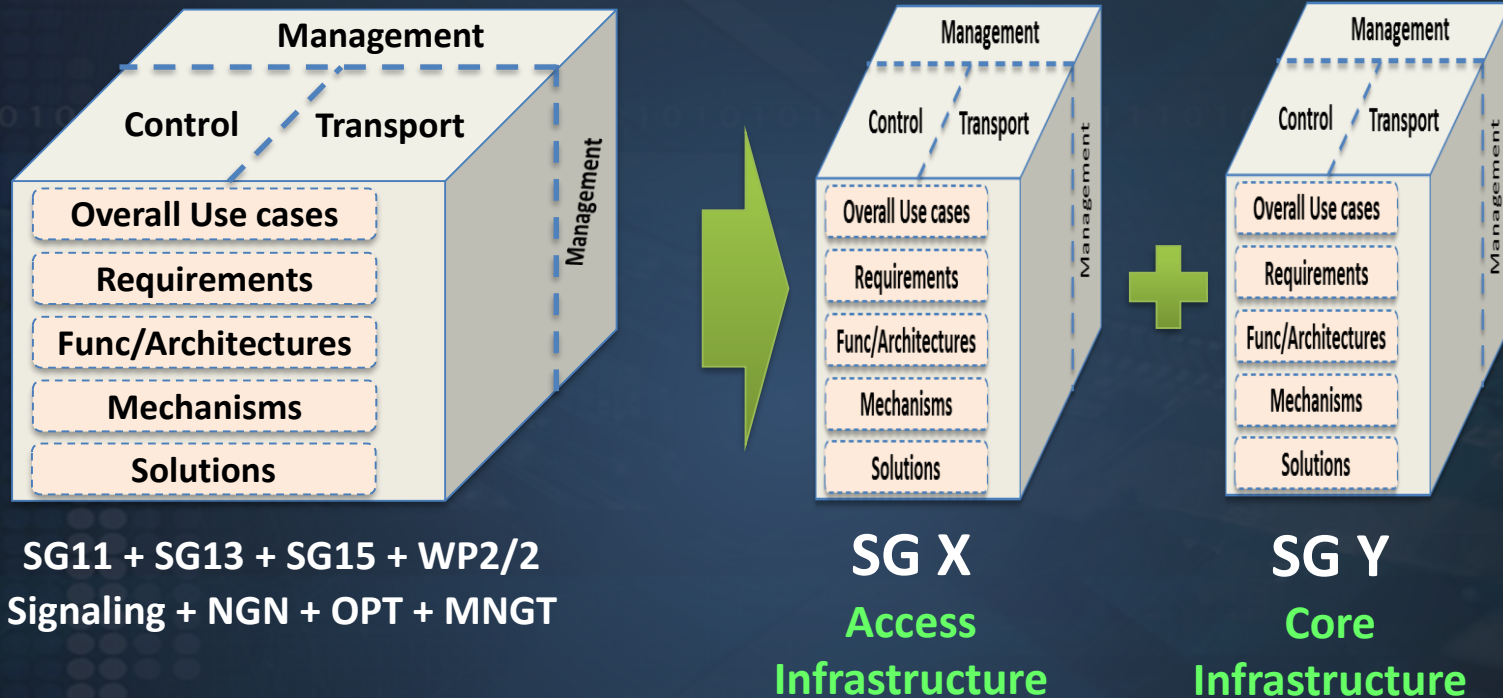
Service  
Application  
Oriented

Infrastructure

: Management (WP2 of SG2)

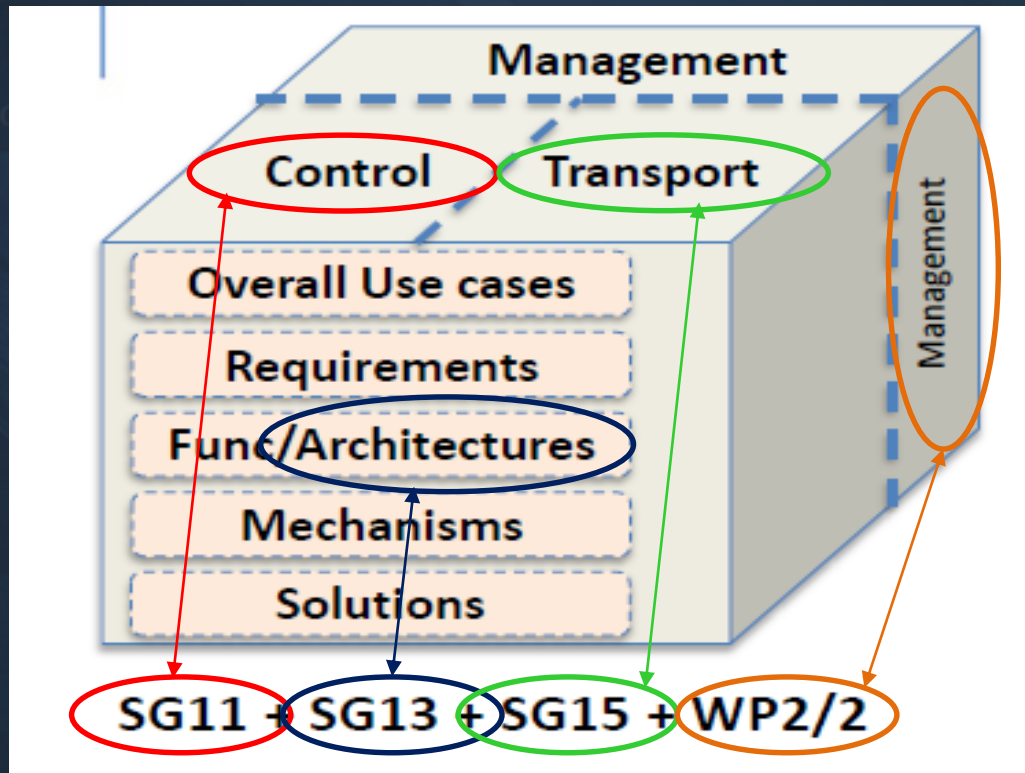
**\* Source: ITU-T TSB Director  
Presentations**

# SGs Grouping & Brake-out: Core and Access



- **Further issues:** C&I, Counterfeit, Outside Plant, Home networks

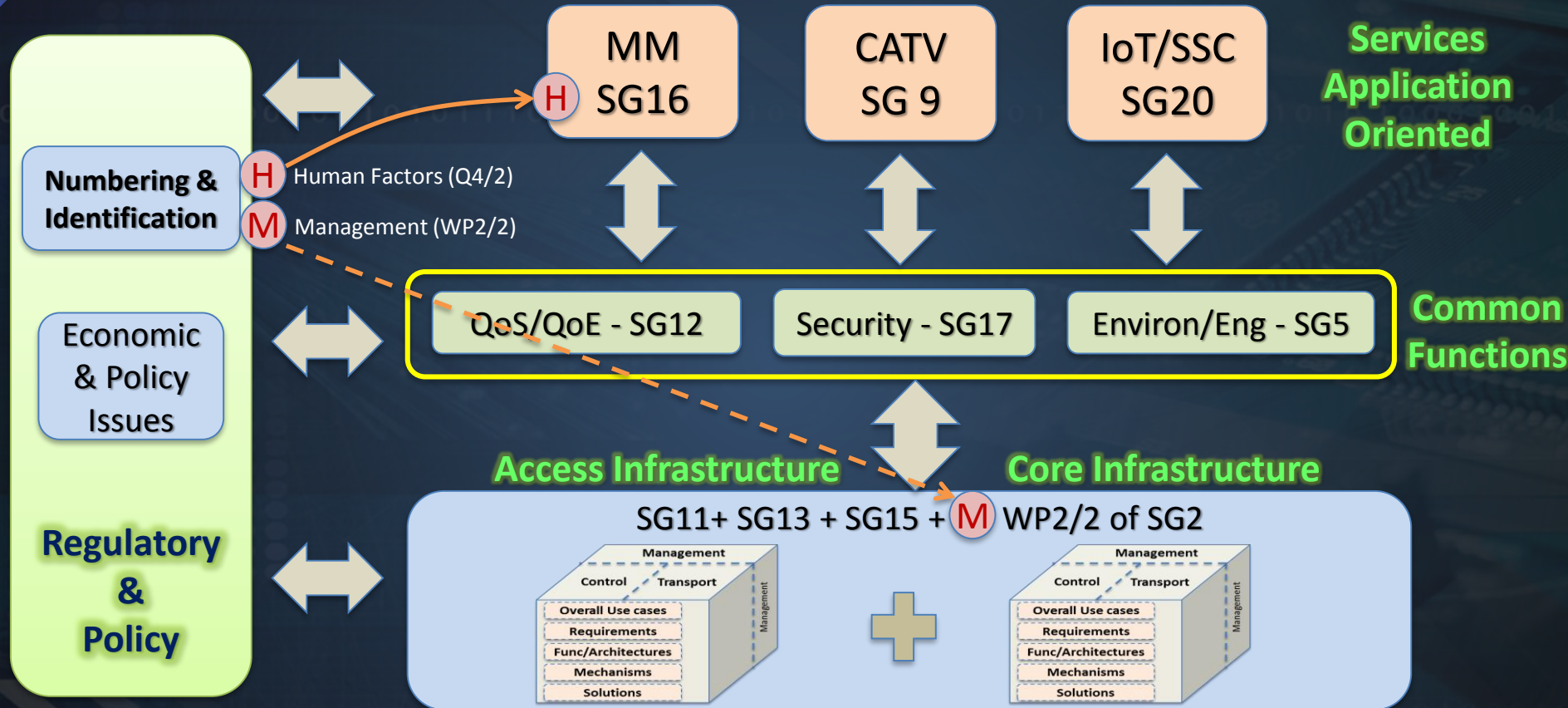
# Breakdown of Specialities



As analyzed by of SG15 Chairman



# Overall picture of the Proposed Structure





# Regional Positions: CITEL

- CITEL didn't conclude its proposal. Will be discussed in Bolivia 16-19 AUG 2016.
- Draft\* Inter-American Proposals: Drastic Change of some SGs Structure!
- **SG9 (CATV):**
  - **Delete SG9 and disperse its Questions**
  - Move Q9 Home Networks and Q11 Optical Access to SG15
  - Move Q12 AV Quality to SG12
  - Move all other Questions to the **ITU-R** SG6 (Broadcasting)!
- **SG11 (Signaling and Testing):** *(Brazil want to highlight Counterfeit if SG11 exists)*
  - **Delete SG11 and disperse its Questions**
  - Transfer lead role in signaling to SG13 (plus its Questions: 1 – 9, 11, 13 and 14)
  - Disperse Test Specification and C&I to all relevant SGs (no mention to Counterfeit !)
  - Move Q12 IoT Test Specifications into SG20
  - Move Q10 Benchmarking Measurements , Q15 Testing as a Service TaaS to SG12

# Regional Positions : APT

- **Adopted** by 21 MSs in its June 3<sup>rd</sup> meeting.
- No Change of SG Structure! only Questions may move.
- **SG9 (CATV):**
  - **Keep as is** (Experts will disperse if SG9 scattered to SGs).
  - No moving parts or merging of SG9 to SG15/SG16 (Telecom vs CATV: different sectors and regulations), will delay outcomes.
  - No moving of parts of SG9 to ITU-R (will lose TV broadcast on CATV)
- **SG11 (Signaling and Testing):**
  - Keep C&I, Counterfeit and Protocols in SG11.
  - 5G related Qs “may” be moved to SG13 after careful study.
- **SG2 (NNAI and Management):**
  - Move WP2/2 (Management) to SG13



# Regional Positions : CEPT<sub>1</sub>

- Semi Formal (UK, FR, Holland)
- Drastic Change of some SGs Structure and Mandates!
- **SG2 (NNAI, Services and Management):**
  - Move WP2/2 (Management) to SG13 (No Management lead role of SG13 ??typo??)
  - Move Q4 (Human Factors) to SG16
- **SG3 (Economic and Policy Issues):**
  - To Focus on “Tariff and Accounting Principles” for only “International Telecommunications”, including related economic and policy issues.
  - *(i.e. removing any national related issues from the mandates, or transferring it to the ITU-D sector or to the regional groups). Eco/pol only on the above scope.*
- **SG9 (CATV):**
  - **Delete SG9 and disperse its Questions**
  - Move Q12 “AV Quality” and Q2 “E-2-E QoS” to SG12.
  - Move the rest of Qs to SG15 (Optical Transport and Access).

# Regional Positions : CEPT<sub>2</sub>

## ■ SG11 (Signaling and Testing):

### ■ **Delete SG11 and disperse its Questions**

- Move signaling Questions to SG13 Move Q10 “Benchmarking Measurements”, Q11 “Protocol and network test specification” and Q15 “Testing as a Service TaaS” to SG12
- Move Q12 IoT Test Specifications to SG20
- Move other Questions (1 – 9, 13 and 14) to SG13 (signaling requirements and protocol for emerging networks; SDN and resource control; attachment and service networking)
- Transfer lead SG role in C&I to SG13.
- **Note:** *no mention of Counterfeit !!!*



# Regional Positions : RCC

- Two sets of proposals, will finalize in 11 SEP meeting
- No major change of Structure.
- Keep current structure.
- **SG20 (IoT & SSC):**
  - Agree on creation of SG20.
- **SG9 (CATV):**
  - **move SG9 as a working party under SG15 or SG16.**
- **SG11 (Protocols, C&I and Counterfeit):**
  - Keep SG11
  - (Note: having a Candidate to Chair SG11)

# Regional Positions : Arab<sub>1</sub>

- Agreed by correspondence, will finalize its position in the 3<sup>rd</sup> meeting, SEP.
- No major Change of SGs Structure.
- **SG2 (NNAI, Services and Management):**
  - Move Q4 (Human Factors) to SG16.
- **SG3 (Economic and Policy Issues):**
  - SG3 should be the Lead SG on policy and regulatory issues.
  - The Lead study group on economic issues including tariff and accounting principles.
- **SG9 (CATV):**
  - **move SG9 as a working party under SG16.**

# Regional Positions : Arab2

## ■ SG13 (FN):

- To focus on 5G.
- SG13 should intensify its role on the “management part of the network” as well as the “signaling”.
- New work on control plan should be moved to SG13 .

## ■ SG20 (IoT & SSC):

- Big Data studies should be transferred from SG13 to SG20.
- SG20 should be responsible about e-services/smart services in Smart Cities.



# Regional Positions : Africa<sub>1</sub>

- Tentative position, will be finalized in SEP meeting.
- Some Change in SGs Structure!
- **SG2 (NNAI and Management):**
  - “May” consider moving WP2 (management) to SG13
  - “May” consider moving Q4 (Human Factors) to SG16 as *distinct* question
  - Need for division of IoT ID work between SG2 , SG20 and SG17.
- **SG3 (Economic and Policy Issues):**
  - Enhance mandates.
- **SG9 (CATV):**
  - “May” Delete SG9 and move its Questions to either SG15 or SG16.



## Regional Positions : Africa2

### ■ SG11 (Signaling and Testing):

- Keep SG11 especially C&I, Counterfeit.
- Collocate and enhance meetings with SG13.
- 5G related SG11 Questions on Protocols “may” be moved to SG13.
- Establishing of SG11RG-AFR, especially for C&I and Counterfeit.

# Comments on the Regional Proposals

# Comments regarding SG2

- Moving of WP2 (Management) will make SG2 a focused SG on NNAI, Routing and Services.
- There was very good collaboration between SG2 and SG13 on Management on CC (e.g. JRG-CCM “Joint Rapporteur Group on Cloud Computing Management”). Rationale for moving WP2/2 need some special consideration.
- SG2 is the lead SG on **NNAI** (Numbering, Naming, Addressing and **IDENTIFICATION**) This may apply also to IoT Identification.
- IoT Identification is an important issues, and SG2 structure and Questions should be enhanced to take important role in these studies, with collaboration as mentioned before.
- Expected enhancement on Services Definitions (e.g. DR&NRR), and Routing (NP and IMS-IMS Interworking under IP environment).



# Comments regarding SG3 <sup>1</sup>

- SG3 has made significant achievement in addressing hot issues of interest to developing countries (in particular Africa).
- There are regional proposals to take-out some issues “Questions” and “mandates” currently under SG3 (or Qs proposed for the next study period) with claim that they are national matters, and they are already addressed in the development sector (*noting that most of these has economic, policy or regulatory aspects*); while DCs see that these issues are of great importance to them. Such proposals are:
  - Limiting SG3 scope to only “Tariff and Accounting”, and
  - Limiting scope of SG3 on “Tariff and Accounting” to only “International Telecom issues”.
  - Limiting “Policy and Regulatory Issues” to only the limited scope of the two bullets above.
  - Thus, excluding “emerging hot topics” from the SG3 mandates claiming that it is national matters (*see next slide*).
- **Comment:** *There is now a strong correlation and interaction between national and international services provisioning exercised by national and multinational Operating Agencies. The Economic, Policy and Regulatory impact on Developing Countries and their national operating agencies and on national interests, should be studied in SG3 to develop appropriate Recommendations.*



# Comments regarding SG3 2

- Some Region is studying “Excluding” the following below issues, claiming that:
  - They are “related” to national matters.
  - It may be legitimate for “Regional Study Groups” to discuss these issues, being properly the “responsibility of the Development Sector”:
    - Over-the-top (OTT) communications with a view to developing international standards on OTT messaging, telephony and streaming services.
    - Digital financial services.
    - Universal service.
    - Definition of single market power.
    - Machine-to machine communications.
    - Economic impact of move from IPv6 to IP4.
    - Shared use of spectrum and telecoms structure for lowering telecoms tariffs.
- *(Note : that ITU-D do not produce Recommendations (Standards)).*

# Comments regarding SG3 <sup>3</sup>

- Summary of current proposals:
  - CEPT : Maintain SG3 but limit its scope and its mandates
  - Africa : “*Tentative Proposal*” : Maintain SG3 mandates in Resolution 2, including SG3 new Questions proposed in its last meeting.
  - ARAB : Maintain and/or enhance SG3 mandates in Resolution 2.
  - Other Regions: Maintain SG3, No Change so far of its mandates and Questions.
  - Russia: Proposes a new Working Party in SG3 on “Policy and Regulatory issues”.
- *Remark: SG2 and SG3 are the only ITU-T SGs that have Policy and Regulatory Aspects, which are important to Developing Countries.*

# Comments : SG9

- SG9 (CATV) is a focused (vertical) SG, most Regions support its merger with other GSs (Except APT who have strong presence and interest in SG9).
- The proposal to move part of SG9 to Radio Sector will disperse experts, and lessen ITU-T visibility.
- CATV (Cable TV) is not widely implemented DCs. Gives DC freedom to decide on the future of SG9.
- APT (Asia Pacific countries (e.g. Far East)) has active participation in this SG. This may be taken into consideration by DCs, before considering the scattering of SG9 !
- *Note: SG9 wants to keep itself independent, as being a vertical SG (self contained).*



# Comments : SG11

- SG11 is an important SG regarding:
  - Signaling and Protocols.
  - Testing (including Conformance and Interoperability Testing, C&I / CIT).
  - Counterfeit.
- Merging protocols only into SG13 may enhance 5G/IMT2020 activities, but may also diverge SG11 Experts who are also Experts in Testing/C&I. It is questionable if this splitting of activities demotes (weakens) SG11 effectiveness.
- May lose potential of Conformance & Interop (C&I) and Counterfeit, if distributed to many Study Groups, there will be no lead SG on C&I/Counterfeit !
- Current colocated meeting between SG11 and SG13 is working well. Studies on IMT2020/5G may require more close cooperation.
- *Note: big divergence of Regional and Individual MSs views.*



# Comments : SG20

- SG20 is an important new SG regarding smart cities and communities (SCC); related issues should be transferred to SG20 from other SGs for more effectiveness.
- IoT is a stand alone topic and also a facilitator to SCC. Hence SG20 should be the lead SG for IoT.
- Collaboration in IoT Identification between SG20 and SG2, SG17, SG11 is important, but differentiation of responsibilities and mandates should be clear among areas such as:
  - IoT Identifiers.
  - IoT Identity Management (IdM).
  - IoT IdM security.
  - IoT Protocols and Testing.
- SG16 is not willing to move e.smart.services to SG20.
- SG20 is opposing moving Big-Data to SG20.

# Study Groups own Position

# ITU-T SGs positions : SG2 & SG3

## ■ SG2:

- New Questions and Mandates (WTSA Res.2) delivered to TSAG [TD442](#)
- Split position among SG2 on moving WP2 to SG13.
- No much objection on moving Q4/2 to SG16, but as a distinct Question.

## ■ SG3:

- New Questions and Mandates (WTSA Res.2) delivered to TSAG [TD514](#)
- No formal position yet from SG3 on structuring.



# ITU-T SGs positions : SG5 & SG9

## ■ SG5:

- New Questions and Mandates (WTSA Res.2) delivered to TSAG [TD503](#)  
No change in Questions except:
  - All the work items relating to Smart Sustainable Cities from SG5 will be transferred to SG20 for its consideration.
- No formal position yet from SG5 on structuring.

## ■ SG9 :

- New Questions and Mandates (WTSA Res.2) delivered to TSAG. [TD509](#)
- SG9 see it is vertical, No dissolving of SG9 and keep it an independent SG.

# ITU-T SGs positions : SG11

## ■ SG11 : **KEEP as is !**

- Comments from SG11 *(to be created in the SG11 meeting)*:
- On Merger of SG11, SG13 , SG15, WP2/2, in two SGs (Infrastructure, Access):
  - Experts are different.
  - SG11 and SG13 have joint meeting for several relevant Questions.
  - No justification for joint agenda with SG15 or WP2/2.
  - Signaling requirement cannot be divided into Infrastructure and Access.
  - Hence no good justification for Merger with SG13 nor with SG15 & WP2/2 !
- Conformance and Interoperability C&I and Counterfeit:
  - C&I and Test Specifications are led by protocol and testing experts in SG11.
  - Good visibility of C&I in SG11, will be lost if scattered in many SGs.
  - C&I and Counterfeit important for Developing Countries, well supports by Regional Groups (current and planned).
  - Hence no need to loose the momentum and visibility of C&I and Counterfeit.

# ITU-T SGs positions : SG12

## ■ SG12 :

- New Questions and Mandates (WTSA Res.2) delivered to TSAG [TD 524](#).
- Moving Q2/9 and Q12/9 (Video/MM QoE assessment) into SG12 .



# ITU-T SGs positions : SG13

## ■ SG13:

- New Questions and Mandates (WTSA Res.2) delivered to TSAG [WPR 02](#).
- SG13 position on structuring [TD 571](#):
  - **Moving WP2/2 from SG2 to SG13:** SG13 is neutral in moving or not, has no problem to keep WP2/2 in SG2, collaboration through JRG-CCM (Cloud) is very successful. Same results can be achieved and mechanism can be extended to 5G;
  - **Merge with SG15:** Work of SG13 has almost nothing in common with the corresponding topic areas in SG15. The separation of layers allows this work to proceed independently; few common experts and very few liaisons. Collaboration in IMT2020 but no move of Questions.
  - **Merge with SG11:** No need: SG11 and SG13 showed excellent co-operation on topics of common interest through colocated meetings.

# ITU-T SGs positions : SG15

## ■ SG15:

- New Questions and Mandates (WTSA Res.2) delivered to TSAG [TD478](#)
- Comments on Structuring delivered to TSAG [TD479](#)
  - Merger with SG11, SG13, WP2/2 not justified.
  - Almost no common participants and very little communication between these groups and SG15.
  - The work of WP2/2, SG11, and SG13 have almost no relationship to the work of SG15
  - Has also no direct relation or justification for moving questions to or from SG2, SG3, SG5, SG9, SG12, SG16, SG17 and SG20.
  - Major blocks of work currently carried out in SG15 should not be separated into other Study Groups.
  - SG2, SG5, SG9, and SG12 relationships exist with SG15. Movement of work items, mature Recommendation maintenance, or even study questions might be considered to improve the efficiency of the work.



# ITU-T SGs positions : SG16 , SG17

## ■ SG16:

- New Questions and Mandates (WTSA Res.2) delivered to TSAG [TD510](#).
- Comments on Structuring contained in the above TSAG TD.
  - Lead study group on e-services, such as e-government, e-health and e-education
  - No support for collocated meeting with SG9.

## ■ SG17:

- New Questions and Mandates (WTSA Res.2) delivered to TSAG [TD499](#)
- Comments on Structuring delivered to TSAG [TD494](#)
  - SG17 agree to be identified as one of the three “**common function**” study groups ideas by the TSB Director.
  - Having a critical mass of security experts in one group is advantageous.
- Split of work on IoT security between SG17 and SG20 agreed in last TSAG.



# ITU-T SGs positions : SG20

## ■ SG20:

- New Questions and Mandates (WTSA Res.2) to TSAG not yet updated, (current version [TD368](#) ).
- No formal position yet from SG20 on structuring.
- lead study group on (1) IoT and its applications; (2) Smart cities and communities.
- Move big data studies to SG20 (non formal position)
- Transfer e-smart-services to SG20 (non formal position)

# Position of Individual MSs (Direct Contributions)

# Individual Member States Positions

- USA/Canada: Dissolve SG11 to SGs 12, 13, 20
- USA:
  - Dissolve SG11 SG13, 12, 20.
  - Disperse C&I and Counterfeit to all relevant SGs.
  - Dissolve SG9 to SGs 12, 15, ITU-R SG6
- Brazil: Keep SG11
- Russia:
  - Keep SG11.
  - Establish a new WP in SG3 on Policy issues.
  - Dissolve SG9 to SG15 or SG16.
  - Other SGs under discussion.



# Individual Member States Positions

## ■ Japan:

- Keep current SGs structure (incl. SG2, SG9, SG11)
  - Especially keep SG9.

## ■ China:

- Keep WP2/2 (Management) in SG2 (No move to SG13).
- Keep SG11.

# Structuring Proposals

Group	Proposal	Support
TSAG, RevCom	Dissolve RevCom, SUP Res.82 and reinforcing the role of TSAG in Res.22	WTSA-16 <a href="#">Doc 45</a> Add.2 (CEPT); <a href="#">C.110</a> (Japan)
	Dissolve RevCom, SUP Res.82	<a href="#">TD 565</a> (RevCom); <a href="#">C.87</a> (Canada), <a href="#">TD 586</a> (RCC), <a href="#">TD 600</a> (ARB), <a href="#">TD 598</a> (ATU)
SG2	NOC	WP2/2 remain in SG2: <a href="#">C.98</a> (China); <a href="#">TD 442</a> (SG2), <a href="#">TD 598</a> (ATU)], SG2 assessment on WP2/2: <a href="#">TD 533</a>
	Transfer	
	t1) Q4/2 (human factors) to SG16	<a href="#">C.120</a> (Germany, France, Sweden), <a href="#">TD 584</a> (CEPT), <a href="#">C.93+TD 585</a> (APT), <a href="#">TD 600</a> (ARB) SG2 assessment: <a href="#">TD 533</a>
	t1-bis) Q4/2 (human factors) to SG16 as a separate Question	<a href="#">TD 598</a> (ATU)] SG2 assessment on Q4/2: <a href="#">TD 533</a>
	t2) WP2/2 (telecom management and network and service operations) to SG13	<a href="#">C.120</a> (Germany, France, Sweden), <a href="#">TD 584</a> (CEPT), <a href="#">C.93+TD 585</a> (APT), <a href="#">TD 598</a> (ATU)] SG2 assessment on WP2/2: <a href="#">TD 533</a> <sup>2</sup>
SG3	NOC	<a href="#">C.120</a> (Germany, France, Sweden), <a href="#">TD 584</a> (CEPT), <a href="#">TD 514</a> (SG3)
	Create WP on regulatory aspects	<a href="#">C.99</a> (Russia), <a href="#">TD 586</a> (RCC)
SG5	NOC	<a href="#">C.120</a> (Germany, France, Sweden), <a href="#">TD 584</a> (CEPT), <a href="#">TD 586</a> (RCC)

# Structuring Proposals (cont'd)

Group	Proposal	Support
SG9	Retain:	<a href="#">C.96</a> (Japan), <a href="#">C.93+TD 585</a> (APT), <a href="#">TD 515</a> (SG9), <a href="#">TD 598</a> (ATU)]
	Transfer:	
	t1) Move Qs 2/9 and 12/9 (video quality) to SG12 (NB – subset of d2)	<a href="#">TD 519</a> (SG12)
	Disband:	
	d1) Single WP in SG15 or SG16	<a href="#">C.99</a> (Russia), <a href="#">TD 586</a> (RCC), <a href="#">TD 598</a> (ATU)]
	d1-bis) Single WP in SG16	<a href="#">TD 600</a> (ARB)
	d2) Transfer of Q2/9 (end-to-end QoS) and Q12/9 (audiovisual quality) to SG12 and merge the rest with SG15	<a href="#">C.120</a> (Germany, France, Sweden), <a href="#">TD 584</a> (CEPT)
	d3) Move home networking and optical access to SG15, Q12/9 (video quality) to SG12 and remainder to ITU-R SG6 (Broadcasting)	<a href="#">C.109</a> (USA)



# Structuring Proposals (cont'd)

Group	Proposal	Support
SG11	Retain:	<a href="#">C.99</a> (Russia), <a href="#">C.97R1</a> (BR, CO), <a href="#">TD 549</a> (SG11), <a href="#">C.98</a> (China), <a href="#">TD 586</a> (RCC), <a href="#">C.93</a> + <a href="#">TD 585</a> (APT), <a href="#">C.96</a> (Japan), <a href="#">TD 598</a> (ATU)
	Transfer:	
	t1) Move Q10/11 and Q15/11 to SG12 (NB-same as part of d1 and d2)	<a href="#">TD 521</a> (SG12) SG11 assessment: <a href="#">TD 553</a>
	Disband:	
	d1) Move of Q10, 11 & 15/11 (testing) to SG12; Q12/11 (IoT testing) to SG20; and other Questions to SG13	<a href="#">C.120</a> (Germany, France, Sweden), <a href="#">TD 584</a> (CEPT)
	d2) Move Q10/11 and Q15/11 to SG12; Q12/11 to SG20; remaining Qs into SG13	<a href="#">C.107</a> (USA)
SG12	SG9 t1) Move Qs 2/9 and 12/9 (video quality) to SG12 (NB – subset of SG9 d2)	<a href="#">TD 519</a> (SG12)
	Part of SG9 d2: <u>Transfer of Q2/9 (end-to-end QoS) and Q12/9 (audiovisual quality) to SG12</u> and merge the rest with SG15	<a href="#">C.120</a> (Germany, France, Sweden), <a href="#">TD 584</a> (CEPT)
	Part of SG9 d3: Move home networking and optical access to SG15, <u>Q12/9 (video quality) to SG12</u> and remainder to ITU-R SG6 (Broadcasting)	<a href="#">C.109</a> (USA)
	SG11 t1: Move Q10/11 and Q15/11 to SG12 (NB-same as part of d1 and d2)	<a href="#">TD 521</a> (SG12)
	Part of SG11 d1: <u>Move of Q10, 11 &amp; 15/11 (testing) to SG12</u> ; Q12/11 (IoT testing) to SG20; and other Questions to SG13	<a href="#">C.120</a> (Germany, France, Sweden), <a href="#">TD 584</a> (CEPT)
	Part of SG11 d2: <u>Move Q10/11 and Q15/11 to SG12</u> ; Q12/11 to SG20; remaining Qs into SG13	<a href="#">C.107</a> (USA)
	SG16 t1: Transfer G.190-series from SG16	<a href="#">TD 508</a> (SG16) & <a href="#">TD518</a> (SG12)

# Structuring Proposals (cont'd)

Group	Proposal	Support
SG13	Move big data studies to SG20	<a href="#">TD 600</a> (ARB), <a href="#">TD 598</a> (ATU)]
	SG2 t2: WP2/2 (telecom management and network and service operations) to SG13	<a href="#">C.120</a> (Germany, France, Sweden), <a href="#">TD 584</a> (CEPT), <a href="#">C.93</a> + <a href="#">TD 585</a> (APT)
	Part of SG11 d1: Move of Q10, 11 & 15/11 (testing) to SG12; Q12/11 (IoT testing) to SG20; <u>and other Questions to SG13</u>	<a href="#">C.120</a> (Germany, France, Sweden), <a href="#">TD 584</a> (CEPT)
	Part of SG11 d2: Move Q10/11 and Q15/11 to SG12; Q12/11 to SG20; <u>remaining Qs into SG13</u>	<a href="#">C.107</a> (USA)
	SG9 d1: Move SG9 as a single WP in SG15 or SG16	<a href="#">TD 586</a> (RCC)
SG15	Part of SG9 d2: Transfer of Q2/9 (end-to-end QoS) and Q12/9 (audiovisual quality) to SG12 and <u>merge the rest (video transport, cable related terminals and applications) with SG15.</u>	<a href="#">C.120</a> (Germany, France, Sweden), <a href="#">TD 584</a> (CEPT)
	Part of SG9 d3: Move home networking and optical access to SG15, Q12/9 (video quality) to SG12 and remainder to ITU-R SG6 (Broadcasting)	<a href="#">C.109</a> (USA)
	Transfer	

# Structuring Proposals (cont'd)

Group	Proposal	Support
SG16	t1) Transfer G.190-series to SG12	<a href="#">TD 508</a> (SG16) & <a href="#">TD518</a> (SG12)
	t2) Transfer e-smart-services to SG20	<a href="#">[TD 598 (ATU)]</a>
	SG2 t1: Q4/2 (human factors) to SG16;	<a href="#">C.120</a> (Germany, France, Sweden), <a href="#">TD 584</a> (CEPT), <a href="#">C.93+TD 585</a> (APT), <a href="#">TD 600</a> (ARB);
	SG2 t1-bis: Q4/2 to SG16 as a separate Question	<a href="#">[TD 598 (ATU)]</a>
	SG9 d1: Move SG9 as a single WP in SG15 or SG16	<a href="#">TD 586</a> (RCC)
	SG9 d1-bis: Move SG9 as a single WP in SG16	<a href="#">TD 600</a> (ARB)
SG17	NOC	<a href="#">C.120</a> (Germany, France, Sweden), <a href="#">TD 584</a> (CEPT), <a href="#">TD 586</a> (RCC)
SG20	Part of SG11 d1: Move of Q10, 11 & 15/11 (testing) to SG12; <a href="#">Q12/11</a> (IoT testing) to SG20; and other Questions to SG13	<a href="#">C.120</a> (Germany, France, Sweden), <a href="#">TD 584</a> (CEPT)
	SG13 t1: Move big data studies to SG20	<a href="#">TD 600</a> (ARB), <a href="#">[TD 598 (ATU)]</a>
	SG16 t2: Transfer e-smart-services to SG20	<a href="#">[TD 598 (ATU)]</a>



# Thank You!



د. شريف جنينة

Dr.Guinena@NTRA.gov.eg

Dr.Sherif@Guinena.net