



Organizational ethics of AI integration in Health Institutions

Melissa McCradden

John and Melinda Thompson Director of AI in Medicine (Integration Lead), SickKids

Bioethicist, Dept of Bioethics, SickKids

Associate Scientist, Genetics & Genome Biology

Organizational ethics

From values to policy



Leverage artificial intelligence integrating big data spanning the genetic code to the postal code

Fuel discovery and accelerate translation to groundbreaking clinical trials and care

Ensure every patient has the opportunity to engage in and the right to benefit from research

COMPASSION

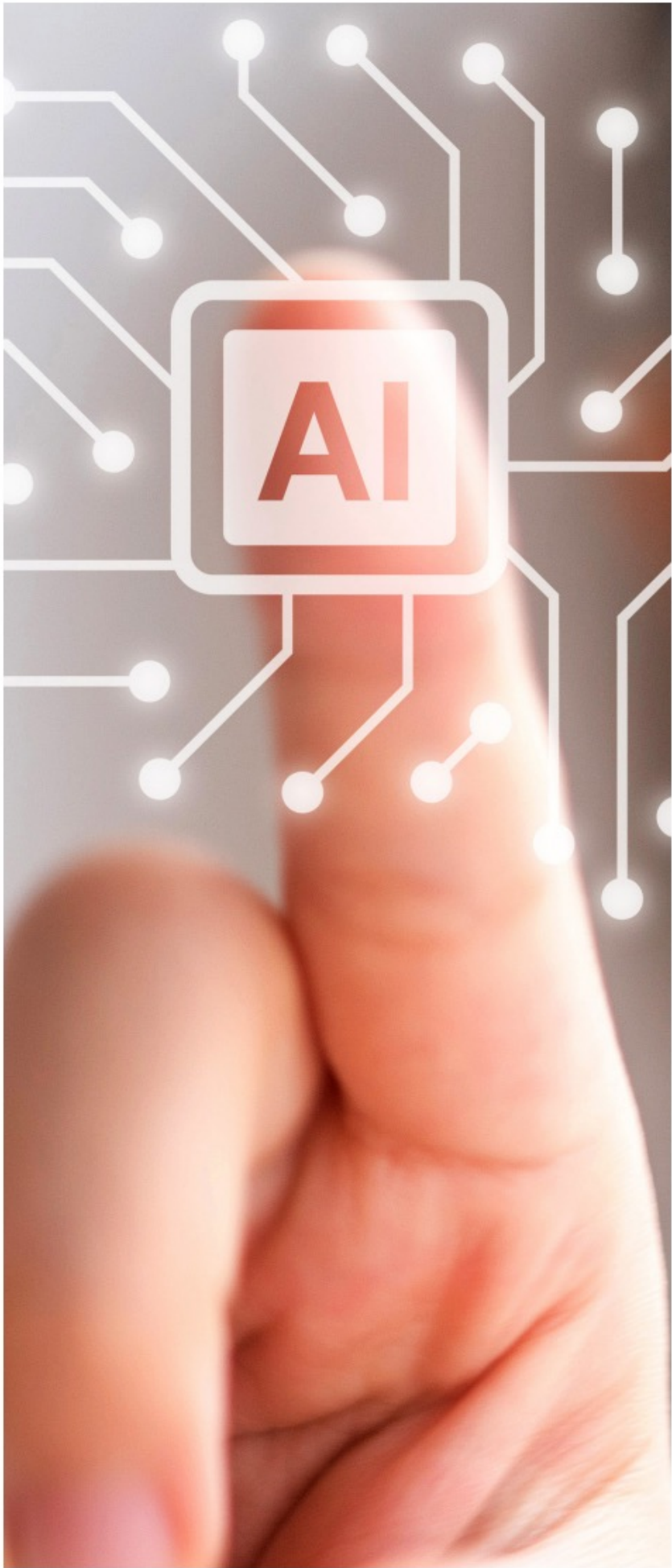
INTEGRITY

COLLABORATION

INCLUSION

INNOVATION

EXCELLENCE





Justice, Equity, Fairness, & Anti-Bias (JustEFAB)

Clinical Integration Policy for Data Science



“How do I know that’s
safe for *my* kid?”

- *Question from a Mom*

“So, what are your standards and stuff for AI?”

“How do you decide if it works and when it’s
good enough to use?”

- *Questions from Children’s Council members*



Clinical integration at SickKids

Data Access and Model Development

Preclinical Testing (silent trial)

Prospective Clinical Evaluation

Design thinking

20 Questions for good collaborations

Data, fit for purpose?

Data Access protocols (REB)

Data Trust Committee

Algorithmic validation

Analytic plan (REB)

Human factors, implementation science,
cognitive load evaluation

Infrastructure: feasibility, readiness

EHR integration planning

Change management

Child and Youth Advisory Council*

Traditional research ethics processes

Human factors, implementation science,
cognitive load evaluation

Reporting guidelines as templates

Preparation and conceptualization

Data inclusivity

Algorithmic fairness evaluations

Ethical decision-making (plan)

Ethical decision-making (evaluate)

Analytic plan for fairness

EDI principles for human factors

Justice (core research ethics principle)

Inclusive recruitment

Comparison to status quo

Organizational ethics

Living our values

- Efficient use of resources (people, computational systems, consultation)
- Consistent and clear process, awareness of the steps to integrate
- Standpoint theory as an organizing framework = science is better when diverse disciplinary lenses and lived experiences advise on its conduct
- Capacity-building for our people (clinicians, scientists, youth advisory members)
- Ethics is embedded across the entire integration pipeline



Thank you!

SickKids[®]

AIM 
AI in Medicine for Kids

