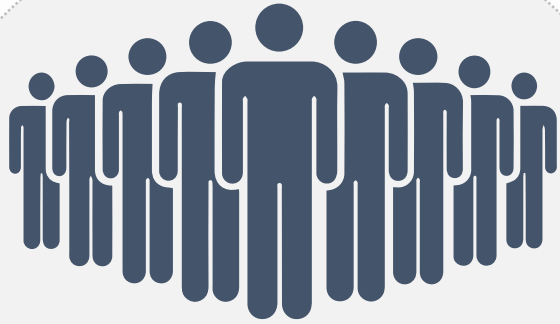




unima

Fast and low-cost diagnostic sensors for real-time surveillance

The Problem



3 billion

People without access to a
timely diagnostic

Current diagnostic technologies not
suited for universal coverage



High Cost: **\$10 - \$100**



Labs with **expensive**
equipment required



Specialized technicians
required

Our Solution

FindTM : fast and low-cost sensors for remote diagnostics

Easy

No training, no
lab equipment

Fast

15 minutes

Affordable

\$1 per test



Step 1

A drop of sample
from patient



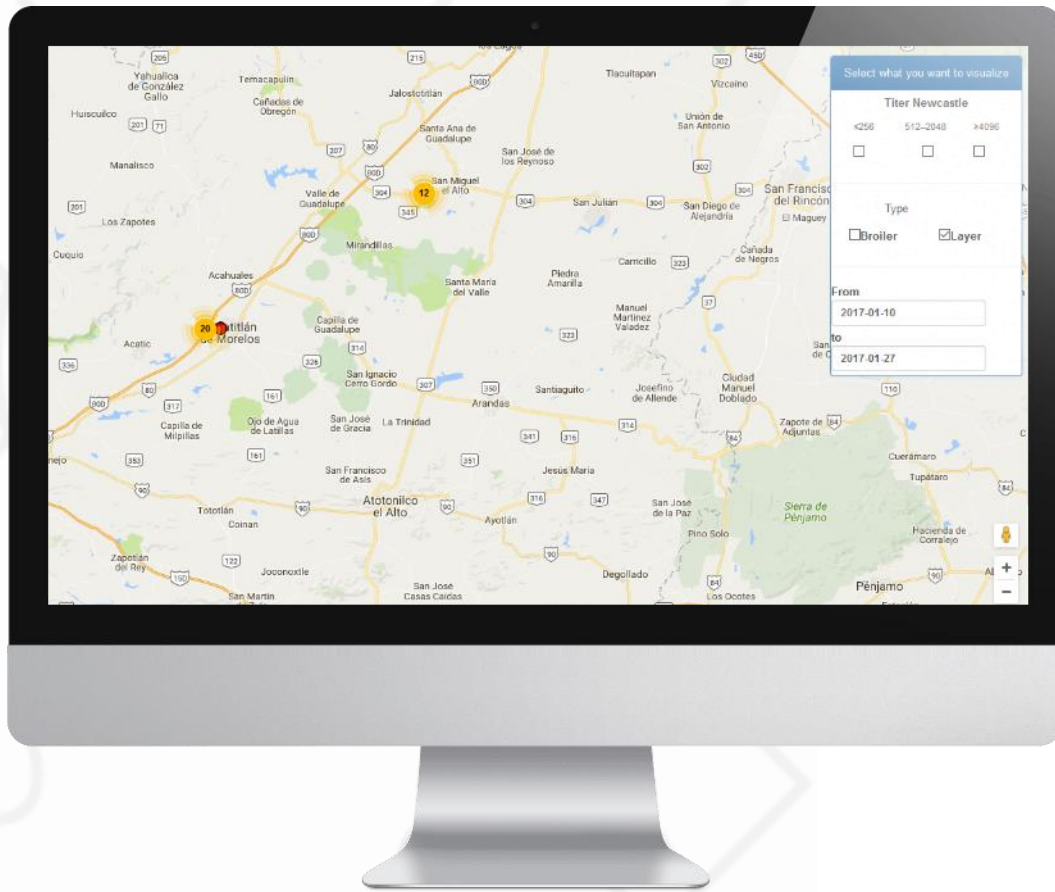
Step 2

Put sample in
testing device



Step 3

Take a picture
with a smartphone



Step 4

Result sent to cloud server in real time



Our Technology

Platform technology to develop **tailored sensors** for diagnostics and real time disease surveillance

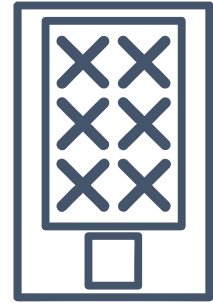
1

Chimeric recombinant shark antibodies



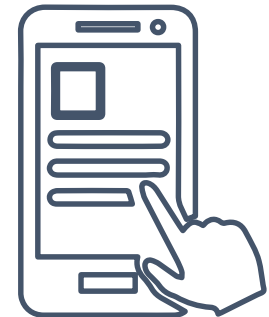
2

Paper microfluidics



3

Image processing and AI algorithms

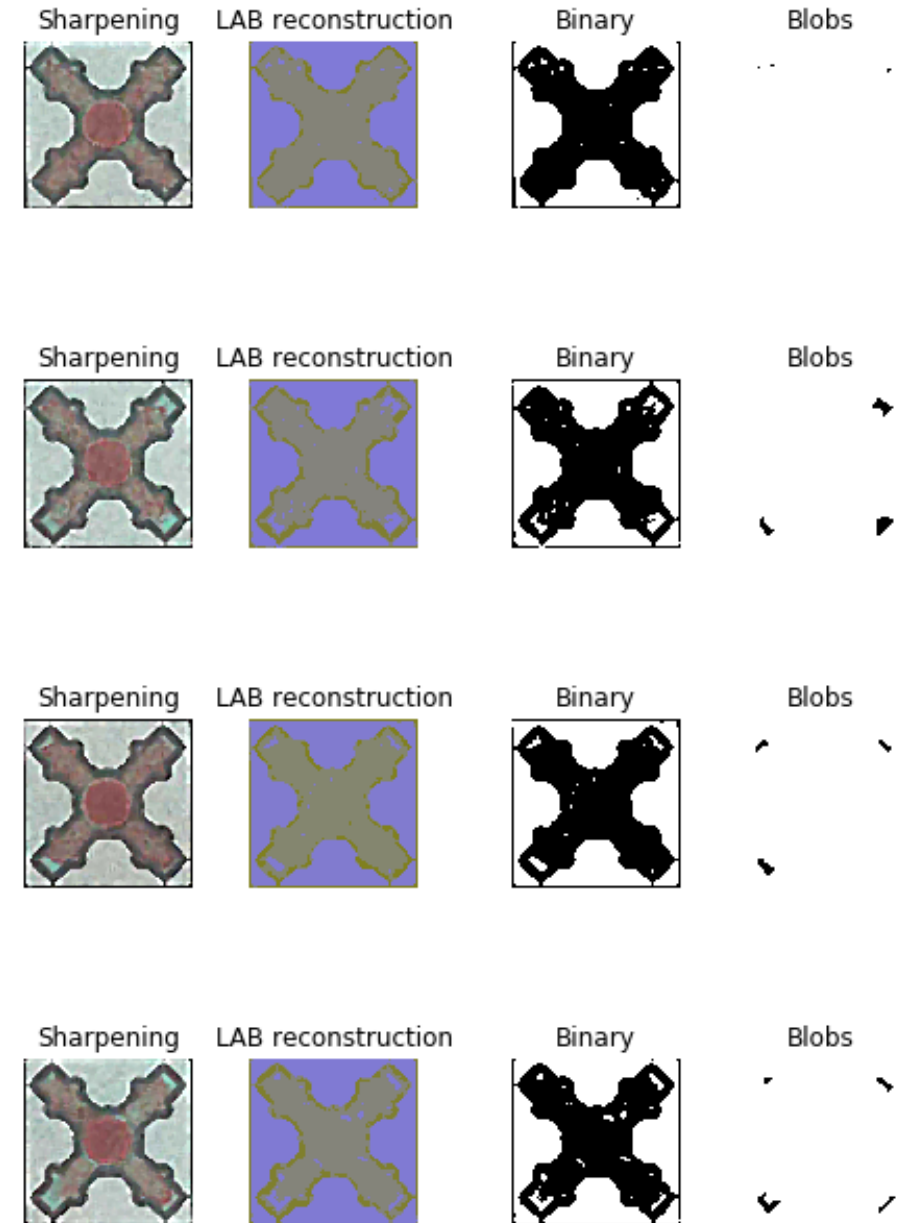
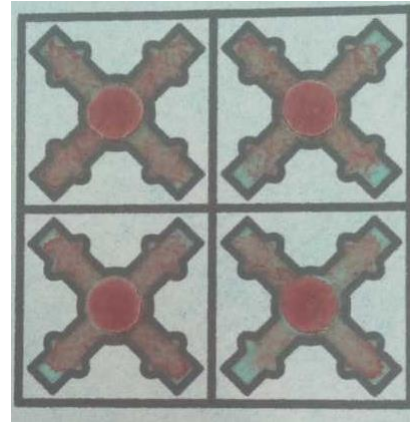


Our Technology

Immune reaction generates
visual patterns in paper device



Our Technology



Our Technology

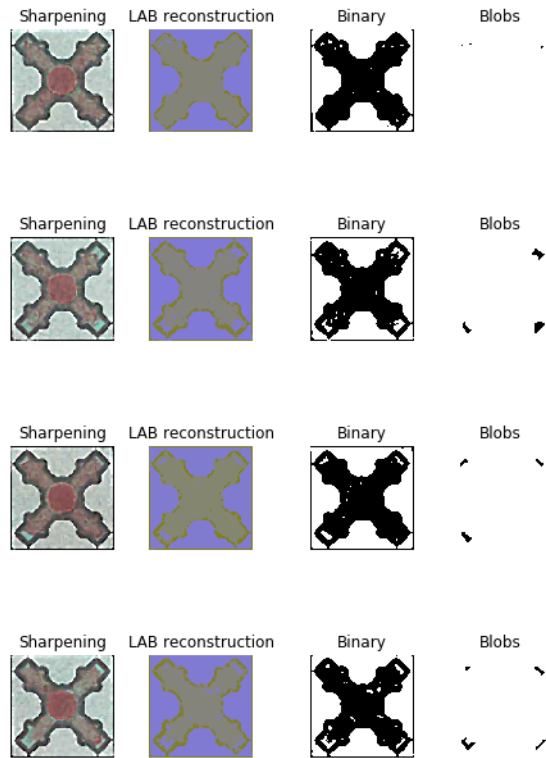
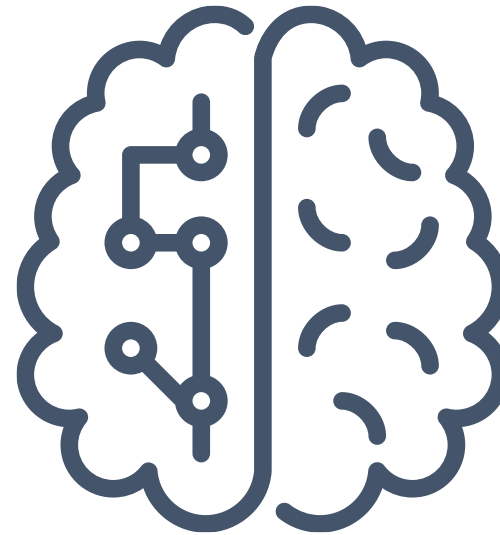
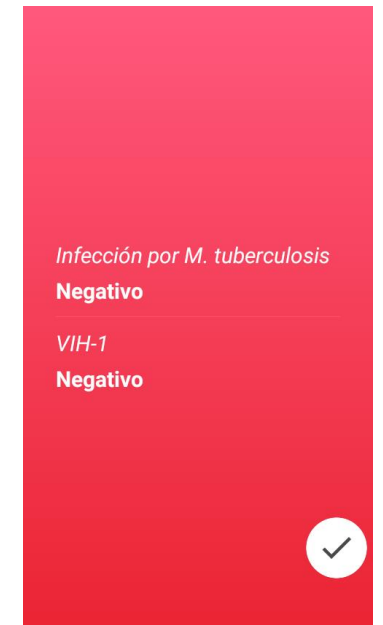


Image analysis feed

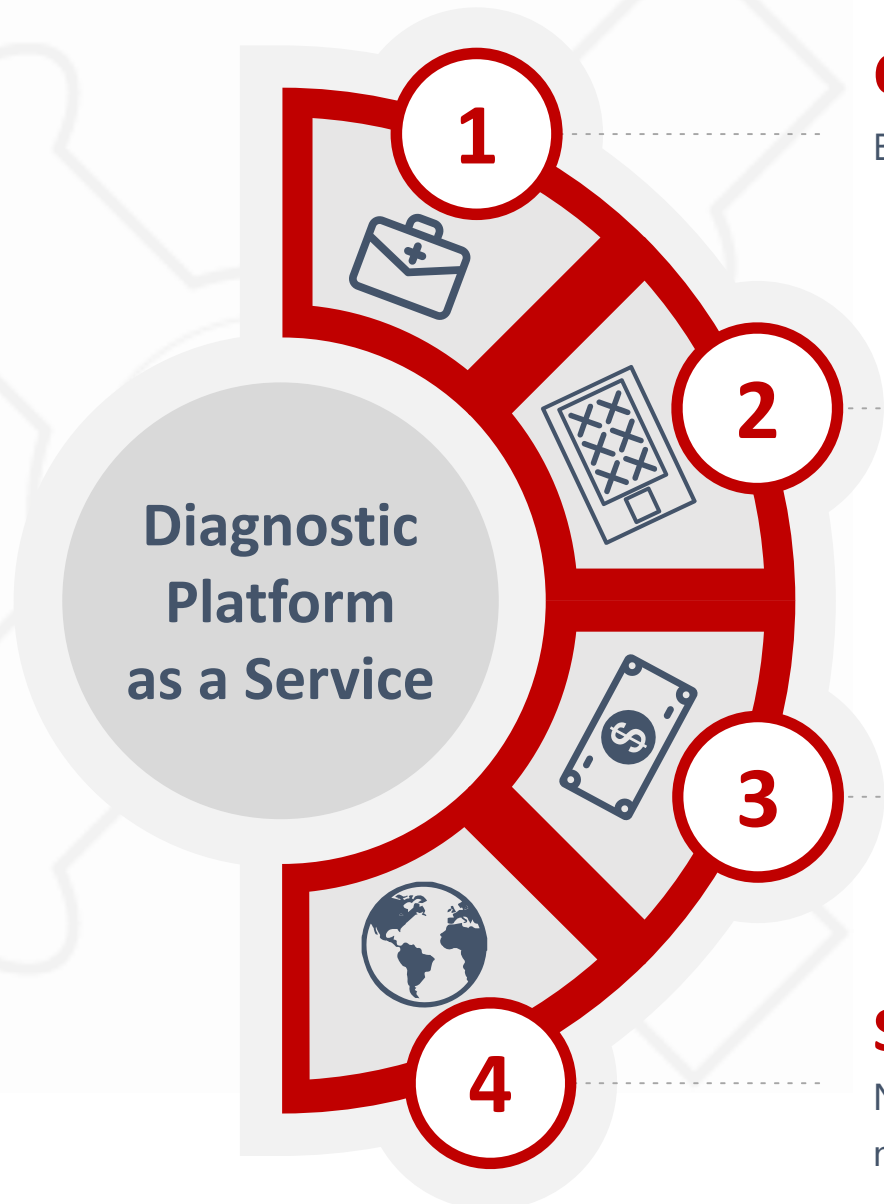


Convolutional Neural
Network algorithm



Diagnostic result

Business model



Customer

B2B to large users: Pharma, Government, health NGOs.

Product

Tailored test design over our platform to solve specific challenges in diagnostics

Revenue

Sales of testing devices. Future: subscription fee for real time analytics and data

Scale Up

No product lock in: product replicated with other clients in new markets

Target Markets

Point of care diagnostics is a
\$23 billion USD market



Global health

Health NGOs, International health organizations



Public health

Governments and National Health Systems



Private health

Pharmaceutical, Insurance and Consumer markets



Animal health

Livestock producers

Current traction



Customers

Key early customers for TB in 4 countries

New developments for human and animal health with Boehringer Ingelheim



Product

Tuberculosis test approval in European Union and Mexico by Q2 2020

Tuberculosis pilots in Zambia, South Africa, Cameroon, Guatemala, Paraguay Indonesia and Mexico



Product development

Tests developed: Tuberculosis, HIV

New tests in development: Dengue, Zika, Diabetes, SED (Swine), Parvovirus/Rabies/Distemper (Dogs)



Funding

Seed Round funding: \$2 million USD

Grant funding (non-dilutive): \$450,000 USD

Founder team



Jose Luis Nuno

Chief Executive Officer



Alejandro Nuno

Chief Scientific Officer



Laura Mendoza

Chief Product Officer



Rodrigo Nuno

Chief Manufacturing Officer

SECOND TIME FOUNDER TEAM

70+ years of experience in the pharma industry





Jose Luis Nuno
jose.nuno@unima.com.mx