



Argentina: Advances of AI implementations in healthcare

Dr. Alejandro Lopez Osornio

alejandro.lopezosornio@gmail.com

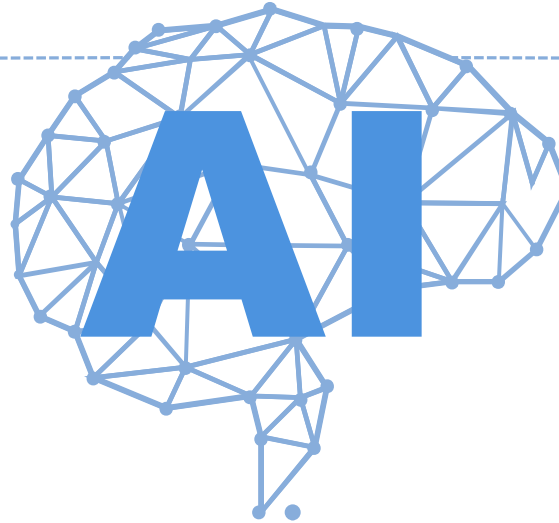
Scenario for AI

INNOVATION

Local and international projects that aim to improve patients health, and the security and quality of care

CLINICAL EVIDENCE

Studies that demonstrate the advantages and safety of AI tools in our population



Regulation

Mechanisms for certification of AI based tools and procedures.
Challenges of adaptive AIs.



Interoperability Standards

Terminology, Electronic Documents structure and Communication standards



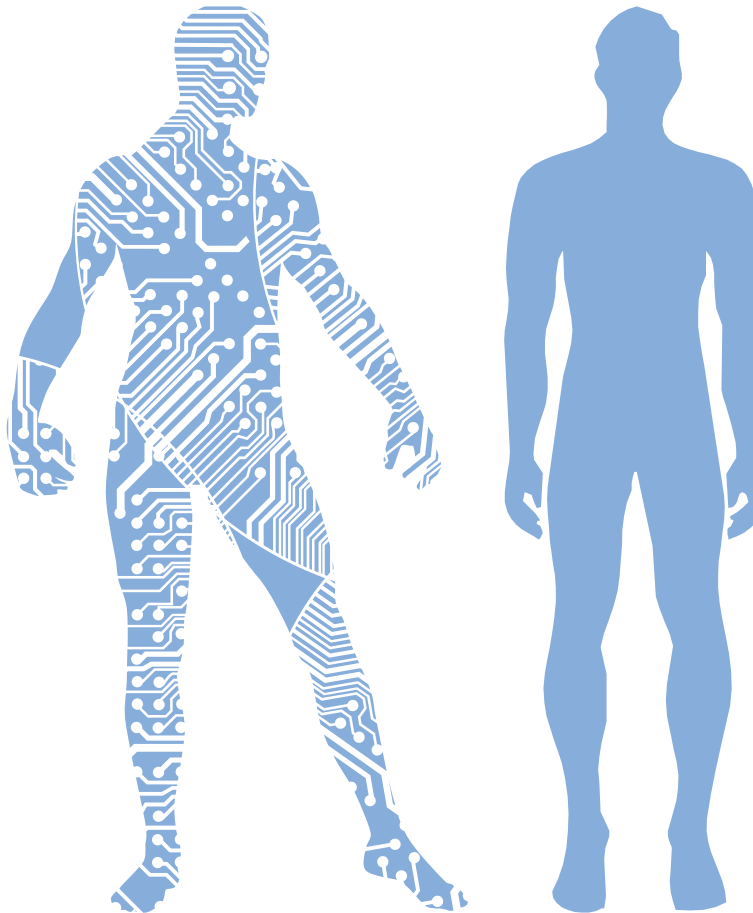
Privacy rules

How can AI designers get access to data? Can patients or companies share health data?

AI that supports doctors

Human supported by AI

Clinical Decision Support Systems that alert health workers for unnoticed patterns, trends, interactions, findings in images, context information, preferences, etc.



Human alone

Information overload strains the capabilities of health workers, it's a great challenge to be able to consider all available information, clinical records, evidence and guidelines at the point of care.



Artemisia: Detects lesions on Mammograms



HOSPITAL ITALIANO
de Buenos Aires



A neural network that detects suspicious patterns in digital mammograms. Trained with more than 10,000 mammograms. The tool is integrated in the reporting workflow and supports the decisions of image specialists.

<https://www.hospitalitaliano.org.ar/>

Entelai: Multi purpose image evaluation



Initially trained trained for the detection of anomalies in Brain MRI. Fully integrated in imaging specialists workflows. It's the first AI tool to be approved by ANMAT the national regulatory agency.

<https://entelai.com/>



How do I
apply for
certification?

ANMAT has approved Entelai
under the “Software as Medical
Device” (SaMD) model.

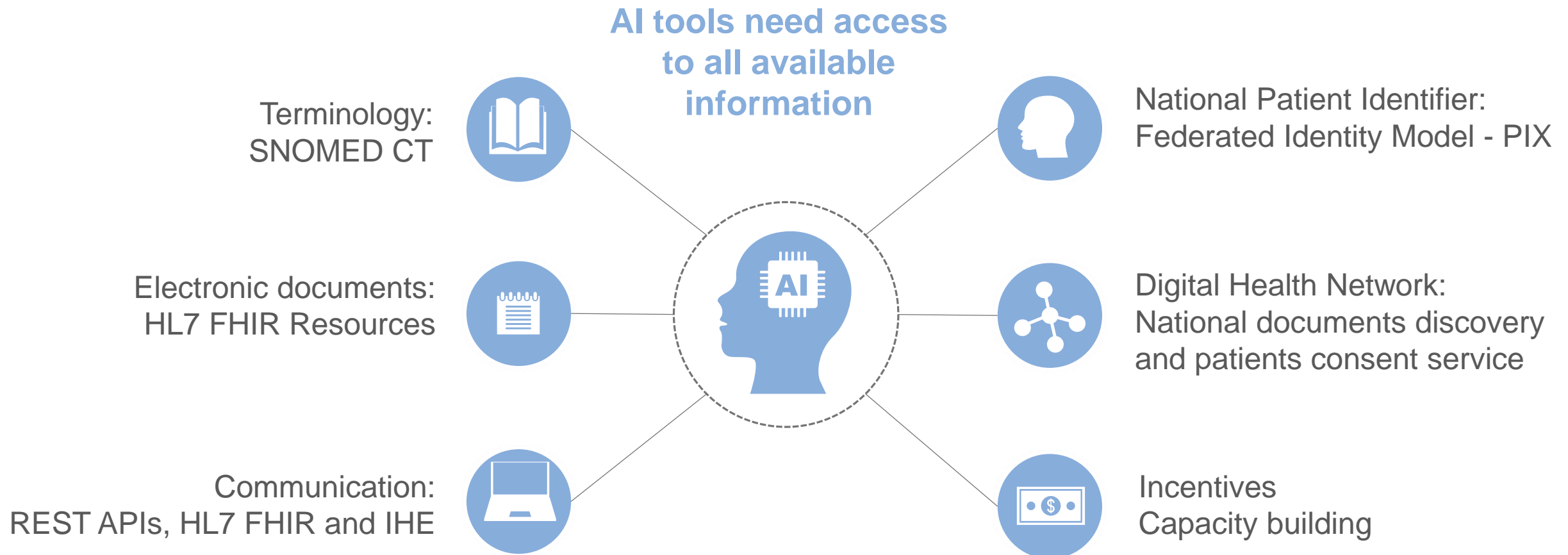
- The regulatory agency worked closely with the developers and experts in the ministry of science to create a brand new certification process
- The certificate still shows legacy metadata:
 - Composition
 - Expiration date
 - Sterilization mechanism
 - Place of manufacture

anmat
Administración Nacional de Medicamentos,
Alimentos y Tecnología Médica



Ministerio de Salud
Presidencia de la Nación

AI Interoperability Standards



Argentina National Digital Health Strategy: 2020 - 2024

Privacy



Patient consent

Does the use of AI require a specific consent in some cases?



Patients role

Can patients donate or sell data for AI developers?



Health providers role

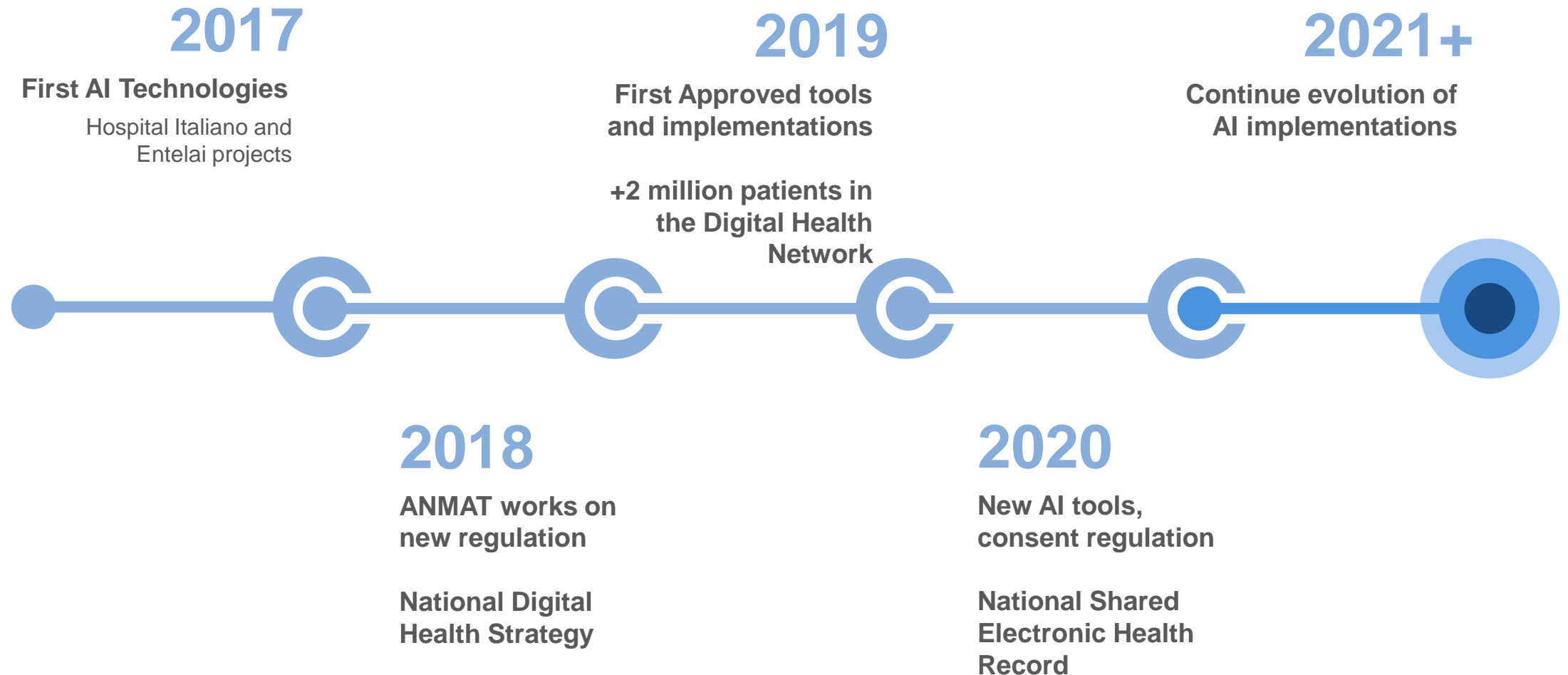
Can health providers share data? Sell deidentified datasets?



Inequity in access to training datasets

Access to data will be critical for the quality of the AI. Do all players have the same chance to access good quality data?

Digital Health and AI in Argentina





Thank You

alejandro.lopezosornio@gmail.com