



**Sixth Workshop on Network 2030 (13 January 2020) and
sixth meeting of Focus Group on Technologies for Network 2030 (14-15 January 2020)**

Practical information for participants

1 Workshop and Meeting venue

Name: ISCTE – University Institute of Lisbon

Address: Av. das Forças Armadas 36, 1649-026 Lisbon

Website: <https://futurecomresearch.eu/>



2 Getting to Workshop/Meeting venue

• **Underground**

Lisbon Portela Airport can now be reached directly by the Lisbon underground train. The Airport Metro Station is open from 06.30 to 01.00 daily. This train runs from the airport to the conference location (i.e. Entrecampos Metro Station), and the trip takes about 30 minutes.

One-way Carris/Metro ticket: €1.45

24-hour ticket: €6.15

Required rechargeable 7 Colinas/Viva Viagem electronic card: €0.50

More information available at: <http://www.metrolisboa.pt/>

• **Bus**

Bus Nº 744: Marquês Pombal – Aeroporto – Moscavide (operates daily from 06.15 to 21.30)

Bus Nº 783: Portela - Aeroporto - Amoreiras (operates daily from 06.15 to 21.30)

One-way ticket (purchased on the bus): €1.85

One-way Carris/Metro ticket: €1.45

24-hour ticket: €6.15

Required rechargeable 7 Colinas/Viva Viagem electronic card: €0.50

Important! The above-mentioned regular services operate with the following measurement limits for luggage: 55x40x20cm. For those with luggage exceeding these measurements, we suggest that you use the Aerobus service. More information is available at: <http://www.carris.pt>

• **Aerobus**

This daily service links the main points of the city, the Entrecampos Bus Terminal and others major transportation hubs.

Line 2: Financial Centre

Direction: Airport* – Av. José Malhoa (Sul)

Operates daily from 08.00 to 20.00/every 40 minutes

Direction: Av. José Malhoa (Sul) – Airport*

Operates daily from 08.00 to 20.00/every 40 minutes

*Direct connection to Airport Terminals T1 and T2

24-hour Aerobus Pass

Adult: €3.50; Child (4–10 years old): €2.00; Groups (4 or more adults): €2.00

The 24-hour Aerobus Pass can be purchased on-board, on-line or at the Lisbon Tourism counters in the public Airport Arrivals area. This ticket is valid for 24 hours on the Aerobus network (i.e. unlimited trips).

2x24-hour Aerobus Pass

Adult: €5.50; Child (4–10 years old): €3.00

The 2 x 24-hour Aerobus Pass can be purchased on-board, on-line or at the Lisbon Tourism counters in the public Airport Arrivals area. Each time the pass is activated, it is valid for 24 hours on the Aerobus network (i.e. unlimited trips). More information available at: www.yellowbustours.com

3 Local Host Focal Point:

For any questions related to venue and visa invitation letter, please contact:

Name: Daniel Nunes Corujo

Email: dcorujo@av.it.pt

Phone: +351 234 377 900

4 Recommended Hotels near the event Venue

Participants are in charge of their own booking of accommodation.

Name: Hotel NH Lisboa Campo Grande Address: Campo Grande 7, 1700-087 Lisbon - Portugal Website: Hotel NH Lisboa Campo Grande
Name: Hotel 3K Europa Address: Av. da República 93, 1050-190 Lisboa, Portugal Website: Hotel 3K Europa
Name: SANA Metropolitan Hotel Address: Soeiro Pereira Gomes, Parcela 21600-198 Lisboa Portugal Website: SANA Metropolitan Hotel
Name: VIP Executive Entrecampos Hotel & Conference Address: Avenida 5 de Outubro, 295, 1600-035 Lisboa - Portugal Website: https://www.viphotels.com/en/Hotels/VIP-Executive-Entrecampos/Location.aspx
Name: VIP Inn Berna Hotel Address: Avenida António de Serpa, 13, 1069-199 Lisboa - Portugal Website: https://www.viphotels.com/en/Hotels/VIP-Inn-Berna/About-Hotel.aspx

5 Arrival and transportation

The venue doesn't provide airport pick-up/drop off. Participants are in charge of their own transportation from and to airport.

6 Invitation Letter for Visa

Please kindly provide the host with the following information when submitting your requests for invitations letter to Daniel Nunes Corujo at dcorujo@av.it.pt.

- **Full name:**
- **Passport ID:**
- **Passport Issuing Country:**
- **Passport expiration date:**

7 Currency and exchange

The official currency is Euro.

8 Opening hours

Banks are normally open from 08:30 am to 3:00 pm on weekdays. Shops open from Monday to Friday between 9 am and 10 am and closing at 7 pm.

9 Climate

In January, the average temperature is reaches a high of 15°C.

10 Local time

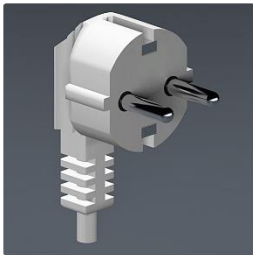
GMT +1

11 Telecommunications

The area code is +351.

12 Voltage

The voltage in Lisbon is 230 V.



13 Internet connectivity

WiFi Internet access will be available to participants during the meeting.

14 Information about the city

Top 10 touristic attractions in Lisbon:

1. Castelo de São Jorge: <https://lisbonlisboaportugal.com/Alfama-Lisbon/lisbon-castle-st-george.html>
 2. Torre de Belém: <https://lisbonlisboaportugal.com/belem-lisbon/torre-de-bel%C3%A9m-belem-tower-lisbon.html>
 3. Elevador de Santa Justa: <https://lisbonlisboaportugal.com/Baixa-Lisbon/Elevador-Santa-Justa-Lisbon-elevator-lift-guide.html>
 4. Cristo Rei: <https://lisbonlisboaportugal.com/lisbon-sights/cristo-rei-christ-statue-lisbon.html>
 5. Ajuda Palace: <http://www.palacioajuda.gov.pt/>
 6. Mosteiro dos Jerónimos: <https://lisbonlisboaportugal.com/belem-lisbon/mosteiro-dos-jeronimos-monastery-lisbon.html>
 7. Praça do Comércio: <https://lisbonlisboaportugal.com/Baixa-Lisbon/praca-do-comercio-lisbon-portugal-guide.html>
 8. Padrão dos Descobrimentos: <https://padraodosdescobrimentos.pt/en/monument-to-the-discoveries/>
 9. Igreja de São Roque: https://en.wikipedia.org/wiki/Igreja_de_S%C3%A3o_Roque
 10. Ponte 25 de Abril bridge: https://en.wikipedia.org/wiki/25_de_Abril_Bridge
-