

# ITU Workshop on Artificial Intelligence for Health Geneva, Switzerland, 25 September 2018

**SKaPa**

Swedish Quality Registry for Caries and Periodontal disease

Dr Hans Östholm

Deputy Registry Manager

## Session 3: Data Availability and Benchmarking

- Standardized formats
- Availability of data sources
- Open data sources
- Evaluation and validation
- Predictions equitable

# Standardized formats

Diagnos code	Condition	Clinical measures
3044	Peri-implantitis	162, 301, 302, 303, 311, 312, 313, 314, 341, 342, 343, 362, 405, 429, 435, 436, 441, 443, 445, 480, 880, 882

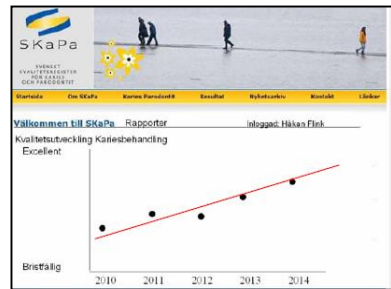
# Standardized formats, availability of data sources

## Data and information flow

Quality improvement  
Research  
Follow-up, reports



Documentation in  
patient record system



### The SKaPa Concept



Compilation and  
analyzes



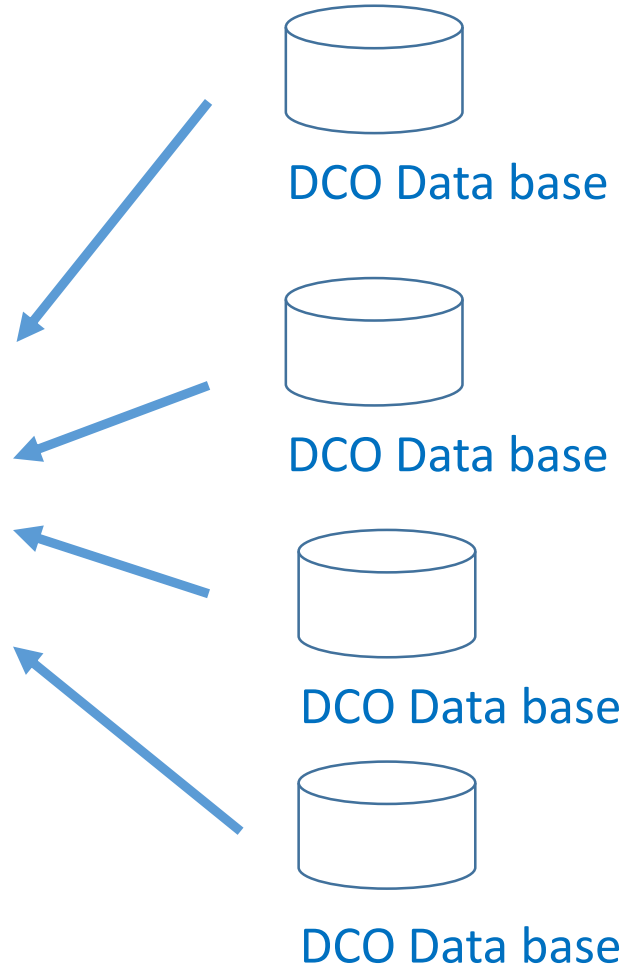
Automatic retrieval  
of information to  
SKaPa

### SKaPa Data Warehouse

# Availability of data sources



**SKaPa Data  
Warehouse**



**22 dental care organizations (DCO)**

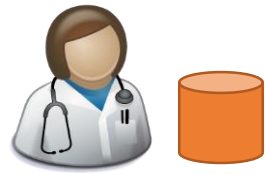
21 public dental care (1 200 clinics)  
1 private (300 clinics)

6.5 million patients

800 million tooth-surfaces

1 000 million gingival pockets

# Open data sources

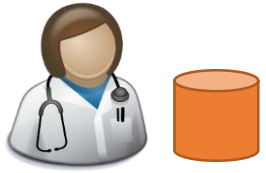


National Quality Registries

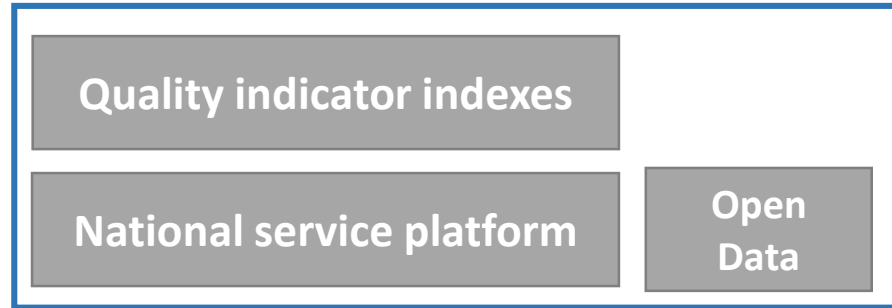


Public data and reports

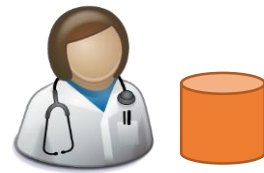
For management, follow-up and quality improvement



Authorities



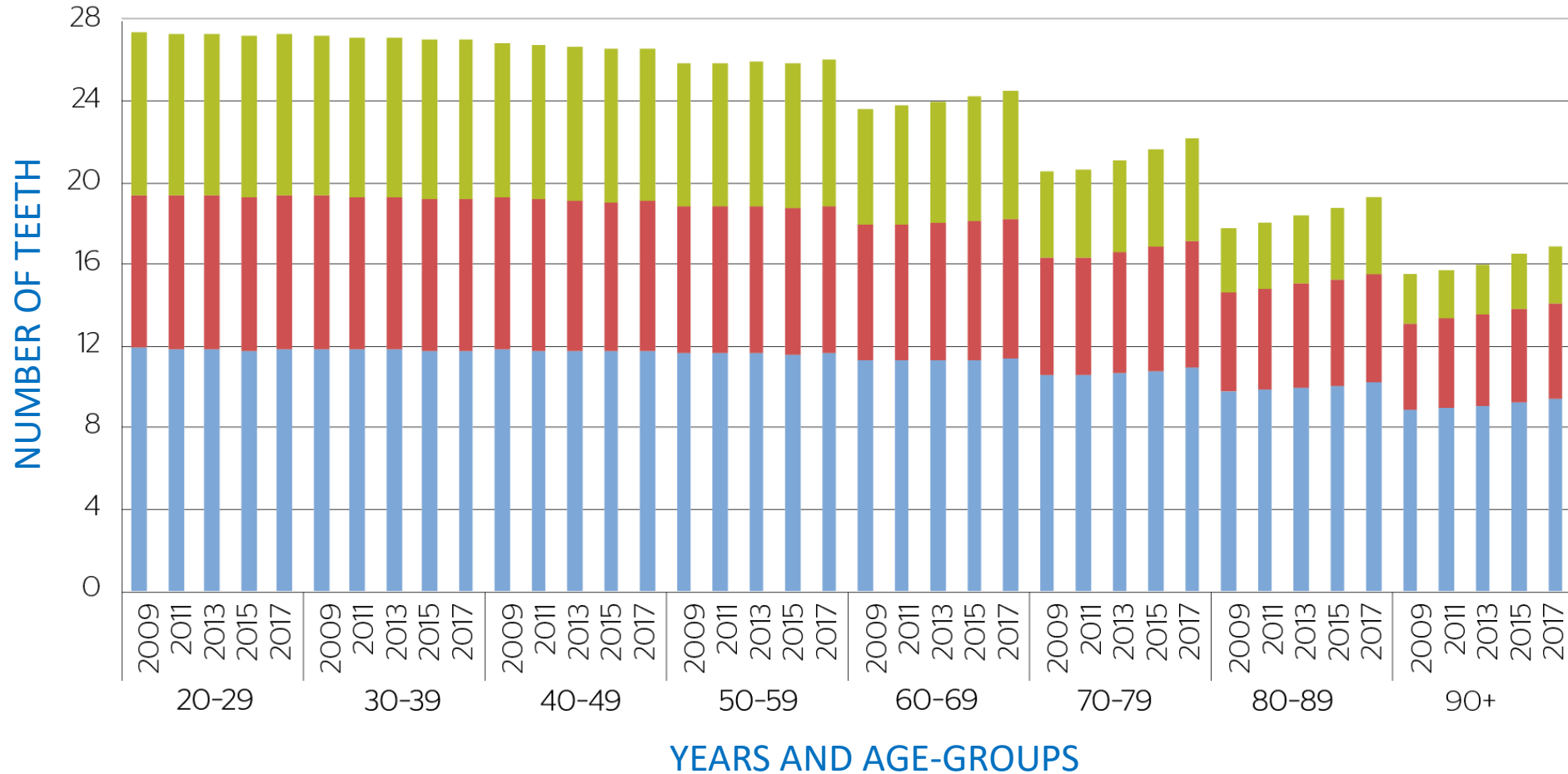
Access for innovators, patients and residents



Data sources in the County Councils

# Evaluation, prediction and validation

## Number of teeth, 20 yrs and older



## Conclusion:

- Standardized formats – standardized information
- Availability of data sources – crucial
- Open data sources – at present under discussion
- Evaluation and validation - regular validation
- Predictions equitable – possible to make



**Thank you very much for your attention!**