

**SG 11 Regional Workshop for Africa on
“Counterfeit ICT Devices, Conformance and
Interoperability Testing Challenges in Africa”
(Cairo, Egypt 5 April 2017)**

**Combat of Counterfeit and Stolen ICT
Devices**

João Alexandre Zanon

**National Telecommunication Agency – ANATEL/Brazil
Vice Chairman of ITU-T SG11 and WP3/11 – Rapporteur of Q15/11
*zanon@anatel.gov.br***



Outline

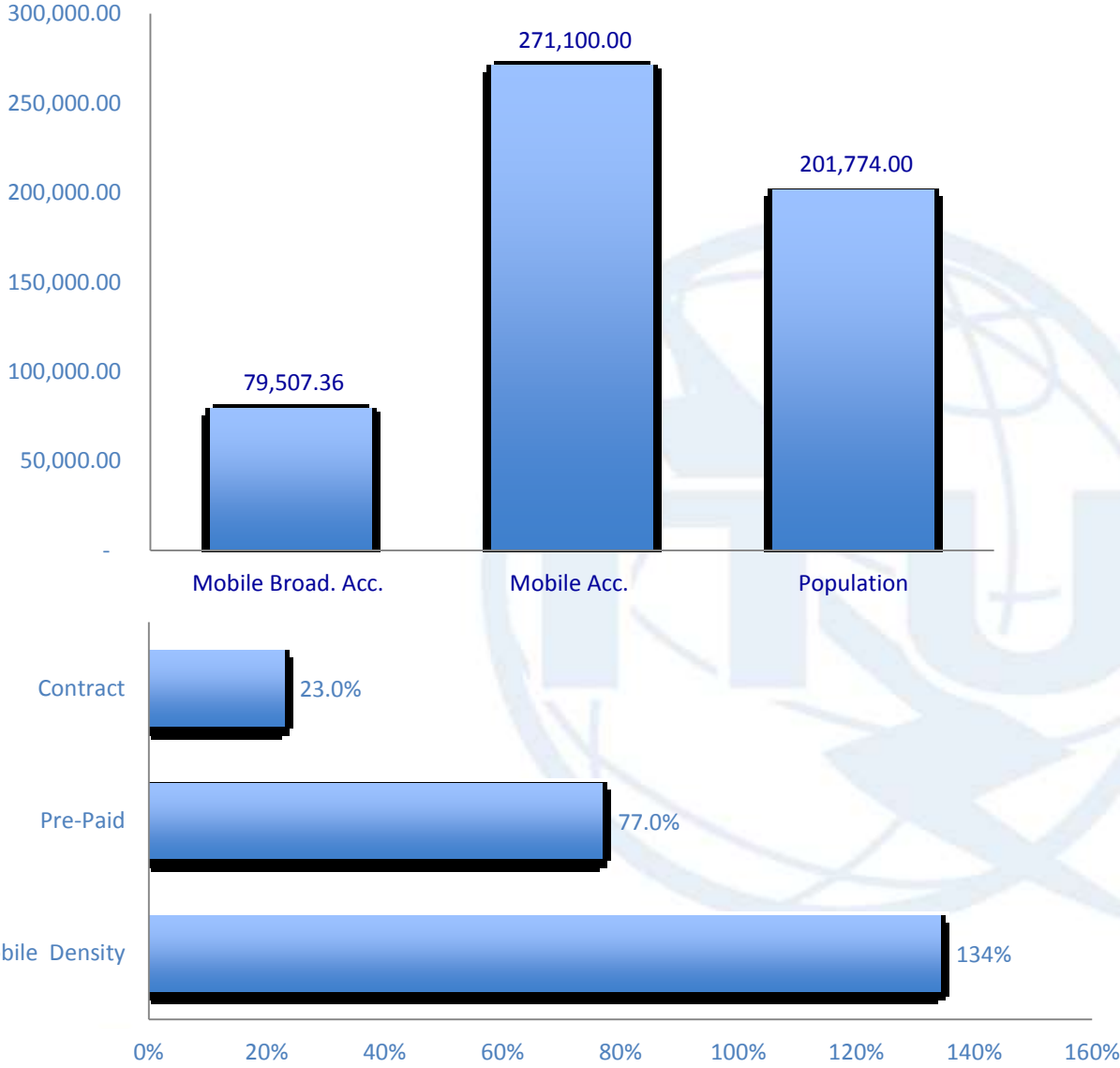
- **The Brazilian Scenario.**
- **Challenges when addressing the problem.**
- **The importance of Conformity Policies.**
- **Latest CITEL actives.**
- **Latest ITU actives.**
- **What we should aim for.**



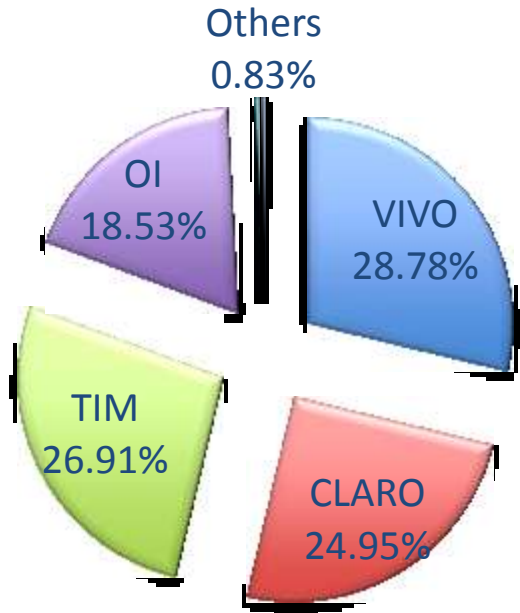
A large, faded watermark of the ITU logo is centered on the page. It consists of a globe with the letters "ITU" overlaid in a light blue color.

The Brazilian Scenario

General Statistics



Mobile Market Share



C&I Applicable Laws and Regulations

- **Law 9.472 (July 1997) – General Telecommunications Law.**
 - Establishes that **Anatel**, the Brazilian National Telecommunications Agency is responsible for issuing or recognizing the certification of telecommunication products and for issuing standards and regulations regarding their use in Brazil.
 - **Resolution 242 (November 2000) – General regulations on the certification and approval of telecommunication products.**
 - Establishes that any telecommunication product, before it may be sold or used in Brazil, must have a **CERTIFICATE OF CONFORMITY** issued by a **Designated Certification Organization – OCD** and approved / homologated by Anatel.
 - Anatel may implement Mutual Recognition Agreements for conformity assessment of telecommunication products.
- “ All equipment that use radiofrequency to transmit signal must be certificate before being used on Brazil.”**

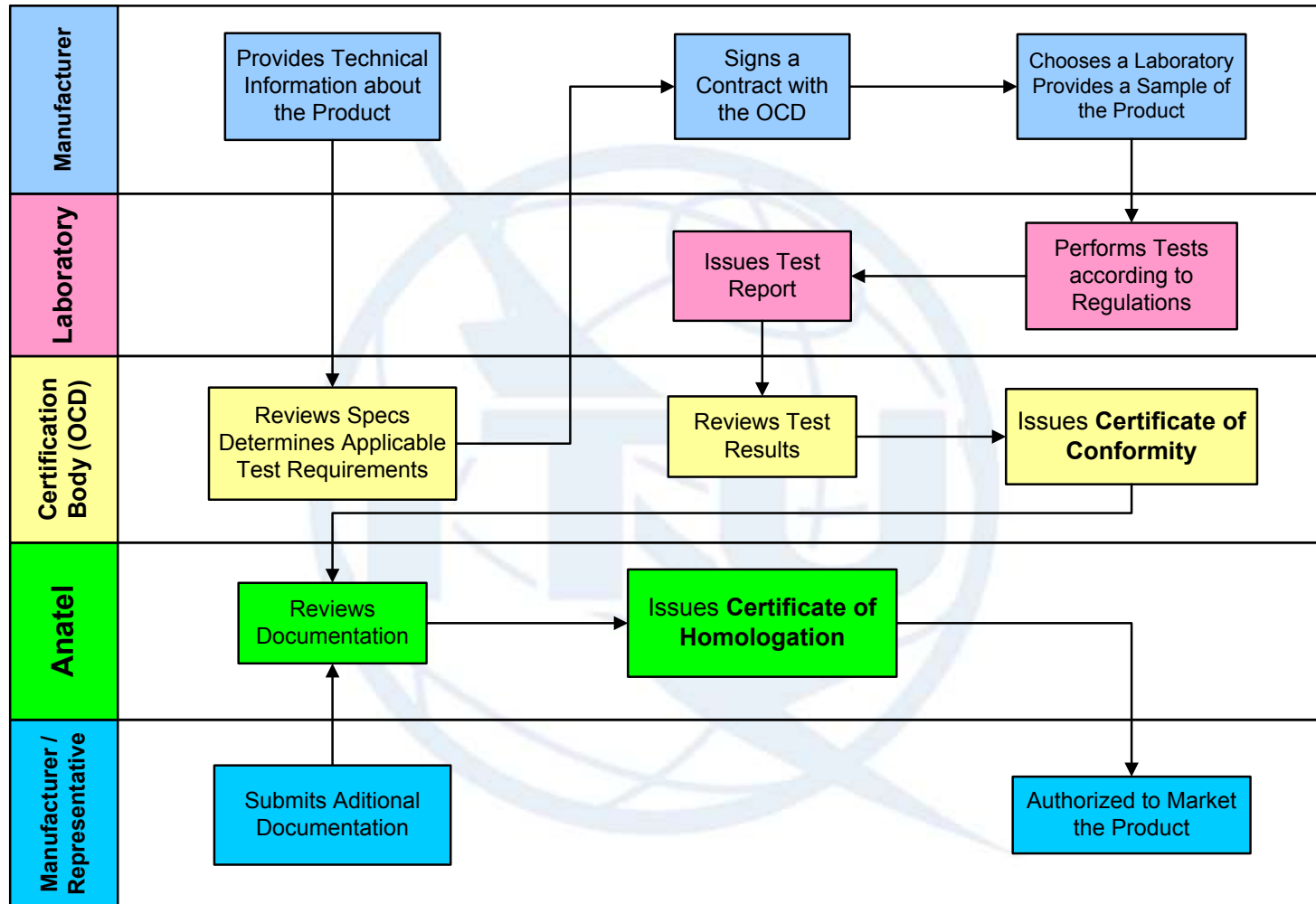


CA - Enforcement activities

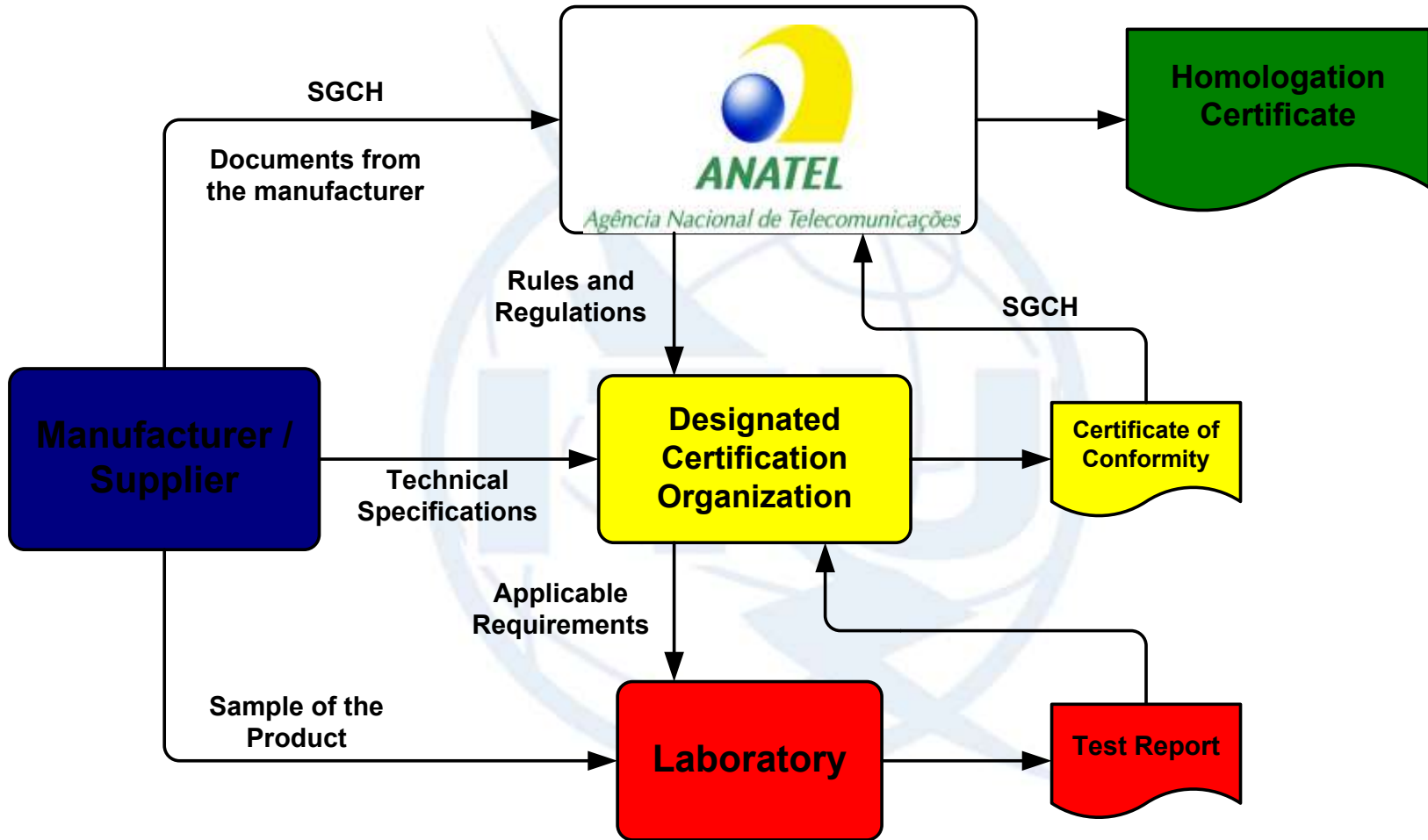
- To Identify and combat defining preventive actions to protect the market;
- To favor fair competition between all equipment manufacturers;
- Protect the internal market and the end-user;
- **Pre-Market Surveillance (Type Approval):**
 - To grant access to market by compliance demonstration;
- **Currently are available in Brazil, for testing telecom products:**
 - **23** Third Party laboratories: **18** accredited by INMETRO and **5** by OCDs;
 - **5** First Party laboratories evaluated by OCDs.
- **Pós-market (Oversight):**
 - When demanded (complaints).
 - Continuous validation the equipment follows up-to-date regulations;



Brazilian Certification Process



Stakeholder Roles



SIGA - Sistema Integrado de Gestão de Aparelhos



- O “Sistema Integrado de Gestão de Aparelhos – SIGA” aims to **control counterfeit, tampered and unauthorized** mobile devices.
- The project is based on Anatel Regulatory framework that dictates that **operators can only allow on the network authorized devices.**
- The Project is lead by Anatel with the participation of all relevant actors (**Anatel, Operators, ABR-Telecom, Manufactures, GSMA, among others**).
- The system is operated by ABR-Telecom and is **active since march 2014** collecting the relevant information from all mobile networks on Brazil.



- **Centralized solution:** built jointly and integrated to all Brazilian mobile operators;
- **Automated solution:** allowing the input of information with low human intervention;
- **Scalable, Dynamic and Flexible:** expandable system, rules adjusted over time;
- **Multiple sources of info:** CDRs, operators systems, international databases;
- **Reliable and secure:** Minimize impacts on regular end users;

- On november 2016 Abinee (manufactures association) promoted an awareness campaign “Celular pirata não”
 - Major campaign involving, TV, Newspaper, internet and other street media.
 - <https://www.youtube.com/channel/UCdAapZdKU0BMJR8De8phg1Q>
- On February 2017 Anatel as launched the website of the project SIGA called “Celularlegal”.
 - The website aims to help end-users to purchase only regular devices.
 - www.anatel.gov.br/celularlegal
- Anatel is preparing to start an awareness campaign focused on new irregular devices identified o the network.
 - Initial communication by SMS to all new irregular devices identified on the network.
 - Preparation of the Call-Center of Anatel, Operators and manufactures to assist users.
 - Aligned communication language with all the participants based on Anatel's website of the project.

Anatel will provide a tool to enduser check if the device he would like to buy is regular (including checks regarding Stolen devices blacklisting).

Challenges when addressing the problem.

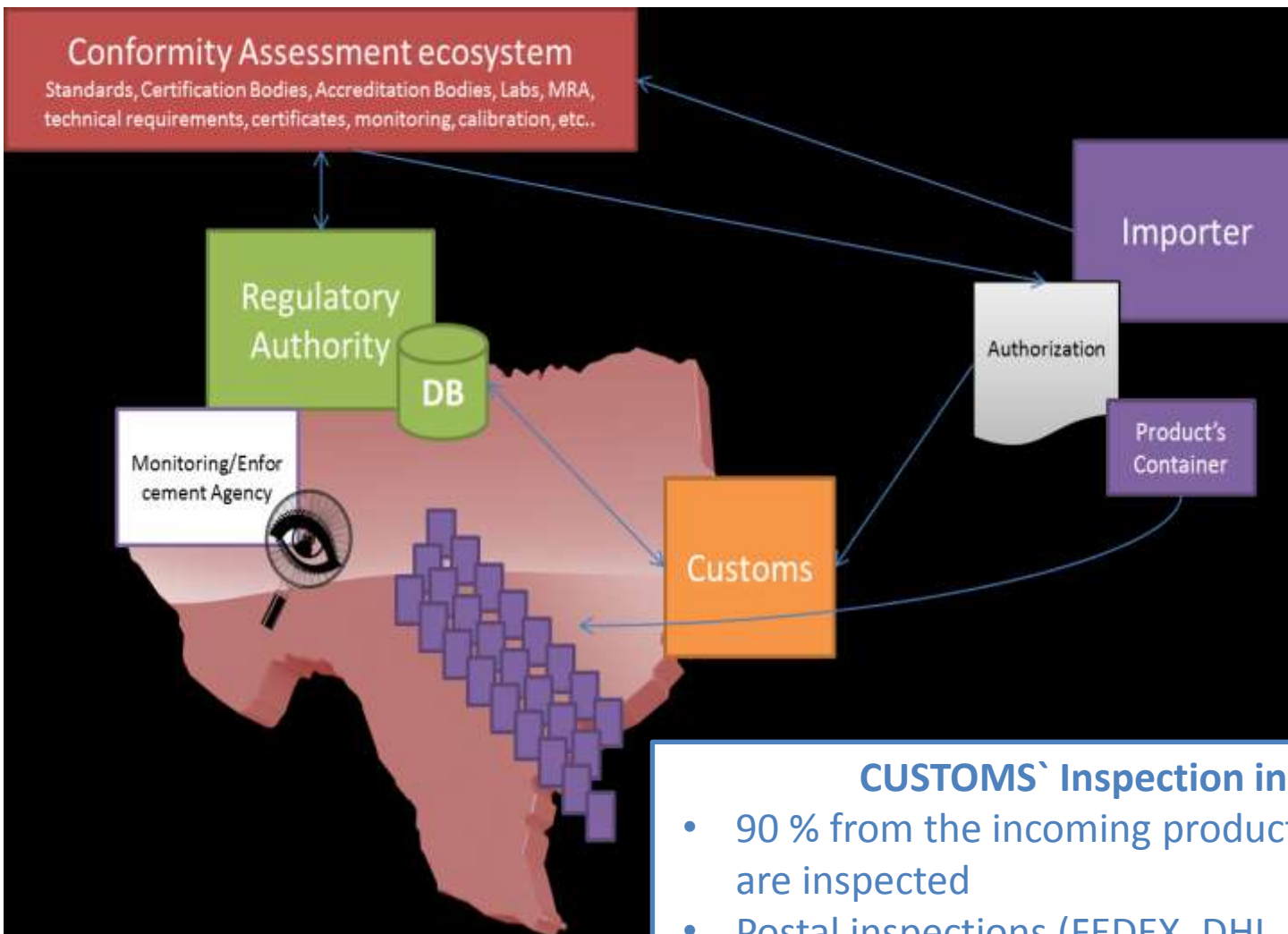


Challenges when addressing Counterfeit/Substandard/unauthorized

- **Construct a reliable reference database.**
 - Need of reliable Unique identifiers (as indicated on Res. 188).
 - Preferable use of international reference databases + national bases.
- **Identification and definition** of actions for for each scenario.
 - Attack every device of focus first on voice terminals?
 - How to address the cloned problem?
- **Reduce end-user impact.**
 - Define Legacy Terminal actions (regulatory wave?)
 - Strong Educative campaign to pass information to the user.
- **Actions effective only on terminal already on the network.**
 - How to control the entrance of new Counterfeit and other irregular devices?



Blocking the entrance of these new Devices



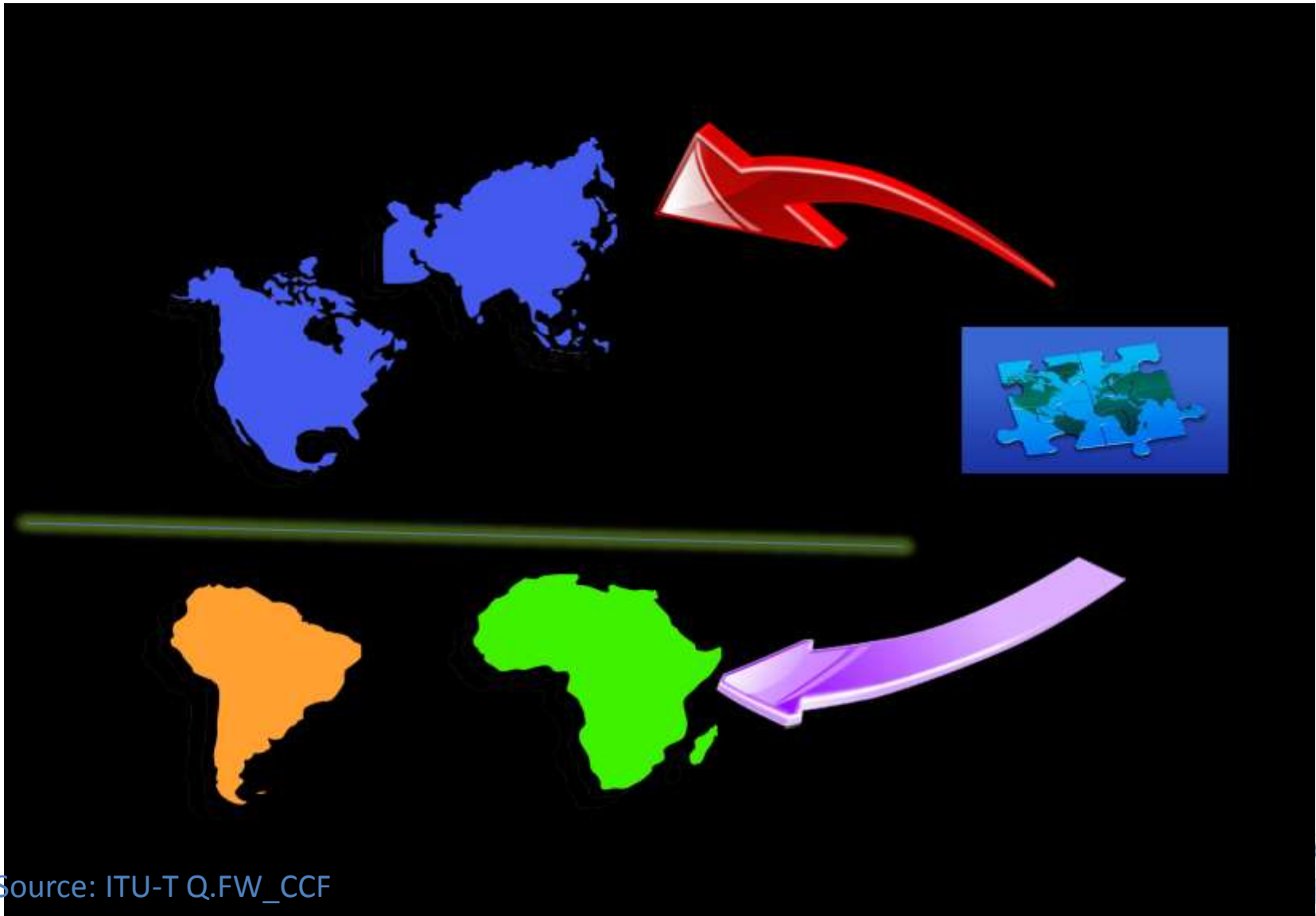
CUSTOMS` Inspection in Brazil:

- 90 % from the incoming products to Brazil are inspected
- Postal inspections (FEDEX, DHL, UPS, TNT, etc).
- Shipping inspections – when demand.

Source: ITU-T TR – Combating Counterfeit



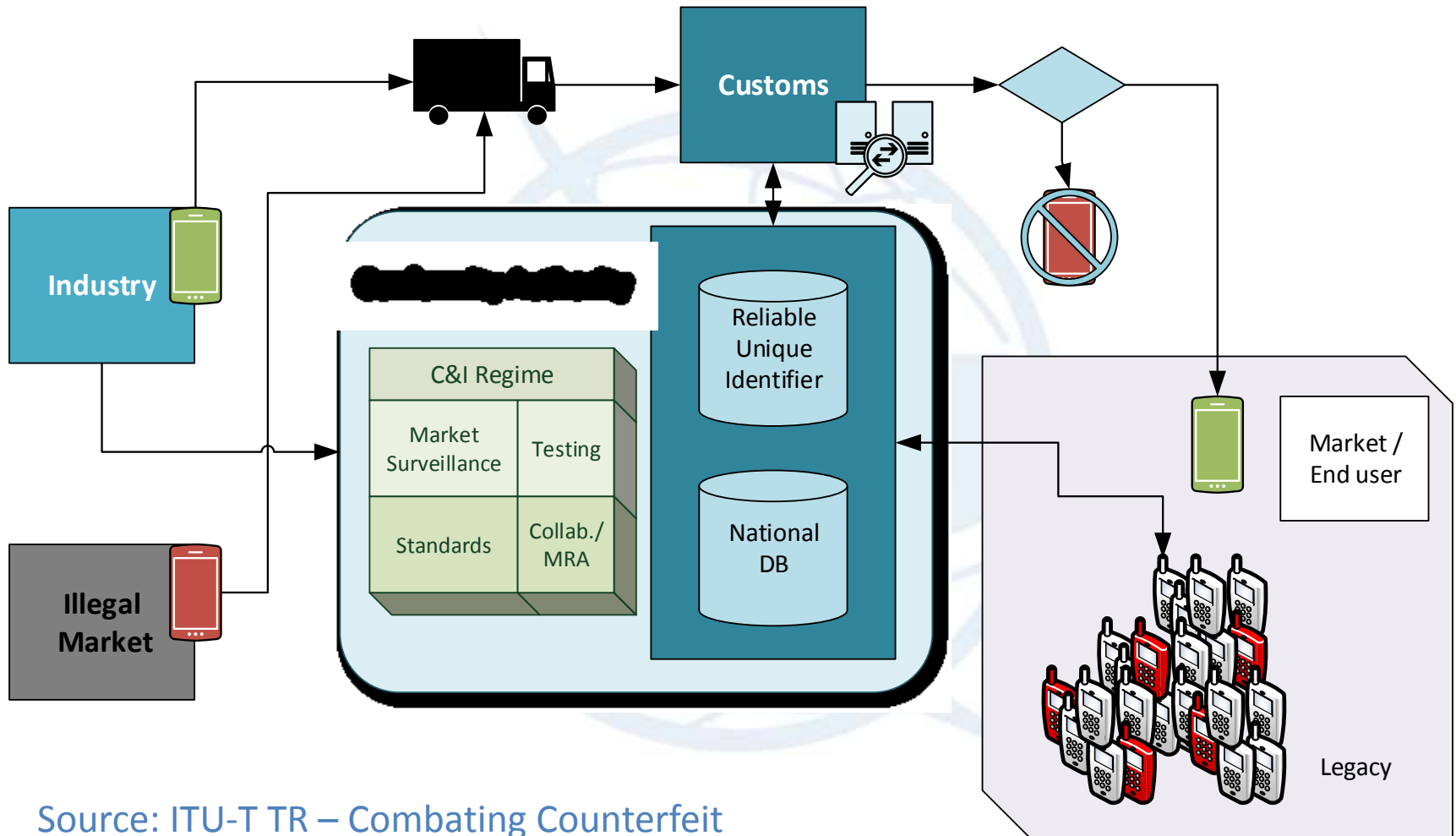
Conformity Assessment Importance



Source: ITU-T Q.FW_CCF



Proposed ICT Equipment Control Workflow



Source: ITU-T TR – Combating Counterfeit

A large, light blue watermark of the ITU logo is centered on the page. It features a globe with a lightning bolt and the letters 'ITU' in a stylized font.

Multi Layer Initiatives



Multi Layer Initiatives Regarding Counterfeit

- **National:** Example - Brazil's SIGA and Custom Integration.
- **Regional:**
 - **CITEL CCPI:**
 - **GTPR Correspondence Group** on the Combat of Counterfeit, substandard and unauthorized mobile terminals.
 - **GTPR Rapporteurship** on Fraud Control, Regulatory Non-compliance Practices in Telecommunications and Regional Measures against the Theft of Mobile Terminal Devices.
 - **Creation of a Technical Notebook on Counterfeit and discussion of Q.FW_CCF**
 - **IAP with a proposal of new WTSA-16 Resolution on the combat of Counterfeit**
- **Global Wide Actions:**
 - **PP14 Resolution 188 on Counterfeit.**
 - **ITU-T SG11 (Q8/11) Technical Report.**
 - **ITU Event on the combat of Counterfeit.**
 - **Q.FW_CCF "Framework for solution to combat counterfeit ICT Devices".**
 - **WTSA-16 – Res. 96 Combating counterfeit ICT devices**
 - **SG 11 Regional Workshop for Africa on Counterfeit ICT Devices.**



Most Relevant CITEI PCCI Activities

- **XXIV Meeting of PCC.I (Lima, May 2014):**
 - **Resolution 222 (XXIV-14)** - established the "Correspondence Group to Discuss Regional Measures to Combat the Spread of Counterfeit, Substandard and Unapproved Mobile Devices"
 - **Mandate: develop definitions ,evaluate the scope; share information, experiences and best practices among Member States and associate members of CITEI, developing recommendations and guidelines**
- **XXVII Meeting of PCC.I (Washington, September 2015):**
 - Proposal of the **base text for the Technical Report** on Counterfeit, Substandard and Unauthorized based on ITU-T TR Counterfeit and responses to the questionnaire.
 - Discussion on how CITEI can **coordinate** its works with **ITU-T Q8/11** work items.
 - Discussion of **IAP/Multi-country** contribution to Draft Recommendation **ITU-T Q.FW_CC**.
- **XXIX Meeting of PCC.I (Lima, September 2016):**
 - **Approval of a Inter-America Proposal (IAP) to create a new WTSA Resolution on the combat of Counterfeit ICT.**



A large, light blue watermark of the ITU logo is centered on the page. It features a globe with a lightning bolt and the letters 'ITU' overlaid.

Recent ITU Initiatives



On going work from the past Study-Period Q8/11:

Based on **PP-14 Resolution 188** - Combating counterfeit telecommunication/information and communication technology devices

- **Q.FW_CCF:** Framework for solution to combat counterfeit ICT Devices
- **TR-CF_BP:** Technical Report - Guidelines on Best Practice and Solutions for Combating Counterfeit ICT Devices
- **TR-Uni_Id:** Technical Report on use of anti-counterfeiting technical solutions relying on unique and persistent mobile device identifiers



Resolution 2 of WTSA-16 – SGs responsibility and mandates

ITU-T SG11 Lead study group on **combating counterfeiting** and the use of **stolen ICT devices**

AREAS OF STUDY OF ITU-T SG11: studies to **combat counterfeiting products** including telecommunication/ICT and **mobile device theft**

Q15/11 Questions:

- What technical reports are needed to **raise awareness** of the problem of counterfeiting of ICT equipment and the dangers they pose?
- Can **Conformity and interoperability** testing and assessment schemes be used to combat counterfeit ICT equipment?
- What **technologies may be used** as a tool for combating counterfeit, tampered and stolen ICT equipment?
- What **identity management frameworks** are appropriate to combat counterfeit and stolen ICT equipment with their identity modified?
- What kind of **Recommendations, technical reports and guidelines should be developed** to combat ICT **counterfeiting**, tampering, modification and/or duplication of unique device identifiers?
- What kind of **Recommendations, frameworks, technical reports and guidelines should be developed** to assist ITU Members, in cooperation with ITU-D Sector, on combating counterfeit and mitigate the use of **stolen** ICT equipment?
- What ITU Recommendations are required to **secure the supply chain management** (from manufacturing, importation, distribution and marketing) to ensure traceability, security, privacy and trust of people, products and networks?



Resolution 2 of WTSA-16 – SGs responsibility and mandates

ITU-T SG11 Lead study group on **combating counterfeiting and the use of stolen ICT devices**

AREAS OF STUDY OF ITU-T SG11: studies to **combat counterfeiting products** including telecommunication/ICT and **mobile device theft**

Q15/11 Task:

- **Develop Recommendations, technical reports and guidelines** to assist ITU Members, in cooperation with ITU-D Sector, on combating **counterfeit** ICT equipment
- **Develop Recommendations, technical reports and guidelines** to address the problem of stolen ICT equipment and to assist the Member States, in cooperation with ITU-D Sector, in deploying solutions to and mitigate the use of **stolen** equipment
- **Study any possible solutions, including identity management frameworks,** to combat counterfeit and stolen ICT equipment with their identities modified
- **Study any technologies that can be used** as a tool for combating counterfeit and tampered ICT equipment
- **Organize workshops and events across ITU regions** in cooperation with the ITU-D Sector to promote the work of ITU-T in this field and involve stakeholders
- **Study possible conformity and interoperability testing (C&I) solutions** to combat counterfeiting of ICT equipment, taking into account the activities of the ITU-T CASC
- **Study results achieved by various international standardization bodies** and develop technical specifications to feed the standardization work of the Question



Resolution 96 of WTSA-16 - Combating counterfeit ICT devices

Instructs ITU-T Study Groups 11, within their mandate:

- Developing **Recommendations, technical reports and guidelines** to address the problem of counterfeit and tampered ICT equipment
- Collect, analyze and **exchange information** about counterfeiting and tampering practices
- Study existing as well as **new reliable, unique, persistent and secure identifiers** that have the potential to be used in combating counterfeit and tampered products, including the context of their **possible duplication/cloning**
- Develop methods of **assessing and verifying identifiers** used for purposes of combating counterfeit production
- Develop mechanisms as appropriate for identifying products, unique identifiers that are **resistant to duplication and respond to confidentiality/security** requirements
- Study possible solutions, including **frameworks to discover identity management** information, that could support combating of counterfeit and tampered ICT devices
- Identify **a list of technologies/products**, used for testing conformance with ITU-T Recommendations, in order to help in efforts to combat counterfeit production



Resolution 97 of WTSA-16 - Combat mobile device theft

Instructs ITU-T Study Groups 11, within their mandate:

- Develop Recommendations, technical reports and guidelines to address the problem of mobile telecommunication device theft and its negative effects
- Study any possible solutions to combat the use of stolen mobile telecommunication devices with tampered (changed without authorization) identities and to prevent them from accessing the mobile network
- Study any technologies that can be used as a tool for combating mobile telecommunication device theft
- Draw up a list of identifiers used in mobile telecommunication/ICT device





Key topics to be addressed

KEY CHALLENGES BASED ON RES. 2, 96, 97.

- Developing Recommendations, technical reports and guidelines on combating the use for Counterfeit and Stolen Devices.
- Study existing as well as new reliable, unique, persistent and secure identifiers to assist on the combat of counterfeit and stolen.
- Methods of assessing and verifying identifiers used for purposes of combating counterfeit production.
- List of technologies/products, used for testing conformance with ITU-T Recommendations, in order to help in efforts to combat counterfeit ICT production
- Solutions to address the problem of tampering and duplication of unique identifiers.



Strategic plan for Study Period (2017-2020)



Strategic plan for Study Period (2017-2020)

Proposed Strategic plan for addressing the Challenges:

- **Division of the work in four major blocks, based on the Res. 2, Res. 96 and Res. 97:**
 1. Raise the awareness and promote the discussion;
 2. Coordinate the actions and collect information, within and outside ITU;
 3. Produce deliverable, such as Technical Reports and Recommendation;
 4. Assist ITU members implement the deliverables and combat the use of counterfeit and stolen devices;
- **Continuation and improve of the actions regarding the combat of Counterfeit.**
- **New immediate actions on the combat of Stolen Mobile Devices:**
 - **Proposal of new Recommendation: Framework for Combating the use of Stolen Mobile Devices.**
 - Proposal of a Workshop to raise information an awareness.



A large, faded version of the ITU logo, which consists of a globe with a satellite dish and the letters "ITU" in the center.

What we should aim for

What we should aim for

- **Multi Level Actions and Cooperation.**
 - Bilateral and Regional cooperation.
 - International best-practices and recommendations.
- **Reduce End-user impact (Good Faith user)**
 - Good user communication is crucial.
 - Weave for legacy terminal (turnover).
- **National multiple actions to combat Counterfeit and Tampered**
 - Structured C&I Policy and Custom Integration.
 - Solutions to Remove Counterfeit from the market.
- **Reliable reference databases and Unique Identifiers to our solutions**
 - Secure unique identifier - PP14 Res. 188 Counterfeit
 - **WTSA Resolution 96 and 97.**
 - Global references databases + Country Specific databases.





Thank You!
Any Questions?

João Alexandre Zanon
zanon@anatel.gov.br