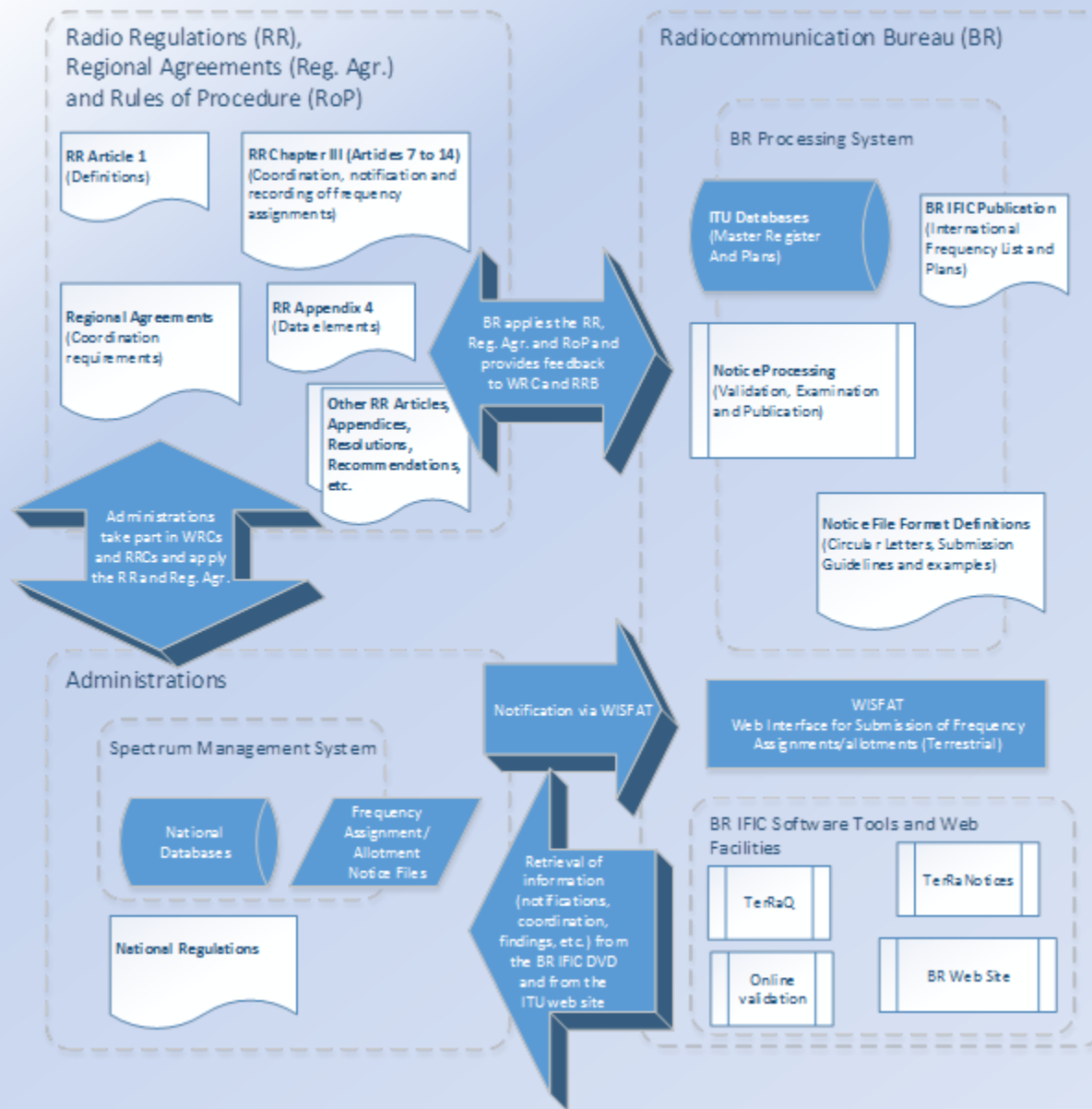




Notification Region 2



International Recognition – No. 8.3

- Why do you need international recognition?
 - Other administration have to take into consideration your assignment when they are making their assignments in order to avoid any harmful interference;

- Which assignments can claim international recognition?
 - Those assignments that are recorded in Master International Frequency Register (MIFR) with favorable findings (in accordance with the Radio Regulations);
 - Administrations rights and obligation

- How to enter the MIFR?
 - Administration must notify their assignments to the Radiocommunication Bureau (BR)

- All assignments should be notified?
 - No, only those that comply with Nos. 11.2 – 11.9



Which assignments to notify?



- Frequency assignments that **shall be notified** to the Bureau (Nos. 11.3 – 11.8):
 - Those capable of causing harmful interference to any service of another administration;
 - Used for International radiocommunication;
 - Subject to world or regional frequency allotment or assignment plan which does not have its own notification procedure;
 - Subject to the Art. 9 coordination procedure;
 - Request for international recognition;
 - For information only.

- Frequency assignments that **shall not be notified** to the Bureau (Nos. 11.14 – 11.5):
 - Assignments to stations in the amateur service;
 - Assignments to ship stations;
 - Assignments involving specific frequencies which are prescribed by these Regulations for common use by terrestrial stations of a given service.

Notification to the Bureau (1/4)

➤ What to Notify?

- For the recording of a frequency assignment in the Master Register:
 - Administrations shall provide the relevant characteristics listed in Appendix 4 to the RR (No. 11.15).
- For the modification of a given Plan:
 - Add, modify or suppress a planned frequency assignment;
 - Administrations shall provide the relevant characteristics listed in the Annexes of the relevant Agreement.
- Preface to the BR IFIC
 - Symbols and codes are defined for some data items, such as:
 - Class of station, Nature of service, etc.;

<http://www.itu.int/en/ITU-R/terrestrial/brific/Pages/default.aspx>

Notification to the Bureau (2/4)

➤ When to notify?

➤ For the recording of frequency assignment in the Master Register (MIFR), notices shall reach the Bureau:

- Not earlier than three years before the assignment is brought into use, for terrestrial stations involved in coordination with a satellite network and for high altitude platform stations operating as a base station to provide IMT;
- Not earlier than five years before the assignment is brought into use, for assignments to high altitude platform stations in the fixed service;
- Not earlier than three months before the assignment is brought into use, for all other terrestrial stations;
- Provision Nos. 11.24 – 11.26A.

Notification to the Bureau (3/4)

- **When to notify assignments that fall within planned bands?**
 - For the recording in the Master Register (MIFR) for assignments that fall within planned bands governed by World or Regional Agreements:
 - Only if there is a corresponding plan entry.
 - In case there is **no** corresponding plan entry:
 1. Submit a Plan modification notice to the BR;
 2. Wait for the Plan to be successfully modified;
 3. Notify the frequency assignment to the BR under Article 11.

Notification to the Bureau (4/4)

➤ How to notify?

- A notice for each frequency and for each station.
- Except, if the same frequency is re-used with the same technical characteristics many times within a given area:
 - ❑ A single notice giving the typical characteristics of one station of the network (RR11.17);
 - ❑ Does not apply to all services or to all frequency bands (Nos. 11.18 – 11.21B):
 - ❖ Station covered by Allotment Plans in Ap. 25, Ap.26 and Ap.27;
 - ❖ Broadcasting stations;
 - ❖ Terrestrial stations within the coordination area of an earth station, etc.

Notice types – Region 2

Notice types are grouped into three categories

Medium frequency bands for sound broadcasting:
T04

VHF and UHF frequency bands for sound and television broadcasting
T01, T02

Fixed, mobile and other terrestrial services:
T11, T12, T13, T14, T15, T16 and T17

Electronic notice(s) Format

```
<HEAD>  
t_adm=HNG  
</HEAD>
```

```
<NOTICE>  
t_ <NOTICE>  
t_ t_n t_notice_type=T12  
t_ t_d t_d_adm_ntc=2010-11-26  
t_ t_fr t_fragment=NTFD_RR  
t_ t_st t_freq_assgn=128.1500  
t_ t_pr t_station_id=AIR AMBULANCE  
t_ t_ac t_prov=RR11.2  
t_ t_ct t_adm_ref_id=SF22125  
t_ t_si t_ctry=HNG  
t_ t_d t_site_name=BUDAORS  
t_ t_is t_d_inuse=2010-08-01  
t_ t_na t_is_resub=False  
t_ t_ac t_nat_srv=OT  
t_ t_op t_addr_code=A  
t_ t_ac t_op_agcy=006  
t_ t_st t_action=ADD  
t_ t_en t_stn_cls=FD  
t_ t_b t_emi_cls=A3EJN  
t_ t_lo t_bdwidth_cde=6K00  
t_ t_la t_long=+0185956  
t_ t_op t_lat=+465959  
t_ t_op t_op_hh_fr=00:00  
t_ t_op t_op_hh_to=24:00
```

```
<ANTENNA>  
t_ <ANTENNA>  
t_ t_ <ANTENNA>  
t_ t_ t_pwr_xyz=Z  
t_ t_ t_pwr_ant=7  
t_ t_ t_pwr_dbw=4.8  
< t_ t_ t_pwr_eiv=E  
t_ < t_ t_ t_ant_dir=ND  
t_ t_ <RX_STATION>  
t_ t_ t_geo_type=CIRCLE  
t_ t_ t_long=+0185956  
< t_ t_ t_lat=+465959  
< < t_ t_ t_radius=300  
< < </RX_STATION>  
< < </ANTENNA>  
</NOTICE>
```

```
<TAIL>  
t_num_notices=3  
</TAIL>
```

Res. 906 (Rev. WRC-12):
All submission of notices for
terrestrial services to the BR shall
be in electronic format only.
2009: No paper notices.

The electronic notice file is a
structured text file.

Electronic notice(s) Format

<http://www.itu.int/en/ITU-R/terrestrial/tpr/Pages/Notification.aspx>

Guidance for Notification for terrestrial services

[YOU ARE HERE](#) [HOME](#) > [ITU-R](#) > [TERRESTRIAL SERVICES](#) > [TERRESTRIAL PUBLICATION AND REGISTRATION DIVISION \(TPR\)](#) > [GUIDANCE FOR NOTIFICATION FOR TERRESTRIAL SERVICES](#)

SHARE    

The main objective of the notification is to obtain international recognition by recording frequency assignments in the Master International Frequency Register (MIFR).

Any frequency assignment that may cause or receive interference to or from stations of other administrations shall be notified to the ITU in order to be recorded in the MIFR and obtain international recognition.

For this purpose, a notice must be submitted to the Bureau for each station or group of stations. As there are different types of stations, the Bureau has created different types of notices based on Appendix 4 to the Radio Regulations and the different Regional Agreements. These notices are grouped by service, frequency band and applicable region.

RELATED LINKS

CONTACT PERSON

- [Notification Tutorial](#)
- [Submission of notices](#)

VHF/UHF BROADCASTING

- VHF/UHF television and VHF sound broadcasting service (except television and sound broadcasting service governed by the GE08 Agreement)
- Broadcasting service governed by GE08 Regional Agreement

FIXED AND MOBILE

- Fixed and mobile (except fixed and mobile governed by the GE08 Agreement)
- Terrestrial services other than broadcasting governed by GE08 Agreement

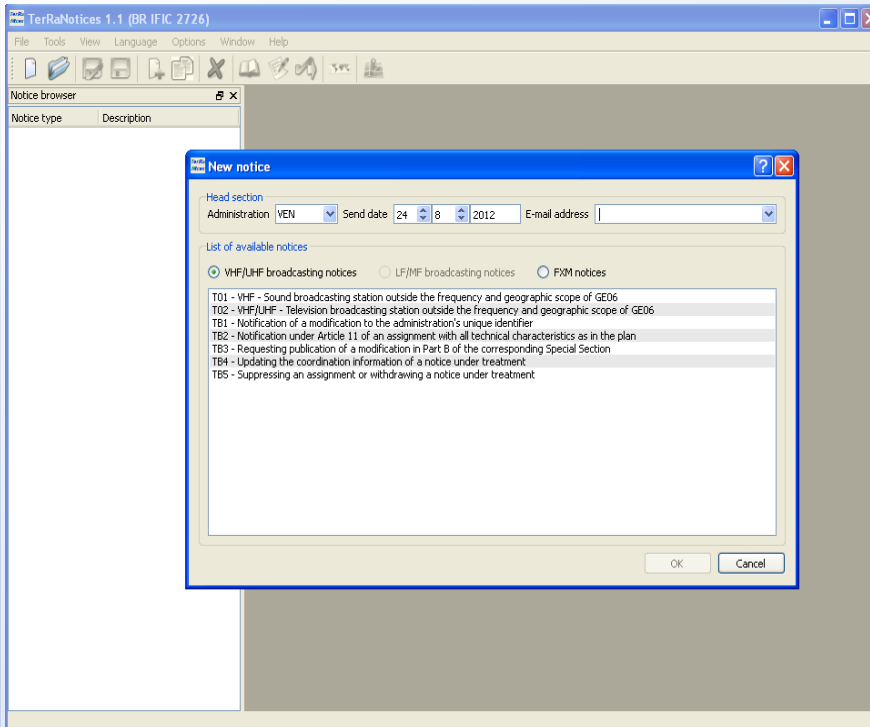
LF/MF BROADCASTING

- LF and MF sound broadcasting service in Regions 1 and 3 governed by the GE75 Agreement
- MF sound broadcasting service in Region 2 governed by the RJ81 Agreement

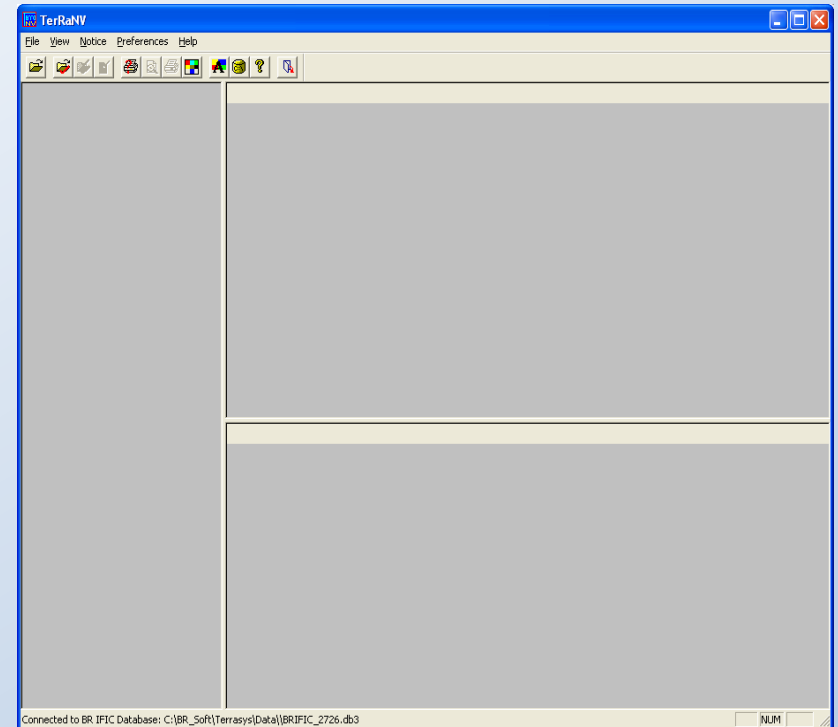
Additional information and descriptions can be found in the appropriate guidelines on this web page as well as samples of different notice types.

Creation and Validation

TerRaNotices



TerRaNV



Notice Validation



Online validation

➤ **New validation tool:**

- Deep validation such as checking the frequency band, geographical coordinates, potential duplicate notices, etc.
- Validation is done in batch mode so once the validation is completed the user is notified via an e-mail
- Beta testing, so your comments are most welcome.

<http://www.itu.int/ITU-R/terrestrial/OnlineValidation/Login.aspx>

Submission to the BR

➤ How to submit the notices to the Bureau?

➤ Secured web Interface:

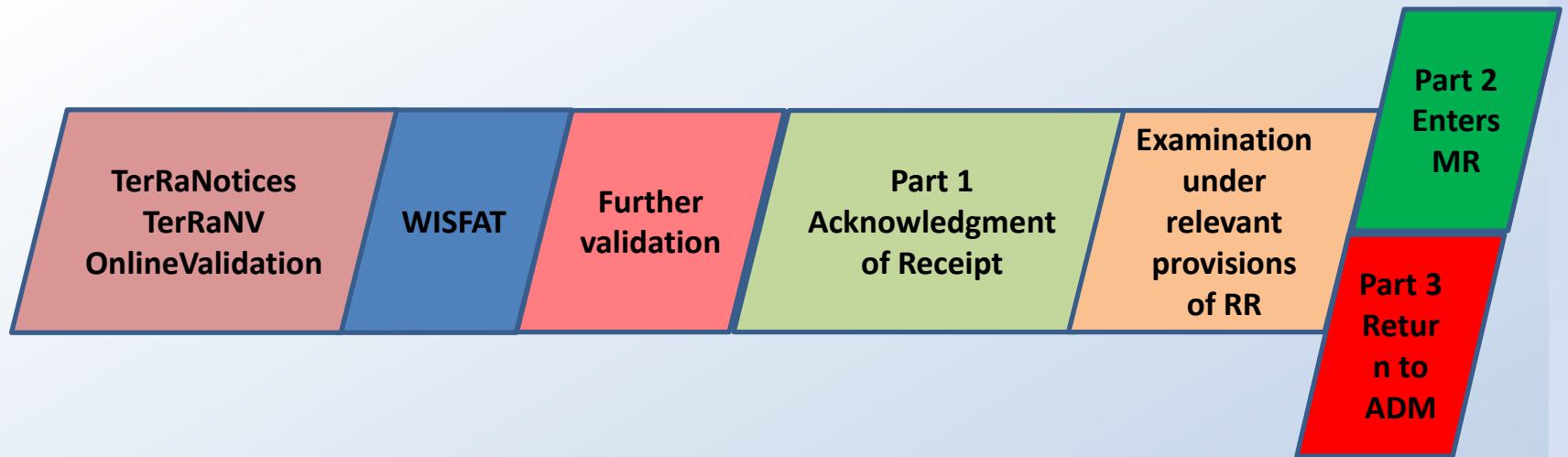
- WISFAT (Web Interface for the Submission of Frequency Assignments/Allotments for the Terrestrial Services);
- Immediate acknowledgement report to the notifier.

➤ Access to the WISFAT interface is restricted to registered TIES users selected by the administration as the national notifier(s):

- Official e-mail request (brmail@itu.int) must be sent to the BR from the administration:
 - ❖ Name, position, service e-mail, TIES Username;
 - ❖ As many as required;
 - ❖ Administration's responsibility to keep this notifiers database up to date;
 - ❖ Access to WISFAT:

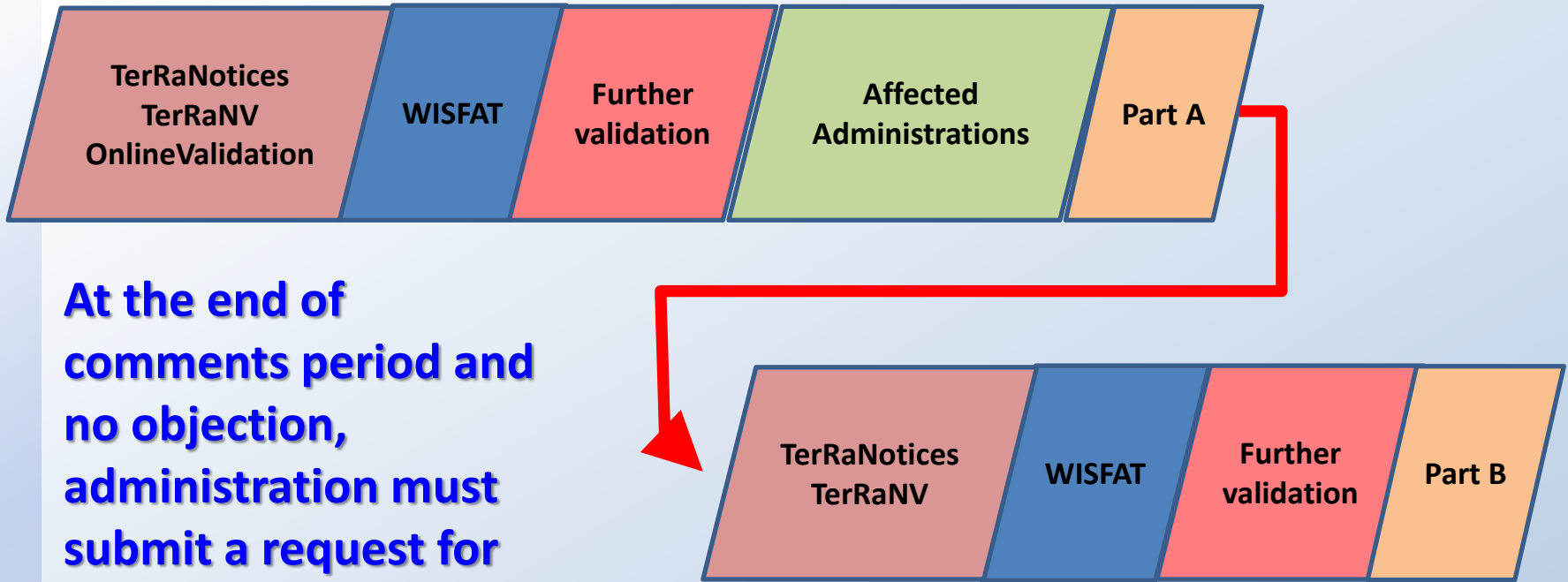
<http://www.itu.int/en/ITU-R/terrestrial/tpr/Pages/Submission.aspx>

Processing of notices: MIFR



Nos: 11.27 – 11.34

Processing of notices: Plans



At the end of comments period and no objection, administration must submit a request for publication in Part B (TB8)

Final Remarks

- Notification has two aspects:
 - ❑ Administration's obligation to apply the provisions of the Radio Regulations as it is an international treaty signed by all ITU Member States;
 - ❑ To claim for international recognition and rights.
- One of the main purposes of the Master Register is to reflect the exact use of the radio spectrum in your territory;
- It also reflects the use of various frequency bands, this information is taken into consideration during World Radiocommunication Conferences (WRCs), when services are looking for new allocations;
- It is important to notify and also to consult the BR IFIC to be aware of what is happening with regards to the use of the international radio spectrum.
- Therefore, **notification to the Bureau is very important.**



*Thank you for
your attention!*

ITU – Radiocommunication Bureau
Questions to brmail@itu.int or brtpr@itu.int