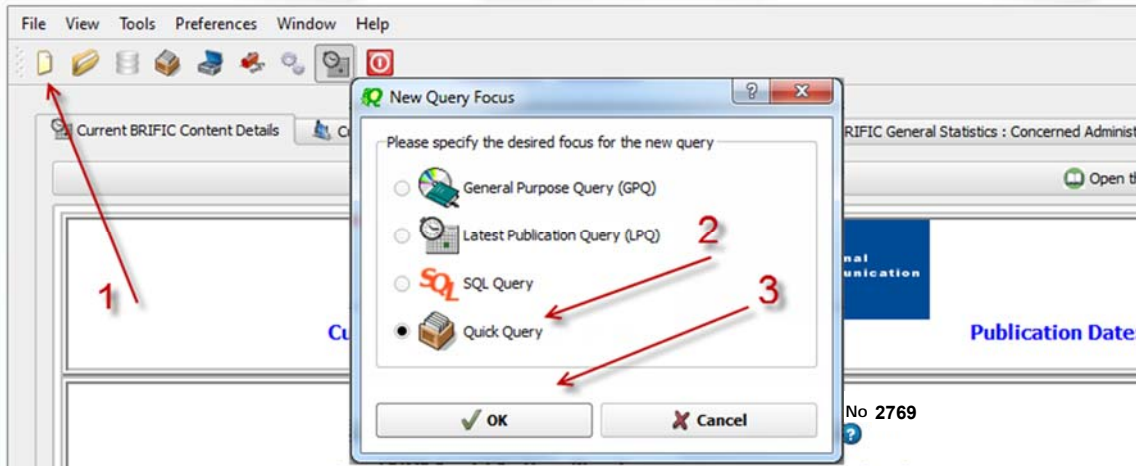


Solutions for the BR IFIC exercises

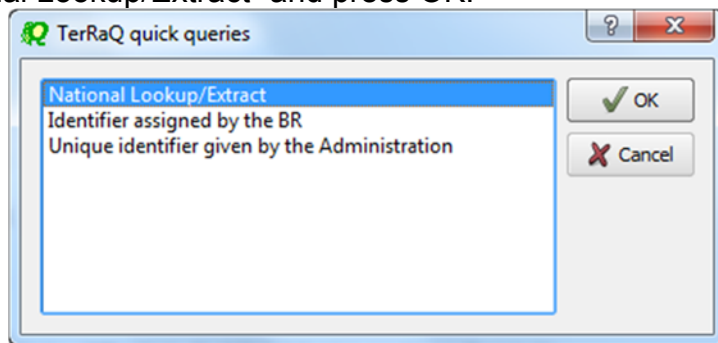
1. National extract

Retrieve all the assignments recorded in the MIFR on behalf of your Administration using the “Quick Query” option.

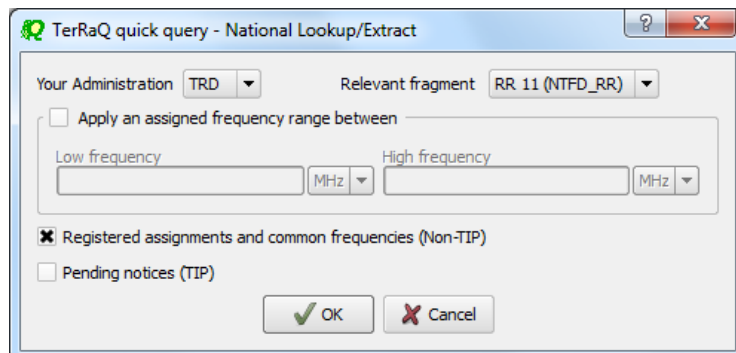
Solution: Click on the “New Query” button in the toolbar, select “Quick Queries” and press OK.



Then select “National Lookup/Extract” and press OK.



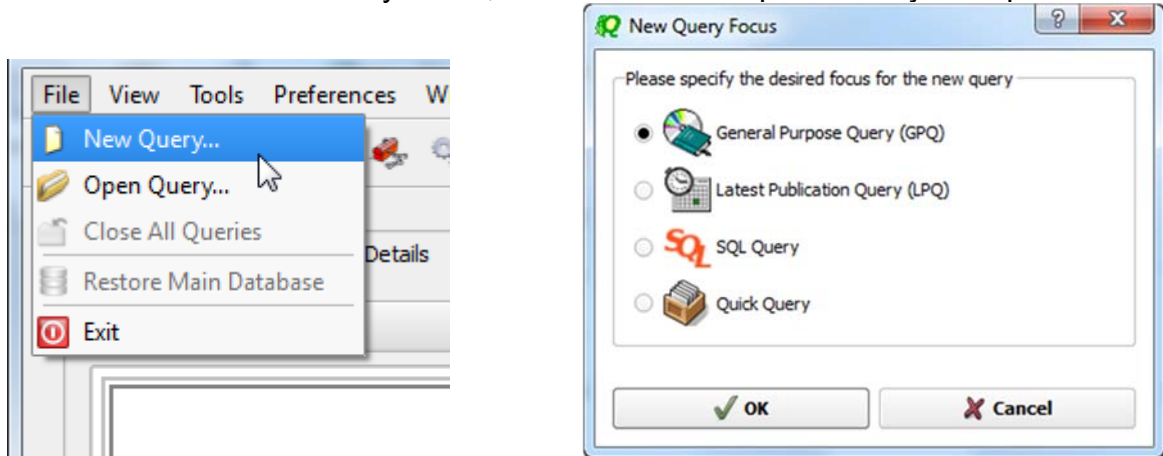
Select your Administration and clear the “Pending Notices (TIP)” check box at the bottom of the screen. Please note that the “Relevant Fragment” should be RR 11 (NTFD_RR). Press OK to execute the query.



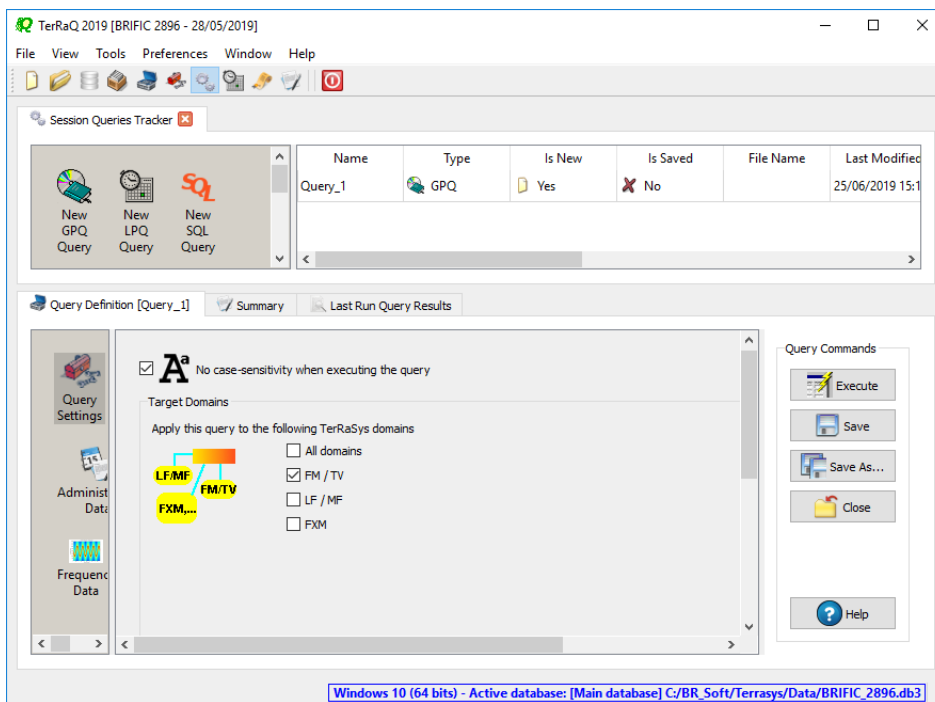
2. Pending notices

Retrieve all pending requests of modification of the GE06D Plan and check their coordination requirements.

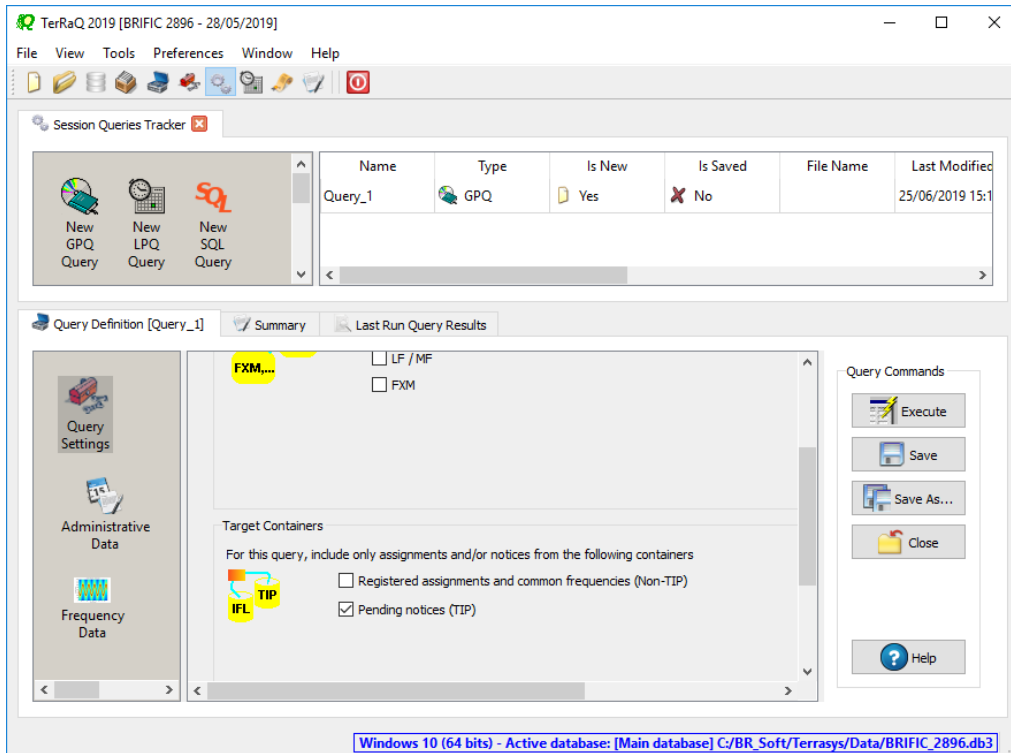
Solution: Select File->New Query menu, then “General Purpose Query” and press OK.



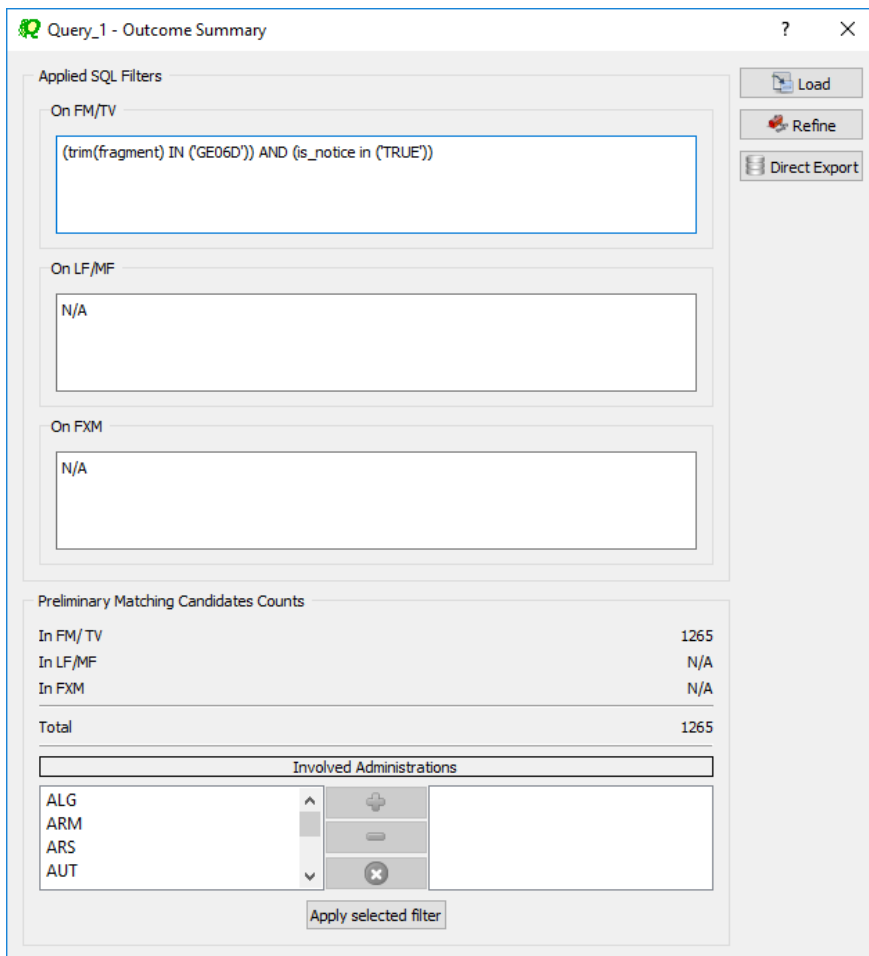
Select “FMTV” as GE06D is within the domain of FMTV.



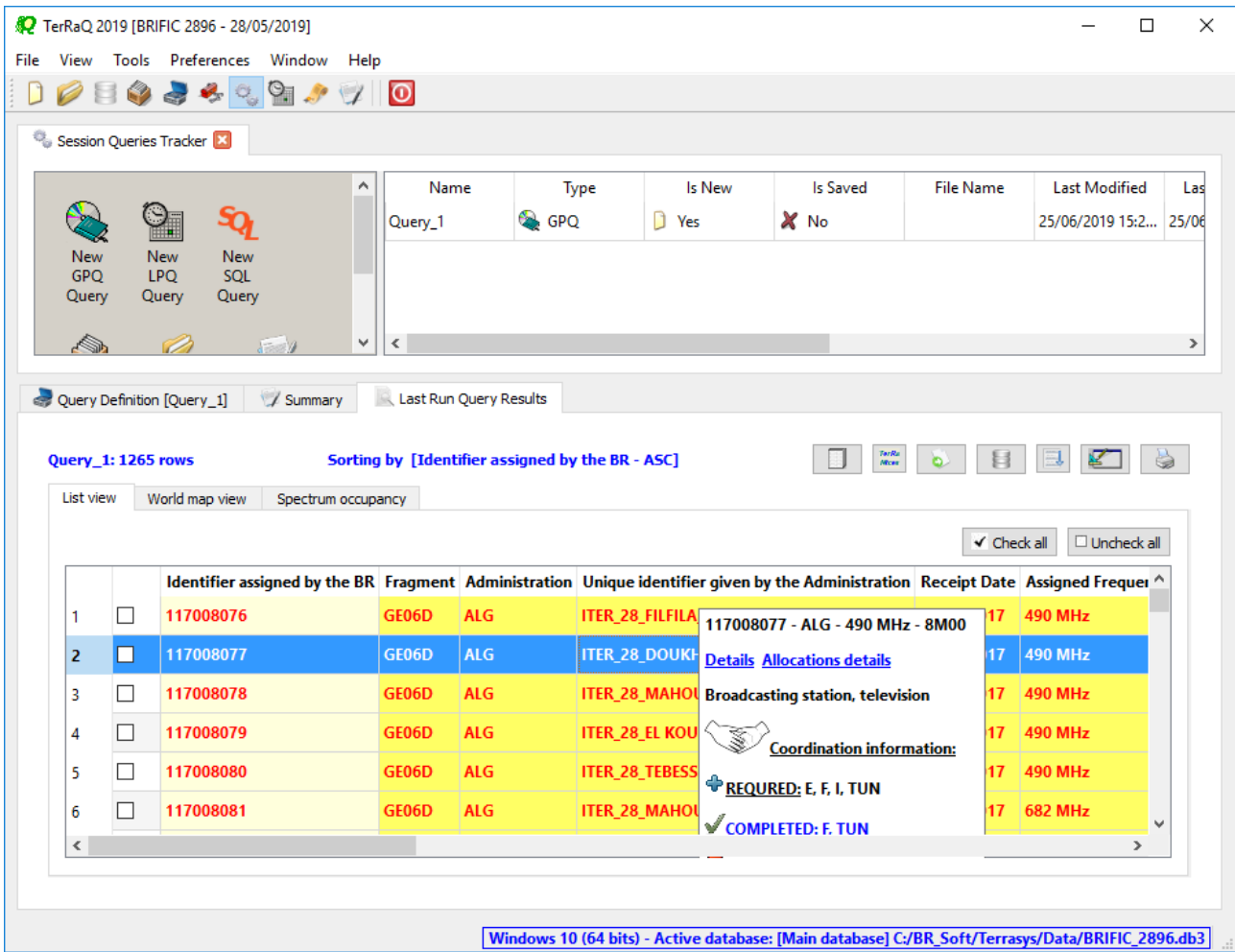
Unselect “Registered assignments and common frequencies (Non-TIP)”



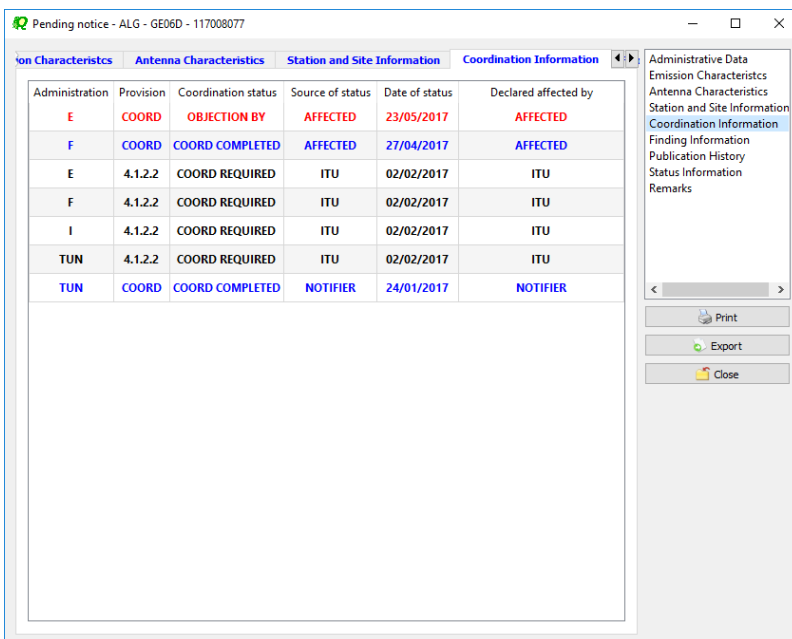
In “Administrative Data” screen, select in the “GE06D” in the “Fragment” tab and press “Execute” and then “Load” in the next screen.



Click on any line and move the mouse over it and you will see the coordination information.



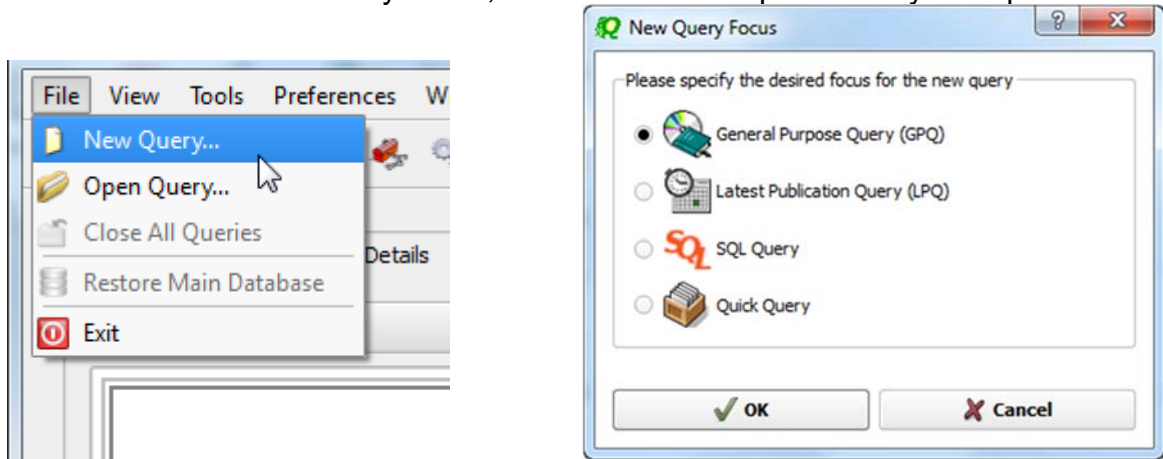
Or double click on any line and select the “Coordination information” screen and you will get the full coordination information.



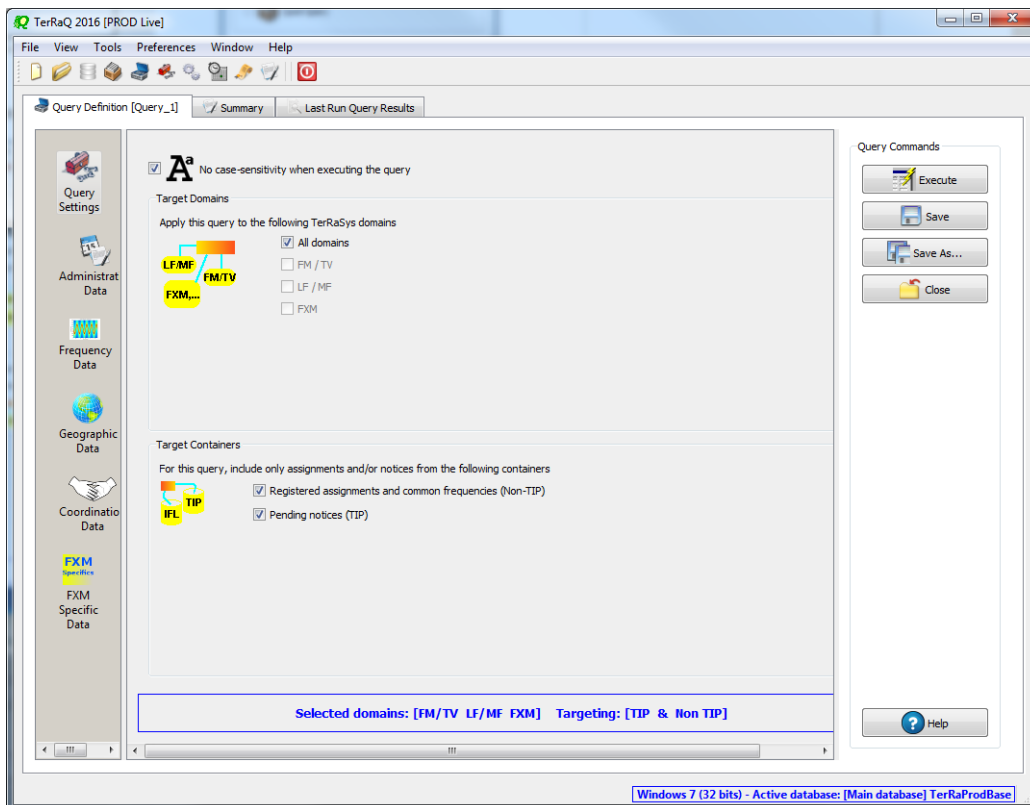
3. Search for a frequency assignment

Retrieve the frequency assignment with assigned frequency 674 MHz and geographical coordinates 20°00'31"E - 41°06'48"N using the "General Purpose Query".

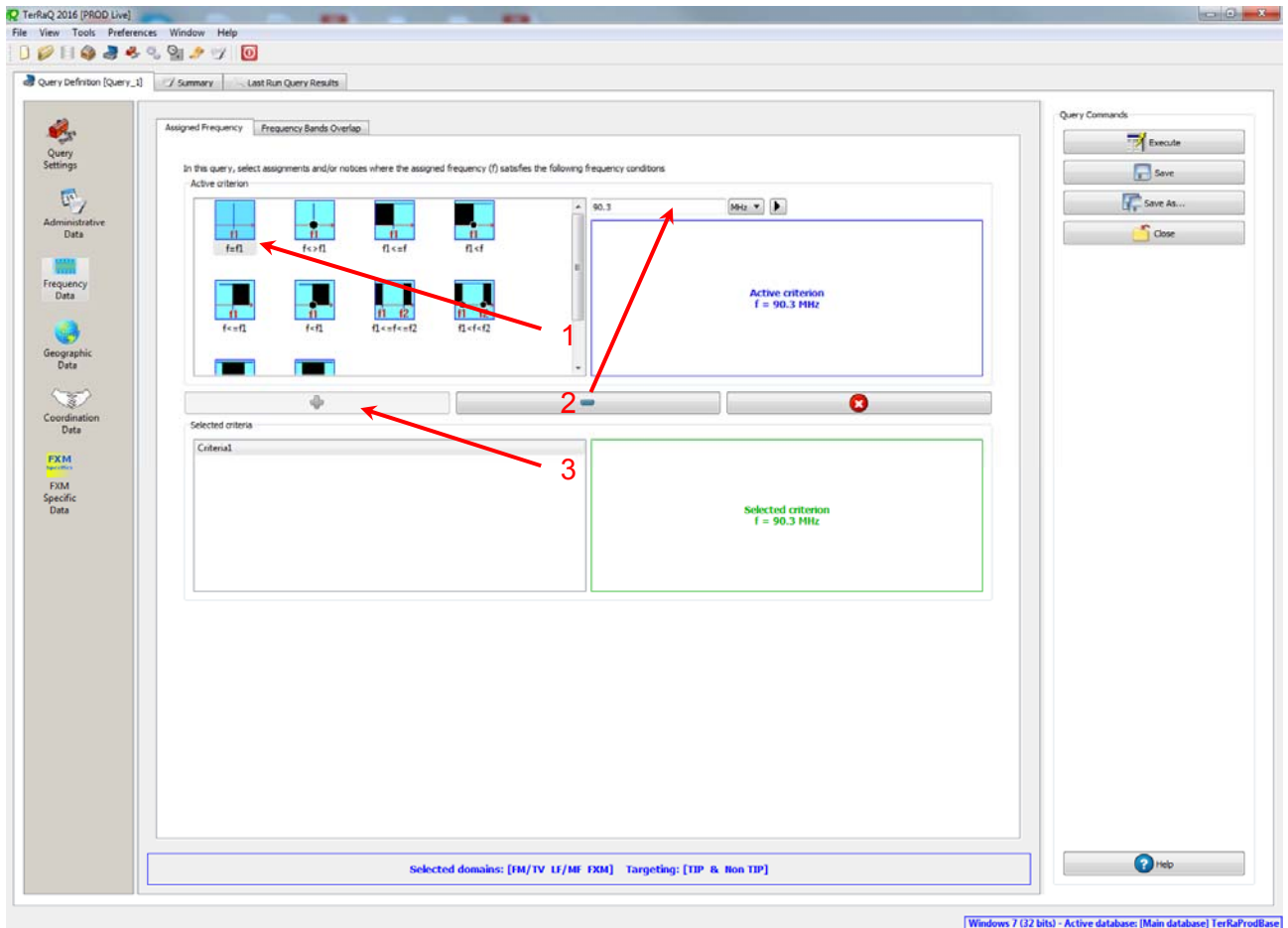
Solution: Select File->New Query menu, then "General Purpose Query" and press OK.



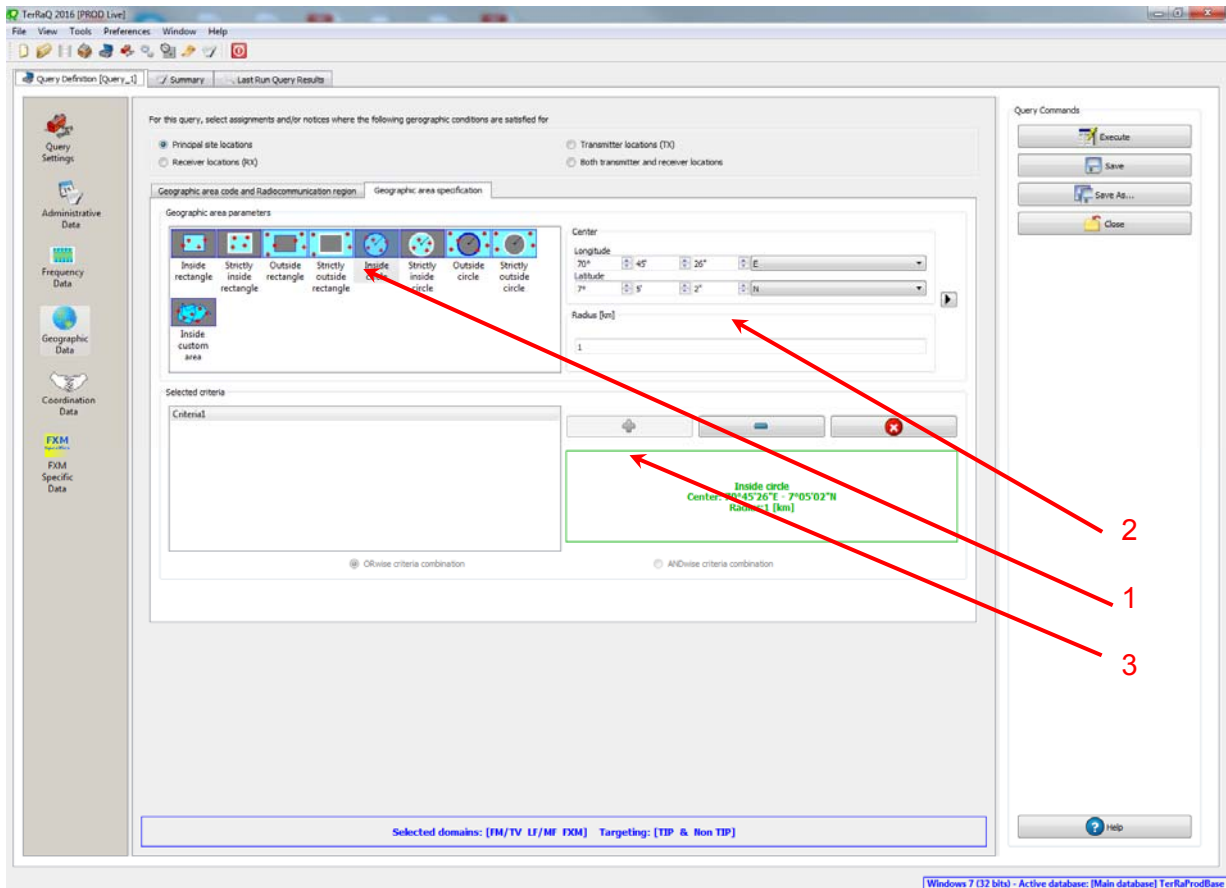
Select "All domains" in Query Settings as we don't know to which domain it belongs to.



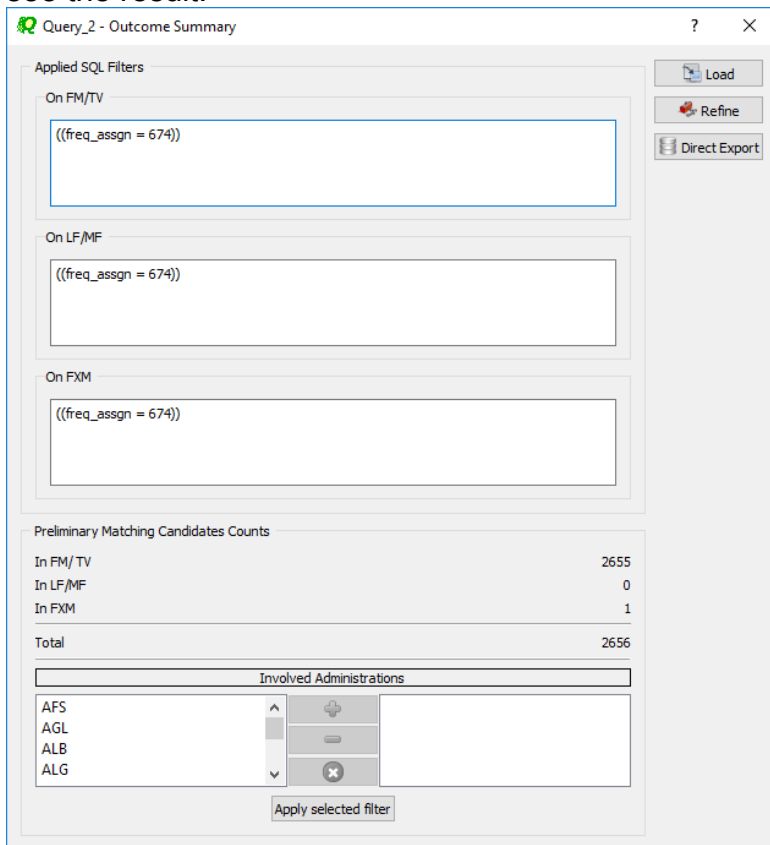
In Assigned Frequency screen under Frequency Data, select f=f1, then enter 674 in the frequency box, select "MHz" as the unit and press + button.



In Geographic Data screen, select “Inside circle”, then enter 20°00'31"E - 41°06'48"N in the Longitude and Latitude boxes and enter 1 in the Radius box and press + button.



Press Execute button to run the query and in the following screen click on Load button to see the result.

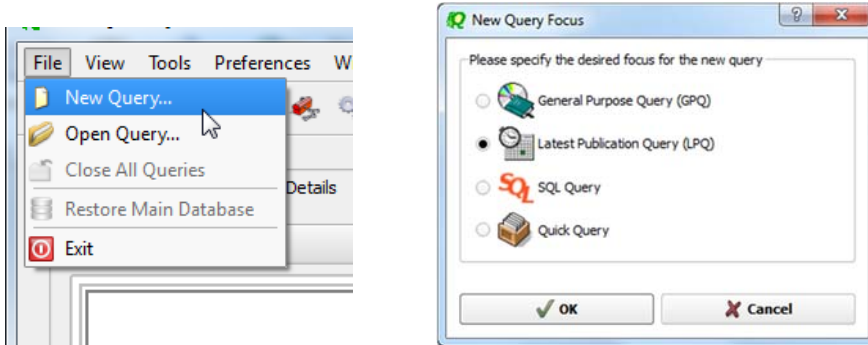


4. Latest publication query

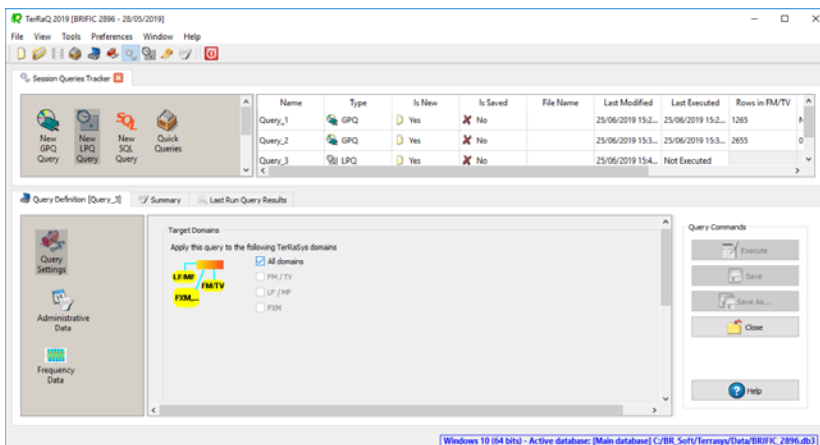
Retrieve all the frequency assignments of your Administration published by the Bureau in the latest BR IFIC.

- Indicate those published for acknowledgement of receipt

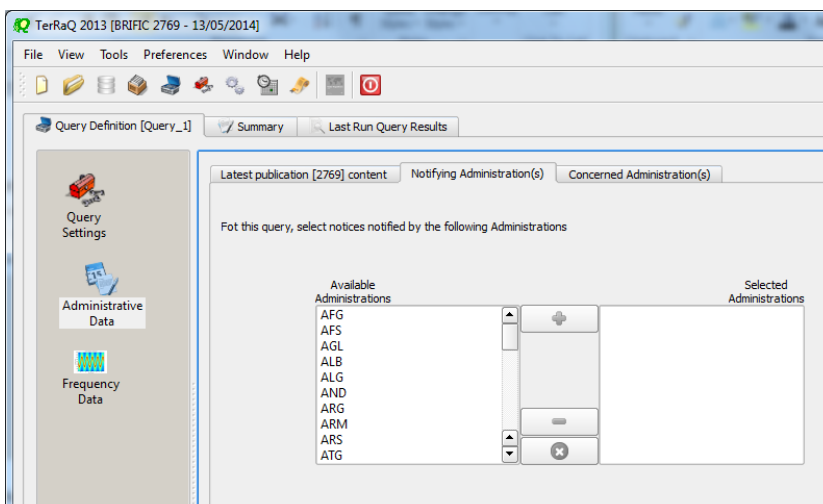
Solution: Create a new LPQ query through the menu item of File->New Query.



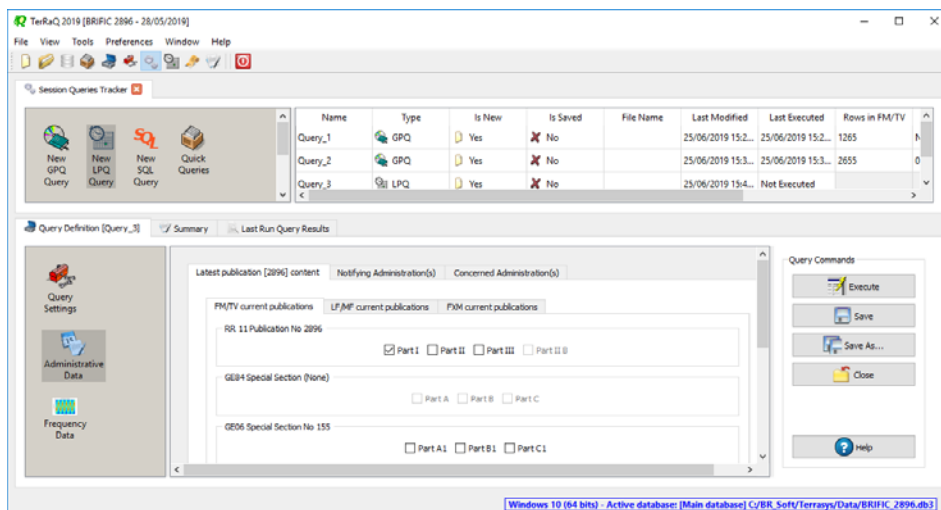
We can see that all domains are available, this means that there are publication in all domains. Sometimes it isn't the case. Select "All domains"



Select your Administration under "Administrative Data".

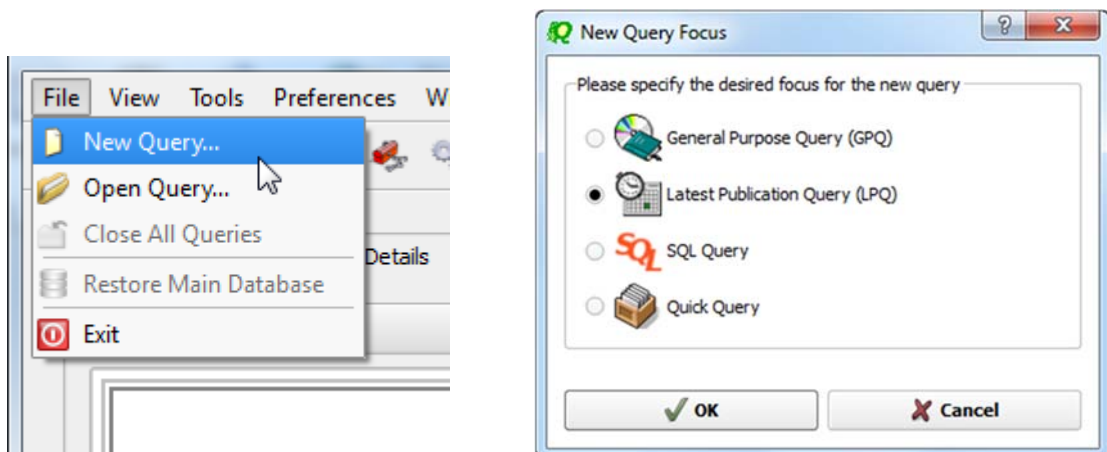


In the “Administrative Data” select only “Part I” in the box of “RR 11” under “FM/TV current publications”, “LF/MF current publications” and “FXM current publications”. Now press “Execute” to see the result.

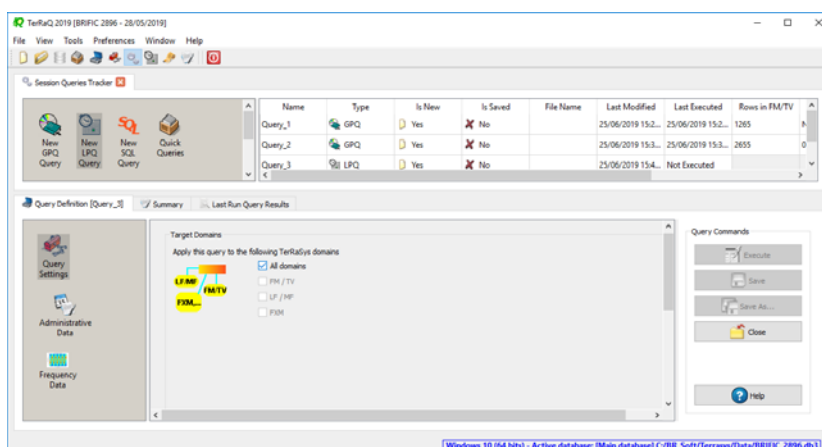


- Indicate those which are going to be recorded in the Master Register.

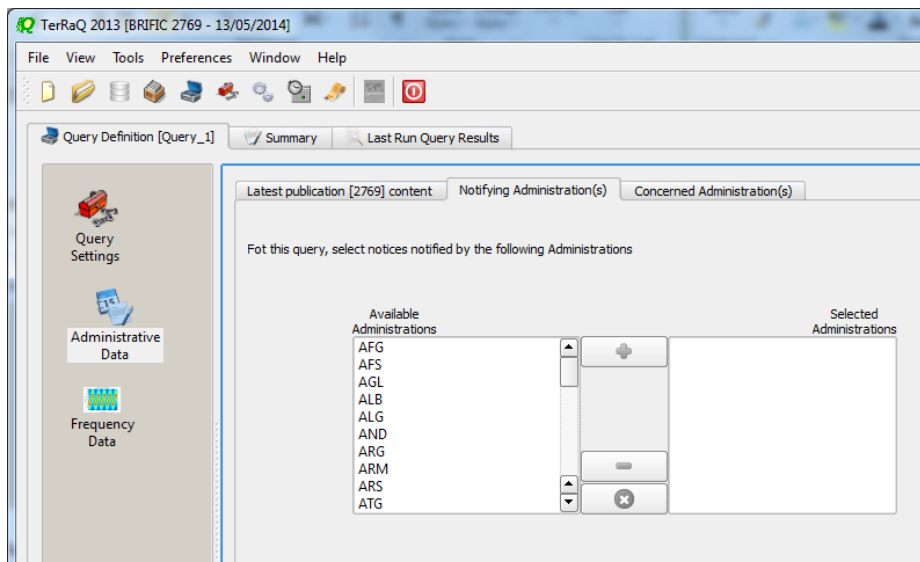
Solution: Create a new LPQ query through the menu item of File->New Query.



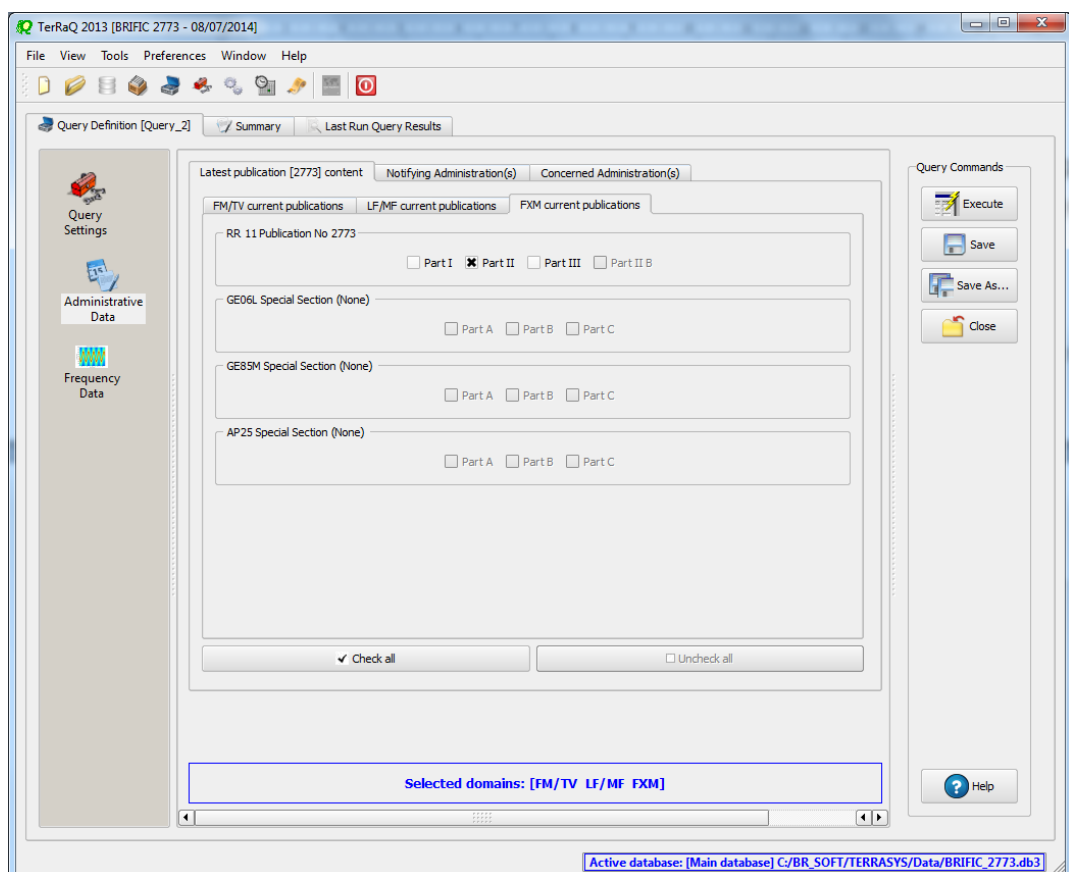
Select all “Target Domains”.



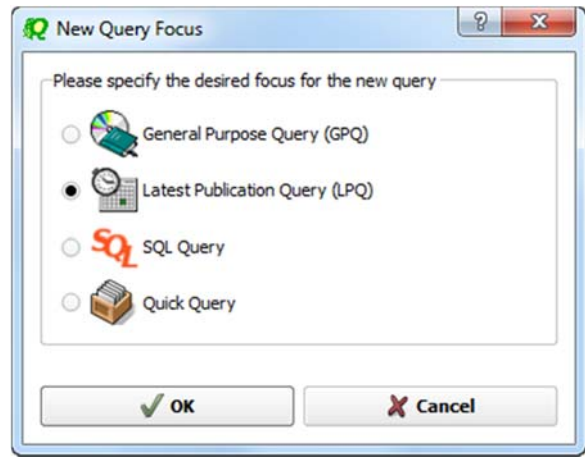
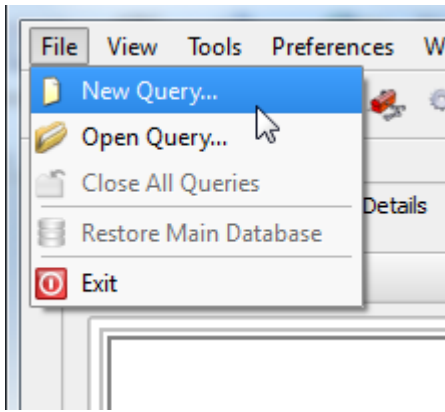
Select your Administration under “Administrative Data”.



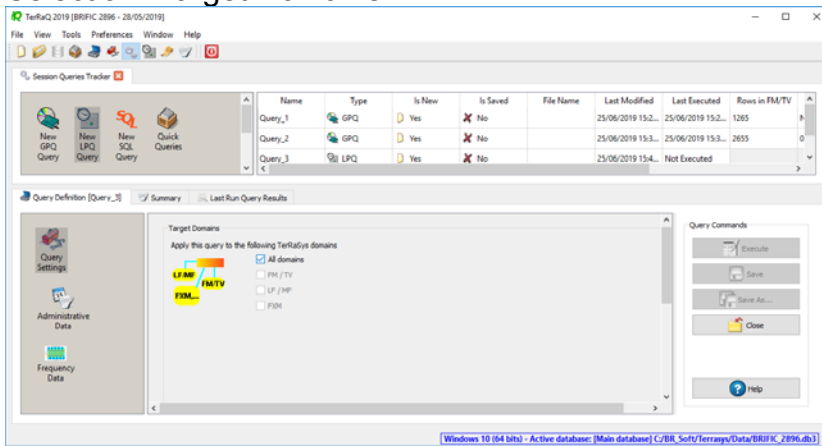
In the “Administrative Data” select only “Part II” in the box of “RR 11” under “FM/TV current publications”, “LF/MF current publications” and “FXM current publications”. Now press “Execute” to see the result.



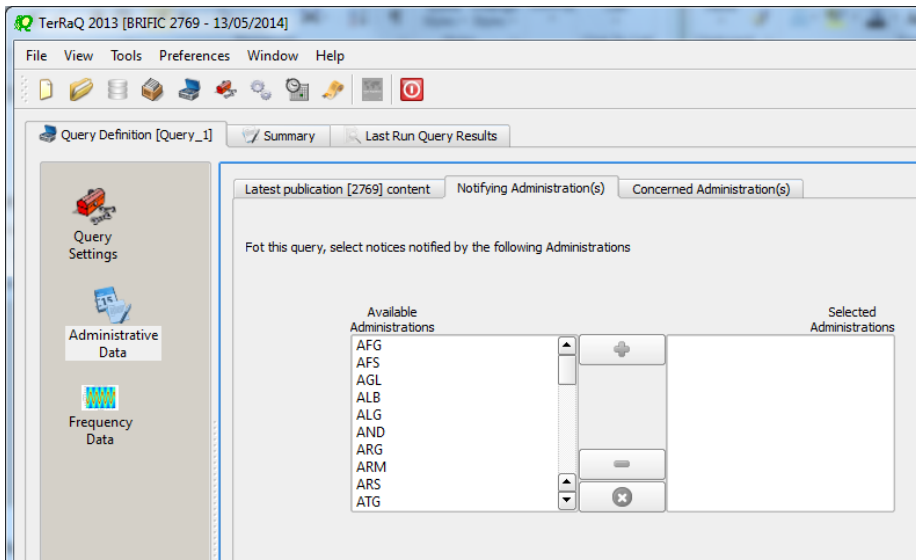
- Indicate those for which the Bureau has formulated an unfavourable finding.
Solution: Create a new LPQ query through the menu item of File->New Query.



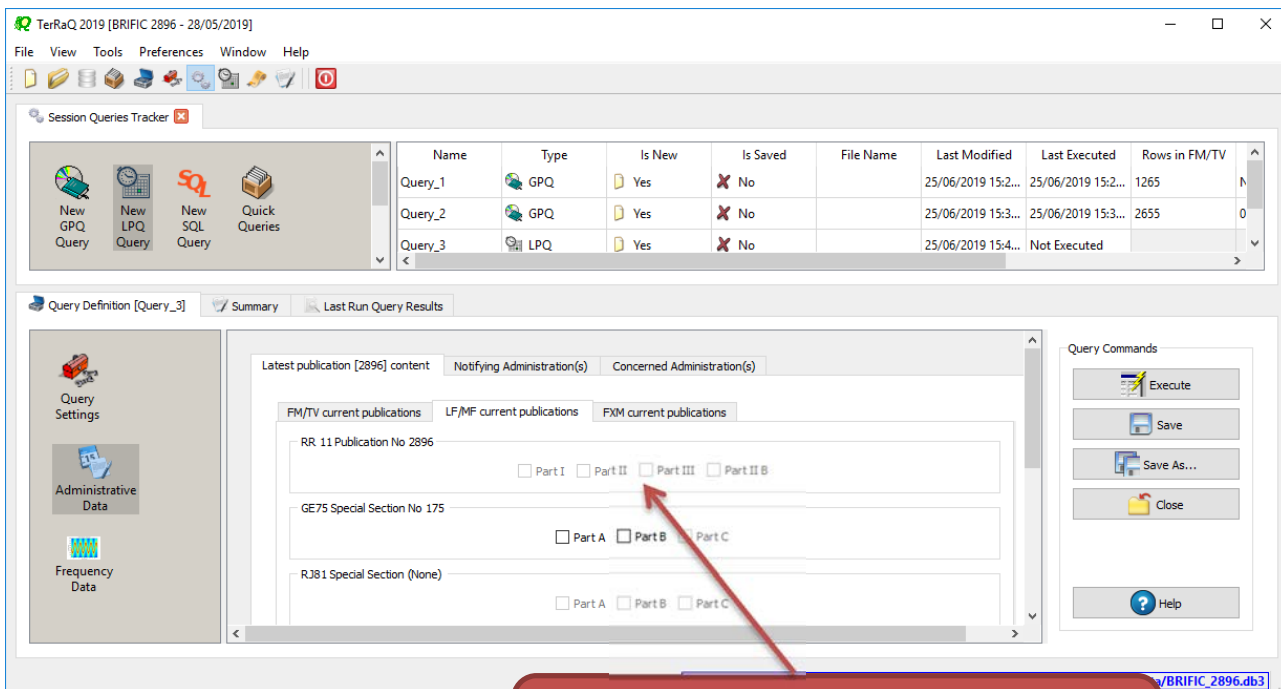
Select all "Target Domains".



Select your Administration under "Administrative Data".



Then in the “Administrative Data” select only “Part III” under “FMTV current publications”. Now press “Execute” to see the result.

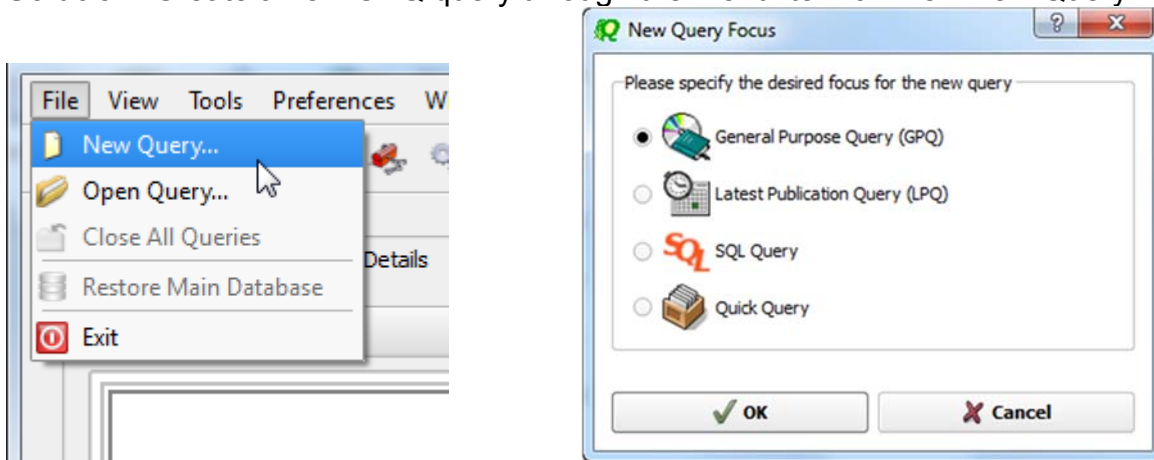


As there are no LFMF entries in Part III of this publication of the BR IFIC, this check box is disabled for LFMF domain.

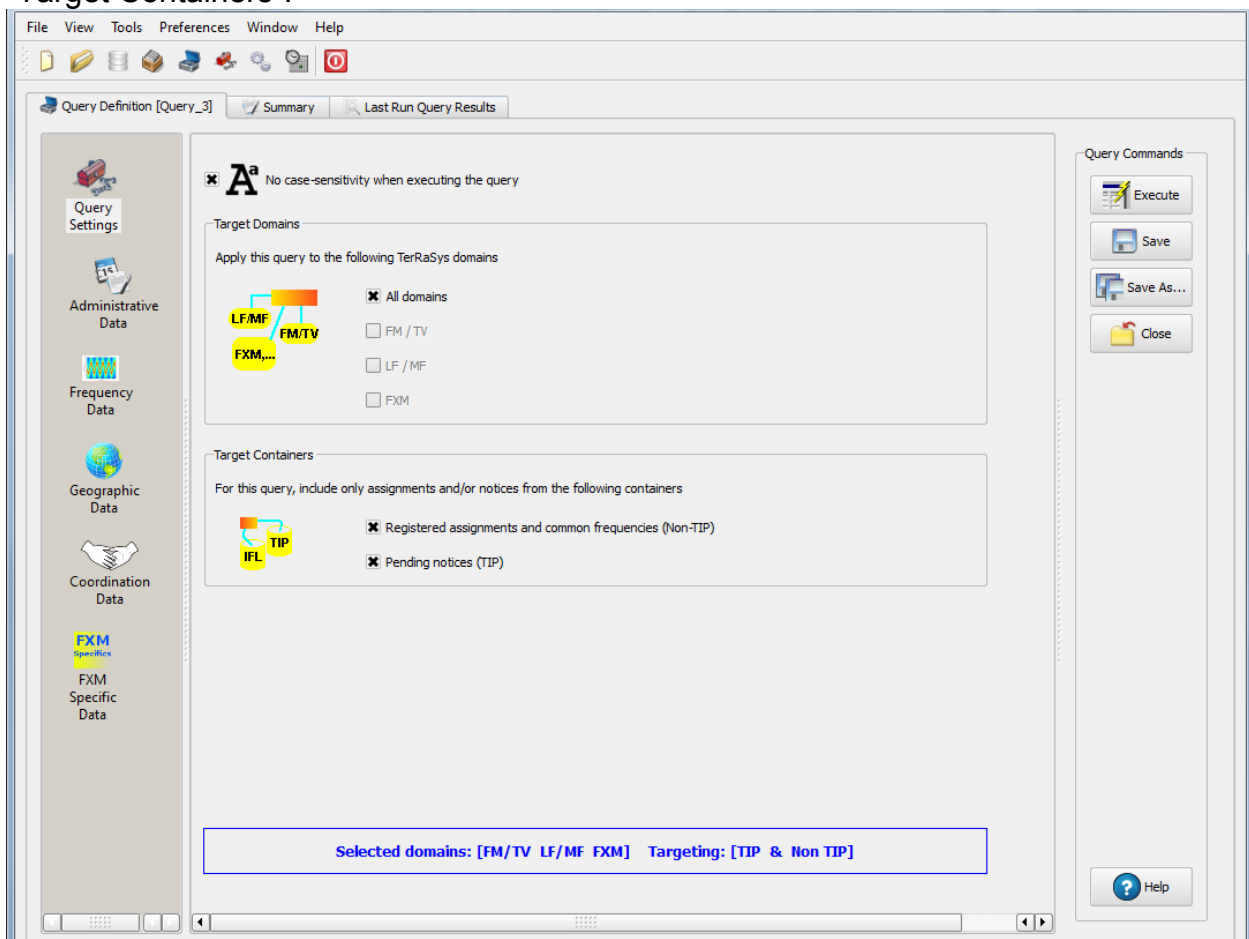
5. Notification to the BR for registration in the Master Register during year 2018

Retrieve all the assignments notified by your Administration, for registration in the **Master Register**, during 2018.

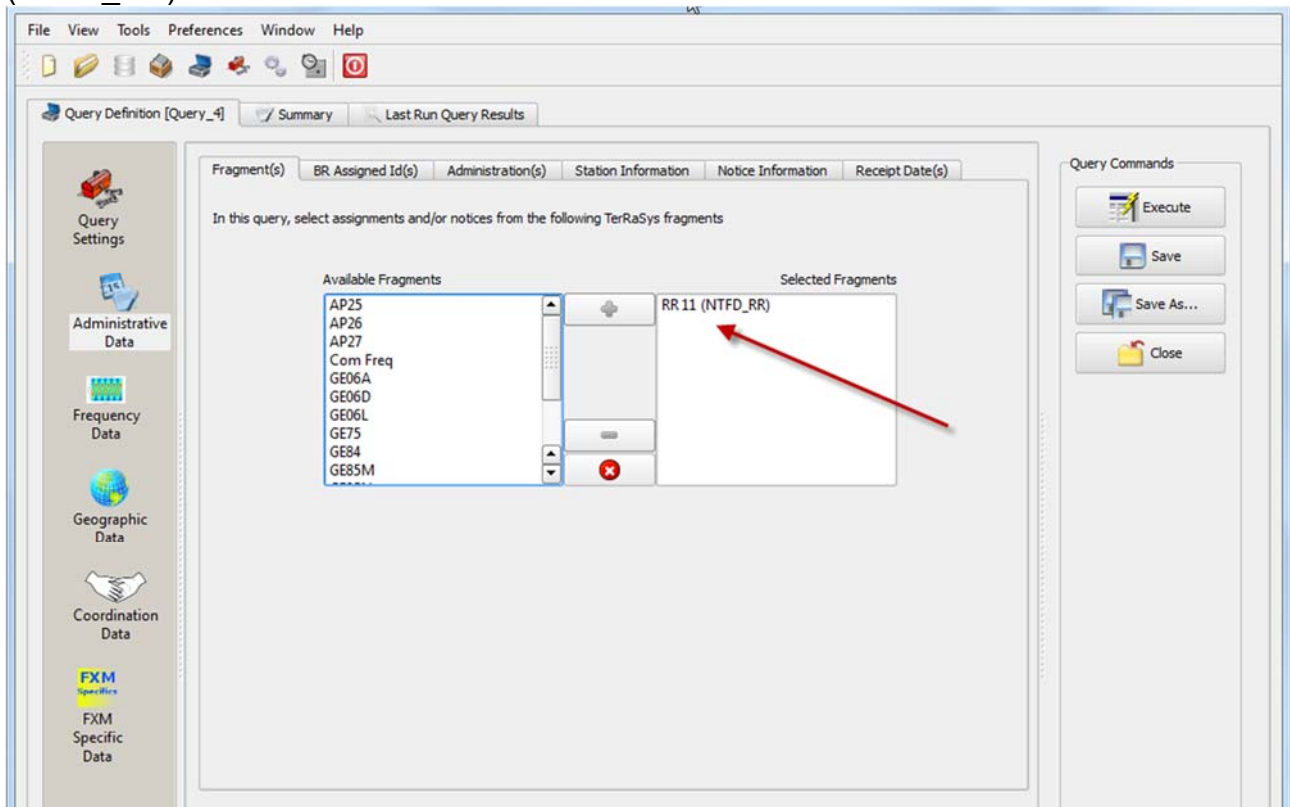
Solution: Create a new GPQ query through the menu item of File->New Query.



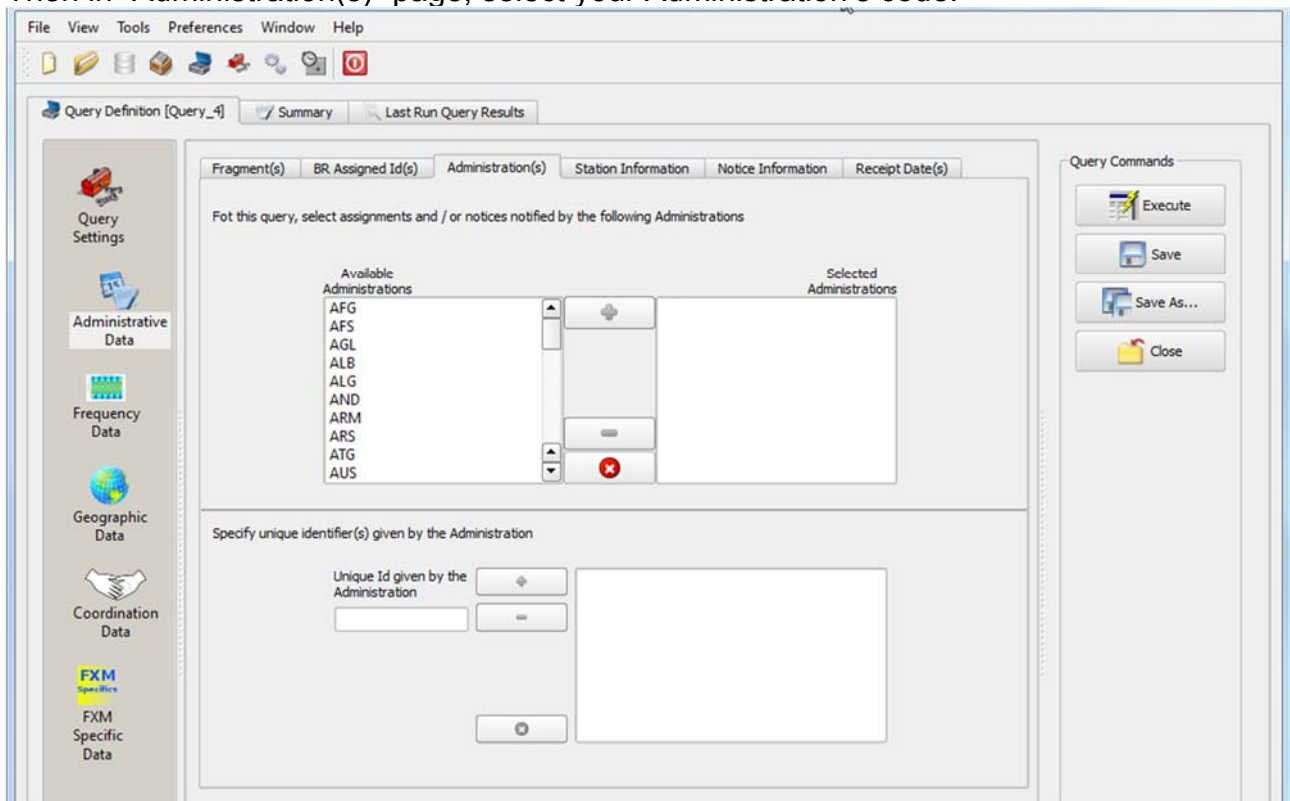
Select “All domains” as the target domain and make sure to select both check boxes in the “Target Containers”.



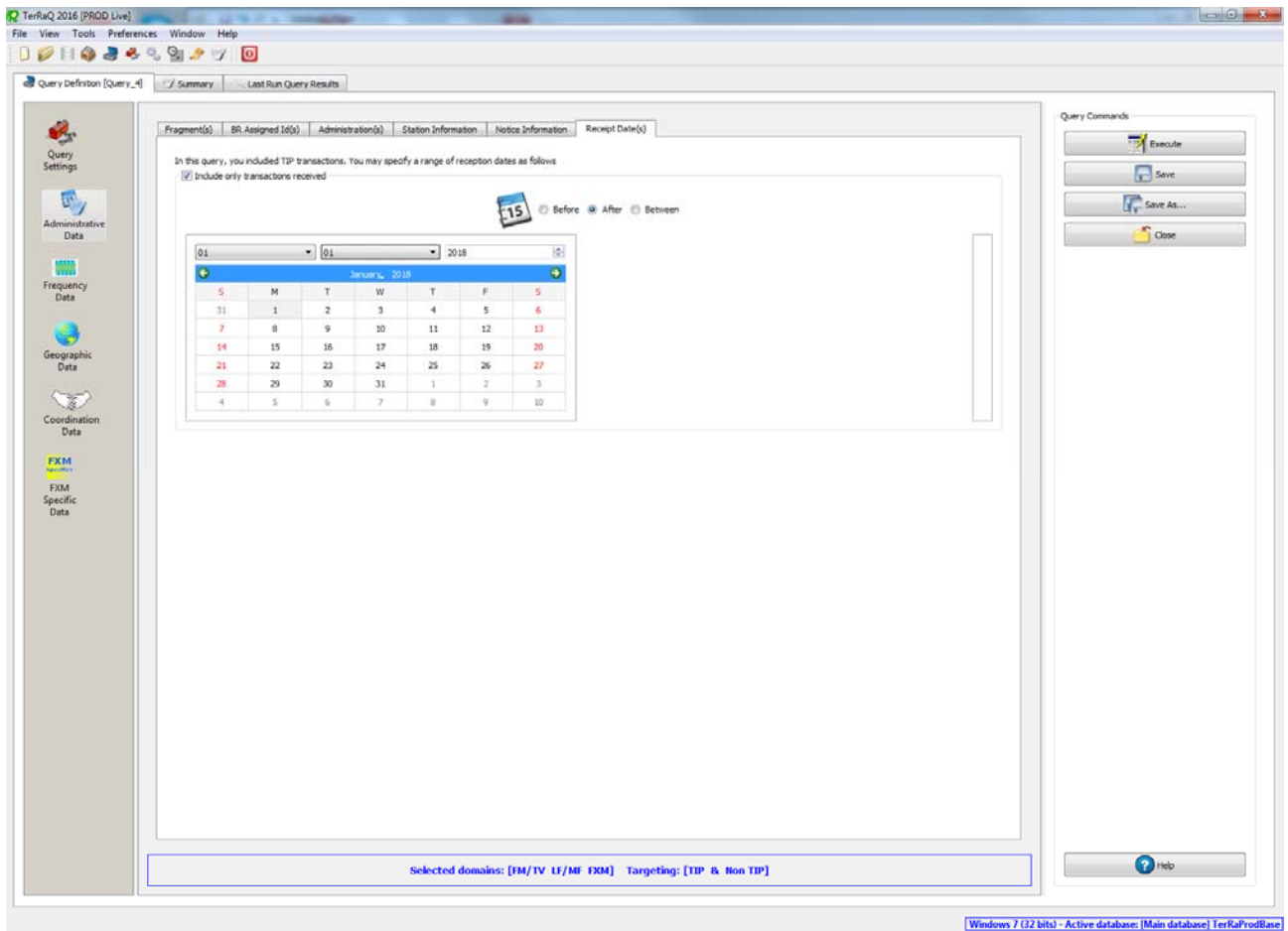
Then under “Administrative Data” and in the “Fragment(s)” page, select “RR 11 (NTFD_RR)”.



Then in “Administration(s)” page, select your Administration’s code.



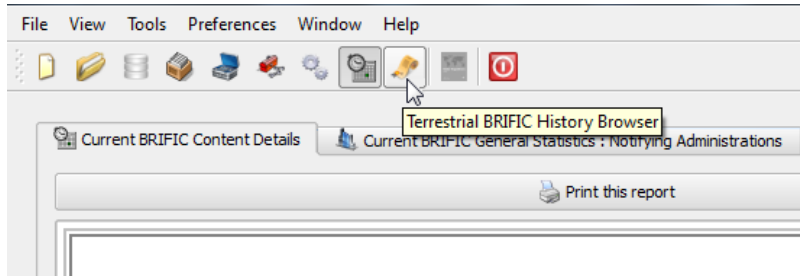
In the “Receipt Date(s)” page, select the check box of “Include only transactions received” then select “After” and enter 01/01/2018 as the date. Execute the query.



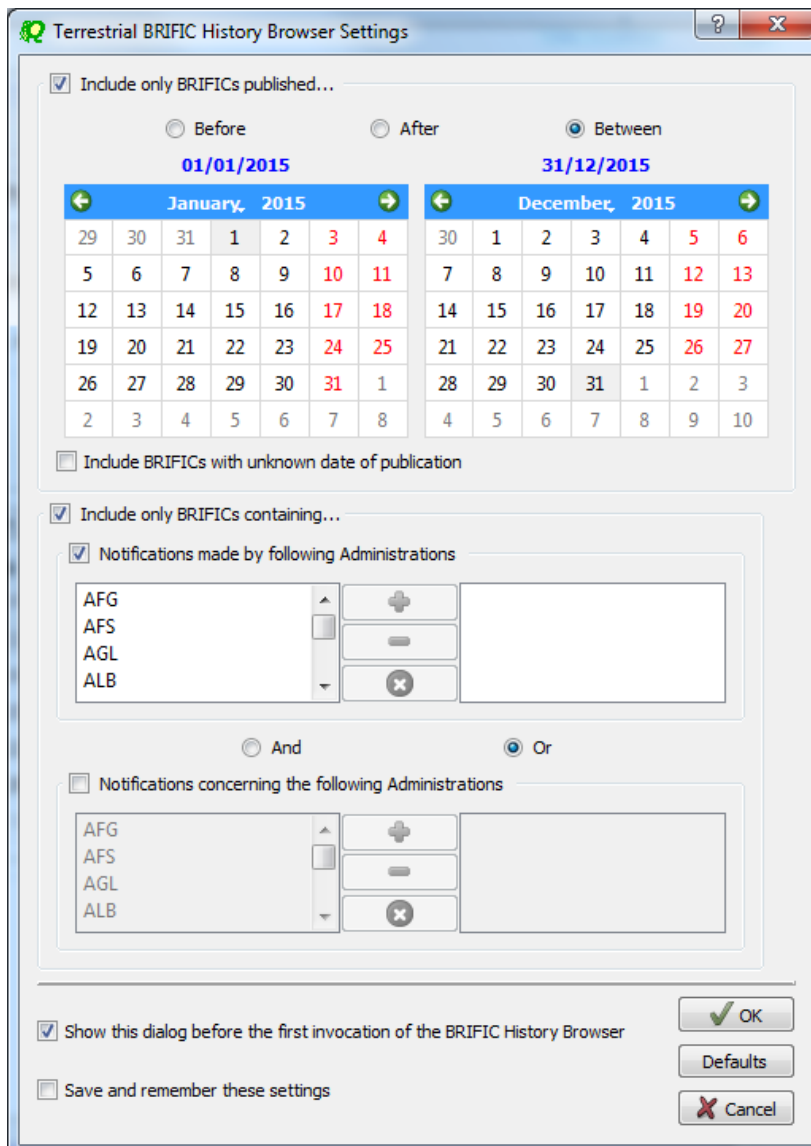
6. BR IFIC history check

Retrieve all BR IFICs published in 2015 containing notifications submitted by your Administration.

Solution: Click on the “Terrestrial BR IFIC History Browser” button on the toolbar.



At the top of the screen select the date between 01/01/2015 and 31/12/2015 in the boxes below it and select your Administration as the notifying Administration. It should be noted that you need to click on the day in each date grid to get the date set

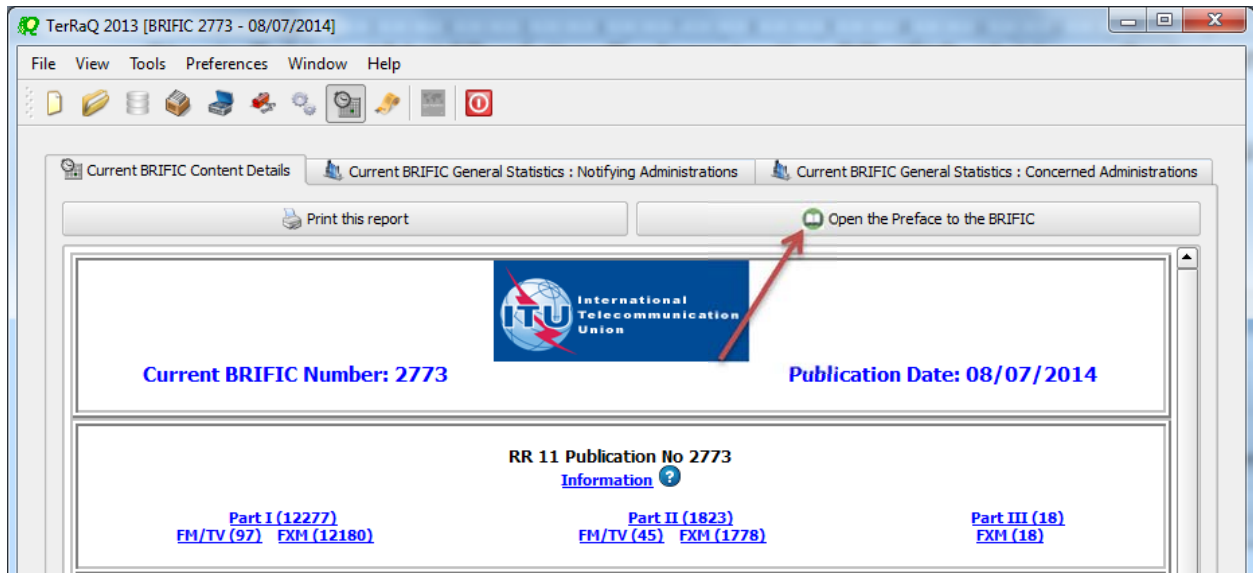


7. Update Tables 12A/12B of the Preface to the BR IFIC

Check Tables 12A/12B of the Preface to the BR IFIC (Address Codes and Operating Agencies)

Should there be any changes/suppressions, communicate them to the Bureau.

Solution: Open the Preface to the BR IFIC.



Go to Chapter IV, Section 3 “Address Codes and Operating Agencies” and check the entries under the name of your Administration.

