

Exercises using the BR IFIC DVD

1. National extract

Retrieve all the assignments recorded in the MIFR on behalf of your Administration using the “Quick Query” option.

2. Pending notices

Retrieve all pending requests of modification of the GE06D Plan and check their coordination requirements.

3. Search for a frequency assignment

Retrieve the frequency assignment of 11.075 GHz with geographical coordinates 24°52'37"E - 28°17'56"S using the “General Purpose Query”.

4. Latest publication query

Retrieve all the frequency assignments of your Administration published by the Bureau in the latest BR IFIC.

- Indicate those published for acknowledgement of receipt
- Indicate those which are going to be recorded in the Master Register.
- Indicate those for which the Bureau has formulated an unfavourable finding.

5. Notification to the BR for registration in the Master Register in 2018

Retrieve all the assignments notified by your Administration, for registration in the **Master Register**, in 2017.

6. BR IFIC history check

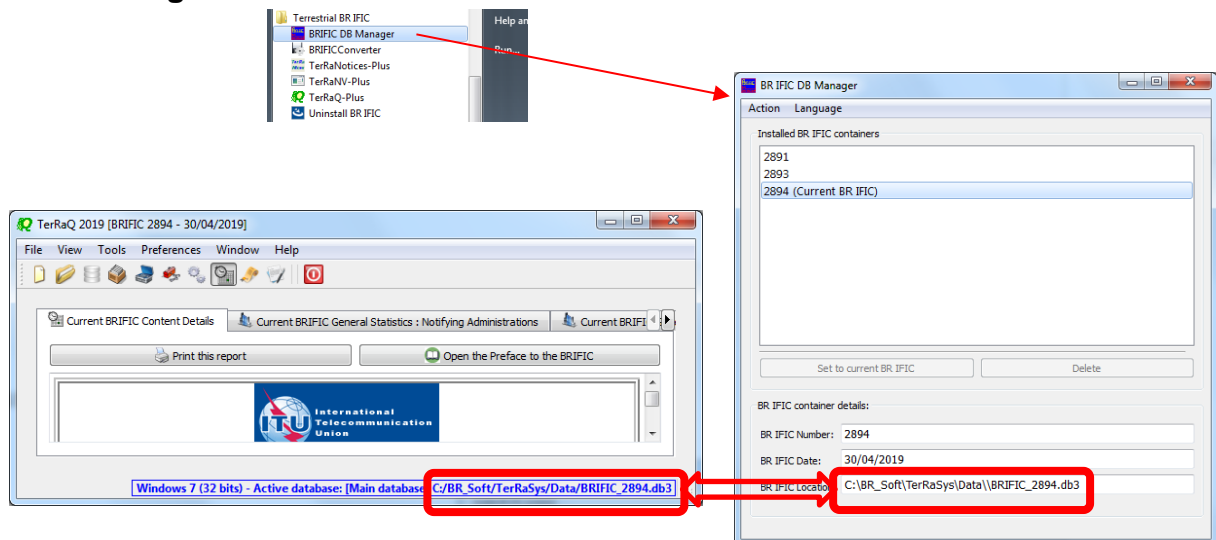
Retrieve all BR IFICs published in 2017 containing notifications submitted by your Administration.

7. Update Tables 12A/12B of the Preface to the BR IFIC

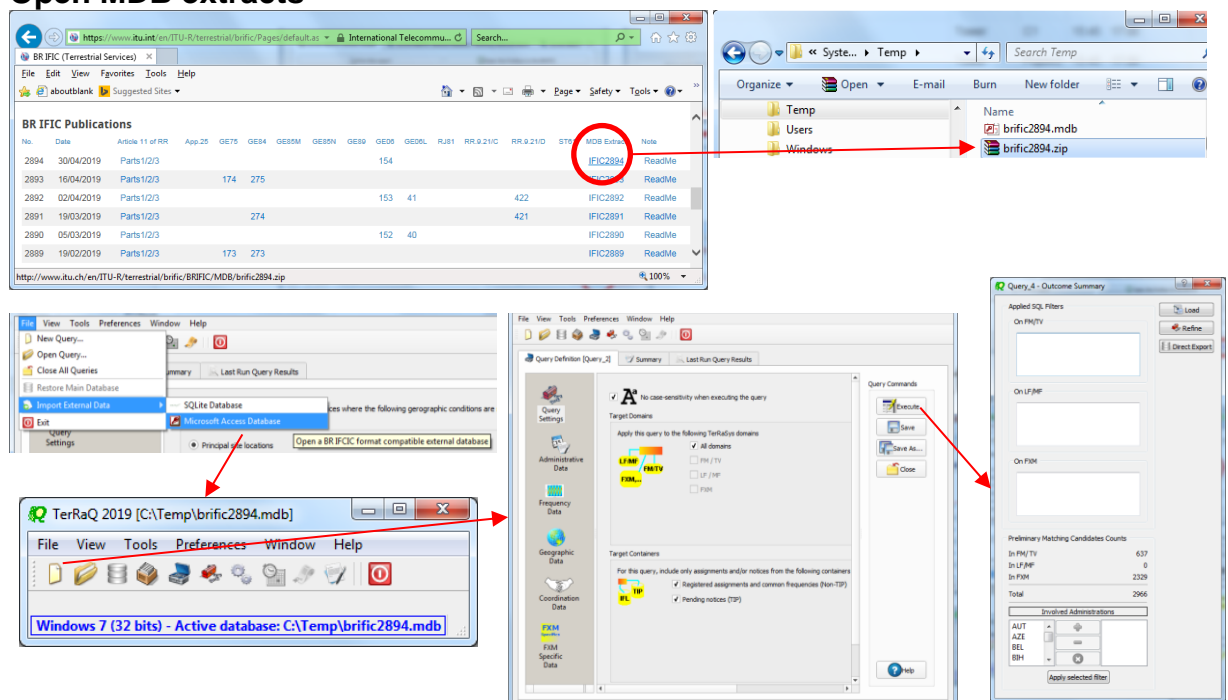
Check Tables 12A/12B of the Preface to the BR IFIC (Address Codes and Operating Agencies)

Should there be any changes, communicate them to the Bureau (BRMail@itu.int).

8. DB Manager tool



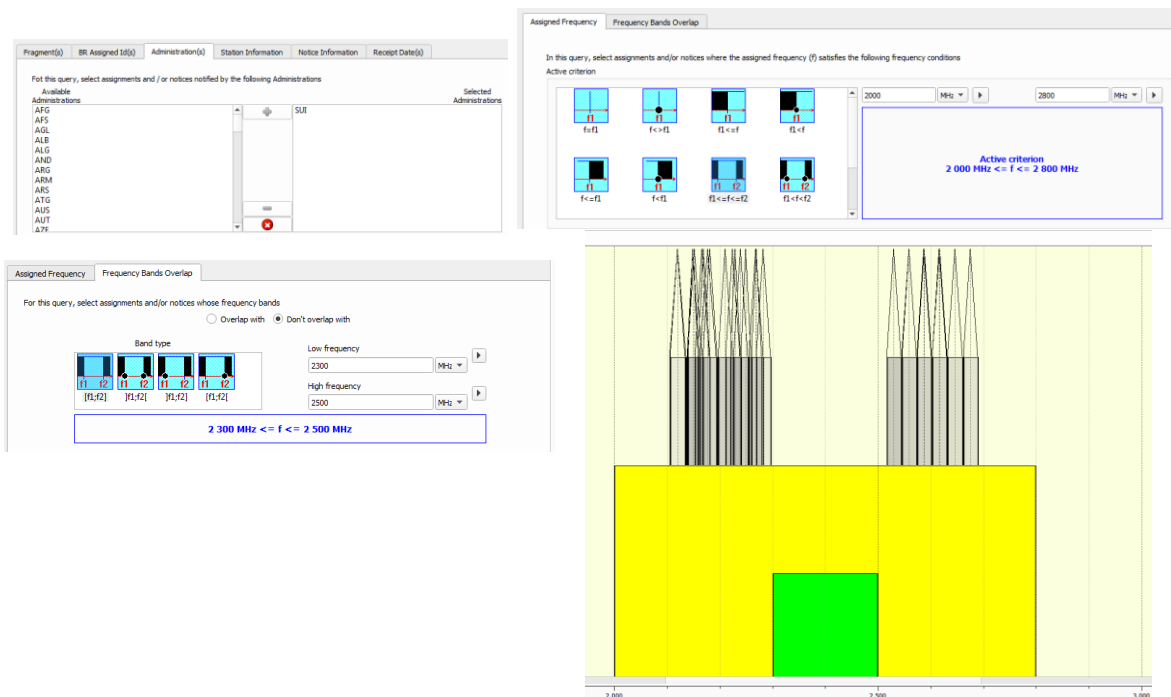
9. Open MDB extracts



10. Special query

Frequency Bands Overlap:

Query for SUI assignments in the band 2 000-2 800 MHz excluding the band 2 300-2 500 MHz.



SQL Query:

Example:

`select count(*) from fmtv_terra where fragment="NTFD_RR" and intent="RECORDED"`

11. Geographic Files Editor tool

