

International Telecommunication Union



REGIONAL  
RADIOCOMMUNICATION  
SEMINAR FOR AFRICA 2013

**YAOUNDE, CAMEROON  
16-20 SEPTEMBER 2013**

[www.itu.int/go/ITU-R/seminars](http://www.itu.int/go/ITU-R/seminars)



Organised by:



# Notification of frequency assignments for recording in the Master Register and Terrestrial Plans

# Overview of the Presentation

- Why notify frequency assignments to the Radiocommunication Bureau (BR)?
- Which frequency assignments are to be notified?
- What and when to notify?
- How to notify?
  - Identify the notice type
  - Electronic notice file format
  - How to submit to the BR
- Actions taken by the Bureau
- Final Remarks

# Why notify to the BR?

- ITU members are bound to apply the provisions of Radio Regulations
- International rights and obligations of administrations in respect to frequency assignments shall be derived from the recording of those in the Master International Frequency Register (Master Register) or from their conformity, where appropriate, with a plan (RR 8.1)
- Frequency assignments recorded in the Master Register with a favourable finding have the right to international recognition (RR 8.3)



# Which frequency assignments are to be notified?

- Any frequency assignment relating to a transmitting station and to its associated receiving stations, if it is:
  - Capable of causing harmful interference to any service of another administration (RR 11.3)
  - Used for international radiocommunication (RR 11.4)
  - Subject to a world or regional frequency allotment or assignment plan which does not have its own notification procedure (RR. 11.5)
  - Subject to the Art. 9 coordination procedure (RR 11.6)
  - Requesting international recognition (RR 11.7)
  - Notified for information only (RR 11.8)
    - When operating, the latter shall not cause harmful interference to, and shall not claim protection from harmful interference caused by a station operating in accordance with CS, CC and RR (RR 8.4)

# Which frequency assignments are NOT to be notified?

- These frequency assignments shall not be notified:
  - Assignments to stations in the amateur service (RR 11.14)
  - Assignments to ship and other mobile stations (RR 11.14)
  - Assignments involving specific frequencies which are prescribed by the Radio Regulations for common use by terrestrial stations of a given service (RR 11.13)
    - Common frequencies are entered in the Master Register by BR (fragment “Com Freq” and ITU administration code “XBR”)
    - Consolidated table of common frequencies is published in the Preface to the BR International Frequency Information Circular (BR IFIC) (Chapter VI)

# What to notify?



- For the recording of an assignment in MR
  - Administration shall provide the relevant characteristics listed in Appendix 4 to the RR (RR 11.15)

Column No.	Item identifier	Notice related to Description of data items and requirements
8		<b>POWER CHARACTERISTICS</b>
8.1	8	the symbol (X, Y or Z, as appropriate) describing the type of power (see Article 1) corresponding to the class of emission
8.2	8A	the power delivered to the antenna transmission line, in kW
8.3	8AA	the power delivered to the antenna, in dBW In the case of a transmitting station, required for an assignment: – in the bands below 28 MHz, in all services except the radionavigation service; or – in the bands above 28 MHz shared with space services; or – in the bands above 28 MHz not shared with space services: – in the aeronautical mobile service, meteorological aids service; or – in all other services, if the radiated power is not supplied In the case of a receiving land station, required if the associated transmitting station's radiated power is not supplied In the case of a typical transmitting station, required if the radiated power is not supplied

Broadcasting (sound and television) stations in the VHF/UHF bands up to 960 MHz, for the application of No. 11.2 and No. 9.21	Broadcasting (sound) stations in the LF/MF bands, for the application of No. 11.2	Transmitting stations (except broadcasting stations in the planned LF/MF bands, in the HF bands governed by Article 12, and in the VHF/UHF bands up to 960 MHz), for the application of No. 11.2 and No. 9.21	Receiving land stations, for the application of No. 11.9 and No. 9.21	Typical transmitting stations, for the application of No. 11.17	Maritime mobile frequency allotment, for the application of plan modification under Appendix 25 (Nos. 25/1.1, 25/1.1.2, 25/1.25)	Broadcasting stations in the HF bands, for the application of No. 12.16	Item identifier
X	X	X	X	X	X	X	8
	X					X	8A
		+	+	+	X		8AA

# What to notify? (cont.)

- For the modification of a given Plan
  - Administration shall provide the relevant characteristics listed in the Annexes of the corresponding Agreement



# When to notify for MR?

- Notices relating to assignments to stations of terrestrial services shall reach the BR not earlier than 3 months before the assignments are brought into use (RR. 11.24)
- Notices for stations involved in coordination with a satellite network shall reach the BR not earlier than 3 years before they are brought into use (RR. 11.25)
- Notices relating to assignments for high altitude platform stations (HAPS) in the FX shall reach the BR not earlier than 5 years before they are brought into use (RR. 11.26)



# When to notify for MR? (cont.)

- Notices relating to assignments that fall within planned frequency bands (governed by World or Regional Agreements):
  - Notify to the MR only if there is a corresponding plan entry
  - In case there is no corresponding plan entry:
    1. Submit a Plan modification notice to the BR
    2. Wait for the Plan to be successfully modified
    3. Notify the assignment to the BR (RR 11)

# How to notify to the BR?

- A notice for each frequency and for each station
- If the same frequency is re-used with the same technical characteristics many times within a given area, optionally:
  - A single notice giving the typical characteristics of one station of the network (RR11.17)
  - Option is not available for all services or for all frequency bands (RR11.18 – 11.21B):
    - Stations covered by Allotment Plans in Ap. 25, 26 and 27
    - Broadcasting stations
    - Terrestrial stations within the coordination area of an earth station, etc.

# Identification of the Notice Type

- Broadcasting service
  - Frequency band
    - Sound broadcasting in Low frequency (155 – 285 kHz) and Medium frequency (525 – 1705 kHz) – LFMF
    - Sound and television broadcasting in VHF and UHF bands - FMTV
  - Region
  - Applicable provisions of RR or Regional Agreements : Fragment
  - Class of station (BC or BT)
  - Action requested by the notice
- Fixed, mobile and other services (FXM)
  - Fragment
  - Type (Tx or Rx) and class of station

# LFMF: Identification of the Notice Type

Fragment	Region	ACTION				
		ADD MODIFY	ADMINID	CONFORM	PARTB	SUPPRESS WITHDRAW
GE75	R1, R3	T03	TB6		TB8	TB9
RJ81	R2	T04	TB6		TB8	TB9
Art11	R1, R3	T03	TB6	TB7		TB9
Art11	R2	T04	TB6	TB7		TB9

# FMTV: Identification of the Notice Type

Fragment	Region	ACTION CS						
			ADD MODIFY	ADMINID	CONFORM	PARTB	COORD- INATION	SUPPRESS WITHDRAW
GE06A	GE06*	BT	G02	TB1		TB3		TB5
GE06D	GE06*	BC	GS1			TB3		TB5
GE06D	GE06*	BC	GS2			TB3		TB5
GE06D	GE06*	BT	GT1			TB3		TB5
GE06D	GE06*	BT	GT2			TB3		TB5
GE84	R1	BC	T01	TB1		TB3	TB4	TB5
GE89	ABA	BT	T02	TB1		TB3	TB4	TB5
ST61	EBA	BT	T02	TB1		TB3	TB4	TB5
ST61	EBA	BC	T01	TB1		TB3	TB4	TB5
Art11	GE06*	BC	GS1, GB1	TB1	TB2			TB5
Art11	GE06*	BT	GT1, GB1	TB1	TB2			TB5
Art11	XAA - GE06*	BC	T01	TB1	TB2			TB5
Art11	XAA - GE06*	BT	T02	TB1	TB2			TB5

\* the area and frequency bands governed by the GE06 Regional Agreement

# FXM: Identification of the Notice Type

Type/Class of station or Plan	FX (TX)	ALL TX except FX	ALL RX	Typical Stations	Allotment AP25	Allotment AP26	Allotment AP27	GE85 Plans	Adaptive Systems
Fragment									
Art11	T11	T12	T13	T14	T12	T12	T12	T12	T17
Art11*	G11	G12	G13	G14					
GE06L	G11	G12	G13	G14					
APP 25					T15				
GE85M Plan								T16	
GE85N Plan								T16	

\* in the area and frequency bands governed by the GE06 Regional Agreement

# Electronic notice(s) file : Format

```
<HEAD>
t_adm=HNG
</HEAD>
```

```
<NOTICE>
t_ <NOTICE>
t_ t_n <NOTICE>
t_ t_d t_notice_type=T12
t_ t_fr t_d_adm_ntc=2010-11-26
t_ t_fr t_fragment=NTFD_RR
t_ t_st t_freq_assgn=128.1500
t_ t_p t_station_id=AIR AMBULANCE
t_ t_a t_prov=RR11.2
t_ t_c t_adm_ref_id=SF22125
t_ t_s t_ctry=HNG
t_ t_d t_site_name=BUDAORS
t_ t_i t_d_inuse=2010-08-01
t_ t_n t_is_resub=False
t_ t_a t_nat_srv=OT
t_ t_o t_addr_code=A
t_ t_a t_op_agcy=006
t_ t_s t_action=ADD
t_ t_e t_stn_cls=FD
t_ t_b t_emi_cls=A3EJN
t_ t_l t_bdwidth_cde=6K00
t_ t_l t_long=+0185956
t_ t_o t_lat=+465959
t_ t_o t_op_hh_fr=00:00
t_ t_o t_op_hh_to=24:00
```

```
<ANTFNNA>
t_ <ANTFNNA>
t_ t_ <ANTENNA>
t_ t_ t_pwr_xyz=Z
t_ t_ t_pwr_ant=7
t_ t_ t_pwr_dbw=4.8
t_ t_ t_pwr_eiv=E
t_ t_ t_ant_dir=ND
t_ t_ <RX_STATION>
t_ t_ t_geo_type=CIRCLE
t_ t_ t_long=+0185956
t_ t_ t_lat=+465959
t_ t_ t_radius=300
t_ t_ </RX_STATION>
t_ t_ </ANTENNA>
t_ t_ </NOTICE>
```

```
<TAIL>
t_num_notices=3
</TAIL>
```

**Res. 906 (Rev. WRC-12) :**  
All submission of notices for terrestrial services to the BR shall be in electronic format only, as of January 2009

The electronic notice file is a sequential, record-oriented, which follows the general outline of an SGML (Standard Generalized Mark-up Language) file, with a tagging scheme.

# Electronic notice(s) file : Format (cont'd)

<http://www.itu.int/ITU-R/go/terrestrial-notice/en>

	Article 11 of the RR and Agreements (other than GE06)	GE06 Agreement
<b>Fixed and Mobile services</b>		
General guidelines	<a href="#">FXM-guide</a>	<a href="#">OS-guide (see Note 1)</a>
Description of data (see Note 2)	<a href="#">T11</a> <a href="#">T12</a> <a href="#">T13</a> <a href="#">T14</a>	
Sample electronic Files	<a href="#">T11</a> <a href="#">T12</a> <a href="#">T13</a> <a href="#">T14</a>	<a href="#">G11</a> <a href="#">G12</a> <a href="#">G13</a> <a href="#">G14</a>
<b>Broadcasting service</b>		
Circular Letters	<a href="#">CR/120</a> <a href="#">CR/125</a>	<a href="#">CR/262</a>
General guidelines		<a href="#">BS-guide (see Note 1)</a>
Format of electronic notice		<a href="#">GS1</a> <a href="#">GS2</a> <a href="#">GT1</a> <a href="#">GT2</a> <a href="#">G02</a> <a href="#">GA1</a> <a href="#">GB1</a> <a href="#">TB2</a> <a href="#">TB3</a> <a href="#">TB5</a>
Description of data	<a href="#">T01</a> <a href="#">T02</a> <a href="#">T03</a> <a href="#">T04</a> <a href="#">T05</a> <a href="#">T06</a> <a href="#">T07</a> <a href="#">T08</a> <a href="#">T09</a> <a href="#">T10</a>	
Sample electronic Files	<a href="#">T01</a> <a href="#">T02</a> <a href="#">T03</a> <a href="#">T04</a> <a href="#">T05</a> <a href="#">T06</a> <a href="#">T07</a> <a href="#">T08</a> <a href="#">T09</a> <a href="#">T10</a>	<a href="#">GS1</a> <a href="#">GS2</a> <a href="#">GT1</a> <a href="#">GT2</a> <a href="#">GA1</a> <a href="#">GB1</a> <a href="#">TB2</a> <a href="#">TB3</a> <a href="#">TB5</a>
HFBC	<a href="#">ITU-R HFBC Planning Software</a>	

Note 1: The guidelines for GE06 submissions are also available in Arabic and Russian.  
 Note 2: This paper notices are used for illustration only. The submission of notices for terrestrial services to the Radiocommunication Bureau shall be in electronic format only.

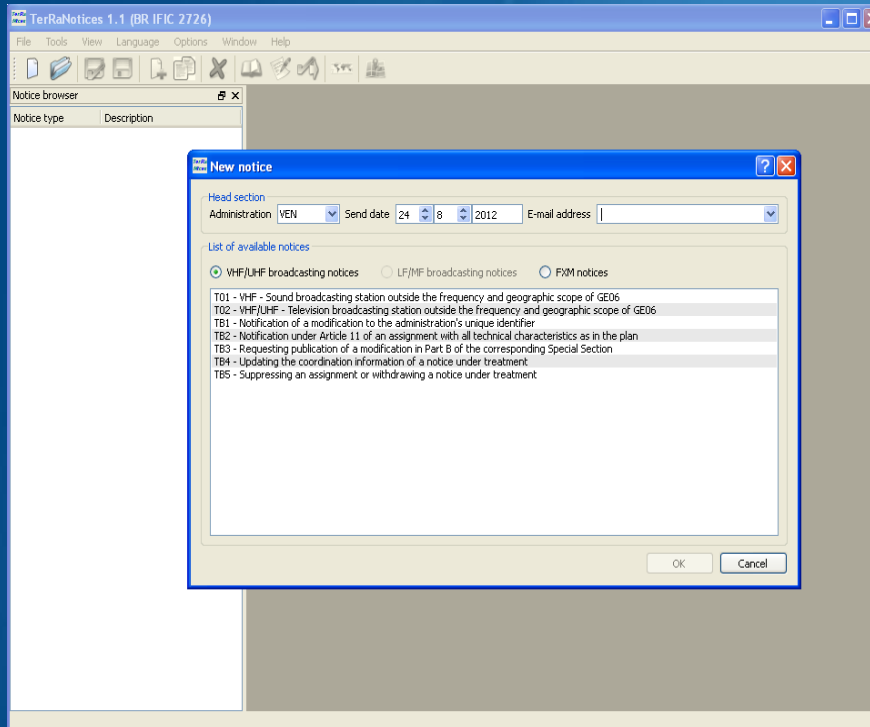
Top - Feedback - Contact us - Copyright © ITU 2010 All Rights Reserved  
 Contact for this page : ITU-R Web Coordinator  
 Updated : 2010-06-15

Additional information and descriptions as well as samples of different notice types can be found in the various guidelines on this web page

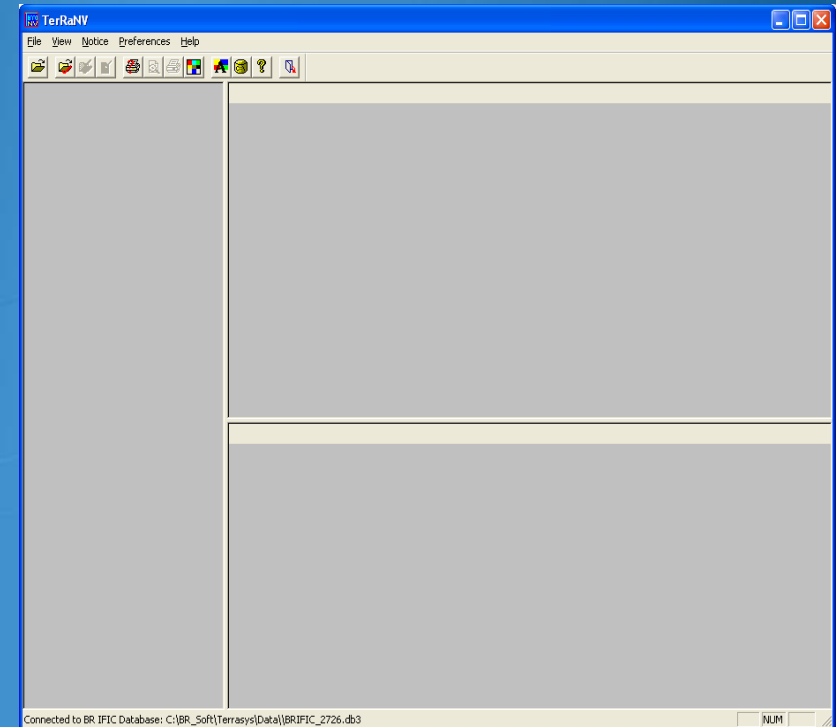


# Electronic notice(s) file : Creation and Validation

TerRaNotices



TerRaNV



Notice Validation



# How to submit notices to the BR?

- WISFAT (Web Interface for the Submission of Frequency Assignments/Allotments for the Terrestrial Services)
  - Immediate acknowledgement sent to the notifier
- Access to the WISFAT interface is restricted to registered notifiers selected by the Administration
- Official e-mail request ([brmail@itu.int](mailto:brmail@itu.int)) to the BR from the Administration
  - Name, position, service e-mail, TIES Username

<http://www.itu.int/ITU-R/go/wisfat/en>

# Actions taken by Bureau - MR

- Submissions received via WISFAT
- Notices containing preliminary validation errors are returned (TerRaNotices/TerRaNV)
- Notices that pass preliminary validation are then further validated and also against the MR
  - If errors are found, notices are returned or request is made for further clarification from the administration (RR 11.27)

# Actions taken by Bureau – MR (cont'd)

- Complete notices are published in Part 1 of the BR IFIC (RR 11.28)
- Examined with respect to conformity with the Table of Frequency Allocations and other provisions (RR 11.31 – 11.34)
- Frequency assignments receiving:
  - Favourable findings will be published in Part 2 and will enter the MR
  - Unfavourable findings will be published in Part 3 and the Administration will be informed of the reason

# Actions taken by Bureau – Plan (cont'd)

- Complete notices are examined to determine the potentially affected Administration(s)
- Published in Part A of the BR IFIC
- After the specific period for comments :
- If no objections have been sent to the BR from the other administrations and on the explicit request from the notifying administration
  - Published in Part B of the BR IFIC
- If submitted notice was a request for a suppression of a plan entry
  - Published in Part C

# Final Remarks

- Notification has two aspects
  - Administration's obligation
  - Claim to international rights
- One of the main purposes of the Master Register is to reflect the exact use of the radio spectrum in your territory, therefore it is very important to notify and maintain it current
- Very important to consult the BR IFIC

# Thank you for your attention!

Contact Person: Sujiva Pinnagoda  
Radiocommunication Bureau  
Terrestrial Services Department  
E-mail: [pinnagoda@itu.int](mailto:pinnagoda@itu.int)  
Telephone: +41 22 730 5605