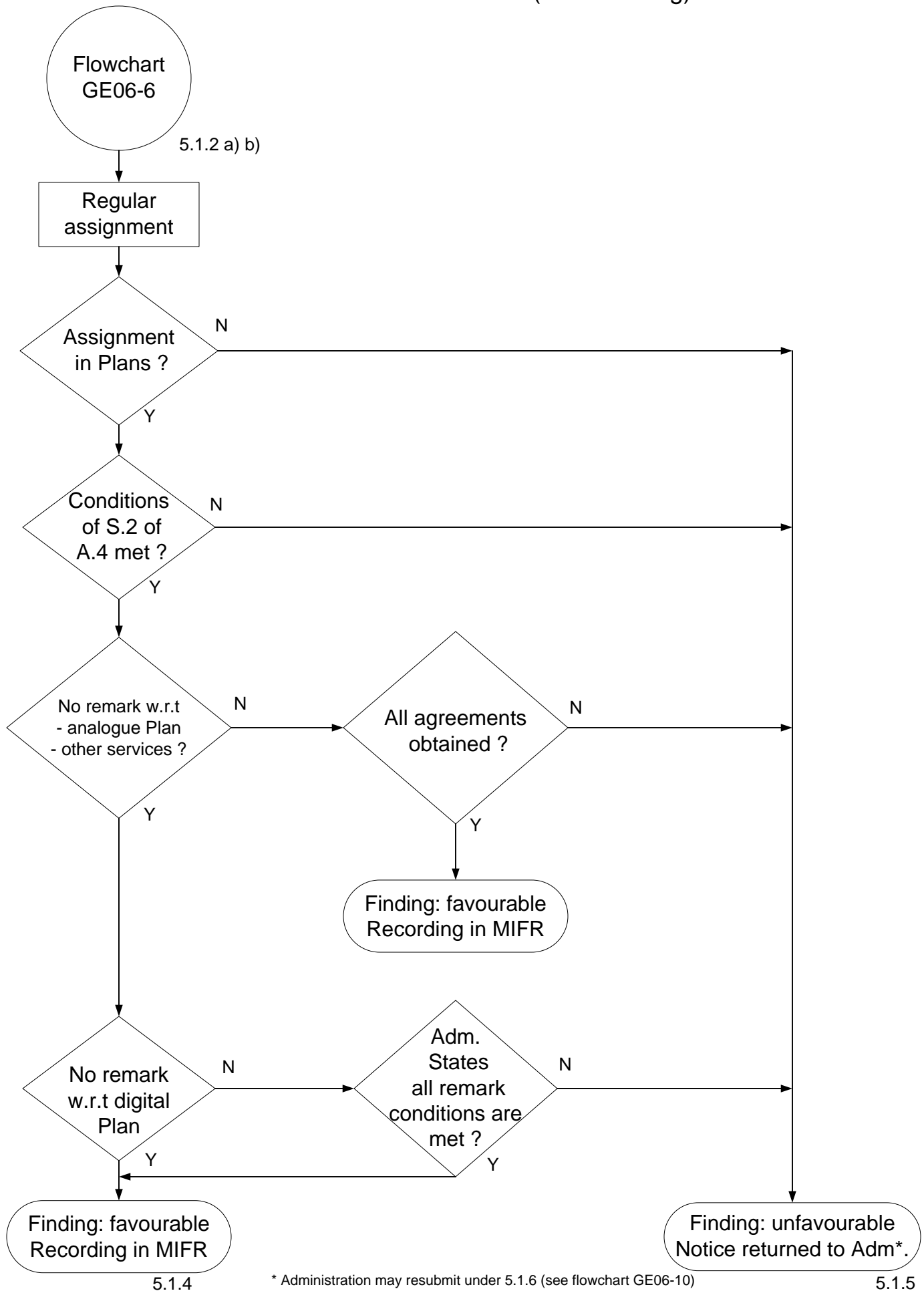
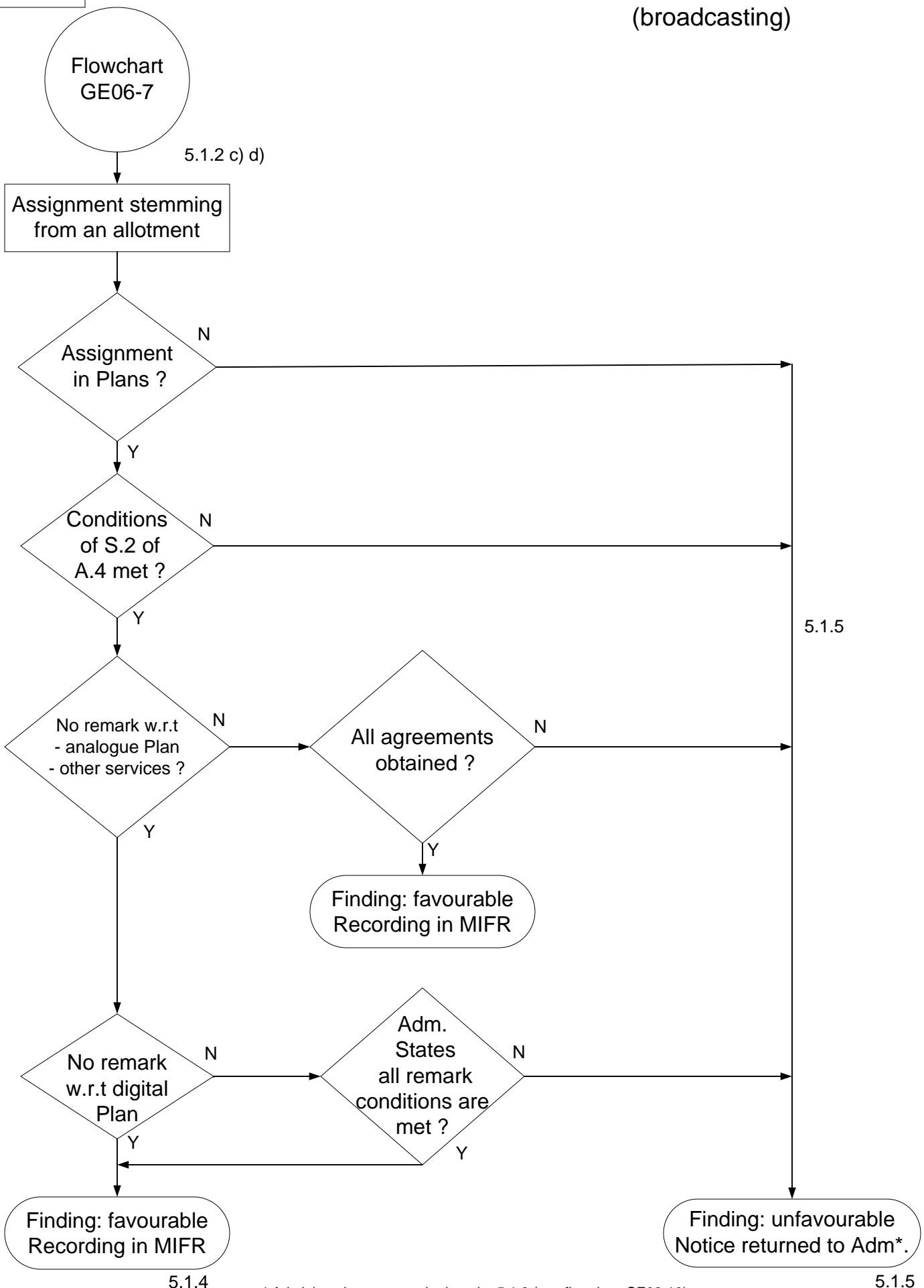


# Article 5 Procedures (broadcasting)

Flowchart  
GE06-6



\* Administration may resubmit under 5.1.6 (see flowchart GE06-10)



5.1.4

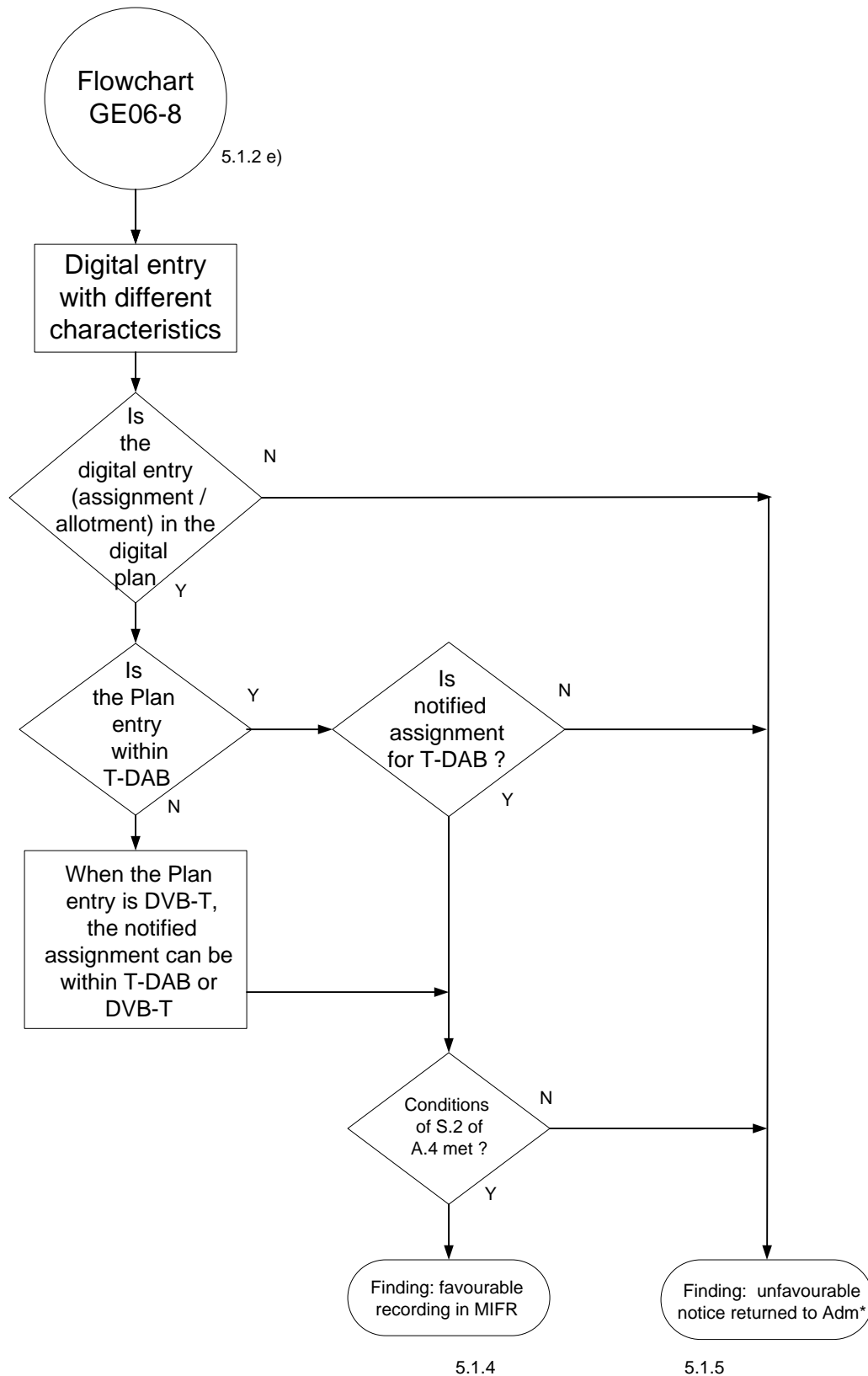
\* Administration may resubmit under 5.1.6 (see flowchart GE06-10)

5.1.5

# Article 5 Procedures (broadcasting)

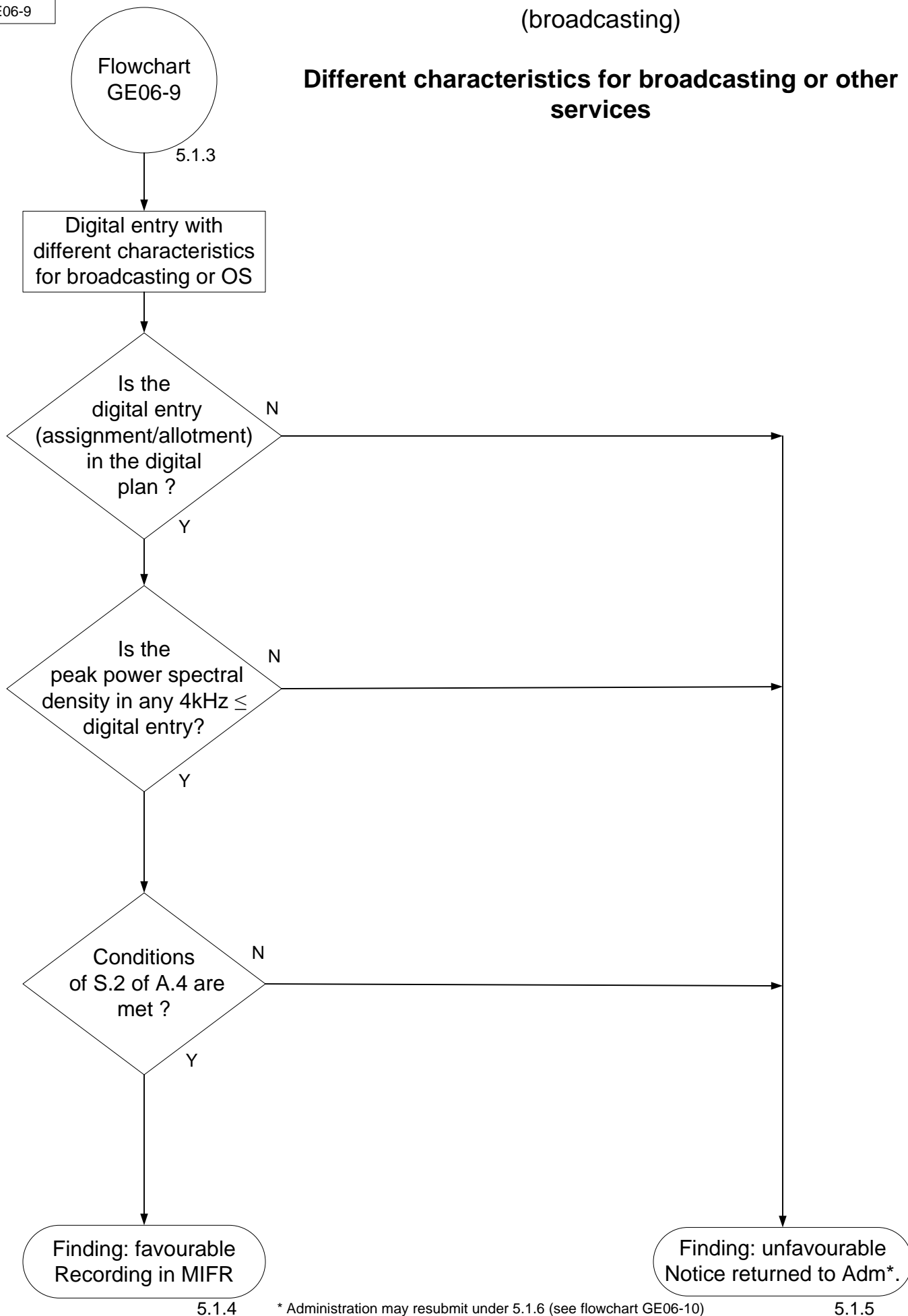
Flowchart  
GE06-8

## Different characteristics within DVB-T or T-DAB



\* Administration may resubmit under 5.1.6 (see flowchart GE06-10)

**Different characteristics for broadcasting or other services**



5.1.4

\* Administration may resubmit under 5.1.6 (see flowchart GE06-10)

5.1.5

**RESUBMISSION**

