
Tools to be used in the
context of the Plan
Modification Procedure
Article 4 GE06D



Committed to connecting the world

Tools to be used for GE06 Plan



eBCD 2.0
Broadcasting Online

eQry

ePub

eTools

myAdmin

TerRaQ

TerRaNotices

GE06Calc

WISFAT

BRIFIC - Navigation Menu

The image displays two overlapping windows from the BRIFIC 2733 software. The background window is the main interface, and the foreground window is a license agreement dialog.

BRIFIC 2733 - 27/11/2012

LICENSE AGREEMENT AND DISCLAIMER OF WARRANTY

1. The publications of the International Telecommunication Union (ITU) are protected by copyright law. The publication contained herein (Publication), or any part thereof, reproduced, by any means whatsoever, without the written authorization of ITU.
2. ITU hereby grants you a non-exclusive license to use the Publication, such use constituting an exception to the terms and conditions of the present license agreement.
3. The Publication may be placed on an internal website provided that access is limited to the number of Authorized Users and that payment of the applicable fee may not be placed on an external website.
4. This product is provided without warranty of any kind, in particular, ITU does not warrant or make any representation regarding the use, or the results of use, of the information contained herein, or of the correctness, reliability or otherwise of the information.

Accept License

BRIFIC 2733 - 27/11/2012

Welcome to the BR International Frequency Information Circular (BR IFIC).

BRIFIC
International Frequency Information Circular
(Terrestrial Services)
DVD

TEST VERSION

NEW FORMAT

Language

BRIFIC Contents

- Publication Notice
- Guides
- Contact us

Install BR IFIC

Quit

International Telecommunication Union

Terrestrial Services BR IFIC

Content of BR IFIC

The screenshot shows the BR IFIC 2748 website interface. The left sidebar contains several menu items, each circled in red. On the right, there are four large red arrows pointing left, each labeled with a category in red italicized text. The categories are: Data (pointing to 'Latest Publication'), Software (pointing to 'TerRaQ', 'TerRaNV', and 'TerRaNotices'), Documentation (pointing to 'Information Note' and 'Preface'), and Installation (pointing to 'Install BR IFIC').

BR IFIC 2748

Publication

- Latest Publication
- MIFR & Plans

Software

- TerRaQ
- TerRaNV
- TerRaNotices

Documentation

- Information Note
- Preface

Install BR IFIC

Back

Latest Publication

Data

The Official Publication portion of the BR IFIC (Terrestrial services) contains:

- [Part I, II, III & IIB and Special Sections](#)

Software

Documentation

Installation

International Telecommunication Union

Terrestrial Services BR IFIC

BR IFIC 2748

BR IFIC 2748 - 09/07/2013

Welcome to the BR International Frequency Information Circular (BR IFIC).



- BR IFIC Contents
- Publication Notice
- Guides
- Contact us

- English
- Español
- Français
- Русский
- 中文
- العربية

Install BR IFIC

Quit

Language

International Telecommunication Union



Terrestrial Services BR IFIC

Current BR IFIC Publication Content

These screens show the statistics of the notices in process published in each part and each fragment of the BR IFIC. The data is also grouped based on the notifying and concerned Administrations. Using these screens the users are able to

The left screenshot shows the 'Current BR IFIC Content Details' window. It displays the current BR IFIC Number (2743) and Publication Date (30/04/2013). Below this, it lists the RR 11 Publication No 2743 and provides counts for its parts: Part I (5966), Part II (1285), and Part III (151). It also shows counts for FM/TV (102), LF/MF (2), and FXM (5862). The 'FM/TV Special Sections' section includes a notice for GE06 Special Section No 80 with a deadline of 14/07/2013 and counts for Part A1 (383), Part B1 (660), Part A2 (18), and Part C1 (8). The 'LF/MF Special Sections' and 'FXM Special Sections' are both listed as 'None'. The 'Other Special Sections' are also listed as 'None'. The active database is C:/BR_SOFT/TERRASYS/Data/BRIFIC_2743.db3.

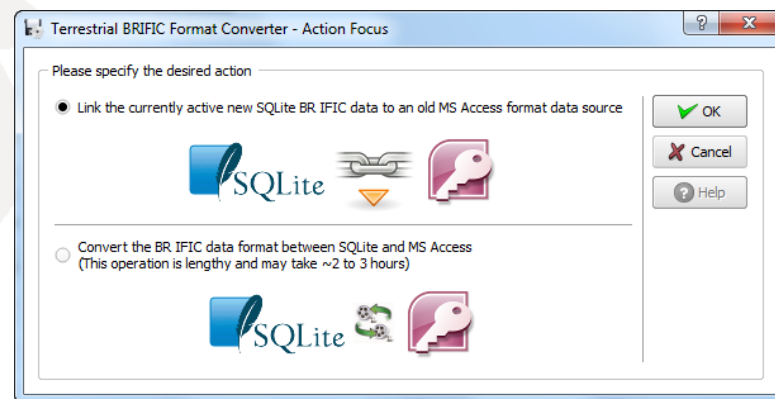
The right screenshot shows the 'Current BR IFIC Content Details' window with a summary table of statistics. The table is titled 'The following table shows a summary of the statistics relating to this publication, based on the Notifying Administration and domain:'. The table has four columns: Notifying Administration, Total, FM/TV, LF/MF, and FXM. The data is as follows:

Notifying Administration	Total	FM/TV	LF/MF	FXM
ARG	10	0	0	10
AZE	8	8	0	0
BEL	15	0	0	15
BUL	95	10	0	85
CAN	3	0	0	3
D	6	6	0	0
DNK	3	3	0	0
E	5	5	0	0
EST	31	31	0	0
F	4683	0	0	4683
FIN	6	6	0	0
G	29	29	0	0
HOL	80	80	0	0
I	565	565	0	0
IRN	283	0	0	283
J	6	0	0	6
KAZ	108	108	0	0
MDA	2	0	0	2
MLT	2	0	0	2
MRC	5	5	0	0
NGR	2	2	0	0
RUS	2451	288	0	2163
S	13	13	0	0
SUI	2	2	0	0
TKM	7	7	0	0
TUN	20	0	0	20
UKR	29	29	0	0
USA	2	0	2	0

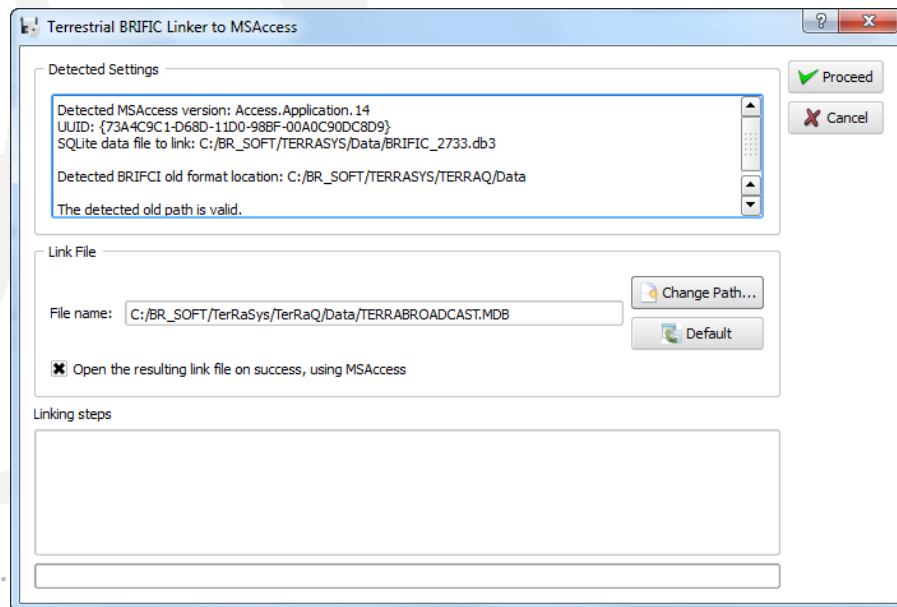
The active database is C:/BR_SOFT/TERRASYS/Data/BRIFIC_2743.db3.

Terrestrial BR IFIC Format Converter: TerRaQ "external Tools" menu item

In order to enable existing **GE06Calc** (MS Access) to access the data in the BR IFIC database (SQLite), a format converter is also provided.



This application is able to provide a quick Microsoft Access "**bridge**" to access the data stored in SQLite format.



See "[How to run GE06Calc with the new BRIFIC.docx](#)"

Access to the Portal

<http://www.itu.int/ITU-R/eBCD/eQry.aspx>

International Telecommunication Union

عربي | 中文 | Español | Français | Русский

Advanced Search

Home : ITU-R : [Terrestrial Services](#) : Broadcasting

Google Custom Search

ITU Services | Newsroom | Events | Publications | Statistics | About ITU

Broadcasting Services

- Our Bands
- MIFR
- Plans
- HFBC
- Forum
- FAQ
- On-line services/Software
- Reference documents

Broadcasting Services Division

Broadcasting Services Division (BCD) examines notices and submissions for frequency assignments concerning television and sound broadcasting terrestrial services in all broadcasting bands (LF, MF, HF, VHF and UHF) and provides assistance to administrations with respect to the technical, regulatory and administrative procedures applicable to the planning of terrestrial broadcasting services.

Its main activities include:

- Examining proposed modifications to the frequency Plans with respect to their impact on other administrations in accordance with the procedures specified in the Regional Agreements.
- Examining proposed notifications for recording in the Master International Frequency Register (MIFR) in accordance with the Radio Regulations and associated Regional Agreements.
- Examining the compatibility analysis for HF broadcasting requirements submitted for inclusion in the seasonal schedules in accordance with Article 12 of the radio Regulations.
- Providing assistance and training to administrations in the application of relevant provisions of the Radio Regulations and Regional Agreements.
- Developing technical software that assist administrations in the planning and coordinating of terrestrial broadcasting services.

Contact: brbcd@itu.int

In focus!

- Arab States Regional Group (ASMG) GE06 Frequency Coordination Meetings

Broadcasting Databases

- Broadcasting data only a few clicks away!
- 2011 plan modification calculations for planning purposes now available in eTools. Demo video: [.avi](#), [.webm](#), [.mp4](#), [.flv](#)

Coming events

eBCD : Overview

myAdmin

"My own office
@ ITU: opening ~24/7"



eTools

"My test calculations
on-demand"



ePub

"Special sections,
the publication day!"



eQry

"Fast search
on Plans and MIFR"



Overview



TIES users 



TIES users 
BCD authorization required

Tips:

- Check yourTIESaccount@itu.int for eBCD 2.0 e-communications
- You can set Email Forwarding to your work account from [here](#)

"Online search
on Plans and MIFR"

eQry

Read-Only copy of BR
Database (Updated daily)

GE06 ST61 GE75 MIFR
GE89 RJ81 (FMTV)
GE84
GE06L HIF



Search by:

Administration

Geographic Area

Frequency

Date of Receipt

Administration

BR Identification

Unique Identifier

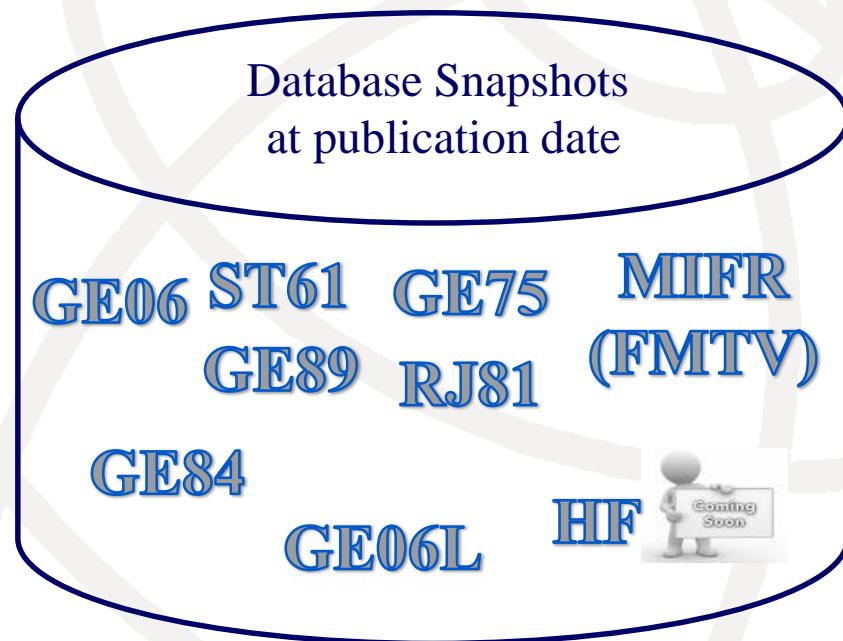
Number

Status

(Recorded/Published)

“Special Sections,
the publication day!”

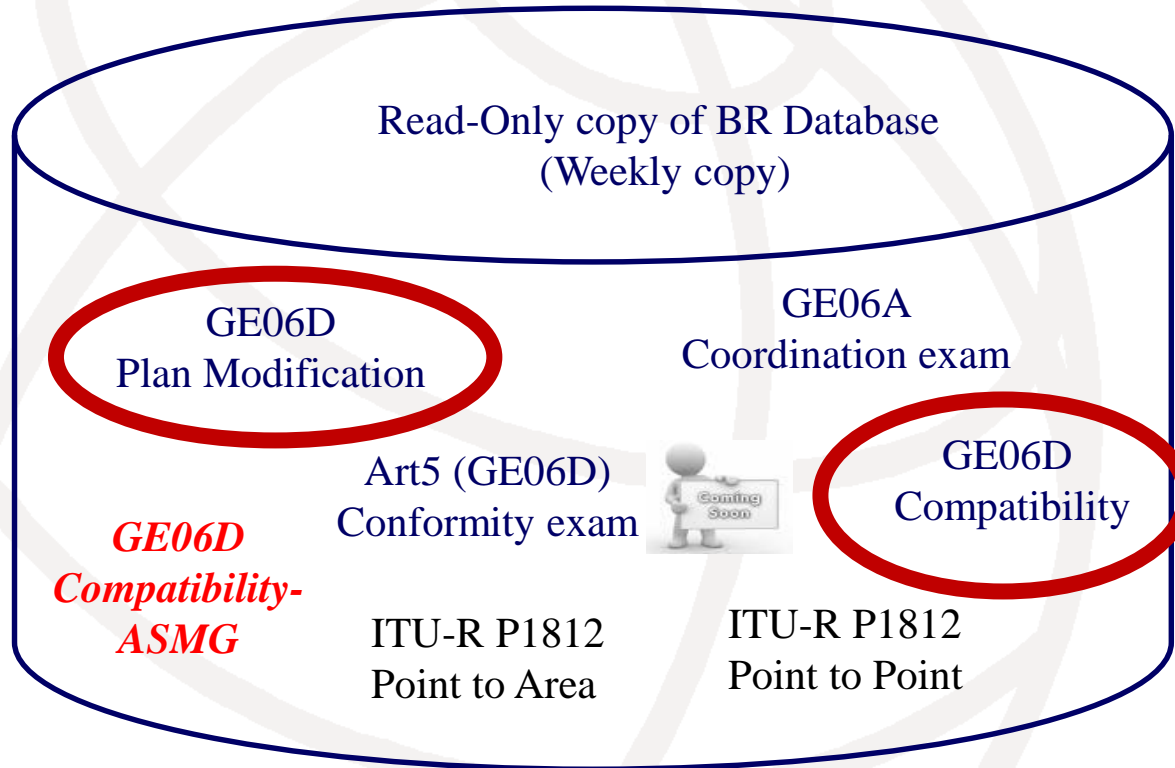
ePub



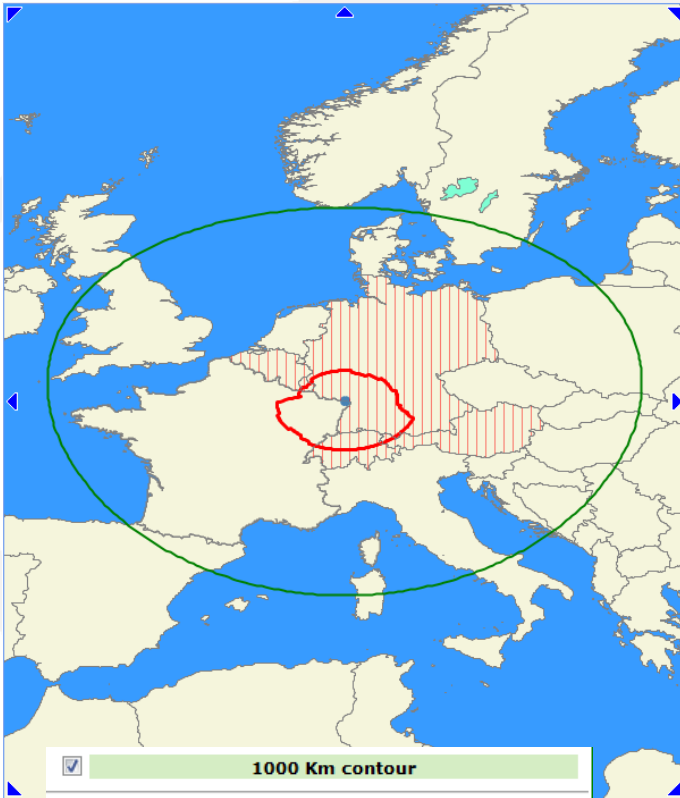
- Search by BR Ific
- Search by Administration
 - My notifications
 - Notifications which affects me

“On-demand test
calculations”

eTools



GE06D - Modification of the Plan



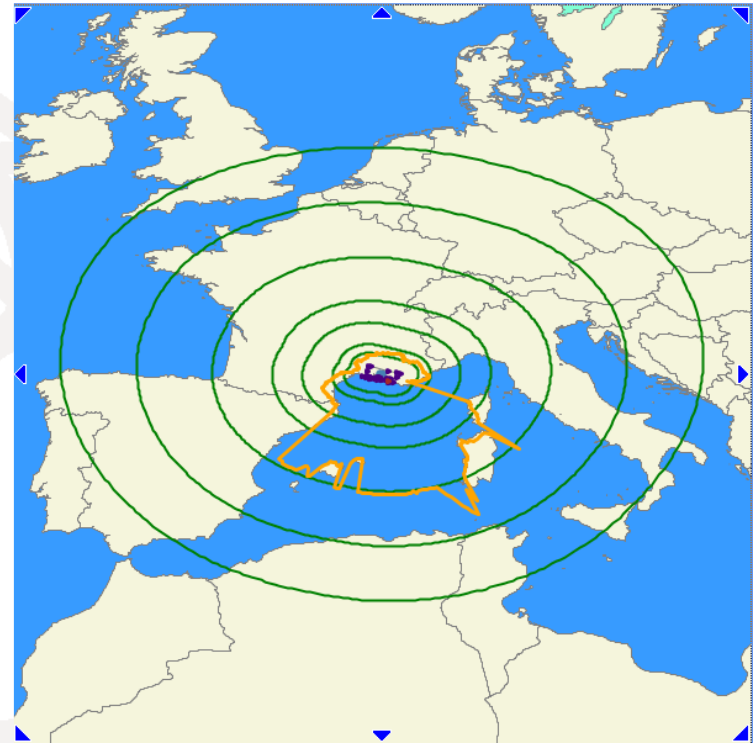
1000 Km contour

Administration within 1000 Km contour									
AND	AUT	BEL	BIH	CVA	CZE	D	DNK		
E	G	HNG	HOL	HRV	I	LIE	LUX		
MCO	NOR	POL	ROU	S	SMR	SRB	SUI		

Broadcasting Coordination Contour
 Trigger FS (dB(μV/m)): 23
 Rx Antenna Height (m) 10

Affected Administrations				
AUT	BEL	D	LIE	LUX
SUI				

C *ation*



Geometrical Contours

1000 km 750 km 500 km 300 km

200 km 100 km 60 km

BC cut-off field strength contour
 Trigger FS (dB(μV/m)): 25
 Rx Antenna Height (m) 10

eTools-GE06D Plan modification

eCalculations - Windows Internet Explorer

File Edit View Favorites Tools Help

http://www.itu.int/ITU-R/eBCD/MemberPages/eCalculations.aspx

iSearch

eCalculations

Job details

Adm	E-notice file	Number of Notices
UGA	UgandaG06_revised_2.txt	172

Agreements to be provided:
COD, SSD

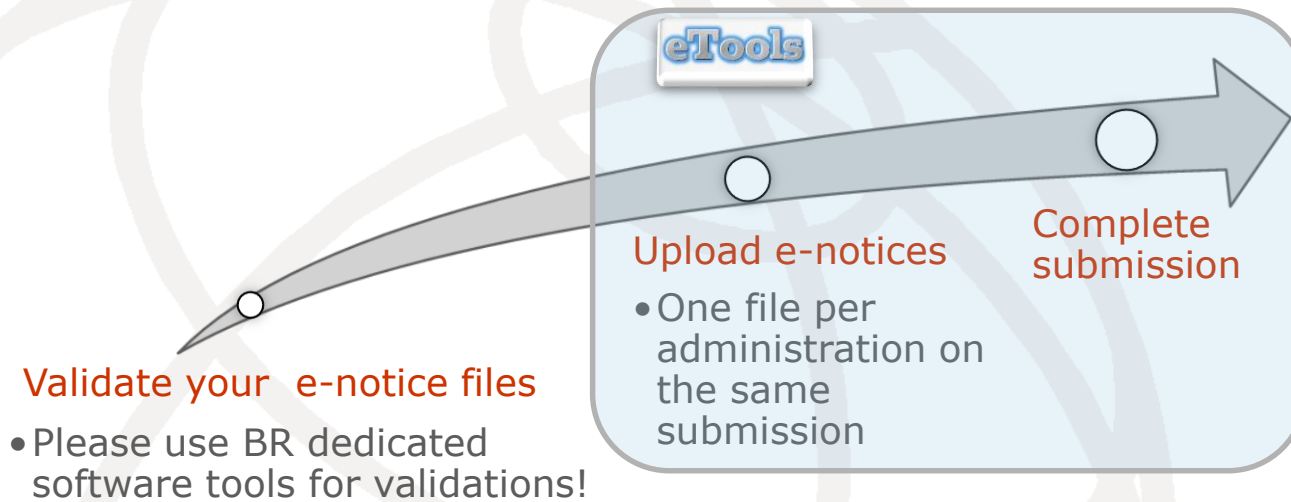
GE06D

[Export to Excel](#) [Google Earth](#)

Total number of records 172. Click on headers to sort

<u>Adm Id</u>	<u>BR Id</u>	<u>Adm</u>	<u>Intent</u>	<u>PE</u>	<u>Site/Allot Name</u>	<u>TV Channel/Freq Block</u>	<u>Coord Completed</u>	<u>Obiection By</u>	<u>Missina Coordination</u>
UGA0205TU01	170	UGA	MODIFY	1	ADJUMANI	24			COD SSD
UGA0205TU04	11	UGA	MODIFY	1	ADJUMANI	40			COD SSD
UGA0404TU02	105	UGA	MODIFY	1	APAC	32			COD
UGA0404TU04	106	UGA	MODIFY	1	APAC	28			COD
UGA0105TU01	14	UGA	MODIFY	1	ARUA	38			COD SSD
UGA0105TU03	36	UGA	MODIFY	1	ARUA	32			COD SSD
UGA0105TU04	26	UGA	MODIFY	1	ARUA	28			COD SSD
UGA0105TU05NEW	136	UGA	ADD	1	ARUA	34			COD SSD
UGA0907TU04	46	UGA	MODIFY	1	BOMBO	39			KEN TZA
UGA0906TU01	04	UGA	MODIFY	1	BUCIPI	25			KEN

eTools: e-notice submission



The ITU distributed processing infrastructure will treat your test submission and inform you at completion!



Check your TIES account!

yourTIESname@ties.itu.int

“On-demand test
calculations”

eTools

Read-Only copy of BR Database
(Weekly copy)

GE06D
Plan Modification

GE06D
Compatibility

GE06A
Coordination exam

GE06D
Compatibility-
ATU

Art5 (GE06D)
Conformity exam



***GE06D
Compatibility-
ASMG***

ITU-R P1812
Point to Area

ITU-R P1812
Point to Point

eTools: job processing



Job Id	Job Name	Job Status	Job Type	Date of Request	Date of Start Run	Date of Completion	Process	Elapsed Time (minutes)
11943	BHR_KWT_OMA_QAT_UAE	Success	Art4_Compatibility_ServerASMG	4/30/2014 10:11:25 AM	4/30/2014 10:25:41 AM	4/30/2014 10:30:12 AM	BR-GE06-2_4	19
12080	Full_iteration_1bis	Success	Art4_Compatibility_ServerASMG	5/7/2014 5:29:36 PM	5/8/2014 2:09:16 AM	5/8/2014 2:41:29 AM	BR-GE06-2_5	552
12079	Full_iteration_1	Failed	Art4_Compatibility_ServerASMG	5/7/2014 5:15:18 PM	5/7/2014 5:15:24 PM	5/7/2014 5:21:35 PM	BR-GE06-2_4	6

Test Packages 12080: click to show all

Job summary [Delete](#) [Share](#)

job id	job name	job status
12080	Full_iteration_1bis	Success

Job Input

Adm	E-notice file	Number of Notices
ALG	ALG.txt	170
ARS	ARS.txt	290
BHR	BHR.txt	104
EGY	EGY.txt	512

Compatibility Analyses

Interference calculations between new notices (from electronic notification files) and existing plan notices and recorded assignments/allotments

Test Packages 12080: click to show all

Job summary [Delete](#) [Share](#)

job id	job name	job status
12080	Full_iteration_1bis	Success

Job Input

Adm	E-notice file	Number of Notices
ALG	ALG.txt	170
ARS	ARS.txt	290
BHR	BHR.txt	104
EGY	EGY.txt	512

Job Output

[Download results](#)

Do you want to open or save **results_degert_12080_hdawlxv91unvdp.mdb.zip** (154 MB) from **br-ge06-2.itu.int?**

Open

Save

Save

Save as

Save and open

Results is an MS Access mdb file for download to be visualized with GE06Calc to be unzipped.

eTools: privacy & job sharing

Jobs (e-notice and results) are owned and visible **ONLY** by submitter...



...you can now share them with other eBCD registered users!



*"My own office
@ ITU: opening ~24/7"*

myAdmin

My Mail Box

Communication between the BR and the Member State:

Ex: Plan notices not yet published (for specific cases)

→GE06D notices under Conformity Review (30 days)

*"My own office
@ ITU: opening ~24/7"*

myAdmin

My Plan Statistics

Plan notices and assignments submitted by my Administration

Plan notices in coordination which affect my Administration

My MIFR Statistics

MIFR assignments and notices (part 1, 2, 2B, 3) submitted by my Administration

.....
"My own office
@ ITU: opening ~24/7"

myAdmin

My Profile: services subscription

Send me an E-mail when new Special Sections containing my notifications or notifications affecting me are available on the web

>1000 subscribers

Send me an E-mail when Coordination/Objection for my notices enters the database

>700 subscribers

GE06 Calc

- PC-based application for unofficial examinations to the GE06 Digital Plan
- Web-based installation from:
ITU-R->Terrestrial->Broadcasting->Software->GE06Calc

<http://www.itu.int/ITU-R/terrestrial/broadcast/software/ge06calc/>

GE06 Calc - Installation

- Automatic updates (checking for updates is performed only if and when the application is started)
- **Required:** BRIFIC (Terrestrial) DVD applications and database

Important

- GE06 Calc is intended to be an easy-to-use tool for administrations to unofficially examine the conformity of notices with respect to the GE06 Plan before sending them to the BR.
- To be able to benefit from GE06 Calc features, please **first install the BRIFIC** (Terrestrial) DVD applications and database on your PC. Examinations will be performed taking into account the GE06 Plan and MIFR data on the BRIFIC DVD.
- Please make sure that the notice files to be examined for conformity or compatibility analysis have been **validated** by software tools such as the TerRaNV, before opening such files in GE06 Calc.

GE06 Calc - Features

- *run conformity examination in case of conversion of an allotment into assignments.*
- *read the results file created through the use of the 'compatibility analysis tool' of the Web application eBCD. (coordination information/agreement taken into account)*

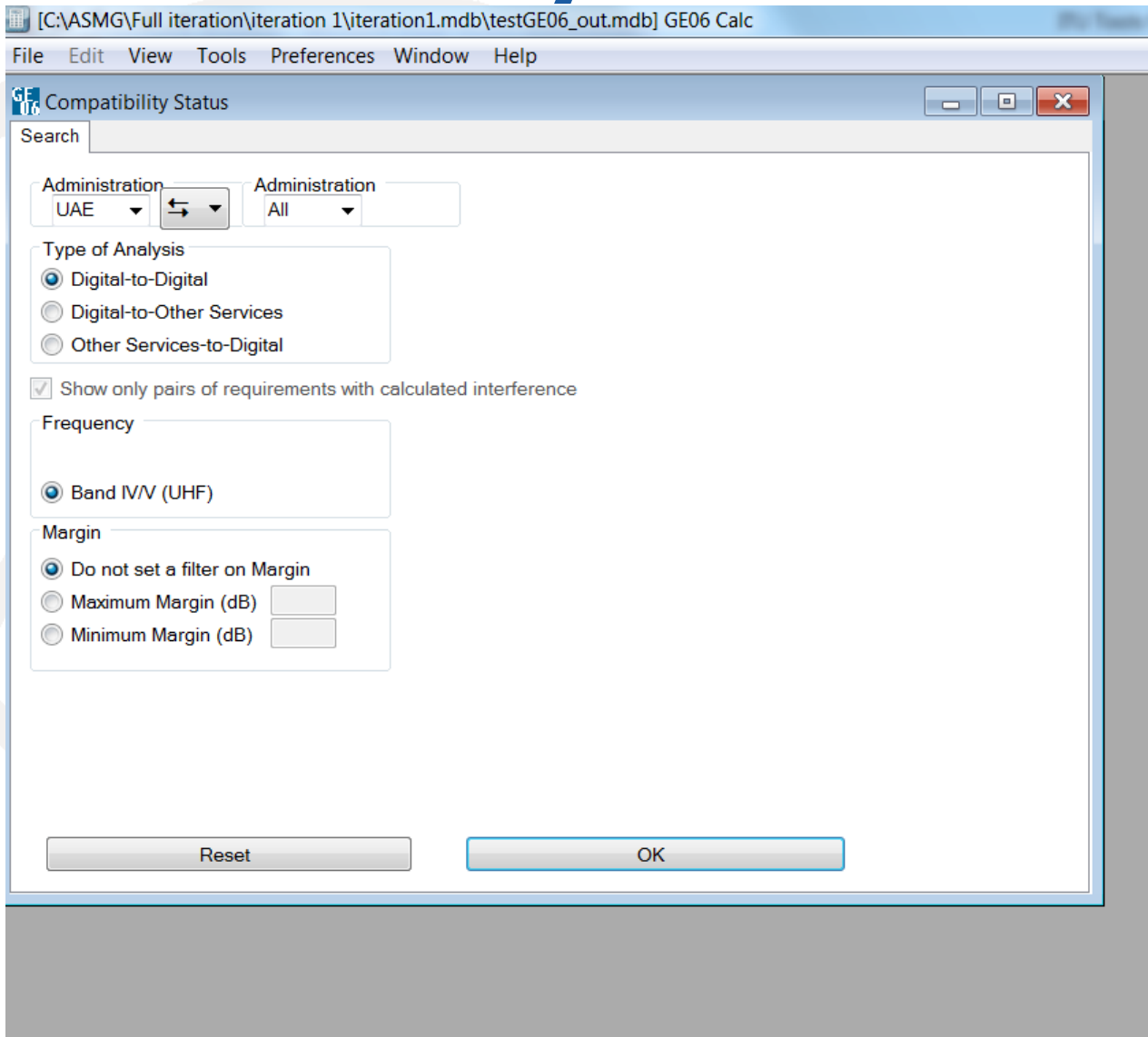
GE06 Calc – Usage for conformity examination

1. Open notice file and review the identified groups of notices
2. Select option for conformity examination (quick or complete)
3. Run conformity examination and analyse the findings

GE06 Calc – Usage to read the compatibility analysis

1. Open compatibility analysis file (saved from eTools)
2. Select option to read the results
3. Analyse the results, reduce incompatibilities and coordinate.

Reading a compatibility analysis file



Compatibility results

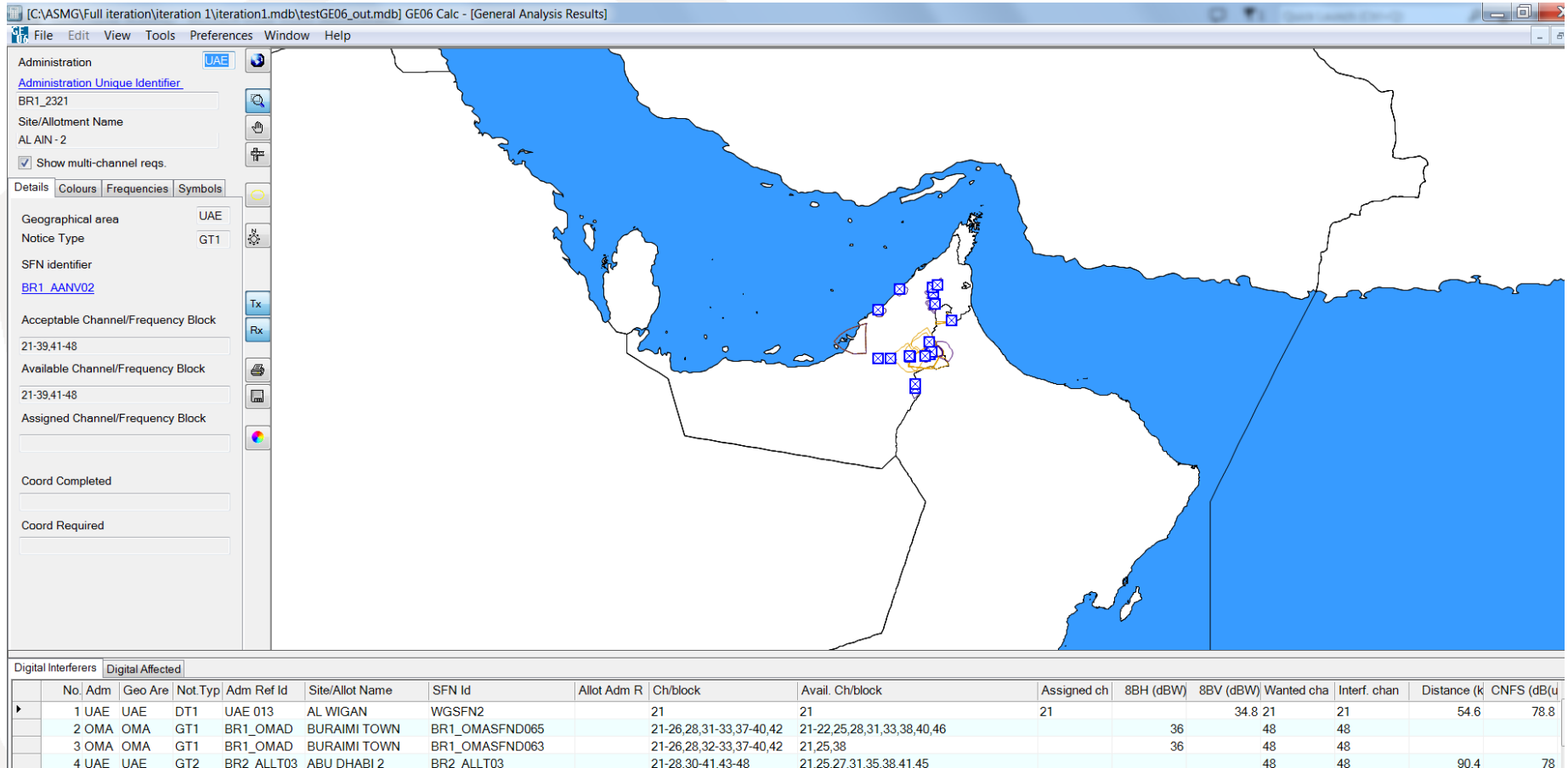
[C:\ASMG\Full iteration\iteration 1\iteration1.mdb\testGE06_out.mdb] GE06 Calc

File Edit View Tools Preferences Window Help

Selected Compatibility Status

	Id	Aff A	Aff G	Aff Not.	Aff AdmRefId	Aff Site/Allot Name	Aff SFN Id	Aff Allot Ad	Aff Ac Ch/bl	Aff Ch/block	Int A	Int G	Int Not.	Int AdmRefId	Int Site/A
▶	1	UAE	UAE	DT1	APR0016	AL KHAN	AJMV001		21	21	UAE	UAE	GT1	BR1_SHJ026	SHARJA
	2	UAE	UAE	DT1	APR0020	AJMAN	AJMV001		21	21	UAE	UAE	GT1	BR1_UAE 08	UMM AL
	3	UAE	UAE	DT1	APR0020	AJMAN	AJMV001		21	21	UAE	UAE	GT1	BR1_SHJ026	SHARJA
	4	UAE	UAE	DT1	APR0020	AJMAN	AJMV001		21	21	UAE	UAE	GT1	BR3_UAE 08	UMM AL
	5	UAE	UAE	DT1	APR0013	UMM AL QUWAIN	AJMV001		21	21	UAE	UAE	GT1	BR3_UAE 08	UMM AL
	6	UAE	UAE	GT1	BR1_UAE 08	UMM ALQUWAIN			21-44,46-48	21	UAE	UAE	DT1	APR0013	UMM AL
	7	UAE	UAE	GT1	BR3_UAE 08	UMM ALQUWAIN			21-44,46-48	21	UAE	UAE	DT1	APR0013	UMM AL
	8	UAE	UAE	GT1	BR2_UAE 08	UMM ALQUWAIN			21-44,46-48	21	UAE	UAE	DT1	APR0013	UMM AL
	9	UAE	UAE	DT1	APR0013	UMM AL QUWAIN	AJMV001		21	21	UAE	UAE	GT1	BR2_UAE 08	UMM AL
	10	UAE	UAE	DT1	APR0020	AJMAN	AJMV001		21	21	UAE	UAE	GT1	BR2_UAE 08	UMM AL
	11	UAE	UAE	DT1	APR0013	UMM AL QUWAIN	AJMV001		21	21	UAE	UAE	GT1	BR1_UAE 08	UMM AL
	12	UAE	UAE	GT1	BR1_APR00	AL SIDRA	BR1_ADSF		21-28,30,32	21	UAE	UAE	DT1	2191	AL HASA
	13	UAE	UAE	GT1	BR1_SHJ026	SHARJAH STUDIO	BR1_SHJ0		21-26,28-34	21	UAE	UAE	DT1	APR0016	AL KHAN
	14	UAE	UAE	GT1	BR1_SHJ027	SHARJAH JABAL B	BR1_SHJ0		21-26,28-34	21	UAE	UAE	DT1	2193	LIHBAB
	15	UAE	UAE	DT1	2191	AL HASA	AJMV001		21	21	UAE	UAE	GT1	BR1_APR00	AL SIDR
	16	UAE	UAE	DT1	UAE 019	DIBBA			22	22	UAE	UAE	GT1	BR1_SHJ012	SHARJA
	17	UAE	UAE	GT1	BR1_SHJ028	SHARJAH DIBBA	BR1_SHJV		22-39,41-45	22	UAE	UAE	DT1	UAE 019	DIBBA
	18	UAE	UAE	DT1	UAE 019	DIBBA			22	22	UAE	UAE	GT1	BR1_SHJ028	SHARJA
	19	UAE	UAE	GT1	BR1_SHJ027	SHARJAH JABAL B	BR1_SHJ0		21-26,28-34	24	UAE	UAE	DT1	2143	LIHBAB
	20	UAE	UAE	GT1	BR1_APR00	AL SIDRA	BR1_ADSF		21-28,30,32	24	UAE	UAE	DT1	2141	AL HASA
	21	UAE	UAE	DT1	UAE 014	AL SILAA	DALMA01		27	27	UAE	UAE	GT1	BR1_UAE 02	BAYYA
	22	UAE	UAE	DT1	APR0014	UMM AL QUWAIN	SJHV27		27	27	UAE	UAE	GT1	BR2_UAE 08	UMM AL
	23	UAE	UAE	DT1	APR0014	UMM AL QUWAIN	SJHV27		27	27	UAE	UAE	GT1	BR1_UAE 08	UMM AL
	24	UAE	UAE	GT2	BR1_ALLT01	ALAIN02	BR1_ALLT		21-48	27	OMA	OMA	DT1	OMADVBA9	BURAIM
	25	UAE	UAE	DT1	APR0014	UMM AL QUWAIN	SJHV27		27	27	UAE	UAE	GT1	BR3_UAE 08	UMM AL

Detailed analysis



-
- 
- If any question, please contact BRBCD@itu.int