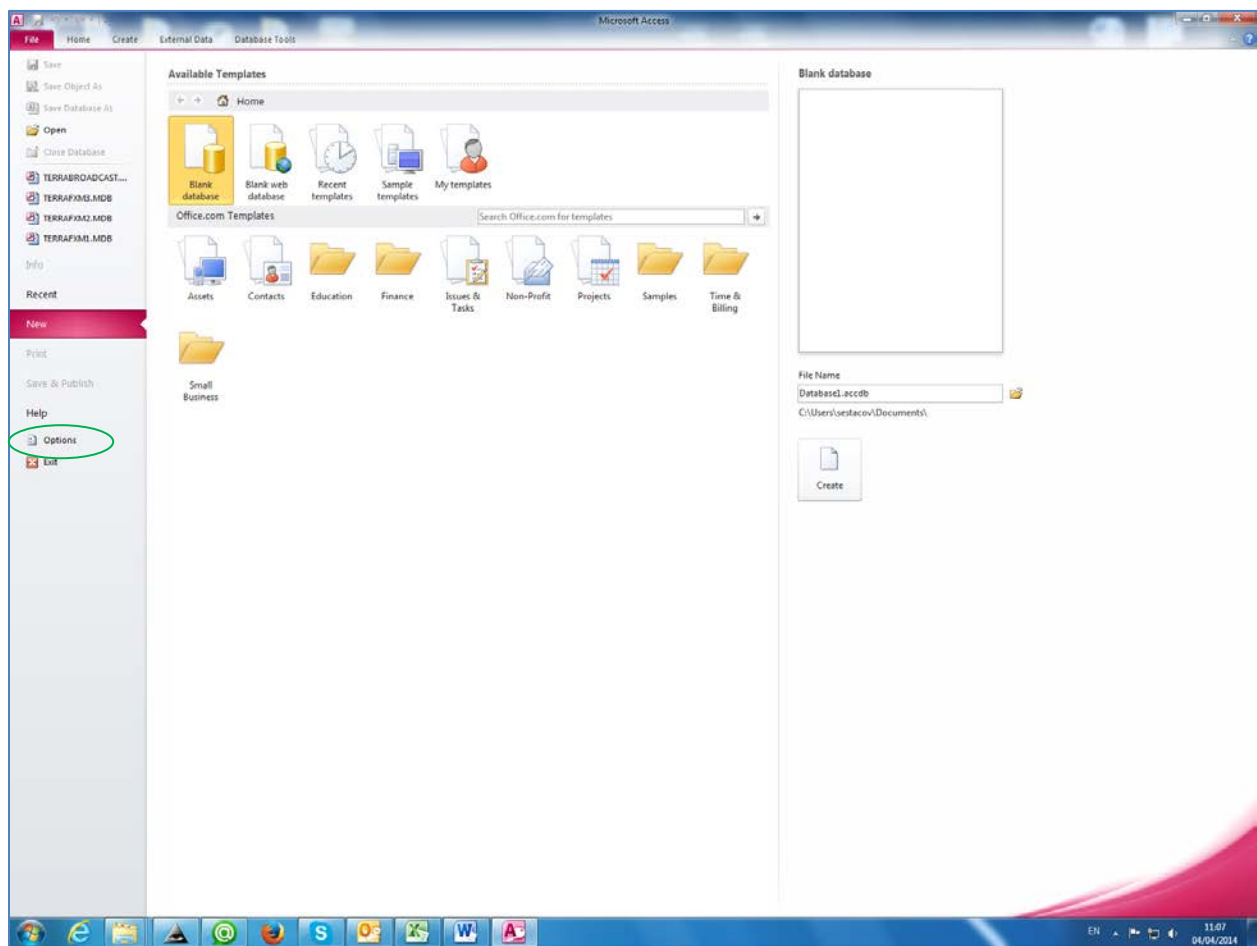


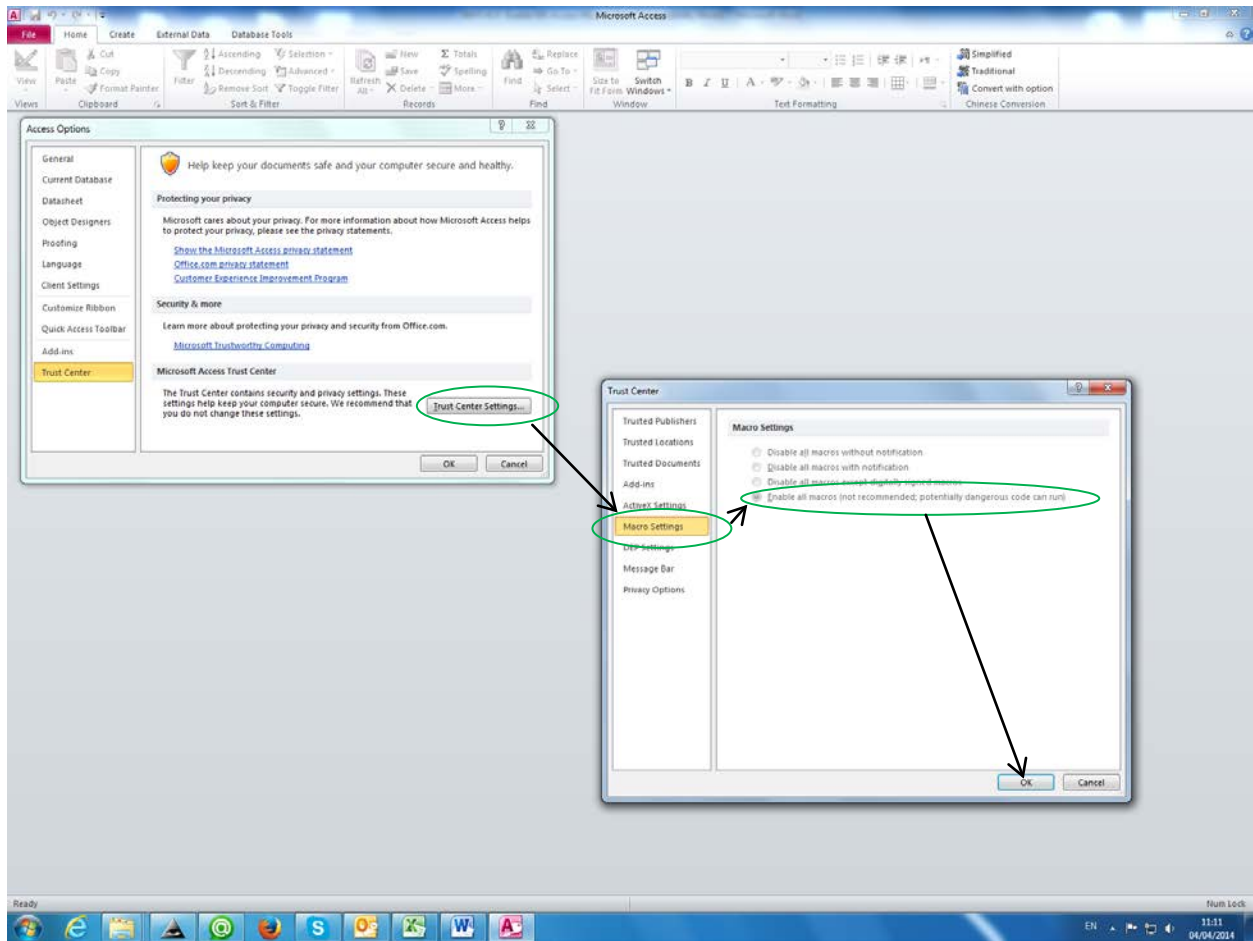
## Enable MS Access Macros

The step-by-step procedure for enabling MS Access macros is shown for MS Access 2010. For the other MS Access versions the screens may differ but the procedure is the same.

**Step 1 – Launch MS Access.** Click on “Options”:



**Step 2** – Click on “Trust Center”, then on “Trust Center Settings”, “Macro settings”, select “Enable all macros” and click OK:



**Step 3** – Exit MS Access.

Please note that there is no need to repeat the procedure described above every time when a new BRIFIC is being installed.