



Commenting on AP30* Special Sections

Presented by: Álvaro de Vega
(BR/SSD/SNP)

International Telecommunication Union

WORLD
RADIOCOMMUNICATION
SEMINAR 2014

GENEVA, 8-12 DECEMBER 2014

www.itu.int/go/ITU-R/WRS-14

Organised by:

150 1865 2015

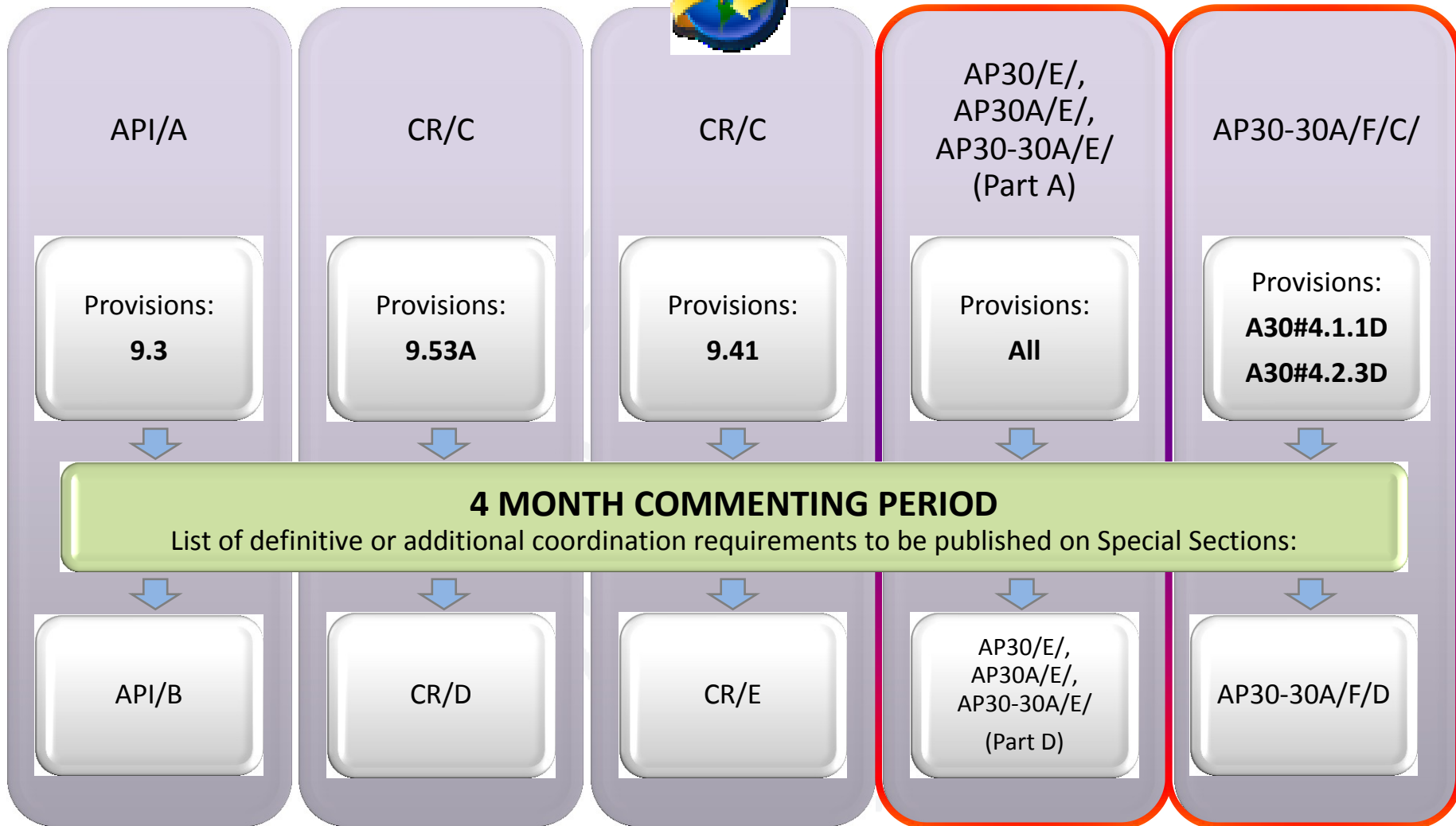
ITU

ITU

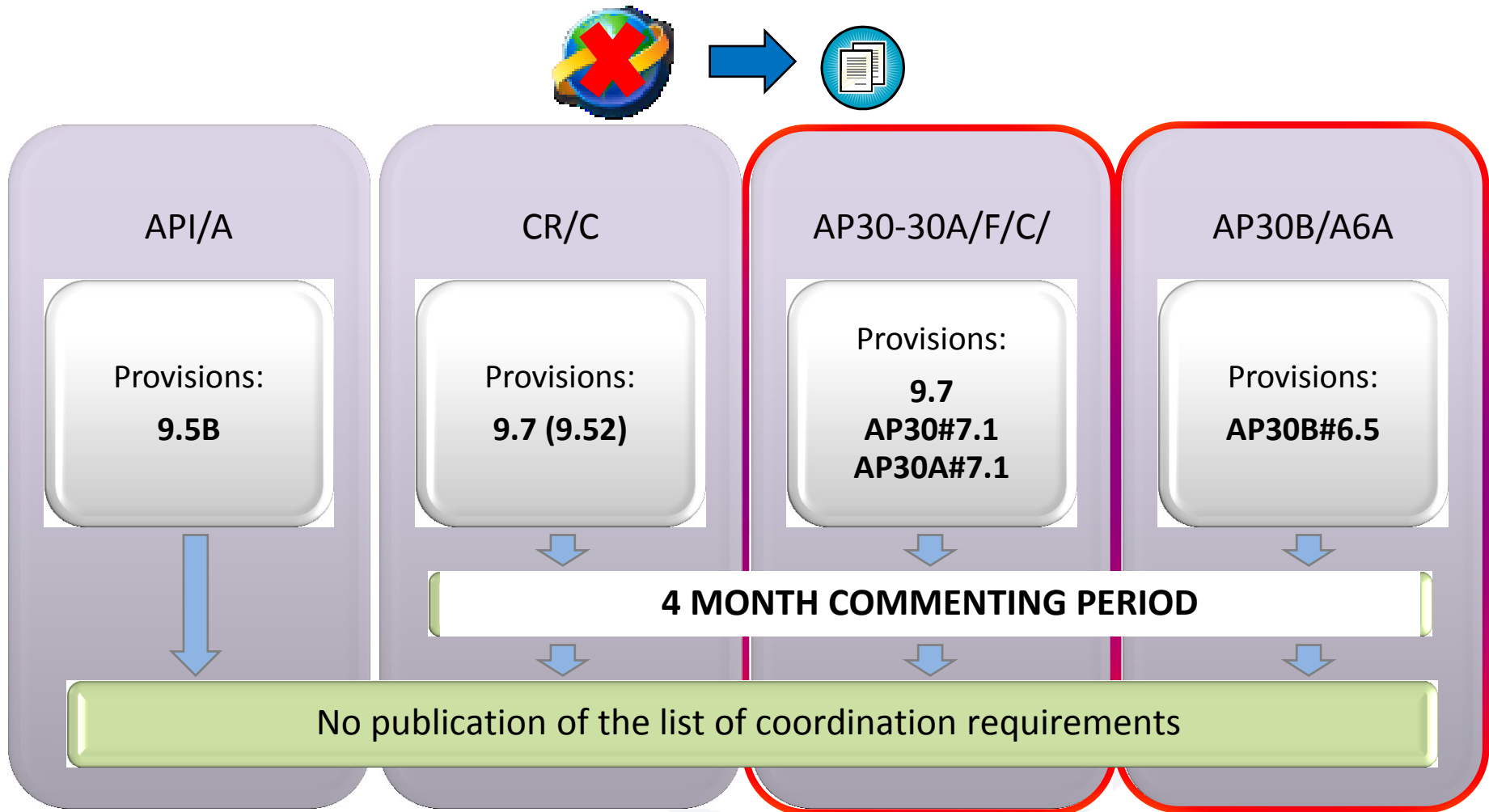
ITU

The poster features a photograph of a fountain in Geneva, Switzerland, with a large ITU logo overlaid. The text is in white and red on a blue and red background. The bottom section is red and contains the event details, a QR code, and logos for the 150th anniversary of ITU (1865-2015) and the organizing bodies.

Publications subject to comments with SpaceCom



Publications subject to comments without SpaceCom

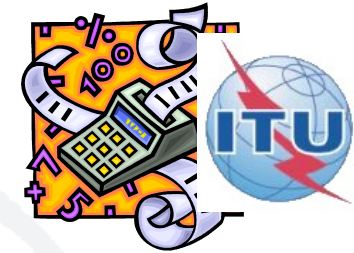


Commenting on Special Sections



BR Examination

on proposed satellite network
identifies affected Administrations



Publication

of results in BR IFIC Special Sections



**Affected Administrations have
4 months to comment**



i.e to inform BR and Notifying Administration of their agreement
for interfering OR their request for coordination/objection

Commenting on Special Sections

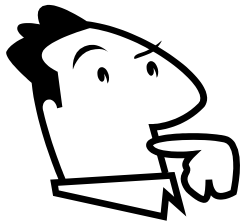


Publications subject to comments:

Publications NOT subject to comments:

- BSS Plan
 - AP30/E/ (Part A)
 - AP30A/E/ (Part A)
 - AP30-30A/E/ (Part A)
- SOF
 - AP30-30A/F/C/
- FSS Plan
 - AP30B/A6A/

- AP30/E/, AP30A/E/, AP30-30A/E/ (Part D, B, C)
- AP30-30A/F/D/
- AP30B/A6B/
- AP30B/A7/
- RES49/
- Part S-I, II, III



BSS Plan: Commenting on AP30*/E Part A Special Sections



BSS PLAN

Special Sections:



AP30/E/ (Part A) ; AP30A/E/ (Part A); AP30-30A/E/ (Part A)

All provisions identifying potentially affected Administrations

Region 1&3: A30#4.1.1A/B/C/D/E A30A#4.1.1A4/A7/B4/B7/C/D A30A#4.1.1D(Art.2A)

Region 2: A30#4.2.3A/B/C/D/E6/E7/F A30A#4.2.2A/B/C

To comment within 4 months, the Administrations identified above use:



SpaceCom software
To express disagreement
(agreement by default)



Results in Special Sections:

AP30/E/ (Part D) ; AP30A/E/ (Part D); AP30-30A/E/ (Part D)



SOF: Commenting on AP30-30A/F/C Special Sections



SOF in planned bands
Special Section:
AP30-30A/F/C/



BR examination
under:
AP30#4.1.1D
AP30#4.2.3D

BR examination
under:
RR 9.7
AP30#7.1
AP30A#7.1

To comment within 4 months, the Administrations identified above use:



SpaceCom software
to express disagreement
(agreement by default)

Telefax to BR / notifying Adm
To express comment
(disagreement by default)



Results in Special Section:
AP30-30A/F/D/



NO
Publication!



NO
SpaceCom!

FSS Plan: Commenting on AP30B/A6A/ Special Sections



FSS PLAN Special Section: AP30B/A6A/



BR examination under:
AP30B#6.5
Coordination requirements

BR examination under:
AP30B#6.6
Territory in the Service Area

To comment within 4 months, Administrations identified above use:



Telefax to BR / notifying Adm
To express comment
(No reply = Disagreement)



NO
SpaceCom!

Notifying Adm shall
seek agreement



NO Commenting
time period!



6.13- Notifying Adm requests BR assistance
6.14- BR telefax to affected Adm requesting a decision

To send decision within 1 month, Administrations asked above use:



Telefax to BR
To express : agreement or disagreement
(No reply = Agreement)



Telefax to BR / notifying Adm
To express Agreement or
Disagreement



If no reply - 6.15 BR Conclusion telefax



NO
Publication!

Commenting with SpaceCom BR Software



1. SpaceCom – Plan

2. Searching the BR IFIC



3. Using SpaceQry



4. Examining the SPS or 30B databases



5. Using SNS-OnLine



Commenting procedure



1. SpaceCom – Plan

2. Searching the BR IFIC



3. Using SpaceQry



4. Examining the SPS or 30B databases

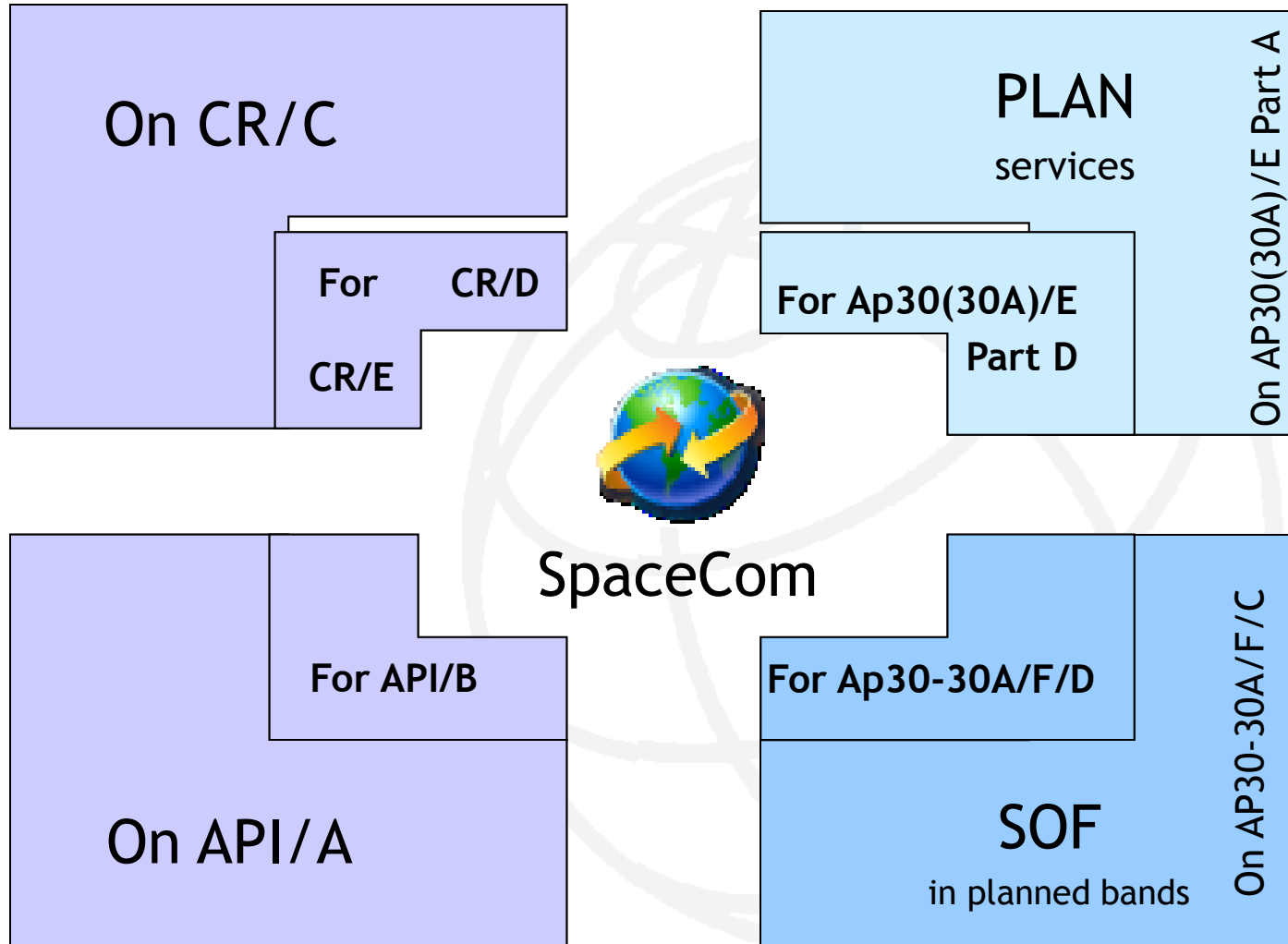


5. Using SNS-OnLine



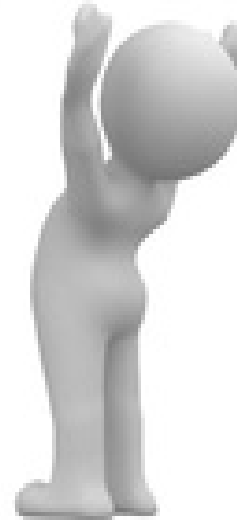


1. SpaceCom - Plan





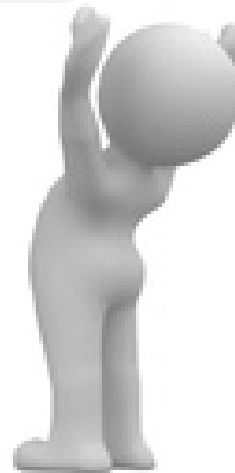
**Publication of BR IFIC
with AP30*/E (Part A)
or AP30-30A/F/C/
Special Section**





Capture comments
4 months time-period

Publication of BR IFIC
with AP30*/E (Part A)
or AP30-30A/F/C/
Special Section



Potentially Affected Administration

ITU-R



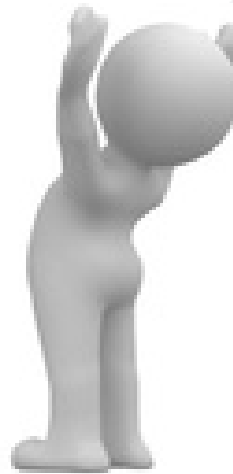
Notifying Administration



**Complete, validate,
Send comments file**



**Only SpaceCom files
are receivable by BR**





Analyses comments
Creates SpaceCom draft mdb
AP30*/E Part D
or AP30-30A/F/D



Potentially Affected Administration

ITU-R



Notifying Administration



View SpaceCom Draft Part D mdb

BR IFIC with posted SpaceCom Draft mdb

Validate Draft Part D (30 days time-period)

Send Draft Part D file



Draft mdb



Draft mdb



Potentially Affected
Administration

ITU-R



Notifying
Administration



Publication of BR IFIC
with
AP30*/E Part D
or
AP30-30A/F/D



To comment: how to identify administrations affected by a proposed satellite network?



1. SpaceCom – Plan

2. Searching the BR IFIC



3. Using SpaceQry



4. Examining the SPS or 30B databases 

5. Using SNS-OnLine



2. Searching the BR IFIC (1/3)

The main steps are:

a. Insert  in the user's computer

b. Click on BR IFIC Publications

c. Click on Special Sections / AP30*

d. Open each AP30/E, AP30A/E, AP30-30A/E (Part A), AP30-30A/F/C or AP30B/A6A **Special Section (PDF format)** 

e. Use the Adobe Acrobat “Find” tool to search for the 3 digits abbreviation of the subject administration

f. Note the name of the **affecting network** and the **provision number**

2. Searching the BR IFIC (2/3)

b.

BR IFIC SPACE International Frequency Information Circular (Space Services) 10.07.2012 ITU

BR IFIC Publications

- Databases
- As received (Res.55)
- Preface
- Cost Recovery
- BR Software
- BR Circular Letters

Special Sections

- ALL --
- AP30-30A/E
- AP30/E
- AP30A/E
- AP30B/A6A**
- AP30B/A6B
- API/A

Parts I-S, II-S, III-S

- ALL --
- PART I-S
- PART II-S
- PART III-S

Administrations

- ALL --
- S

BR IFIC PUBLICATIONS – TABLE OF CONTENTS

Print: AP30B/A6A
Print Table of Contents

SPECIAL SECTION / PART	PLAN PART	RESPONSIBLE ADMINISTRATION		NAME OF THE SPACE STATION	ORB. POS.	NAME OF THE ASSOCIATED EARTH STATION	IDENTIFICATION NUMBER
		ADM.	INTERG. ORG.				
AP30B/A6A/220	S			SIRIUS-30B-5E-5	5		112559007

Search Exit عربي English 中文 Español Français Русский

d.

2. Searching the BR IFIC (3/3)

AP 30B-A6a0220.pdf - Adobe Reader

Fichier Edition Affichage Fenêtre Aide

1 / 100 58.2%

Outils Commentaire

SUI

UNION INTERNATIONALE DES TÉLÉCOMMUNICATIONS BUREAU DES RADIOCOMMUNICATIONS		INTERNATIONAL TELECOMMUNICATION UNION RADIOCOMMUNICATION BUREAU		UNIÓN INTERNACIONAL DE TELECOMUNICACIONES OFICINA DE RADIOCOMUNICACIONES		© I.T.U.
RÉSEAU À SATELLITE SATELLITE NETWORK RED DE SATELITE		SIRIUS-30B-5E-5		SECTION SPÉCIALE N° SPECIAL SECTION No. SECCIÓN ESPECIAL N.º		AP30B/A6A/220
ADM. RESPONSABLE RESPONSABLE ADM. ADM. RESPONSABLE	S	LONGITUDE NOMINALE NOMINAL LONGITUDE LONGITUD NOMINAL	5 E	BR IFIC / DATE BR IFIC / DATE BR IFIC/ FECHA	2723 / 10.07.2012	
NOTIFIÉ AU NOM DE NOTIFIED ON BEHALF OF NOTIFICADA EN NOMBRE DE				NUMÉRO D'IDENTIFICATION IDENTIFICATION NUMBER NÚMERO DE IDENTIFICACIÓN	112559007	
RENSEIGNEMENTS REÇUS PAR LE BUREAU LE / INFORMATION RECEIVED BY THE BUREAU ON / INFORMACIÓN RECIBIDA POR LA OFICINA EL					23.01.2012	

e.

AP 30B-A6a0220.pdf - Adobe Reader

Fichier Edition Affichage Fenêtre Aide

93 / 100 78.4%

Outils Commentaire

SUI

Administrations et/ou réseaux à satellite affectés / Affected administrations and/or satellite networks / Administraciones y/o redes de satélite afectadas
 受影响的主管部门和/或卫星网络 / Затронутые администрации и/или спутниковые сети / أو الشبكات الساتلية المتأثرة بالإدارات و

A5 Coordinations	A1f Notifying adm.	A1f3 Inter. sat. org.	BR80 Status of identified network	A1a Sat. Network / A1b Plan beam identification	BR6a Id. no.	A4a1 Orbital long.	BR79 Max. degradation
App.30B, Art.6, § 6.5 - Annexe 4 App.30B, Art.6, § 6.5 - Annexe 4 Ap.30B, Art.6, § 6.5 - Anexo 4 附录30B, 第6条, 第6.5段-附件4 Пр. 30B, Ст. 6, п. 6.5 – Дополнение 4 الجدول 30B، المادة 6، الفقرة 5.6 للملحق 4							
§2.1 (6/4 GHz)	ALB		Allotment	ALB00000	90558006	4.13 E	15.705
	CMR		Allotment	CMR00000	90558053	7.98 E	8.014
	CTI	RAS	List	RASCOM-1P	103559025	2.9 E	7.842
			List	RASCOM-2P	102559002	2.9 E	4.842
	CYP		Allotment	CYP00000	90558062	0.5 E	2.450
	MDR		Allotment	MDR00000	90558154	0.8 E	4.370
	SUI		Allotment	SUI00000	90558192	9.45 E	4.393
	TUN		Allotment	TUN00000	90558202	5.74 E	15.220
	TUR		Allotment	TUR00000	90558203	8.5 E	6.332
§2.1 (12/10-11 GHz)	ATL		Allotment	ATL000000	90558206	4.13 E	15.018

f.

To comment: how to identify administrations affected by a proposed satellite network?



1. SpaceCom – Plan

2. Searching the BR IFIC



3. Using SpaceQry



4. Examining the SPS or 30B databases 

5. Using SNS-OnLine

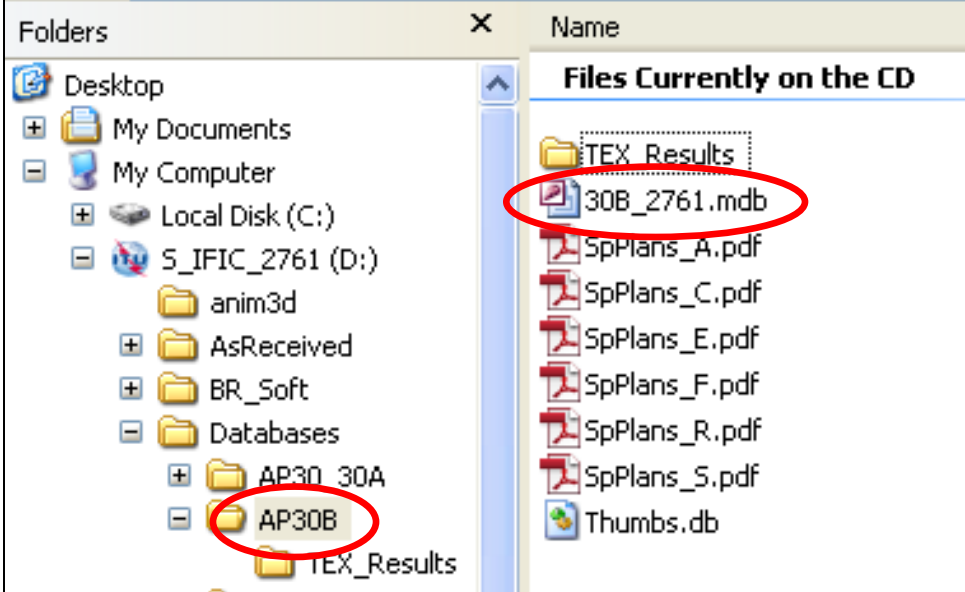
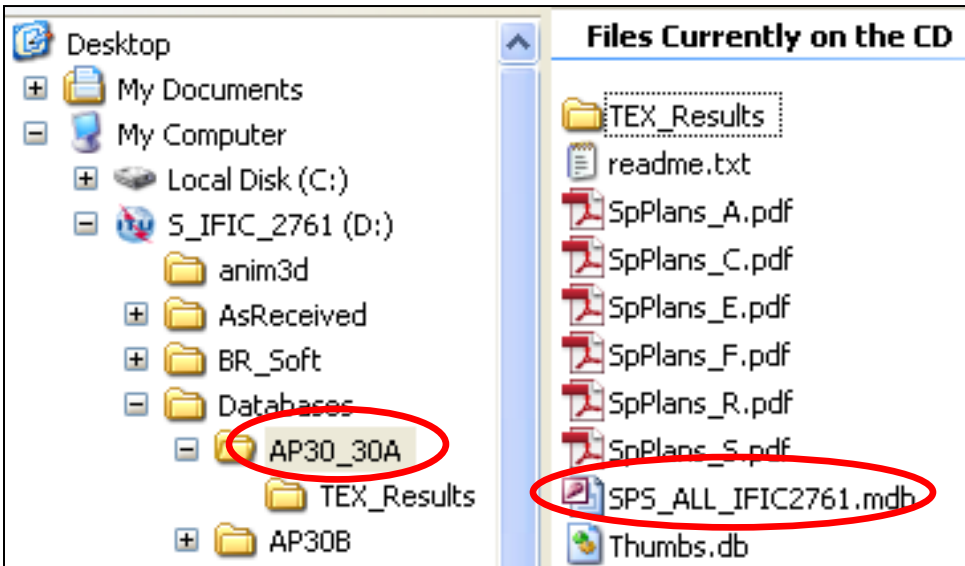


3. Using SpaceQry(1/5)

The main steps are:

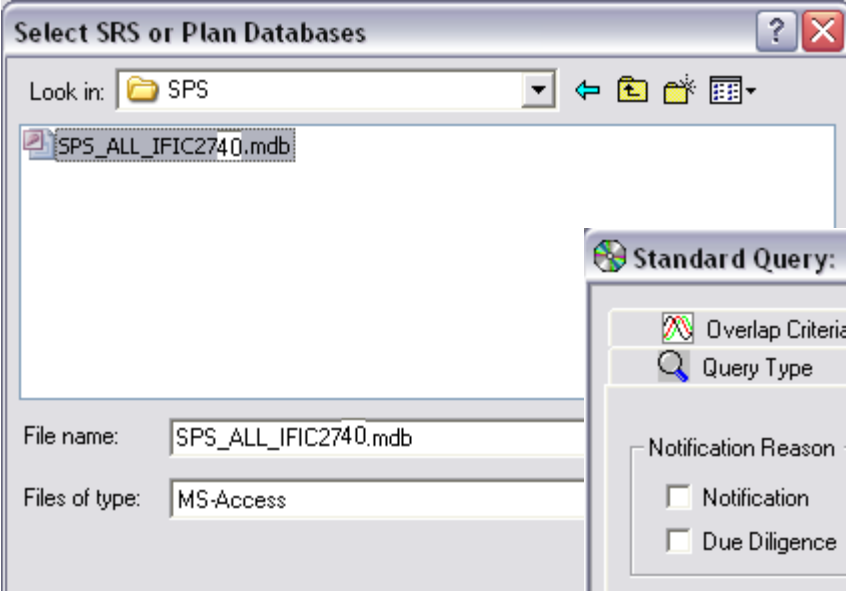
- a. Copy the **SPS or 30B databases** from the BR IFIC DVD ROM or the ITU website to the user's computer
- b. Open the SPS/30B database with **SpaceQry**
- c. Search networks published in the BR IFIC
- d. Select a network
- e. Click **“show coordination info”**

3. Using SpaceQry(2/5)



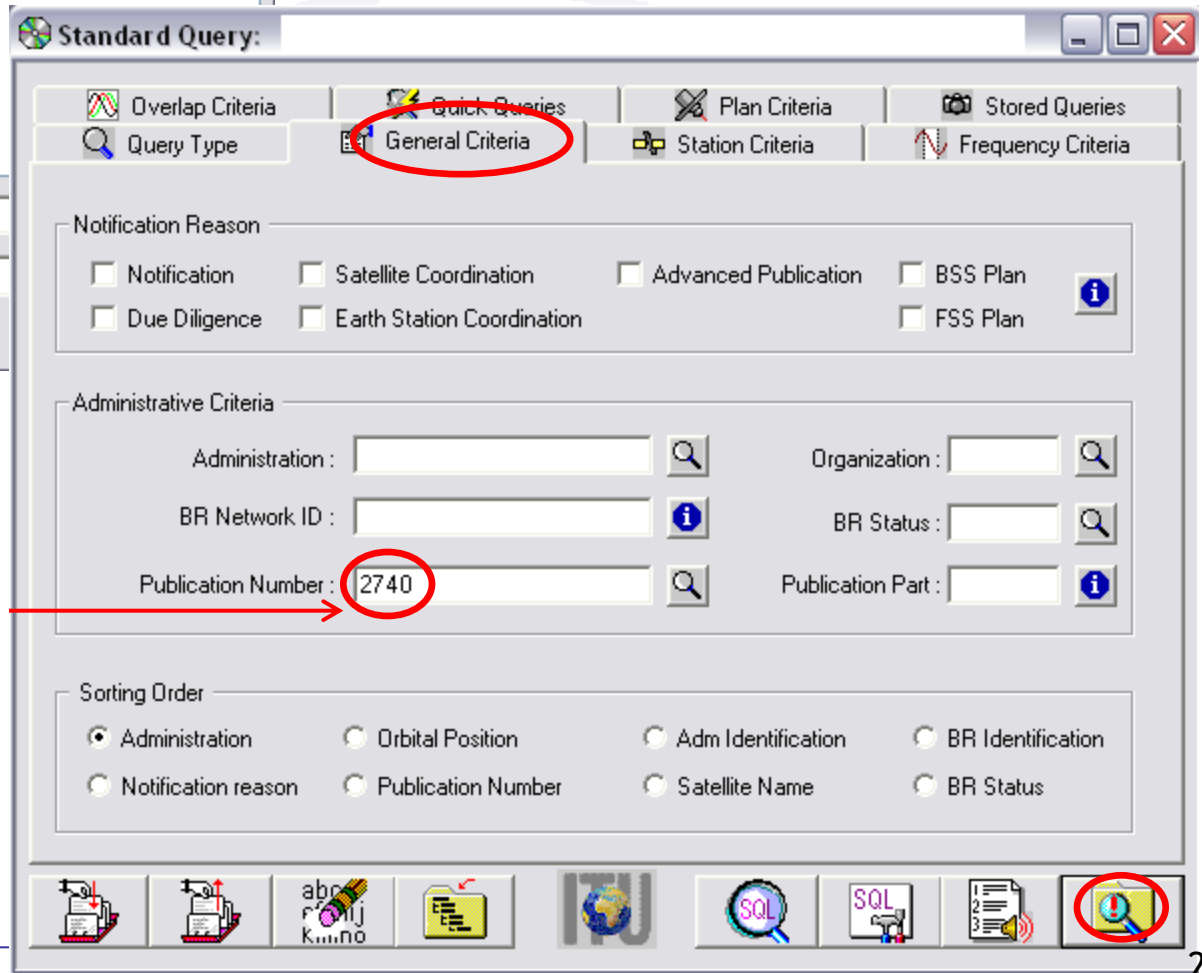
a.

3. Using SpaceQry(3/5)



b.

Number of the BR IFIC to be explored



c.

3. Using SpaceQry(4/5)

Space International Frequency Information Circular [SPS_ALL_IFIC2740]

Use IFIC filter

List of (7) Space Networks / Earth Stations for SPS_ALL_IFIC2723

+/-	Notice ID	Adm	Org	Type	Satellite Name	Orbital Position	Station Name	Rsn	Date Received
A	112552004	G		G	UKPAC BSS-1	172.00		B	16.02.2012
A	112555005	G		G	USAT-67W	-67.00		B	06.03.2012
A	112554002	IRN		G	IRANDBS				
A	112552003	PNG		G	AFRISAT I				
A	112554003	PNG		G	AFRISAT I				
A	112552005	PNG		G	PACIFISAT				
A	112552006	PNG		G	PACIFISAT				

f.

d.

Space International Frequency Information Circular [SPS_ALL_IFIC2740]

Use IFIC filter

Plan Notice Details

ID: 112552004 Plan: WRC-00 DL Date Rcvd: 16.02.2012 Status: 24 IFIC No/Part: 2740 / ss

Admin: G Org: Adm Ref Id:

Action: A Type: G Ntf Reason: B 4.1.3

Geostationary Satellite Details

Sat Name: UKPAC BSS-1 Nominal Long: 172.00 Tolerance East: .05
Tolerance West: .05
Inclination: .00

Beam Details (2)

+ / -	Beam	E / R	Gain (dB)	xGain (dB)	Radiation Pattern
	TX1R	E	37.00	7.00	
	TX2R	E	49.00	19.00	

3. Using SpaceQry(5/5)

e.

The screenshot shows two windows from the SpaceQry application. The main window, titled 'List of Affected Networks for 112552004', displays a table with 12 rows of network data. An inset window, titled 'Plan Coordination for Network: ...', provides a detailed view of the 'Plan Coordination Requirements for Network 112552004'. This inset window contains a table with columns for IFIC no, Provision, Status, Adm, and Org.

Coordination Provision	Agreement Code	Adm	Org	Ctry	Satellite Name	Orbital Position	Affected Network	Rsn	In Status	Caus-ing	Rec in
A30#4.1.1E	I	CYP			KYPROS-ACHILLEAS	174.00	111520240	C	50		F
A30#4.1.1E	I	F			F-SAT-E-164.1E						
A30#4.1.1E	I	F			F-SAT-E-170.5E						
A30#4.1.1E	I	PNG			PACIFISAT C/KU-3						
A30#4.1.1E	I	USA			INTELSAT7 177E						
A30#4.1.1E	I	USA			INTELSAT7 177E						
A30#4.1.1E	I	USA			INTELSAT7 178E						
A30#4.1.1E	I	USA			INTELSAT7 178E						
A30#4.1.1E	I	USA			INTELSAT8 178E						
A30#4.1.1E	I	USA			INTELSAT8 178E						
A30#4.1.1E	I	USA			USASAT-14K						
A30#4.1.1E	I	USA			USASAT-14K						

Plan Coordination Requirements for Network 112552004				
IFIC no	Provision	Status	Adm	Org
2723	A30#4.1.1A	I	TON	
	A30#4.1.1B	I		USA
	A30#4.1.1D	I		
	A30#4.1.1E	I	CYP	

Notice of the incoming satellite network

Number of BR IFIC where the incoming satellite network was published

Provision

Potentially affected administrations

To comment: how to identify administrations affected by a proposed satellite network?

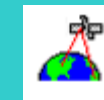


1. SpaceCom – Plan

2. Searching the BR IFIC



3. Using SpaceQry



4. Examining the SPS or 30B databases 

5. Using SNS-OnLine

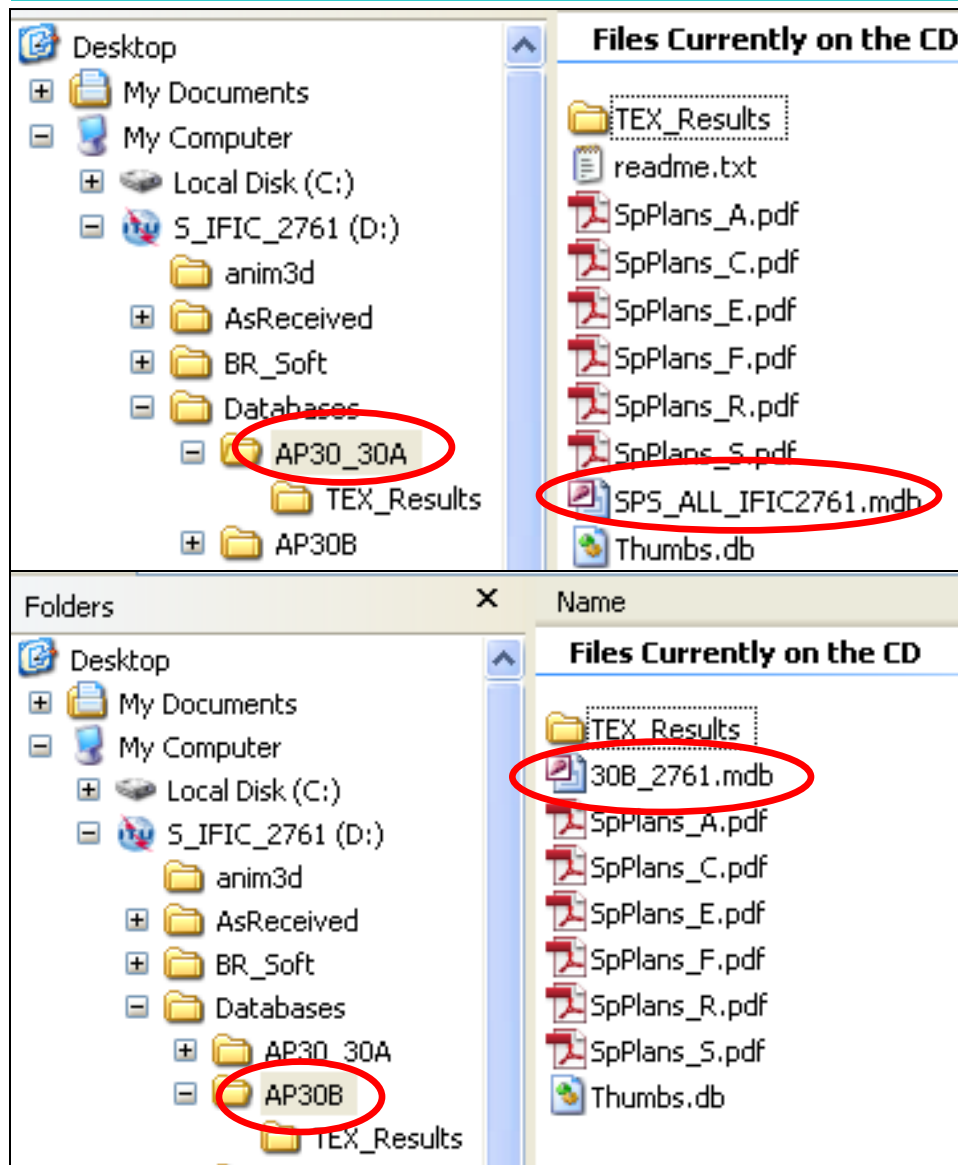


4. Examining the SPS or 30B databases(1/5)

The main steps are:

- a. Copy the **SPS or 30B databases** from the BR IFIC DVD ROM or the ITU website to the user's computer
1. For AP30/E/, AP30A/E/, AP30-30A/E/ (Part A) and AP30B/A6A:
 - b. Open the SPS/30B database using **Microsoft ACCESS**. Open the **“tr_provn”** and the **“tr_aff_ntw”** table
 - c. For both tables, use the “filter for” tool in the **“adm”** field to find the relevant records of the affected administration
 - d. Note the notice ID, BR IFIC no. and the provision number of the affecting network
2. For AP30-30A/F/C:
 - b. Open the SPS database using **Microsoft ACCESS**. Open the **“provn”** table
 - c. Use the “filter for” tool in the **“adm”** field to find the relevant records of the affected administration
 - d. Note the group ID (corresponding notice ID may be found in **“grp”** table) and the provision number of the affecting network

4. Examining the SPS or 30B databases(2/5)



a.

4. Examining the SPS or 30B databases(3/5)

SPS_ALL

All Access Objects

- srs_oOak
- srv_area
- srv_cls
- st_queue
- strap
- tr_aff_ntw
- tr_provn**
- upd_hist

Rea... Num Lock

1.b.

1.c.

ntc_id	coord_prov	agree_st	wic_no	seq_no	coord_st	adm	ntwk org
112555005	A30#4.2.3E6	I	2740	3		J	Sort A to Z
112555005	A30#4.2.3E6	I	2740	4		LUX	Sort Z to A
112555005	A30#4.2.3E6	I	2740	5		RUS	Clear filter from
112555005	A30#4.2.3E6	I	2740	6		LAO	Text Filters
112555005	A30#4.2.3E7	I	2740	1			<input type="checkbox"/> (Select All)
112555005	A30#4.2.3F	I	2740	1			<input type="checkbox"/> (Blanks)
112555005	A30A#4.1.1D	I	2740	1			<input type="checkbox"/> J
112555005	A30A#4.2.2A	I	2740	1			<input checked="" type="checkbox"/> LAO
112555005	A30A#4.2.2B	I	2740	1			<input type="checkbox"/> LUX
*							<input type="checkbox"/> RUS

Notice of the incoming satellite network

Provision

Number of BR IFIC where the incoming satellite network was published

Potentially affected administrations

4. Examining the SPS or 30B databases(4/5)

ntc_id	coord_prov	agree_st	wic_no	seq_no	coord_st	adm
112555005	A30#4.2.3E6	I	2740	6		LAO

1.b.

ntc_id	coord_prov	agree_st	aff_ntc_id	adm	ntwk_org
112555005	A30#4.2.3E6	I	97520363	B	
112555005	A30#4.2.3E6	I	98500237	USA	
112555005	A30#4.2.3E6	I	102556001	USA	
112555005	A30#4.2.3E6	I	104500485	B	
112555005	A30#4.2.3E6	I	108520178	HOL	
112555005	A30#4.2.3E6	I	109520263	J	
112555005	A30#4.2.3E6	I	110500126	LAO	
112555005	A30#4.2.3E6	I	110520220	LUX	
112555005	A30#4.2.3E6	I	110520363	RUS	
112555005	A30#4.2.3E6	I	311500051	USA	

1.c.

↑
Notice of the incoming satellite network

↑
Provision

↑
Notice of the affected satellite network

- (Select All)
- (Blanks)
- B
- HOL
- J
- LAO

4. Examining the SPS or 30B databases(5/5)

grp_id	coord_prov	agree_st	seq_no	coord_st	adm	ntwk_org	ctry
5764	9.7	A	2		CAN		
5764	9.7	A	3		G		
5764	9.7	A	4		J		
5764	A30#4.2.3D	N	1				
5764	A30#7.1	Q	1				
5764	A30A#7.1	T	1				
5764	A30A#7.1	T	2				

- All Access Objects
- ntc_memo
 - ntc_upd
 - orbit
 - orbit_Ink
 - ovrl_epm
 - phase
 - pl_strap
 - plan
 - provn**
 - pub_ssn
 - pwr_ctrl

Group id of the incoming satellite network

Provision

Potentially affected administrations

Sort A to Z
Sort Z to A
Clear filter from adm

Text Filters

- ISR
- J
- JMC
- KAZ
- KGZ
- KNA
- KOR
- KRE
- LAO
- LBN

OK Cancel

2.c.

2.b.

To comment: how to identify administrations affected by a proposed satellite network?



1. SpaceCom – Plan

2. Searching the BR IFIC



3. Using SpaceQry



4. Examining the SPS or 30B databases 

5. Using SNS-OnLine



5. Using SNS-OnLine (1/3)


The main steps are:

- a. With your TIES account, connect to <http://www.itu.int/sns/plans.html>
- b. Input data and Submit
- c. “See TSUM” of the selected network
- d. Use the “Find” facility in the Coordination requirements to find the relevant records of the affected administration

5. Using SNS-OnLine (2/3)

a.

http://www/sns/plans.html - Windows Internet Explorer

 Radiocommunication

Space Network Systems Online

Space Plans Query System

NETWORKS INFORMATION

Enter data	or enter notice identifier
Satellite Name : <input type="text" value="NSS-BSS 134E"/>	Notice identifier : <input type="text"/>
Notifying Administration : <input type="text"/>	
Network Organization : <input type="text"/>	
Longitude (from) : <input type="text" value="-180"/> (to) : <input type="text" value="180"/>	

Select plan then click 'Submit' to run query or 'Cancel' to restart

BSS Plans & Lists (AP30/30A)

<input checked="" type="radio"/> Region 1&3 Downlink (AP30)	<input type="radio"/> Region 1&3 Feeder-link (AP30A)	<input type="radio"/> Region 2 (AP30/30A)	<input type="radio"/> All
<input checked="" type="radio"/> Article 4 (Seeking agreement)	<input type="radio"/> Article 5 (Notification)	<input type="radio"/> Due Diligence (Res.49)	<input type="radio"/> PLAN/List <input type="radio"/> All

Guardbands (Space Operation Functions)

<input type="radio"/> Article 2A (Coordination)	<input type="radio"/> Article 11 (Notification)	<input type="radio"/> All
---	---	---------------------------

or

FSS Plan (AP30B)

<input type="radio"/> Article 6 (Seeking agreement)	<input type="radio"/> Article 8 (Notification)	<input type="radio"/> Due Diligence (Res.49)	<input type="radio"/> PLAN/List <input type="radio"/> All
---	--	--	---

b.

5. Using SNS-OnLine (3/3)

C.

SATELLITE NAME	CATEGORY	DATE OF RECEIPT	NOTICE ID.	PLAN ID.	ADM	NTWK ORG	LONGITUDE DETAILS	STATUS	BR IFIC
NSS-BSS 134E	B	19.07.2010	110552010	00DN	HOL	134	See TSUM	24	2682

d.

COORDINATION									
Provision	Status	BR IFIC	Coord.	Status	Admin.	Ntwk Org.	Country		
A30#4.1.1A	I	2682				CHN			
A30#4.1.1A	I	2682				NRU			
A30#4.1.1A	I	2682				PNG			
A30#4.1.1A	I	2682				RUS			
A30#4.1.1B	I	2682				CHN			
A30#4.1.1B	I	2682				HOL			
A30#4.1.1B	I	2682				J			
A30#4.1.1B	I	2682				LAO			
A30#4.1.1C	I	2682							

Web links for further information



SpaceCom software:

<http://www.itu.int/en/ITU-R/software/Pages/spacecom.aspx>

SpaceQry software:

<http://www.itu.int/en/ITU-R/software/Pages/spaceqry.aspx>

BR IFIC:

<http://www.itu.int/ITU-R/go/space-brific/en>

SPS/30B databases:

<http://www.itu.int/en/ITU-R/space/plans/Pages/AP30-30A.aspx>

<http://www.itu.int/en/ITU-R/space/plans/Pages/AP30B.aspx>

SNS On line:

<http://www.itu.int/sns/>



Any question?

E-mail: alvaro.devega@itu.int

A promotional poster for the ITU World Radiocommunication Seminar 2014. The top half features a photograph of the Jet d'Eau fountain in Geneva, Switzerland, with the city and mountains in the background under a blue sky. The bottom half is a solid red background. At the top of the red section, the text 'International Telecommunication Union' is written in white. Below this is a large, stylized white ITU logo. The main title 'WORLD RADIOCOMMUNICATION SEMINAR 2014' is written in white, bold, sans-serif font. Below the title, the dates and location 'GENEVA, 8-12 DECEMBER 2014' are displayed in white. The website 'www.itu.int/go/ITU-R/WRS-14' is listed below. At the bottom left is a QR code. At the bottom center is the '150 1865 2015' logo. At the bottom right is the 'Organised by:' text followed by the ITU logo and a smaller satellite logo.