



Commenting on AP30* Special Sections

Workshop on Space Plan services
(AP30/30A/30B)

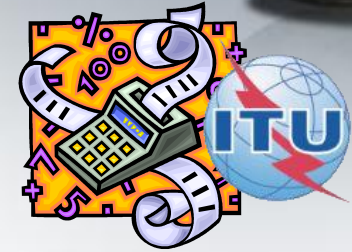
Presented by
SSD Space Notification and Plans Division

Commenting on Special Sections



BR Examination

on proposed satellite network
identifies affected Administrations

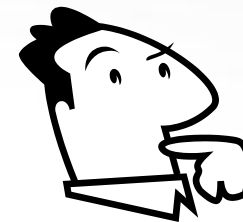


Publication

of results in BR IFIC Special Sections



**Affected Administrations have
4 months to comment**



**i.e to inform BR and Notifying Administration of their agreement
for interfering OR their request for coordination/objection**

Commenting on Special Sections

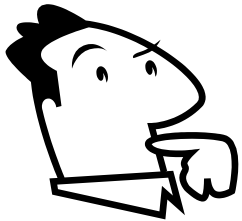


Publications subject to comments:

- AP30/E/, AP30/E/, AP30-30A/E/ (Part A)
- AP30-30A/F/C/
- AP30B/A6A/

Publications NOT subject to comments:

- AP30/E/, AP30/E/, AP30-30A/E/ (Part D, B, C)
- AP30-30A/F/D/
- AP30B/A6B/
- AP30B/A7/
- RES49/
- Part S-I, II, III



Commenting on AP30*/E Part A Special Sections



BSS PLAN

Special Sections:



AP30/E/ (Part A) ; AP30A/E/ (Part A); AP30-30A/E/ (Part A)

All provisions identifying potentially affected Administrations

Region 1&3: A30#4.1.1A/B/C/D/E A30A#4.1.1A4/A7/B4/B7/C/D A30A#4.1.1D(Art.2A)

Region 2: A30#4.2.3A/B/C/D/E6/E7/F A30A#4.2.2A/B/C

To comment within 4 months, the Administrations identified above use:



SpaceCom software
To express disagreement
(agreement by default)



Results in Special Sections:

AP30/E/ (Part D) ; AP30A/E/ (Part D); AP30-30A/E/ (Part D)



Commenting on AP30-30A/F/C Special Sections



SOF in planned bands
Special Section:
AP30-30A/F/C/



BR examination
under:
AP30#4.1.1D
AP30#4.2.3D

BR examination
under:
RR 9.7
AP30#7.1
AP30A#7.1

To comment within 4 months, the Administrations identified above use:



SpaceCom software
To express disagreement
(agreement by default)

Telefax to BR / notifying Adm
To express comment
(disagreement by default)



NO
SpaceCom !

Results in Special Section:
AP30-30A/F/D/



NO
Publication 

Commenting on AP30B/A6A/ Special Sections



FSS PLAN Special Section: AP30B/A6A/



BR examination under:
AP30B#6.5
Coordination requirements

BR examination under:
AP30B#6.6
Territory in the Service Area

To comment within 4 months, Administrations identified above use:



Telefax to BR / notifying Adm
To express comment
(No reply = Disagreement)



NO
SpaceCom !



Notifying Adm requests BR assistance
6.14- BR telefax to affected Adm asked

To send decision within 1 month, Administrations asked above use:



Telefax to BR
To express : agreement or disagreement
(No reply = Agreement)



6.15 BR Conclusion telefax



NO
Publication!

Notifying Adm shall
seek agreement



NO Commenting
time period !



Telefax to BR / notifying Adm
To express Agreement or
Disagreement

To comment: how identifying administrations affected by a proposed satellite network?



1. SpaceCom – Plan

2. Searching the BR IFIC



3. Using SpaceQry



4. Examining the SPS or 30B databases



5. Using SNS-OnLine



**30B and SPS report – detailed information
cf. 30B and SPS workshops**

To comment: how identifying administrations affected by a proposed satellite network?



1. SpaceCom – Plan

2. Searching the BR IFIC



3. Using SpaceQry



4. Examining the SPS or 30B databases

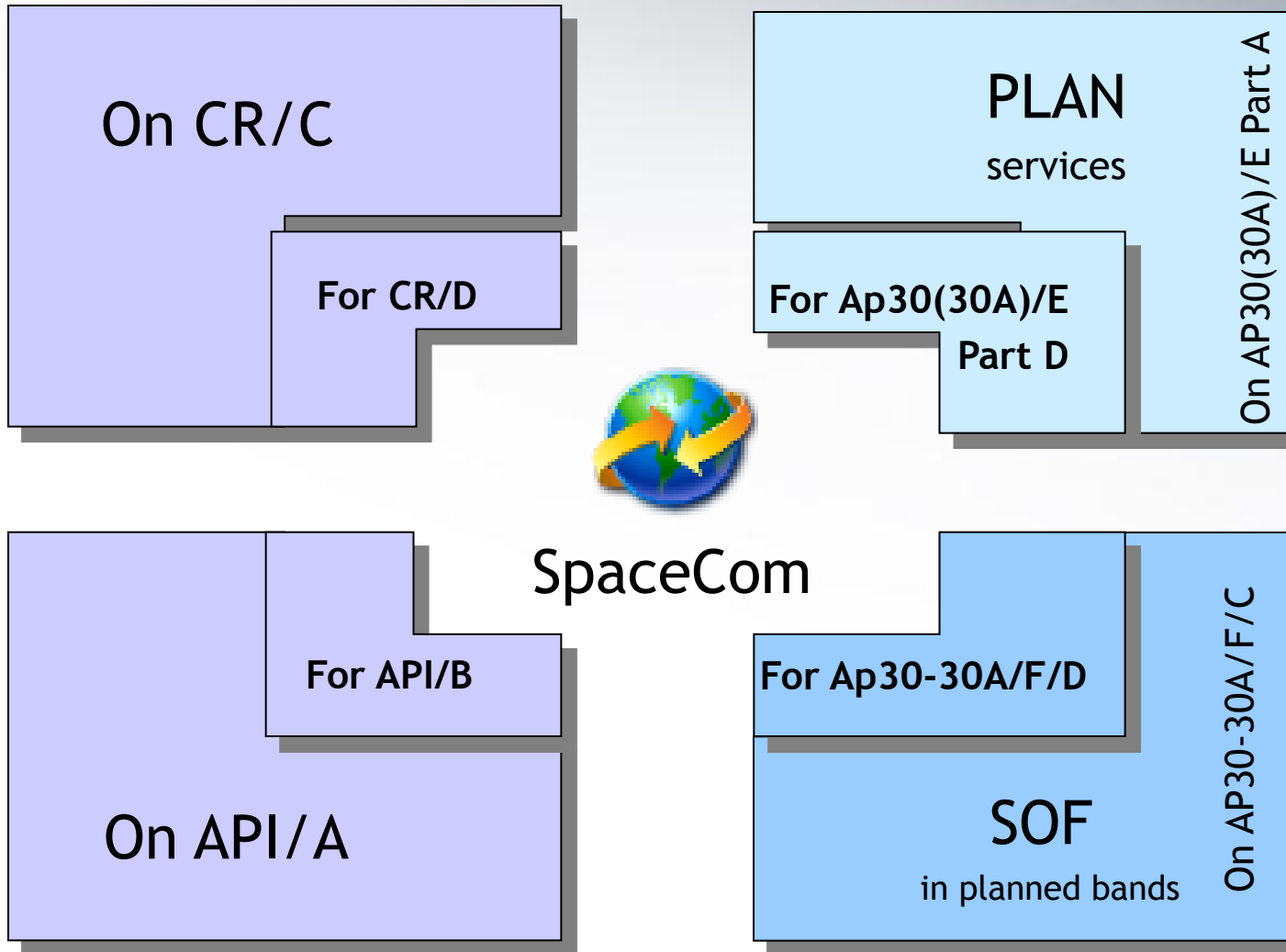


5. Using SNS-OnLine





1. SpaceCom - Plan (1/4)

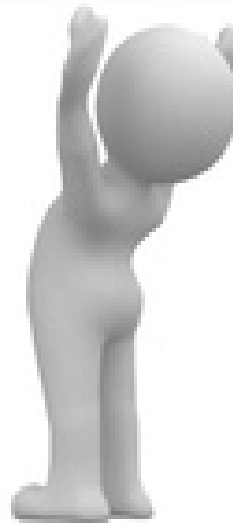


Potentially
Affected Adm.



Notifying
Adm. 

**Publish BR IFIC
AP30*/E Part A**



Potentially Affected Adm.

Capture comments
4 months time-period



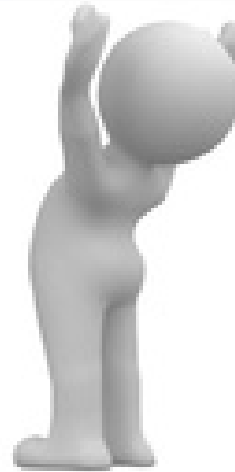
SPS_mdb



ITU-R



Publish BR IFIC
AP30*/E Part A

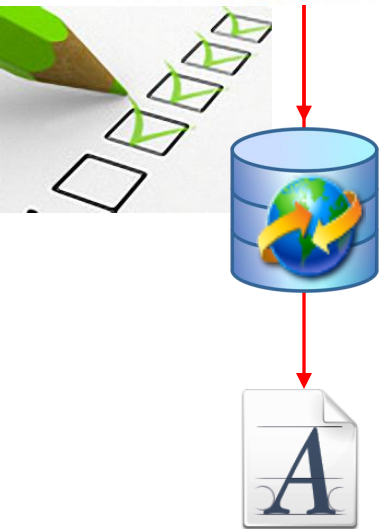


Notifying Adm.



Potentially Affected Adm.

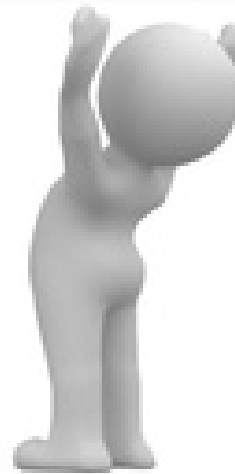
**Complete, validate,
Send comments file**



ITU-R



Notifying Adm.



**Only SpaceCom files
Receivable**

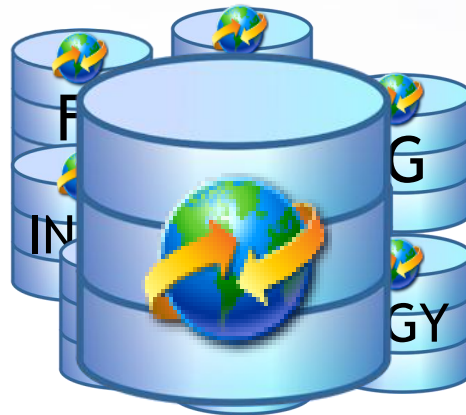
Potentially
Affected Adm.

ITU-R



Analyses comments
Creates SpaceCom draft mdb
AP30*/E Part D

Notifying
Adm.



Potentially
Affected Adm.

ITU-R 

Notifying
Adm. 

View SpaceCom
Draft Part D mdb

BR IFIC with posted
SpaceCom Draft mdb

Validate Draft Part D
1month time-period
Send Draft Part D file



 Draft mdb



Draft mdb 



Potentially
Affected Adm.

ITU-R



Notifying
Adm.



**Publish BR IFIC
with
AP30*/E Part D**





1. SpaceCom - Plan (4/4)



- Practice in next session of the workshop

To comment: how identifying administrations affected by a proposed satellite network?



1. SpaceCom – Plan

2. Searching the BR IFIC



3. Using SpaceQry



4. Examining the SPS or 30B database



5. Using SNS-OnLine







2. Searching the BR IFIC (1/3)



The main steps are:


- a. **Insert**  **in the user's computer**
- b. **Click on BR IFIC Publications**
- c. **Click on Special Sections / AP30***
- d. **Open each AP30/E, AP30A/E, AP30-30A/E Part A, AP30-30A/F/C or AP30B/A6A**
Special Section (PDF format) 
- e. **Use the Adobe Acrobat "Find" tool to search for the 3 digits abbreviation of the subject administration**
- f. **Note the name of the affecting network and the provision number**

2. Searching the BR IFIC (2/3)



b.

BR IFIC SPACE

BR IFIC 2723 International Frequency Information Circular (Space Services) **10.07.2012** 

BR IFIC Publications: Databases, As received (Res.55), Preface, Cost Recovery, BR Software, BR Circular Letters

Special Sections: -- ALL --, AP30-30A/E, AP30/E, AP30A/E, **AP30B/A6A** C., AP30B/A6B, API/A

Parts I-S, II-S, III-S: -- ALL --, PART I-S, PART II-S, PART III-S

Administrations: -- ALL --, S

BR IFIC PUBLICATIONS – TABLE OF CONTENTS

Print: AP30B/A6A
Print Table of Contents

SPECIAL SECTION / PART	PLAN PART	RESPONSIBLE ADMINISTRATION		NAME OF THE SPACE STATION	ORB. POS.	NAME OF THE ASSOCIATED EARTH STATION	IDENTIFICATION NUMBER
		ADM.	INTERG. ORG.				
AP30B/A6A/220	S			SIRIUS-30B-5E-5	S		112559007

Search Exit

عربي English 中文 Español Français Русский

d.

Identifying administrations affected by a proposed satellite network

2. Searching the BR IFIC (3/3)



AP 30B-A6a0220.pdf - Adobe Reader

Fichier Edition Affichage Fenêtre Aide

1 / 100 58.2%

Outils Commentaire

SUI

UIT ITU

UNION INTERNATIONALE DES TÉLÉCOMMUNICATIONS
BUREAU DES RADIOCOMMUNICATIONS

INTERNATIONAL TELECOMMUNICATION UNION
RADIOCOMMUNICATION BUREAU

UNIÓN INTERNACIONAL DE TELECOMUNICACIONES
OFICINA DE RADIOCOMUNICACIONES

© I.T.U.

RÉSEAU À SATELLITE SATELLITE NETWORK RED DE SATELITE	SIRIUS-30B-5E-5		SECTION SPÉCIALE N° SPECIAL SECTION NO. SECCIÓN ESPECIAL N.º	AP30B/A6A/220
ADM. RESPONSABLE RESPONSIBLE ADM. ADM. RESPONSABLE	S	LONGITUDE NOMINALE NOMINAL LONGITUDE LONGITUD NOMINAL	5 E	BR IFIC / DATE BR IFIC / DATE BR IFIC / FECHA
NOTIFIÉ AU NOM DE NOTIFIED ON BEHALF OF NOTIFICADA EN NOMBRE DE			NUMÉRO D'IDENTIFICATION IDENTIFICATION NUMBER NÚMERO DE IDENTIFICACIÓN	112559007
RENSEIGNEMENTS REÇUS PAR LE BUREAU LE / INFORMATION RECEIVED BY THE BUREAU ON / INFORMACIÓN RECIBIDA POR LA OFICINA EL				23.01.2012

e.

AP 30B-A6a0220.pdf - Adobe Reader

Fichier Edition Affichage Fenêtre Aide

93 / 100 78.4%

Outils Commentaire

SUI

Administrations et/ou réseaux à satellite affectés / Affected administrations and/or satellite networks / Administraciones y/o redes de satélite afectadas
受影响的主管部门和/或卫星网络 / Затронутые администрации и/или спутниковые сети / أو الشبكات الساتلية المتأثرة للإدارات و

A5 Coordinations	A1f1 Notifying adm.	A1f3 Inter. sat. org.	BR80 Status of identified network	A1a Sat. Network / A1b Plan beam identification	BR6a Id. no.	A4a1 Orbital long.	BR79 Max. degradation
App.30B, Art.6, § 6.5 - Annexe 4 App.30B, Art.6, § 6.5 - Annex 4 Ap.30B, Art.6, § 6.5 - Anexo 4 附录30B, 第6条, 第6.5段- 附件4 Пр. 30B, Ст. 6, п. 6.5 – Дополнение 4 الفاتيل 30B, المادة 6, الفقرة 6.5 – الملحق 4							
§2.1 (6/4 GHz)	ALB		Allotment	ALB00000	90558006	4.13 E	15.705
	CMR		Allotment	CMR00000	90558053	7.98 E	8.014
	CTI	RAS	List	RASCOM-1P	103559025	2.9 E	7.842
			List	RASCOM-2P	102559002	2.9 E	4.842
	CYP		Allotment	CYP00000	90558062	0.5 E	2.450
	MDR		Allotment	MDR00000	90558154	0.8 E	4.370
	SUI		Allotment	SUI00000	90558192	9.45 E	4.393
TUN		Allotment	TUN00000	90558202	5.74 E	15.220	
TUR		Allotment	TUR00000	90558203	8.5 E	6.332	
§2.1 (11/10-11 GHz)	ATL		Allotment	ATL00000	90558206	4.13 E	15.018

f.

To comment: how identifying administrations affected by a proposed satellite network?



1. SpaceCom – Plan

2. Searching the BR IFIC



3. Using SpaceQry



4. Examining the SPS or 30B databases



5. Using SNS-OnLine





3. Using SpaceQry(1/5)



The main steps are:

- a. Copy the **SPS or A30B databases** from the BR IFIC DVD ROM or the ITU website to the user's computer
- b. Open the SPS/30B database with **SpaceQry**
- c. Search networks published in the BR IFIC
- d. Select a network
- e. Click **“show coordination info”**



3. Using SpaceQry(2/5)

Address D:\Databases\SpacePlans\SPS

Folders X

- Desktop
- My Documents
- My Computer
 - Local Disk (C:)
 - S_IFIC_2740 (D:)
 - anim3d
 - AsReceived
 - BR_Soft
 - Databases
 - GIMS_Data
 - IFIC_Archive
 - IFIC_Data
 - SpaceCom
 - SpacePlans
 - AP30B
 - MSPACEg_results
 - SPS**
 - SRS_Data

a.

Name

Files Currently on the CD

- readme.txt
- SPS_ALL_IFIC2740.mdb

Name

Files Currently on the CD

- readme.txt
- SPS_ALL_IFIC2740.mdb

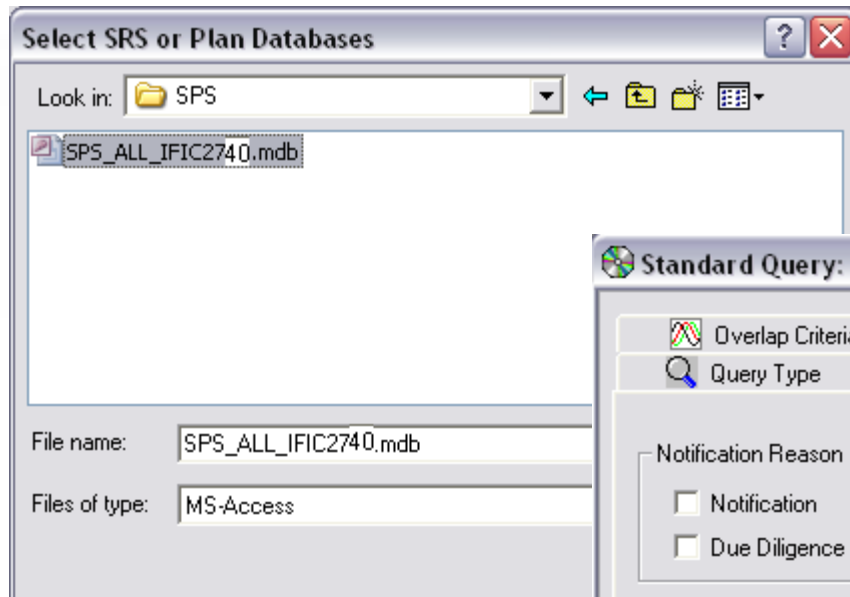
Name

Files Currently on the CD

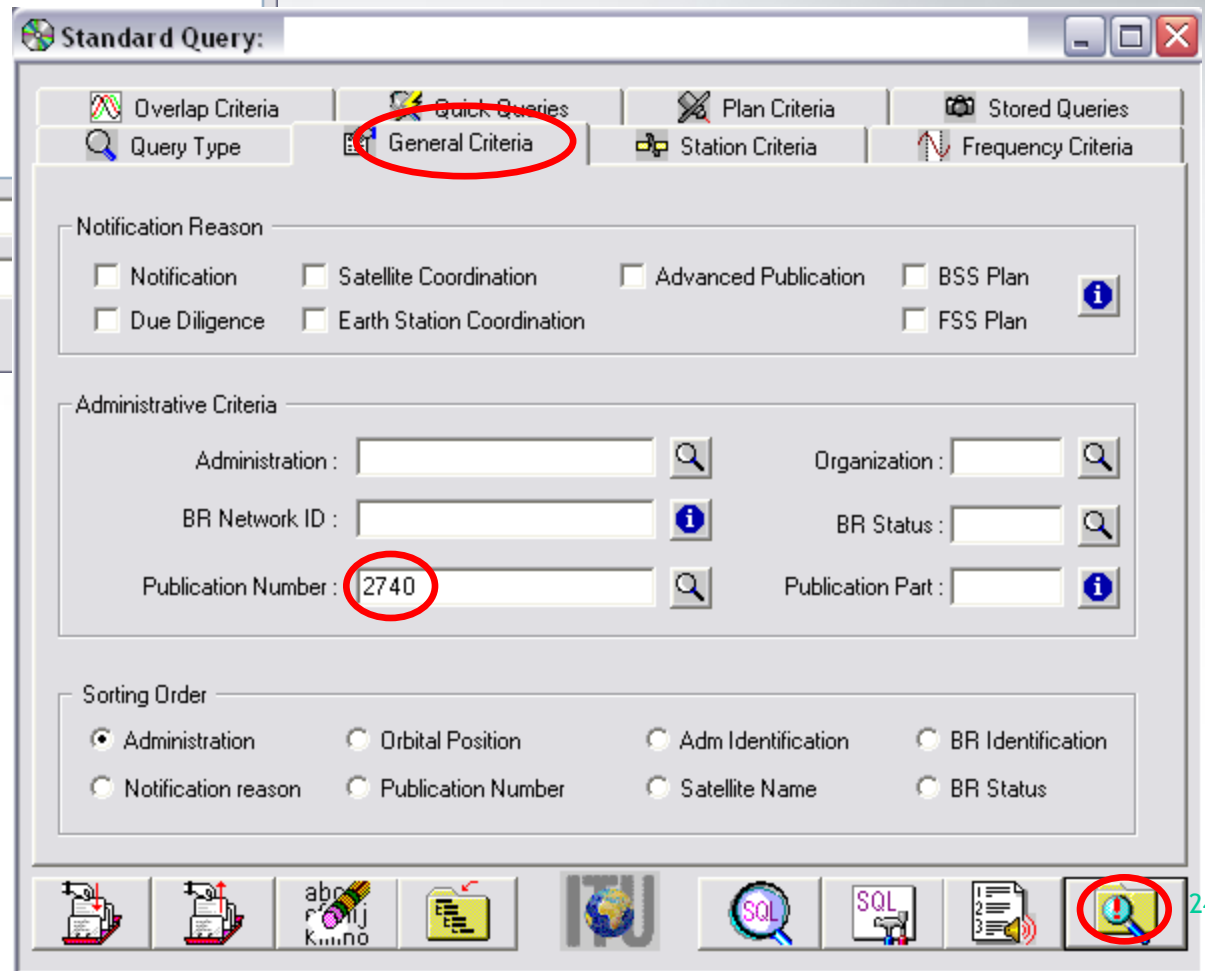
- GIBC_Results
- 30B_2740.mdb



3. Using SpaceQry(3/5)



c.





3. Using SpaceQry(4/5)



Space International Frequency Information Circular [SPS_ALL_IFIC2740]

Use IFIC filter

List of (7) Space Networks / Earth Stations for SPS_ALL_IFIC2723

+/-	Notice ID	Adm	Org	Type	Satellite Name	Orbital Position	Station Name	Rsn	Date Received
A	112552004	G		G	UKPAC BSS-1	172.00		B	16.02.2012
A	112555005	G		G	USAT-67W	-67.00		B	06.03.2012
A	112554002	IRN		G	IRANDBS				
A	112552003	PNG		G	AFRISAT I				
A	112554003	PNG		G	AFRISAT I				
A	112552005	PNG		G	PACIFISAT				
A	112552006	PNG		G	PACIFISAT				

f.

d.

Space International Frequency Information Circular [SPS_ALL_IFIC2740]

Use IFIC filter

Plan Notice Details

ID: 112552004 Plan: WRC-00 DL Date Rcvd: 16.02.2012 Status: 24 IFIC No/Part: 2740 / ss

Admin: G Org: Adm Ref Id:

Action: A Type: G Ntf Reason: B 4.1.3

Geostationary Satellite Details

Sat Name: UKPAC BSS-1 Nominal Long: 172.00 Tolerance East: .05
Tolerance West: .05
Inclination: .00

Beam Details (2)

+ / -	Beam	E / R	Gain (dB)	xGain (dB)	Radiation Pattern
	TX1R	E	37.00	7.00	
	TX2R	E	49.00	19.00	



3. Using SpaceQry(5/5)



List of Affected Networks for 112552004

Coordination Provision	Agreement Code	Adm	Org	Ctry	Satellite Name	Orbital Position	Affected Network	Rsn	In Status	Caus-ing	Rec in
A30#4.1.1E	I	CYP			KYPROS-ACHILLEAS	174.00	111520240	C	50		F
A30#4.1.1E	I	F			F-SAT-E-164.1E						
A30#4.1.1E	I	F			F-SAT-E-170.5E						
A30#4.1.1E	I	PNG			PACIFISAT C/KU-3						
A30#4.1.1E	I	USA			INTELSAT7 177E						
A30#4.1.1E	I	USA			INTELSAT7 177E						
A30#4.1.1E	I	USA			INTELSAT7 178E						
A30#4.1.1E	I	USA			INTELSAT7 178E						
A30#4.1.1E	I	USA			INTELSAT8 178E						
A30#4.1.1E	I	USA			INTELSAT8 178E						
A30#4.1.1E	I	USA			USASAT-14K						
A30#4.1.1E	I	USA			USASAT-14K						

Plan Coordination for Network: ...

Plan Coordination Requirements for Network 112552004

IFIC no	Provision	Status	Adm	Org
2723	A30#4.1.1A	I	TON	
			USA	
	A30#4.1.1B	I		
	A30#4.1.1D	I		
	A30#4.1.1E	I	CYP	

e.

To comment: how identifying administrations affected by a proposed satellite network?



1. SpaceCom – Plan

2. Searching the BR IFIC



3. Using SpaceQry



4. Examining the SPS or 30B databases



5. Using SNS-OnLine



4. Examining the SPS or 30B databases(1/4)



The main steps are:

- a. Copy the **SPS or 30B databases** from the BR IFIC DVD ROM or the ITU website to the user's computer
- b. Open the SPS/30B database using **Microsoft ACCESS**. Open the **"tr_provn"** table
- c. In the **"adm"** field, use the **"filter for"** tool to find the relevant records of the affected administration
- d. Note the notice ID, BR IFIC no. and the provision number of the affected network
- e. Repeat steps c) to e) with the **"tr_aff_ntw"** table



4. Examining the SPS or 30B databases(2/4)

Address **D:\Databases\SpacePlans\SPS**

Folders

- Desktop
- My Documents
- My Computer
 - Local Disk (C:)
 - S_IFIC_2740 (D:)
 - anim3d
 - AsReceived
 - BR_Soft
 - Databases
 - GIMS_Data
 - IFIC_Archive
 - IFIC_Data
 - SpaceCom
 - SpacePlans
 - AP30B
 - MSPACEg_results
 - SPS**
 - SRS_Data

Name

Files Currently on the CD

- readme.txt
- SPS_ALL_IFIC2740.mdb

Name

Files Currently on the CD

- readme.txt
- SPS_ALL_IFIC2740.mdb

Name

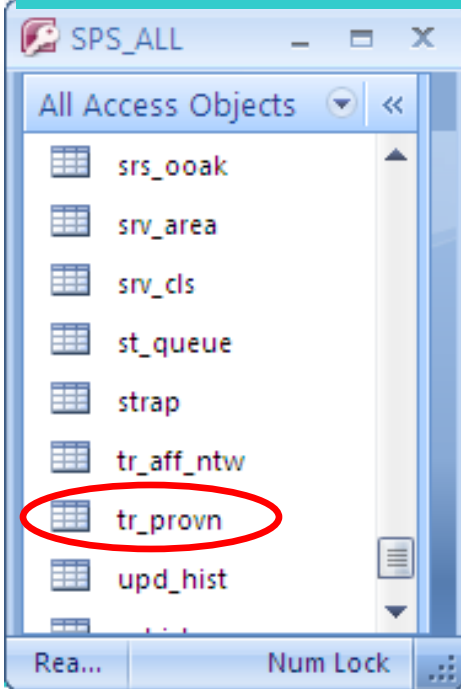
Files Currently on the CD

- GIBC_Results
- 30B_2740.mdb

a.



4. Examining the SPS or 30B databases(3/4)



b.

c.

tr_provn

ntc_id	coord_prov	agree_st	wic_no	seq_no	coord_st	adm	ntwk org
112555005	A30#4.2.3E6	I	2740	3		J	Sort A to Z
112555005	A30#4.2.3E6	I	2740	4		LUX	Sort Z to A
112555005	A30#4.2.3E6	I	2740	5		RUS	Clear filter from
112555005	A30#4.2.3E6	I	2740	6		LAO	Text Filters
112555005	A30#4.2.3E7	I	2740	1			<input type="checkbox"/> (Select All)
112555005	A30#4.2.3F	I	2740	1			<input type="checkbox"/> (Blanks)
112555005	A30A#4.1.1D	I	2740	1			<input type="checkbox"/> J
112555005	A30A#4.2.2A	I	2740	1			<input checked="" type="checkbox"/> LAO
112555005	A30A#4.2.2B	I	2740	1			<input type="checkbox"/> LUX
*							<input type="checkbox"/> RUS



4. Examining the SPS or 30B databases(4/4)

tr_provn

ntc_id	coord_prov	agree_st	wic_no	seq_no	coord_st	adm
112555005	A30#4.2.3E6	I	2740	6		LAO

d.

tr_aff_ntw

ntc_id	coord_prov	agree_st	aff_ntc_id	adm	ntwk_org	cl
112555005	A30#4.2.3E6	I	97520363	B		
112555005	A30#4.2.3E6	I	98500237	USA		
112555005	A30#4.2.3E6	I	102556001	USA		
112555005	A30#4.2.3E6	I	104500485	B		
112555005	A30#4.2.3E6	I	108520178	HOL		
112555005	A30#4.2.3E6	I	109520263	J		
112555005	A30#4.2.3E6	I	110500126	LAO		
112555005	A30#4.2.3E6	I	110520220	LUX		
112555005	A30#4.2.3E6	I	110520363	RUS		
112555005	A30#4.2.3E6	I	311500051	USA		

Filter menu:

- Sort A to Z
- Sort Z to A
- Clear filter from a
- Text Filters
 - (Select All)
 - (Blanks)
 - B
 - HOL
 - J
 - LAO

e.

To comment: how identifying administrations affected by a proposed satellite network?



1. SpaceCom – Plan

2. Searching the BR IFIC



3. Using SpaceQry



4. Examining the SPS database



5. Using SNS-OnLine





5. Using SNS-OnLine (1/3)



The main steps are:

- a. With your TIES account, connecting <http://www.itu.int/sns/plans.html>
- b. Input data and Submit
- c. “See TSUM” of the selected network
- d. Use the “Find” facility in the Coordination requirements to find the relevant records of the affected administration



5. Using SNS-OnLine (2/3)

a.

http://www/sns/plans.html - Windows Internet Explorer

Radiocommunication

Space Network Systems Online

Space Plans Query System

NETWORKS INFORMATION

Enter data	or enter notice identifier
Satellite Name : <input type="text" value="NSS-BSS 134E"/>	Notice identifier : <input type="text"/>
Notifying Administration : <input type="text" value=""/>	
Network Organization : <input type="text" value=""/>	
Longitude (from) : <input type="text" value="-180"/> (to) : <input type="text" value="180"/>	

Select plan then click 'Submit' to run query or 'Cancel' to restart

BSS Plans & Lists (AP30/30A)

Region 1&3 Downlink (AP30)
 Region 1&3 Feeder-link (AP30A)
 Region 2 (AP30/30A)
 All

Article 4 (Seeking agreement)
 Article 5 (Notification)
 Due Diligence (Res.49)
 PLAN/List
 All

Guardbands (Space Operation Functions)

Article 2A (Coordination)
 Article 11 (Notification)
 All

or

FSS Plan (AP30B)

Article 6 (Seeking agreement)
 Article 8 (Notification)
 Due Diligence (Res.49)
 PLAN/List
 All

b.



5. Using SNS-OnLine (3/3)

C.

SATELLITE NAME	CATEGORY	DATE OF RECEIPT	NOTICE ID.	PLAN ID.	ADM	NTWK ORG	LONGITUDE DETAILS	STATUS	BR IFIC
NSS-BSS 134E	B	19.07.2010	110552010	00DN	HOL	134	See TSUM	24	2682

d.

COORDINATION									
Provision	Status	BR IFIC	Coord.	Status	Admin.	Ntwk Org.	Country		
A30#4.1.1A	I	2682			CHN				
A30#4.1.1A	I	2682			NRU				
A30#4.1.1A	I	2682			PNG				
A30#4.1.1A	I	2682			RUS				
A30#4.1.1B	I	2682			CHN				
A30#4.1.1B	I	2682			HOL				
A30#4.1.1B	I	2682			J				
A30#4.1.1B	I	2682			LAO				
A30#4.1.1C	I	2682							

Web links for further information



SpaceCom software:

<http://www.itu.int/en/ITU-R/software/Pages/spacecom.aspx>

SpaceQry software:

<http://www.itu.int/en/ITU-R/software/Pages/spaceqry.aspx>

BR IFIC:

<http://www.itu.int/ITU-R/go/space-brific/en>

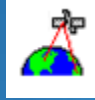
SPS/30B databases:

<http://www.itu.int/en/ITU-R/space/plans/Pages/AP30-30A.aspx>

<http://www.itu.int/en/ITU-R/space/plans/Pages/AP30B.aspx>

SNS On line:

<http://www.itu.int/sns/>



Your questions are welcome

Main contact person for Space Plan Services: Mitsuhiro.Sakamoto@itu.int

Presenter: Veronique.Glaude@itu.int

Thanks!