



30<sup>TH</sup> WORLD RADIOCOMMUNICATION SEMINAR

24 – 28 October 2022

Geneva, Switzerland

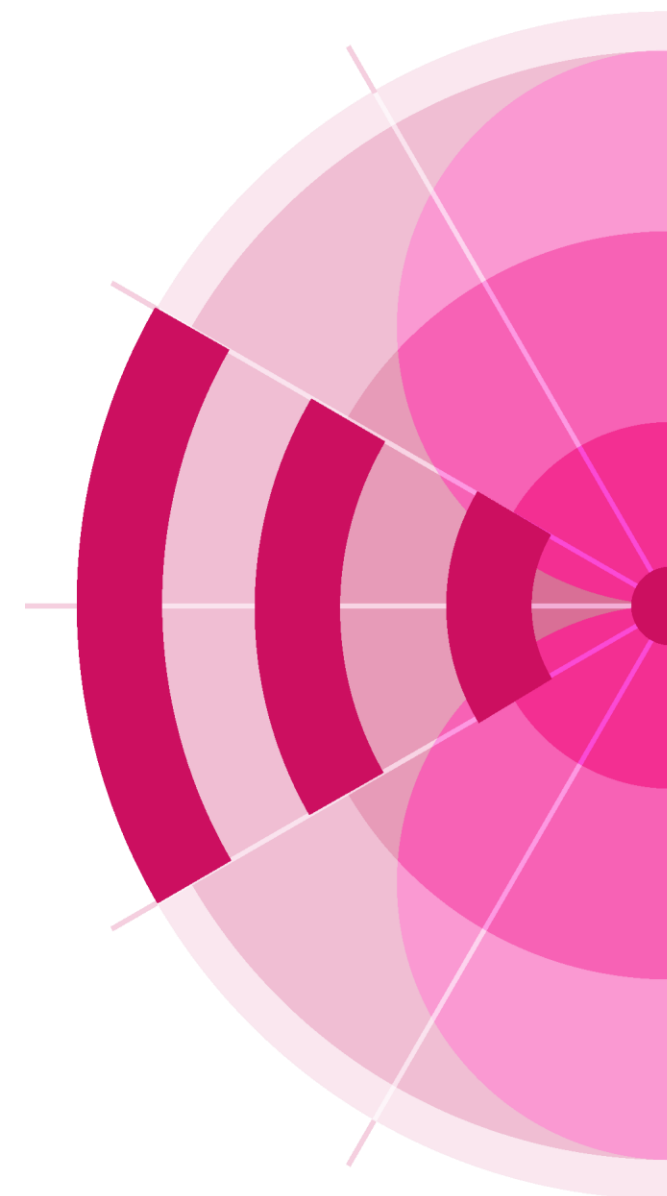
# Commenting on CR/C Special Sections

**Cessy KARINA**

Space Services Department,  
Radiocommunication Bureau, ITU

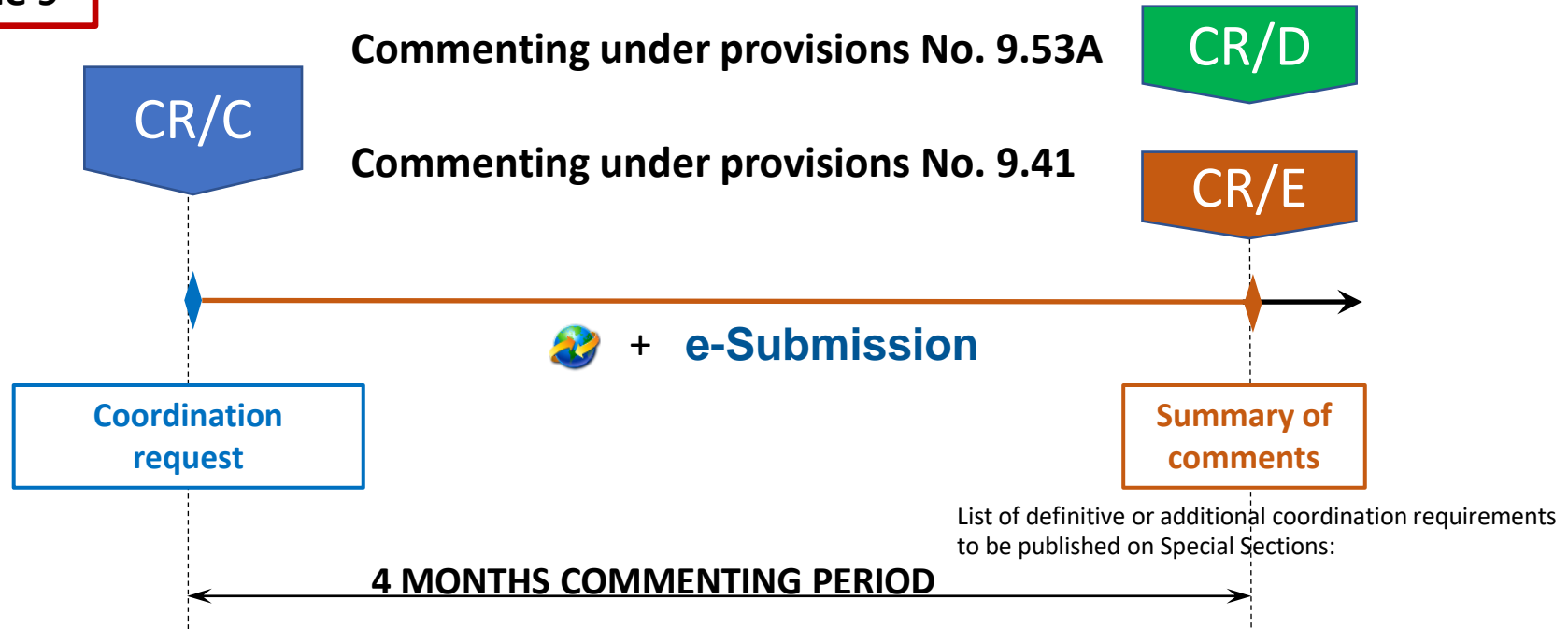
[www.itu.int/go/wrs-22](http://www.itu.int/go/wrs-22)

#ITUWRS



# Commenting on CR/C Special Sections

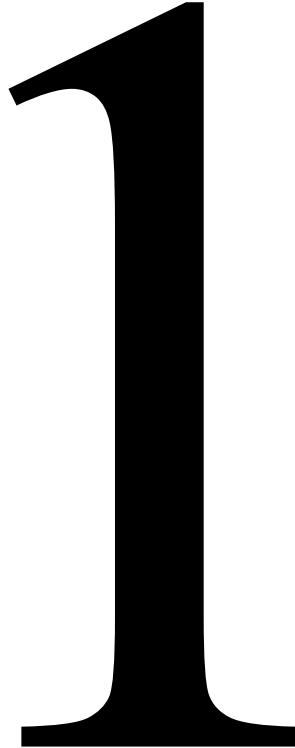
Section II of Article 9



and Commenting under provisions No. 23.13B/C

ITU website

# Commenting under provisions No. 9.53A



UNION INTERNATIONALE DES TÉLÉCOMMUNICATIONS BUREAU DES RADIOCOMMUNICATIONS INTERNATIONAL TELECOMMUNICATION UNION RADIOCOMMUNICATION BUREAU UNIÓN INTERNACIONAL DE TELECOMUNICACIONES OFICINA DE RADIOCOMUNICACIONES © I.T.U.

RÉSEAU À SATELLITE SATELLITE NETWORK RED DE SATELITE		IDRSS-NPB-240E	SECTION SPÉCIALE N° SPECIAL SECTION No. SECCIÓN ESPECIAL N.º	CR/D/4726
STATION TERRIENNE EARTH STATION ESTACIÓN TERRENA		---	BR IFIC / DATE BR IFIC / FECHA	2978 / 23.08.2022
ADM. RESPONSABLE RESPONSIBLE ADM. ADM. RESPONSABLE	IND	LONGITUDE NOMINALE NOMINAL LONGITUDE LONGITUD NOMINAL	120 W	NUMÉRO D'IDENTIFICATION IDENTIFICATION NUMBER NÚMERO DE IDENTIFICACIÓN
				121520164

9.11	1. La présente Section spéciale est publiée conformément au numéro 9.53A du Règlement des radiocommunications, et concerne la demande de coordination publiée dans la section spéciale CR/C indiquée au bas de cette page.	1. This Special Section is published in accordance with No. 9.53A of the Radio Regulations, in respect of the request for coordination published in the CR/C Special Section referenced at the bottom of this page.	1. Esta Sección Especial se publica de conformidad con lo dispuesto en el número 9.53A del Reglamento de Radiocomunicaciones, en lo que respecta a la solicitud de coordinación publicada en la Sección Especial CR/C cuya referencia se indica en el extremo de esta página.
X 9.11A			
9.12	2.* Les administrations qui ont soumis des observations au titre du numéro 9.52 dans le délai de quatre mois suivant la date de publication de la Section spéciale CR/C précitée, concernant le type de coordination indiqué par une croix (X) dans la case appropriée de la colonne de gauche, sont indiquées dans les Tableaux I et II ci-dessous.	2.* Administrations that have submitted comments under No. 9.52 within four months of the date of publication of the mentioned CR/C Special Section, with respect to the form of coordination indicated in the left-hand column by an X in the relevant box, are listed in Tables I and II below.	2.* En los Cuadros I y II que figuran a continuación se enumeran las administraciones que han presentado comentarios conforme al número 9.52 dentro de un plazo de cuatro meses a partir de la fecha de publicación de la Sección Especial CR/C mencionada, con respecto al tipo de coordinación indicado en la columna de la izquierda mediante una X en el casillero correspondiente.
9.12A			
X 9.13			
9.14	3.* Conformément au numéro 9.52C, toute administration autre que celles qui ont formulé des observations dans le délai réglementaire, sera réputée ne pas être affectée, et dans le cas de demande de coordination au titre des numéros 9.11 à 9.14 les dispositions des numéros 9.48 et 9.49 s'appliqueront.	3.* Pursuant to No. 9.52C, any administration other than those having submitted comments within the regulatory time-limit shall be regarded as unaffected, and in the case of coordination requests under Nos. 9.11 to 9.14 the provisions of Nos. 9.48 and 9.49 shall apply.	3.* Según lo dispuesto en el 9.52C, toda administración que no haya presentado comentarios en el plazo de tiempo reglamentario se considerará como no afectada, y a las peticiones de coordinación previstas en los números 9.11 a 9.14 se le aplicarán las disposiciones de los números 9.48 y 9.49.
9.21/A			
9.21/B	2.* et 3.* ne sont pas applicables, conformément au numéro 5.474A, aux bandes de fréquences 9 200 - 9 300 MHz et 9 900 - 10 400 MHz	2.* and 3.* are not applicable, in accordance with No. 5.474A, to the frequency bands 9 200 - 9 300 MHz and 9 900 - 10 400 MHz	De conformidad con lo dispuesto en el número 5.474A, 2.* y 3.* no son de aplicación a las bandas de frecuencias 9 200 - 9 300 MHz y 9 900 - 10 400 MHz
9.21/C			

RÉFÉRENCE DE LA SECTION SPÉCIALE (BR IFIC / DATE) SPECIAL SECTION REFERENCE (BR IFIC / DATE) REFERENCIA DE LA SECCIÓN ESPECIAL (BR IFIC / FECHA)	CR/C/5630 (BR IFIC 2965 / 22.02.2022)
--	---------------------------------------



# No 9.53A

the treatment by the Bureau of comments in respect of a coordination request under **Nos.9.11 to 9.14 and 9.21**

## No. 9.52

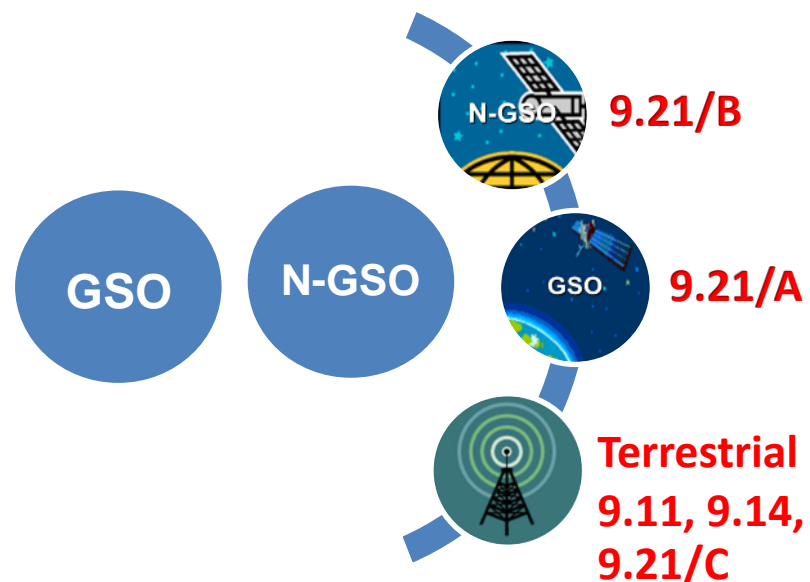
disagreements to be submitted by administrations within 4 months from the date of publication of the BR IFIC

## No. 9.52C

No disagreement within the 4 months period means agreement

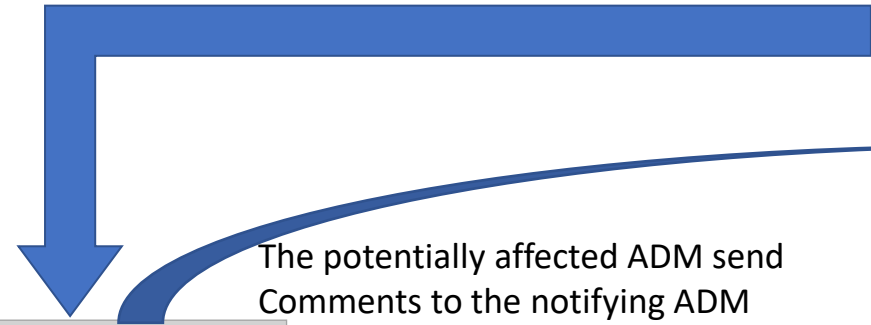
## CR/C publication for EPFD review

No comment is required under 9.11A if the date of protection remains unchanged





Publication of CRC in BR IFIC



The potentially affected ADM send Comments to the notifying ADM

SpaceCom  
Capture  
comments on  
published CR/C(s)

Each potentially affected ADM  
Commenting on a CR/C

Send copy of comments  
in mdb file (E-submission)



ITU

SpaceCom  
Analyse the receivability  
of comments, update SNS  
and creation of CR/D



Publication of CRD in BR IFIC

Receive comments  
From potentially  
Affected Adms

Notifying ADM responsible for  
a satellite network published in CR/C



UNION INTERNATIONALE DES TÉLÉCOMMUNICATIONS  
BUREAU DES RADIOCOMMUNICATIONS

INTERNATIONAL TELECOMMUNICATION UNION  
RADIOCOMMUNICATION BUREAU

UNIÓN INTERNACIONAL DE TELECOMUNICACIONES  
OFICINA DE RADIOCOMUNICACIONES

© I.T.U.

RÉSEAU À SATELLITE SATELLITE NETWORK RED DE SATÉLITE		<b>MONASAT-52EC</b>		SECTION SPÉCIALE N <sup>o</sup> SPECIAL SECTION No. SECCIÓN ESPECIAL N.º	<b>CR/D/4211</b>
STATION TERRIENNE EARTH STATION ESTACIÓN TERRENA		---		BR IFIC / DATE BR IFIC / DATE BR IFIC / FECHA	<b>2928 / 01.09.2020</b>
ADM. RESPONSABLE RESPONSIBLE ADM. ADM. RESPONSABLE	<b>MCO</b>	LONGITUDE NOMINALE NOMINAL LONGITUDE LONGITUD NOMINAL	<b>52 E</b>	NUMÉRO D'IDENTIFICATION IDENTIFICATION NUMBER NÚMERO DE IDENTIFICACIÓN	<b>119520255</b>

X	9.11	<p>1. La présente Section spéciale est publiée conformément au numéro 9.53A du Règlement des radiocommunications, et concerne la demande de coordination publiée dans la section spéciale CR/C indiquée au bas de cette page.</p> <p>2.* Les administrations qui ont soumis des observations au titre du numéro 9.52 dans le délai de quatre mois suivant la date de publication de la Section spéciale CR/C précitée, concernant le type de coordination indiqué par une croix (X) dans la case appropriée de la colonne de gauche, sont indiquées dans les Tableaux I et II ci-dessous.</p> <p>3.* Conformément au numéro 9.52C, toute administration autre que celles qui ont formulé des observations dans le délai réglementaire, sera réputée ne pas être affectée, et dans le cas de demande de coordination au titre des numéros 9.11 à 9.14 les dispositions des numéros 9.48 et 9.49 s'appliqueront.</p> <p>2.* et 3.* ne sont pas applicables, conformément au numéro 5.474A, aux bandes de fréquences 9 200 - 9 300 MHz et 9 900 - 10 400 MHz</p>	<p>1. This Special Section is published in accordance with No. 9.53A of the Radio Regulations, in respect of the request for coordination published in the CR/C Special Section referenced at the bottom of this page.</p> <p>2.* Administrations that have submitted comments under No. 9.52 within four months of the date of publication of the mentioned CR/C Special Section, with respect to the form of coordination indicated in the left-hand column by an X in the relevant box, are listed in Tables I and II below.</p> <p>3.* Pursuant to No. 9.52C, any administration other than those having submitted comments within the regulatory time-limit shall be regarded as unaffected, and in the case of coordination requests under Nos. 9.11 to 9.14 the provisions of Nos. 9.48 and 9.49 shall apply.</p> <p>2.* and 3.* are not applicable, in accordance with No. 5.474A, to the frequency bands 9 200 - 9 300 MHz and 9 900 - 10 400 MHz</p>	<p>1. Esta Sección Especial se publica de conformidad con lo dispuesto en el número 9.53A del Reglamento de Radiocomunicaciones, en lo que respecta a la solicitud de coordinación publicada en la Sección Especial CR/C cuya referencia se indica en el extremo de esta página.</p> <p>2.* En los Cuadros I y II que figuran a continuación se enumeran las administraciones que han presentado comentarios conforme al número 9.52 dentro de un plazo de cuatro meses a partir de la fecha de publicación de la Sección Especial CR/C mencionada, con respecto al tipo de coordinación indicado en la columna de la izquierda mediante una X en el casillero correspondiente.</p> <p>3.* Según lo dispuesto en el 9.52C, toda administración que no haya presentado comentarios en el plazo de tiempo reglamentario se considerará como no afectada, y a las peticiones de coordinación previstas en los números 9.11 a 9.14 se le aplicarán las disposiciones de los números 9.48 y 9.49.</p> <p>De conformidad con lo dispuesto en el número 5.474A, 2.* y 3.* no son de aplicación a las bandas de frecuencias 9 200 - 9 300 MHz y 9 900 - 10 400 MHz</p>
X	9.11A			
	9.12			
	9.12A			
X	9.13			
X	9.14			
X	9.21/A			
X	9.21/B			
X	9.21/C			
	RS33#2.1			

RÉFÉRENCE DE LA SECTION SPÉCIALE (BR IFIC / DATE)  
SPECIAL SECTION REFERENCE (BR IFIC / DATE)  
REFERENCIA DE LA SECCIÓN ESPECIAL (BR IFIC / FECHA)

**CR/C/5130 (BR IFIC 2917 / 31.03.2020)**



CRC

Tableau II / Table II / Cuadro II / 表二 / Таблица II / II الجدول				
Disposition / Provision / Disposición / 條款 / Положение / الحكم		Administrations susceptibles d'être défavorablement influencées (à titre d'information uniquement, voir numéro 9.36.1)	Potentially affected administrations (for information only, see No. 9.36.1)	Administraciones posiblemente afectadas (sólo para información, véase el N° 9.36.1)
		可能受影响的主管部门(仅供参考, 见第 9.36.1款)	Потенциально затрагиваемые администрации (исключительно для информации, см. п. 9.36.1)	إدارات يحتمل أن تتأثر سلباً غير موات (انظر الرقم 1.36.9، على سبيل الإطلاع فقط)
X	9.11	E, F, KGZ, POR, RUS, SVN, UAE		
X	9.11A			
	9.12			
	9.12A			
X	9.13	AUS, CAN, CHN, CYP, D/GLS, D, F/ESA, F/GLS, F, G, HOL, I/GLS, IND, ISR, J, LIE, LUX, NOR, NZL, PNG, RUS/IK, RUS, SLM, UAE, USA, VTN		
X	9.14	AFG, AFS/MRN, AFS, AGL, ALB, ALG, AND, ARM*, ARS*, AUS/CHR, AUS/HMD, AUS/ICO, AUS*, AUT*, AZE, BDI, BEL*, BEN, BFA, BGD, BHR*, BIH*, BLR, BOT, BRM, BRU, BTN, BUL, CAF, CBG, CHN/HKG*, CHN/MAC, CHN*, CLN*, CME, COD, COG, COM, CPV, CTI, CVA, CYP, CZE*, D*, DJI*, DNK/FRO, DNK*, E/CNR*, E*, EGY*, ERI*, EST, ETH, F/AMS, F/CRO, F/KER, F/MYT, F/REU*, F*, FIN*, G/ASC, G/DGA, G/GCA, G/GIB*, G/SHN, G/TRC, G*, GAB, GEO, GHA, GMB, GNB*, GNE, GRC*, GUI, HNG*, HOL*, HRV*, I*, IND*, INS*, IRL*, IRN*, IRQ, ISL, ISR*, J*, JOR*, KAZ, KEN, KGZ*, KOR*, KRE, KWT*, LAO, LBN, LBR, LBY, LIE, LSO, LTU*, LUX, LVA*, MAU/ROD, MAU, MDA*, MDG, MKD*, MLA, MLD, MLI, MLT*, MNE*, MNG*, MOZ, MRC*, MTN, MWI, NGR, NIG*, NMB, NOR/BVT, NOR*, NPL, OMA*, PAK*, PHL*, PLW, POL, POR/AZR, POR/MDR, POR*, QAT*, ROU*, RRW, RUS*, S*, SDN, SEN*, SEY, SMR, SNG, SOM, SRB*, SRL, SSD, STP, SUI/AUT*, SUI/I*, SUI*, SVK*, SVN*, SWZ, SYR*, TCD, TGO, THA, TJK, TKM*, TLS, TUN, TUR*, TZA, UAE*, UGA, UKR*, USA/D*, UZB*, VTN, XZZ/AOE*, XZZ/XBY, XZZ/XGZ, XZZ/XSP, XZZ/XWB, YEM*, ZMB, ZWE		
X	9.21/A <sup>1</sup>	ARS/ARB, AUS, AZE, B, BEL, BLR, CHN, CLM, CYP, D, E, EGY, ETH, F, G, HOL, I, IND, INS, ISR, J, KOR, LUX, MLA, MLD, NOR, PAK, PNG, QAT, RUS/IK, RUS, S, THA, TUR, UAE, UKR, USA		
X	9.21/B <sup>1</sup>	CAN, CHN, CYP, D, F, HOL, LUX, NOR, PNG, RUS, SLM, USA		
X	9.21/C <sup>1</sup>	ARM, ARS, AUS, AZE, BEL, BLR, CHN, CZE, D, E/CNR, E, F, G, GRC, HNG, HRV, I, INS, IRL, IRN, J, KAZ, KGZ, KOR, KRE, LAO, LTU, MDA, MLA, MRC, OMA, POR, RUS, S, SEN, SNG, SVK, SVN, SYR, UAE, UKR, UZB		
	RS33#2.1			

Tableau I / Table I / Cuadro I / 表一 / Таблица I / I الجدول

CRD

Disposition / Provision / Disposición / 條款 / Положение / الحكم		Récapitulatif des coordinations à effectuer	Summary of coordination requirements	Resumen de los requisitos de coordinación
		协调要求概述	Сводные данные о будущей координации	ملخص متطلبات التنسيق
X	9.11	E, EGY, F, J, KGZ, MRC, POR, UAE		
X	9.11A			
	9.12			
	9.12A			
X	9.13	AUS, CAN, CHN, CYP, D/GLS, D, F/GLS, F, G, HOL, I/GLS, IND, ISR, LIE, NOR, NZL, PNG, RUS/IK, RUS, SLM, UAE, USA, VTN		
X	9.14	ALG, ARM, ARS, AUS/CHR, AUS/HMD, AUS/ICO, AUS, AZE, BUL, CHN/HKG, CHN/MAC, CHN, CTI, CYP, CZE, D, E/CNR, E, EGY, F/AMS, F/CRO, F/KER, F/MYT, F/REU, F, FIN, G/ASC, G/DGA, G/GCA, G/GIB, G/SHN, G/TRC, G, GAB, GRC, HNG, HOL, HRV, I, IND, INS, IRN, IRQ, ISR, J, KAZ, KGZ, KOR, LTU, MLA, MLT, MRC, OMA, PAK, POR/AZR, POR/MDR, POR, QAT, ROU, RRW, RUS, S, SDN, SNG, SUI/AUT, SUI/I, SUI, SYR, TUN, TUR, UAE, UKR, USA/D, UZB, VTN		
X	9.21A	ARS/ARB, AUS, AZE, B, CHN, CYP, D, E, EGY, F, HOL, IND, INS, ISR, KOR, LUX, MLA, PAK, PNG, QAT, RUS/IK, RUS, S, THA, TUR, UAE, UKR, USA		
X	9.21B	CAN, CHN, CYP, D, F, HOL, PNG, RUS, SLM, USA		
X	9.21C	ARM, ARS, AUS, AZE, BLR, CHN, D, E/CNR, E, EGY, F, G, GRC, HRV, I, INS, IRN, KAZ, KGZ, KOR, MLA, MRC, OMA, S, SNG, UAE, UKR, UZB		
	RS33#2.1			

contains list of administrations having submitted their disagreement (No.9.53A)



Final List of coordination requirements published in CR/D



**9.36 b)** identify in accordance with No. **9.27** any administration with which coordination may need to be effected<sup>21, 22</sup>;

<sup>21</sup> **9.36.1** In the case of coordination under Nos. **9.12, 9.12A** and **9.13**, the Bureau shall also identify the satellite networks or systems with which coordination may need to be effected. The list of administrations identified by the Bureau under Nos. **9.11 to 9.14** and **9.21** and the list of satellite networks or systems identified by the Bureau under Nos. **9.12, 9.12A** and **9.13** are only for information purposes, to help administrations comply with this procedure. (**WRC-19**)

**9.53A** Upon expiry of the deadline for comments in respect of a coordination request under Nos. **9.11 to 9.14** and **9.21**, the Bureau shall, according to its records, publish a Special Section, indicating **the list of administrations** having submitted their disagreement and **the list of satellite networks** or systems upon which this disagreement is based, as appropriate, or other comments within the regulatory deadline. (**WRC-19**)



Tableau III / Table III / Cuadro III / 表 III / Таблица III / III الجدول

III-I Besoins de coordination (réseaux à satellite ou systèmes à satellites) au titre du numéro 9.12  
III-I. 按照第9.12款的协调要求 (卫星网络或系统)

III-I. Coordination requirements (satellite networks or systems) under 9.12  
III-I Требования по координации (спутниковые сети или системы) согласно п. 9.12

III-I Requisitos de coordinación (redes o sistemas de satélites) con arreglo al 9.12  
III-I متطلبات التنسيق (الشبكات أو الأنظمة الساتلية) بموجب الرقم 9.12

12.9

A1f1 Notif. adm.	A1f3 Inter. sat. org.	A1a Sat. Network	A4a1 Orbital long.	BR3b Category of notif.	BR25 A/T	BR6a Id. no.
CAN		102		C	A	115520231
		CANPLEIADES		C	A	121520048
		CANPOL-2		C	A	113520282
		CANPOL-2		N	T	120500079
		CANPOL-2		C	T	320520271
		CANPOL-3		C	A	117520106
		CANSAT-LEO		C	A	116520421
		CANSAT-LEO-V		N	A	119500304
		COMMSTELLATION		C	A	112520490
		COMMSTELLATION		N	T	118500298
		COMMSTELLATION		C	T	319520405
		HOTH		C	A	120520102
		TELSTAR-LEO		C	A	119520219
		TELSTAR-LEO		C	T	319520417
		TELSTAR-LEO-V-1		C	A	119520350
		VGEO-1		C	A	118520056

III-III Besoins de coordination (réseaux à satellite ou systèmes à satellites) au titre du numéro 9.13  
III-III. 按照第9.13款的协调要求 (卫星网络或系统)

III-III. Coordination requirements (satellite networks or systems) under 9.13  
III-III Требования по координации (спутниковые сети или системы) согласно п. 9.13

III-III Requisitos de coordinación (redes o sistemas de satélites) con arreglo al 9.13  
III-III متطلبات التنسيق (الشبكات أو الأنظمة الساتلية) بموجب الرقم 9.13

13.9

A1f1 Notif. adm.	A1f3 Inter. sat. org.	A1a Sat. Network	A4a1 Orbital long.	BR3b Category of notif.	BR25 A/T	BR6a Id. no.		
CAN		102		C	A	115520231		
		CANPLEIADES		C	A	121520048		
		CANPOL-2		C	A	113520282		
		CANPOL-2		N	T	120500079		
		CANPOL-3		C	A	117520106		
		CANSAT-LEO		C	A	116520421		
		COMMSTELLATION		C	A	112520490		
		COMMSTELLATION		N	T	118500298		
		COMMSTELLATION		C	T	319520405		
		HOTH		C	A	120520102		
		TELSTAR-LEO		C	A	119520219		
		TELSTAR-LEO-2		C	T	121520147		
		CHN		ACONNECT		C	A	117520339
				ACONNECT-B		C	A	119520033
				ACONNECT-T		C	A	117520340
				C-SAT-LEO		C	A	119520048
				DMT-SY		C	A	120520143

aux à satellite au III-II. Coordination requirements (satellite networks) under 9.12 A  
星网络) III-II Требования по координации (спутниковые сети) согласно п. 9.12A

III-II Requisitos de coordinación (redes de satélites) con arreglo al 9.12A  
III-II متطلبات التنسيق (الشبكات الساتلية) بموجب الرقم 9.12A

sat.	A1a Sat. Network	A4a1 Orbital long.	BR3b Category of notif.	BR25 A/T	BR6a Id. no.	
A	ALCOMSAT-24.8W	24.8 W	C	A	113520121	
	ALCOMSAT-24.8W	24.8 W	N	A	120500103	
	ARSAT-D	81 W	C	A	113520066	
	ARSAT-M	81 W	C	A	117520224	
	ARSAT-N	81 W	C	A	119520367	
	ARSAT-O	72 W	C	A	120520234	
	B	ARABSAT 5A-30.5E	30.5 E	N	A	110500040
		ARABSAT 5B-26E	26 E	N	A	111500061
		ARABSAT 5C-20E	20 E	N	A	111500210
		ARABSAT 6E-34.5E	34.5 E	N	A	111500139
ARABSAT 7A-30.5E		30.5 E	C	A	109520112	
ARABSAT 7A-30.5E		30.5 E	N	A	118500054	
ARABSAT 7B-26E		26 E	C	A	109520113	
ARABSAT 7B-26E		26 E	N	A	116500189	

# Commenting under provisions No. 9.41



UNION INTERNATIONALE DES TÉLÉCOMMUNICATIONS  
BUREAU DES RADIOCOMMUNICATIONS

INTERNATIONAL TELECOMMUNICATION UNION  
RADIOCOMMUNICATION BUREAU

UNIÓN INTERNACIONAL DE TELECOMUNICACIONES  
OFICINA DE RADIOCOMUNICACIONES

© I.T.U.

RÉSEAU À SATELLITE SATELLITE NETWORK RED DE SATELITE	<b>ODYSSEY-97W</b>		SECTION SPÉCIALE N° SPECIAL SECTION No. SECCIÓN ESPECIAL N.º	<b>CR/E/2484</b>
STATION TERRIENNE EARTH STATION ESTACIÓN TERRENA	---		BR IFIC / DATE BR IFIC / DATE BR IFIC / FECHA	<b>2980 / 20.09.2022</b>
ADM. RESPONSABLE RESPONSIBLE ADM. ADM. RESPONSABLE	<b>D</b>	LONGITUDE NOMINALE NOMINAL LONGITUDE LONGITUD NOMINAL	<b>97 W</b>	NUMÉRO D'IDENTIFICATION IDENTIFICATION NUMBER NÚMERO DE IDENTIFICACIÓN
				<b>121520191</b>

X	9.41/9.7	1. La présente Section spéciale est publiée conformément au numéro 9.42 du Règlement des radiocommunications, en ce qui concerne la demande de coordination publiée dans la Section spéciale CR/C citée en référence au bas de cette page.	1. This Special Section is published in accordance with No. 9.42 of the Radio Regulations, in respect of the request for coordination published in the CR/C Special Section referenced at the bottom of this page.	1. Esta Sección Especial se publica de conformidad con el número 9.42 del Reglamento de Radiocomunicaciones al respecto de la solicitud de coordinación publicada en la Sección Especial CR/C indicada al final de esta página.
	9.41/9.7A	2. Les administrations qui ont soumis des observations au titre du numéro 9.41 dans les quatre mois qui ont suivi la publication des Sections spéciales susmentionnées, en ce qui concerne la forme de la coordination indiquée dans la colonne de gauche par un X dans la case appropriée, sont énumérées dans le Tableau 1 ci après.	2. Administrations that have submitted comments under No. 9.41 within four months of the date of publication of the mentioned CR/C Special Sections, with respect to the form of coordination indicated in the left-hand column by an X in the relevant box, are listed in Table-1, below.	2. Las Administraciones que han presentado comentarios con arreglo al número 9.41 en el plazo de cuatro meses a partir de la fecha de publicación de la mencionada Sección Especial CR/C, con respecto al formulario de coordinación indicado en la columna izquierda introduciendo una X en la casilla correspondiente, se indican en el Cuadro-1, que aparece más adelante.
	9.41/9.7B			

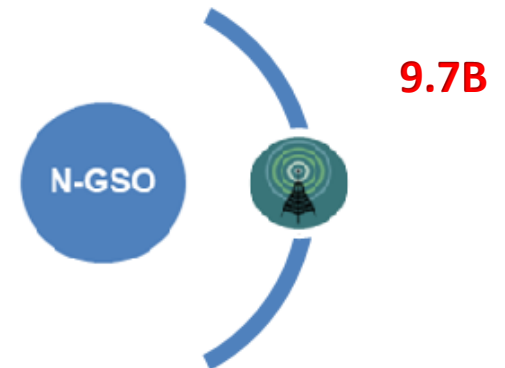
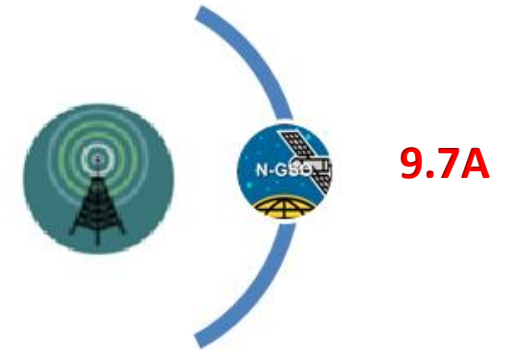
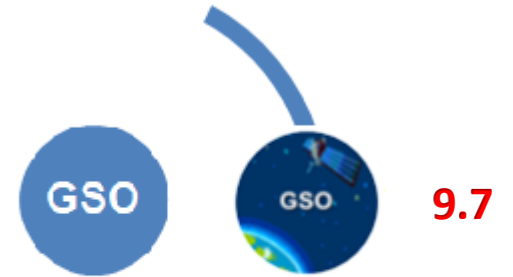
RÉFÉRENCE DE LA SECTION SPÉCIALE (BR IFIC / DATE) SPECIAL SECTION REFERENCE (BR IFIC / DATE) REFERENCIA DE LA SECCIÓN ESPECIAL (BR IFIC / FECHA)	<b>CR/C/5650 (BR IFIC 2968 / 05.04.2022)</b>
--	--

# No 9.41

the treatment by the Bureau of comments in respect of a coordination request under **Nos. 9.7, 9.7A and 9.7B**

## No. 9.43

No request within the 4 months period means agreement



## Inclusion/Exclusion under No.9.7:

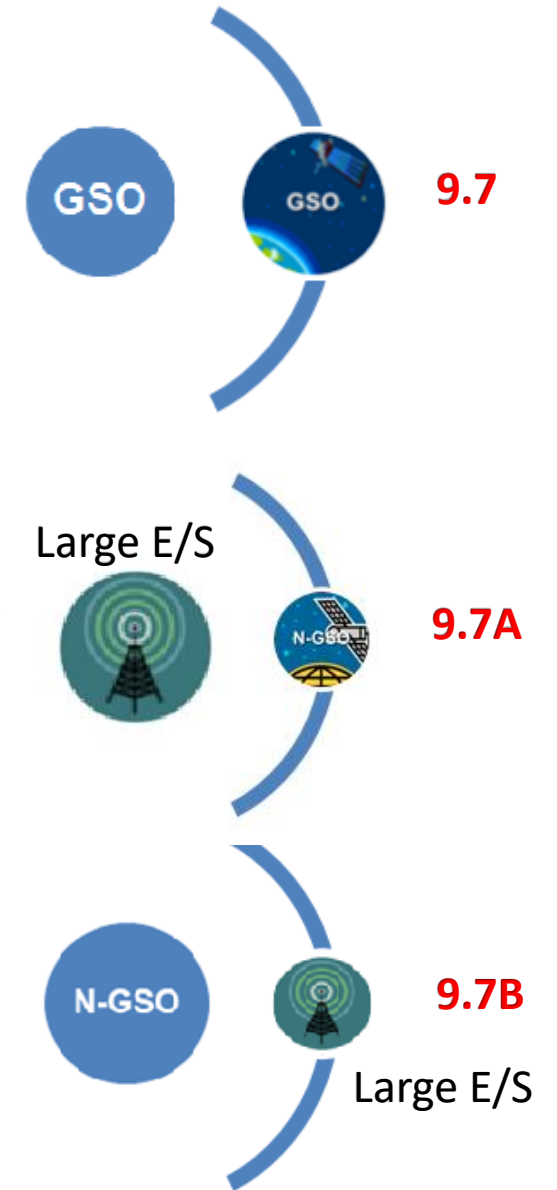
- applicable in the frequency bands where coordination arc is applied
- $\Delta T/T > 6\%$  criterion (method in Appendix 8)
- Allows inclusion of the networks located beyond coordination arc
- RoP : A **sample of  $\Delta T/T > 6\%$  (one pair of assignments)** for incoming and existing assignments **shall be provided to the Bureau** (e.g. **AP8\_RESULTS.MDB** or **AP8\_RESULTS.rtf** generated with GIBC/AP8 or other calculations showing  $\Delta T/T > 6\%$ )

In exceptional cases of the potential mistake in CR/C publication, if administration finds that any of its satellite networks not identified under No.9.36.2 by the Bureau using  $\Delta T/T$  criteria, should have been included in the CR/C, it may still request its inclusion under No. 9.41.

## Inclusion / Exclusion under No. 9.7A and 9.7B:

Addition/exclusion under No. 9.41 is based on:

- Before only using frequency overlap
- With EPFD Validation Software, would include verification of Equivalent Power Flux Densities levels produced by Non-GSOs



# Appendix 8 software helps to provide example of dT/T calculation for submission under No. 9.41

GIBC SNS V9 - Graphical Interface for Batch Calculations

Power Control	Tools / Options	PFD NGSO
PFD (terrestrial serv.)	PFD (space serv.)	Appendix 7
Appendix 30B	Appendix 30 30A	EPFD
		Appendix 8

Network:  Start Cancel

9.41 Examination Outside of the Coordination Arc  
(Please enter Adm/NetworkOrg below)

Filtering Existing Networks

Network:  Adm:

Year - Month - Date:    Network Org:

Message:

It is required to specify the administration and/or international organization

## Reporting and Review results tools

Ap8Results 1.0.0.0

Administration	Satellite name	Date of receipt	Status	Notification reason	Nominal longitude
F	F-SAT-N8-139W	11/23/2019	50	C	-139

Incoming Id	Existing Id	Finished Ok	Production	User name	Started at	Finished at	Run time
119520323	119520094	Y	N	karina	11/3/2020 3:22:54 PM	11/3/2020 3:23:05 PM	11s

**Affected Administrations**

Drag a column header here to group by that column

Inc grp id	Coord prov	Agree st
119791217	9.41	T
119791171	9.41	T
119791172	9.41	T
119791173	9.41	T
119791174	9.41	T
119791175	9.41	T
119791086	9.41	T
119791087	9.41	T
119791088	9.41	T
119791089	9.41	T
119791090	9.41	T
119791091	9.41	T
119791092	9.41	T
Total: 536		

Print MS Excel Text Image Save Layout My Layout

### Affected Networks

Drag a column header here to group by that column

Inc ntc id	Coord prov	Agree st	Aff ntc id	Satellite name	Adm/Ntwk org	Nominal longitu...	Notification reas...	Status aff	C/R
119520323	9.41	T	119520094	ADF 104E IOR	AUS	104	C	50	C/R



Publication of CRC in BR IFIC



SpaceCom  
Capture  
comments on  
published CR/C(s)

Each potentially affected ADM  
Commenting on a CR/C

Send copy of comments  
in mdb file (E-Submission)



SpaceCom  
Analyse the  
receivability of  
comments,  
update SNS and  
creation of CR/E



Publication of CRE in BR IFIC

Send copy of comments  
in mdb file (E-Submission)



SpaceCom  
Capture  
comments on  
published CR/C(s)

Notifying ADM responsible for  
a satellite network published in CR/C





UNION INTERNATIONALE DES TÉLÉCOMMUNICATIONS  
BUREAU DES RADIOCOMMUNICATIONS

INTERNATIONAL TELECOMMUNICATION UNION  
RADIOCOMMUNICATION BUREAU

UNIÓN INTERNACIONAL DE TELECOMUNICACIONES  
OFICINA DE RADIOCOMUNICACIONES

© I.T.U.

RÉSEAU À SATELLITE SATELLITE NETWORK RED DE SATÉLITE		<b>MONASAT-52EC</b>		SECTION SPÉCIALE N <sup>o</sup> SPECIAL SECTION No. SECCIÓN ESPECIAL N.º	<b>CR/E/2107</b>
STATION TERRIENNE EARTH STATION ESTACIÓN TERRENA		---		BR IFIC / DATE BR IFIC / DATE BR IFIC / FECHA	<b>2931 / 13.10.2020</b>
ADM. RESPONSABLE RESPONSIBLE ADM. ADM. RESPONSABLE	<b>MCO</b>	LONGITUDE NOMINALE NOMINAL LONGITUDE LONGITUD NOMINAL	<b>52 E</b>	NUMÉRO D'IDENTIFICATION IDENTIFICATION NUMBER NÚMERO DE IDENTIFICACIÓN	<b>119520255</b>

X	9.41/9.7	1. La présente Section spéciale est publiée conformément au numéro <b>9.42</b> du Règlement des radiocommunications, en ce qui concerne la demande de coordination publiée dans la Section spéciale CR/C citée en référence au bas de cette page.	1. This Special Section is published in accordance with No. <b>9.42</b> of the Radio Regulations, in respect of the request for coordination published in the CR/C Special Section referenced at the bottom of this page.	1. Esta Sección Especial se publica de conformidad con el número 9.42 del Reglamento de Radiocomunicaciones al respecto de la solicitud de coordinación publicada en la Sección Especial CR/C indicada al final de esta página.
	9.41/9.7A	2. Les administrations qui ont soumis des observations au titre du numéro <b>9.41</b> dans les quatre mois qui ont suivi la publication des Sections spéciales susmentionnées, en ce qui concerne la forme de la coordination indiquée dans la colonne de gauche par un X dans la case appropriée, sont énumérées dans le Tableau 1 ci après.	2. Administrations that have submitted comments under No. <b>9.41</b> within four months of the date of publication of the mentioned CR/C Special Sections, with respect to the form of coordination indicated in the left-hand column by an X in the relevant box, are listed in Table-1, below.	2. Las Administraciones que han presentado comentarios con arreglo al número 9.41 en el plazo de cuatro meses a partir de la fecha de publicación de la mencionada Sección Especial CR/C, con respecto al formulario de coordinación indicado en la columna izquierda introduciendo una X en la casilla correspondiente, se indican en el Cuadro-1, que aparece más adelante.
	9.41/9.7B			

RÉFÉRENCE DE LA SECTION SPÉCIALE (BR IFIC / DATE) SPECIAL SECTION REFERENCE (BR IFIC / DATE) REFERENCIA DE LA SECCIÓN ESPECIAL (BR IFIC / FECHA)	<b>CR/C/5130 (BR IFIC 2917 / 31.03.2020)</b>
--	--

CRC

Tableau I / Table I / Cuadro I / 表一 / Таблица I / الجدول I			
Disposition / Provision / Disposición / 條款 / Положение / الحكم	Résumé des conditions régissant la coordination	Summary of coordination requirements	Resumen de los requisitos de coordinación
	协调要求概述	Сводные потребности в координации	موجز متطلبات التنسيق
X 9.7	ALG, ARG, ARM, ARS/ARB, ARS, AUS, AZE, B, BEL, BLR, BOL, BUL, CAN, CBG, CHN, CLM, CYP, CZE, D/EUM, D, E, EGY, ETH, F/EUT, F, G, GRC, HOL, I, IND, INS, IRN, ISR, J, JOR, KAZ, KOR, LAO, LUX, MEX, MLA, MLD, MNG, NCG, NIG, NOR, NPL, OMA, PAK, PNG, QAT, RUS/IK, RUS, S, SUI, THA, TUR, UAE, UKR, USA, VTN		

CRE

contains list of administrations/ satellite networks, requested and confirmed by the Bureau for inclusion (No.9.42)

Disposition / Provision / Disposición / 條款 / Положение / الحكم	Administrations incluses dans le processus de coordination.	Administration included in the coordination process	Administraciones incluidas en el procedimiento de coordinación
	协调过程中包括的主管部门	Администрации, включенные в процесс координации	الإدارات التي تشملها عملية التنسيق
X 9.41 / 9.7	BUL, EGY, J, KOR, OMA, PAK, RUS, UAE		
	9.41 / 9.7A		
	9.41 / 9.7B		

A1f1 Notif. adm.	A1f3 Inter. sat. org.	A1a Sat. Network	A4a1 Orbital long.	BR3b Category of notif.	BR25 A/T	BR6a Id. no.	BR26 Causing interference	BR27 Receiving interference
BUL		BUL-QV-1.9E	1.9 E	C	A	117520484		R
		BULSAT-1.9E	1.9 E	C	A	112520195		R
EGY		EGJAN1A	7 W	C	A	114520032	C	R
		EGY-N-SAT	7 W	C	A	116520263	C	R
		EGYCOMM0A	35.5 E	C	A	109520318	C	R
		EGYCOMM0A	35.5 E	N	A	118500131	C	R
		EGYCOMM2A	2 E	C	A	116520436	C	R
		EGYCOMM3A	6 E	C	A	116520437	C	R
		EGYCOMM5A	18 E	C	A	116520438	C	R
		EGYCOMM8A	35.5 E	C	A	116520230	C	R
J		NBSAT-21AX	110 E	C	A	115520051		R
		NBSAT-21BX	109.85 E	C	A	115520052		R
		NBSAT-21CX	109.65 E	C	A	115520053		R
KOR		COMS-128.2E	128.2 E	N	A	110500112	C	R
		GEO-KOMPSAT-2-128.2E	128.2 E	C	A	115520089	C	R
		INFOSAT-B	113 E	A	A	108500797	C	R
		INFOSAT-C	116 E	N	A	99500246	C	R
		KOREASAT-1	116 E	N	A	95500170	C	R
		KOREASAT-113E	113 E	N	A	106500308	C	R
		KOREASAT-113K	113 E	C	A	111520381	C	R
		KOREASAT-113K	113 E	N	A	118500282	C	R
		KOREASAT-116	116 E	C	A	114520131	C	R
		KOREASAT-116.0E	116 E	C	A	110520358	C	R
		KOREASAT-116.0E	116 E	N	A	119500180	C	R
		KOREASAT-116A	116 E	C	A	116520403	C	R
		KOREASAT-116K	116 E	C	A	111520382	C	R
		KOREASAT-116K	116 E	N	A	118500020		R
		KOREASAT-128.2E	128.2 E	C	A	118520087	C	R
		KOREASAT-2	113 E	N	A	95500171	C	R
		KOREASAT-93E-MT2	93 E	C	A	118520263	C	R
		KOREASAT-97E-MT2	97 E	C	A	115520212	C	R
		KTSAT-113E	113 E	C	A	117520012	C	R

CR/E/2107



Final List of coordination requirements (Administrations and networks) published in CR/E + CR/C



# Comments relating to the exclusion of the territory of a country from the service area of a space station

## Nos.23.13B and 23.13C

- If an Administration is objecting for inclusion of its territory in the service area of a space station
- Only applicable to assignments in the Broadcasting-Satellite Service (except sound broadcasting)

Published in <https://www.itu.int/net/ITU-R/space/snl/list2313/list2313nplan.asp>

Non-Planned band satellite networks - Broadcasting Satellite Service, service area exclusion requests under RR 23.13 - Last update: BR IFIC 2932 of 27/10/2020

Your query : / Type = gso or ngso

[Complete list](#) - [Explanations](#) - [Export in txt format](#) - [Export in Excel format](#)

Go to page : [1](#) [2](#) [3](#) [4](#) [5](#) [6](#) [7](#) [8](#) [9](#) [10](#) [11](#) [12](#) [13](#) [14](#) [15](#) [16](#) [17](#) [18](#) [19](#) [20](#) [21](#) [22](#) [23](#) [24](#) [25](#) [26](#)

Notice ID	Satellite Name	adm	ntwk_org	long_nom	ssn_ref	ssn_no	Part/ Art.	ssn rev	ssn rev no	BR IFIC No	BR IFIC date	Administration requesting exclusion from	Date of receipt of	< 4 months	Remarks
-----------	----------------	-----	----------	----------	---------	--------	------------	---------	------------	------------	--------------	--	--------------------	------------	---------

Notice ID (SNS)	Satellite Name (SNL Part B)	adm	ntwk_org	long_nom	ssn_ref	ssn_no	Part/ Art.	ssn rev	ssn rev no	BR IFIC No	BR IFIC date	Administration requesting exclusion from service area	Date of receipt of the request	< 4 months	Remarks
<a href="#">up</a> <a href="#">down</a>	<a href="#">up</a> <a href="#">down</a>	<a href="#">up</a> <a href="#">down</a>	<a href="#">up</a> <a href="#">down</a>	<a href="#">up</a> <a href="#">down</a>	<a href="#">up</a> <a href="#">down</a>	<a href="#">up</a> <a href="#">down</a>				<a href="#">up</a> <a href="#">down</a>		<a href="#">up</a> <a href="#">down</a>	<a href="#">up</a> <a href="#">down</a>	<a href="#">up</a> <a href="#">down</a>	<a href="#">up</a> <a href="#">down</a>
<a href="#">119520137</a>	TURKSAT-42E-G	TUR		42	CR/C	5042		M	1	2917	31.03.2020	UAE	20.07.2020	yes	
<a href="#">115520019</a>	PACIFISAT-116.1E	PNG		116.1	CR/C	3746				2800	04.08.2015	SNG	15.06.2020	no	
<a href="#">319520136</a>	PAKSAT-MM1-38.2E-KA	PAK		38.2	CR/C	4441		M	3	2908	12.11.2019	INS	22.01.2020	yes	
<a href="#">319520038</a>	ENSAT-14.5E-A	RUS		14.5	CR/C	4480		M	1	2897	11.06.2019	CHN	18.10.2019	yes	
<a href="#">319520037</a>	ENSAT-12.8E	RUS		12.8	CR/C	3871		M	1	2897	11.06.2019	IRN	06.10.2019	yes	
<a href="#">319520038</a>	ENSAT-14.5E-A	RUS		14.5	CR/C	4480		M	1	2897	11.06.2019	IRN	06.10.2019	yes	



# Provisions 9.11 at 1467 – 1492 MHz

Resolution 761 (WRC-19)

Different regions, different administrations,  
different applicability of provision under No. 9.11

SpaceCom  
File Options Help

Aff. ADM

Comment  
Import  
Validate/Send

Potentially affected Administration's comments under No. 9.52

CR/C information

Provision	Special Section	Adm./ntwk. org.	Satellite network	Orb. pos.
9.11	CR/C/5279	LUX	LUX-G14-8	28.20

1. Select the Form of coordination to comment

Form of coordination	Coordination from	Coordination with respect to	Identified	Last update	Comments completed
9.11	SS	TS			<input type="checkbox"/>
9.13	GSD	NGSD			<input type="checkbox"/>
9.14	SS	TS	EGY		<input type="checkbox"/>
9.21/A	SS	GSD	EGY		<input type="checkbox"/>
9.21/B	SS	NGSD			<input type="checkbox"/>
9.21/C	GSD/NGSD	TS			<input type="checkbox"/>

2. Enter your comments on groups by clicking the relevant check box in column 'Confirm/Add/Remove'  
If you do not click, it means that you do not wish to be included in coordination process

Beam	Emi./Rcp.	Group	Freq. min. (MHz)	Freq. max. (MHz)	Identified by BR or added by affected Adm.	Confirm / Add / Remove	Administration comments
TA2R	E	120624242	17300.000	17800.000	*	<input type="checkbox"/>	<- *Check to add aff. Adm.
TL1R		120624270	1467.000	1492.000	*	<input type="checkbox"/>	<- *Check to add aff. Adm.
		120624271			*	<input type="checkbox"/>	<- *Check to add aff. Adm.

## Confirm your addition in coordination

If your Administration's territory is in Region 1 except those listed in 5.342, please note that PFD hard limits are applicable and your request is not receivable (see No.9.6.3 of RR).

If your Administration's territory is in Region 2 or listed in No. 5.342 and if the territory of your administration is visible from the satellite. Please note that if your Administration's territory is not visible, your request is not receivable.

If your Administration's territory is in Region 3 or listed in No. 5.346 and use frequency assignments with the nature of service 'IM' and PFD threshold in resolves 5 of Res.761 (REV.WRC-19) is exceeded. Please note that if your Administration's territory is not visible or the PFD threshold is not exceeded in the territory, your request is not receivable

Click 'Add' button to add your Administration's territory to the coordination process

Geographical area

EGY

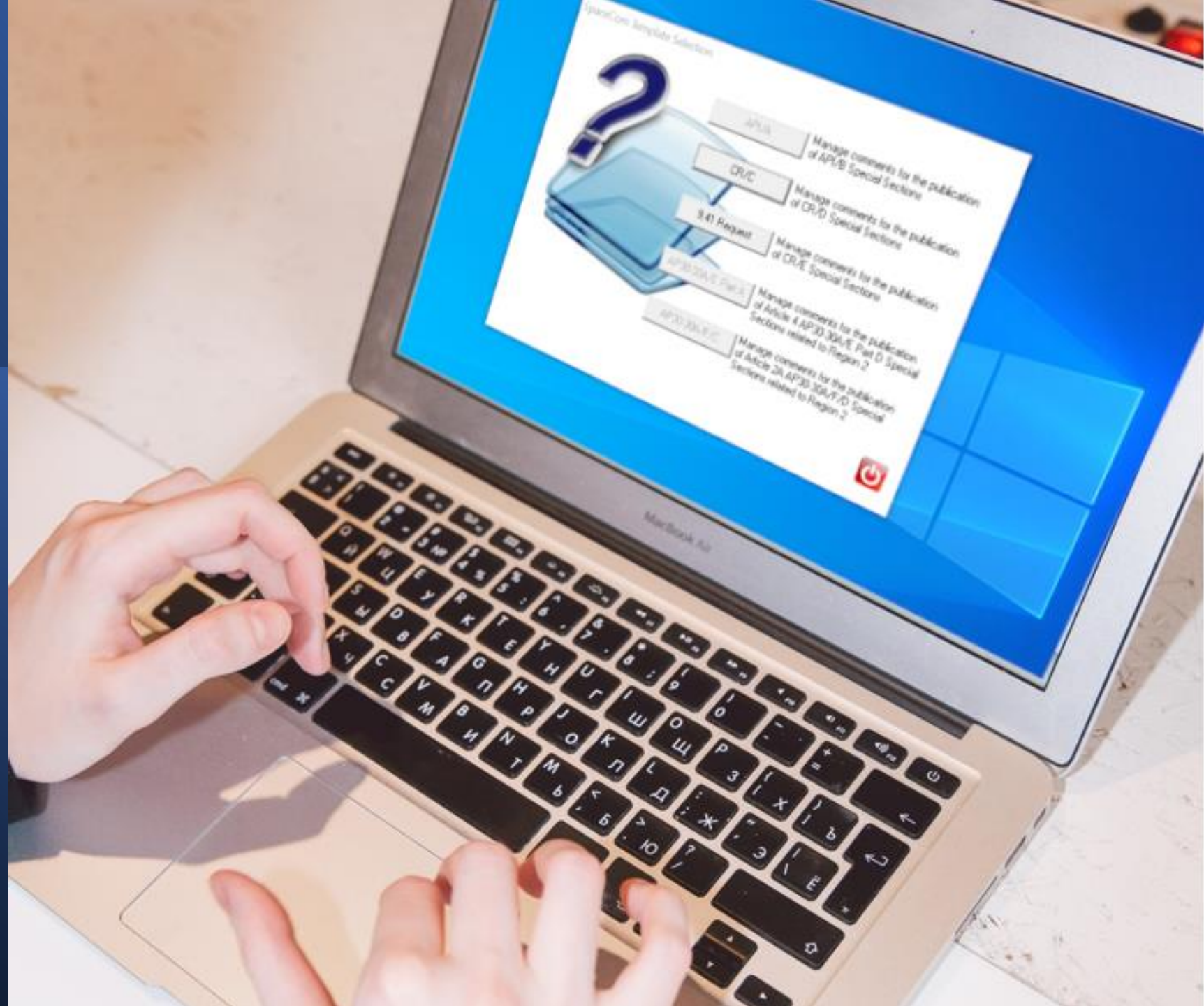
Add to the current group only  Add to all filtered groups except those having a remark

Add

Cancel

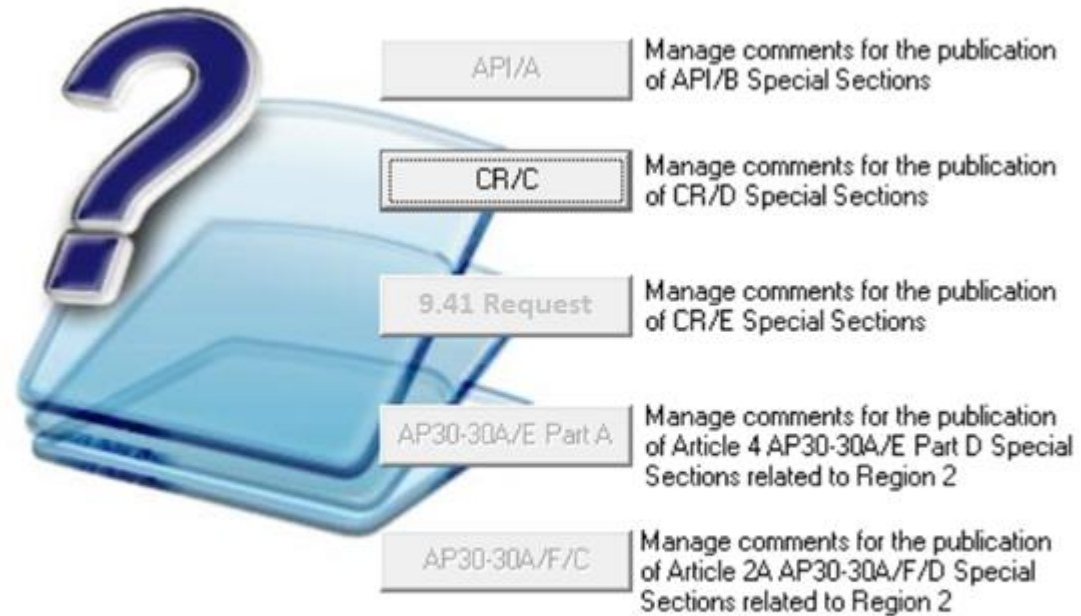


# Exercise Commenting CR/C using SpaceCom



# 1

## Commenting under provisions No. 9.53A





# Exercise: Potentially affected Administration CAN comments on BR IFIC 2979



TUWK  
GENEVA 2022

UNION INTERNATIONALE DES TÉLÉCOMMUNICATIONS BUREAU DES RADIOCOMMUNICATIONS		INTERNATIONAL TELECOMMUNICATION UNION RADIOCOMMUNICATION BUREAU		UNIÓN INTERNACIONAL DE TELECOMUNICACIONES OFICINA DE RADIOCOMUNICACIONES		© I.T.U.			
RÉSEAU À SATELLITE SATELLITE NETWORK RED DE SATELITE		F-SAT-N10-113W		SECTION SPÉCIALE N° SPECIAL SECTION No. SECCIÓN ESPECIAL N.º		CR/C/5720			
STATION TERRIENNE EARTH STATION ESTACIÓN TERRENA		---		BR IFIC / DATE BR IFIC / DATE BR IFIC / FECHA		2979 / 06.09.2022			
ADM. RESPONSABLE RESPONSABLE ADM. ADM. RESPONSABLE		F		LONGITUDE NOMINALE NOMINAL LONGITUDE LONGITUD NOMINAL		113 W			
				NUMÉRO D'IDENTIFICATION IDENTIFICATION NUMBER NÚMERO DE IDENTIFICACIÓN		122520031			
RENSEIGNEMENTS REÇUS PAR LE BUREAU LE / INFORMATION RECEIVED BY THE BUREAU ON / INFORMACIÓN RECIBIDA POR LA OFICINA EL						25.03.2022			
Cette demande de coordination, reçue par le Bureau des radiocommunications en vertu du numéro 9.30 du Règlement des radiocommunications, a été examinée au titre des numéros 9.35 et 9.36 et est publiée conformément au numéro 9.38. Elle est subordonnée au type de coordination indiqué dans la colonne de gauche par un X dans la case pertinente.			This request for coordination, received by the Radiocommunication Bureau pursuant to No. 9.30 of the Radio Regulations, has been examined under Nos. 9.35 and 9.36 and is published in accordance with No. 9.38. It is subject to the form of coordination indicated in the left-hand column by an X in the relevant box.			Esta solicitud de coordinación, recibida por la Oficina de Radiocomunicaciones de conformidad con el punto N° 9.30 del Reglamento de Radiocomunicaciones, se ha examinado de conformidad con los N° 9.35 y 9.36 y se publica de conformidad con el N° 9.38. Está sujeta al formulario de coordinación indicado en la columna de la izquierda con una X en la casilla correspondiente.			
Type de coordination mentionné dans le Tableau I / Form of coordination referred to in Table I / Forma de coordinación mencionada en el cuadro I									
X 9.7		Conformément aux numéros 9.50 à 9.52 du Règlement des radiocommunications, les Administrations identifiées dans le Tableau I ci-après sont priées de communiquer leur décision à l'Administration responsable et au Bureau avant la date limite indiquée ci-dessous.			In accordance with Nos. 9.50-9.52 of the Radio Regulations, the Administrations identified in Table I below are requested to communicate their decision to the Responsible administration and the Bureau by the deadline indicated below.		De conformidad con los N° 9.50-9.52 del Reglamento de Radiocomunicaciones, se solicita a las administraciones señaladas en el cuadro I a continuación que comuniquen su decisión a la administración responsable y a la Oficina antes del plazo indicado más abajo.		
X 9.7B									
X AP30#7.1									
X AP30A#7.1									
Type de coordination mentionné dans le Tableau II / Form of coordination referred to in Table II / Formulario de coordinación remitido al cuadro II									
X 9.11		Les Administrations, énumérées ou non dans le Tableau II ci-après, qui n'acceptent pas la demande de coordination au titre des numéros 9.11 à 9.14 et 9.21, sont priées de communiquer leurs observations à l'Administration responsable et au Bureau avant la date limite indiquée ci-dessous. Toute Administration qui ne réagira pas au titre du numéro 9.52 avant cette date limite sera considérée comme n'étant pas affectée et, dans les cas couverts par les numéros 9.11 à 9.14, les dispositions des numéros 9.48 et 9.49 s'appliqueront.			Administrations listed or not listed in Table II below, which do not agree to the request for coordination under Nos. 9.11 to 9.14 and 9.21 are requested to communicate their comments to the responsible administration and the Bureau by the deadline indicated below. Any administration not responding under No. 9.52 within this deadline shall be regarded as unaffected and, in the cases of Nos. 9.11 to 9.14, the provisions of Nos. 9.48 and 9.49 shall apply.		Se ruega a las Administraciones que figuran en la lista del Cuadro II siguiente, que no están de acuerdo con la solicitud de coordinación con arreglo a los números 9.11 a 9.14 y 9.21 que comuniquen sus comentarios a la administración responsable y a la Oficina dentro del plazo que se indica más adelante. Se considerará que toda administración que no responda con arreglo a lo dispuesto en el núm. 9.52 dentro del plazo indicado no se ve afectada y, en los casos de los números 9.11 a 9.14, se aplicarán las disposiciones de los números 9.48 y 9.49.		
X 9.11A									
9.12									
9.12A									
X 9.13									
X 9.14									
X 9.21/A									
9.21/B									
9.21/C									
DATE LIMITE POUR LA DÉCISION / EXPIRY DATE FOR DECISION / FECHA LÍMITE PARA LA DECISIÓN						06.01.2023			

Tableau II / Table II / Cuadro II / 表二 / Таблица II / II الجدول			
Disposition / Provision / Disposición / 条款 / Положение / 条款 / المكر	Administrations susceptibles d'être défavorablement influencées (à titre d'information uniquement, voir numéro 9.36.1) 可能受影响的主管部门(仅供参考, 见第 9.36.1 款)	Potentially affected administrations (for information only, see No. 9.36.1) Потенциально затрагиваемые администрации (исключительно для информации, см. п. 9.36.1)	Administraciones posiblemente afectadas (sólo para información, véase el N° 9.36.1) إدارات محتمل أن تتأثر تأثراً غير مؤات (انظر الرقم 1.36.9، على سبيل الإطلاع فقط)
X 9.11			
X 9.11A			
9.12			
9.12A			
X 9.13	AUS, CAN, CHN, CYP, D, E, G, HOL, ISR, KOR, LIE, LUX, NOR, NZL, PNG, RRW, RUS/IK, RUS, SLM, USA, VTN		
X 9.14	ARG*, ATG, AUS/NFK, B*, BAH, BLZ, BOL, BRB/LCA, BRB*, CAN*, CHL/PAQ, CHL*, CLM, CTR, CUB*, DMA, DNK/GRL, DOM, EQA, FJI*, FSM, G/AIA, G/BER, G/CYM, G/FLK, G/GCC, G/MRS, G/PTC, G/TCA, G/VRG, GRD, GTM, GUY, HND/SWN, HND, HOL/ABW, HOL/BES, HOL/CUW, HOL/SXM, HTI, JMC, KIR/PHX, KIR, KNA, LCA, MEX*, MHL, NCG, NRU, NZL/CKH, NZL/NIU, NZL/TKL, NZL*, PNR, PRG*, PRU, RUS*, SLM, SLV, SMO, SUR, TON, TRD, TUV, URG*, USA/ALS, USA/HWA, USA/HWL, USA/JAR, USA/JON, USA/MDW, USA/MEX, USA/PLM, USA/PTR*, USA/SMA, USA/VIR*, USA/WAK, USA*, VCT, VEN, VUT.		
X 9.21/A			
9.21/B			
9.21/C			

\*Les Administrations énumérées disposent d'une assignation aux services de Terre avec chevauchement inscrite dans le Fichier de référence international des Fréquences.  
\*The listed Administrations have an overlapping terrestrial assignment recorded in the MIFR.  
\*Las administraciones enumeradas tienen una asignación terrenal superpuesta inscrita en el Registro Internacional de Frecuencias.  
\*列表中的主管部门与频率登记表中记录的陆地指配重叠。  
\*Перечисленные выше администрации имеют присвоение наземным станциям с перекрыванием, записанном в Международном справочном регистре частот.  
\*ينظر للإدارات المعقدة تردد مخصص لخدمات الأرض متراكب ومسجل في السجل الأساسي الدولي للترددات.

1 9.21/A, 9.21/B et 9.21/C – au titre du numéro 9.21, administrations ayant des réseaux OSO, des réseaux non-OSO et des stations de Terre, respectivement.  
1 9.21/A, 9.21/B and 9.21/C – Under No. 9.21, administrations with GSO networks, Non-GSO networks and terrestrial stations, respectively.  
1 9.21/A, 9.21/B y 9.21/C – De conformidad con el N° 9.21, administraciones con redes OSO, redes no OSO y estaciones terrestres, respectivamente.  
1 9.21/A, 9.21/B и 9.21/C – в соответствии с п. 9.21 администрациями имеющие сети ГСО, сети НГСО и наземные станции соответственно.  
1 9.21/A, 9.21/B and 9.21/C – 根据第9.21款, 分别为有对地静止卫星轨道网络、非对地静止卫星轨道网络和地面电台的主管部门

# Exercise: Potentially affected Administration CAN comments on BR IFIC 2979



## Login

Click 'OK' if you connect as ITU-BR or enter the Adm./network org. code on whose behalf you are acting

CAN / [ ]

OK Cancel

Login – Enter ITU Administration Code and in certain case network organization code

SpaceCom

File Options Help

Potentially affected Administration's comments under No. 9.52

Who are you ?

Potentially affected Administration (Commenting on a CR/C)

Operator [ ]

An administration willing to enter in the coordination process under Nos 9.11 to 9.14, and 9.21 shall within four months of the date of publication of the BR IFIC inform the requesting administration of its disagreement and shall provide information concerning its own assignments upon which that disagreement is based (No. 9.52)

An administration not responding under No. 9.52C within the same four month period shall be regarded as unaffected and, in the case of No. 9.11 to 9.14 the provisions of No's 9.48 and 9.49 shall apply.

Copy of the comments is to be sent electronically to the Radiocommunication Bureau through the online interface 'e-submission for satellite network filings'

Next..

select a type of user (administrator or Operator)

1. Input a BR IFIC number to comment the CR/C special sections published within this BR IFIC

2. Locate the BR IFIC Database

3. Click "Get list of CR/C(s) button"

SpaceCom

File Options Help

Aff. ADM

Potentially affected Administration's comments under No. 9.52

1. Input information to get a list of CR/C(s) to comment

BR IFIC No. / Date 2979 / 06.09.2022 Expiry date for decision 06.01.2023

BR IFIC database C:\BR\_seminar and workshop\WRS\WRS-22\ific2979.mdb

Administration code / network org. CAN /

Comments file location

Get list of CR/C(s)...

2. Select a CR/C to comment and click 'Comment CR/C...'

Notice id	Special section	Rev.	No.	Adm.	Org.	Satellite network	Earth station	Orb.Pos.	Identified by BR under No. 9.36.1	Comments completion	Comments last update
122520031	CR/C/5720			F		F-SAT-N10-113W		-113.00	CAN	✘	
122520033	CR/C/5721			ARS	ARB	ARABSAT-11A-30.5E		30.50	CAN	✘	
122520032	CR/C/5722			ARS	ARB	ARABSAT-11B-26E		26.00	CAN	✘	

Not. ADM  
ITU BR

Your comments in the current BR IFIC are not valid please check all CR/C 's as completed

Comment CR/C... Create report

1. Input information to get a list of CR/C(s) to comment

BR IFIC No. / Date: 2979 / 06.09.2022 Expiry date for decision: 06.01.2023

BR IFIC database: C:\BR\_seminar and workshop\WRS\WRS-22\ific2979.mdb

Administration code / network org: CAN /

Comments file location: [ ]

Get list of CR/C(s)...

2. Select a CR/C to comment and click 'Comment CR/C...'

Notice id	Special section	Rev.	No.	Adm.	Org.	Satellite network	Earth station	Orb.Pos.	Identified by BR under No. 9.36.1	Comments completion	Comments last update
122520031	CR/C/5720			F		F-SAT-N10-113W		-113.00	CAN	✗	
122520033	CR/C/5721			ARS	ARB	ARABSAT-11A-30.5E		30.50	CAN	✗	
122520032	CR/C/5722			ARS	ARB	ARABSAT-11B-26E		26.00	CAN	✗	

⚠ Your comments in the current BR IFIC are not valid please check all CR/C 's as completed

Comment CR/C... Create report

CR/C information: Provision: 9.11, Special Section: CR/C/5720, Adm./ntwk. org: F, Satellite network: F-SAT-N10-113W, Orb. pos.: -113.00, Earth station: [ ]

1. Select the Form of coordination to comment

Form of coordination	Coordination from	Coordination with respect to	Identified	Last update	Comments completed
9.11	SS	TS			<input type="checkbox"/>
9.13	GSD	NGSD	CAN		<input type="checkbox"/>
9.14	SS	TS	CAN		<input type="checkbox"/>
9.21/A	SS	GSD			<input type="checkbox"/>

2. Enter your comments on groups by clicking the relevant check box in column 'Confirm/Add/Remove'. If you do not click, it means that you do not wish to be included in coordination process

Beam	Emi./Rcp.	Group	Freq. min. (MHz)	Freq. max. (MHz)	Identified by BR or added by affected Adm.	Confirm / Add / Remove	Administration comments	Remarks
DK2R	E	122623296	17550.000	17800.000	*	<input type="checkbox"/>	<- "Check to add aff. Adm.	
		122623297			*	<input type="checkbox"/>	<- "Check to add aff. Adm.	
		122623298			*	<input type="checkbox"/>	<- "Check to add aff. Adm.	
		122623299			*	<input type="checkbox"/>	<- "Check to add aff. Adm.	
		122623300			*	<input type="checkbox"/>	<- "Check to add aff. Adm.	
		122623301			*	<input type="checkbox"/>	<- "Check to add aff. Adm.	
		122623302			*	<input type="checkbox"/>	<- "Check to add aff. Adm.	
		122623303			*	<input type="checkbox"/>	<- "Check to add aff. Adm.	

3. Click 'Check Comments completed' when you have finished with all your entries on all provisions

Select a new CR/C... Save Check Comments completed Create report

1. Select the network to comment
2. Click 'Comment CR/C' button to input your comments in the next screen

Click 'i' to get information about the station codes used in the provision table

SpaceCom

File Options Help

Aff. ADM

Comment

Import

Validate/Send

Not. ADM  
ITU BR

### Potentially affected Administration's comments under No. 9.52

CR/C information

Provision	Special Section	Adm./ntwk. org	Satellite network	Orb. pos.	Earth station
9.11	CR/C/5720	F	F-SAT-N10-113W	-113.00	

1. Select the Form of coordination to comment

Form of coordination	Coordination from	Coordination with respect to	Identified	Last update	Comments completed
9.11	SS	TS			<input type="checkbox"/>
9.13	GSO	NGSO	CAN		<input type="checkbox"/>
9.14	SS	TS	CAN		<input type="checkbox"/>
9.21/A	SS	GSO			<input type="checkbox"/>

2. Enter your comments on groups by clicking the relevant check box in column 'Confirm/Add/Remove'  
If you do not click, it means that you do not wish to be included in coordination process

Beam	Emi./Rcp.	Group	Freq. min. (MHz)	Freq. max. (MHz)	Identified by BR or added by affected Adm.	Confirm / Add / Remove	Administration comments	Remarks
DK2R	E	122623296	17550.000	17800.000	*	<input checked="" type="checkbox"/>	<- *Check to add aff. Adm.	
		122623297			*	<input type="checkbox"/>	<- *Check to add aff. Adm.	
		122623298			*	<input type="checkbox"/>	<- *Check to add aff. Adm.	
		122623299			*	<input type="checkbox"/>	<- *Check to add aff. Adm.	
		122623300			*	<input type="checkbox"/>	<- *Check to add aff. Adm.	
		122623301			*	<input type="checkbox"/>	<- *Check to add aff. Adm.	
		122623302			*	<input type="checkbox"/>	<- *Check to add aff. Adm.	
		122623303			*	<input type="checkbox"/>	<- *Check to add aff. Adm.	

3. Click 'Check Comments completed' when you have finished with all your entries on all provisions

Apply filter Clear filter

Select a new CR/C... Save  Check Comments completed Create report

### Confirm your addition in coordination

According to the Bureau's examination, there is no power flux density excess over the territory of your Administration and your terrestrial services are already protected. There is no need for your Administration to be included in the coordination process.

If your Administration is still of the opinion that unacceptable interference could be caused, and that coordination is required, please, provide sample information below in remarks section.

Click 'Add' button to add your administration to the coordination process.

Geographical area: CAN

Remarks about your potentially affected network

Terrestrial Service

Add to the current group only  Add to all filtered groups except those having a remark

Add Cancel

For a specific provisions or groups, if your administration has not been identified as potentially affected by the BR examination, you have the possibility to request to be added in the coordination process. Then your comment is "wants to be added". Additional information may be requested.

SpaceCom

File Options Help

Aff. ADM

Comment

Import

Validate/Send

Potentially affected Administration's comments under No. 9.52

CR/C information

Provision	Special Section	Adm./ntwk. org.	Satellite network	Orb. pos.	Earth station
9.13	CR/C/5720	F	F-SAT-N10-113W	-113.00	

1. Select the Form of coordination to comment

Form of coordination	Coordination from	Coordination with respect to	Identified	Last update	Comments completed
9.11	SS	TS		05.10.2022...	<input type="checkbox"/>
9.13	GSO	NGSO	CAN		<input type="checkbox"/>
9.14	SS	TS	CAN		<input type="checkbox"/>
9.21/A	SS	GSO			<input type="checkbox"/>

Network selection **1**

2. Enter your comments on groups by clicking the relevant check box in column 'Confirm/Add/Remove'  
If you do not click, it means that you do not wish to be included in coordination process

Beam	Emi./Rcp.	Group	Freq. min. (MHz)	Freq. max. (MHz)	Class of station	Identified by BR or added by affected Adm.	Confirm / Add / Remove	Administration comments
DKR	E	122623191	18700.000	19700.000	EC	CAN	<input type="checkbox"/>	
		122623194			EC	CAN	<input type="checkbox"/>	
		122623197			EC	CAN	<input type="checkbox"/>	
		122623200			EC	CAN	<input type="checkbox"/>	
		122623203			EC	CAN	<input type="checkbox"/>	
		122623206			EC	CAN	<input type="checkbox"/>	
		122623209			EC	CAN	<input type="checkbox"/>	
		122623212			EC	CAN	<input type="checkbox"/>	
DSR		122622997	2170.000	2200.000	EI	CAN	<input type="checkbox"/>	
EKO		122623425	19692.000	19700.000	EK, ER	CAN	<input type="checkbox"/>	
		122623427	19693.750	19698.250	EK	CAN	<input type="checkbox"/>	
HDKR		122623258	18700.000	19700.000	EC	CAN	<input type="checkbox"/>	
		122623261			EC	CAN	<input type="checkbox"/>	

3. Click 'Check Comments completed' when you have finished with all your entries on all provisions

Apply filter Clear filter

Not. ADM ITU BR

Select a new CR/C... Save  Check Comments completed Create report

For provisions No. 9.12, 9.12A, 9.13

1. Click the network selection button
2. Select which networks you considered are affected. You may also click 'Select all'.
3. Click "Apply"

Confirm networks

Please confirm networks on which your objection is based

Select all Deselect all

Affected notice id.	sat. name	ntf_rsn	long_nom	Confirm as affected
115520231	102	C	NGSO	<input type="checkbox"/>
121520048	CANPLEIADES			<input type="checkbox"/>
113520282	CANPOL-2			<input type="checkbox"/>
120500079		N		<input type="checkbox"/>
117520106	CANPOL-3	C		<input type="checkbox"/>
116520421	CANSAT-LEO			<input type="checkbox"/>
112520490	COMMSTELLATION			<input type="checkbox"/>
120520102	HOTH			<input type="checkbox"/>

Apply Cancel

WARNING: If you are modifying previously entered comments, clicking on Apply button will reset any previously manual change done.

Confirm networks

Please confirm networks on which your objection is based

Select all Deselect all

Affected notice id.	sat. name	ntf_rsn	long_nom	Confirm as affected
115520231	102	C	NGSO	<input type="checkbox"/>
121520048	CANPLEIADES			<input type="checkbox"/>
113520282	CANPOL-2			<input checked="" type="checkbox"/>
120500079		N		<input checked="" type="checkbox"/>
117520106	CANPOL-3	C		<input type="checkbox"/>
116520421	CANSAT-LEO			<input type="checkbox"/>
112520490	COMMSTELLATION			<input checked="" type="checkbox"/>
120520102	HOTH			<input type="checkbox"/>

3 Apply Cancel

WARNING: If you are modifying previously entered comments, clicking on Apply button will reset any previously manual change done.



**Potentially affected Administration's comments under No. 9.52**

CR/C information

Provision	Special Section	Adm./ntwk. org.	Satellite network	Orb. pos.	Earth station
9.13	CR/C/5720	F	F-SAT-N10-113W	-113.00	

1. Select the Form of coordination to comment

Form of coordination	Coordination from	Coordination with respect to	Identified	Last update	Comments completed
9.11	SS	TS		05.10.2022 ...	<input type="checkbox"/>
9.13	GSD	NGSO	CAN	05.10.2022 ...	<input checked="" type="checkbox"/>
9.14	SS	TS	CAN		<input type="checkbox"/>
9.21/A	SS	GSD			<input type="checkbox"/>

2. Enter your comments on groups by clicking the relevant check box in column 'Confirm/Add/Remove'  
If you do not click, it means that you do not wish to be included in coordination process

Beam	Emi./Rcp.	Group	Freq. min. (MHz)	Freq. max. (MHz)	Class of station	Identified by BR or added by affected Adm.	Confirm / Add / Remove	Administration comments
DKR	E	122623191	18700.000	19700.000	EC	CAN	<input checked="" type="checkbox"/>	a3) coordination requested
		122623194			EC	CAN	<input checked="" type="checkbox"/>	a3) coordination requested
		122623197			EC	CAN	<input checked="" type="checkbox"/>	a3) coordination requested
		122623200			EC	CAN	<input checked="" type="checkbox"/>	a3) coordination requested
		122623203			EC	CAN	<input checked="" type="checkbox"/>	a3) coordination requested
		122623206			EC	CAN	<input checked="" type="checkbox"/>	a3) coordination requested
		122623209			EC	CAN	<input checked="" type="checkbox"/>	a3) coordination requested
		122623212			EC	CAN	<input checked="" type="checkbox"/>	a3) coordination requested
		DSR			122622997	2170.000	2200.000	EI
EKO	122623425	19692.000	19700.000	EK, ER	CAN	<input type="checkbox"/>		
	122623427	19693.750	19698.250	EK	CAN	<input type="checkbox"/>		
HDKR	122623258	18700.000	19700.000	EC	CAN	<input checked="" type="checkbox"/>	a3) coordination requested	
	122623261			EC	CAN	<input checked="" type="checkbox"/>	a3) coordination requested	

3. Click 'Check Comments completed' when you have finished with all your entries on all provisions

Apply filter Clear filter

Select a new CR/C... Save  Check Comments completed Create report

SpaceCom

File Options Help

Aff. ADM

Potentially affected Administration's comments under No. 9.52

CR/C information Provision Special Section Adm./ntwk. org. Satellite network Orb. pos. Earth station

9.14 CR/C/5720 F F-SAT-N10-113W -113.00

1. Select the Form of coordination to comment

Form of coordination	Coordination from	Coordination with respect to	Identified	Last update	Comments completed
9.11	SS	TS			<input type="checkbox"/>
9.13	GSD	NGSD	CAN	05.10.2022...	<input type="checkbox"/>
9.14	SS	TS	CAN		<input type="checkbox"/>
9.21/A	SS	GSD			<input type="checkbox"/>

2. Enter your comments on groups by clicking the relevant check box in column 'Confirm/Add/Remove'  
If you do not click, it means that you do not wish to be included in coordination process

Beam	Emi./Rcp.	Group	Freq. min. (MHz)	Freq. max. (MHz)	Identified by BR or added by affected Adm.	Confirm / Add / Remove	Administration comments	Remarks
B2R	E	122622891	11700.000	12200.000	*	<input type="checkbox"/>	<- "Check to add aff. Adm.	
		122622892			*	<input type="checkbox"/>	<- "Check to add aff. Adm.	
		122622893			*	<input type="checkbox"/>	<- "Check to add aff. Adm.	
		122622894			*	<input type="checkbox"/>	<- "Check to add aff. Adm.	
		122622895			*	<input type="checkbox"/>	<- "Check to add aff. Adm.	
		122622896			*	<input type="checkbox"/>	<- "Check to add aff. Adm.	
		122622897			*	<input type="checkbox"/>	<- "Check to add aff. Adm.	
DSR		122622997	2170.000	2200.000	*	<input type="checkbox"/>	<- "Check to add aff. Adm.	
					CAN	<input checked="" type="checkbox"/>		
EO		122623316	11700.000	12200.000	*	<input type="checkbox"/>	<- "Check to add aff. Adm.	
HB2R	122623140	*			<input type="checkbox"/>	<- "Check to add aff. Adm.		
	122623141	*			<input type="checkbox"/>	<- "Check to add aff. Adm.		

3. Click 'Check Comments completed' when you have finished with all your entries on all provisions

Apply filter Clear filter

Not. ADM ITU BR Save Check Comments completed Create report

SpaceCom

File Options Help

Aff. ADM

Potentially affected Administration's comments under No. 9.52

CR/C information Provision Special Section Adm./ntwk. org. Satellite network Orb. pos. Earth station

9.14 CR/C/5720 F F-SAT-N10-113W -113.00

1. Select the Form of coordination to comment

Form of coordination	Coordination from	Coordination with respect to	Identified	Last update	Comments completed
9.11	SS	TS			<input type="checkbox"/>
9.13	GSD	NGSD	CAN	05.10.2022...	<input type="checkbox"/>
9.14	SS	TS	CAN		<input type="checkbox"/>
9.21/A	SS	GSD			<input type="checkbox"/>

2. Enter your comments on groups by clicking the relevant check box in column 'Confirm/Add/Remove'  
If you do not click, it means that you do not wish to be included in coordination process

Beam	Emi./Rcp.	Group	Freq. min. (MHz)	Freq. max. (MHz)	Identified by BR or added by affected Adm.	Confirm / Add / Remove	Administration comments	Remarks
B2R	E	122622891	11700.000	12200.000	*	<input type="checkbox"/>	<- "Check to add aff. Adm.	
		122622892			*	<input type="checkbox"/>	<- "Check to add aff. Adm.	
		122622893			*	<input type="checkbox"/>	<- "Check to add aff. Adm.	
		122622894			*	<input type="checkbox"/>	<- "Check to add aff. Adm.	
		122622895			*	<input type="checkbox"/>	<- "Check to add aff. Adm.	
		122622896			*	<input type="checkbox"/>	<- "Check to add aff. Adm.	
		122622897			*	<input type="checkbox"/>	<- "Check to add aff. Adm.	
DSR		122622997	2170.000	2200.000	*	<input type="checkbox"/>	<- "Check to add aff. Adm.	
					CAN	<input type="checkbox"/>		
EO		122623316	11700.000	12200.000	*	<input type="checkbox"/>	<- "Check to add aff. Adm.	
HB2R	122623140	*			<input type="checkbox"/>	<- "Check to add aff. Adm.		
	122623141	*			<input type="checkbox"/>	<- "Check to add aff. Adm.		

3. Click 'Check Comments completed' when you have finished with all your entries on all provisions


Apply filter Clear filter

Not. ADM ITU BR Save Check Comments completed Create report

SpaceCom

Auto-confirm all BR examinations?

Yes No

Enter your comments by clicking the relevant check box in column "Confirm/Add/Remove" or click the auto-check button  to automatically input Your comments as coordination requested where identified by BR

SpaceCom

File Options Help

Aff. ADM

Potentially affected Administration's comments under No. 9.52

CR/C information Provision Special Section Adm./ntwk. org. Satellite network Orb. pos. Earth station

9.14 CR/C/5720 F F-SAT-N10-113W -113.00

1. Select the Form of coordination to comment

Form of coordination	Coordination from	Coordination with respect to	Identified	Last update	Comments completed
9.11	SS	TS			<input type="checkbox"/>
9.13	GSD	NGSD	CAN	05.10.2022...	<input type="checkbox"/>
9.14	SS	TS	CAN		<input type="checkbox"/>
9.21/A	SS	GSD			<input type="checkbox"/>

2. Enter your comments on groups by clicking the relevant check box in column 'Confirm/Add/Remove'  
If you do not click, it means that you do not wish to be included in coordination process

Beam	Emi./Rcp.	Group	Freq. min. (MHz)	Freq. max. (MHz)	Identified by BR or added by affected Adm.	Confirm / Add / Remove	Administration comments	Remarks				
B2R	E	122622894	11700.000	12200.000	*	<input type="checkbox"/>	<- "Check to add aff. Adm.					
		122622895			*	<input type="checkbox"/>	<- "Check to add aff. Adm.					
		122622896			*	<input type="checkbox"/>	<- "Check to add aff. Adm.					
		122622897			*	<input type="checkbox"/>	<- "Check to add aff. Adm.					
		122622898			*	<input type="checkbox"/>	<- "Check to add aff. Adm.					
		DSR				122622997	2170.000	2200.000	*	<input type="checkbox"/>	<- "Check to add aff. Adm.	
									CAN	<input checked="" type="checkbox"/>	a3) coordination requested	
EO		122623316	11700.000	12200.000	*	<input type="checkbox"/>	<- "Check to add aff. Adm.					
HB2R	122623140	*			<input type="checkbox"/>	<- "Check to add aff. Adm.						
	122623142	*			<input type="checkbox"/>	<- "Check to add aff. Adm.						
		122623143			*	<input type="checkbox"/>	<- "Check to add aff. Adm.					
		122623144			*	<input type="checkbox"/>	<- "Check to add aff. Adm.					

3. Click 'Check Comments completed' when you have finished with all your entries on all provisions

Apply filter Clear filter

Not. ADM ITU BR Save Check Comments completed Create report



SpaceCom

File Options Help

Aff. ADM

Potentially affected Administration's comments under No. 9.52

CR/C information: Provision: 9.14, Special Section: CR/C/5720, Adm./ntwk. org.: F, Satellite network: F-SAT-N10-113W, Orb. pos.: -113.00, Earth station:

1. Select the Form of coordination to comment

Form of coordination	Coordination from	Coordination with respect to	Identified	Last update	Comments completed
9.11	SS	TS		05.10.2022 ...	<input checked="" type="checkbox"/>
9.13	GSD	NGSD	CAN	05.10.2022 ...	<input checked="" type="checkbox"/>
9.14	SS	TS	CAN	05.10.2022 ...	<input checked="" type="checkbox"/>
9.21/A	SS	GSD		05.10.2022 ...	<input checked="" type="checkbox"/>

2. Enter your comments on groups by clicking the relevant check box in column 'Confirm/Add/Remove' If you do not click, it means that you do not wish to be included in coordination process

Beam	Emi./Rcp.	Group	Freq. min. (MHz)	Freq. max. (MHz)	Identified by BR or added by affected Adm.	Confirm / Add / Remove	Administration comments	Remarks
B2R	E	122622894	11700.000	12200.000	*	<input type="checkbox"/>	<- *Check to add aff. Adm.	
		122622895			*	<input type="checkbox"/>	<- *Check to add aff. Adm.	
		122622896			*	<input type="checkbox"/>	<- *Check to add aff. Adm.	
		122622897			*	<input type="checkbox"/>	<- *Check to add aff. Adm.	
		122622898			*	<input type="checkbox"/>	<- *Check to add aff. Adm.	
DSR		122622897	2170.000	2200.000	*	<input type="checkbox"/>	<- *Check to add aff. Adm.	
					CAN	<input checked="" type="checkbox"/>	a3) coordination requested	
EO		122623316	11700.000	12200.000	*	<input type="checkbox"/>	<- *Check to add aff. Adm.	
HB2R		122623140			*	<input type="checkbox"/>	<- *Check to add aff. Adm.	
		122623141			*	<input type="checkbox"/>	<- *Check to add aff. Adm.	
		122623142			*	<input type="checkbox"/>	<- *Check to add aff. Adm.	
		122623143			*	<input type="checkbox"/>	<- *Check to add aff. Adm.	
		122623144			*	<input type="checkbox"/>	<- *Check to add aff. Adm.	

3. Click 'Check Comments completed' when you have finished with all your entries on all provisions

Buttons: Select a new CR/C... (3), Save, Check Comments completed (1), Apply filter, Clear filter, Create report (2)

1. Click 'Check Comments Completed' button when you have finished with your inputs
2. You can click 'Create report' for verification
3. Click 'Select a new CR/C' button to comment other networks

Select a working report type

Report with comments (current provision)

Full report with comments (all provisions)

OK Cancel

Report on comments done by CAN on IFIC 2979 database for CR/C/5720 (Paper version is not receivable by BR, please submit .mdb file only)

Beam designation	Emi-Rcp	Group id.	Frequency band (MHz)	Administrations identified under No.9.11

Beam designation	Emi-Rcp	Group id.	Frequency band (MHz)	Administrations identified under No.9.13
HUKR	R	122623230	29500.000 - 29500.000	CAN
		122623232	29500.000 - 29500.000	CAN
		122623234	29500.000 - 29500.000	CAN
		122623236	29500.000 - 29500.000	CAN
		122623238	29500.000 - 29500.000	CAN
		122623240	29500.000 - 29500.000	CAN
		122623242	29500.000 - 29500.000	CAN
		122623244	29500.000 - 29500.000	CAN
		122623246	29500.000 - 29500.000	CAN
RRO	R	122623423	29494.000 - 29500.000	CAN
URR	R	122623214	29500.000 - 29500.000	CAN
		122623216	29500.000 - 29500.000	CAN
		122623218	29500.000 - 29500.000	CAN
		122623220	29500.000 - 29500.000	CAN
		122623222	29500.000 - 29500.000	CAN
		122623224	29500.000 - 29500.000	CAN
		122623226	29500.000 - 29500.000	CAN
		122623228	29500.000 - 29500.000	CAN
DRR	E	122623191	19700.000 - 19700.000	CAN
		122623194	19700.000 - 19700.000	CAN
		122623197	19700.000 - 19700.000	CAN
		122623200	19700.000 - 19700.000	CAN
		122623203	19700.000 - 19700.000	CAN
		122623206	19700.000 - 19700.000	CAN
		122623209	19700.000 - 19700.000	CAN
		122623212	19700.000 - 19700.000	CAN
HDRR	E	122623258	19700.000 - 19700.000	CAN
		122623261	19700.000 - 19700.000	CAN
		122623264	19700.000 - 19700.000	CAN
		122623267	19700.000 - 19700.000	CAN
		122623270	19700.000 - 19700.000	CAN
		122623273	19700.000 - 19700.000	CAN

ITU-BR SpaceCom working report (Created: 05.10.2022 10:11:18)

User status: Affected Administration ; User code: CAN  
 BR IFIC: 2979 ; Special Section: CR/C/5720 ; Adm./ntwk.org.: F ; Sat. ntwk: F-SAT-N10-113W ; Orb. pos.: -113.00 ;

Beam designation	Emi-Rcp	Group id.	Frequency band (MHz)	Administrations identified under No.9.13
		122623276	19700.000 - 19700.000	CAN
		122623279	19700.000 - 19700.000	CAN
		122623282	19700.000 - 19700.000	CAN

Station name	Notification reason	Orb. pos.
CANPOL-2	C	
CANPOL-2	N	
COMMSATELLATION	C	



SpaceCom

File Options Help

Aff. ADM Potentially affected Administration's comments under No. 9.52

1. Input information to get a list of CR/C(s) to comment

BR IFIC No. / Date 2979 / 06.09.2022 Expiry date for decision 06.01.2023

BR IFIC database C:\BR\_seminar and workshop\WRS\WRS-22\ific2979.mdb

Administration code / network org. CAN /

Comments file location C:\Users\karina\NTU\BR\_SPACE\_v9.0\SpaceCom\_Comments\CRD\_comments\IFIC2979\AffADM\IFIC2979\_CA

Get list of CR/C(s)...

2. Select a CR/C to comment and click 'Comment CR/C...'

	Notice id.	Special section	Rev.	No.	Adm.	Org.	Satellite network	Earth station	Orb.Pos.	Identified by BR under No. 9.36.1	Comments completion	Comments last update
▶	122520031	CR/C/5720			F		F-SAT-N10-113W		-113.00	CAN	✓	05.10.2022 19:15:59
	122520033	CR/C/5721			ARS	ARB	ARABSAT-11A-30.5E		30.50	CAN	✗	
	122520032	CR/C/5722			ARS	ARB	ARABSAT-11B-26E		26.00	CAN	✗	

0

⚠ Your comments in the current BR IFIC are not valid please check all CR/C 's as completed

Not. ADM ITU BR

Comment CR/C... Create report

SpaceCom

File Options Help

Aff. ADM Potentially affected Administration's comments under No. 9.52

1. Input information to get a list of CR/C(s) to comment

BR IFIC No. / Date 2979 / 06.09.2022 Expiry date for decision 06.01.2023

BR IFIC database C:\BR\_seminar and workshop\WRS\WRS-22\ific2979.mdb

Administration code / network org. CAN /

Comments file location C:\Users\karina\NTU\BR\_SPACE\_v9.0\SpaceCom\_Comments\CRD\_comments\IFIC2979\AffADM\IFIC2979\_CA

Get list of CR/C(s)...

2. Select a CR/C to comment and click 'Comment CR/C...'

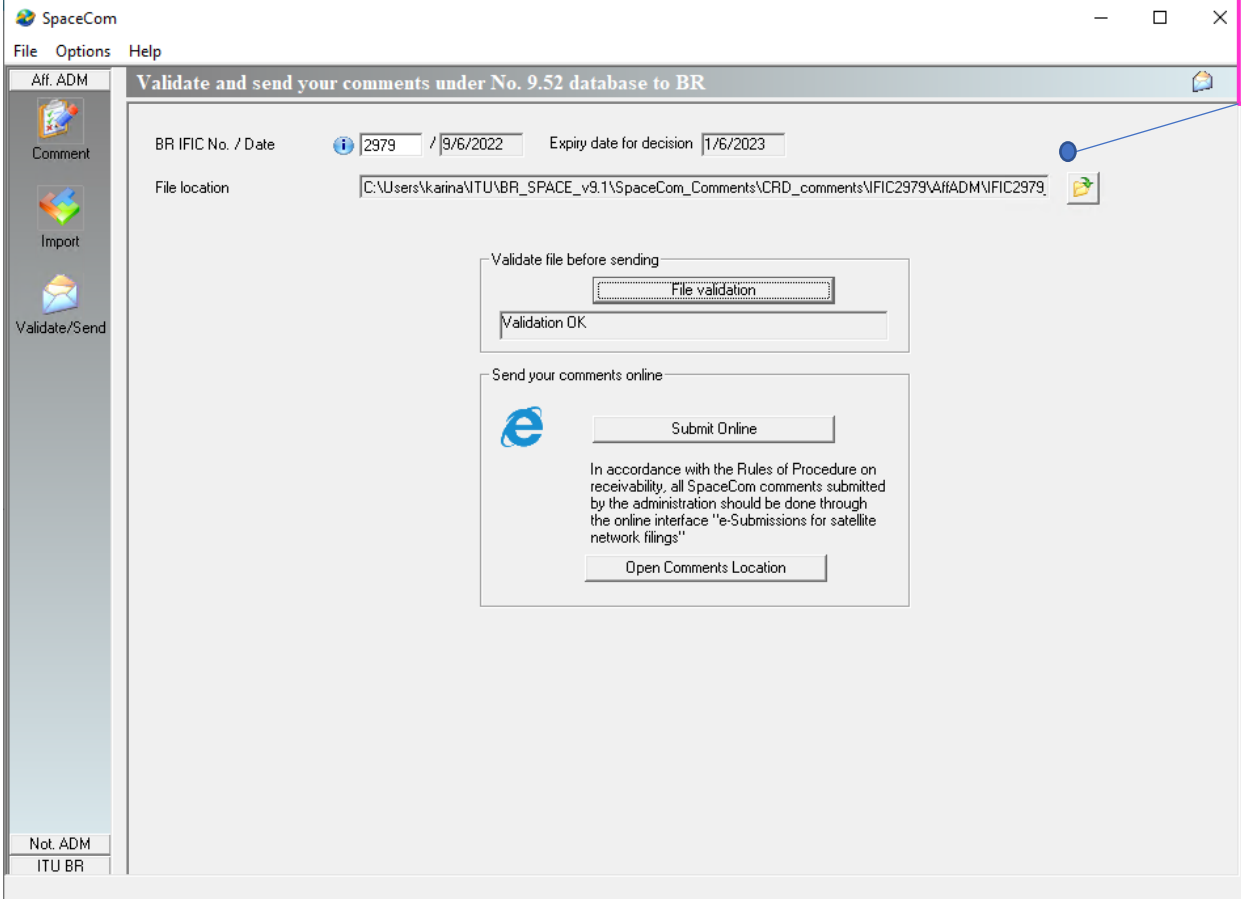
	Notice id.	Special section	Rev.	No.	Adm.	Org.	Satellite network	Earth station	Orb.Pos.	Identified by BR under No. 9.36.1	Comments completion	Comments last update
	122520031	CR/C/5720			F		F-SAT-N10-113W		-113.00	CAN	✓	05.10.2022 19:15:59
	122520033	CR/C/5721			ARS	ARB	ARABSAT-11A-30.5E		30.50	CAN	✓	05.10.2022 19:17:21
▶	122520032	CR/C/5722			ARS	ARB	ARABSAT-11B-26E		26.00	CAN	✓	05.10.2022 19:17:42

Not. ADM ITU BR

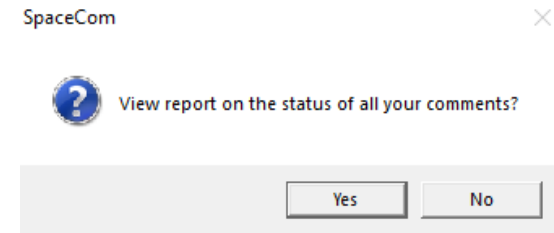
Comment CR/C... Create report

Repeat to create comments to each CR/C one by one





C:\Users\...\ITU\BR\_SPACE\_v9.1\SpaceCom\_Comments\CRD\_comments\IFIC2979\AffADM



User status: Affected Administration ; User code: CAN  
BR IFIC: 2979

Report on the status of your comments.  
(Paper version is not receivable by BR, please submit .mdb file only)

**CR/C/5720 ; F ; F-SAT-N10-113W (orb. pos.:113.00)**

Provision	Coordination requested	Coordination rejected	Added in coordination	COMMENTS COMPLETED
9.13	CAN	CAN		
9.14	CAN			

**CR/C/5721 ; ARS/ARB ; ARABSAT-11A-30.5E (orb. pos.:30.50)**

Provision	Coordination requested	Coordination rejected	Added in coordination	COMMENTS COMPLETED
9.13	CAN			

**CR/C/5722 ; ARS/ARB ; ARABSAT-11B-26E (orb. pos.:26.00)**

Provision	Coordination requested	Coordination rejected	Added in coordination	COMMENTS COMPLETED
9.13	CAN			

Once you have finished making comments;

1. (if you are the administration) Import/Merge comments on CR/C(s) from external database(s) to the local database in order to create a unique file to be sent to the BR
2. File Validation, you may view create/view a report on the status of all your comments
3. Submit online (E-Submission)





# 2

## Commenting under provisions No. 9.41





RÉSEAU À SATELLITE SATELLITE NETWORK RED DE SATELITE		<b>F-SAT-N10-113W</b>	SECTION SPÉCIALE N° SPECIAL SECTION No. SECCIÓN ESPECIAL N.º	<b>CR/C/5720</b>
STATION TERRIENNE EARTH STATION ESTACIÓN TERRENA		---	BR IFIC / DATE BR IFIC / DATE BR IFIC / FECHA	<b>2979 / 06.09.2022</b>
ADM. RESPONSABLE RESPONSIBLE ADM. ADM. RESPONSABLE	<b>F</b>	LONGITUDE NOMINALE NOMINAL LONGITUDE LONGITUD NOMINAL	<b>113 W</b>	NUMÉRO D'IDENTIFICATION IDENTIFICATION NUMBER NÚMERO DE IDENTIFICACIÓN
				<b>122520031</b>
RENSEIGNEMENTS REÇUS PAR LE BUREAU LE / INFORMATION RECEIVED BY THE BUREAU ON / INFORMACIÓN RECIBIDA POR LA OFICINA EL				<b>25.03.2022</b>

Cette demande de coordination, reçue par le Bureau des radiocommunications en vertu du numéro 9.30 du Règlement des radiocommunications, a été examinée au titre des numéros 9.35 et 9.36 et est publiée conformément au numéro 9.38. Elle est subordonnée au type de coordination indiqué dans la colonne de gauche par un X dans la case pertinente.

This request for coordination, received by the Radiocommunication Bureau pursuant to No. 9.30 of the Radio Regulations, has been examined under Nos. 9.35 and 9.36 and is published in accordance with No. 9.38. It is subject to the form of coordination indicated in the left-hand column by an X in the relevant box below.

Esta solicitud de coordinación, recibida por la Oficina de Radiocomunicaciones de conformidad con el punto N° 9.30 del Reglamento de Radiocomunicaciones, se ha examinado de conformidad con los N°s 9.35 y 9.36 y se publica de conformidad con el N° 9.38. Está sujeta al formulario de coordinación indicado en la columna de la izquierda con una X en la casilla correspondiente.

Type of coordination mentioned in Table I / Form of coordination referred to in Table I / Forma de coordinación mencionada en el cuadro I			
<input checked="" type="checkbox"/> 9.7	Conformément aux numéros 9.50 à 9.52 du Règlement des radiocommunications, les Administrations identifiées dans le Tableau I ci-après sont priées de communiquer leur décision à l'Administration responsable et au Bureau avant la date limite indiquée ci-dessous.	In accordance with Nos. 9.50-9.52 of the Radio Regulations, the Administrations identified in Table I below are requested to communicate their decision to the Responsible administration and the Bureau by the deadline indicated below.	De conformidad con los N°s 9.50-9.52 del Reglamento de Radiocomunicaciones, se solicita a las administraciones señaladas en el cuadro I a continuación que comuniquen su decisión a la administración responsable y a la Oficina antes del plazo indicado más abajo.
<input type="checkbox"/> 9.7A			
<input checked="" type="checkbox"/> AP30#7.1			
<input checked="" type="checkbox"/> AP30A#7.1	Type of coordination mentioned in Table II / Form of coordination referred to in Table II / Formulario de coordinación remitido al cuadro II		

Exercise: Potentially affected Administration CAN comments on BR IFIC 2979

Tableau I / Table I / Cuadro I / 表一 / Таблица I / الجدول I			
Disposition / Provision / Disposición / 條款 / Положение / 条款	Résumé des conditions régissant la coordination	Summary of coordination requirements	Resumen de los requisitos de coordinación
	协调要求概述	Сводные потребности в координации	موجز متطلبات التنسيق
<input checked="" type="checkbox"/> 9.7	ALG, ARG, ARS/ARB, AUS, AZE, B, BOL, BUL, <b>CAN</b> , CBG, CHN, CLM/ASA, CLM, CT/IRAS, CYP, CZE, D, E, EGY, F/EUT, G, GRC, GTM, HOL, I, IND, INS, IRN, ISR, J, JOR, KAZ, KOR, LUX, MEX, MLA, MLD, NCG, NIG, NOR, NPL, OMA, PAK, PNG, QAT, ROU, RUS/IK, RUS, S, SNG, SUI, THA, TON, TUR, UAE, UKR, USA, VEN, VTN		
<input type="checkbox"/> 9.7A			
<input type="checkbox"/> 9.7B			
<input checked="" type="checkbox"/> AP30#7.1	BLZ, BOL, CHL, CLM, EQA, G, GTM, HND, HOL, NCG, PNR, PRU, SLV, USA, VEN		
<input checked="" type="checkbox"/> AP30A#7.1	CHN, D, F/EUT, HOL, ISR, PNG, USA		

II. Liste des réseaux à satellite / stations terriennes (voir N° 9.36.2)

二、卫星网络/地球站列表 (见第9.36.2款)

II. List of satellite networks / earth stations (see No. 9.36.2)

II. Список спутниковых сетей / земных станций (см. п. 9.36.2)

II. Lista de redes de satélite / estaciones terrenas (véase el N° 9.36.2)

II. قائمة الشبكات الساتلية / المحطات الأرضية (انظر الرقم 9.36.2)

(2.36.9)

A1f1 Notif. adm.	A1f3 Inter. sat. org.	A1a Sat Network	A4a1 Orbital long.	BR3b Category of netif.	BR25 A/T	BR6a Id. no.	BR26 Causing interference	BR27 Receiving interference	BR28 Detected by coord. arc
CAN		ANIK E-A	107.3 W	N	A	93500182			A
		ANIK E-B	111.1 W	N	A	93500184	C	R	A
		ANIK E-D	118.7 W	N	A	102500408	C	R	A
		ANIK-F1	107.3 W	N	A	106500142	C	R	A
		ANIK-F2	111.1 W	N	A	105500032	C	R	A
		ANIK-F2R	111.1 W	C	A	111520060	C	R	A
		ANIK-F2R	111.1 W	N	A	119500040	C	R	A
		ANIK-F3R	118.7 W	C	A	111520021	C	R	A
		ANIK-F3R	118.7 W	N	A	120500299	C	R	A
		CAN-BSS-107.3W	107.3 W	C	A	116520178			A
		CAN-BSS19	103 W	N	A	112500165			A
		CAN-BSS36	107.3 W	C	A	108520022			A
		CAN-BSS36	107.3 W	N	A	114500102			A
		CAN-BSS62	103 W	C	A	116520042			A
		CAN-BSS63	111.1 W	C	A	116520233			A
		CANSAT KA-4	111.1 W	N	A	108501177			A
		CANSAT KA-5	118.7 W	N	A	108501178			A
		CANSAT KA-5X	118.7 W	N	A	108500946			A
		CANSAT-17	114.9 W	N	A	110500038	C	R	A
		CANSAT-18	118.7 W	N	A	108501202	C	R	A
		CANSAT-18	118.7 W	N	A	108501202			A
		CANSAT-24	111.1 W	N	A	112500169	C	R	A
		CANSAT-34	107.3 W	N	A	113500078	C	R	A
		CANSAT-50	107.3 W	N	A	114500101	C	R	A
		CANSAT-64	109.2 W	C	A	115520004	C	R	A
		CANSAT-64	109.2 W	N	A	120500298	C	R	A
		CANSAT-67TTCA	107.3 W	C	A	121520066	C	R	A
		CANSAT-67TTCA	107.3 W	C	A	121520066			A
		CANSAT-68	109.2 W	C	A	116520290	C	R	A
		CANSAT-69	109.2 W	C	A	117520086	C	R	A
		CANSAT-71	178.5 W	C	A	118520103	C	R	A
		CANSAT-73	109.2 W	C	A	120520048			A
		MSAT	106.5 W	N	A	101500597	C		



# CAN wants to include 120520178 (CANSAT-74 satellite network)

You may use  
GIBC Appendix 8  
Modul 9.41

Administration	Satellite name	Date of receipt	Status	Notification reason	Nominal longitude
F	F-SAT-N10-113W	3/25/2022	43	C	-113

Incoming Id	Existing Id	Finished OK	Production	User name	Started at	Finished at	Run time
122520031	120520178	Y	N	karina	10/6/2022 6:03:37 PM	10/6/2022 6:03:42 PM	4s

Exi beam name	Exi grp id	ΔT/T(%)	Inc I/W	Coord prov
KAU	120704605	68.8531	W	9.41
KAU	120704605	68.85319	W	9.41
KAU	120704605	68.85319	W	9.41
KAU	120704605	68.85319	W	9.41
KAU	120704605	68.85319	W	9.41
KAU	120704605	68.85319	W	9.41
KAU	120704605	68.85319	W	9.41
KAU	120704605	68.85319	W	9.41
KAU	120704605	68.85319	W	9.41
KAU	120704637	62.58043	W	9.41
KAU	120704637	62.58052	W	9.41
KAU	120704637	62.58052	W	9.41
KAU	120704605	68.85319	W	9.41

C:\Users\karina\ITU\BR\_SPACE\_v9.1\TEX\_RESULTS\122520031\AP8\_221006180337\AP8\_RESULTS.MDB

Select Result



## Exercise: Potentially affected Administration CAN comments on BR IFIC 2979



### Login

Click 'OK' if you connect as ITU-BR or enter the Adm./network org. code on whose behalf you are acting

/

Login – Enter ITU Administration Code and in certain case network organization code

SpaceCom

File Options Help

Potentially affected Administration's comments under No. 9.52

Who are you ?

Potentially affected Administration (Commenting on a CR/C)

Operator

An administration willing to enter in the coordination process under Nos 9.11 to 9.14, and 9.21 shall within four months of the date of publication of the BR IFIC inform the requesting administration of its disagreement and shall provide information concerning its own assignments upon which that disagreement is based (No. 9.52)

An administration not responding under No. 9.52C within the same four month period shall be regarded as unaffected and, in the case of No. 9.11 to 9.14 the provisions of No's 9.48 and 9.49 shall apply.

Copy of the comments is to be sent electronically to the Radiocommunication Bureau through the online interface 'e-submission for satellite network filings'

select a type of user (administrator or Operator)

1. Input a BR IFIC number to comment the CR/C special sections published within this BR IFIC

2. Locate the BR IFIC Database

3. Click "Get list of CR/C(s) button"

SpaceCom

File Options Help

Aff. ADM

Potentially affected Administration's comments under No. 9.41

-1. Input information to get a list of CR/C(s) to comment

BR IFIC No. / Date: 2979 / 06.09.2022 Expiry date for decision: 06.01.2023

BR IFIC database: C:\BR\_seminar and workshop\WRS\WRS-22\ific2979.mdb

Administration code / network org.: CAN /

Comments file location:

Get list of CR/C(s)...

2. Select a CR/C to comment and click 'Comment CR/C...'

Notice id	Special section	Rev.	No.	Adm.	Org.	Satellite network	Earth station	Orb.Pos.	Comments completion	Comments last update
122520031	CR/C/5720			F		F-SAT-N10-113W		-113.00	✘	
122520033	CR/C/5721			ARS	ARB	ARABSAT-11A-30.5E		30.50	✘	
122520032	CR/C/5722			ARS	ARB	ARABSAT-11B-26E		26.00	✘	

Not. ADM  
ITU BR

Your comments in the current BR IFIC are not valid please check all CR/C 's as completed

Comment CR/C... Create report



# add CANSAT-74 satellite network

SpaceCom - Potentially affected Administration's comments under No. 9.41

CR/C information

Provision	Special Section	Adm./ntwk. org.	Satellite network	Orb. pos.	Comments NOT completed
9.7IAI: 9.7AIFI: 9.7BIFI	CR/C/5720	F	F-SAT-N10-113W	-113.00	<input type="checkbox"/>

1. Enter your comments by filling the relevant boxes

Satellite name	Delta T/T or Other calc.	9.7IAI	9.7AIFI	Adm. comments
CANSAT-74	<input checked="" type="checkbox"/>	<input checked="" type="checkbox"/>	<input type="checkbox"/>	wants to be added
*	<input type="checkbox"/>	<input type="checkbox"/>	<input type="checkbox"/>	

Earth station name

Delta T/T or Other calc.	9.7BIFI	Adm. comments
<input type="checkbox"/>	<input type="checkbox"/>	
*	<input type="checkbox"/>	

Remark:

Delta T/T or other calculation has to be attached to the request, otherwise the request will be rejected!

2. Click 'Check Comments completed' when you have finished with all your entries

Select a new CR/C... Save  Check Comments completed Create report

SpaceCom - Potentially affected Administration's comments under No. 9.41

CR/C information

Provision	Special Section	Adm./ntwk. org.	Satellite network	Orb. pos.	Comments completed
9.7IAI: 9.7AIFI: 9.7BIFI	CR/C/5720	F	F-SAT-N10-113W	-113.00	<input checked="" type="checkbox"/>

1. Enter your comments by filling the relevant boxes

Satellite name	Delta T/T or Other calc.	9.7IAI	9.7AIFI	Adm. comments
CANSAT-74	<input checked="" type="checkbox"/>	<input checked="" type="checkbox"/>	<input type="checkbox"/>	wants to be added
*	<input type="checkbox"/>	<input type="checkbox"/>	<input type="checkbox"/>	

Earth station name

Delta T/T or Other calc.	9.7BIFI	Adm. comments
<input type="checkbox"/>	<input type="checkbox"/>	
*	<input type="checkbox"/>	

Remark:

Delta T/T or other calculation has to be attached to the request, otherwise the request will be rejected!


2. Click 'Check Comments completed' when you have finished with all your entries


Select a new CR/C... Save  Check Comments completed Create report

Click 'Check Comments Completed' button

**Potentially affected Administration's comments under No. 9.41**



1. Input information to get a list of CR/C(s) to comment

BR IFIC No. / Date  2979 / 06.09.2022 Expiry date for decision 06.01.2023




BR IFIC database  

Administration code / network org.  /

Comments file location

2. Select a CR/C to comment and click 'Comment CR/C...'

	Notice id	Special section	Rev.	No.	Adm.	Org.	Satellite network	Earth station	Orb.Pos.	Comments completion	Comments last update
▶	122520031	CR/C/5720			F		F-SAT-N10-113W		-113.00		06.10.2022 18:37:20
	122520033	CR/C/5721			ARS	ARB	ARABSAT-11A-30.5E		30.50		06.10.2022 18:37:48
	122520032	CR/C/5722			ARS	ARB	ARABSAT-11B-26E		26.00		06.10.2022 18:37:48

User status: Affected Administration ; User code: CAN  
BR IFIC: 2979

**Report on the status of your comments.**  
(Paper version is not receivable by BR, please submit .mdb file only)

**CR/C/5720 ; F ; F-SAT-N10-113W (orb. pos.: -113.00) ;**

Provision	Request for inclusion (space)	Request for inclusion (earth)	COMMENTS COMPLETED
9.7  A	CANSAT-74		
9.7A  F			
9.7B  F			

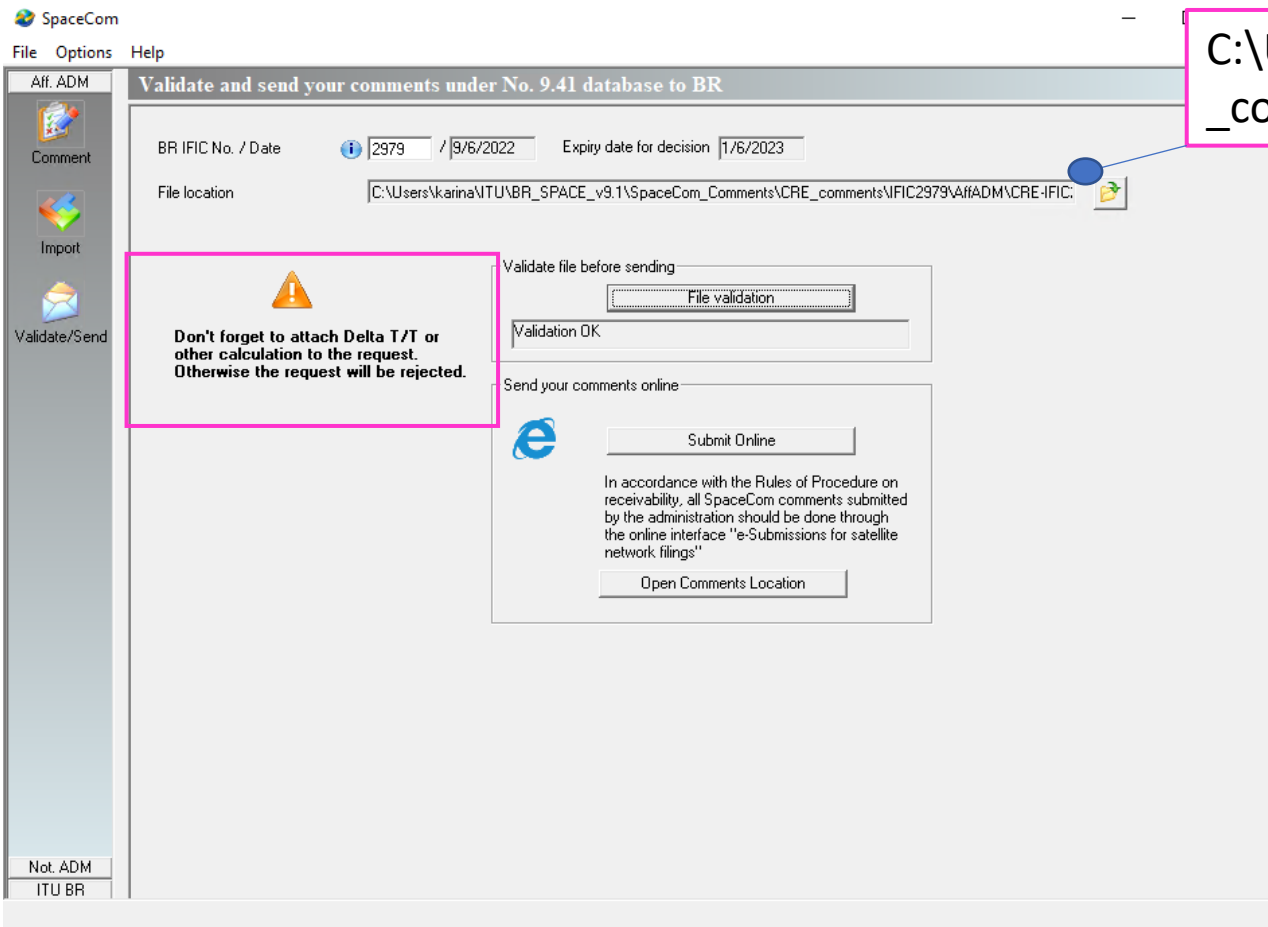
**CR/C/5721 ; ARS/ARB ; ARABSAT-11A-30.5E (orb. pos.: 30.50) ;**

Provision	Request for inclusion (space)	Request for inclusion (earth)	COMMENTS COMPLETED
9.7  A			
9.7A  F			
9.7B  F			

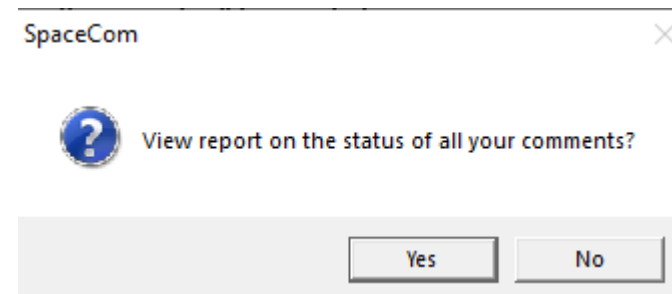
**CR/C/5722 ; ARS/ARB ; ARABSAT-11B-26E (orb. pos.: 26.00) ;**

Provision	Request for inclusion (space)	Request for inclusion (earth)	COMMENTS COMPLETED
9.7  A			
9.7A  F			
9.7B  F			

Repeat to create comments to each CR/C one by one or click 



C:\Users\....\ITU\BR\_SPACE\_v9.1\SpaceCom\_Comments\CRE\_comments\IFIC2979\AffADM



User status: Affected Administration ; User code: CAN  
BR IFIC: 2979

Report on the status of all your comments.  
(Paper version is not receivable by BR, please submit .mdb file only)

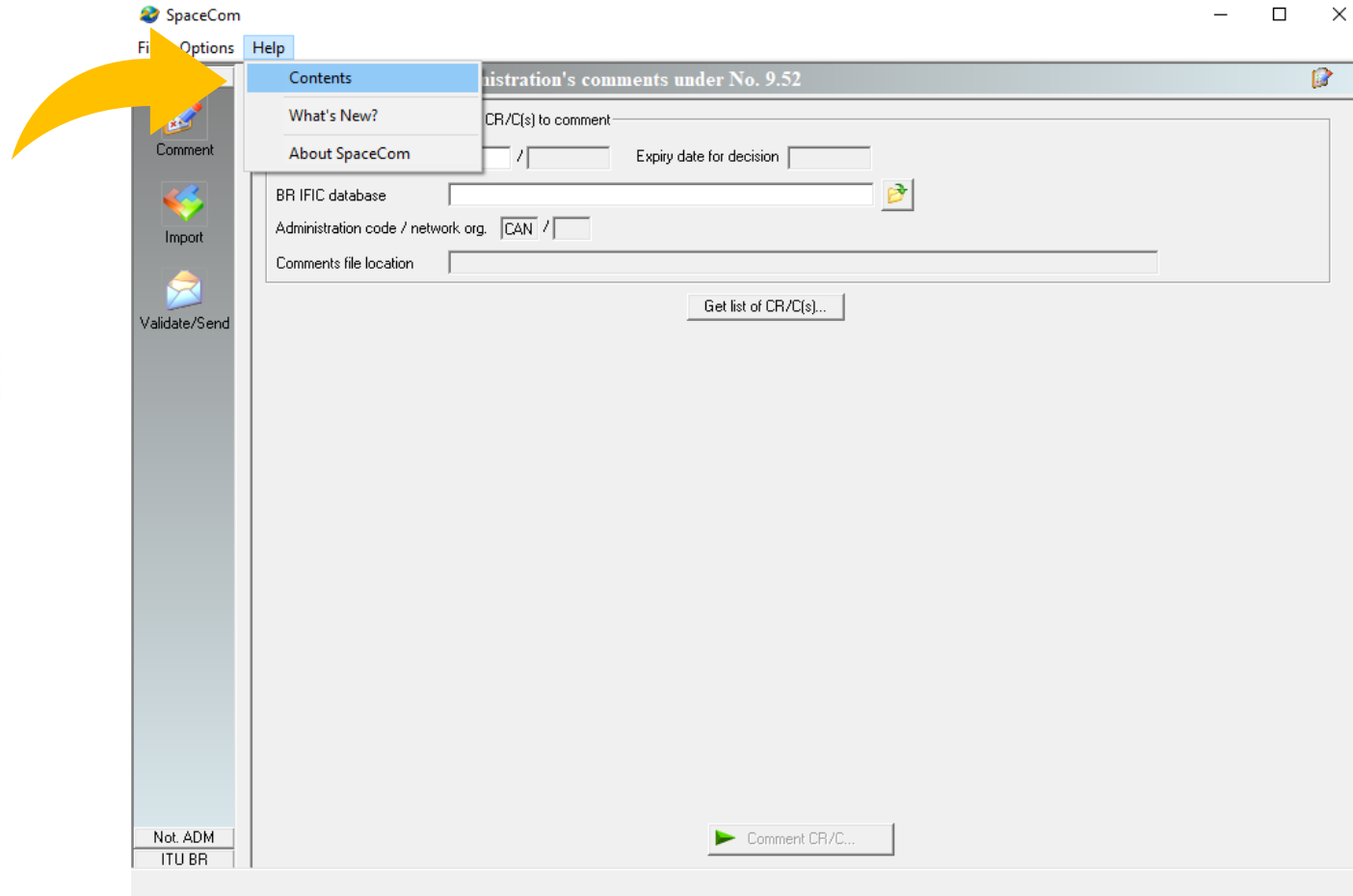
CR/C/5720 ; F ; F-SAT-N10-113W ; (orb. pos.:113)  
COMMENTS COMPLETED

CR/C/5721 ; ARS/ARB ; ARABSAT-11A-30.5E ; (orb. pos.:30.5)  
COMMENTS COMPLETED

CR/C/5722 ; ARS/ARB ; ARABSAT-11B-26E ; (orb. pos.:26)  
COMMENTS COMPLETED

Once you have finished making comments;

1. (if you are the administration) Import/Merge comments on CR/C(s) from external database(s) to the local database in order to create a unique file to be sent to the BR
2. File Validation, you may view create/view a report on the status of all your comments
3. Submit online (E-Submission) – don't forget to attach Delta T/T or other calculation to the request



More info:

<https://www.youtube.com/watch?v=vfw3iyriMqw>

<https://www.youtube.com/watch?v=bGdPhspMEtI>

## A Quick Recap ....

Administrations should comment:

- To protect their radiocommunication services against potential interference
- To exclude the territory of an administration from the service area

Your comments should be

- submitted within 4 months
- captured using SpaceCom software
- submitted to BR using E-submission.

Remember to follow the required technical criteria; validity of your submission.

For commenting under No. 9.41, do not forget to attach the calculations to your submission.



4 Months !!!

UNION INTERNATIONALE DES TÉLÉCOMMUNICATIONS BUREAU DES RADIOCOMMUNICATIONS		INTERNATIONAL TELECOMMUNICATION UNION RADIOCOMMUNICATION BUREAU		UNIÓN INTERNACIONAL DE TELECOMUNICACIONES OFICINA DE RADIOCOMUNICACIONES	
RÉSEAU À SATELLITE SATELLITE NETWORK RED DE SATELITE		F-SAT-N10-113W		SECTION SPÉCIALE N° SPECIAL SECTION No. SECCIÓN ESPECIAL N.º	
STATION TERRIENNE EARTH STATION ESTACIÓN TERRENA		---		BR IFIC / DATE BR IFIC / DATE BR IFIC / FECHA	
ADM. RESPONSABLE RESPONSIBLE ADM. ADM. RESPONSABLE		F		LONGITUDE NOMINALE NOMINAL LONGITUDE LONGITUD NOMINAL	
		113 W		NUMÉRO D'IDENTIFICATION IDENTIFICATION NUMBER NÚMERO DE IDENTIFICACIÓN	
RENSEIGNEMENTS REÇUS PAR LE BUREAU LE / INFORMATION RECEIVED BY THE BUREAU ON / INFORMACIÓN RECIBIDA POR LA OFICINA EL				25.03.2022	
Cette demande de coordination, reçue par le Bureau des radiocommunications en vertu du numéro 9.30 du Règlement des radiocommunications, a été examinée au titre des numéros 9.35 et 9.36 et est publiée conformément au numéro 9.38. Elle est subordonnée au type de coordination indiqué dans la colonne de gauche par un X dans la case pertinente.		This request for coordination, received by the Radiocommunication Bureau pursuant to No. 9.30 of the Radio Regulations, has been examined under Nos. 9.35 and 9.36 and is published in accordance with No. 9.38. It is subject to the form of coordination indicated in the left-hand column by an X in the relevant box		Esta solicitud de coordinación, recibida por la Oficina de Radiocomunicaciones de conformidad con el punto N° 9.30 del Reglamento de Radiocomunicaciones, se ha examinado de conformidad con los N° 9.35 y 9.36 y se publica de conformidad con el N° 9.38. Está sujeta al formulario de coordinación indicado en la columna de la izquierda con una X en la casilla correspondiente.	
Type de coordination mentionné dans le Tableau I / Form of coordination referred to in Table I / Forma de coordinación mencionada en el cuadro I					
X 9.7		Conformément aux numéros 9.50 à 9.52 du Règlement des radiocommunications, les Administrations identifiées dans le Tableau I ci-après sont priées de communiquer leur décision à l'Administration responsable et au Bureau avant la date limite indiquée ci-dessous.		In accordance with Nos. 9.50-9.52 of the Radio Regulations, the Administrations identified in Table I below are requested to communicate their decision to the Responsible administration and the Bureau by the deadline indicated below.	
9.7A					
9.7B					
X AP30#7.1					
X AP30A#7.1					
Type de coordination mentionné dans le Tableau II / Form of coordination referred to in Table II / Formulario de coordinación remitido al cuadro II					
X 9.11		Les Administrations, énumérées ou non dans le Tableau II ci-après, qui n'acceptent pas la demande de coordination au titre des numéros 9.11 à 9.14 et 9.21, sont priées de communiquer leurs observations à l'Administration responsable et au Bureau avant la date limite indiquée ci-dessous. Toute Administration qui ne réagira pas au titre du numéro 9.52 avant cette date limite sera considérée comme n'étant pas affectée et, dans les cas couverts par les numéros 9.11 à 9.14, les dispositions des numéros 9.48 et 9.49 s'appliqueront.		Administrations listed or not listed in Table II below, which do not agree to the request for coordination under Nos. 9.11 to 9.14 and 9.21 are requested to communicate their comments to the responsible administration and the Bureau by the deadline indicated below. Any administration not responding under No. 9.52 within this deadline shall be regarded as unaffected and, in the cases of Nos. 9.11 to 9.14, the provisions of Nos. 9.48 and 9.49 shall apply.	
X 9.11A					
9.12					
9.12A					
X 9.13					
X 9.14					
X 9.21/A					
9.21/B					
9.21/C					
DATE LIMITE POUR LA DÉCISION / EXPIRY DATE FOR DECISION / FECHA LÍMITE PARA LA DECISIÓN				06.01.2023	

ATTENTION PLEASE

Please use SpaceCom V9.1 as soon as IFIC mdb is in V9.1





# Thank you!

ITU – Radiocommunication Bureau

Questions to [brmail@itu.int](mailto:brmail@itu.int) or [BR\\_SpaceCom\\_Support@itu.int](mailto:BR_SpaceCom_Support@itu.int)

