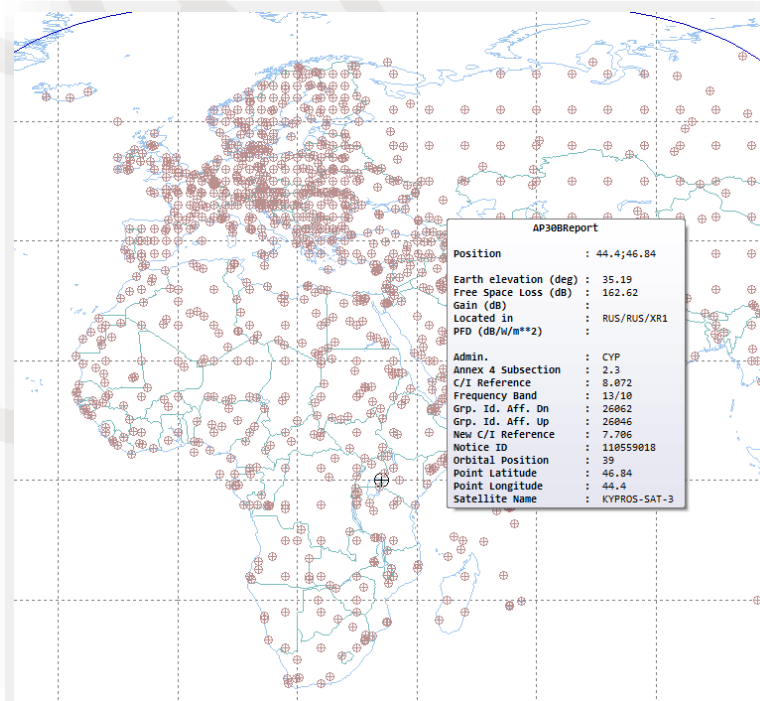


What's New in GIMS 9



Information Points

An easier way of viewing points on diagram

- In GIMS 8, used a workaround:
 - **Capture | Discrete Service Point**
- In GIMS 9,
 - Create an information point

Creating Information Points (I)

Information Point Tool



- Similarly to other pointing tools
 1. Activate the information point tool
 2. Click on the map

- Change properties (location...) in the usual way
 1. Activate the selection tool
 2. Double-click the point

Creating Information Points (II)

Copy/Paste

Select the text in the attached file and paste it into a new diagram window (at position 0.0 degree)



This shows you the supported coordinate formats.



Creating Information Points (II)

Copy/Paste

Select coordinates in *.LST files produced by GIBC and paste into GIMS

```

EXI DOWN-LINK IS AFFECTED

I S USA      USABSS-37      61.50W 0.05 0.05  12.67598 G  26000 K  29.05.12      B112.555006/001.001123/0003
SP11      EV CL      50.2 DB
      26M0G7W--      9.3 DBW -64.8 DBW/HZ -64.8 DBW/HZ      2D:29.05.12

E S MEX      QUETZSAT-77 TTC      77.00W 0.05 0.05  12.68850 G  1000 K  03.08.11      A B111.556001/000.005764/0013
CADR      EK M      33.5 DB
      1M00G9D--      -6.0 DBW -66.0 DBW/HZ      2D:03.08.11
E E MEX      TYPICAL-A1      REC-580-6      61.3 DB

      AP30 AN1 SECT 6      BROADCASTING-SATELLITE
      REGION 2      082W15 28N37 USA      49.98 -131.23      0.67 -131.90 A30#A1S6.1

2501.75000 M      40000 KHZ 25M0G7W-- 28.9 DBW -45.0 DBW/HZ      N-      0001

      (76) RR 21.16      MOBILE-SATELLITE      REF. BW      1.000MHZ
      ALL WORLD      119E41 47N11 CHN      40.0 -108.3      27.7 -136.0      N-
  
```

Creating Information Points (III)

Copy/Paste (from SpaceCap)



Video

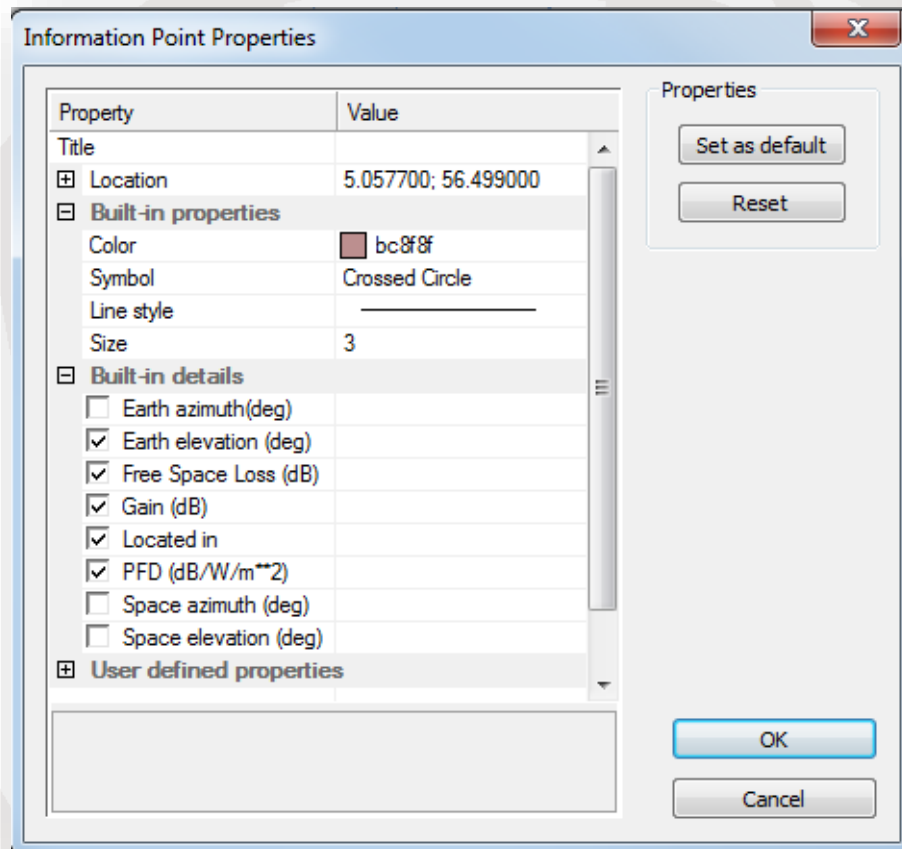
Creating Information Points (IV)

Load test points from SPS database



Video

Info Points Properties & Details (I)



The dialog box titled "Information Point Properties" contains a table of properties and their values, and a section for built-in details.

| Property | Value |
|--|---------------------|
| Title | |
| Location | 5.057700; 56.499000 |
| Built-in properties | |
| Color | bc8f8f |
| Symbol | Crossed Circle |
| Line style | |
| Size | 3 |
| Built-in details | |
| <input type="checkbox"/> Earth azimuth(deg) | |
| <input checked="" type="checkbox"/> Earth elevation (deg) | |
| <input checked="" type="checkbox"/> Free Space Loss (dB) | |
| <input checked="" type="checkbox"/> Gain (dB) | |
| <input checked="" type="checkbox"/> Located in | |
| <input checked="" type="checkbox"/> PFD (dB/W/m ²) | |
| <input type="checkbox"/> Space azimuth (deg) | |
| <input type="checkbox"/> Space elevation (deg) | |
| User defined properties | |

Buttons: Set as default, Reset, OK, Cancel

Basic properties, always available:

Built-in Properties

Location, style...

Built-in Details

"Calculated" values provided by GIMS
(always apply to all points)

Set as default

Make the selected properties the default ones when creating a new point

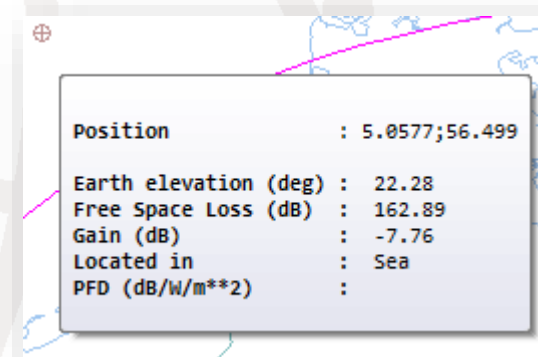
Info Points Properties & Details (II)

Activate tooltips

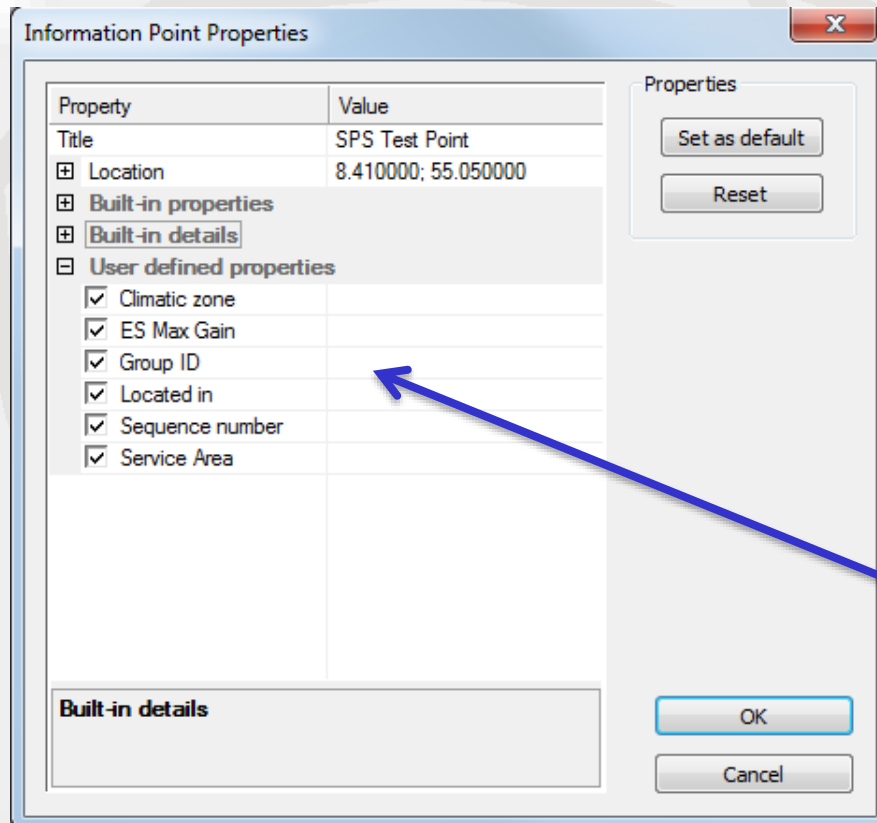
Activate the selector tool



Selected details shown
in the point's tooltip



Info Points Properties & Details (III)



The dialog box 'Information Point Properties' contains a table of properties and a section for user-defined properties. A blue arrow points from the text 'e.g. information related to a test point loaded from SPS_ALL and attached to each point' to the 'User defined properties' section.

| Property | Value |
|---|---------------------|
| Title | SPS Test Point |
| Location | 8.410000; 55.050000 |
| Built-in properties | |
| Built-in details | |
| User defined properties | |
| <input checked="" type="checkbox"/> Climatic zone | |
| <input checked="" type="checkbox"/> ES Max Gain | |
| <input checked="" type="checkbox"/> Group ID | |
| <input checked="" type="checkbox"/> Located in | |
| <input checked="" type="checkbox"/> Sequence number | |
| <input checked="" type="checkbox"/> Service Area | |

Built-in details

Properties

Set as default

Reset

OK

Cancel

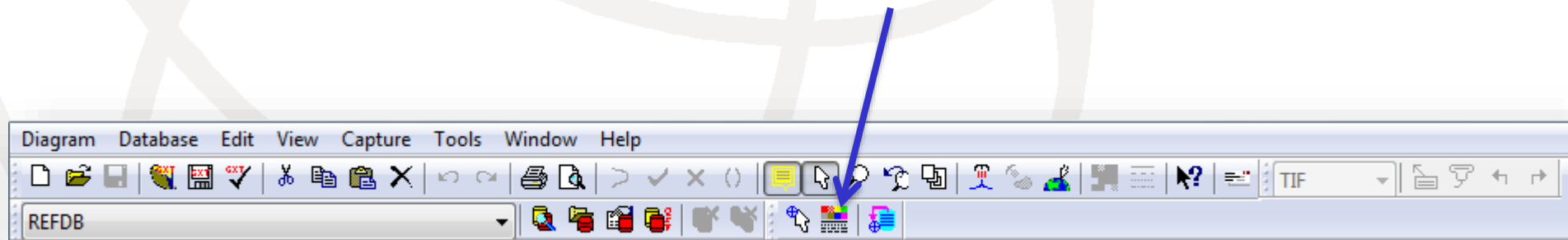
User defined properties

Any properties (i.e. name/value pairs) attached to the point when created

e.g. information related to a test point loaded from SPS_ALL and attached to each point

Info Points Properties & Details (IV)

- Double-click **one point** to change its properties
- Change properties of **several points** with properties toolbar button



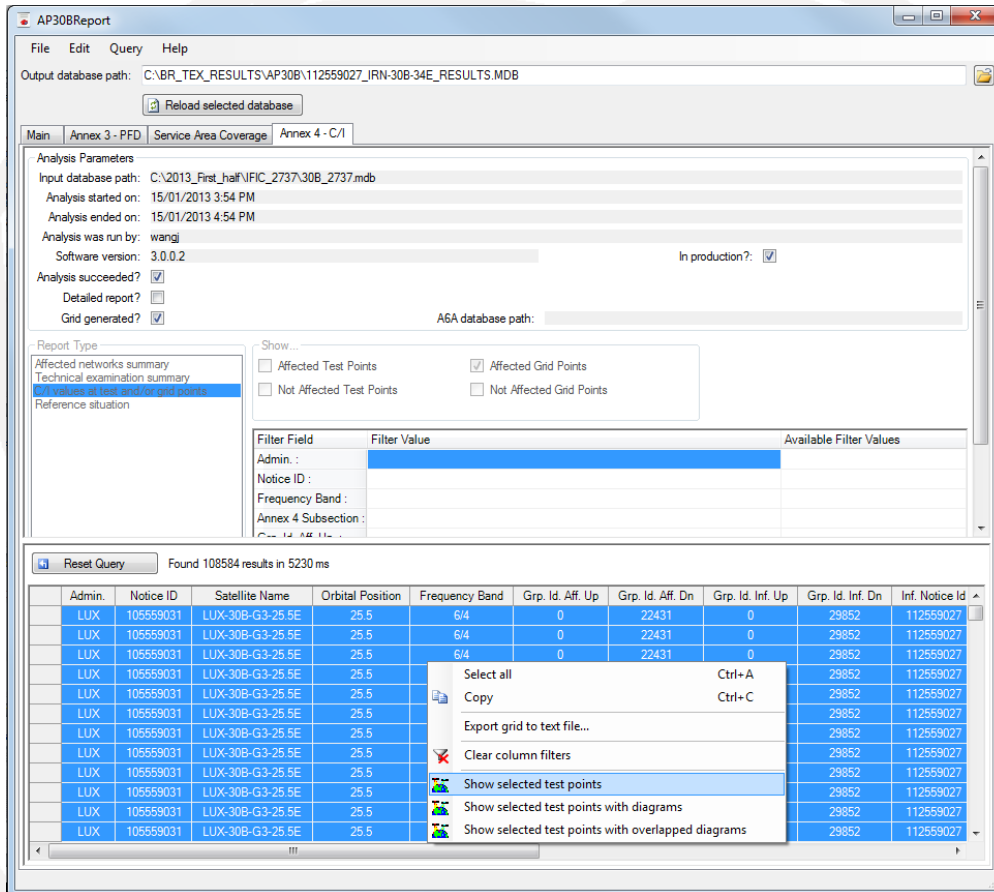
Information Points Misc

- Copy points in GIMS and paste into text document, Excel spreadsheet...
- Undo/redo work with info points
- Cannot save info points yet.
 - Workaround: copy/paste into text file

Programming Information Points

- Use new functions in gimapi32.dll
 - gmInfoPointShow
 - This function allows the application to use GIMS to display a series of information points
 - gmInfoPointShowWithDiagram
 - This function allows the application to use GIMS to display a series of information points along with diagrams.
 - gmInfoPointShowWithOvlpDiagram
 - This function allows the application to use GIMS to display a series of information points along with diagrams.

Information Point “Clients”



AP30BReport

File Edit Query Help

Output database path: C:\BR_TEX_RESULTS\AP30B\112559027_IRN-30B-34E_RESULTS.MDB

Reload selected database

Main Annex 3 - PFD Service Area Coverage Annex 4 - C/I

Analysis Parameters

Input database path: C:\2013_First_half\NFC\2737\30B_2737.mdb

Analysis started on: 15/01/2013 3:54 PM

Analysis ended on: 15/01/2013 4:54 PM

Analysis was run by: wangi

Software version: 3.0.0.2

In production?: ☒

Analysis succeeded? ☒

Detailed report? ☐

Grid generated? ☒

A6A database path:

Report Type

Affected networks summary

Technical examination summary

C/I values at test and/or grid points

Reference situation

Show...

☐ Affected Test Points ☒ Affected Grid Points

☐ Not Affected Test Points ☐ Not Affected Grid Points

| Filter Field | Filter Value | Available Filter Values |
|----------------------|--------------|-------------------------|
| Admin. : | | |
| Notice ID : | | |
| Frequency Band : | | |
| Annex 4 Subsection : | | |

Reset Query Found 108584 results in 5230 ms

| Admin. | Notice ID | Satellite Name | Orbital Position | Frequency Band | Grp. Id. Aff. Up | Grp. Id. Aff. Dn | Grp. Id. Inf. Up | Grp. Id. Inf. Dn | Inf. Notice Id |
|--------|-----------|------------------|------------------|----------------|------------------|------------------|------------------|------------------|----------------|
| LUX | 105559031 | LUX-30B-G3-25.5E | 25.5 | 6/4 | 0 | 22431 | 0 | 29852 | 112559027 |
| LUX | 105559031 | LUX-30B-G3-25.5E | 25.5 | 6/4 | 0 | 22431 | 0 | 29852 | 112559027 |
| LUX | 105559031 | LUX-30B-G3-25.5E | 25.5 | 6/4 | 0 | 22431 | 0 | 29852 | 112559027 |
| LUX | 105559031 | LUX-30B-G3-25.5E | 25.5 | | | | | 29852 | 112559027 |
| LUX | 105559031 | LUX-30B-G3-25.5E | 25.5 | | | | | 29852 | 112559027 |
| LUX | 105559031 | LUX-30B-G3-25.5E | 25.5 | | | | | 29852 | 112559027 |
| LUX | 105559031 | LUX-30B-G3-25.5E | 25.5 | | | | | 29852 | 112559027 |
| LUX | 105559031 | LUX-30B-G3-25.5E | 25.5 | | | | | 29852 | 112559027 |
| LUX | 105559031 | LUX-30B-G3-25.5E | 25.5 | | | | | 29852 | 112559027 |
| LUX | 105559031 | LUX-30B-G3-25.5E | 25.5 | | | | | 29852 | 112559027 |
| LUX | 105559031 | LUX-30B-G3-25.5E | 25.5 | | | | | 29852 | 112559027 |
| LUX | 105559031 | LUX-30B-G3-25.5E | 25.5 | | | | | 29852 | 112559027 |
| LUX | 105559031 | LUX-30B-G3-25.5E | 25.5 | | | | | 29852 | 112559027 |
| LUX | 105559031 | LUX-30B-G3-25.5E | 25.5 | | | | | 29852 | 112559027 |
| LUX | 105559031 | LUX-30B-G3-25.5E | 25.5 | | | | | 29852 | 112559027 |

Select all Ctrl+A

Copy Ctrl+C

Export grid to text file...

Clear column filters

Show selected test points

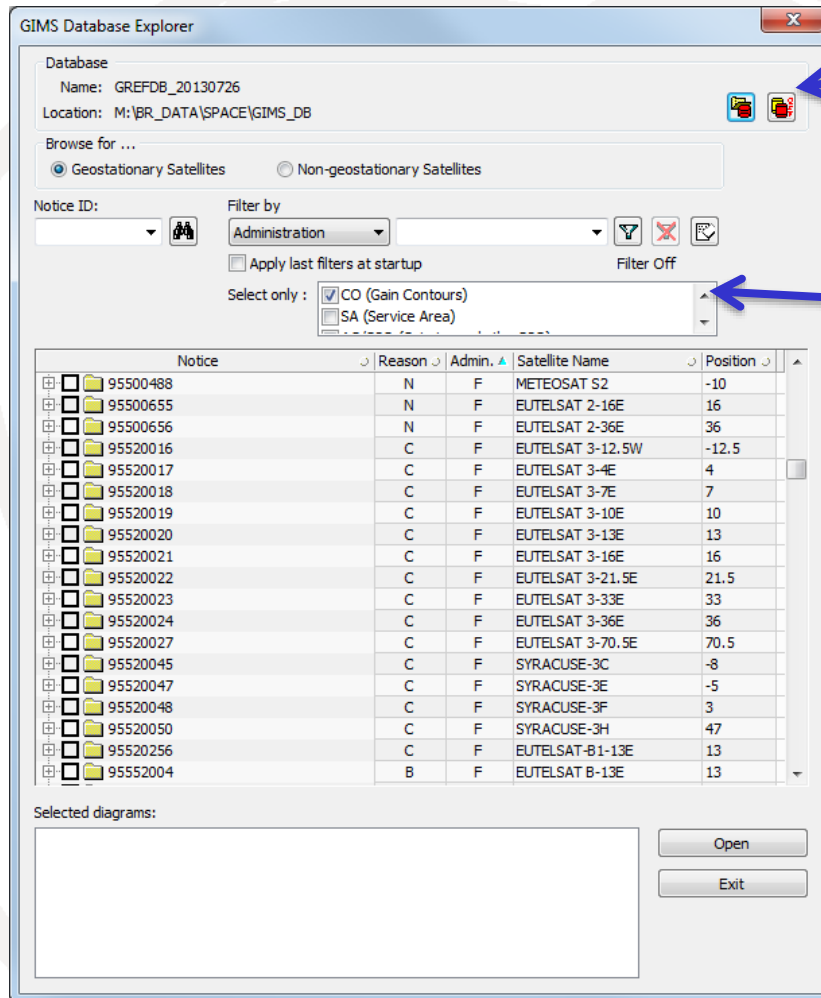
Show selected test points with diagrams

Show selected test points with overlapped diagrams

Now, AP30BReport to show points in query results (like SPSReports).

Others in the future. Hopefully...

Database Explorer

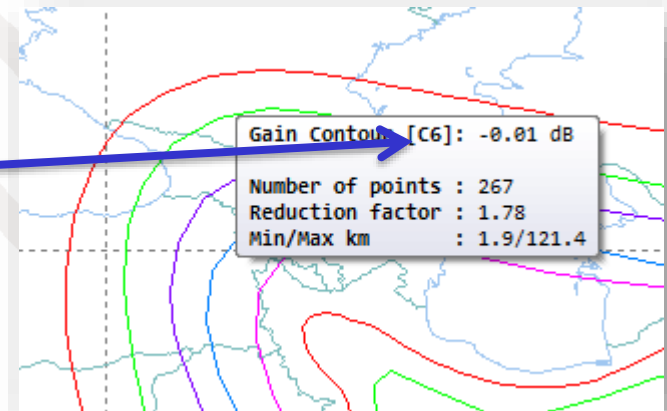


Start GimsQry on open database

Filter the diagram types you want to select

Other New Features

Gain contour tooltip shows index of contour in GXT file



New unit conversion dialog



Double-click status bar to edit units options for coordinates displayed in the status bar.