



**International Telecommunication Union**

## **REQUIREMENTS FOR UPDATES OF SMS4DC TOOL**

**Mr. Srđan Mihaljević  
ITU Expert**



**International Telecommunication Union**

## **IMPORT TOOL**

Database container: ImportTemplate.mdb

Experience

- Time intensive preparatory procedure
  - a) only five tables in container and SMS4DC-NEW many more
  - b) some mandatory fields in SMS4DC are missing in containers



## MISSING FIELDS

### STATION TABLE

1. SiteID
2. NoticeType

### TRANSMITTER TABLE

1. Pol
2. Noise Factor (opt)

TX and RX data are not imported



## MISSING REFERENCE

In Receiver Table there is RX field .

For that field in manual it is written that is reserved for future use.

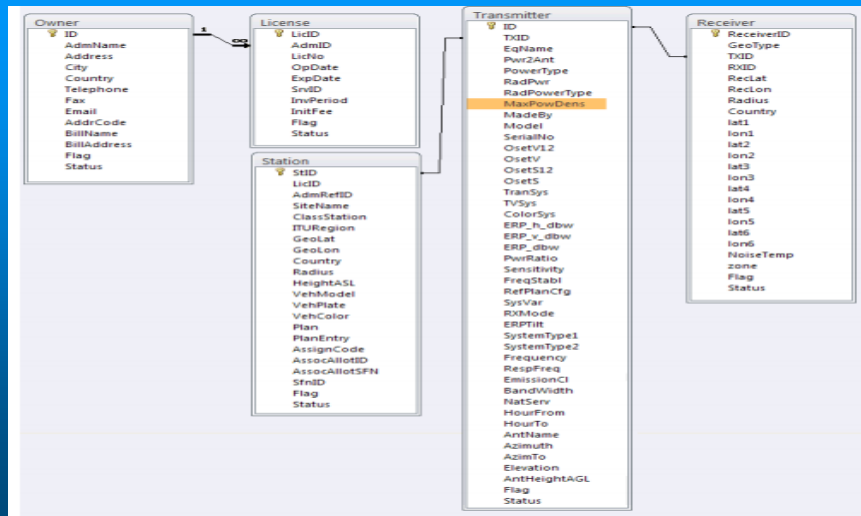
The database graph in manual shows one way relation between field StID in Station Table and field ID in Transmitter Table and Field ID in Transmitter table and TX field in Receiver Table.

Thus, there is no reference to RX field.



## International Telecommunication Union

### Tables



## International Telecommunication Union

### MISSING REFERENCE

However when is used function Relationship in Database Tool of Microsoft Access there is relationship between

field StID in Station Table and

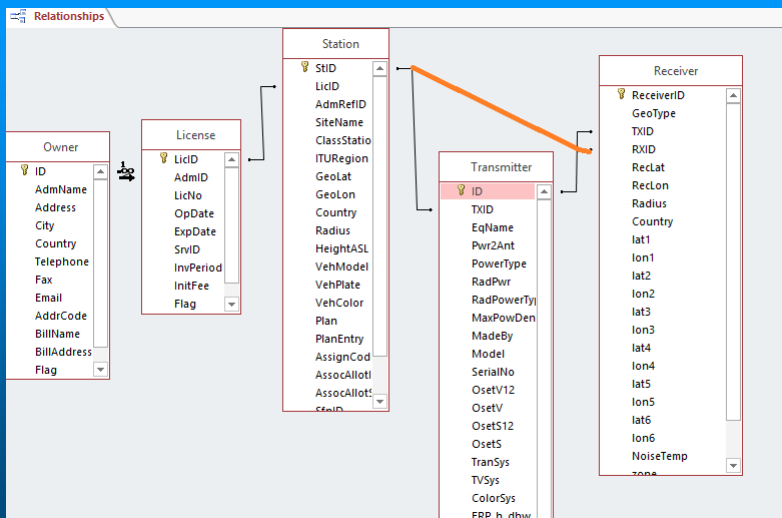
field RX in Receiver Table.

However this relation is not coded in DBManager.exe which is necessary for importing link data.

So, by this tool is not possible to import fixed link data.



## Tables



## ID GENERATION

A special problem is generation of following fields:

1. StID in Station Table
2. ID in Transmitter Table
3. ReceiverID in Receiver

The tool does not have code for automatic generation of this field in these three tables.



## **FILTERS**

Transmitter and Receiver Tables do not have reference to transmit and receive filter data.

So there is no possibility to use other SMS4DC function to calculate interference.



## **TYPICAL SCENARIO**

1. Operator should have a full feature export/import tool for SMS4DC. It can adjust output from their own tool (typically Pathloss or Atoll) and then import data in ImportTemplate.mdb
2. Once a year it sends this database to the spectrum regulator for recording purpose.
3. The DB Manager import function should have these features:
  - a) Generation of all unique ID – including SiteID.
  - b) During updating procedure it should check is the importng ID already existing in the databashe regulator shoudl have option to generate report of updated items.
  - c) Missing fields in the template should be included.



**International Telecommunication Union**

**THANK YOU**

**Mr. Srđan Mihaljević**  
**ITU Expert**

[srdjanITU@gmail.com](mailto:srdjanITU@gmail.com)

[http://www.itu.int/ITU-D/tech/spectrum\\_management/](http://www.itu.int/ITU-D/tech/spectrum_management/)