

Section 11. Part 2: International Mobile Roaming



ITU Tariff Policies Survey - results 2017

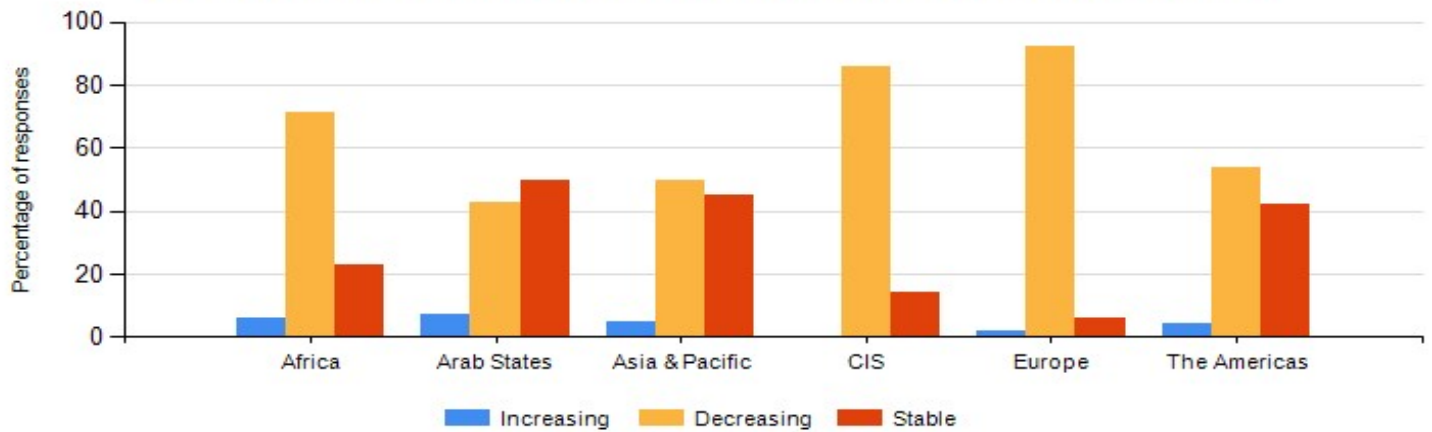
Summary

Indicator		Number of countries/economies						Total
		Africa	Arab States	Asia & Pacific	CIS	Europe	The Americas	
What is the general trend of the IMR RETAIL PRICE OF VOICE over the past three years in your country? *	Increasing	2	1	1	0	1	1	6
	Decreasing	22	6	11	6	33	13	91
	Stable	7	7	10	1	2	10	37
What is the general trend of the SMS IMR RETAIL PRICE over the past three years in your country? *	Increasing	5	0	1	0	0	2	8
	Decreasing	17	5	12	7	34	11	86
	Stable	9	8	11	0	2	8	38
What is the general trend of the DATA IMR RETAIL PRICE over the past three years in your country? *	Increasing	6	0	0	0	0	2	8
	Decreasing	12	8	16	7	34	15	92
	Stable	10	6	5	0	1	4	26
Are retail prices of IMR regulated in your country?	Yes	9	9	3	1	30	1	53
	No	20	4	17	6	6	18	71
If yes, what kind of regulatory practice is applied? *	Price Cap	7	6	1	1	25	2	42
	Ex ante obligations on operators designated as having significant market power (SMP)	1	0	0	0	0	0	1
	Benchmarking of tariffs	4	3	1	0	1	0	9
	Transparency measures (e.g. tariff or bill-shock information)	8	3	1	1	14	1	28
	Others	2	3	3	0	11	0	19
Is there regulation on the wholesale price of IMR in your country?	Yes	10	5	1	0	29	0	45
	No	22	5	17	7	5	20	76
Region size		44	21	40	12	43	35	195

Source: ITU World Tariff Policies Database

ITU ICT-Eye: <http://www.itu.int/icteye>

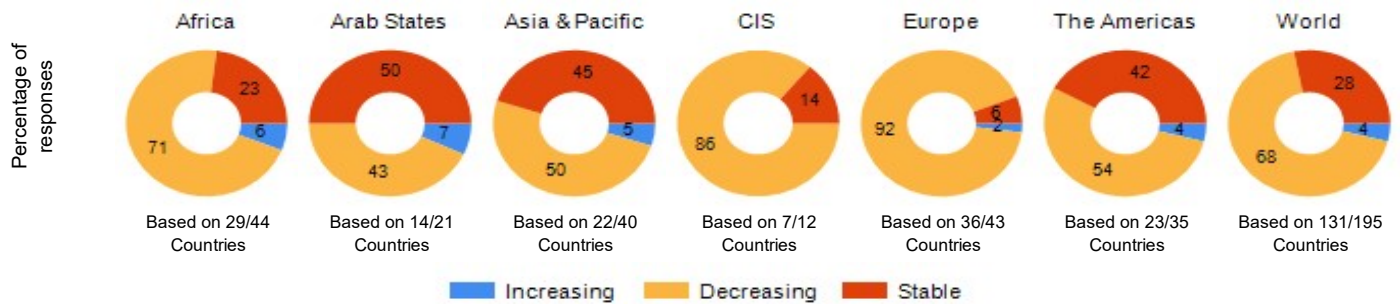
What is the general trend of the IMR RETAIL PRICE OF VOICE over the past three years in your country?, 2017



Source: ITU Tariff Policies Database

ITU ICT-Eye: <http://www.itu.int/icteye>

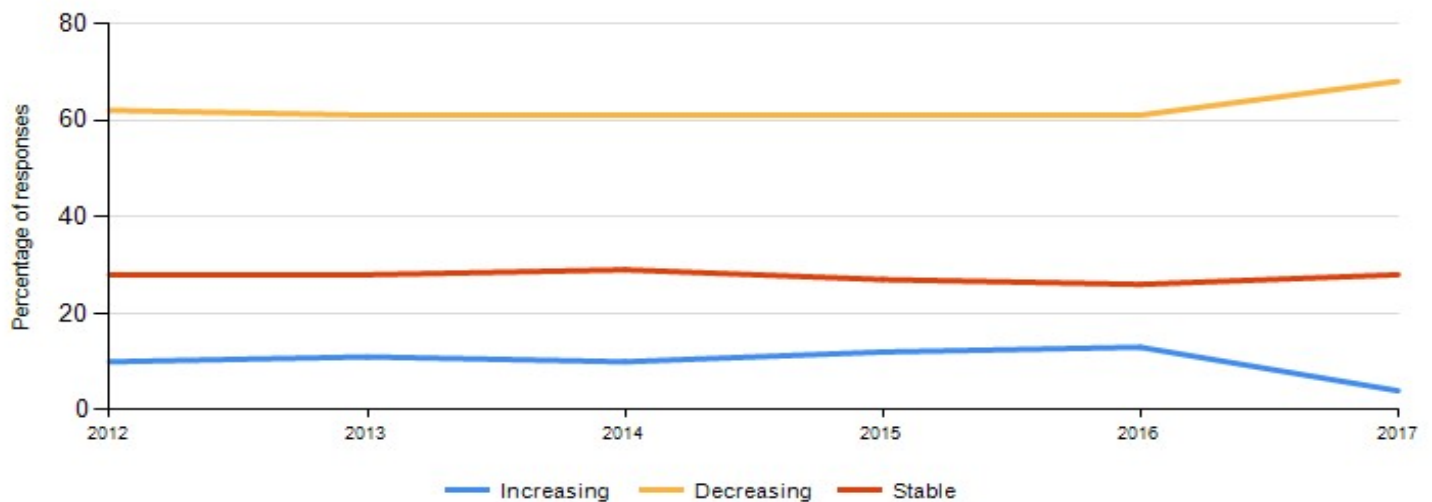
What is the general trend of the IMR RETAIL PRICE OF VOICE over the past three years in your country?, 2017



Source: ITU Tariff Policies Database

ITU ICT-Eye: <http://www.itu.int/icteye>

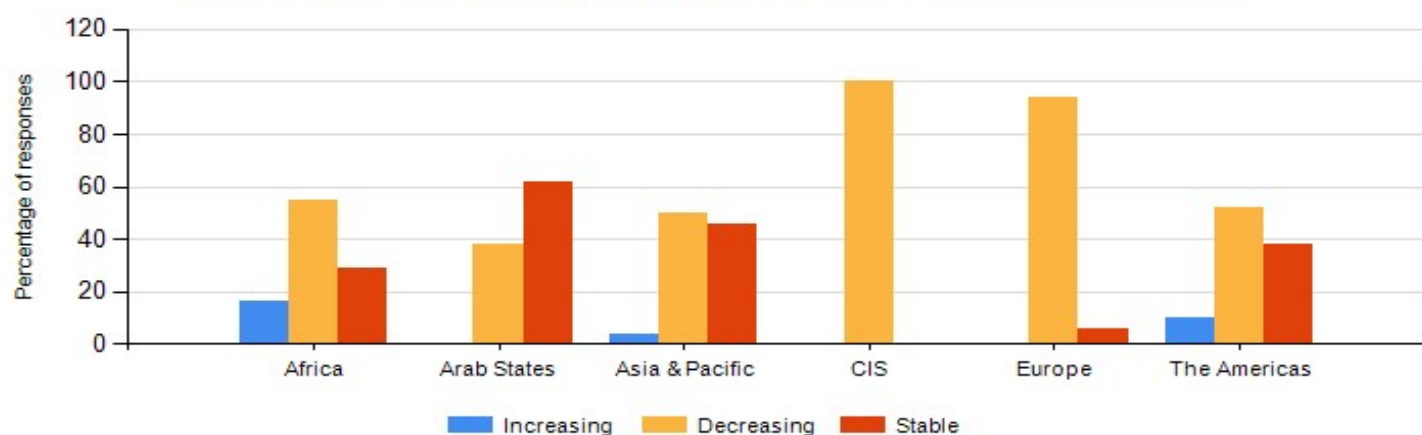
What is the general trend of the IMR RETAIL PRICE OF VOICE over the past three years in your country?, World



Source: ITU Tariff Policies Database

ITU ICT-Eye: <http://www.itu.int/icteye>

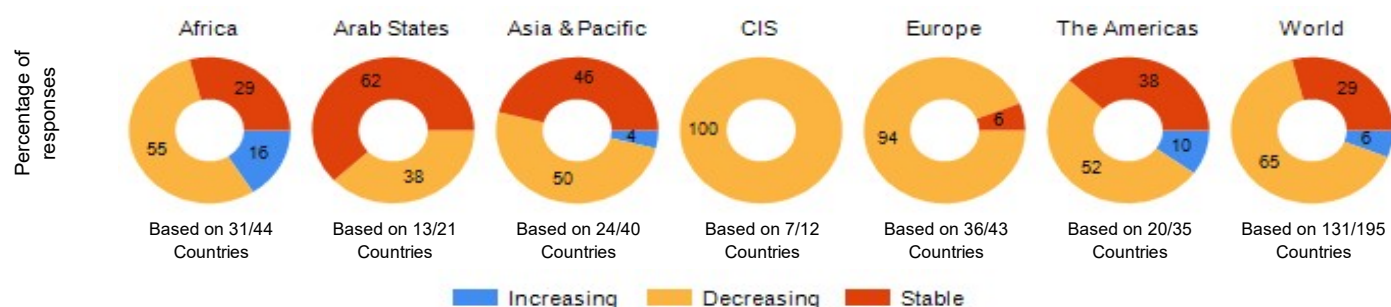
What is the general trend of the SMS IMR RETAIL PRICE over the past three years in your country?, 2017



Source: ITU Tariff Policies Database

ITU ICT-Eye: <http://www.itu.int/icteye>

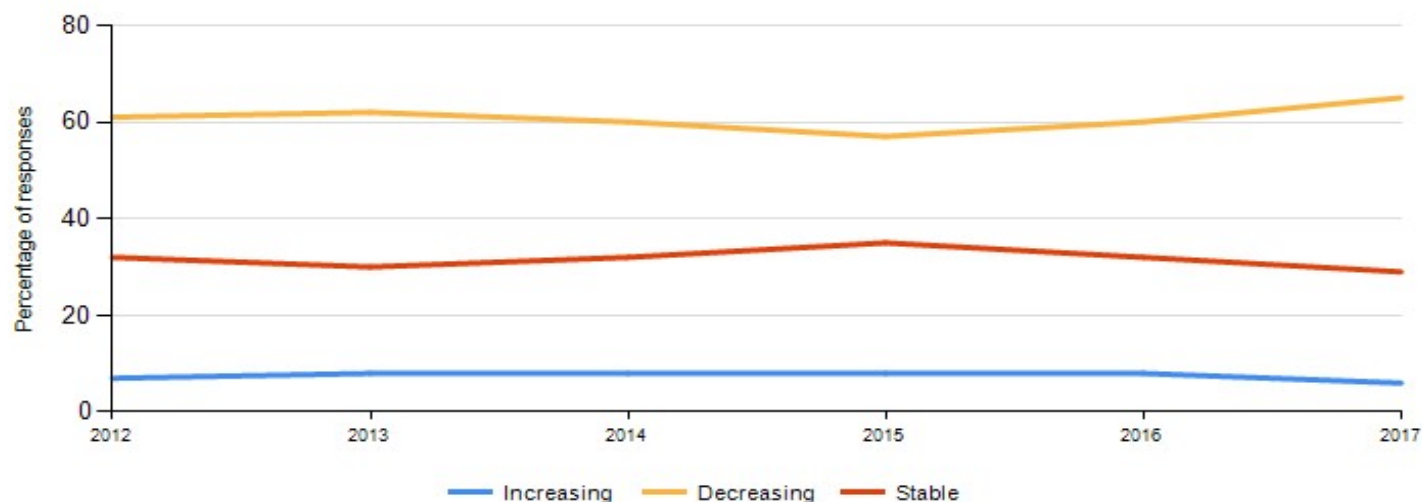
What is the general trend of the SMS IMR RETAIL PRICE over the past three years in your country?, 2017



Source: ITU Tariff Policies Database

ITU ICT-Eye: <http://www.itu.int/icteye>

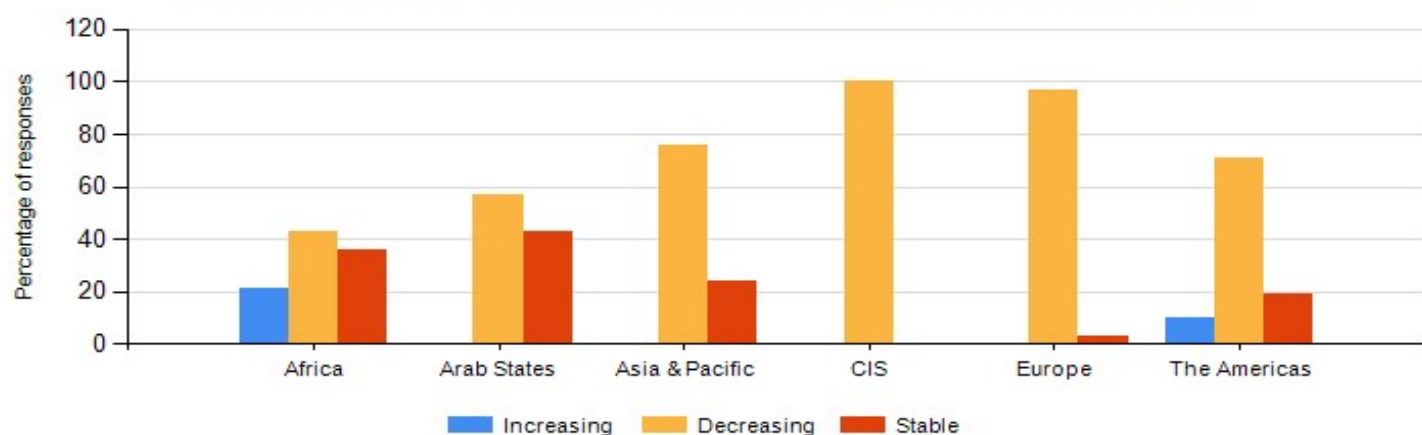
What is the general trend of the SMS IMR RETAIL PRICE over the past three years in your country?, World



Source: ITU Tariff Policies Database

ITU ICT-Eye: <http://www.itu.int/icteye>

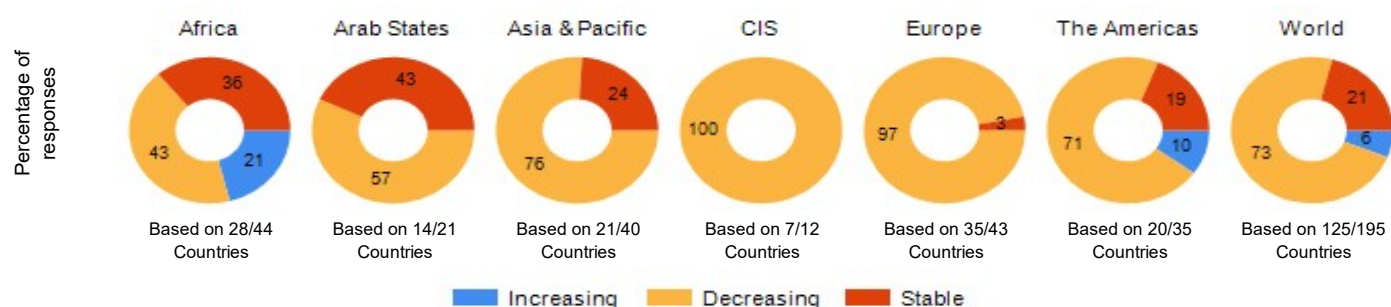
What is the general trend of the DATA IMR RETAIL PRICE over the past three years in your country?, 2017



Source: ITU Tariff Policies Database

ITU ICT-Eye: <http://www.itu.int/icteye>

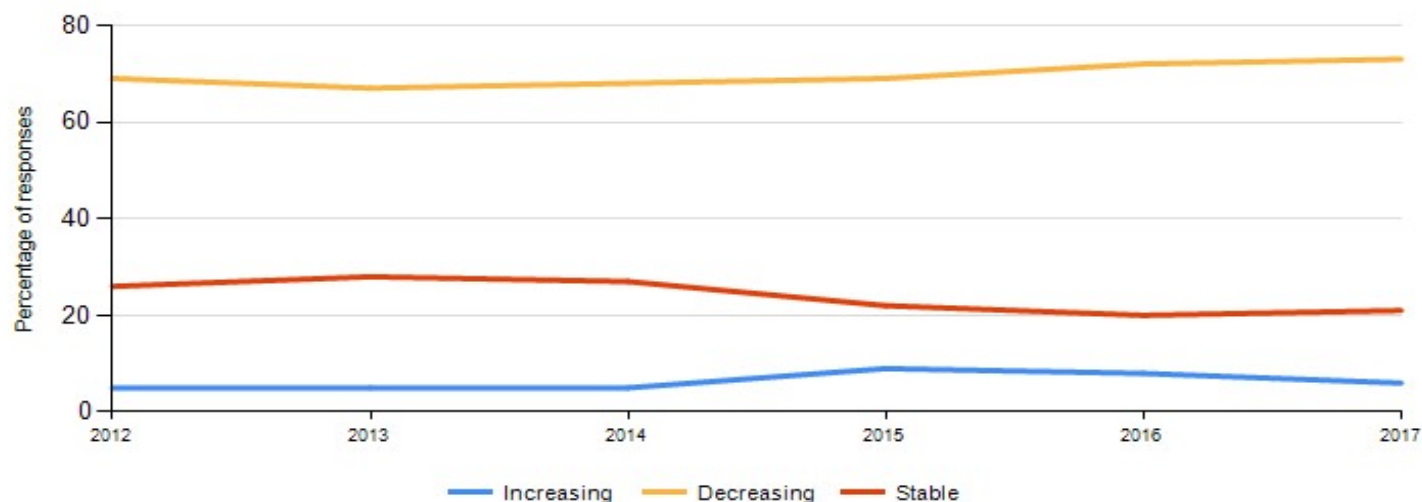
What is the general trend of the DATA IMR RETAIL PRICE over the past three years in your country?, 2017



Source: ITU Tariff Policies Database

ITU ICT-Eye: <http://www.itu.int/icteye>

What is the general trend of the DATA IMR RETAIL PRICE over the past three years in your country?, World



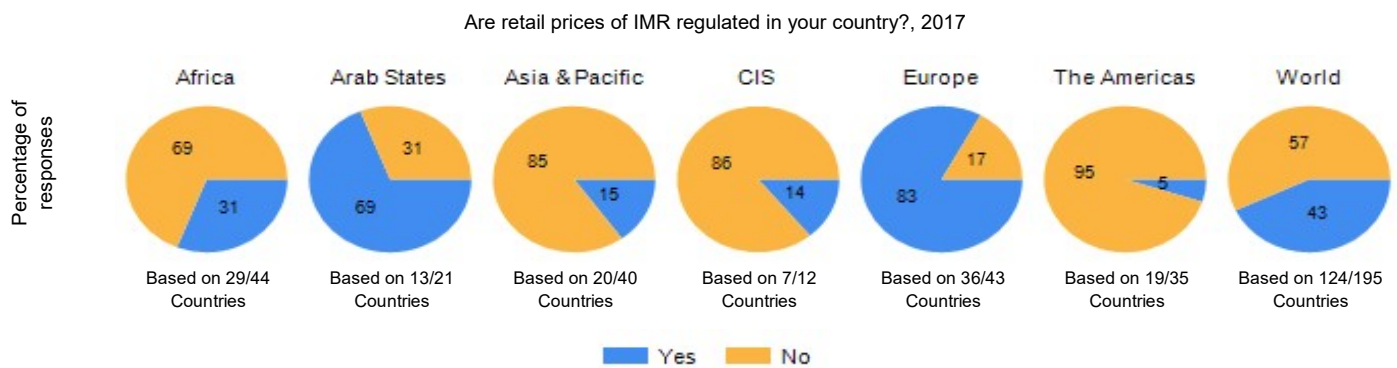
Source: ITU Tariff Policies Database

ITU ICT-Eye: <http://www.itu.int/icteye>



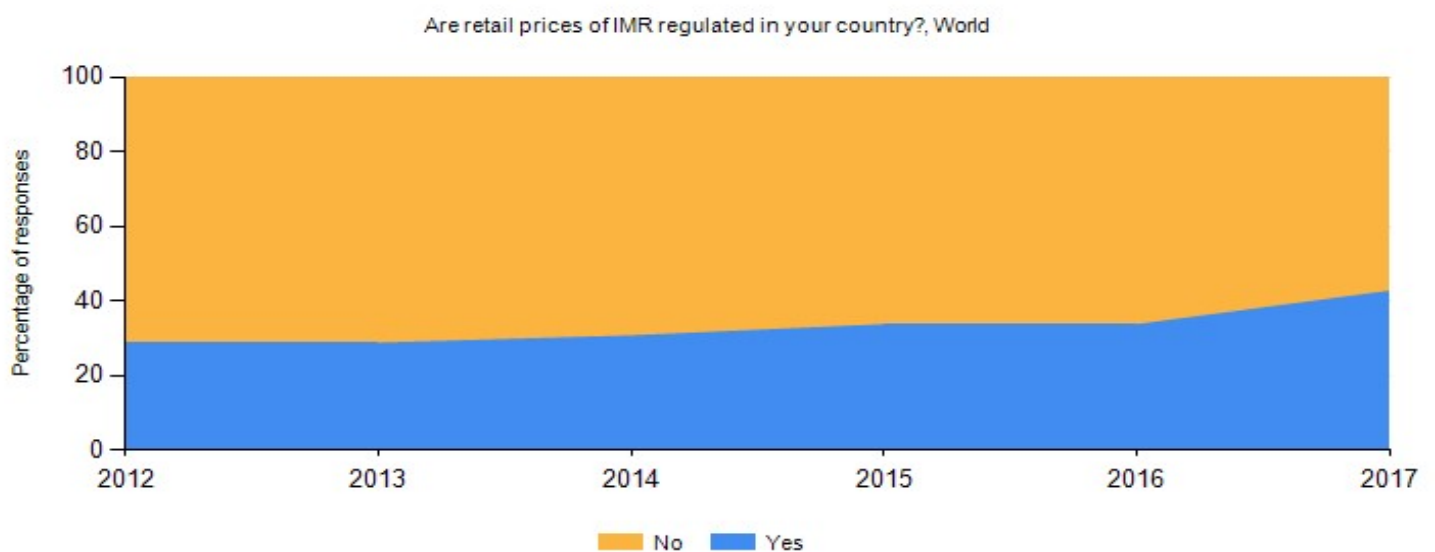
Source: ITU Tariff Policies Database

ITU ICT-Eye: <http://www.itu.int/icteye>



Source: ITU Tariff Policies Database

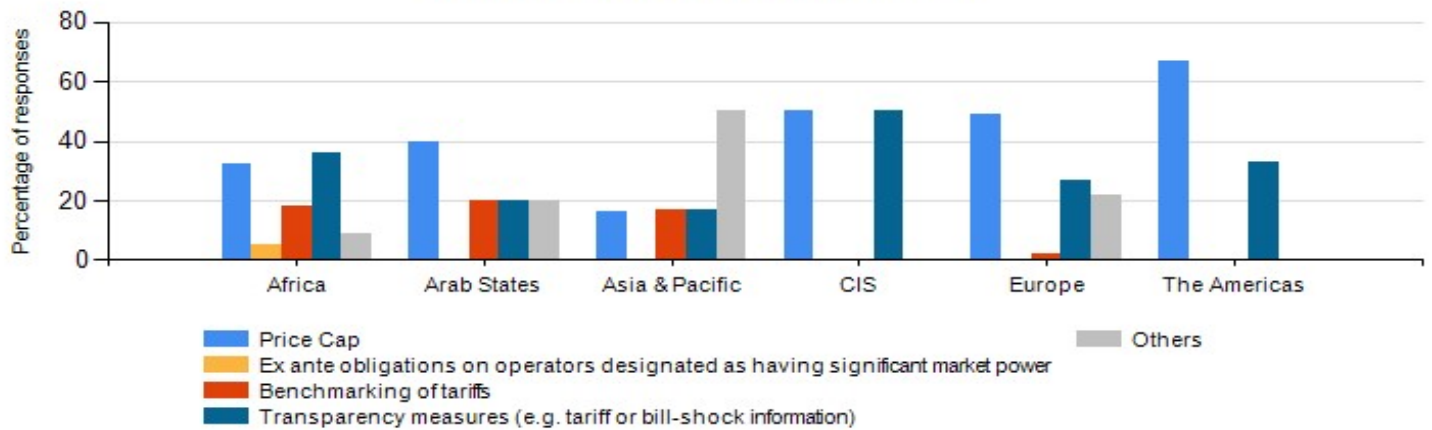
ITU ICT-Eye: <http://www.itu.int/icteye>



Source: ITU Tariff Policies Database

ITU ICT-Eye: <http://www.itu.int/icteye>

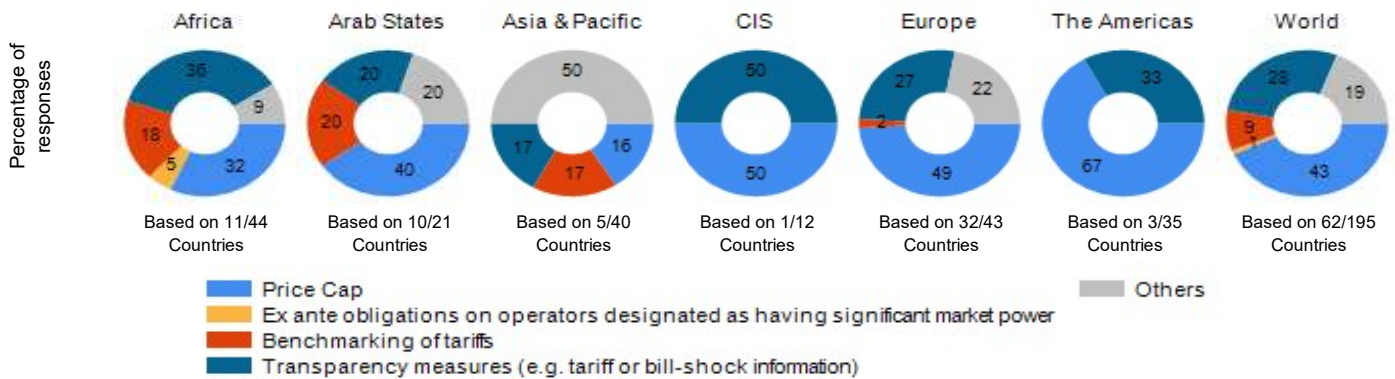
If yes, what kind of regulatory practice is applied?, 2017



Source: ITU Tariff Policies Database

ITU ICT-Eye: <http://www.itu.int/icteye>

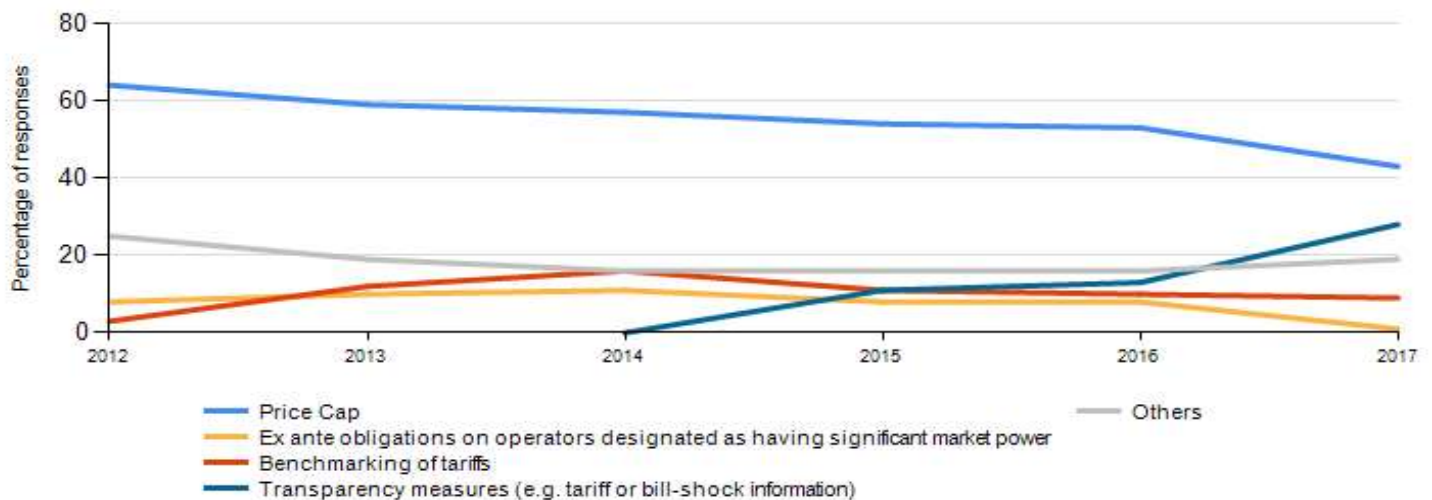
If yes, what kind of regulatory practice is applied?, 2017



Source: ITU Tariff Policies Database

ITU ICT-Eye: <http://www.itu.int/icteye>

If yes, what kind of regulatory practice is applied?, World



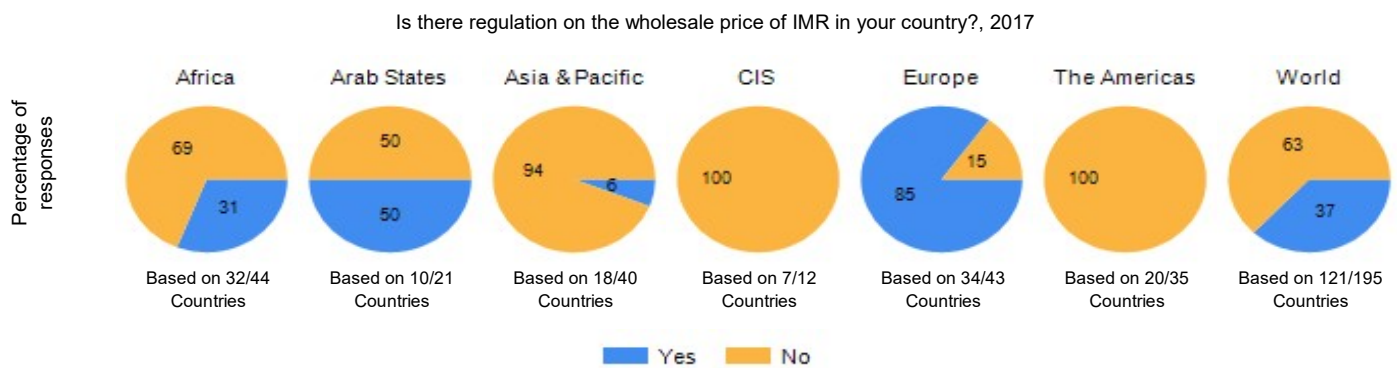
Source: ITU Tariff Policies Database

ITU ICT-Eye: <http://www.itu.int/icteye>



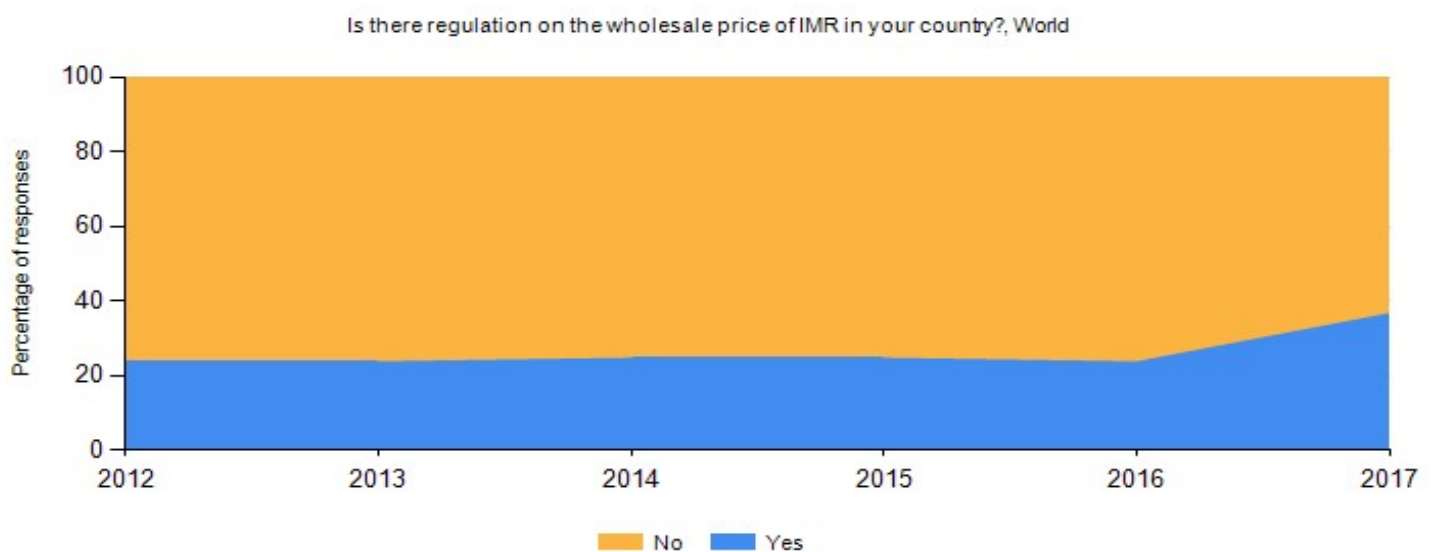
Source: ITU Tariff Policies Database

ITU ICT-Eye: <http://www.itu.int/icteye>



Source: ITU Tariff Policies Database

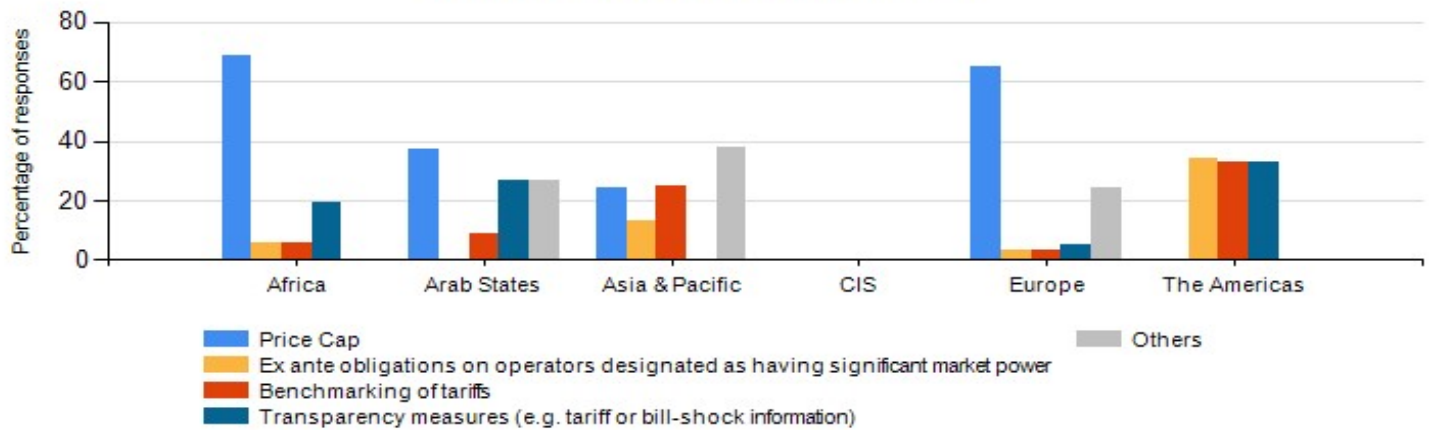
ITU ICT-Eye: <http://www.itu.int/icteye>



Source: ITU Tariff Policies Database

ITU ICT-Eye: <http://www.itu.int/icteye>

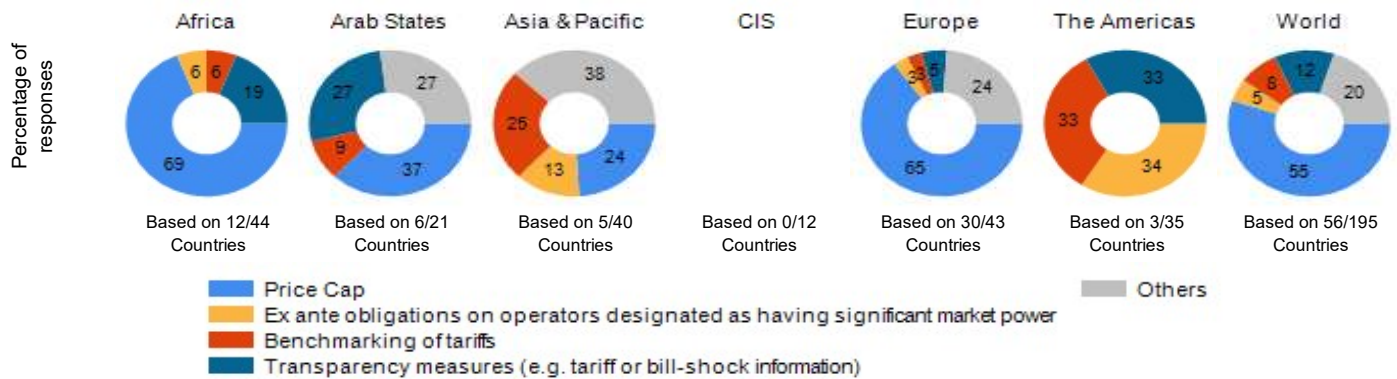
If yes, what kind of regulatory practice is applied?, 2017



Source: ITU Tariff Policies Database

ITU ICT-Eye: <http://www.itu.int/icteye>

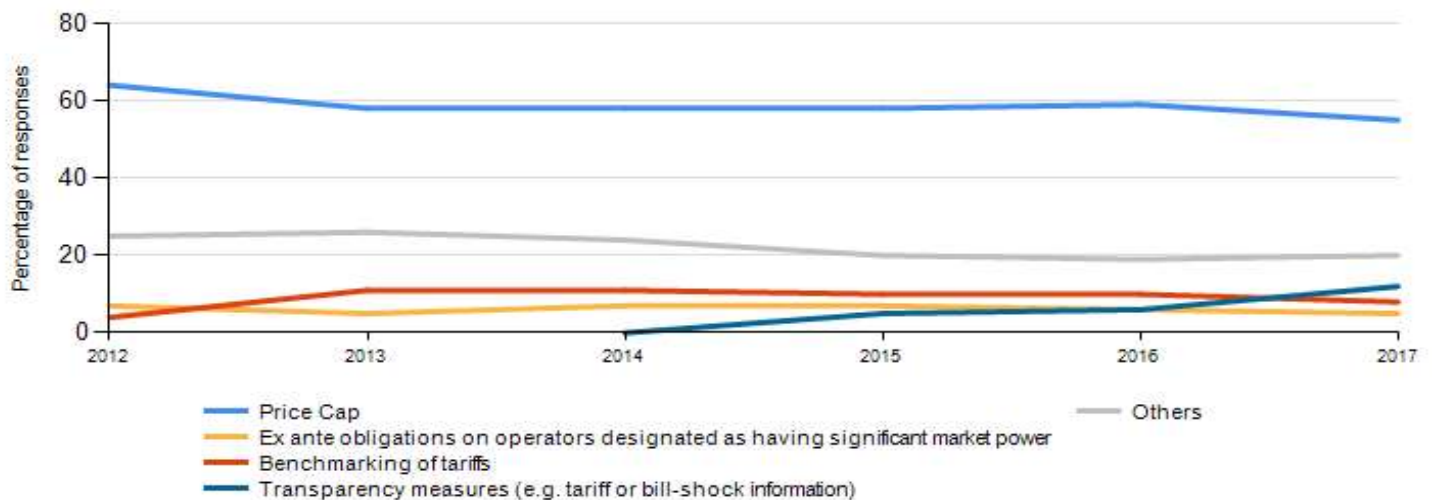
If yes, what kind of regulatory practice is applied?, 2017



Source: ITU Tariff Policies Database

ITU ICT-Eye: <http://www.itu.int/icteye>

If yes, what kind of regulatory practice is applied?, World



Source: ITU Tariff Policies Database

ITU ICT-Eye: <http://www.itu.int/icteye>