
Tools to be used for GE06 Agreement

Evghenii Sestacov



Committed to connecting the world



TerRaQ
TerRaNotices

GE06Calc

eBCD 2.0
Broadcasting Online

eQry **ePub**
eTools **myAdmin**

WISFAT

BRI FIC -Navigation Menu



Content of BR IFIC





Current BR IFIC Publication Content

These screens show the statistics of the notices in process published in each part and each fragment of the BR IFIC. The data is also grouped based on the notifying and concerned Administrations. Using these screens the users are able to

Current BRIFIC Number: 2743 **Publication Date: 30/04/2013**

RR 11 Publication No 2743
Information

Part I (5966) **Part II (1285)** **Part III (151)**
FM/TV (102) **LF/MF (2)** **FXM (5862)** **FM/TV (25)** **FXM (1260)** **FM/TV (1)** **FXM (150)**

FM/TV Special Sections

GE06 Special Section No 80
Deadline for the receipt of comments: 09/06/2013 14/07/2013
Information

Part A1 (383) **Part B1 (660)** **Part C1 (8)**
Part A2 (18)

LF/MF Special Sections (None)

FXM Special Sections (None)

Other Special Sections (None)

Active database: C:/BR_SOFT/TERRASYS/Data/BRIFIC_2743.db3

Current BRIFIC Number: 2743 **Publication Date: 30/04/2013**

This BRIFIC involves:
1197 Notices in the FM/TV domain **2 Notices in the LF/MF domain** **7272 Notices in the FXM domain**

The following table shows a summary of the statistics relating to this publication, based on the Notifying Administration and domain:

Notifying Administration	Total	FM/TV	LF/MF	FXM
ARG	10	0	0	10
AZE	8	8	0	0
BEL	15	0	0	15
BUL	95	10	0	85
CAN	3	0	0	3
D	6	6	0	0
DNK	3	3	0	0
E	5	5	0	0
EST	31	31	0	0
F	4683	0	0	4683
FIN	6	6	0	0
G	29	29	0	0
HOL	80	80	0	0
I	565	565	0	0

Notifying Administration	Total	FM/TV	LF/MF	FXM
IRN	283	0	0	283
J	6	0	0	6
KAZ	108	108	0	0
MDA	2	0	0	2
MLT	2	0	0	2
MRC	5	5	0	0
NGR	2	2	0	0
RUS	2451	288	0	2163
S	13	13	0	0
SUI	2	2	0	0
TKM	7	7	0	0
TUN	20	0	0	20
UKR	29	29	0	0
USA	2	0	2	0

Active database: C:/BR_SOFT/TERRASYS/Data/BRIFIC_2743.db3

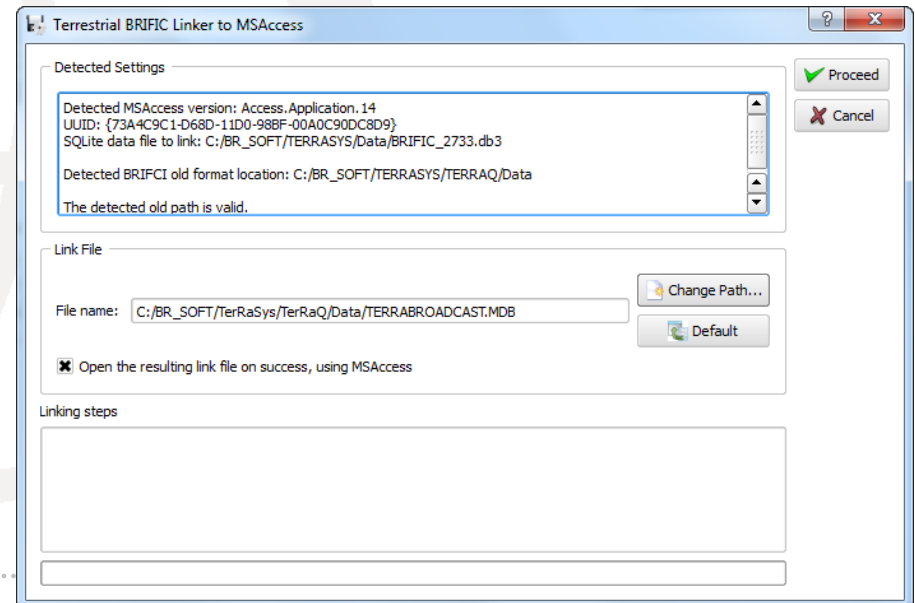
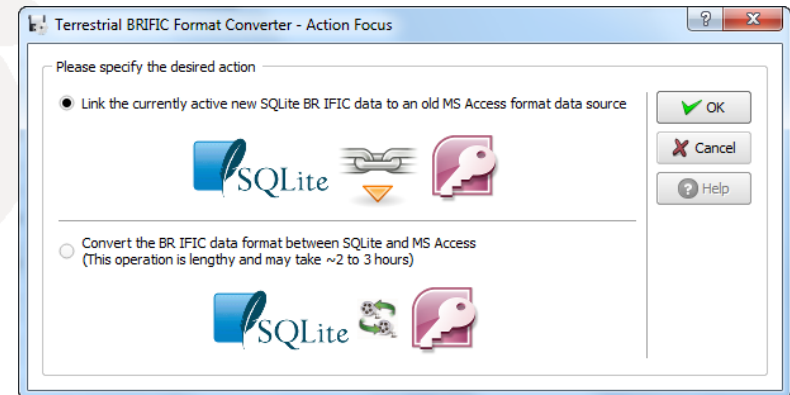
Terrestrial BR IFIC Format Converter:

TerRaQ "external Tools" menu item

In order to enable existing **GE06Calc** (MS Access) to access the data in the BR IFIC database (SQLite), a format converter is also provided.


This application is able to provide a quick Microsoft Access "**bridge**" to access the data stored in SQLite format.



See "[How to run GE06Calc with the new BRIFIC.pdf](#)"






Access to the Portal

<http://www.itu.int/ITU-R/eBCD/eQry.aspx>

International
Telecommunication
Union



عربي | 中文 | Español | Français | Русский

Advanced Search |  |  | 

Home : [ITU-R](#) : [Terrestrial Services](#) : Broadcasting

Google™ Custom Search

Broadcasting Services

[Our Bands](#)

[MIFR](#)

[Plans](#)

[HFBC](#)

[Forum](#)

[FAQ](#)

[On-line services/Software](#)

[Reference documents](#)

[ITU Sectors](#) | [Newsroom](#) | [Events](#) | [Publications](#) | [Statistics](#) | [About ITU](#)

Broadcasting Services Division

Broadcasting Services Division (BCD) examines notices and submissions for frequency assignments concerning television and sound broadcasting terrestrial services in all broadcasting bands (LF, MF, HF, VHF and UHF) and provides assistance to administrations with respect to the technical, regulatory and administrative procedures applicable to the planning of terrestrial broadcasting services.

Its main activities include:

- Examining proposed modifications to the frequency Plans with respect to their impact on other administrations in accordance with the procedures specified in the Regional Agreements.
- Examining proposed notifications for recording in the Master International Frequency Register (MIFR) in accordance with the Radio Regulations and associated Regional Agreements.
- Examining the compatibility analysis for HF broadcasting requirements submitted for inclusion in the seasonal schedules in accordance with Article 12 of the Radio Regulations.
- Providing assistance and training to administrations in the application of relevant provisions of the Radio Regulations and Regional Agreements.
- Developing technical software that assist administrations in the planning and coordinating of terrestrial broadcasting services.

Contact: brbcd@itu.int

In focus!

GE 06
Frequency coordination
for Sub-Saharan Africa

[Sub-Sahara GE06 Frequency
Coordination Meetings](#)

Broadcasting Databases

eBCD

Broadcasting data only a few
clicks away!

Coming events

■ 17-19 July 2013, Nairobi,
Kenya.
[2nd and Final GE06 Frequency
Coordination Meeting for Sub-
Saharan African countries](#)

■ 26-30 August 2013,
Bratislava, Slovakia.
[B13 Season HFCC/ASBU
Frequency Coordination
Conference](#)

eBCD : Overview

myAdmin

"My own office
@ ITU: opening ~24/7"

BR DB

Daily copy

eTools

"My test calculations
on-demand"

BR DB

Weekly copy

ePub

"Special Sections,
the publication day!"

BR DB

Snapshot

eQry

"Fast search
on Plans and MIFR"

BR DB

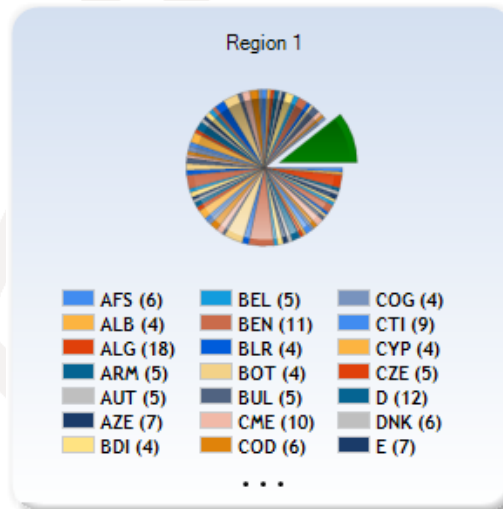
Daily copy

Current statistics

Region 1

822 Users

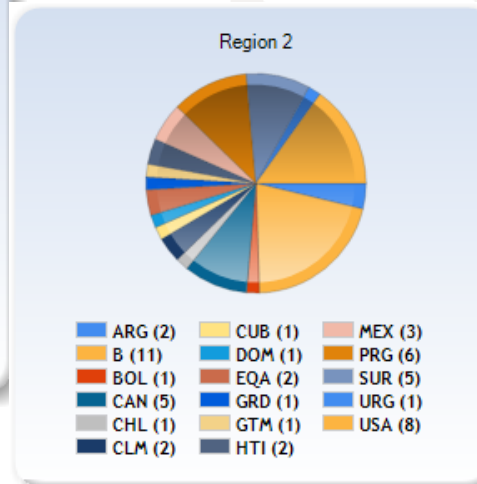
116 Member States



Region 2

67 Users

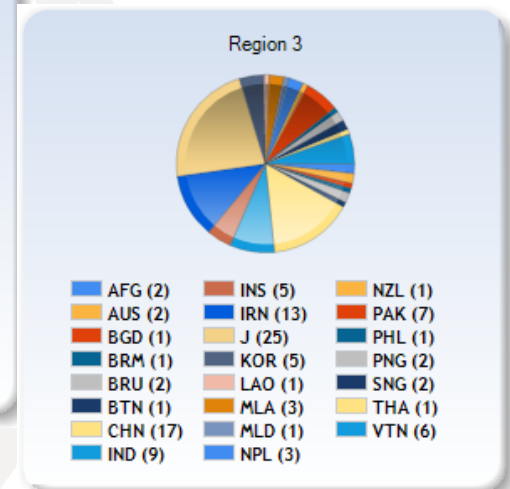
21 Member States



Region 3

148 Users

23 Member States



Requirements and Tips



TIES users 



myAdmin

TIES users 
BCD authorization required

Tips:

- Check yourTIESaccount@itu.int for eBCD 2.0 e-communications
- You can set Email Forwarding to your work account from [here](#)

“Online search
on Plans and MIFR”

eQry

Read-Only copy of BR
Database (Updated daily)

GE06 ST61 GE75 MIFR
GE89 RJ81 (FMTV)
GE84
GE06L



Search by:

Administration

Geographic Area

Frequency

Date of Receipt

Administration

BR Identification

Unique Identifier

Number

Status

(Recorded/Published)

“Special Sections,
the publication day!”

ePub

Database Snapshots
at publication date

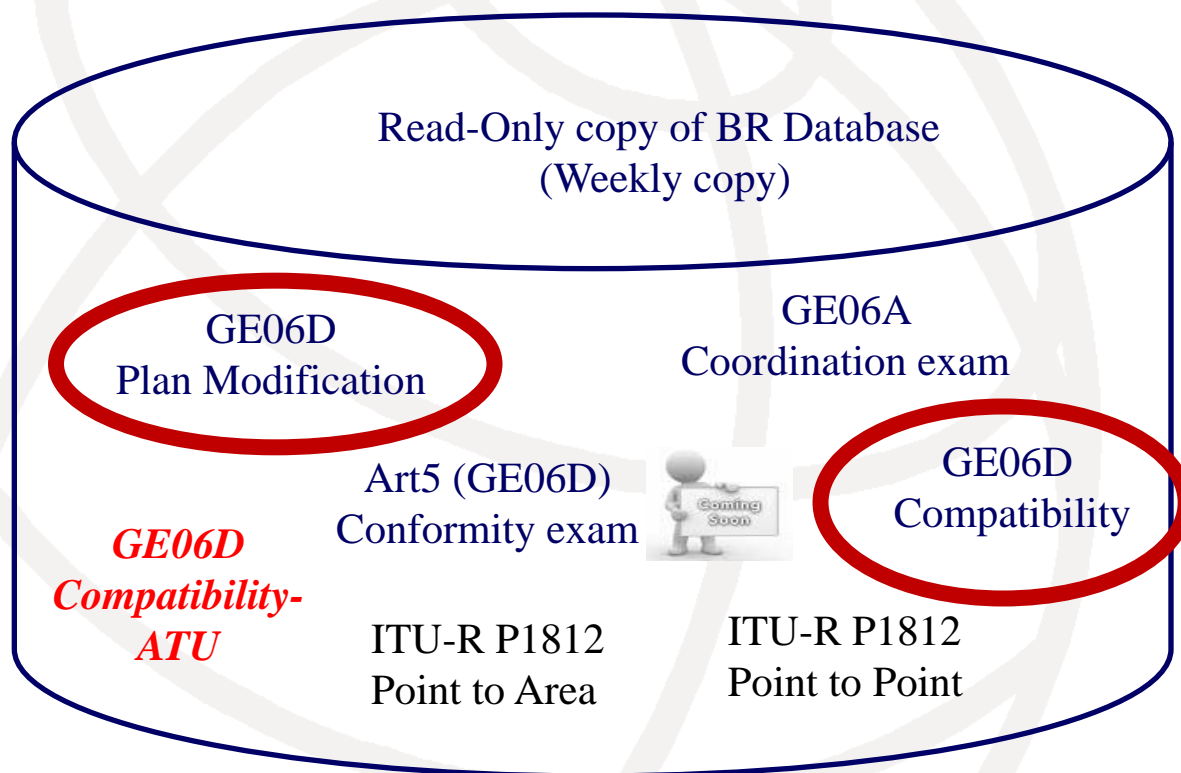
GE06 ST61 GE75 MIFR
GE89 RJ81 (FMTV)
GE84
GE06L HF



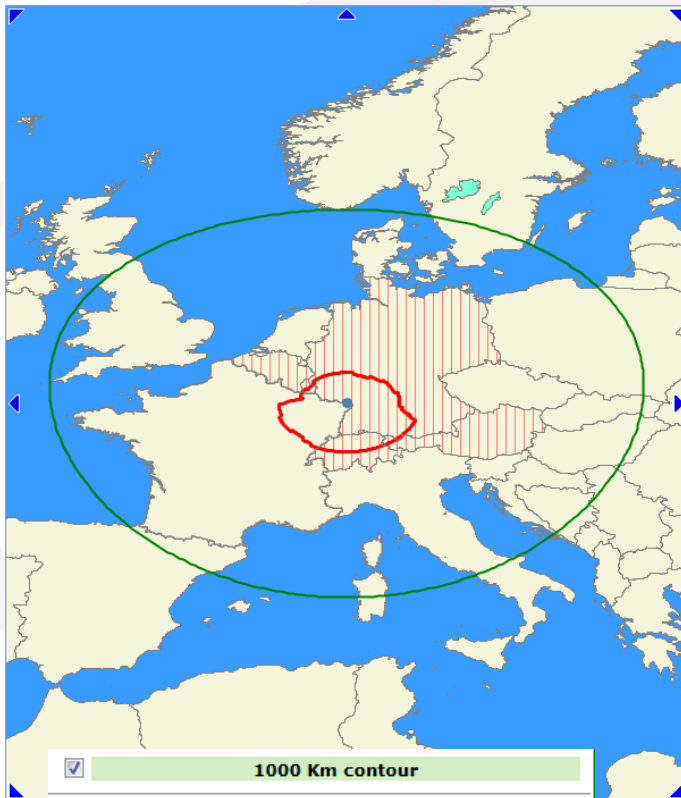
- Search by BR IFIC
- Search by Administration
 - My notifications
 - Notifications which affects me

“On-demand test
calculations”

eTools



GE06D - Modification of the Plan



☒ 1000 Km contour

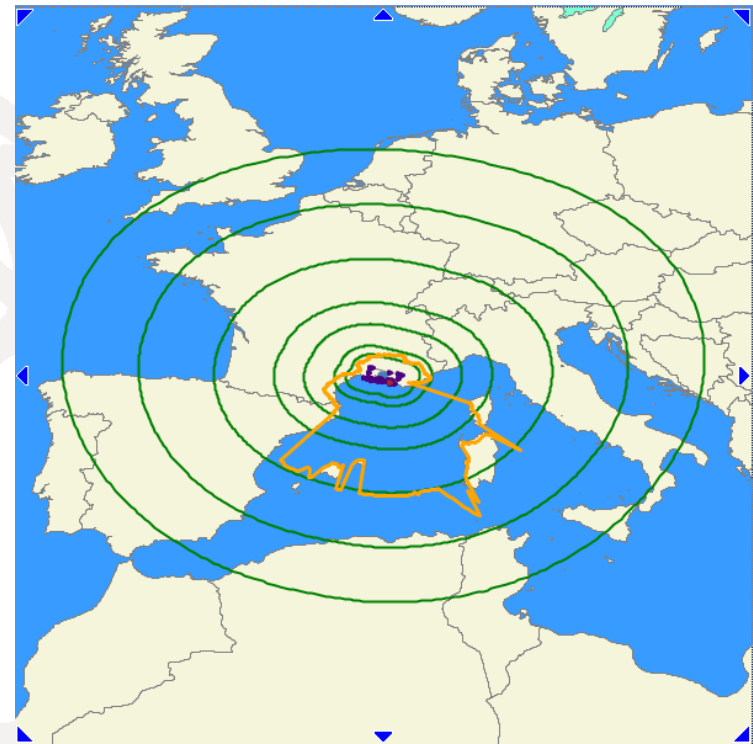
Administration within 1000 Km contour

AND	AUT	BEL	BIH	CVA	CZE	D	DNK
E	G	HNG	HOL	HRV	I	LIE	LUX
MCO	NOR	POL	ROU	S	SMR	SRB	SUI

☒ **Broadcasting Coordination Contour**
Trigger FS (dB(μV/m)): 23
Rx Antenna Height (m) 10

Affected Administrations

AUT	BEL	D	LIE	LUX
SUI				



☒ **Geometrical Contours**

☒ 1000 km ☒ 750 km ☒ 500 km ☒ 300 km
☒ 200 km ☒ 100 km ☒ 60 km

☒ **BC cut-off field strength contour**
Trigger FS (dB(μV/m)): 25
Rx Antenna Height (m) 10

eTools-GE06D Plan modification

eCalculations - Windows Internet Explorer

File Edit View Favorites Tools Help

http://www.itu.int/ITU-R/eBCD/MemberPages/eCalculations.aspx

Search

Job details

Adm	E-notice file	Number of Notices
UGA	UgandaG06_revised_2.txt	172

GE06D

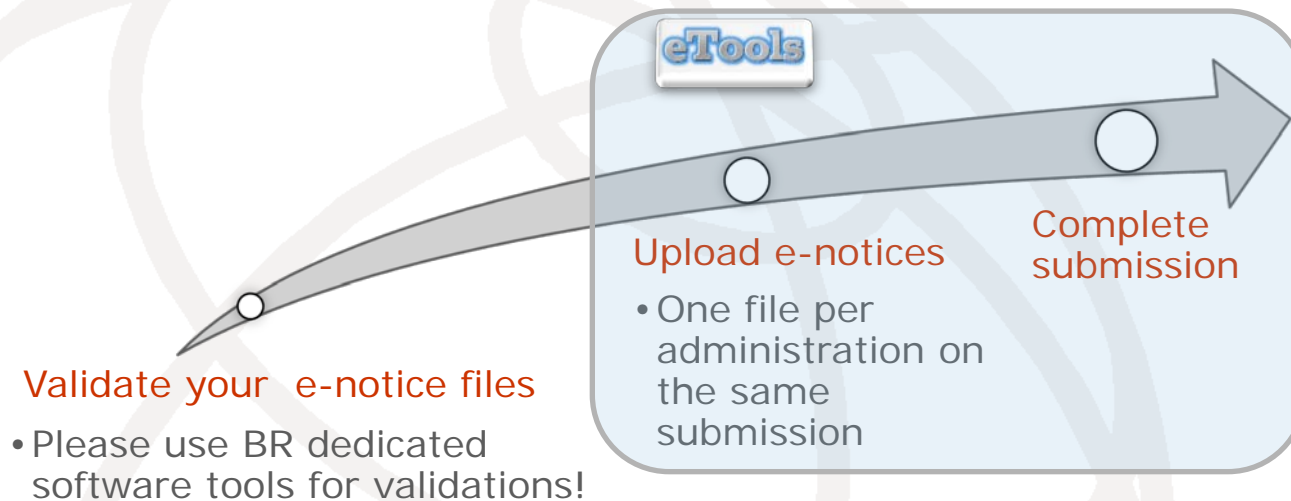
Export to Excel Google Earth

Total number of records 172. Click on headers to sort

<u>Adm Id</u>	<u>BR Id</u>	<u>Adm</u>	<u>Intent</u>	<u>PE</u>	<u>Site/Allot Name</u>	<u>TV Channel/Freq Block</u>	<u>Coord Completed</u>	<u>Objection By</u>	<u>Missing Coordination</u>
UGA0205TU01	170	UGA	MODIFY	1	ADJUMANI	24			COD SSD
UGA0205TU04	11	UGA	MODIFY	1	ADJUMANI	40			COD SSD
UGA0404TU02	105	UGA	MODIFY	1	APAC	32			COD
UGA0404TU04	106	UGA	MODIFY	1	APAC	28			COD
UGA0105TU01	14	UGA	MODIFY	1	ARUA	38			COD SSD
UGA0105TU03	36	UGA	MODIFY	1	ARUA	32			COD SSD
UGA0105TU04	26	UGA	MODIFY	1	ARUA	28			COD SSD
UGA0105TU05NEW	136	UGA	ADD	1	ARUA	34			COD SSD
UGA0907TU04	46	UGA	MODIFY	1	BOMBO	39			KEN TZA
UGA0906TU01	84	UGA	MODIFY	1	BUCIPI	25			KEN

Agreements to be provided: COD, SSD

eTools: e-notice submission



The ITU distributed processing infrastructure will treat your test submission and inform you at completion!



Check your TIES account!

yourTIESname@ties.itu.int

eTools: job processing



[New Submission](#)

The following package has been submitted

Job summary

Submitter	manara
Job Name	test_0
Job Type	Art4_PlanModification
Job Identifier	1451
Job Status	Pending Cancel job Share

Job summary

Submitter	manara
Job Name	test_0
Job Type	Art4_PlanModification
Job Identifier	1451
Job Status	Success Delete Share
Calculation Results	View

Compatibility Analyses

Interference calculations between new notices (from electronic notification files) and existing plan notices and recorded assignments/allotments

☒ Test Packages 5791: click to show all

Job summary

Submitter	manara
Job Name	testCompat
Job Type	Art4_Compatibility_Serv
Job Identifier	5791
Job Status	Success
Delete Share	
Download results	

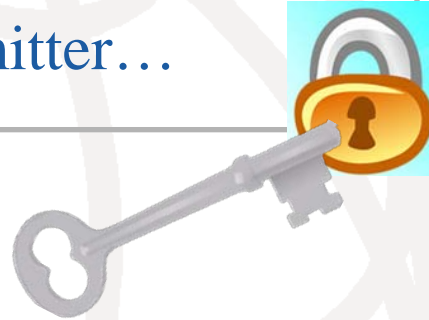
Job details

Adm	E-notice file	Number of Notices
GHA	GHA.txt	5
MLI	MLI.txt	5
ZMB	ZMB.txt	5

Results is an MS Access mdb file for download to be visualized with GE06Calc.

eTools: privacy & job sharing

Jobs (e-notice and results) are owned and visible ONLY by submitter...



...you can now share them with other eBCD registered users!



.....
"My own office
@ ITU: opening ~24/7"

myAdmin

My Mail Box

Communication between the BR and the Member State:

Ex: Plan notices not yet published (for specific cases)
→GE06D notices under Conformity Review (30 days)

.....
"My own office
@ ITU: opening ~24/7"

myAdmin

My Plan Statistics

Plan notices and
assignments
submitted by my
Administration

Plan notices in
coordination
which affect my
Administration

My MIFR Statistics

MIFR assignments
and notices (part 1,
2, 2B, 3) submitted
by my
Administration

.....
"My own office
@ ITU: opening ~24/7"

myAdmin

My Profile: services subscription

Send me an E-mail when
new Special Sections
containing my notifications
or notifications affecting me
are available on the web

> 800 subscribers

Send me an E-mail when
Coordination/Objection
for my notices enters the
database

> 700 subscribers

GE06 Calc

- PC-based application for unofficial examinations to the GE06 Digital Plan
- Web-based installation from:
ITU-R->Terrestrial->Broadcasting->Software->GE06Calc

<http://www.itu.int/ITU-R/terrestrial/broadcast/software/ge06calc/>

GE06 Calc - Installation

- Automatic updates (checking for updates is performed only if and when the application is started)
- **Required:** BRIFIC (Terrestrial) DVD applications and database

Important

- GE06 Calc is intended to be an easy-to-use tool for administrations to unofficially examine the conformity of notices with respect to the GE06 Plan before sending them to the BR.
- To be able to benefit from GE06 Calc features, please **first install the BRIFIC** (Terrestrial) DVD applications and database on your PC. Examinations will be performed taking into account the GE06 Plan and MIFR data on the BRIFIC DVD.
- Please make sure that the notice files to be examined for conformity or compatibility analysis have been **validated** by software tools such as the TerRaNV, before opening such files in GE06 Calc.

GE06 Calc - Features

- *run conformity examination in case of conversion of an allotment into assignments.*
- *read the results file created through the use of the 'compatibility analysis tool' of the Web application eBCD. (coordination information/agreement taken into account)*

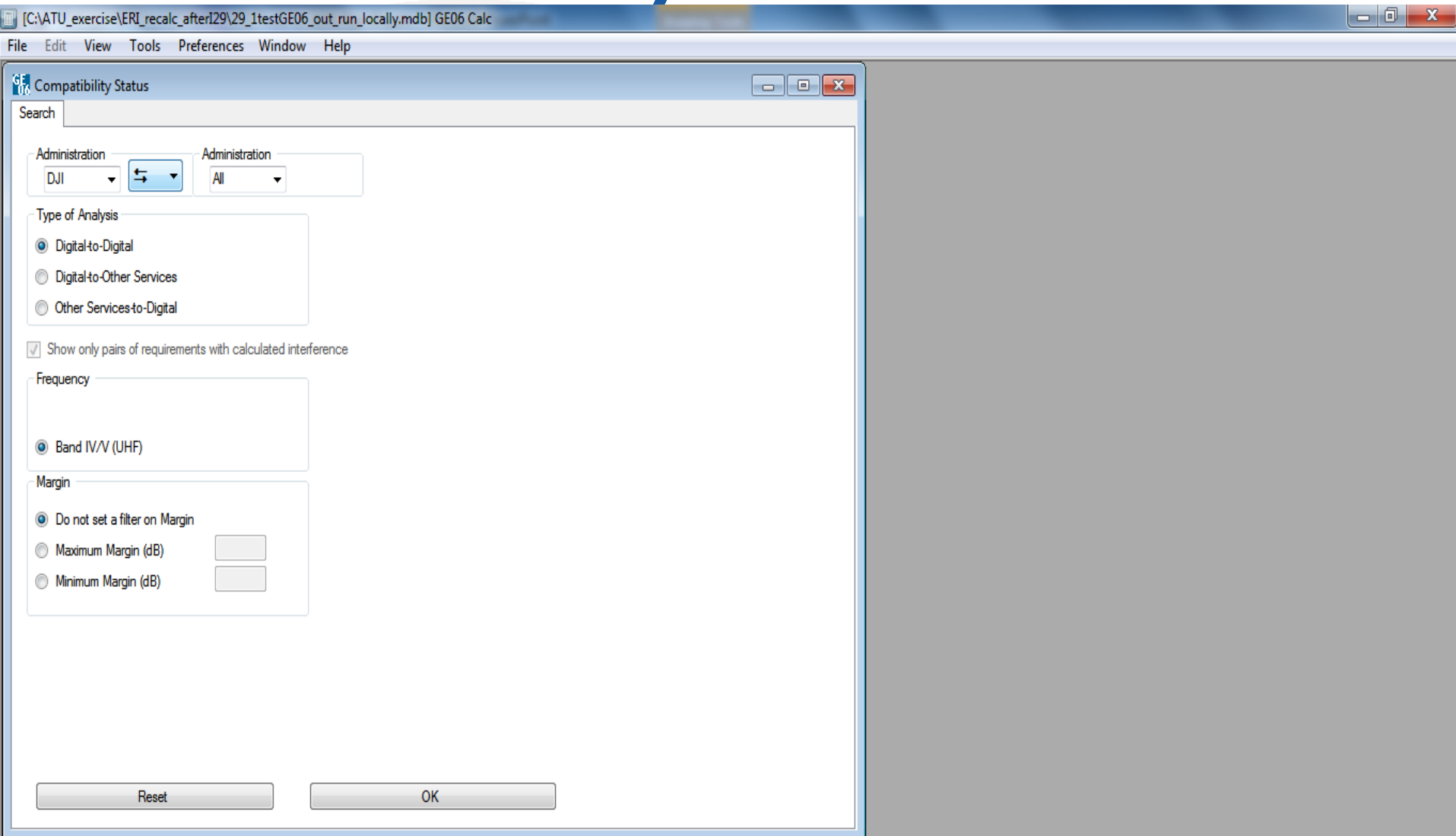
GE06 Calc – Usage for conformity examination

1. Open notice file and review the identified groups of notices
2. Select option for conformity examination (quick or complete)
3. Run conformity examination and analyse the findings

GE06 Calc – Usage to read the compatibility analysis

1. Open compatibility analysis file (saved from eTools)
2. Select option to read the results
3. Analyse the results, reduce incompatibilities and coordinate.

Reading a compatibility analysis file



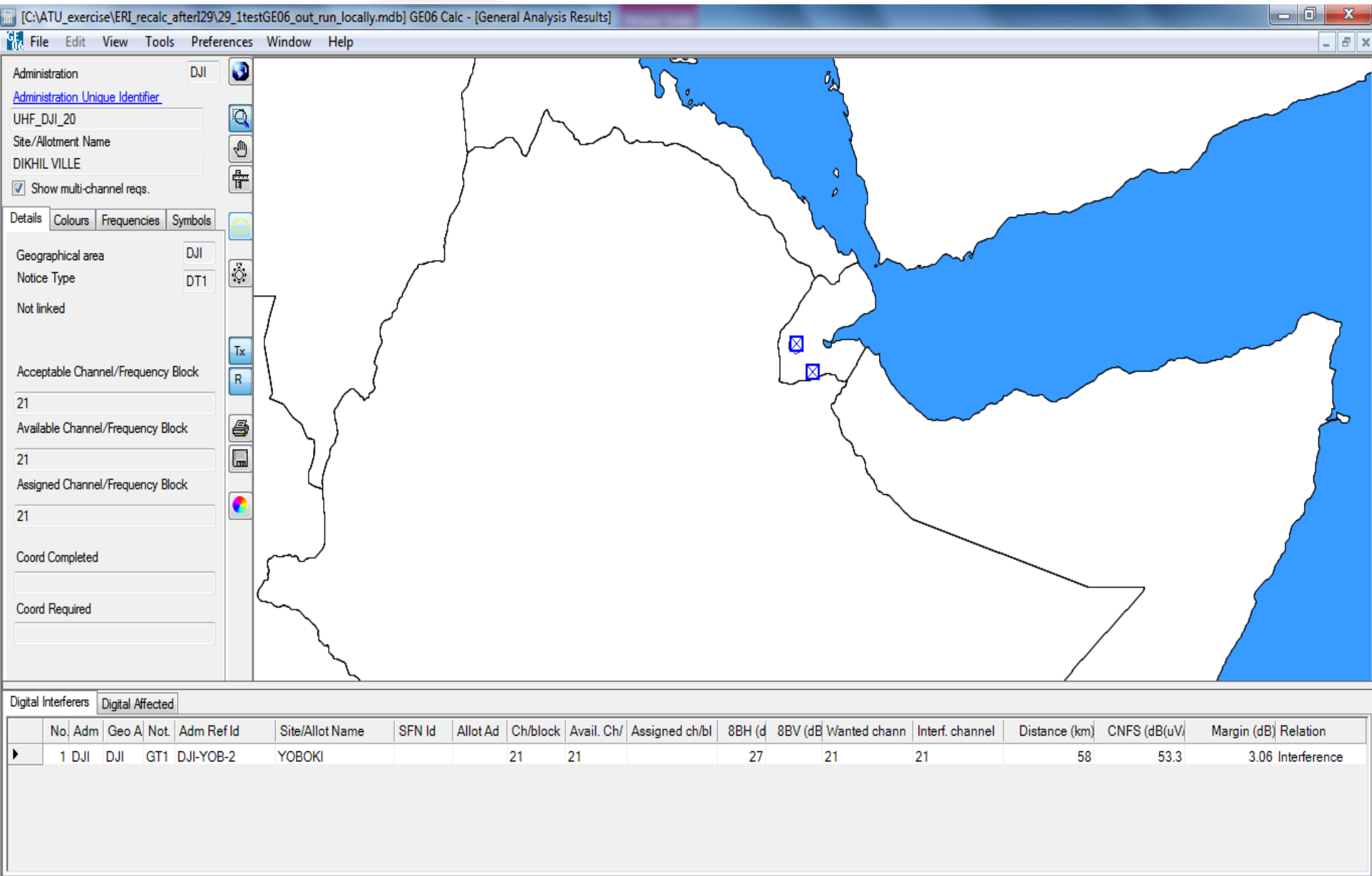
Compatibility results

[C:\ATU_exercise\ERI_recalc_after129\29_1testGE06_out_run_locally.mdb] GE06 Calc - [Selected Compatibility Status]

	Id	Aff A	Aff G	Aff	Aff AdmRefId	Aff Site/Allot Nam	Aff SFN Id	Aff Allot	Aff Ac	Aff Ch	Int Ad	Int G	Int N	Int AdmRefId	Int Site/Allot Nam	Int SFN	Int Allot A	Int Ac	Int C	8BH	8BV	(Dista	CNFS (d	Margi	Relation
▶	1	DJI	DJI	DT1	UHF_DJI_13	ALI SABIEH			47	47	ETH	ETH	GT1	BR1_SO24 21	JIJIGA			47	47	43.9	216.	55.3	2.52	Interfere	
	2	DJI	DJI	DT1	DJI_24	DIKHIL RELAIS			25	25	ETH	ETH	GT1	BR1_SO18 12	GODE			25	25	44	241.	59.6	6.79	Interfere	
	3	DJI	DJI	DT1	UHF_DJI_4	DIKHIL RELAIS			27	27	ETH	ETH	GT1	BR1_SO18 13	GODE			27	27	44	246.	58.9	6.04	Interfere	
	4	DJI	DJI	DT1	UHF_DJI_3	DIKHIL RELAIS			40	40	ETH	ETH	GT1	BR1_SO18 14	GODE			40	40	44	244.	58.2	4.45	Interfere	
	5	DJI	DJI	DT1	UHF_DJI_20	DIKHIL VILLE			21	21	DJI	DJI	GT1	DJI-YOB-2	YOBOKI			21	21	27	58	53.3	3.06	Interfere	
	6	DJI	DJI	DT1	UHF_DJI_26	DJIBOUTI VILLE			44	44	SOM	SOM	GT1	BR1_DT113079	ALULA			44	44	46	885.	56.3	3.13	Interfere	
	7	DJI	DJI	DT1	UHF_DJI_28	DJIBOUTI VILLE			48	48	SOM	SOM	GT1	BR1_DT113079	HARGEISA			48	48	46	281.	56.8	3.15	Interfere	
	8	ERI	ERI	GT1	BR3_ERI140002	EDITV			43	43	DJI	DJI	DT1	DJI_33	RANDA			43	43	37	266.	52.8	1.7	Interfere	
	9	DJI	DJI	GT1	DJI-YOB-2	YOBOKI			21	21	DJI	DJI	DT1	UHF_DJI_31	ARTA			21	21	30	94.7	63.4	10.58	Interfere	
	10	DJI	DJI	GT1	DJI-YOB-2	YOBOKI			21	21	DJI	DJI	DT1	UHF_DJI_20	DIKHIL VILLE			21	21	24	57.2	50.4	1.83	Interfere	
	11	DJI	DJI	GT1	DJI-YOB-1	YOBOKI			28	28	YEM	YEM	DT1	RTVPLAN-0097	J. ARROUS			28	28	43	317.	52.9	2.42	Interfere	
	12	DJI	DJI	GT1	DJI-YOB-3	YOBOKI			44	44	DJI	DJI	DT1	UHF_DJI_33	DJIBOUTI VILLE			44	44	37	108.	57.5	3.8	Interfere	

Interfering Administration Unique Identifier

Detailed analysis



Find a channel process



Thank you for your attention!

Questions?

Evghenii Sestacov

ITU/BR

evghenii.sestacov@itu.int