



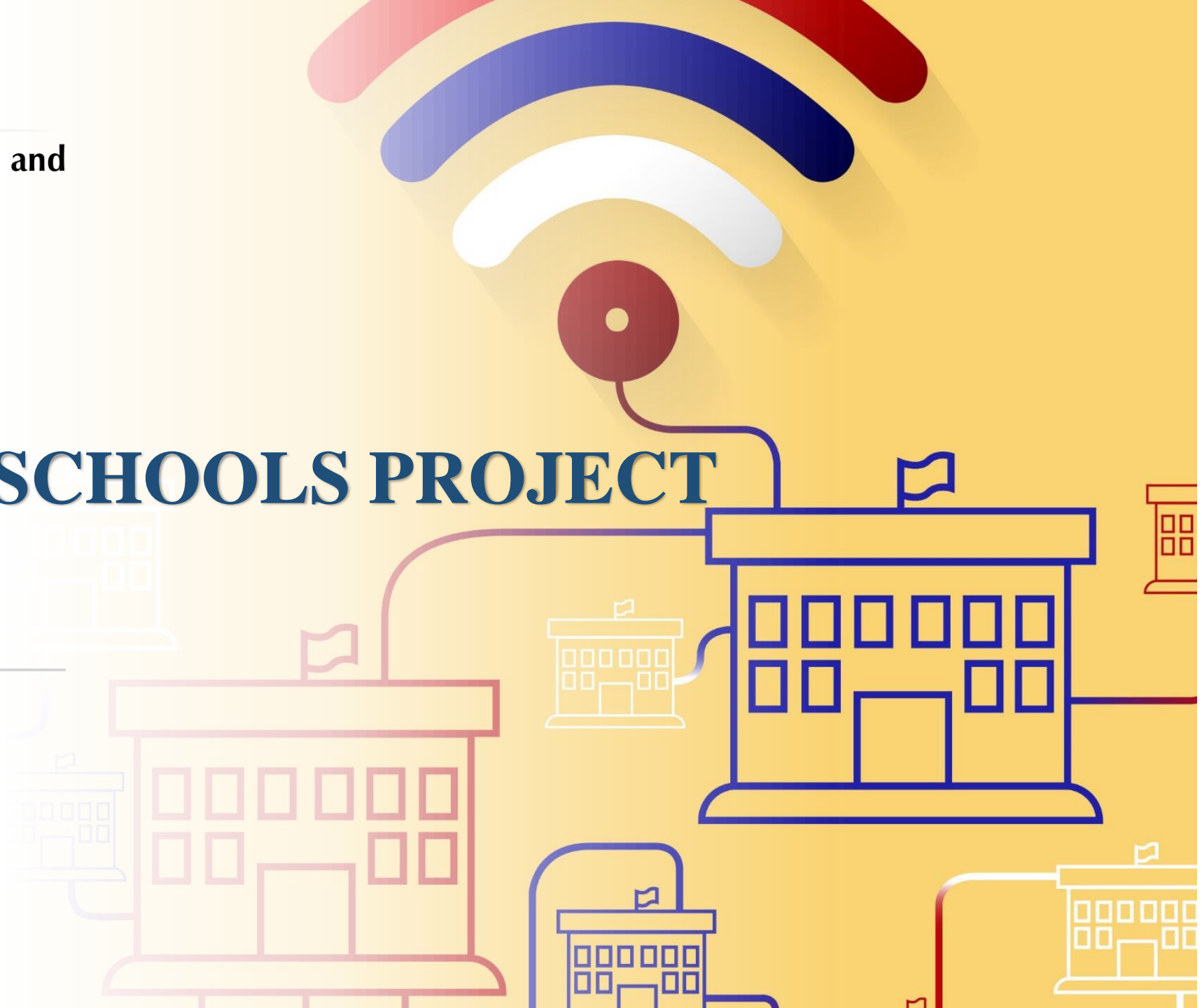
Republic of Serbia

Ministry of Trade, Tourism and
Telecommunications

CONNECTED SCHOOLS PROJECT

Milan Dobrijević

Assistant Minister





Republic of Serbia

Ministry of Trade, Tourism and
Telecommunications

Connected Schools Project

Objectives

- Equalization of the educational opportunities for all students in the Republic of Serbia (attending classes both in urban and rural areas)
- Fulfillment of infrastructural preconditions for further development of education - ICT infrastructure development for educational institutions
 - Competitiveness in the digital age
- Achievement of a higher level of safety in schools



Republic of Serbia

Ministry of Trade, Tourism and
Telecommunications

Connected Schools Project

WAN and WLAN Connectivity for all schools

Description

- Provision of WAN connectivity to Academic Network of the Republic of Serbia (AMRES) for all schools
- Provision of the wireless local area network (WLAN) infrastructure to educational institutions (base schools and detached school units) in accordance with the established criteria
- AMRES central location systems and backbone upgrade



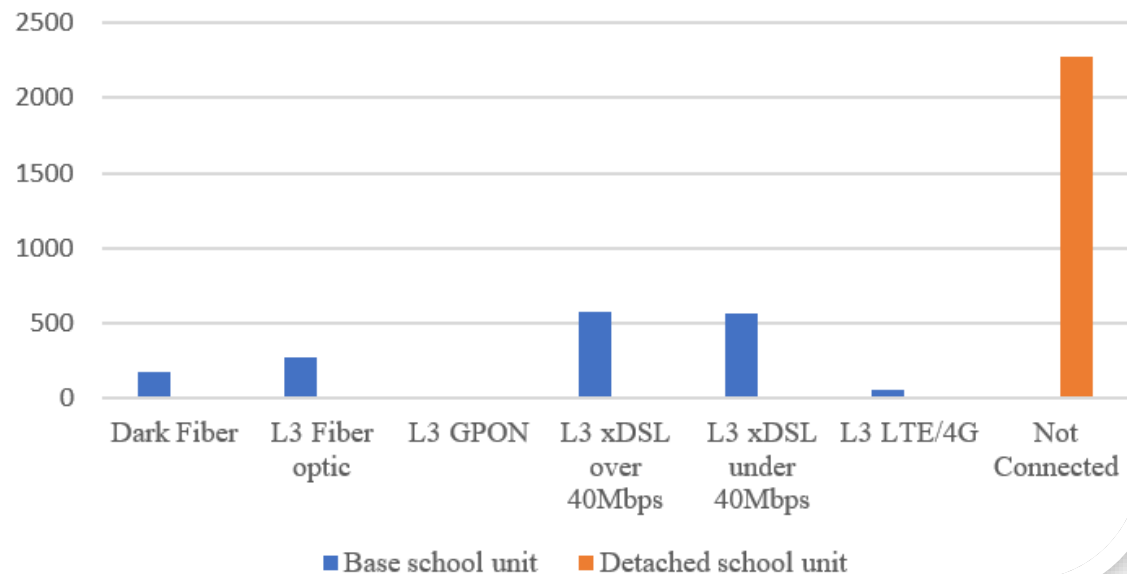
Republic of Serbia

Ministry of Trade, Tourism and
Telecommunications

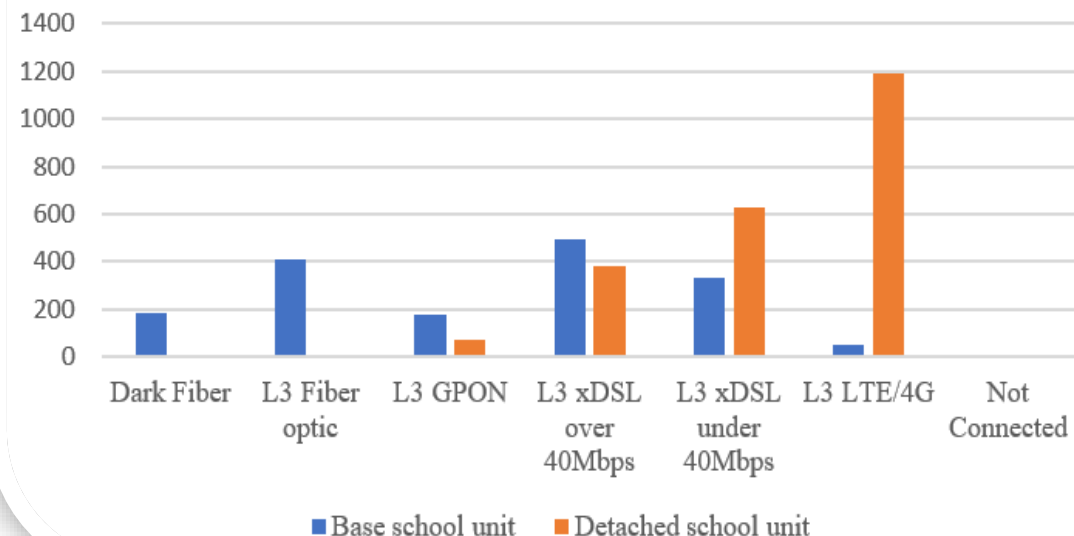
Connected Schools Project WAN Schools' Connectivity

- Objective:** Provision of fast, stable and secure Internet access through the Academic Network of the Republic of Serbia (AMRES) to all base schools (already provided) and all detached school units (until the end of 2021) in the Republic of Serbia

Current WAN Schools' Connectivity



To be realized WAN Schools' Connectivity (end of 2021)





Connected Schools Project WAN Schools' Connectivity

Current WAN Schools' Connectivity

Current Link type			
Link type	Base school unit	Detached school unit	Total
Dark Fiber	181	0	181
L3 Fiber optic	271	0	271
L3 GPON	9	0	9
L3 xDSL over 40Mbps	576	0	576
L3 xDSL under 40Mbps	563	2	565
L3 LTE/4G	53	0	53
Not Connected	3	2271	2274
Total	1656	2273	3929

To be realized WAN Schools' Connectivity (end of 2021)

Future Link Type			
Link type	Base school unit	Detached school unit	Total
Dark Fiber	182	0	182
L3 Fiber optic	413	0	413
L3 GPON	181	69	250
L3 xDSL over 40Mbps	492	382	874
L3 xDSL under 40Mbps	335	628	963
L3 LTE/4G	53	1194	1247
Not Connected	0	0	0
Total	1656	2273	3929



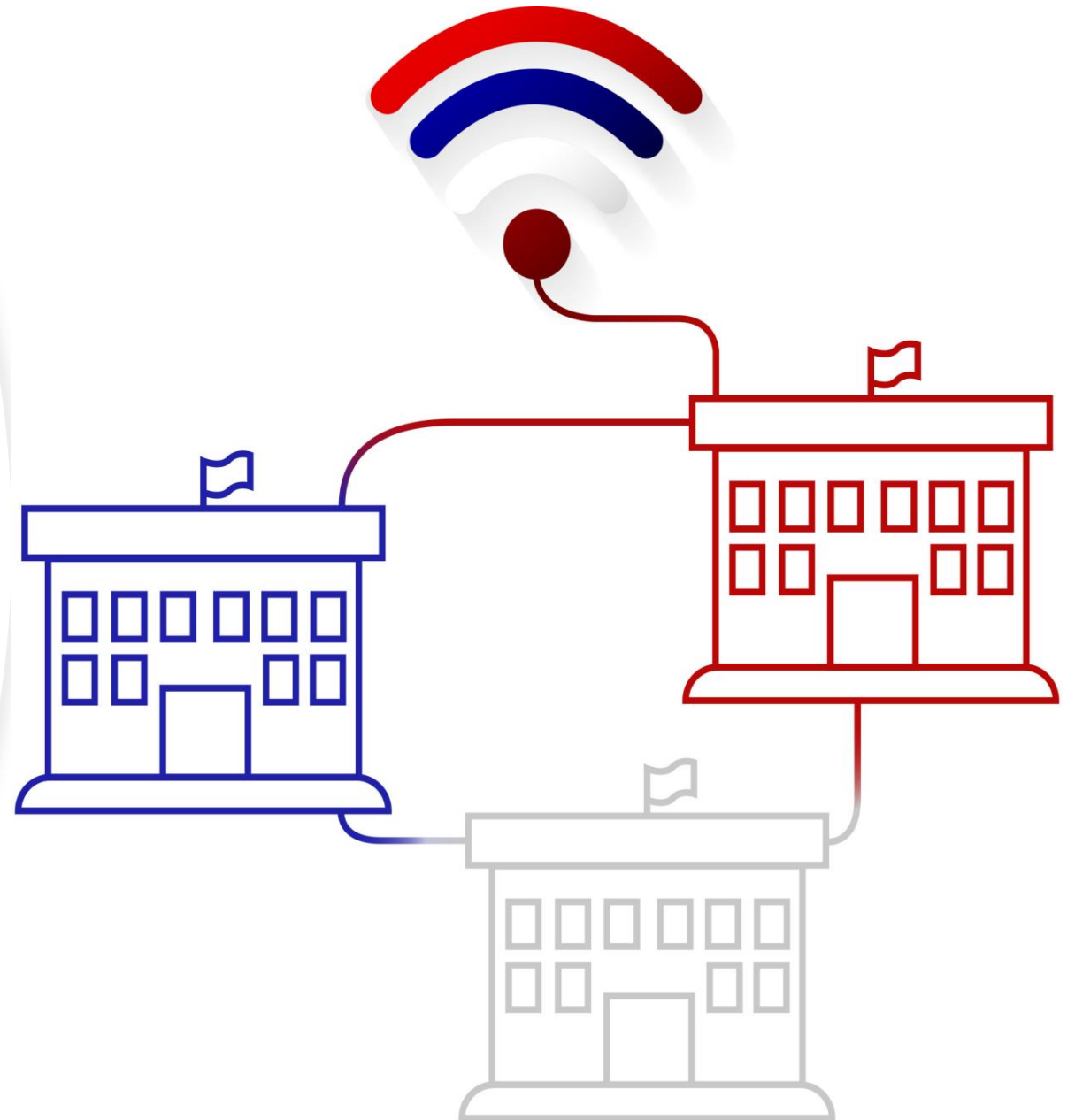
Republic of Serbia

Ministry of Trade, Tourism and
Telecommunications

Connected Schools Project WLAN Schools' Connectivity

Criteria

1. Number of students attending classes in a school unit (school units with the largest number of students are connected first)
2. Size of a school unit (5 or more active classrooms)
3. Type of connection to AMRES/the Internet (speed of 30Mbps+)





Republic of Serbia

Ministry of Trade, Tourism and
Telecommunications

Connected Schools Project WLAN Schools' Connectivity

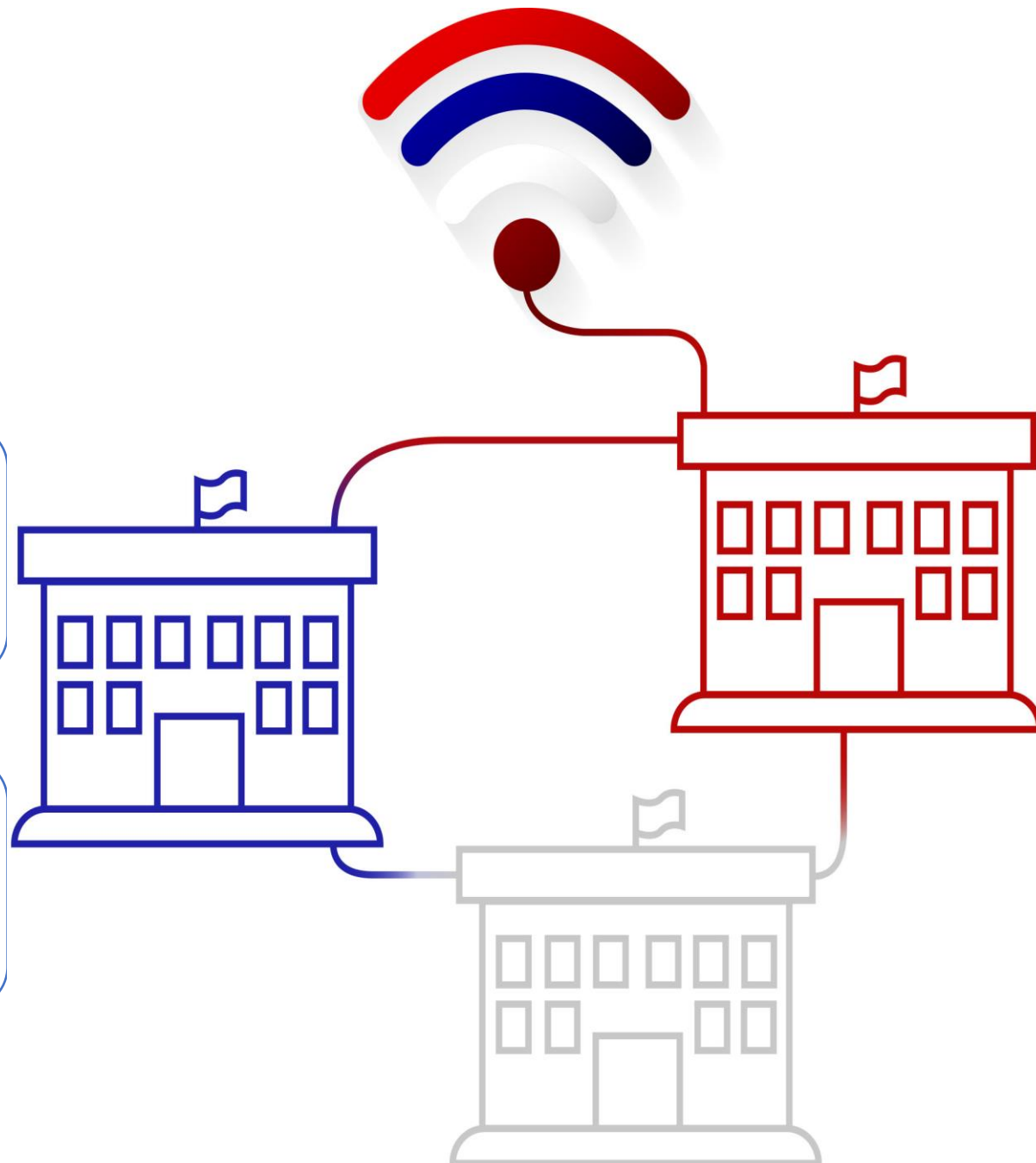
Timeline and Budget

Financed by the
Ministry of Trade,
Tourism and
Telecommunications
~40M EUR

- Connected Schools Pilot project – realized in 2018
- Connected Schools Project Phase 2 – realized in 2019 and 2020

Financed by the
European Investment
Bank (EIB) – 28M
EUR

- Connected Schools Project Phase 3 – Realization in 2021





Republic of Serbia

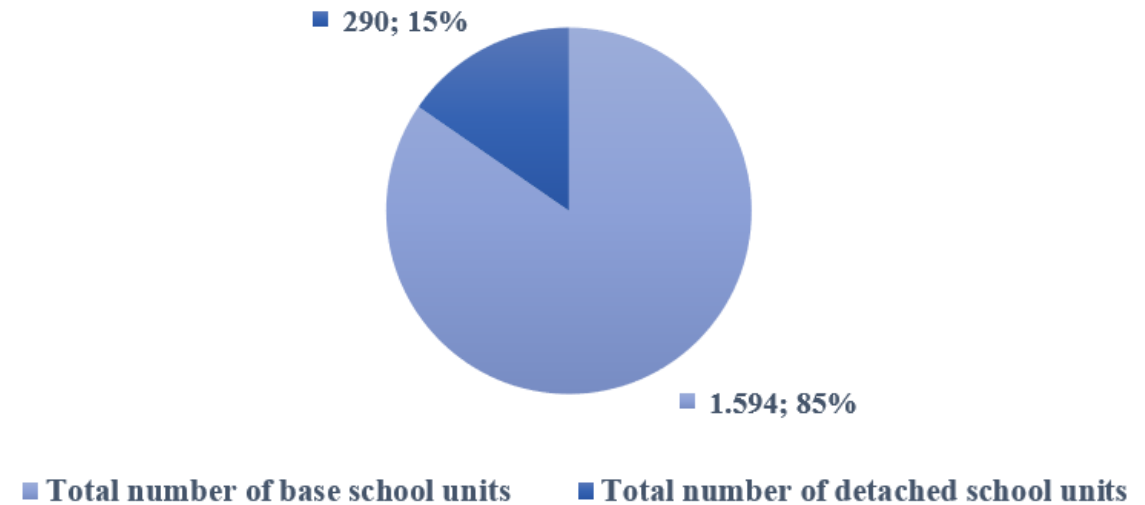
Ministry of Trade, Tourism and
Telecommunications

Connected Schools Project WLAN Schools' Connectivity

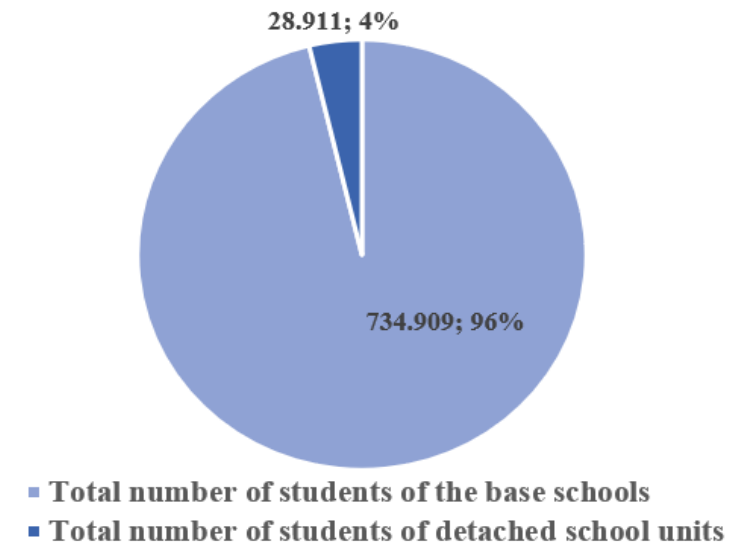
Scope

- 1884 schools
- 763.820 students (95% of total number of students in the RS)
- 36.438 active classrooms (87% of total number of active classrooms in the RS)

The ratio of base schools and detached school units in the Republic of Serbia



The ratio of the number of students attending classes at base schools and at detached school units





Republic of Serbia

Ministry of Trade, Tourism and
Telecommunications

Connected Schools Project WLAN Schools' Connectivity

Results (Pilot, Phase 2)

934

School
objects
(both base
units and
detached
units)

49,6%

the percentage of
finished schools that
are envisaged by the
project

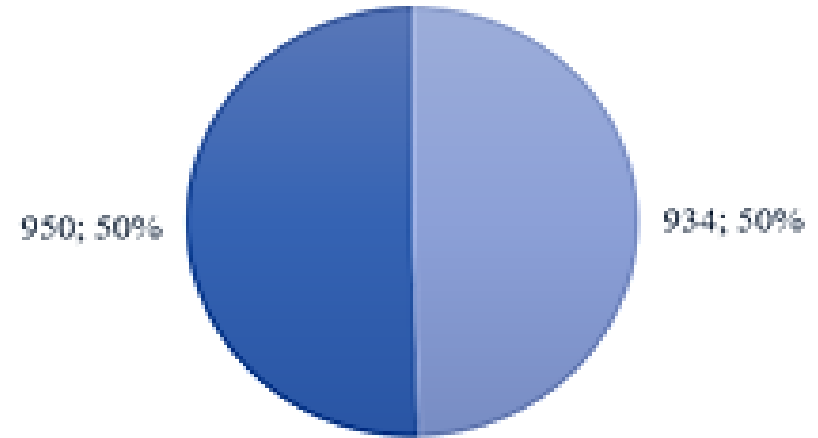
479.248

The number of students
attending classes in the
finished school units

63%

the percentage of
students attending
classes in schools
envisaged by the
project

Connected Schools Project - Pilot, Phase 2, Phase 3



- Total number of schools finished during Pilot and Phase 2 (2018+2019+2020)
- Total number of schools to be finished during Phase 3 (2021)



Republic of Serbia

Ministry of Trade, Tourism and
Telecommunications

Connected Schools Project WLAN Schools' Connectivity

Phase 3 - 2021

950
School units (both base schools and detached school units)

50,4%
the percentage of the total number of schools envisaged by the project

248.572
total number of students attending classes at school units

37%
the percentage of students attending classes at school units that are envisaged for realization during Phase 3

Connected Schools Project Realization - Active classrooms perspective



- Total number of active classrooms encompassed by Pilot and Phase 2 (2018+2019+2020)
- Total number of active classrooms envisaged by Phase 3 (2021)



Republic of Serbia

Ministry of Trade, Tourism and
Telecommunications

Connected Schools Project WLAN Schools' Connectivity Building a Truly Connected National System

- Each and every Wi-fi user that gets registered and obtains an authorized access to the SSID (Service Set Identifier) „skolski_wifi“ within a single base school/detached school unit encompassed by the Connected Schools Project, automatically receives access to the Wi-fi network in all of the schools that are in the Project's scope
- Teachers and educators have the possibility to create a one-time access Wi-fi password (which grants Wi-fi access for the duration of 24 hours), when having visitors at base school/detached school units



Republic of Serbia

Ministry of Trade, Tourism and
Telecommunications

Thank you!

Milan Dobrijević

Assistant Minister

Ministry of Trade, Tourism and Telecommunications

milan.dobrijevic@mtt.gov.rs