


ITU and Industry

The background is a collage of business meeting scenes. In the top left, a man in a blue shirt is looking at a laptop. In the top right, a woman with glasses and curly hair is smiling. In the bottom left, a person is using a laptop. In the bottom right, a man is looking at a document. The entire image is overlaid with a semi-transparent blue rectangle. Overlaid on this rectangle and the background are several white geometric elements: a large circle with a dashed line, a solid circle, and several lines with arrowheads pointing in different directions. There are also some small blue and white triangles scattered around.

Governments and industry working together since 1870s





**“The Future Influences
The Present Just
As Much As The Past.”**

Friedrich Nietzsche

ITU membership is growing and diversifying

ITU's global membership includes 193 Member States as well as some 900 companies

Traditional Players: Telecom/ICT, Satellite, Broadcasting, Computing, Software and more), universities, and international and regional organizations.

More and more emerging industry players are coming to ITU



Smart sustainable cities

Bridging the gender divide

Digital Inclusion

Artificial Intelligence

High altitude platform systems (HAPS)

Autonomous Driving

Digital Transformation ^{CubeSat}

Digital Finance

5G

Broadband

Internet of Things (IoTs)

Non-geostationary satellite systems

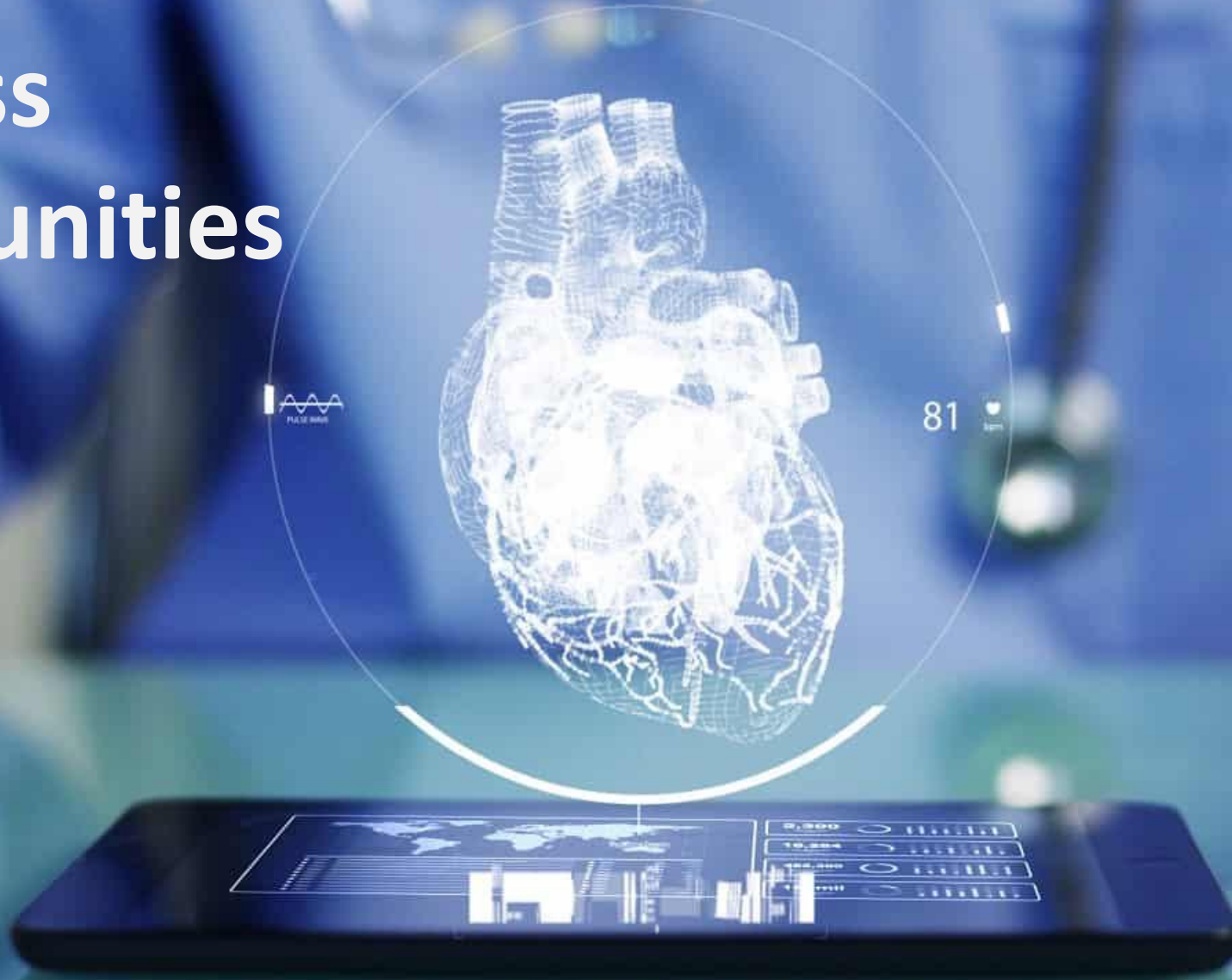
Earth stations in motion (ESIM) ^{mHealth}

3D TV ^{Satellite constellation}

Digital Fiat Currency

Digital Broadcasting

**And more
business
opportunities**



The background of the image shows several pairs of hands in business attire (sleeves of white shirts and dark suits) using white markers to draw on a dark, textured wooden surface. The hands are positioned around a central diagram. The diagram consists of a large circle with a horizontal line passing through its center. A dashed circle is drawn inside the large circle, slightly offset to the left. Four white dots are placed on the large circle's circumference at the top-left, top-right, bottom-left, and bottom-right positions. Each dot is connected to the center of the large circle by a straight white line. Additionally, there are four 'X' marks drawn on the large circle's circumference, one in each quadrant. The text 'ITU' is written in large, white, sans-serif capital letters above the horizontal line, and 'STUDY GROUPS' is written in the same style below the line.

ITU STUDY GROUPS

ITU Study Groups

Radiocommunication:

Manages **radio-frequency spectrum** and **satellite orbits**, ensures interference free operations of **radiocommunication systems**

6 Study Groups dealing with **231 Questions**

Standardization:

Produces **standards** and defines **tariff principles** for international telecommunication services

11 Study Groups dealing with **155 Questions**

Development:

Facilitates the **creation, development and improvement** of telecommunication and ICT

2 Study Groups dealing with **17 Questions**

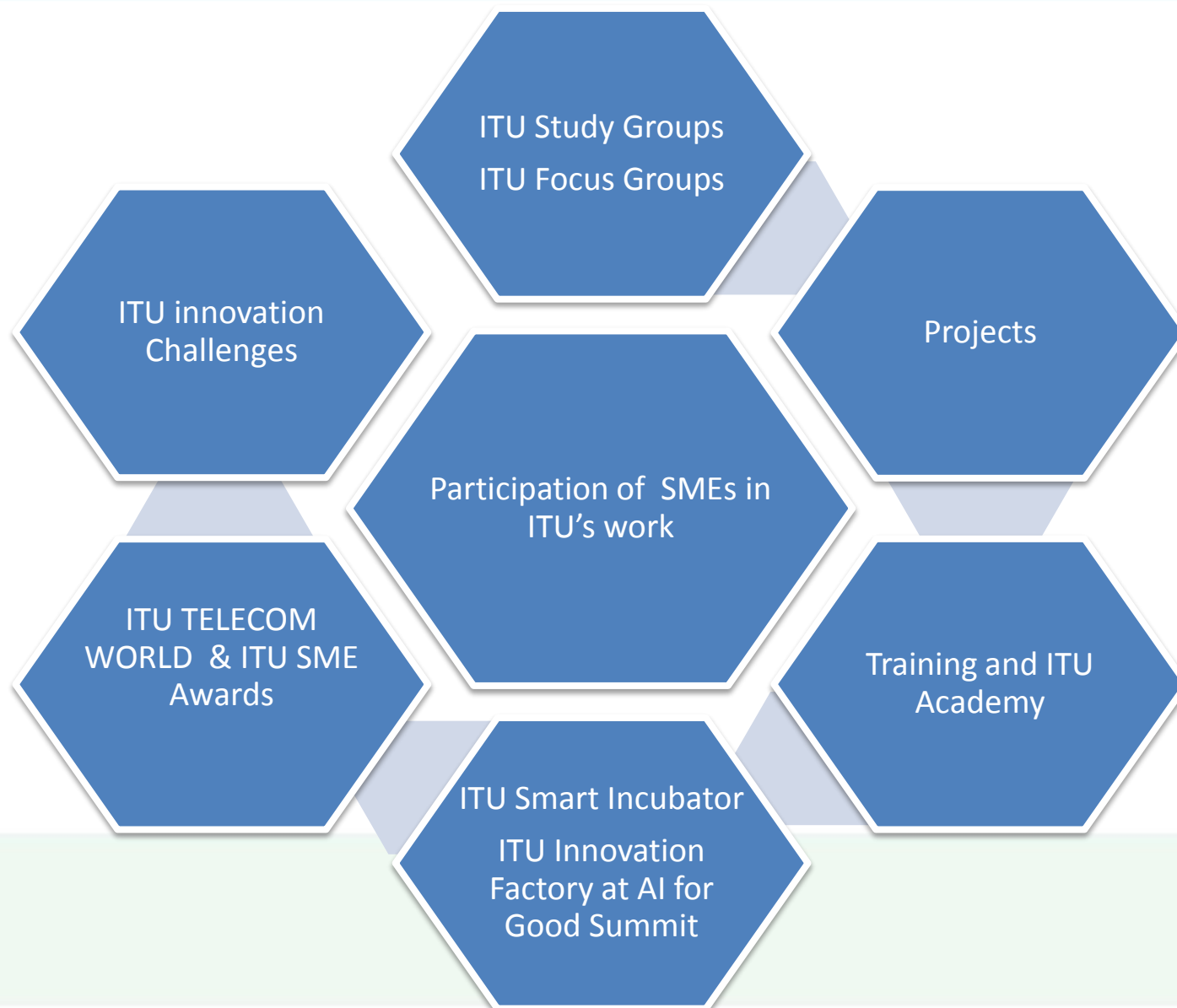
ITU Study Groups

Each Sector of ITU has a number of Study Groups related to the sectors' **specific field**. Academia has the opportunity to contribute their ideas and expertise on important topics through **19 Study Groups**.

Key themes of Study Groups include:

- Policy and Regulatory Reform
- Big Data
- Smart/Sustainable Cities
- Cybersecurity
- E-waste
- Connected car
- Spectrum Management
- Rural Connectivity
- Climate Change
- Mobile communications
- Broadcasting communications
- Economics of Roaming
- Disaster Relief
- Digital Financial Inclusion
- Video technologies
- Accessibility
- Satellite systems
- Radio wave propagation
- Radiodetermination systems
- Earth exploration, meteorological aids, space research
- Radio amateur
- Radio astronomy

Participation of SMEs in ITU's work:



Examples of SMEs contributions to ITU's work:

ASTEM: accessible IPTV terminals and their testing (ITU-T Study Group 16).

Wayfindr: audio-based network navigation system for persons with vision impairment and its conformance testing (ITU-T Study Group 16).

Wavecontrol: contributed to the development of electromagnetic field monitoring procedures that can be found on ITU-T K.83 and ITU-T K.113. Wavecontrol is also contributing to a document on telecommunication workers' Radio frequency (RF) safety which is expected to become a new ITU-T recommendation (ITU-T SG5)

Vaulto Technologies: contributed a technical report on the abuse of SS7 vulnerabilities to commit financial fraud. (ITU-T SG11)

WHY to come to ITU?

- Network with 193 governments, over **900 companies** and **universities**
- New business solutions based on ITU recommendations(Interoperability is key) and new business revenue from local to global
- Increase credibility at the national level and have an opportunity to work with government and local partners
- Join a unique community of over 20,000 tech leaders and experts and get their advice
- Partner with recognised business players from all over the world
- Access to access up-to-date first source data, statistics and studies
- Get knowledge, train and incubate your ideas/proposals with expert advice



Sector Members & Associates

- Network with ICT regulators, policy-makers and experts from industry and academia
- Contribute to global standards and best practices
- Advise governments on ICT strategies and technologies
- Participate / Lead Study Groups on emerging issues in the ICT field
- Get visibility on the international scene
- Share expertise and access training and specialized seminars
- Participate in global and regional conferences and debates
- Launch innovative public-private partnerships
- Get access to world-leading ICT statistics, studies and restricted information
- Discounts: 15% publications

PP-18 Resolution 209 (Dubai, 2018) and fees

PP-18 Resolution 209 (Dubai, 2018) encourages **SMEs to participate as Associates** in the Sectors of ITU, with reduced fees.

Must be approved by respective Member State as meeting national criteria for an SME.

Must have fewer than 250 employees + annual revenues below CHF 15 million.

Fees set at:

CHF 4K for SMEs from developed countries

CHF 2K for SMEs from developing countries



JOIN US

membership@itu.int

www.itu.int

