



**Regional Workshop for Europe and CIS On Spectrum Management  
and Transition to Digital Terrestrial Television Broadcasting  
5-7 May 2015, Hotel Mercure Buda**

**Digital Terrestrial Television Transition – Utilisation of DD -  
Bosnia And Herzegovina Experience**

*Jasmin MUSOVIC*  
*Director of Radiomonitoring, IT and  
Licence Compliance*



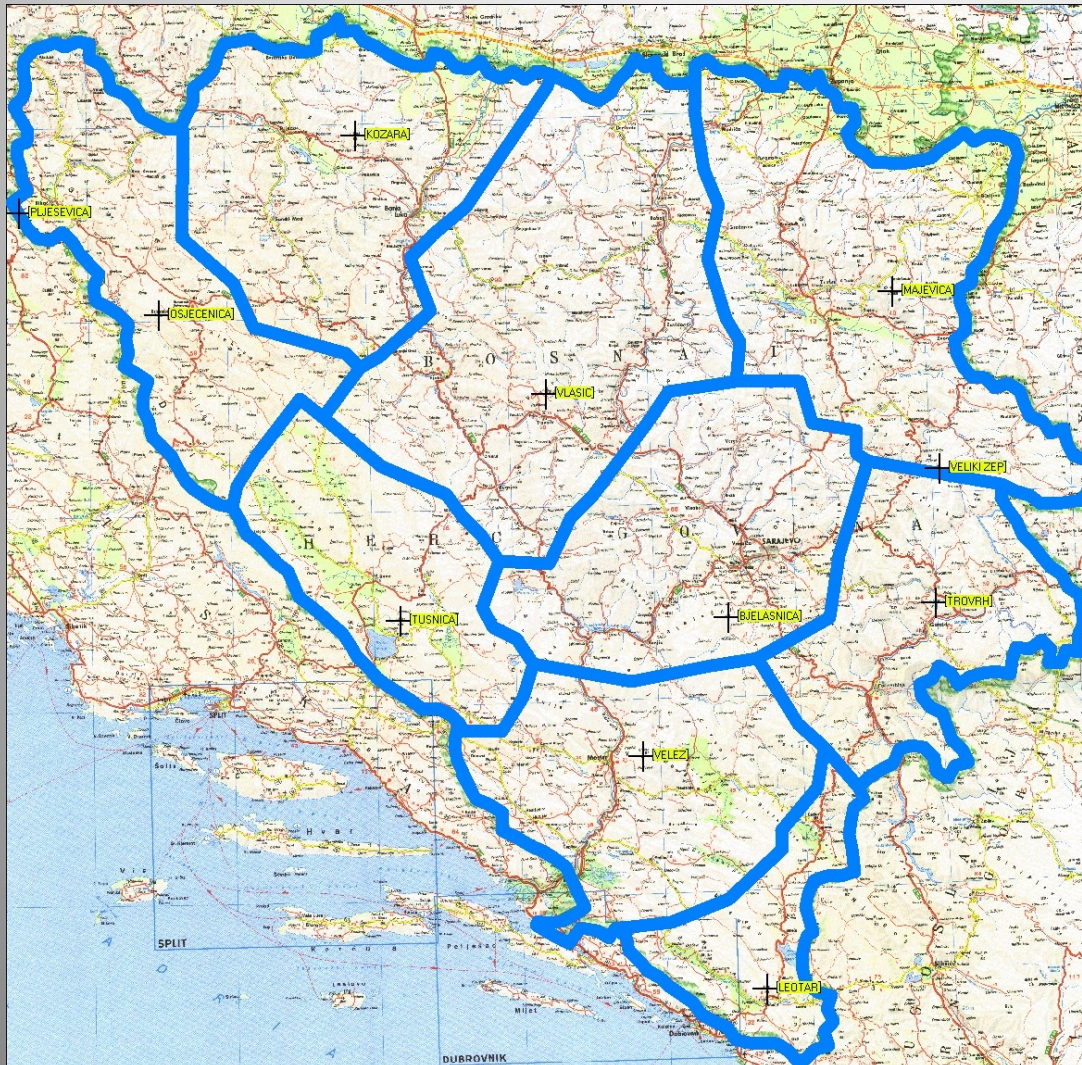
**BOSNIA AND HERZEGOVINA  
Communications Regulatory Agency**



# OVERVIEW

- Digital Dividend in 790-862 MHz band
  - Allocation and use of broadcasting spectrum resources
- Other digital dividends:
  - Release of 3.5 GHz band on which MW links of PBS are layered
- Utilisation of the mobile networks
  - The analysis of the mobile networks utilisation in Bosnia and Herzegovina (B&H)
  - Comparison of the BH situation with overall world trends.

# Allocation and use of broadcasting spectrum resources



BIH	1	2	3	4	5	6	7	8
<b>BJELAŠNICA</b>	6	24	28	30	40	47	54	61
<b>KOZARA</b>	6	27	32	33	37	45	61	66
<b>LEOTAR</b>	7	32	40	46	56	52	63	65
<b>MAJEVICA</b>	9	25	31	53	55	60	65	68
<b>PLJEŠEVICA</b>	6	24	47	50	52	55	65	67
<b>TROVRH</b>	5	21	48	33	38	44	45	58
<b>TUŠNICA</b>	5	25	38	44	49	58	60	62
<b>VELEŽ</b>	7	26	36	39	42	50	55	69
<b>VLAŠIĆ</b>	7	22	29	35	46	57	59	64
<b>SARAJEVO</b>		37	41	50	52	67		

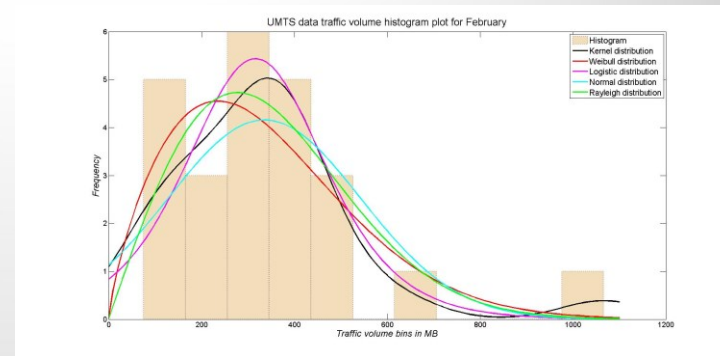


# Digital Dividend

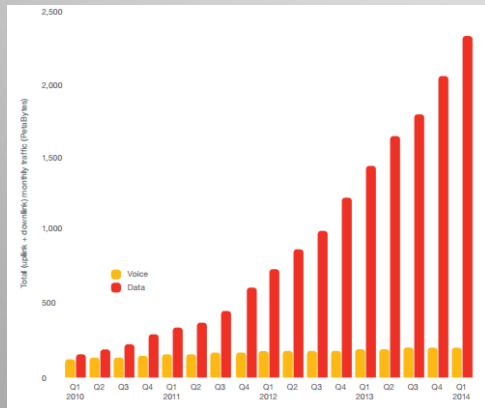
- ***DIGITAL DIVIDEND WILL BE USED EFFICIENTLY:***
  - *Implementing the most advanced technologies (such as DVB-T2, after ASO)*
  - *Increasing frequency spectrum planning efficiency* The evolution of the DTT frequency plan to allow for the increase in the number of national layers available may require changes to some of the GE06 planning criteria (e.g. coverage areas, density of DTT networks, quality of service).
  - **Carefully sharing of the Digital Dividend** (790-862 MHz for bi-directional, low/medium power services such as mobile broadband services.)

# UTILISATION OF THE MOBILE NETWORKS

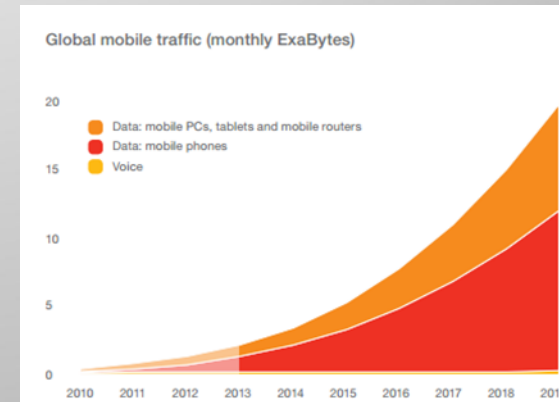
The analysis of the mobile networks utilisation in Bosnia and Herzegovina (B&H)  
Comparison of the BH situation with overall world trends.



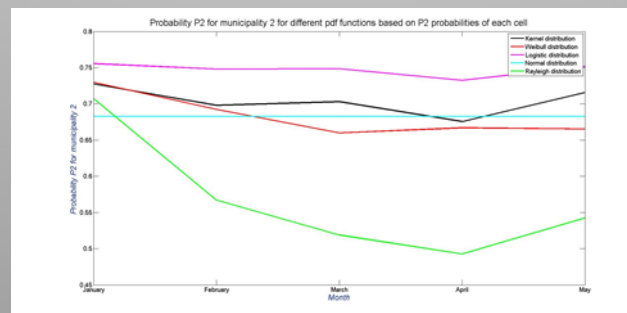
Traffic volume histogram for one cell during February with different probability density functions estimators



Total global monthly data and voice traffic trend



Total global data and voice traffic forecast



Traffic estimation during time period of five month for the biggest municipality in BH

# THANK YOU FOR YOUR ATTENTION

*Jasmin MUSOVIC, MScEE*

*CRA BH*

*email: [jmusovic@rak.ba](mailto:jmusovic@rak.ba)*