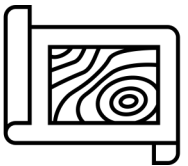




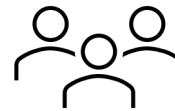
# **Smart Sustainable Cities in the CIS Region: Organizational and Technical Aspects**

**Cristina Bueti**  
Counsellor, ITU

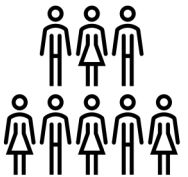
# The CIS region in numbers



**Total estimated area**  
~ 22.1 million km<sup>2</sup>



**Population density per km<sup>2</sup>**  
13



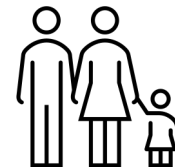
**Total estimated population**  
~ 288 million people (in 2018)



**Urban population**  
67% of total CIS population



**Share of the world population**  
~ 4%



**Population aged 15 – 64**  
69% of total CIS population

# ITU facilitating Smart Sustainable Cities



# ITU's activities



## Standardization

1

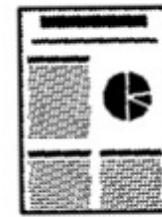
**Example:**  
ITU-T Study Group  
20 on 'IoT and  
Smart Cities and  
Communities'



## Research

2

**Example:**  
global community  
of ICT experts from  
universities and  
research institutes



## Publications

3

**Example:**  
reports, such as  
'Frontier  
technologies to  
protect the  
environment and  
tackle climate  
change'



## Awareness-Raising

4

**Example:**  
international events  
such as webinars



## Projects and Collaboration

5

**Example:**  
projects featured in  
the U4SSC  
Implementation  
Programme



## Networking and Partnerships

6

**Example:**  
joint work with other  
standards  
developing  
organizations

# ITU-T Study Group 20

**Q1/20** Interoperability and interworking of IoT and SC&C applications and services

**Q2/20** Requirements, capabilities and architectural frameworks across verticals enhanced by emerging digital technologies

**Q3/20** IoT and SC&C architectures, protocols and QoS/QoE

**Q4/20** Data analytics, sharing, processing and management, including big data aspects, of IoT and SC&C

**Q5/20** Study of emerging digital technologies, terminology and definitions

**Q6/20** Security, privacy, trust and identification for IoT and SC&C

**Q7/20** Evaluation and assessment of Smart Sustainable Cities and Communities

Lead Study Group on

Internet of Things and its applications

Smart cities and communities

IoT Identification

# Areas of ITU-T SG20 standards for SSCs



**Interoperability**



**Data Management  
& Processing**



**Master Plan and  
Assessment**



**Emergency  
response &  
management**



**IoT Security, Trust  
& Identification**



**Health and  
Accessibility**

# Examples of ITU-T SG20 standards



## Interoperability

- Recommendation ITU-T Y.4200: 'Requirements for the interoperability of smart city platforms'
- Recommendation ITU-T Y.4201: 'High-level requirements and reference framework of SCPs'
- Recommendation ITU-T Y.4459: 'Digital entity architecture framework for Internet of things interoperability'
- Recommendation ITU-T Y.4500.13: 'oneM2M – Interoperability testing'
- ITU-T Y Supplement 61: 'Features of application programming interfaces for IoT data in SC&Cs'
- Technical Specification D3.3: 'Framework to support data interoperability in IoT environments'

# Examples of ITU-T SG20 standards



## Data Management & Processing

- Recommendation ITU-T Y.4114: 'Specific requirements and capabilities of the Internet of things for big data'
- Recommendation ITU-T Y.4461: 'Framework of open data in smart cities'
- Recommendation ITU-T Y.4560: 'Blockchain-based data exchange and sharing for supporting Internet of Things and Smart Cities and Communities'
- Recommendation ITU-T Y.4561: 'Blockchain-based data management for supporting IoT and SC&Cs'
- TR D2.1: 'Data process and management framework for IoT and SC&Cs'
- TR D2.3: 'Web based data model on IoT and smart city'
- TR D4.3: 'Overview of technical enablers for trusted data'
- TS D4.4: 'Framework to support IoT data quality management'
- TS D.5: 'Data economy: commercialization, ecosystem, and impact assessment'



# Examples of ITU-T SG20 standards



## Master Plan and Assessment

- ITU-T Series Y Supplement 32: 'A guide for city leaders'
- ITU-T Series Y Supplement 33: 'Master Plan'
- Recommendation ITU-T Y.4903/L.1603: 'Key performance indicators for smart sustainable cities to assess the achievement of sustainable development goals'
- Recommendation ITU-T Y.4904: 'Smart sustainable cities maturity model'
- Recommendation ITU-T Y.4905: 'Smart sustainable cities impact assessment'
- Recommendation ITU-T Y.4906: 'Assessment framework for digital transformation of sectors in smart cities'

# Examples of ITU-T SG20 standards



## Emergency Response & Management

- Recommendation ITU-T Y.4102: 'Requirements for IoT devices and operation of IoT applications during disasters'
- Recommendation ITU-T Y.4116: 'Requirements of transportation safety services including use cases and service scenarios'
- Recommendation ITU-T Y.4119: 'Requirements and capability framework for IoT-based automotive emergency response system'
- Recommendation ITU-T Y.4467: 'Minimum set of data structure for automotive emergency response system'
- Recommendation ITU-T Y.4468: 'Minimum set of data transfer protocol for automotive emergency response system'
- Recommendation ITU-T Y.4558: 'Requirements and functional architecture of smart fire smoke detection service'

# Examples of ITU-T SG20 standards



## IoT Security, Trust & Identification

- Recommendation ITU-T Y.4805: 'Identifier service requirements for the interoperability of smart city applications'
- Recommendation ITU-T Y.4806: 'Security capabilities supporting safety of the Internet of Things'
- Recommendation ITU-T Y.4807: 'Agility by design for telecommunication/ICT systems security used in the IoT'
- Recommendation ITU-T Y.4808: 'Digital entity architecture framework to combat counterfeiting in Internet of things'
- Technical Report D4.1: 'Framework for security, privacy, risk and governance in data processing and management'
- Technical Report: 'Cybersecurity, data protection and cyber resilience in smart sustainable cities'

# Examples of ITU-T SG20 standards



## Health and Accessibility

- Recommendation ITU-T Y.4110/Y.2065: 'Service and capability requirements for e-health monitoring services'
- Recommendation ITU-T Y.4117: 'Requirements and capabilities of IoT for support of wearable devices and related services'
- Recommendation ITU-T Y.4204: 'Accessibility requirements for the Internet of things applications and services'
- Recommendation ITU-T Y.4408/Y.2075: 'Capability framework for e-health monitoring services'

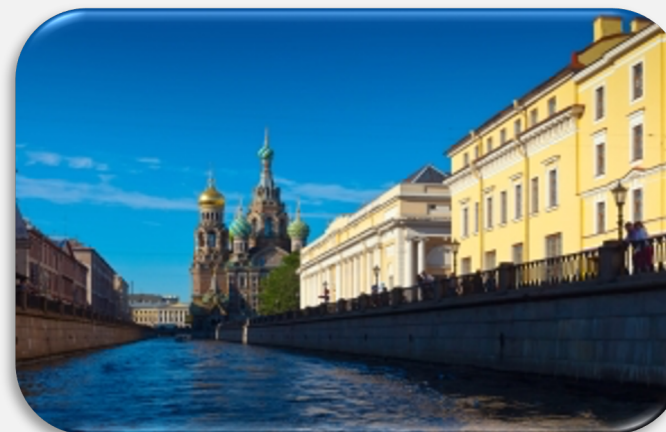
# ITU-T SG20 Regional Group for Eastern Europe, Central Asia and Transcaucasia (SG20RG-EECAT)

**Alexey BORODIN**

SG20RG-EECAT Chairman

**Umida MUSAEVA**

SG20RG-EECAT Vice-chairman



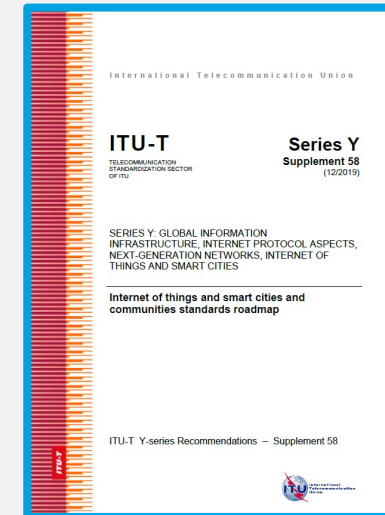
# Coordination with external bodies



**Coordinating ITU-T work on  
IoT and SC&C**



**Providing contact point for  
IoT & applications, incl. SC&C  
activities**

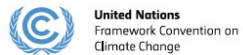


**Presenting the JCA-IoT and  
SC&C roadmap**

# Collaboration with SDOs and Forums



# United for Smart Sustainable Cities





# U4SSC Thematic Groups



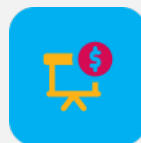
City Platforms



Economic recovery in cities and urban resilience building in the time of COVID-19



Guiding principles for artificial intelligence in cities



Innovative Financing Instruments for Smart Sustainable Cities



Procurement Guidelines for Smart Sustainable Cities



Simple ways to be smart

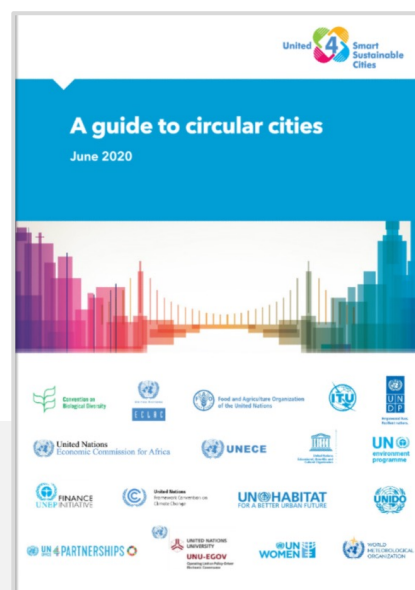
# U4SSC Publications



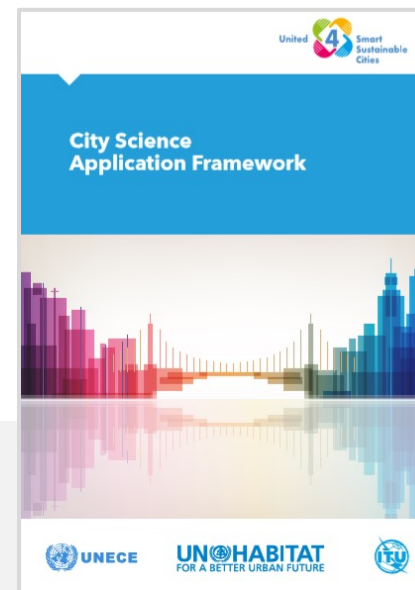
Provides insights into the potential of blockchain in building trust in the SSC endeavours



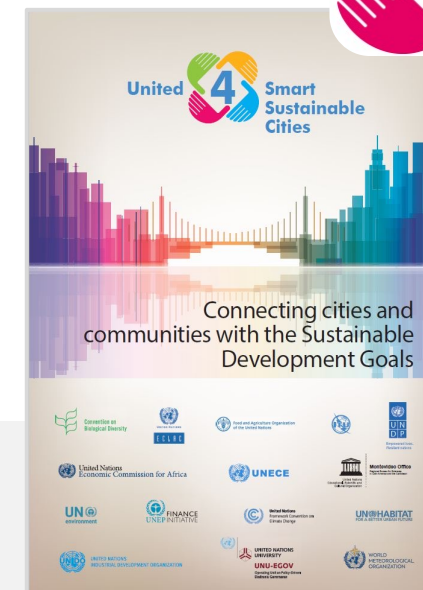
Sheds light on the impact of frontier technologies in cities and on citizens; includes cases.



Provides a circular city implementation framework designed to improve circularity in cities; includes case studies.

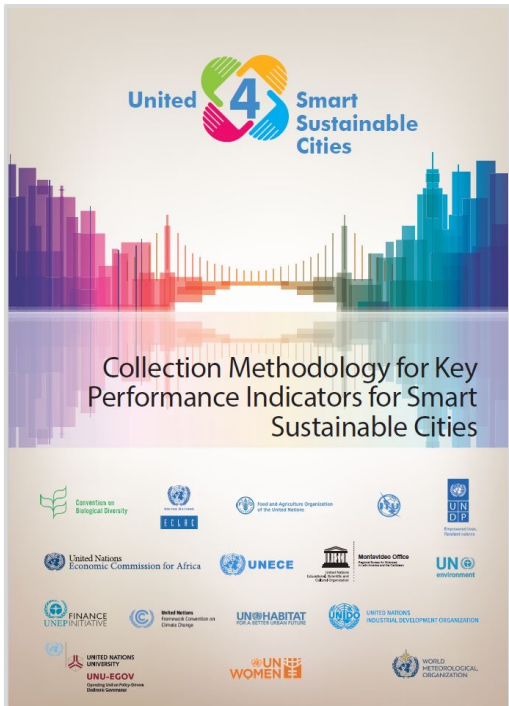


Offers a four-step methodology for cities to assess, prioritize & boost city applications; includes case studies.




Gives an overview of how cities can use ICTs to achieve the SDGs; includes case studies.

# U4SSC KPIs for SSCs



## Currently implemented in:



Moscow


Santa Fe


Esperanza


Montevideo

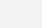
Wels

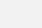
Dubai


 Singapore

 Pully

 Ålesund

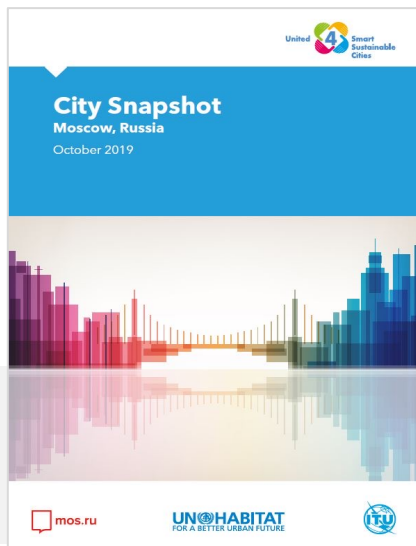
 Kristiansund

 Bodø

 and **100+ more cities!**

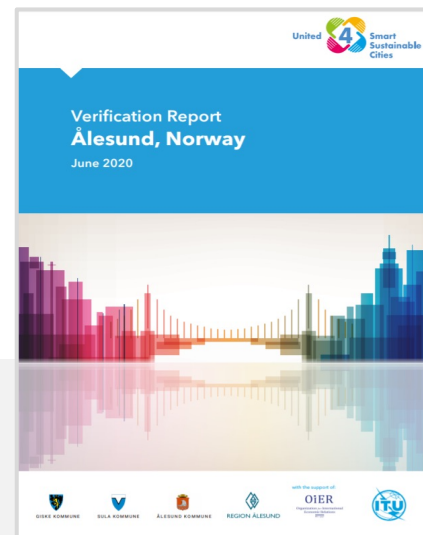


# ITU's implementation of the U4SSC KPIs



## City Snapshots

Provide a visual overview of a city's U4SSC KPIs performance based on global benchmarks.



## Verification Reports

Summarize the conclusions of a city's U4SSC KPIs project.



## Factsheets

Elaborate and analyze the results of a city's U4SSC KPIs project.



## Case Studies

Detail a city's journey towards successfully becoming a Smart Sustainable City.

# ITU's global portal on Environment & SSCs



**Smart sustainable cities**

**Energy efficient ICTs**



**Cities' actions to tackle  
COVID-19**

**E-waste and  
circular economy**



**Frontier Technologies**

**Climate actions**

# Thank you!

Questions? Interested in learning more?  
Let us know!



**Email**

[u4ssc@itu.int](mailto:u4ssc@itu.int)



**Website**

[ITU-T, Smart Sustainable Cities](#)