

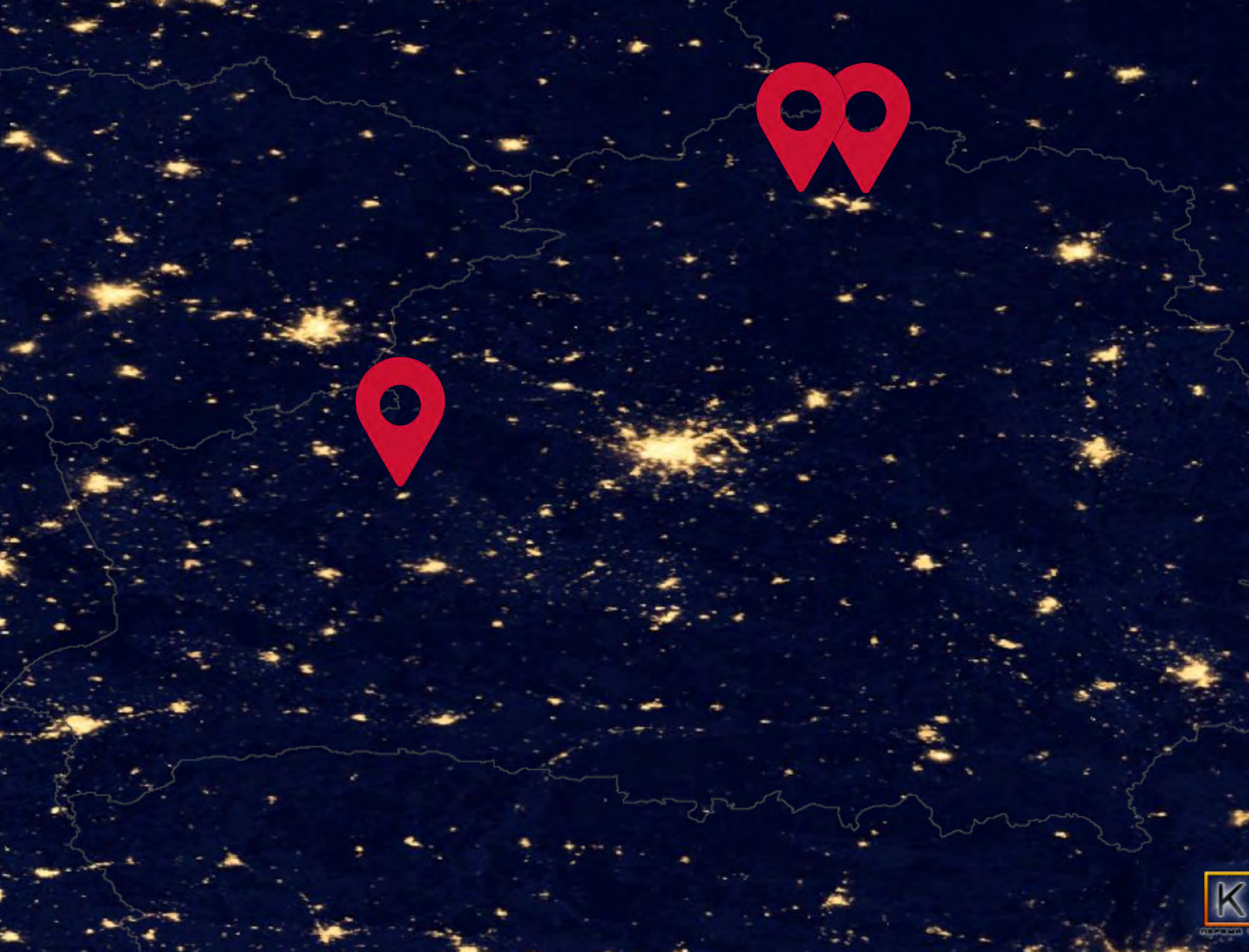
# OUTDOOR CLASSROOM

## LESSONS FOR USE OF KPI U4SSC IN SMALL AND MEDIUM-SIZED CITIES OF BELARUS

Polina Vardevanyan,  
indicator screening expert  
Dmitry Kurlovich,  
GIS mapping expert



UNDP-GEF-Ministry of Nature Project  
«Belarus: Supporting Green Urban  
Development in Small and Medium-Sized  
Cities in Belarus»



## BELARUS:

Urbanization level in our country is **78,1%**

Belarus has **113** cities and **89** urban-type settlements

Of these, **93%** are in the category of small and medium-sized cities with a population of up to **100** thousand inhabitants



NOVOGRUDOK



NOVOPOLOTSK



POLOTSK



*“CITIES URGENTLY NEED TO FIND A METHOD THAT WILL HELP THEM TO UNDERSTAND WHERE THEY ARE, WHERE IT SHOULD BE AND ESTIMATE ITS PROGRESS ON THIS WAY”*

Jesse Berst, Smart Cities Council (SCC)



## KEY PERFORMANCE INDICATOR

**KPI** - a quantitatively measurable indicator of the actual results achieved, that is, it shows the effectiveness of the activities and the effectiveness of the measures taken.

**KPI** system from **U4SSC** offers cities self-assessment instrument.

It allows cities to evaluate the degree to which their smart city strategies achieve sustainable development goals.

It provides a common format for reporting progress on strategies, which can vary significantly.





# NOVOGRUDOK





NOVOPOLOTSK



POLOTSK



## Economy

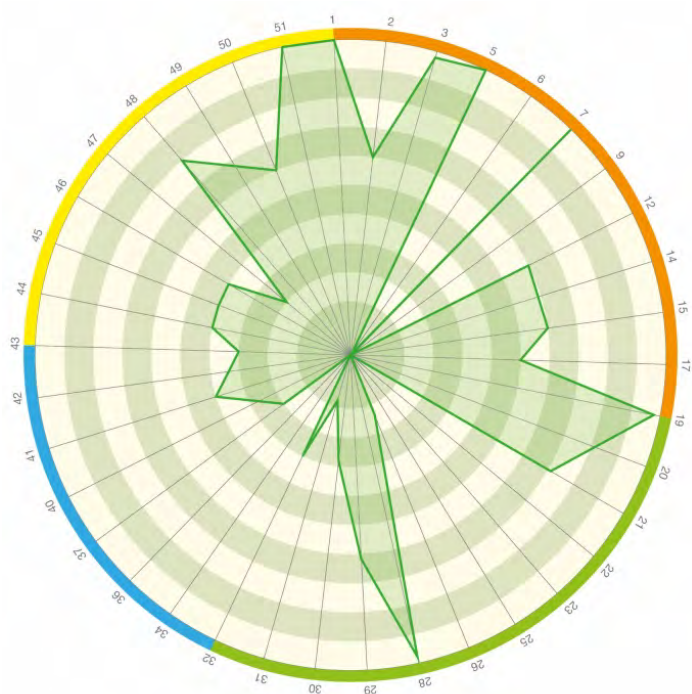
- ICT infrastructure
- Water supply and Sanitation
- Drainage
- Power supply
- Transport
- Government sector
- Innovations
- Employment
- Waste
- Buildings
- Urban development

## Environment

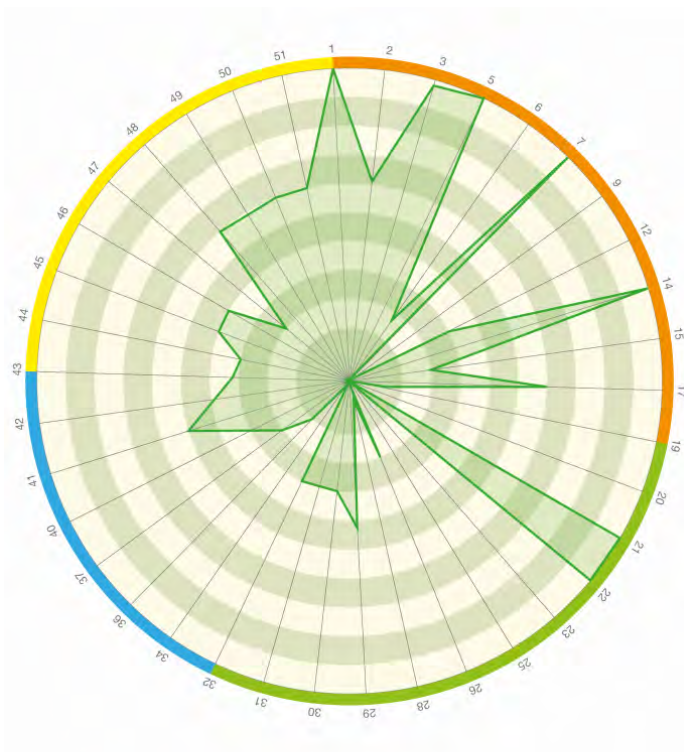
- Air quality
- Water supply and Sanitation
- Waste
- Environmental quality
- Public spaces and nature
- Power industry

## Society and Culture

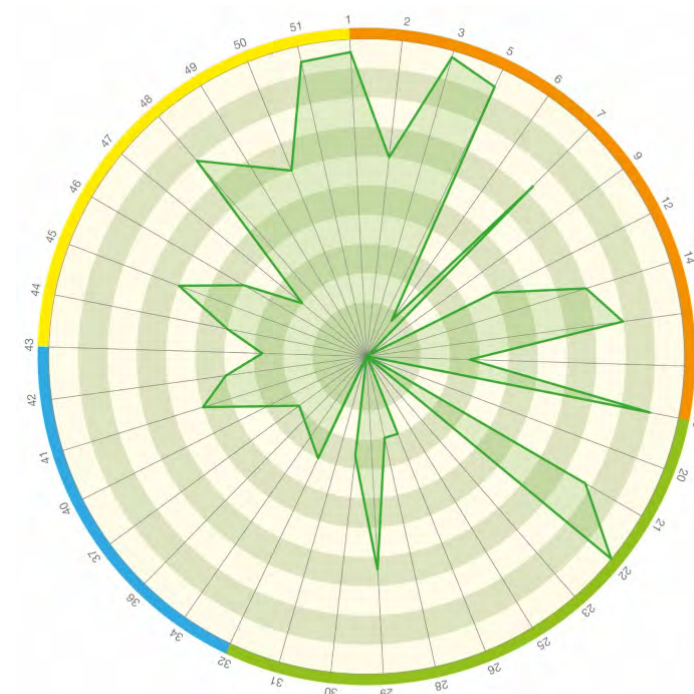
- Education
- Health care
- Culture
- Living conditions
- Social integration
- Security
- Supply security



NOVOGRUDOK



NOVOPOLOTSK



POLOTSK

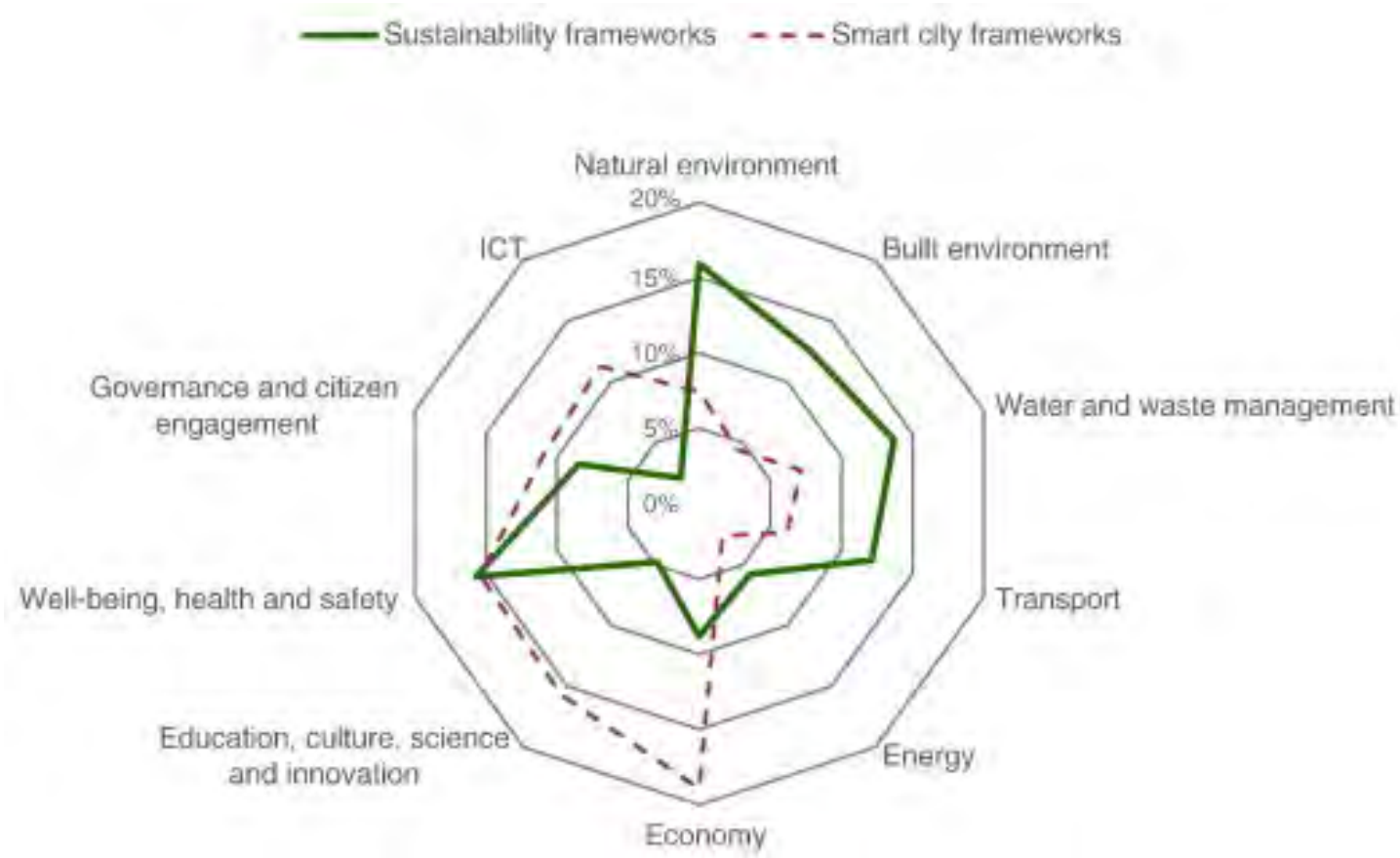
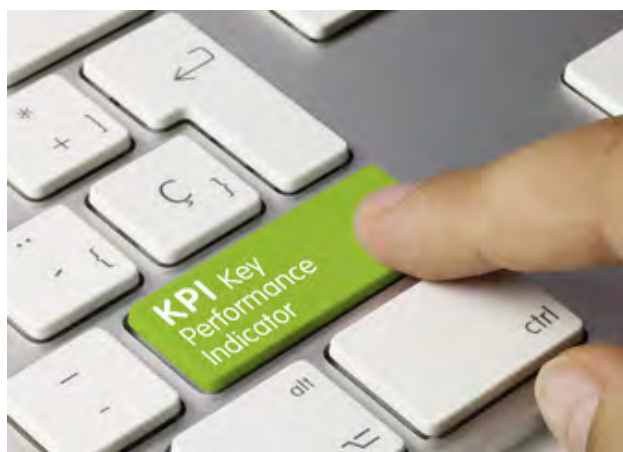




**A GREEN URBAN DEVELOPMENT PLAN** includes in a set of certain **actions** aimed at achieving the goals of sustainable city development while reducing CO2 emissions through energy efficient solutions. In its actions, the city is focused on innovations and the use of ICT.



**GOAL 11: MAKE CITIES AND HUMAN SETTLEMENTS INCLUSIVE, SAFE, RESILIENT AND SUSTAINABLE**



<b>PUBLIC SPACES AND TOURISM</b>  p.	<b>ENERGY</b>  p.	<b>WASTE</b>  p.	<b>GREEN TERRITORIES AND GREEN INFRASTRUCTURE</b>  p.
<b>DISTRICTS (land use)</b>  p.	<b>TRANSPORT AND MOBILITY</b>  p.	<b>WATER</b>  p.	<b>VULNERABLE LANDSCAPES AND BIODIVERSITY</b>  p.
<b>BUILDINGS</b>  p.			<b>CITY FORM AND REGIONAL CONNECTIONS</b>  p.





NOVOPOLOTSK



NOVOGRUDOK

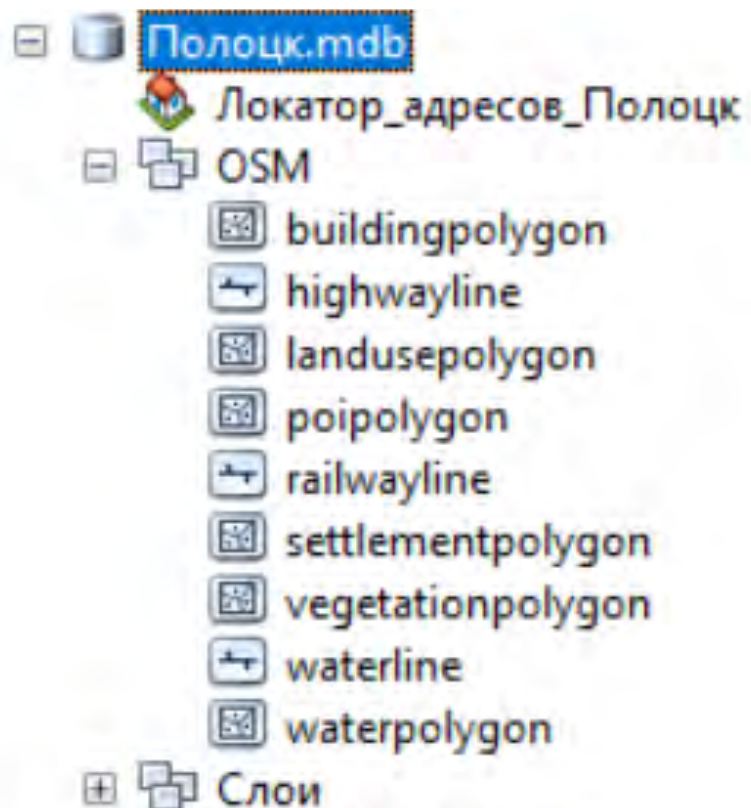
POLOTSK

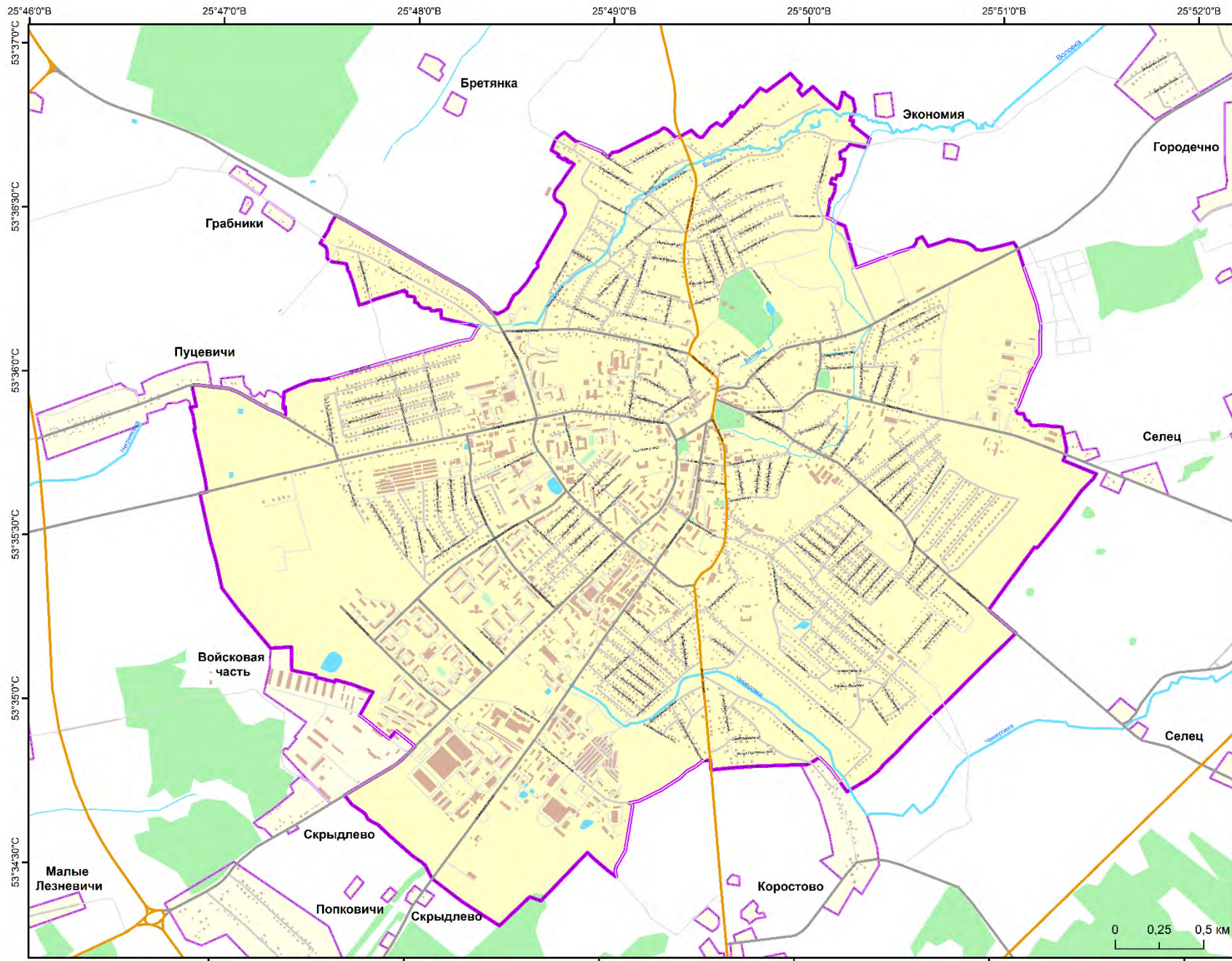


**KPI system from U4SSC**

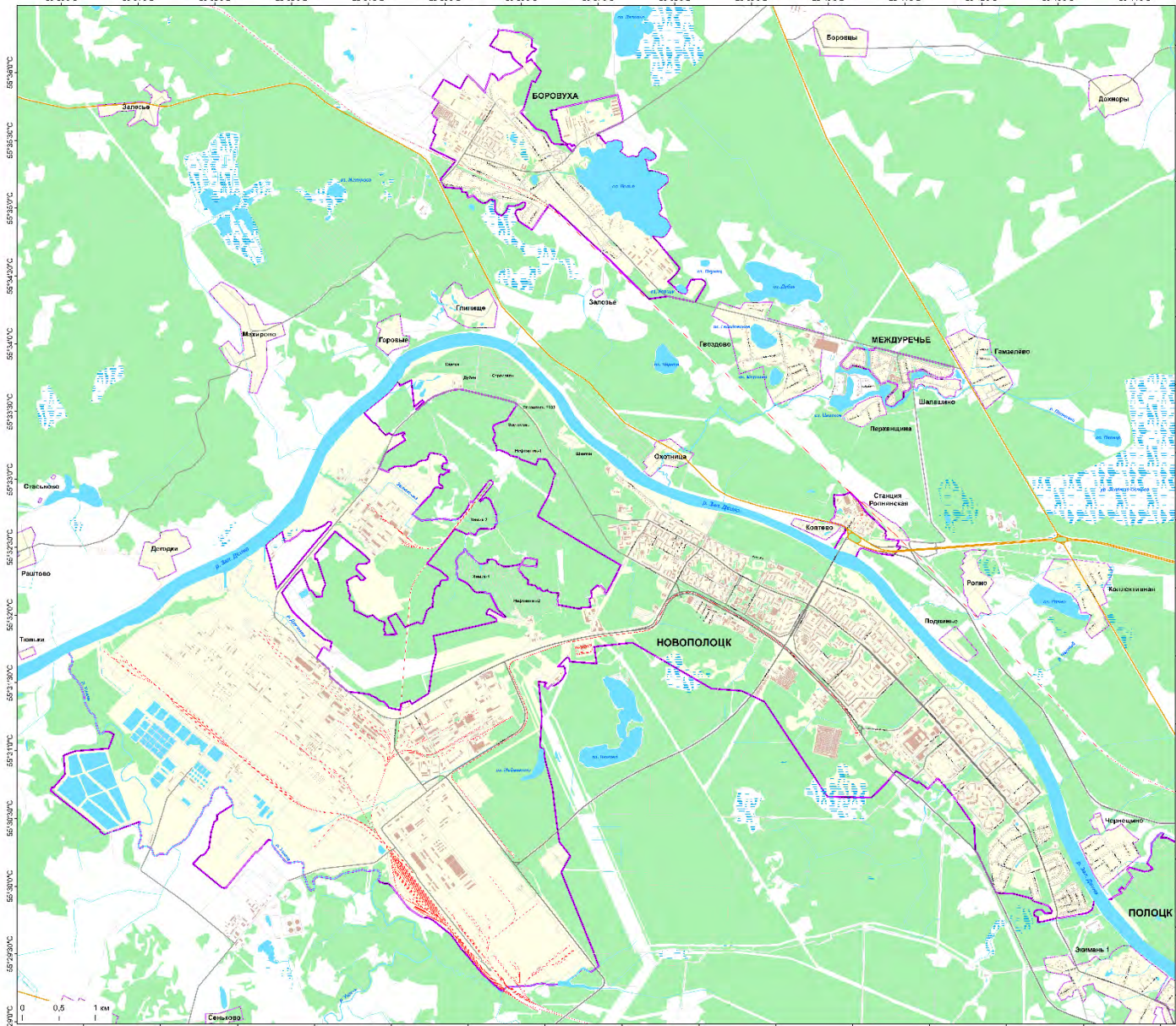
URBAN DEVELOPMENT AND TERRITORIAL-SPATIAL PLANNING

**“SMART”**: this implies a science-based and innovative methodology (including data innovations, such as **SPATIAL ANALYSIS, GIS**, “big data”) in order to provide information on the results of urban plans





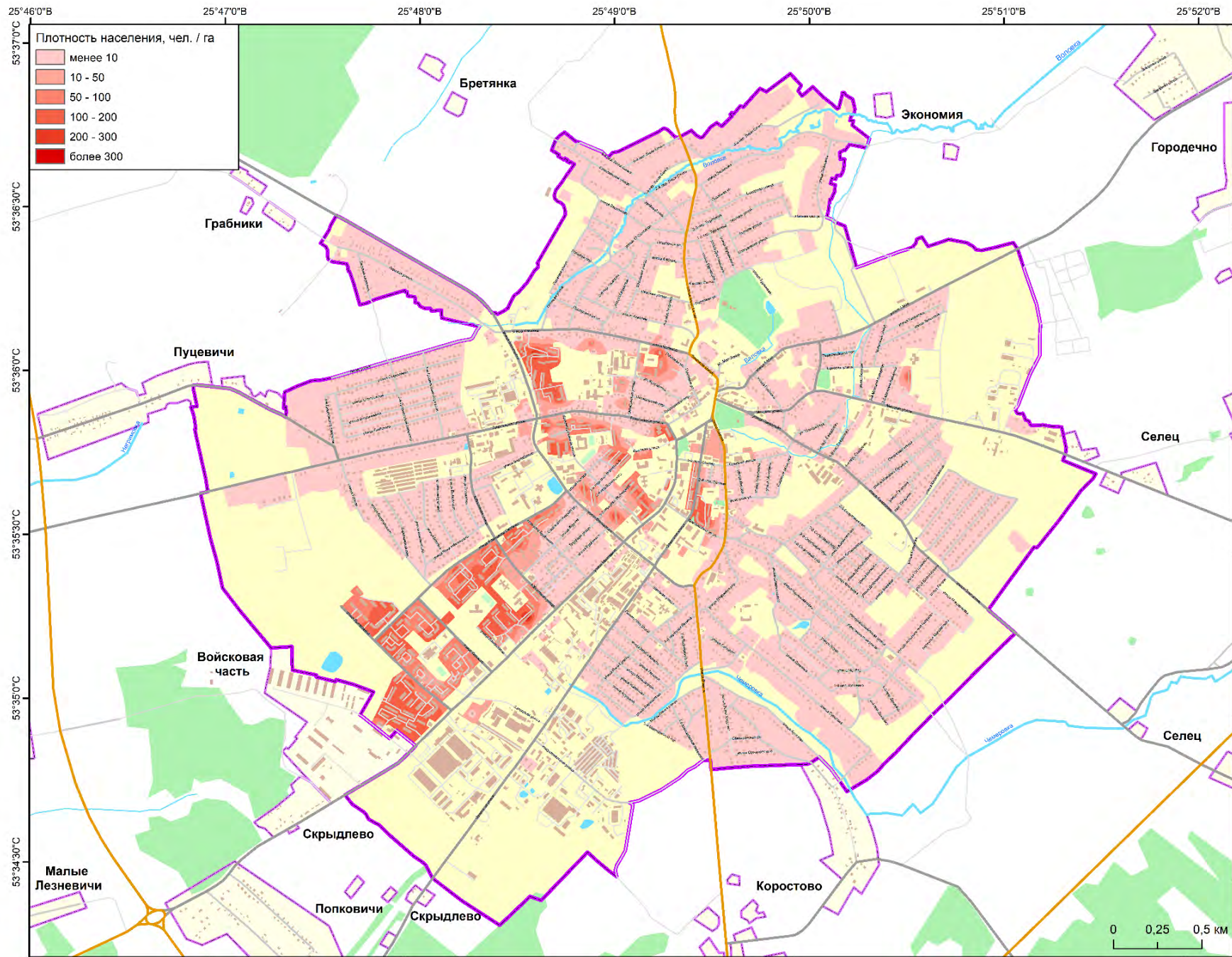
NOVOGRUDOK



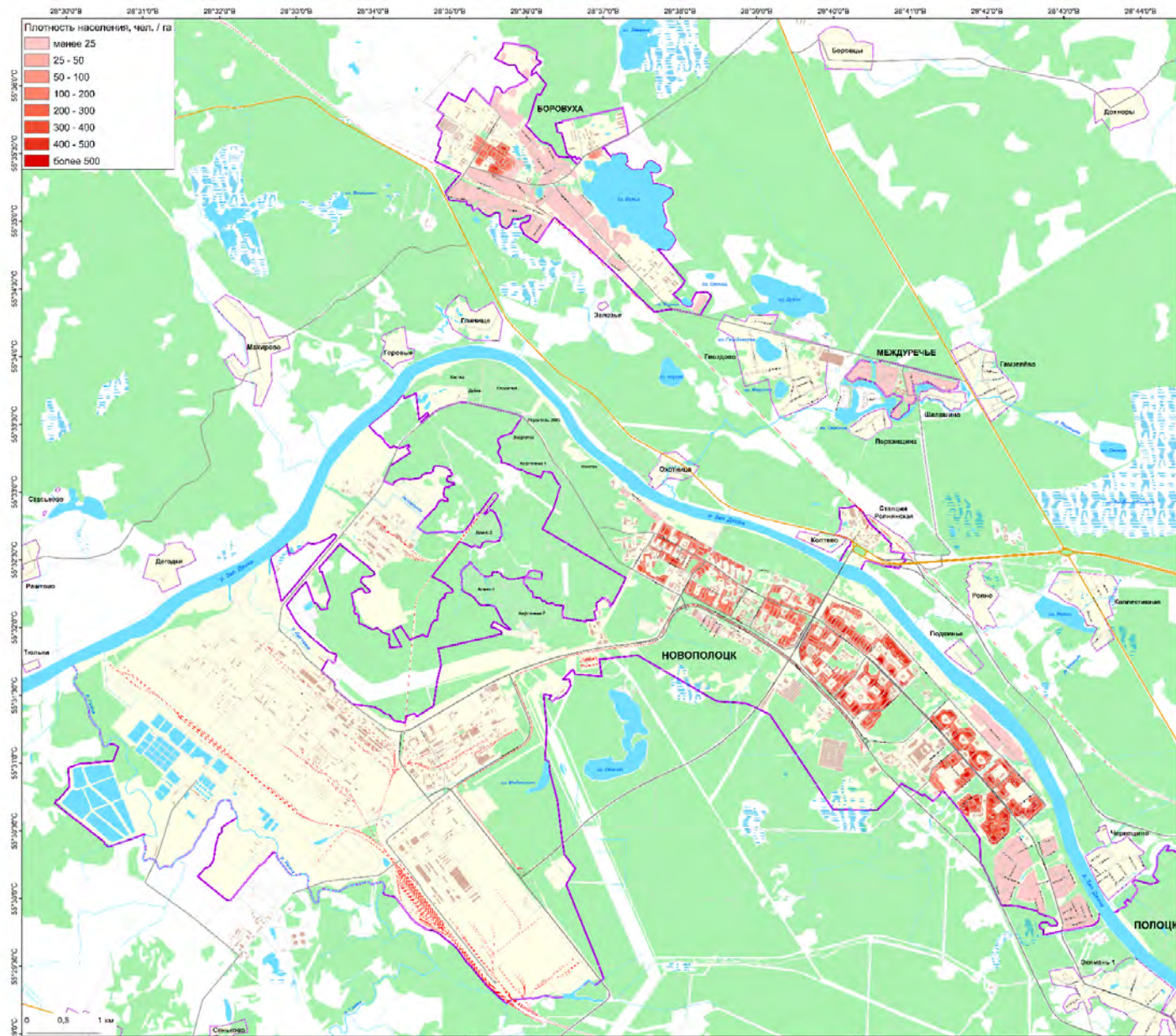
NOVOPOLOTSK



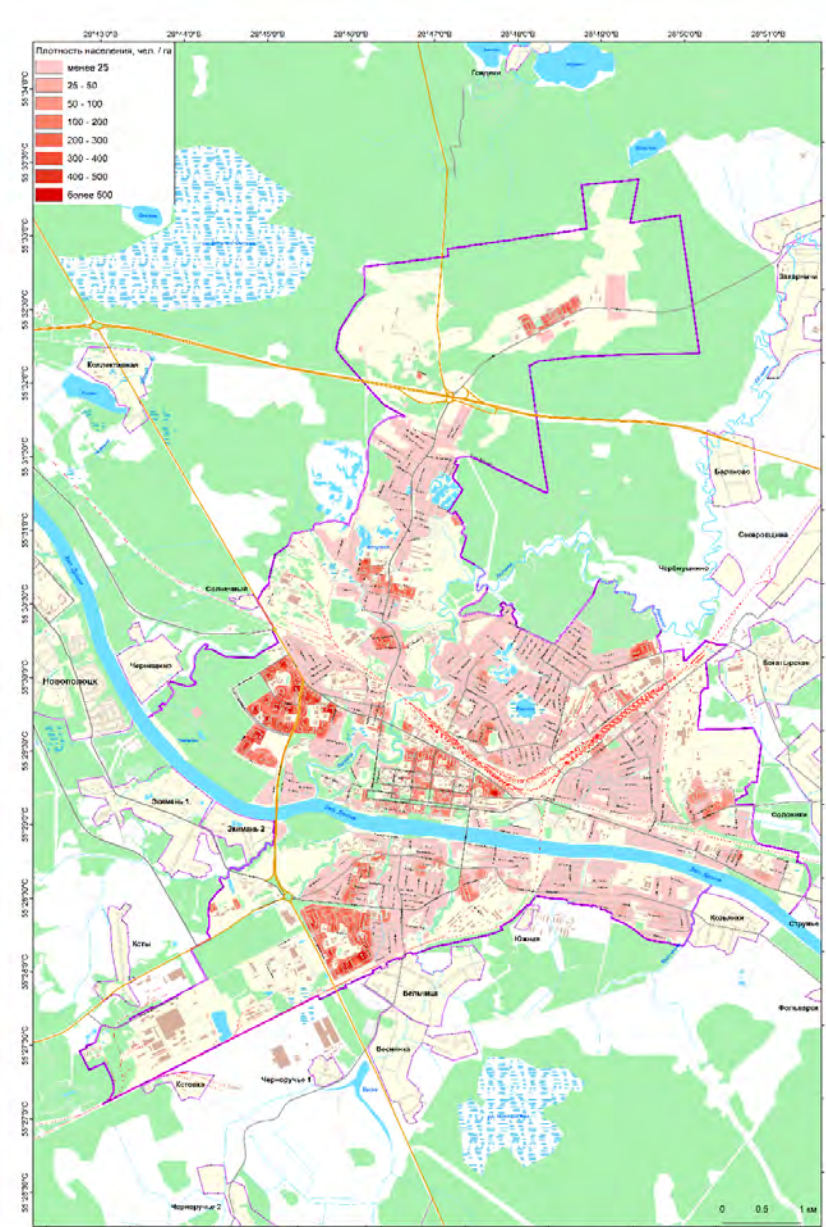
POLOTSK



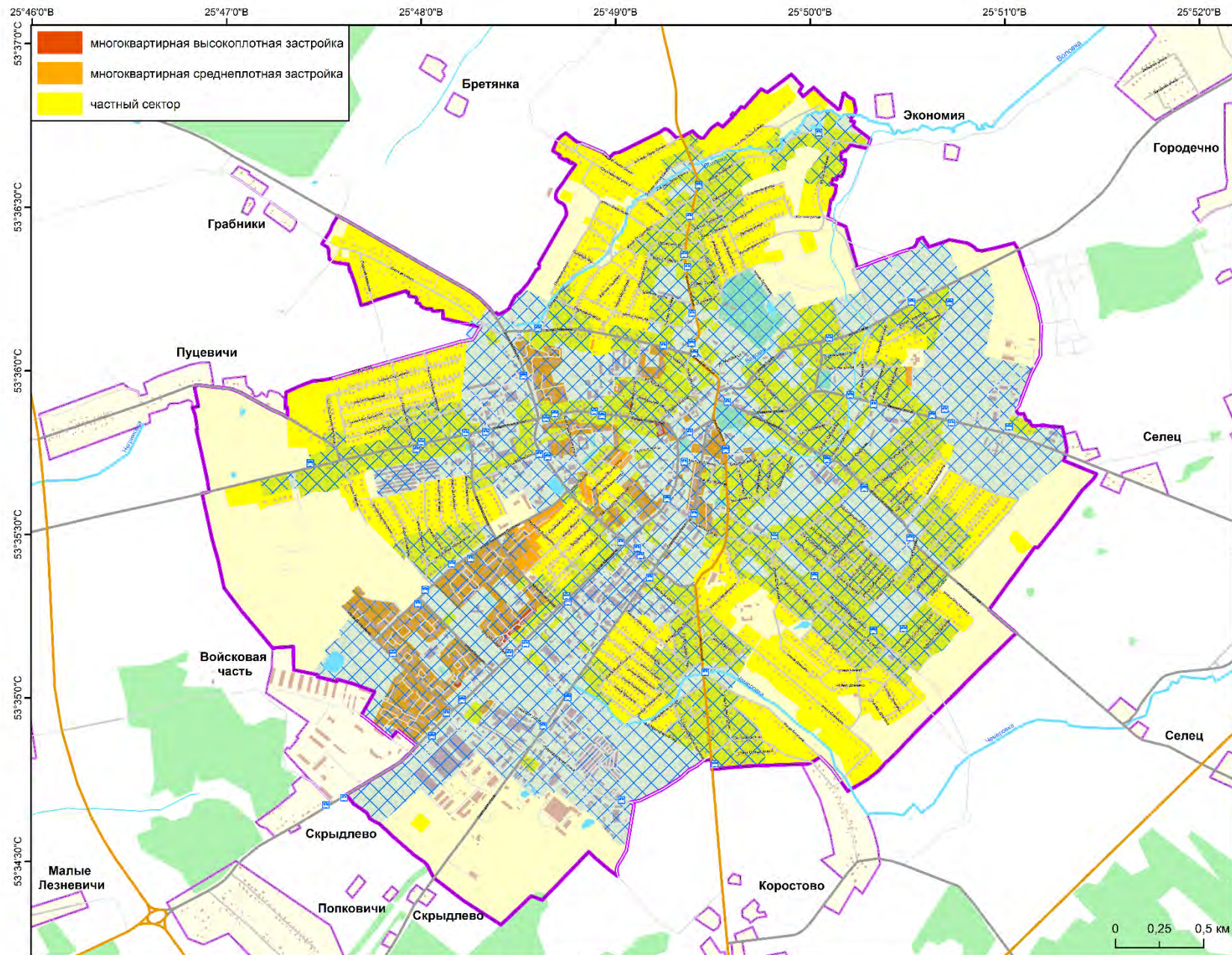
NOVOGRUDOK



NOVOPOLOTSK

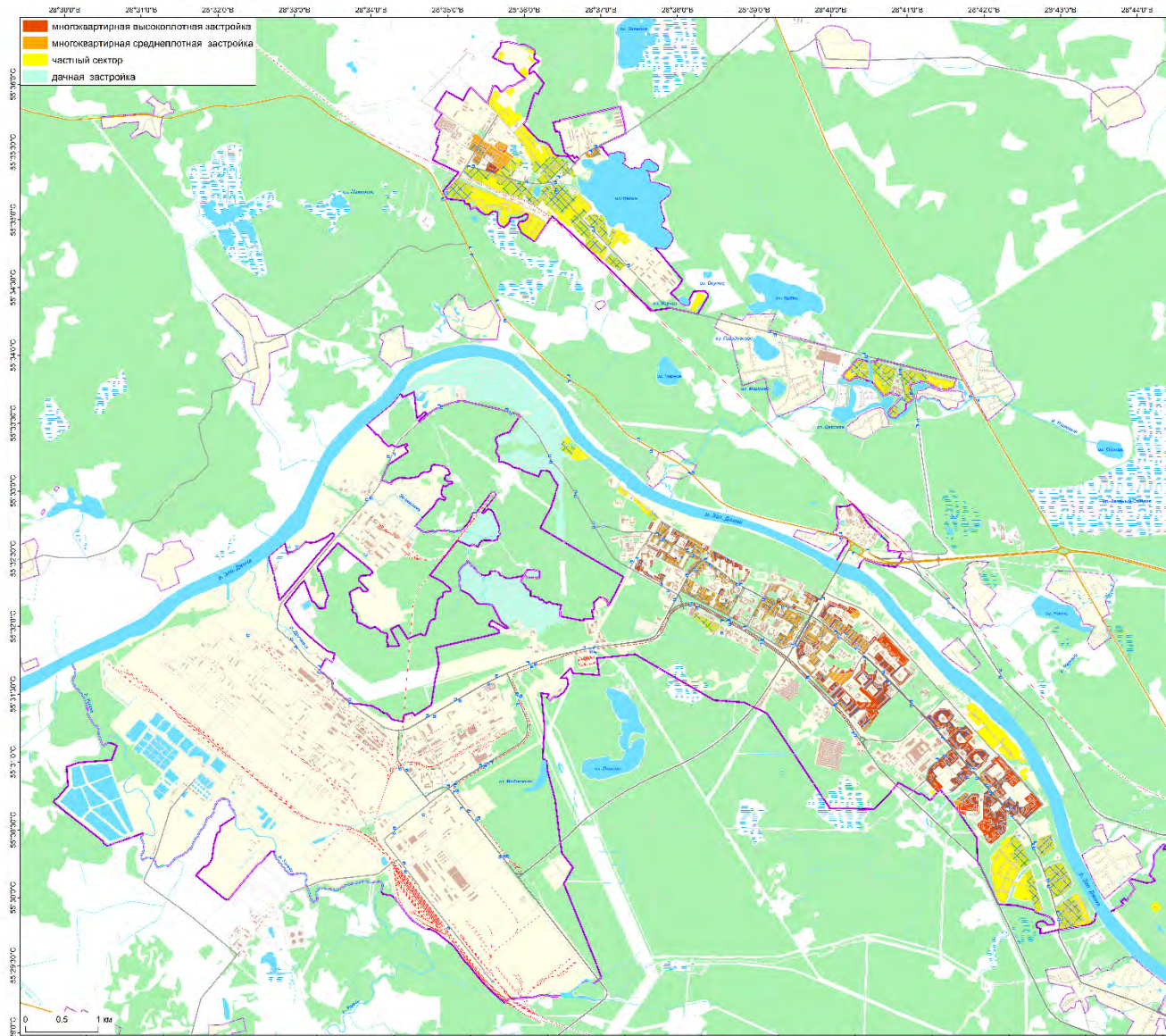


POLOTSK



NOVOGRUDOK

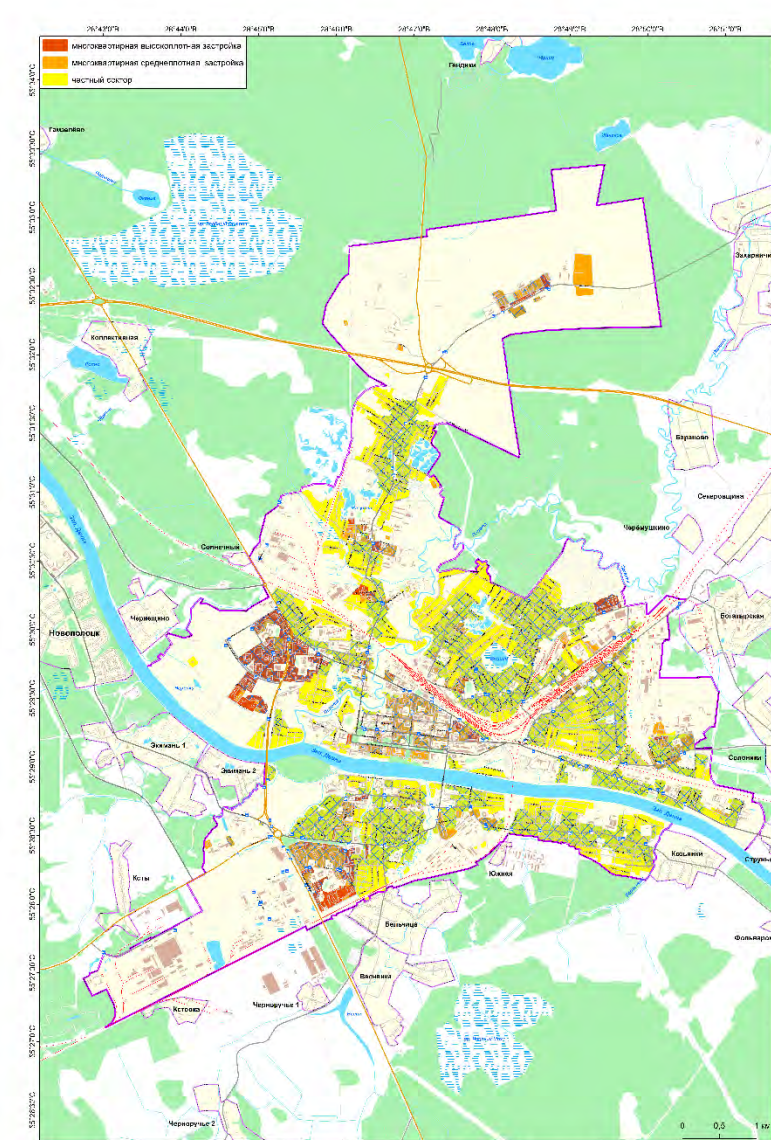
**ОСТАНОВКИ ОБЩЕСТВЕННОГО ТРАНСПОРТА.  
300-МЕТРОВАЯ ЗОНА ДОСТУПНОСТИ ОБЩЕСТВЕННОГО ТРАНСПОРТА**



ОСТАНОВКИ ОБЩЕСТВЕННОГО ТРАНСПОРТА.  
300-МЕТРОВАЯ ЗОНА ДОСТУПНОСТИ ОБЩЕСТВЕННОГО ТРАНСПОРТА



NOVOPOLOTSK



ОСТАНОВКИ ОБЩЕСТВЕННОГО ТРАНСПОРТА.  
300-МЕТРОВАЯ ЗОНА ДОСТУПНОСТИ ОБЩЕСТВЕННОГО ТРАНСПОРТА



POLOTSK



*"To be.... or not be a smart sustainable city... It's not a question anymore."*

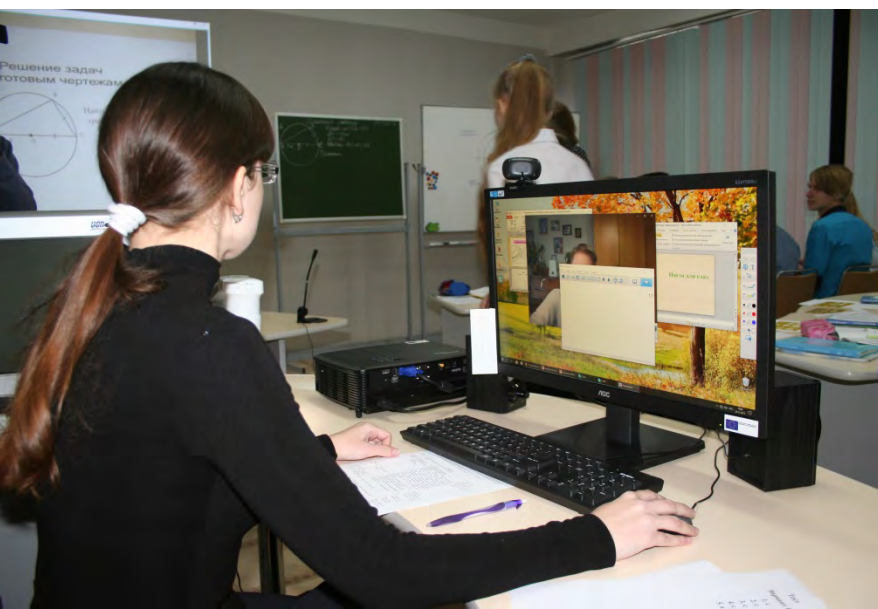
NOVOGRUDOK  
NOVOPOLOTSK  
POLOTSK

Теперь доставка осуществляется  
в радиусе 15 км от городов  
Брестской и Гродненской областей



**dostavka.by**  
онлайн-гипермаркет

Полоцк и Новополоцк  
**Gorod214.by**  
◀ Новости - Афиша ▶





# THANKS FOR ATTENTION!



UNDP-GEF-Ministry of Nature Project  
«Belarus: Supporting Green Urban Development in Small and Medium-Sized Cities in Belarus»

Polina Vardevanyan, indicator screening expert, [polinavard@gmail.com](mailto:polinavard@gmail.com)

Dmitry Kurlovich, GIS mapping expert, [kurlovich@bsu.by](mailto:kurlovich@bsu.by)