



# Session 8: Introduction of Telecommunications Equipment Network Access License(NAL)

Jian Wang



Course Objectives: Brief introduction of China's certification system for equipment (NAL)

Agenda: 9:00-9:30AM, **14-Oct-15**



Main Body:



# Outline

- **What is NAL**
- How to apply for a NAL
- Obligation and Post-license supervision

# Establishment of NAL



Year  
2000

- <Telecommunications Regulation of PRC>  
(The Decree of the State Council No. 291)

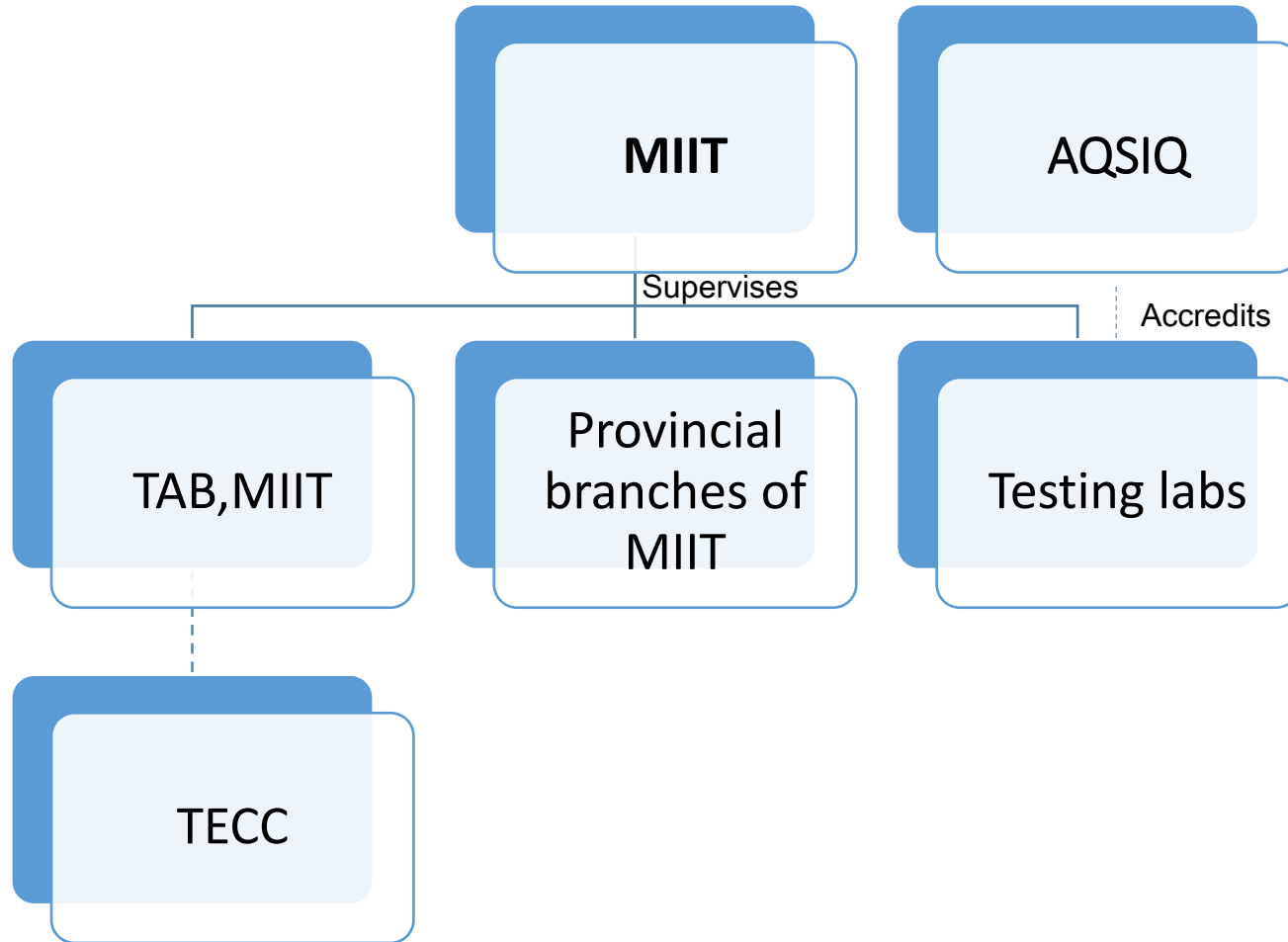


Telecommunications terminal equipment, wireless communication equipment and equipment used in network interconnection shall be subject to a state-implemented license system for connecting to the public telecommunications networks.

What for

- interconnection
- Network & information security
- Interests of users and carriers

# Related agencies



## Category



### Terminal equipment

- connected at the terminals of the telecom networks
- providing the consumers with the functions of sending and receiving information

### Wireless communication equipment

- use radio as the means of communication

### Equipment used in network interconnection

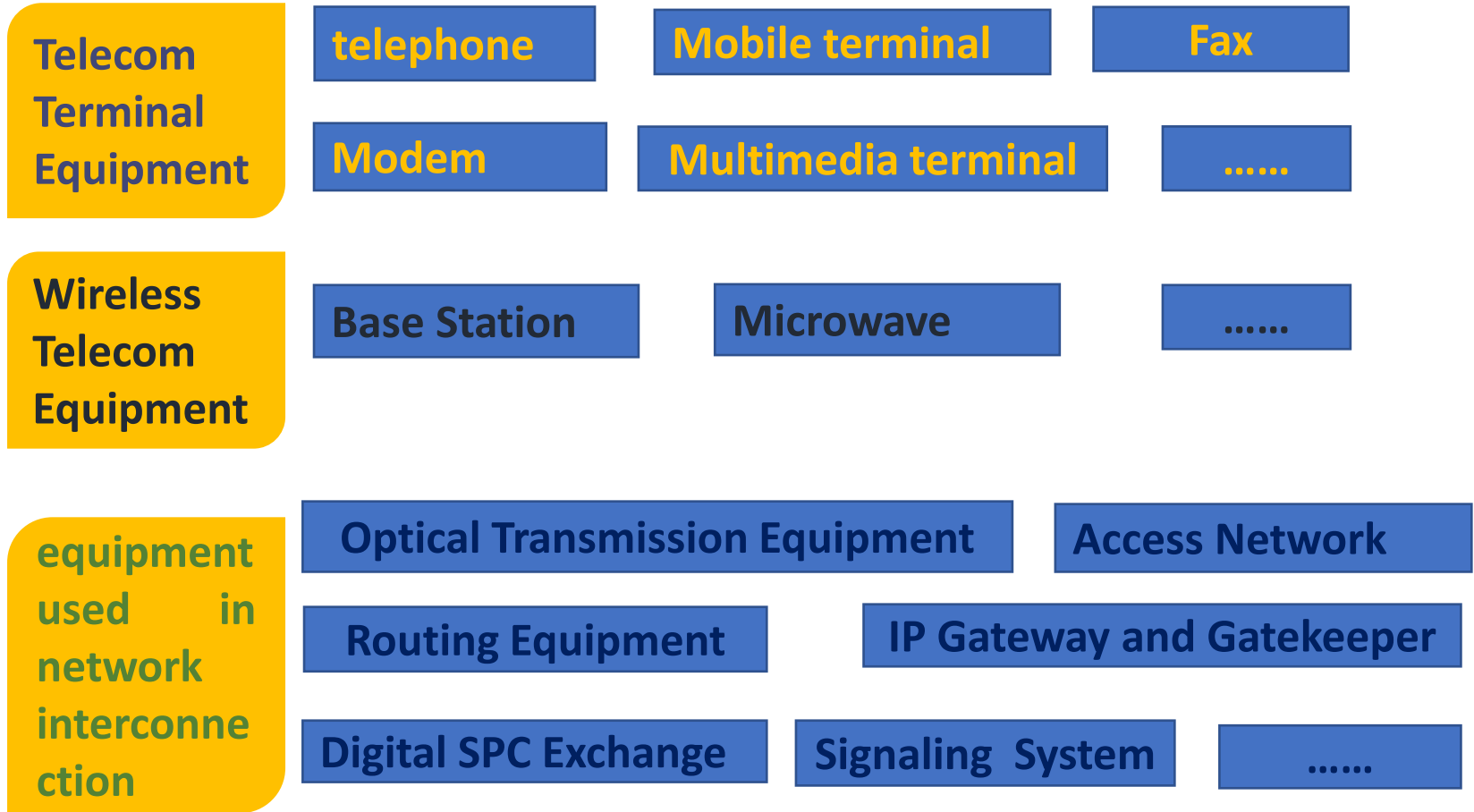
- between the networks of different operators
- between the networks of different telecommunication businesses

catalog shall be formulated and promulgated by MIIT jointly with AQSIQ.

# Category



Connecting Public Telecommunication Network's





# Conditions of Approval



meet the state and industry standards and provisions of MIIT

have sufficient quality assurance system and after-sale service measures

\*have been experimented for at least three months

meet other relevant state laws and regulations

- \*Wireless equipment, equipment used in network interconnection and the new equipment
- \* equipment that IS subject to NAL yet there is no state standards and industry standards

- MIIT issued 《 Notice on Strengthening the Network Access Management of Smart Mobile Terminals 》 on Apr 1<sup>st</sup>, 2013.
- To safeguard users' personal information security and lawful rights and interests, guarantee cyber and information security
- Shall conform to the basic requirements of industrial standards concerning smart mobile terminal security.

**May not preinstall application software having the following characteristics:**

- that collects or alters users' personal information without authorization
- that uses the terminal's telecommunications function without authorization
- that influences the regular functioning of the terminal or the safe operation of networks
- that contains illegal content

# Outline

- What is NAL
- **How to apply for a NAL**
- Obligation and Post-license supervision

# The Documents of Applications



**9 documents should be submitted**

- Application
- Business License
- Introduction of the Applicant
- Certificate of Quality System Certification
- Introduction of Telecom Equipment
- Test Report**
- Type Approval Certification (Radio Transmission Equipment)
- the overall technological schemes and experiment reports
- Documents required by other relevant regulations

# Procedures



## Procedure of Acceptance

- ◆ Telecommunications Equipment Certification Center
- ◆ 5 working days
- ◆ complete and in conformity with the statutory form

## Expert Evaluation

- ◆ Wireless equipment, equipment used in network interconnection and the new equipment
- ◆ be organized by TECC within 45 days
- ◆ the time needed not be reckoned in the time limit

## Procedure of Making-decision

- ◆ examine the application documents within 60 days
- ◆ issue NAL if meeting the requirements
- ◆ send written replies to the applicant

## Modification

- ◆ technological or exterior changes
- ◆ contents prescribed in the NAL have been changed

## Renewal

- ◆ apply for the NAL over again 3 months before the NAL expires
- ◆ return the former license.

# License & Label



Valid Term	3 years	Less than 1 year
License		
NAL label		

MIIT publishes the list of equipment and manufacturers which have obtained the network access licenses every 2 weeks on its website.



## Other things you may be interested



- Foreign applicant should authorize a domestic agency to submit the application.
- The applicant may submit the application in person, by mail or online.
- Documents should be written in Chinese.

# Outline

- What is NAL
- How to apply for a NAL
- **Obligation and Post-license supervision**

# Obligation



## NAL Label

- bearing NAL label.

## Consistency of equipment

- before and after obtaining the network access license.

## Indicating the number of NAL

- on the packages and in the published advertisements.

# Inspection and Supervision



## Annual inspection

- the provincial branches of MIIT
- submit the Annual Inspection Form at the beginning of the December every year

## Post-license Supervision

- MIIT
- to check consistency of equipment before and after obtaining the network access license



Exam questions:

1. What kinds of equipment is subject to NAL?
2. Is there any similar certification systems with NAL in your country?  
What's the purpose of it?
3. In your opinion, could it be a effective way to protect personal information by regulating smart mobile terminals? Why?

Please send your answers to [wangjian@caict.ac.cn](mailto:wangjian@caict.ac.cn) before Day 5.



- (Trainer information)
- Trainer: JIAN WANG
- E-mail: [wangjian@caict.ac.cn](mailto:wangjian@caict.ac.cn)
- Department: Telecommunications Equipment Certification Center, MIIT
- Address: No.28 , XINJIEKOU WAIDAJIE, XICHENG DISTRICT, BEIJING



THANK YOU!

中国信息通信研究院 <http://www.caict.ac.cn>