



# Conformance test introduction

CTTL-Terminal GTE  
Zhong Nan



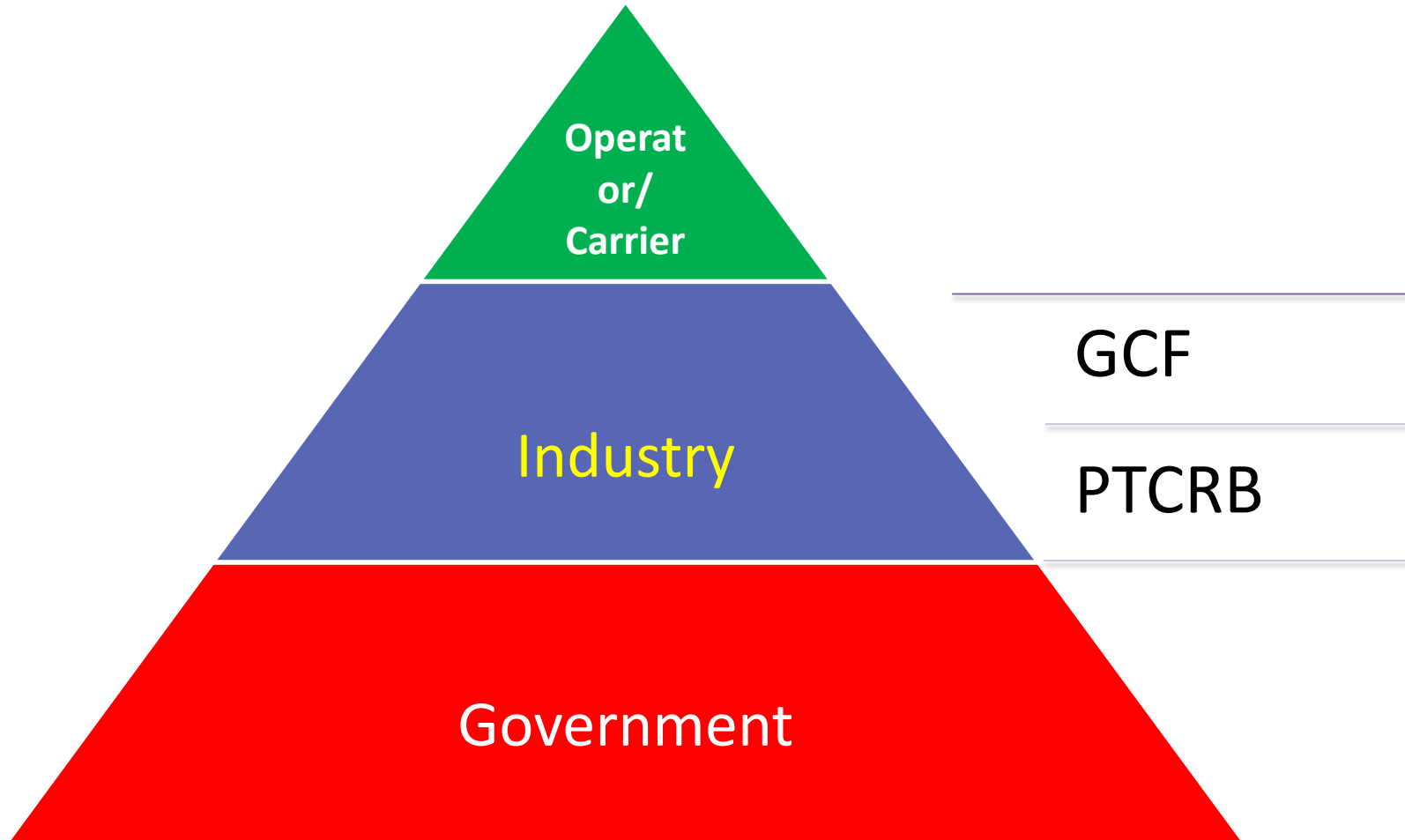


## Content

- General
- GCF and PTECRB Certification
- Conformance Test Content and specification



# General

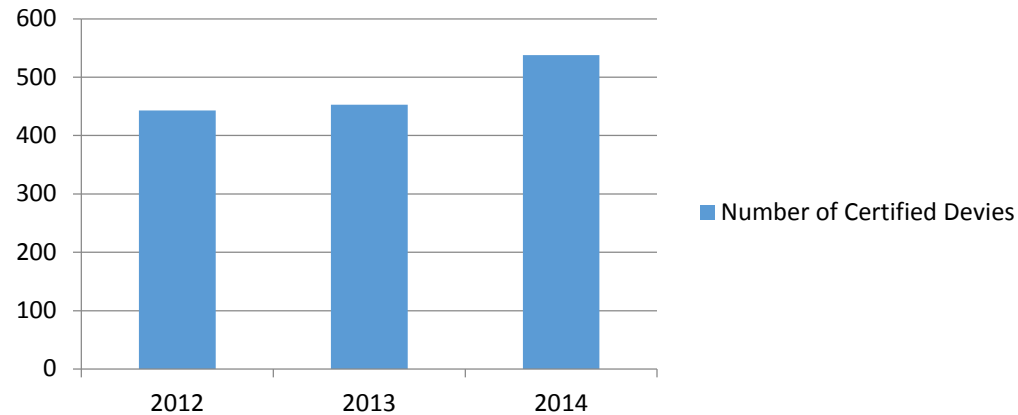




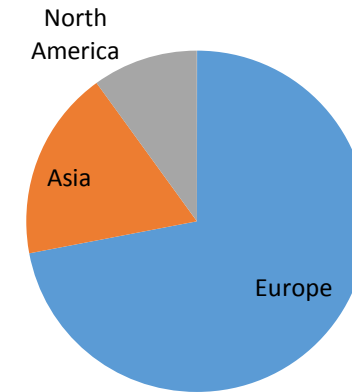
# GCF (Global Certification Forum)



**GCF Certified Devices**



Test once,  
use anywhere

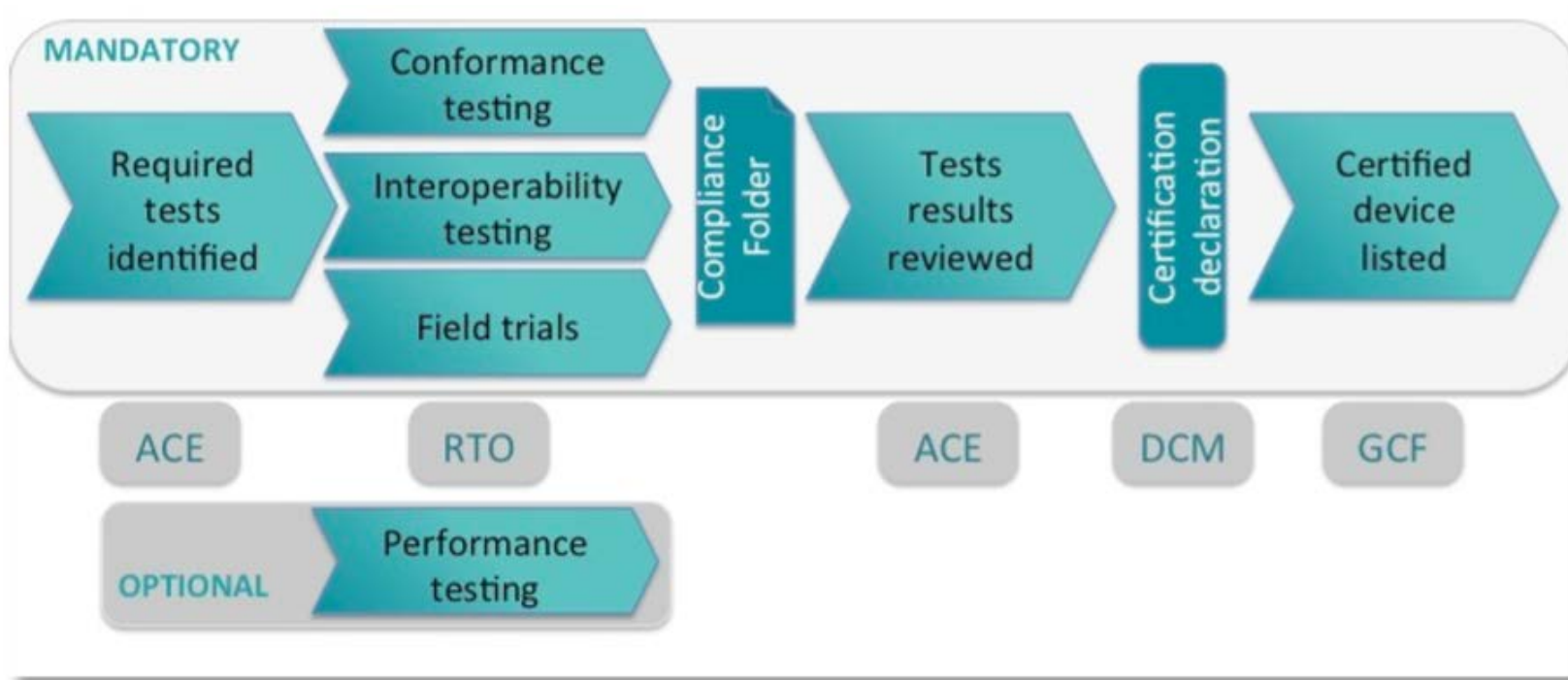


This process is recommended for all manufacturers who wish to have their devices operating within the areas served by registered Operators, as all registered Operator full members require Certification





- Certification procedure of GCF

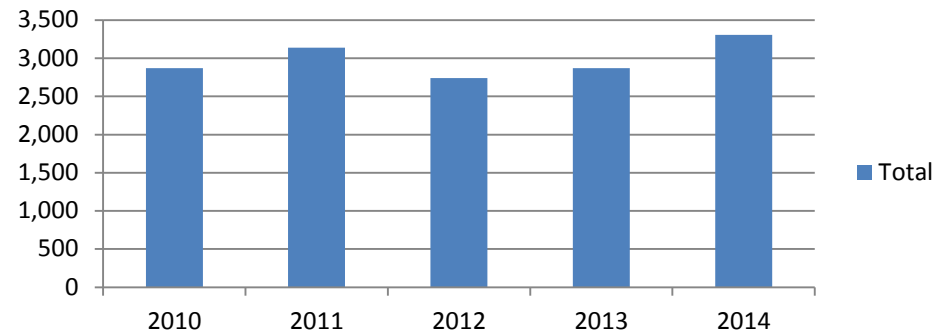




PTCRB (PCS Type Certification Review Board )



**Total Number of PTCRB Certified Devices**



North America

A voluntary process by which all products are technically evaluated to meet the minimum requirements for registered Operators' networks.





PTCRB (PCS Type Certification Review Board )



---

End Products

---

Modules

---

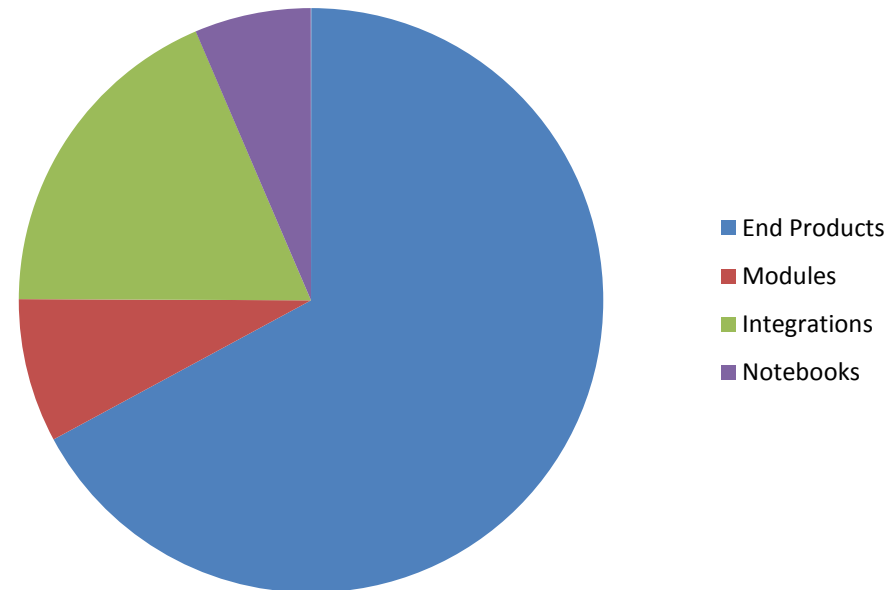
Integrations

---

Notebooks

---

**Device type in 2013**



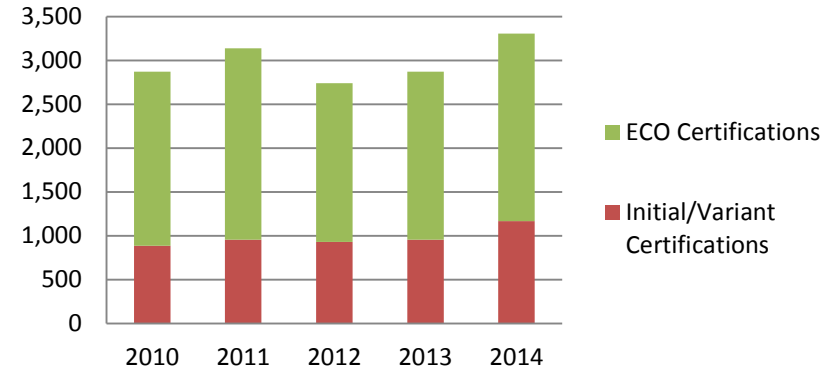


# Certification procedure of PTCRB



- Manufacture
  - Certification Request Submission
    - Required information
  - Selection of Accredited Test Lab
  - Declarations
- Accredited Test Laboratory
  - Execute Test
  - Report

**PTCRB Certified Devices**





# Certification Technical Requirement



NAPRD03

GCF-CC

Description for the technical requirements for Device Certification.

Intended to advise accredited laboratories and administrations on how to establish terminal equipment conformity with the reference specifications



# Certification Technical Requirement



NAPRD03

GCF-CC

## Version

- Format
- Applicability

- UEs submitted for certification are required to complete the execution of all applicable tests approved and published in one of the two most recent versions of NAPRD03 as of the date the mobile is to complete certification.

- V x.y.z
  - The first number indicates the main version number
  - The middle number is the major revision number
  - The last number is the minor revision number



# PTCRB/GCF technical requirements



## Test cases

Category "A":	Test fully available and fully validated, testing at an accredited test laboratory required
Category "B":	Testing at an accredited test laboratory with exceptions
Category "D":	Test is downgraded and is not a certification requirement
Category "E"	Test case is validated and results are provided to CTIA. Failure of DUT to pass test case will not cause loss of certification.
Category "N"	Not applicable
Category "P"	New test case not yet validated or a test case that has been downgraded for more than 45 days.



PTCRB TEST  
CASE STATUS

Category "A":	based on tests which have been specified by an appropriate SO and validated on commercially available test equipment
Category "B":	based on tests which have been specified by an appropriate SO and validated on commercially available test equipment with exceptions
Category "C":	based on tests which have been specified by an appropriate SO and validated on commercially available test equipment, but do not yet meet the Work Item or Test Case certification entry criteria
Category "D":	based on tests which have been specified by an appropriate SO from which validation or full status has been removed
Category "P"	based on tests which have been specified by an appropriate SO and not validated on commercially available test equipment
Category "N"	Test not applicable



GCF TEST CASE  
STATUS



# PTCRB/GCF technical requirements

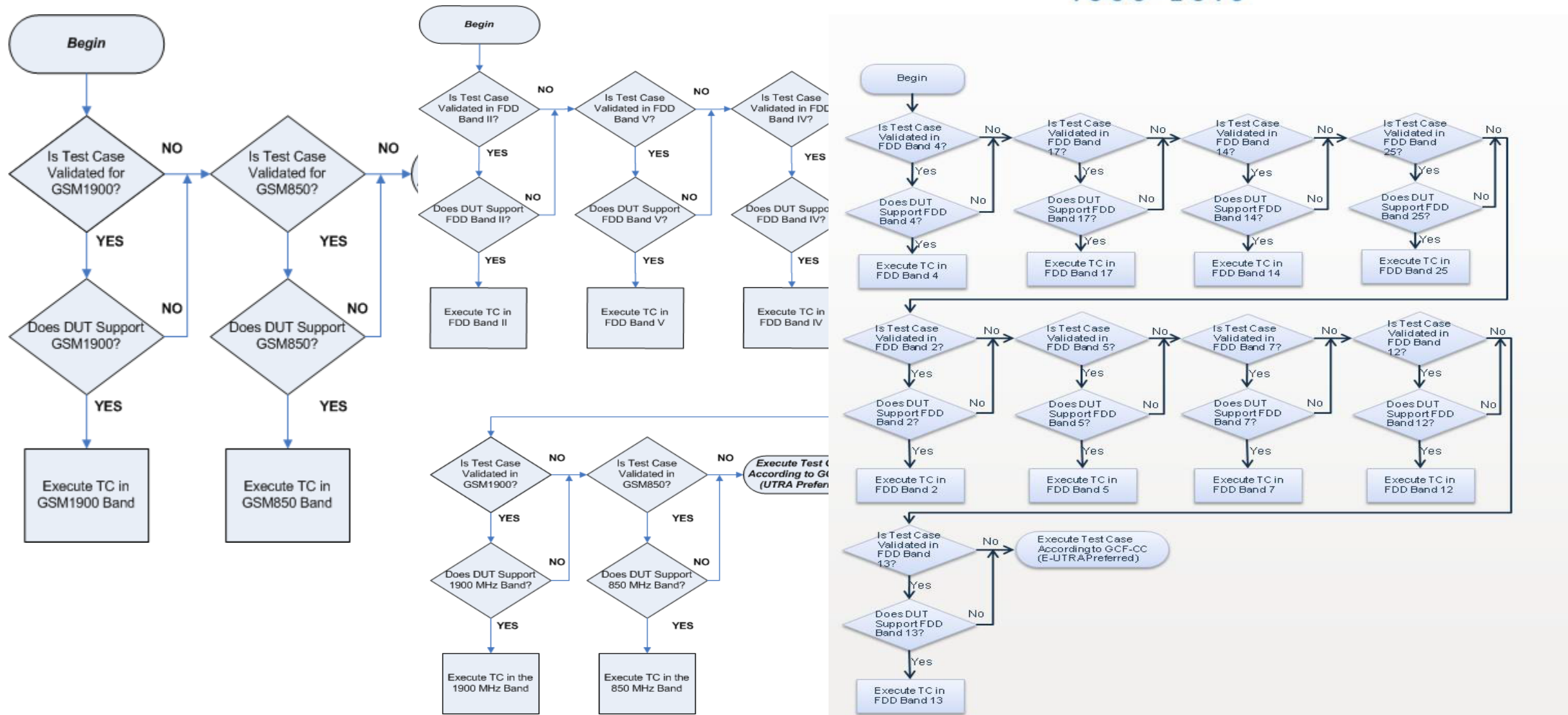


## Test Frequency Band

ALL	<ul style="list-style-type: none"><li>the mobile shall be tested in all required Bands</li></ul>
Single	<ul style="list-style-type: none"><li>that the applicable test case (e.g. protocol testing) must be tested according to the rules</li></ul>
I-RAT Single	<ul style="list-style-type: none"><li>shall be tested in a single band combination.</li></ul>
Multi	<ul style="list-style-type: none"><li>that a band combination is required</li></ul>
Blank	<ul style="list-style-type: none"><li>the test does not require a bearer</li></ul>
RAT All	<ul style="list-style-type: none"><li>that the applicable test case must be tested once in each supported RAT and in accordance with the rules</li></ul>



# Frequency Band Selection





# PTCRB/GCF technical requirements



## Test Platform

- Accredited labs must use approved test platforms as listed on TC Database



PTCRB TP



GCF TP





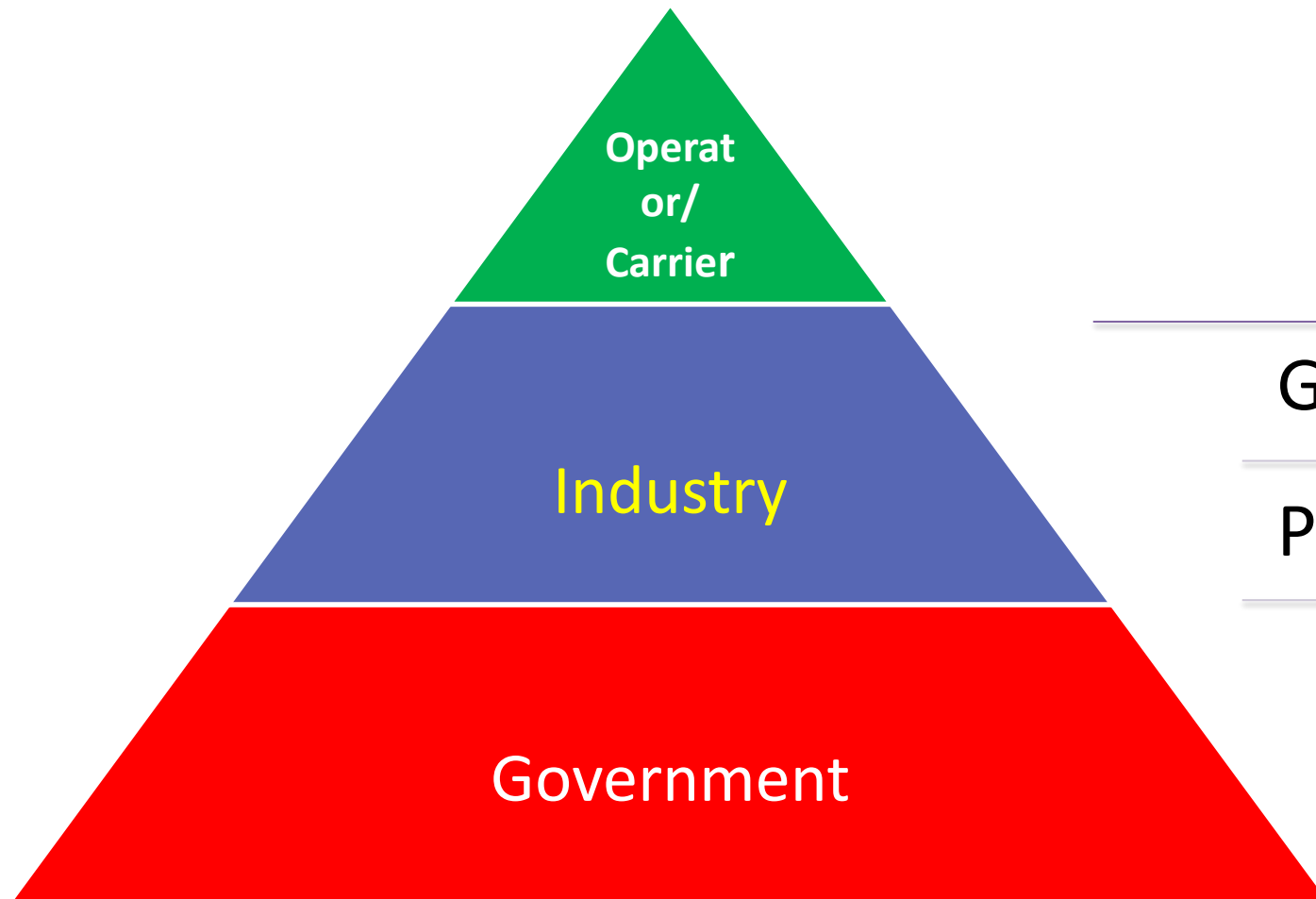


## Content

- General
- GCF and PTECRB Certification
- Conformance Test Content and specification



# General



GCF

PTCRB

Conformance Test

OTA

Performance Test

Field Trail

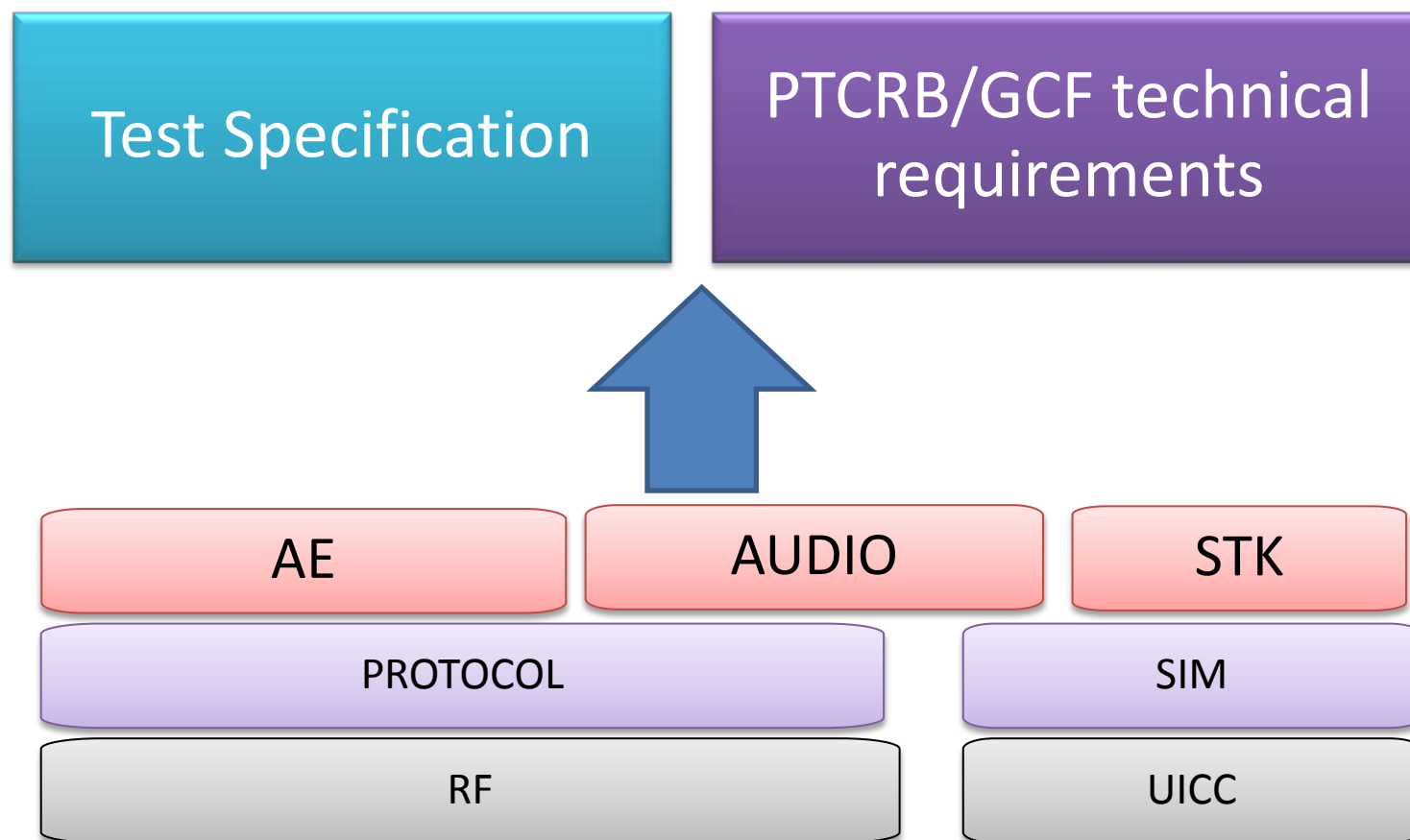
Conformance Test

OTA

RSE



# Test Content





# PICS and Test Plan



## PICS- Protocol Implementation Conformance Statement

- Contents of the UE capability Information Elements



PICS 3GPP  
TS51.010-2



PICS 3GPP  
TS36.523-2

## Test Plan

- List of all the test cases need to be reported



LTE PROTOCOL  
TEST PLAN



LTE RF/RRM  
TEST PLAN



# Test Content



## RF

- transmission and reception
  - Phase error
  - Frequency error
  - Power
  - Channel rejection
  - Blocking
- Radio resource management
  - Cell Re-selection
  - Handover
  - Re-establishment
  - Random Access

GSM
<ul style="list-style-type: none"><li>• 3GPP TS 51.010-1<ul style="list-style-type: none"><li>• Chapter 12-14, 16, 21,22</li></ul></li></ul>

WCDMA
<ul style="list-style-type: none"><li>• 3GPP TS34.121-1</li></ul>

LTE
<ul style="list-style-type: none"><li>• 3GPP TS36.521-1 – RF</li><li>• 3GPP TS36.521-3 – RRM</li></ul>



# Test Content



## UICC

- Physical characteristic
- Electrical characteristic
- Logical test



GSM	WCDMA	LTE
<ul style="list-style-type: none"><li>• 3GPP TS 51.010-1</li><li>• Chapter 27</li></ul>	<ul style="list-style-type: none"><li>• ETSI TS102 230/102 384</li></ul>	<ul style="list-style-type: none"><li>• ETSI TS102 230/102 384</li></ul>



# Test Content



## PROTOCOL

- Idle mode operations
- Layer2 signaling Procedure
- RRC connection management procedures
- EPS mobility management
- Circuit Switched Call Control (CC)
- EPS session management
- SMS
- E-call, ETWS

GSM
<ul style="list-style-type: none"><li>• 3GPP TS 51.010-1</li></ul>

WCDMA
<ul style="list-style-type: none"><li>• 3GPP TS 34.123-1</li></ul>

LTE
<ul style="list-style-type: none"><li>• 3GPP TS36.523-1</li></ul>



# Test Content



## SIM

- Subscription related tests ( IMSI/ TMSI, Access Control - identification)
- Security (PIN , FDN, AoC)
- PLMN
- Subscription independent tests(phonebook, SMS,MMS)

GSM	WCDMA	LTE
<ul style="list-style-type: none"><li>• 3GPP TS 51.010-1<ul style="list-style-type: none"><li>• Chapter 27</li></ul></li></ul>	<ul style="list-style-type: none"><li>• 3GPP TS 31.121 USIM</li></ul>	<ul style="list-style-type: none"><li>• 3GPP TS 31.121</li></ul>



# Test Content



## STK/ USIM APPLICATION

- Initialization
- Terminal profile
- SIM command (display test , get inkey, get input)
- Data download
- Call control/ SMS control

### GSM

- 3GPP TS 51.010-4 - STK

### WCDMA

- 3GPP TS 31.124 – USIM APPLICATION

### LTE

- 3GPP TS 31.124 – USIM APPLICATION



# Test Content



## AE

- MMS
- VT
- NFC
- DM

AE	
<ul style="list-style-type: none"><li>• OMA-ETS-MMS-1_3</li><li>• PoC</li><li>• IMTC-3G 324M VT</li></ul>	<ul style="list-style-type: none"><li>• OMA-ETS-DM-V1_2</li><li>• OMA-ETS-SUPL-V1_0/V2_0</li><li>• ETSI TS 102 694/102 695 SWP/HCI</li></ul>



## Questions:

1. Which part of all the conformance test content have the longest test duration?
2. What rules does the test lab follow to decide the test frequency and test cases?





(Trainer information)

Trainer: Zhong Nan

E-mail: zhongnan@catr.cn

Department: CTTL GTE

Address: No.1212 Floor 12,Shouxiang Science Building,No.51 Xueyuan Road, Haidian District, Beijing, P.R.China 100191





# THANK YOU !

中国信息通信研究院 <http://www.caict.ac.cn>