

Organized by



Supported by



MINISTRY OF DIGITAL DEVELOPMENT,  
INNOVATION AND COMMUNICATIONS



COMMUNICATIONS  
REGULATORY COMMISSION  
OF MONGOLIA



MOBICOM NETWORKS LLC  
Simple through smart



# ITU - ITTLLDC Seminar – 2025

B.Otgonchimeg (Ph.D)  
CEO of Mobicom Networks

*28 – 29 August 2025  
Ulaanbaatar, Mongolia*



# MONGOLIA

Capital: Ulaanbaatar  
Neighboring countries: Russia and China



	<b>GDP (US\$)</b> 23.6 billion (2024)	<b>GDP Per Capita (US\$)</b> 6,654 (2024)		<b>Population</b> 3.5 million (2024)		<b>Median Age</b> 26.9 (2024)
---	--	--	---	---	---	----------------------------------

## Telecommunication service in ICT market

	<b>Internet penetration</b> 84.3%*		<b>Mobile users</b> 4.89 mln*		<b>4G/LTE users</b> 4 mln*		<b>5G Launched</b> in May 2025		<b>Data usage</b> 262,102TB*
---	---------------------------------------	---	----------------------------------	---	-------------------------------	---	-----------------------------------	---	---------------------------------

	<b>Transmission line</b> 55,540 km* 78% FO		<b>Wholesale capacity</b> 750G*		<b>Transit capacity</b> 2.2TB*
---	--	---	------------------------------------	---	-----------------------------------

\*data source: CRC statistic report 2024

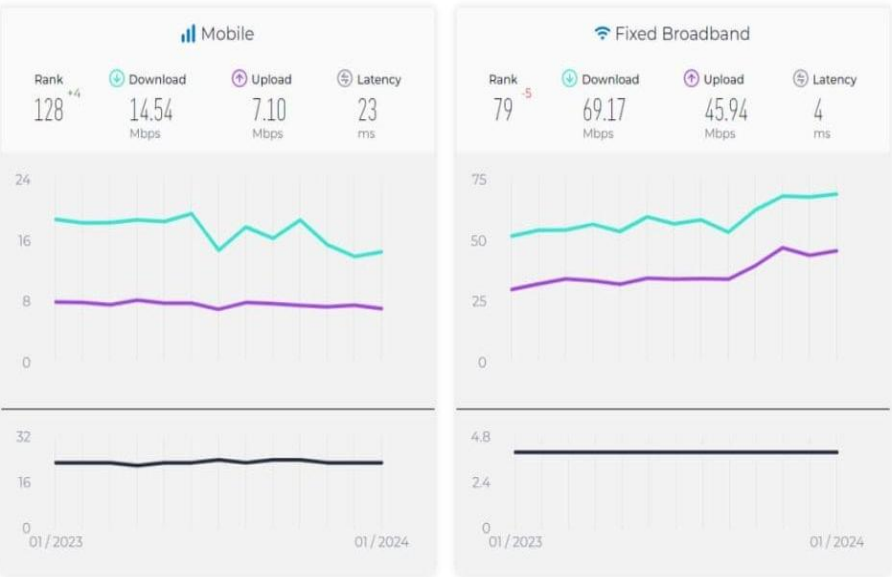
# MONGOLIAN INTERNET SPEED AND PRICE COMPARISON



Mongolia stands out among LLDCs and globally for offering low-cost internet across both fixed and mobile platforms. This is likely a result of strategic factors like **competition**, **regulatory environments**, and **investments by private sectors**

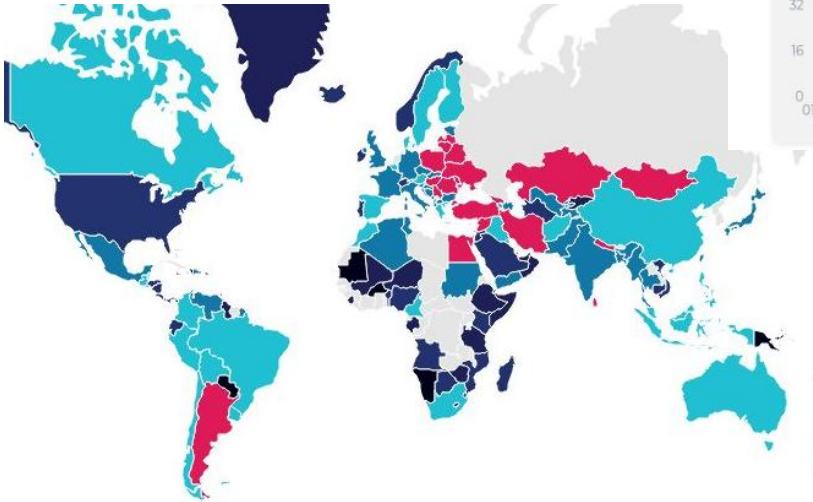
Internet speeds in Mongolia are moderate by global standards

← Mongolia Median Country Speeds January 2024



Wholesale internet costs in Mongolia averagely 30-35% higher compared to many others

Region/Market	Approximate Wholesale Cost (USD per Mbps/month)
U.S. / Western Europe	\$0.15 – \$0.22
100 GigE in major hubs	As low as \$0.06
Sydney	~\$2.50
India	~\$4.70



● \$5-\$20 ● \$20-\$40 ● \$40-\$60 ● \$60-\$100 ● \$100-\$200 ● \$200+

Mobile & Fixed data and Internet price in Mongolia is less than global average

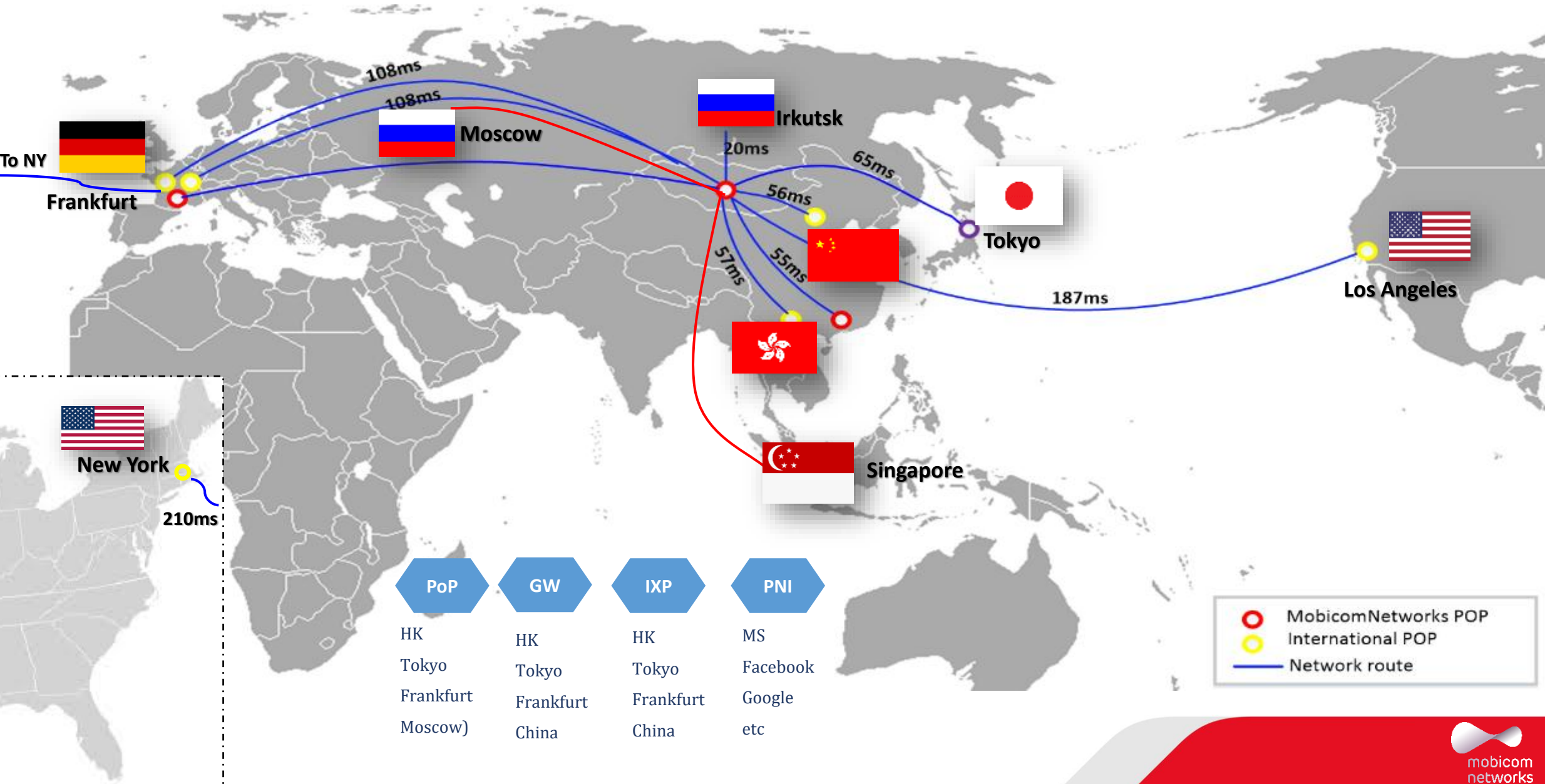
Service Type	Mongolia Avg Price	Global Rank/Position
Fixed Broadband	~US \$11.68/month	~13th cheapest worldwide
Mobile Data	US \$0.38–0.74 per GB	~23rd–30th cheapest globally

- ✓ Mongolia is indeed a unique example among landlocked developing countries because it borders two large neighbors—Russia and China—both of which have relatively well-developed and resilient network infrastructures. This does provide Mongolia with some advantages compared to many other LLDCs.
- ✓ Cross border connections completed with Chinese carriers including **CTG, CUG, CMI**, and Russian carriers including **Megafon** and **TTK**
- ✓ ERMIC (Europe–Russia–Mongolia–China) system is a terrestrial cable network linking Europe to China via Russia and Mongolia. It offers an alternative, shorter path to submarine communications cables, enhancing connectivity between Asia and Europe.

- ✓ DWDM/OTN 1+1 protected backbone network
- ✓ Most reliable fully protected network over diversified cable route
  - ✓ Service Availability: 99.9%
  - ✓ RTD : ~10 ms

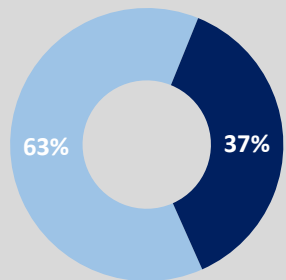
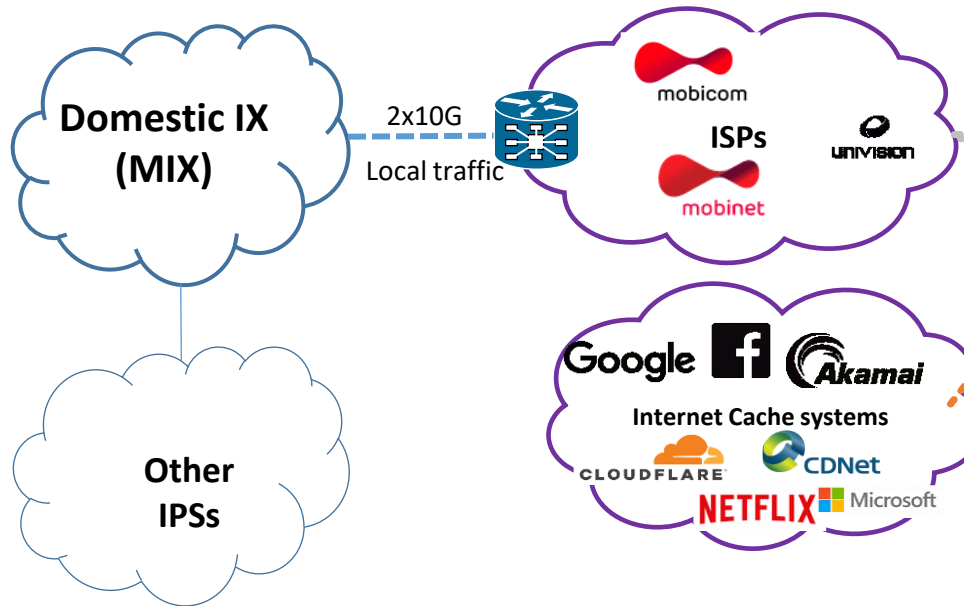






# GATEWAY & CORE NETWORK TOPOLOGY of MCNW

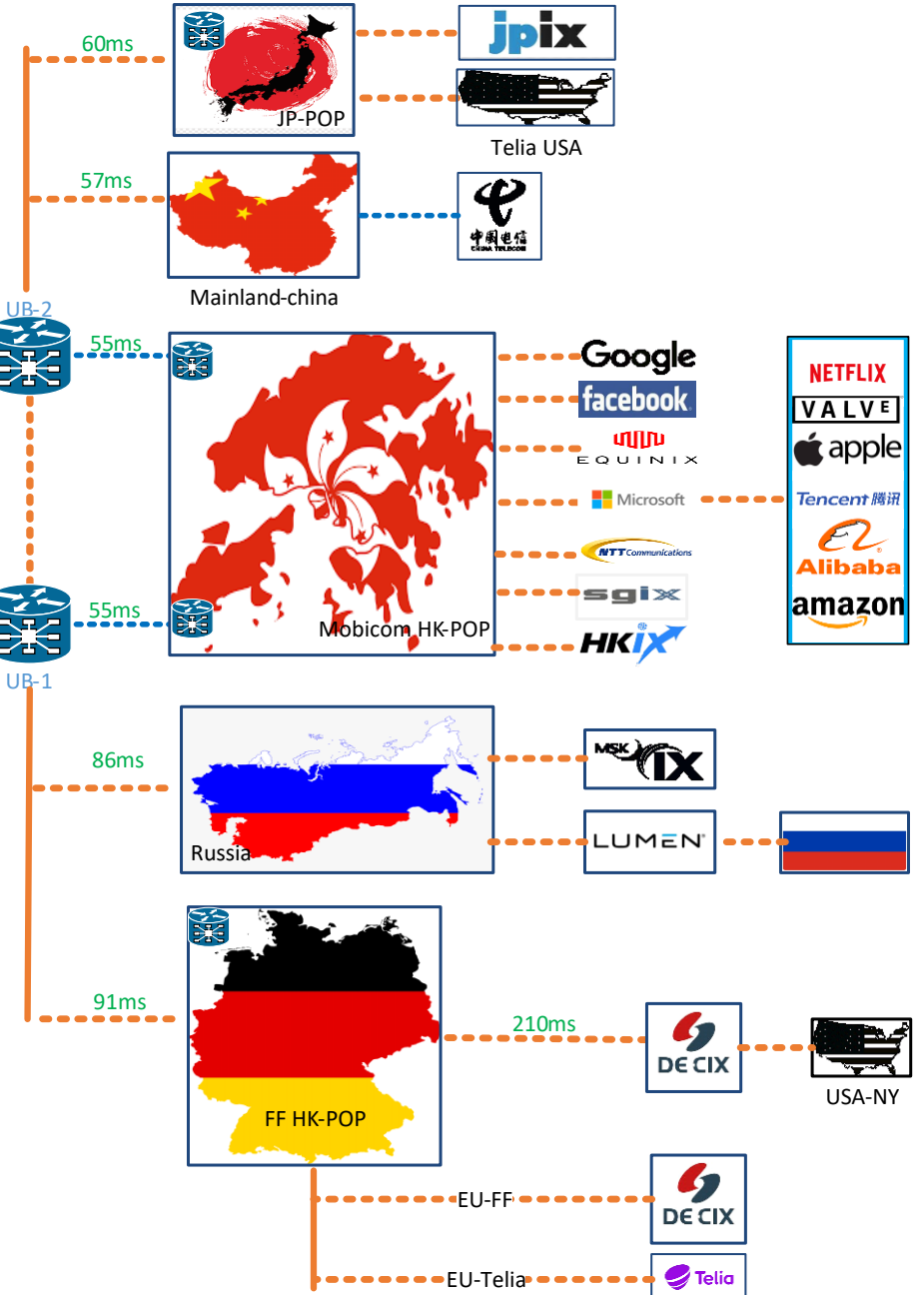
- Hosting CDNs and regional data centers within or near LLDCs reduces dependency on international transit.
- By keeping popular content (YouTube, Facebook, Netflix, software updates, etc.) cached locally, overall reliance on fragile international links decreases.



■ Cache traffic ■ Internet traffic

## Need support of International organization

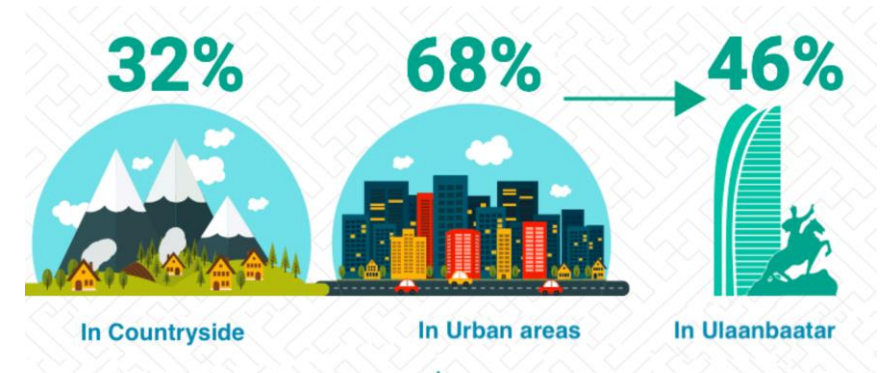
- Popular OTT's traffic is high
  - Cashing traffic is 2 times higher than international
- However, CDNs policy and minimum traffic requirement is high compared with low population like Mongolia



# SATELLITE CONNECTIVITY (LEO/MEO CONSTELLATIONS) MATTER

## Need support of International organization on Satellite connectivity

- These can serve as backup links when terrestrial routes fail and useful for digital divide in rural area and beneficial for nomadic culture and tourism
- Limited accessibility of LEO systems (e.g., OneWeb, Amazon Kuiper, Telesat Lightspeed etc... provide lower latency and higher bandwidth than traditional GEO satellites.
  - Only Starlink available in Mar 2024, and 71<sup>st</sup> country in the world
  - But no gateway station due to high investment, it occurs higher latency, high cost and information security
  - Difficulty to build Mobile Backhaul, only internet connectivity



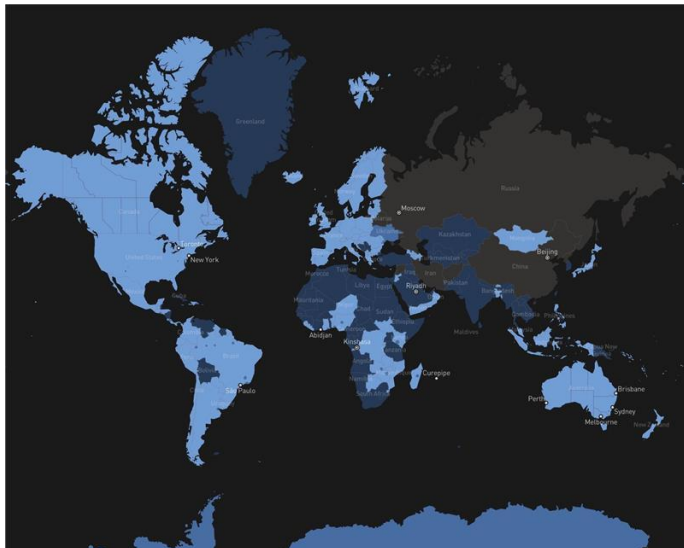
Before



After



Mobicon Networks terminated GEO satellite mobile backhaul in Mar 2025 after 20 years





# ABOUT US



- Coverage: 99% of the population
- Customers: 1.75 million (48.6% of the population)



- TV, Home Broadband Service, Video Streaming
- TIER III Standard Data Center
- Over 40 International Partners



- National Payment Solution & Digital loan
- 2.6 million Application Download



- 10,500km Fiber Optic
- International Transit Service



- GoGo.mn: Leading Online Media Provider
- MAAMUU & NOGUN: National Best Content Award for Maamuu
- Mongol Music: A music distribution platform featuring officially licensed works from Mongolian bands, singers, and artists







# THANK YOU

Simple through smart