

Regional Dialogue Session 9: Digitally Accessible Asia Pacific

Towards building inclusive digital communities

9 December 2021

Roxana WIDMER-ILIESCU

*Senior Coordinator for Digital Inclusion
ITU/HQ*

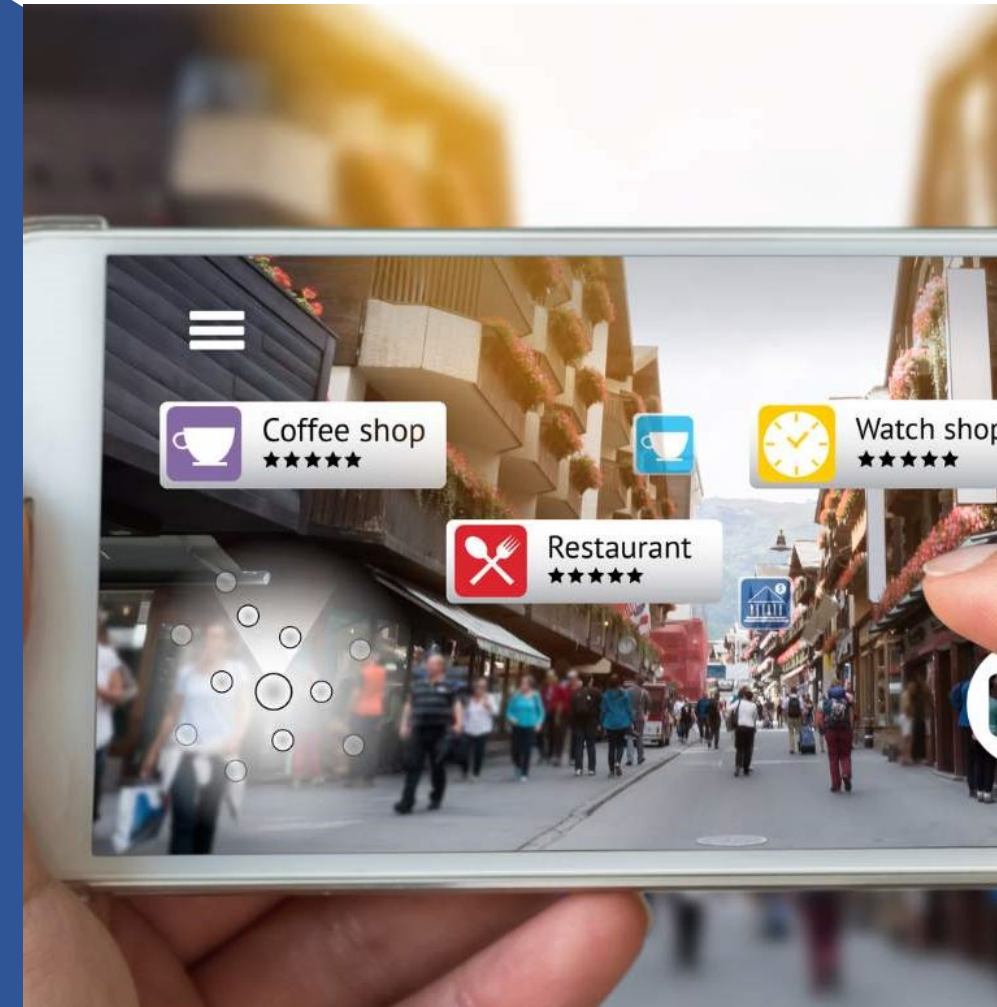
Sean Sharidz DORAL

*Programme Officer,
Regional Office for Asia and the Pacific*



WHY?

- Digital transformation is present in all aspects of our lives
- Digital transformation is about people, so it requires a human-centred approach
- Digital technologies and digital environments should meet everyone's needs
- The key element to successfully achieve this digital transformation is to ensure **inclusiveness**



HOW?

Global commitments to reduce inequalities a win-win for all

- ✓ The implementation of ICT accessibility policies and strategies will support the development of more equal, equitable and inclusive societies.
- ✓ **Accessible ICTs are key enablers to ensure that no one is left behind in the digital world.**

ITU Strategic Goal 2: Inclusiveness

Target 2.9 : *“Enabling environments ensuring accessible telecommunication / ICT for persons with disabilities should be established in all countries by 2023”*



To date:

184 countries have ratified

164 countries have signed

CONVENTION
ON THE RIGHTS
OF PERSONS
WITH DISABILITIES

HOW?

...to successfully ensure digital inclusion for everyone regardless of gender, age, ability or location?

Accessibility - the key pillar to implement digital inclusion for all

The 6 A's

DIGITAL INCLUSION



FOR ALL

Accessibility

Adoption of policies, regulations, standards, guidelines and good practices



Accessible ICTs: devices, products and services, e-government, e-health, e-education, etc.



Appropriation, digital literacy and knowledge skills



Affordability: Internet and devices



Access/digital infrastructure:
Internet connectivity, broadband, networks

WHAT?

Should be one to achieve national, regional and global implementation of ICT accessibility as a mean to ensure that no one is left behind in the digital age

- ✓ **Raise awareness**
- ✓ **Develop capacities**
 - ❖ Learn how to achieve digital inclusion
 - ❖ Learn about ICT accessibility as a catalytic driver to inclusion
 - ❖ Learn how to communicate in digital accessible formats
 - ❖ Create knowledge platforms for all stakeholders to share challenges and good practices
- ✓ **Develop inclusive, accessible, age- & user-friendly digital environments and communities**
 - ❖ Adopt ICT accessibility policies and strategies
 - ❖ Comply with accessibility requirements and standards
 - ❖ Use ITU tools and resources to facilitate implementation
 - ❖ Make regular assessment and monitor ICT accessibility implementation in their countries and regions
- ✓ **Mainstream ICT accessibility at all levels and by all stakeholders**
- ✓ **Ensure involvement of end-users, persons with disabilities in all the above**

ITU Resources

Toolkits, Guidelines, Reports, Trainings, video tutorials to support ITU Members' national, regional and global efforts in building digitally accessible environments and communities:



Scan QR for ITU-D resources on ICT accessibility

ITU Publications

International Telecommunication Union
Development Sector

Towards building inclusive digital communities

ITU toolkit and self-assessment for ICT accessibility implementation



ITU Publications
Study Period 2018-2021



Committed to connecting the world

SUSTAINABLE DEVELOPMENT GOALS

What would you like to search for?

Home General Secretariat Radiocommunication Standardization Development ITU Telecom Members' Zone Join ITU

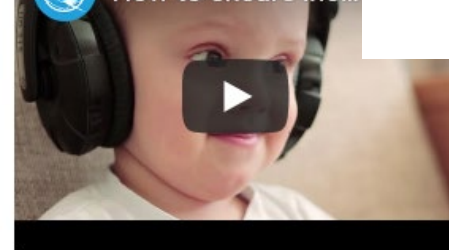
ITU Guidelines on how to ensure that digital information, services and products are accessible by all people, including Persons with Disabilities during COVID-19

Study Group 1 Question 7

Access to telecommunication/ICT services by persons with disabilities and other persons with specific needs



ITU How to ensure inc...



ITU Academy
Empowering minds

Home | About | Centres of Excellence | Training courses | Main activities |

ICT Accessibility: the key to inclusive communication
available in Arabic, English, French and Spanish

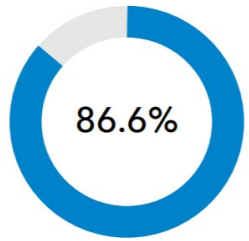
How to ensure inclusive digital communication during crises and emergency situations
available in English, French and Spanish

Web Accessibility: the cornerstone of an inclusive digital society
available in Arabic, English, French and Spanish

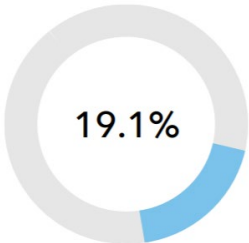
ICT/digital accessibility
The key to achieving a digitally inclusive world

Watch the video

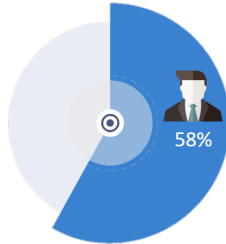
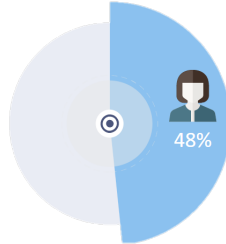
Digital Inclusion: with the focus on people with disability



Developed Countries



LDCs



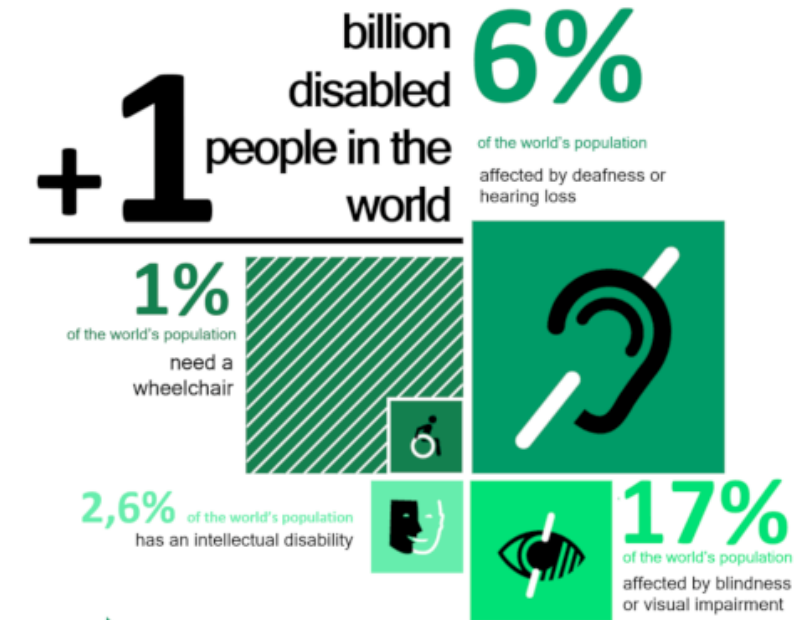
Gender

Only 41.3% of females are connected in the Asia Pacific



Youths

The youth labour force participation rates in Asia Pacific currently stands below 50 per cent



Bridging the Digital Divide

Below half of the total population in Asia Pacific have internet access

Demographic

15 per cent or **690m** people in Asia and the Pacific experience some form of disability

Technical Assistance and Activities in the Asia and the Pacific

Awareness Raising and Trainings

ASEAN-ITU Seminar on ICT Accessibility and Assistive Technologies for Equity in Society, 2014, Bangkok, Thailand



NCBM Training Programme participants with disabilities, 2021 October 4



Webinar- Regional Development Forum 2020

Session 7: ICTs for ALL

5 November
12:15 - 13:00 (BKK/JKT GMT+7)

itu.int/go/RDF-ASP2020 #RDFASP2020

Prof Kawamori Masahito
Moderator, Moderator, Vice-chair, WP 2, ITU-T SG 16

Aiko Akiyama
Panelist, Expert on Disability, UNESCAP

Mirwais Naikmal
Panelist, Plan and Policy Director, MICT Afghanistan

Notachard Chintakanond
Panelist, Executive Director, International Affairs Bureau, NBT, Thailand

Sameer Pujari
Panelist, Manager BIBM, WHO

ITURDF ASIA-PACIFIC REGION ONLINE 2020

ITU Academy- CoE Training on IoT and AI supporting PWD 2021

Dashboard > Courses > ICT Accessibility > academy_ems_2334

WEEK 1 (18th Oct - 22nd Oct 2021)

WEEK 2 (25th Oct - 29th Oct 2021)

Participant Feedback

Supplementary Training (with Certificate): No Additional Fees, requires registration

ALTC एल्टिसेंटर

ITU

BSNL Connecting India Faster

Technical Assistance

Cybercafe for all

Technical Assistance for the Government of Pakistan to develop Cybercafe for Person with Disabilities (PWD)



Localisation of Training Modules

Self Paced Online Training
ICT Accessibility: The Key to Inclusive Communication
Invest 8 hours to get certified

www.itu.int/en/ITU-D/Digital-Inclusion

ITU Regional Initiative for Europe on Accessibility, Affordability and Skills Development

MODULE 1:
Enabling Communication for All through ICT Accessibility

MODULE 2:
ICT Accessibility Policy Regulations and Standards

MODULE 3:
Achieving ICT Accessibility through Public Procurement



Report: ITU assessment of ICT accessibility in the Asia-Pacific region

The report aims to support the efforts of all stakeholders in Asia-Pacific countries to jointly fulfil global commitments and targets, to establish accessible telecommunications/ICTs for persons with disabilities to accelerate achievement of the SDGs

Examples of ICT accessibility laws, regulations, policies and strategies available in different countries in the Asia-Pacific region

Australia	China	India	Japan	New Zealand	Pakistan	Philippines	Republic of Korea	Sri Lanka	Thailand	Vanuatu	Vietnam
-----------	-------	-------	-------	-------------	----------	-------------	-------------------	-----------	----------	---------	---------

- Anti Discrimination & Protection Acts
- National ICT policies and Strategies
- Voluntary Web Accessibility Standards and guidelines
- Establishment of Institution with mandate to support PWDs

Best Practices in Asia and the Pacific

<ul style="list-style-type: none">• Web Content Accessibility Guidelines (WCAG) across government platforms• Emergency & Disaster Response Services<ul style="list-style-type: none">• SMS in warning areas during disasters• free remote sign language interpreter-based video relay service• Awareness campaigns	<ul style="list-style-type: none">• Accessible banking services- “talking ATMs” with Braille keypads• Procurement of assistive devices• Subsidy for purchased auxiliaries on the service
---	--



Contact Us

ITU Regional Office for Asia
and the Pacific:

ituasiapacificregion@itu.int



Twitter URL:
<https://twitter.com/ITUAsiaPacific>

**Official Twitter
account:**
[@ITUAsiaPacific](https://twitter.com/ITUAsiaPacific)



LinkedIn Account
ITU Regional
Office
for Asia and the
Pacific

For more information, please visit
the ITU website on ICT accessibility

We thank you for your attention

roxana.widmer-iliescu@itu.int

sean.doral@itu.int



We are living in an increasingly interconnected world.